

SCALE: HORIZONTAL 1" = 30'
SCALE: VERTICAL 1" = 3'
C1.1 of 12

HUGHES VILLAGE, ALASKA
ROAD & SUBDIVISION DESIGN
 MOOSE LOOP ROAD EW to N/S
 PLAN & PROFILE



BSC Engineering, LLC
 Effectively Building Sustainable Communities
 11301 Olive Lane
 Anchorage, AK 99515
 P: 907.222.1065 Fax: 222.5210

NO.	REVISION



HUGHES VILLAGE COUNCIL



EBSC Engineering LLC
11301 Olive Lane
Anchorage, AK 99515
Phone: 907-222-1085
Fax: 907-222-5210
www.EBSCengineering.com

January 4, 2013

Finance Committee
Alaska State Capital, Room 519
Juneau, Alaska 99801-1182

Subject: City of Hughes Capital Improvement Project

Dear State Legislatures,

It has been my pleasure to work with the residents of Hughes over the last eight years on transportation and sanitation facility improvement projects. I have participated in many planning meetings and have witnessed the collective interest by the city and tribal officials in making Hughes a safer and more desirable place to live and raise a family.

At present, the community is in urgent need of new housing. The new homes will create a stronger and more viable community by accommodating population growth and by incrementally moving families out of the Koyukuk River floodplain.

Due to the housing shortage, many families share homes or reluctantly move out of town. Also, many of the current homes are within the 100-year floodplain. As summarized below, the absence of readily available housing sites and the presence of homes within the floodplain constitute a housing crisis to the citizens of Hughes.

- About 13 occupied homes are located in the floodplain
- Older homes suffer from:
 - Poor heating and insulation
 - Too small for large families
 - Sub-standard water and sewer facilities
- Families doubling up due to lack of available housing
- Families moving out of town due to lack of available housing
- Families unable to return to Hughes due to lack of available housing

The new Moose Loop Subdivision will accommodate about 13 homes and address the local housing needs for many years to come. It is recommended that power plant upgrades and power distribution lines be constructed along Moose Loop Road as soon as possible.

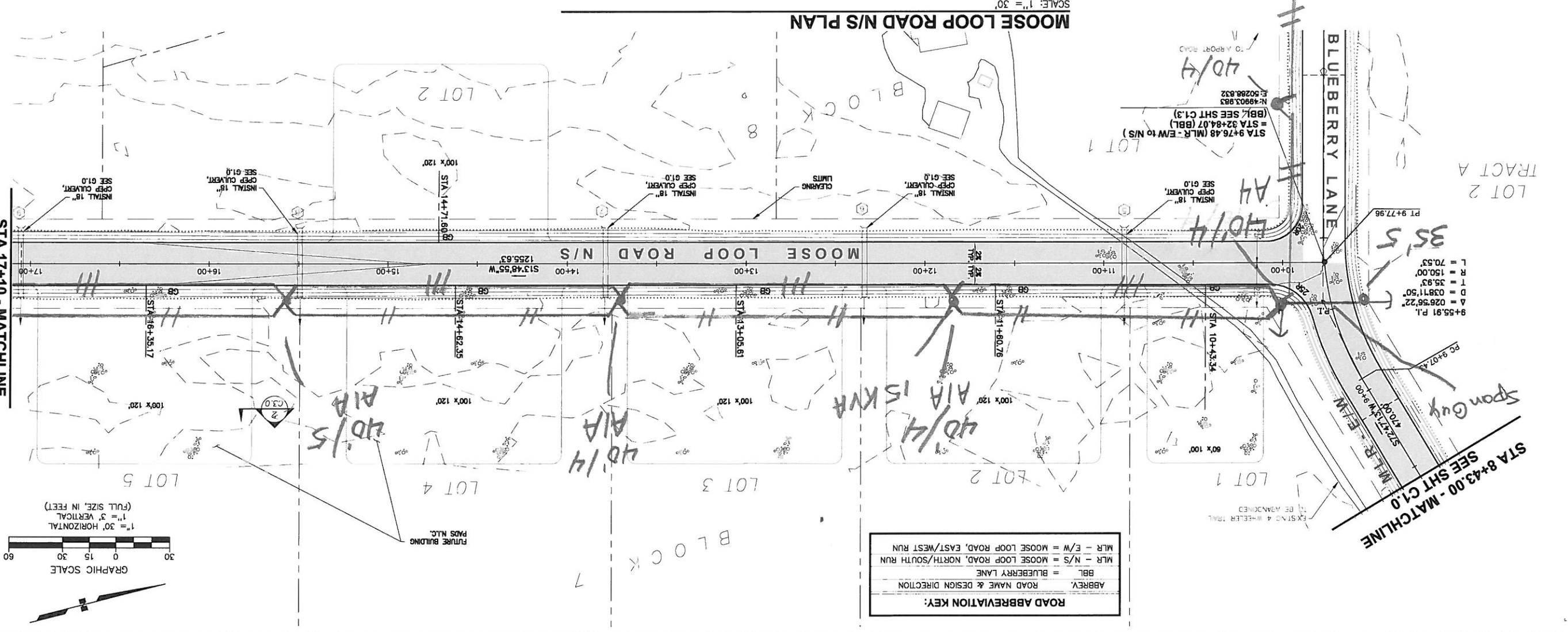
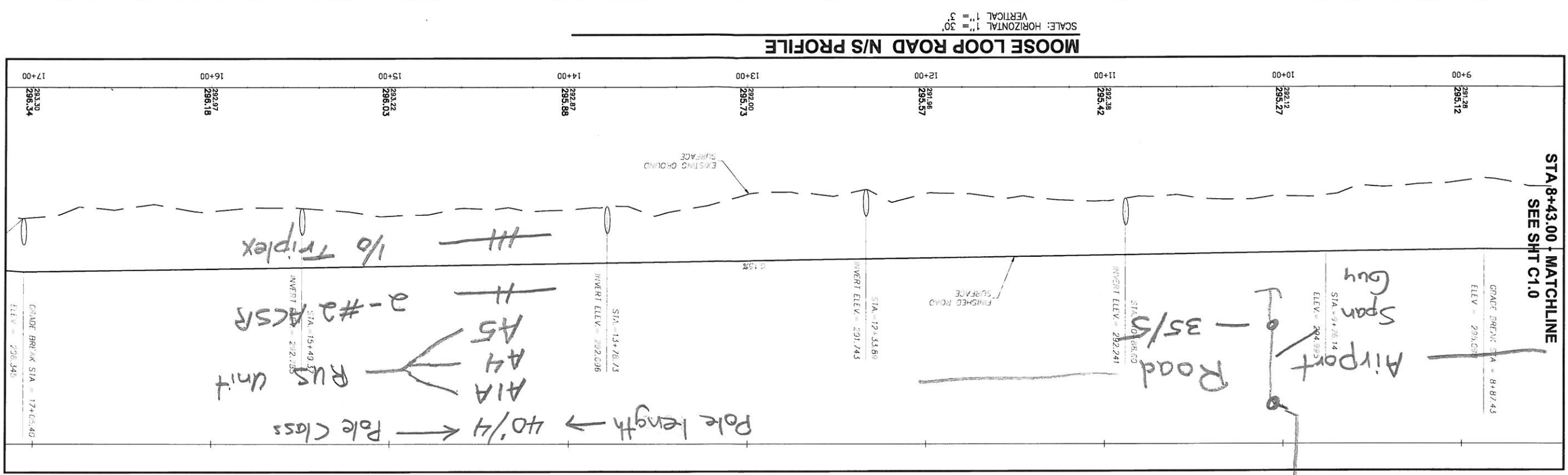
Thank you for your interest in Hughes. Please contact me at 907-222-1085 if you have any questions regarding this letter.

Sincerely,

A handwritten signature in blue ink that reads 'Edward L. Hakala'.

Edward L. Hakala, P.E.
Principal Engineer

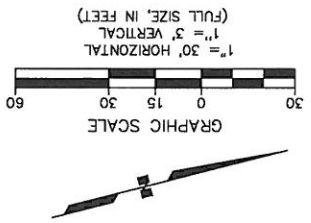
Cc: City of Hughes



C1.1 OF **12**
 SHEET NUMBER
 FILE NO. E10.01
 DATE: 12/16/10
 CHECKED BY: ELH
 DRAWN BY: LDM
 DESIGNED BY: ELH
 SCALE: AS SHOWN

HUGHES VILLAGE, ALASKA
ROAD & SUBDIVISION DESIGN
MOOSE LOOP ROAD EW to N/S
PLAN & PROFILE

EBS Engineering, LLC
 Effectively Building Sustainable Communities
 11301 Olive Lane
 Anchorage, AK 99515
 P: 907.222.1085 | Fax: 222.5210



STA 17+10 - MATCHLINE SEE SHT C1.2

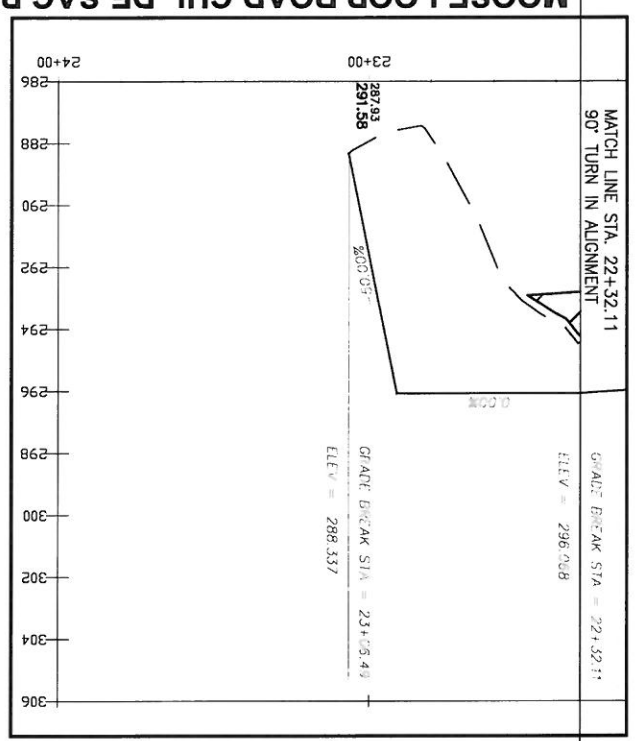
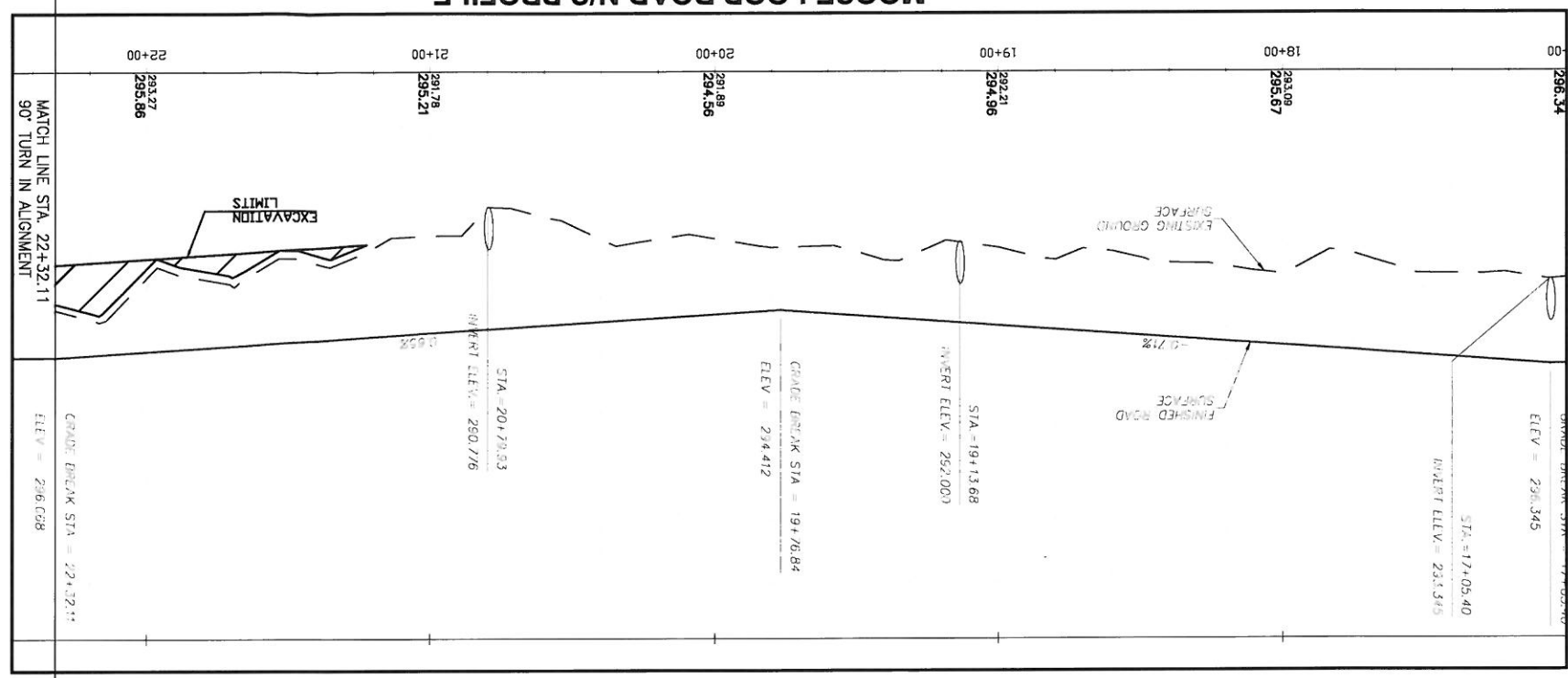
STA 8+43.00 - MATCHLINE
 SEE SHT C1.0

STA 8+43.00 - MATCHLINE
 SEE SHT C1.0

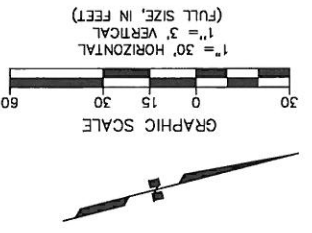
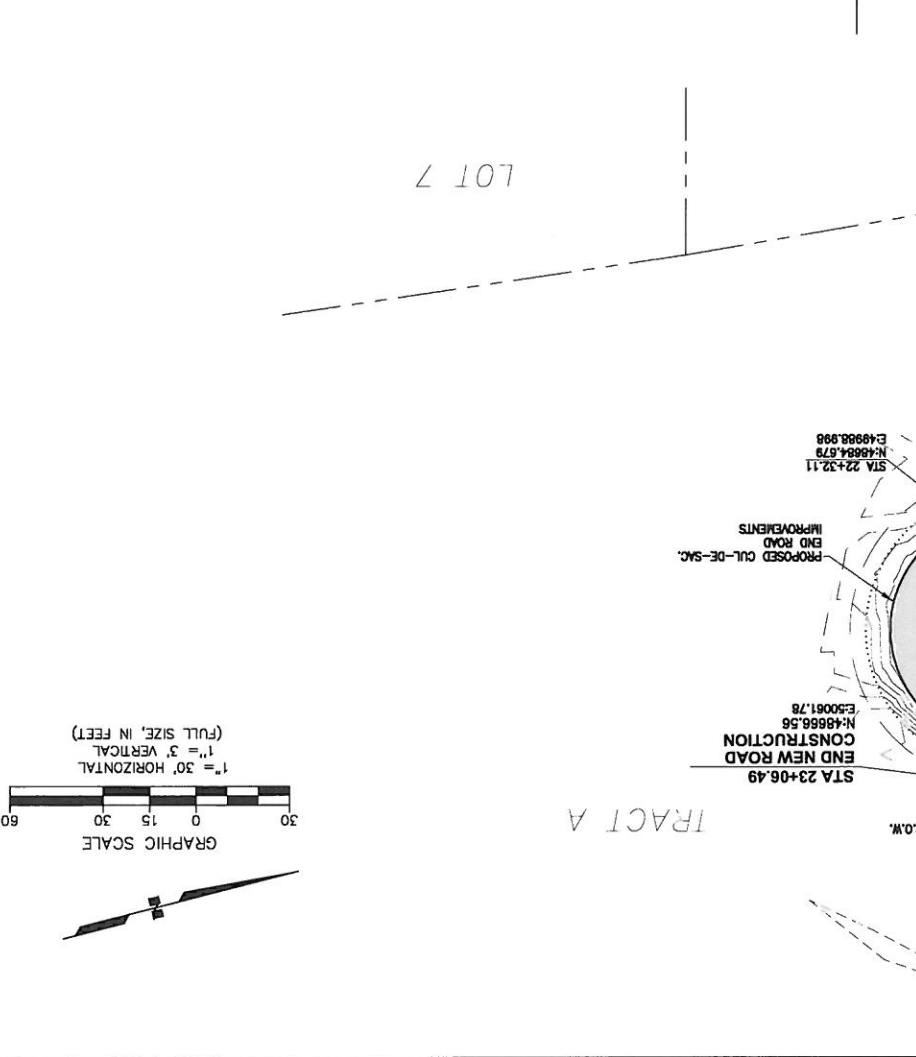
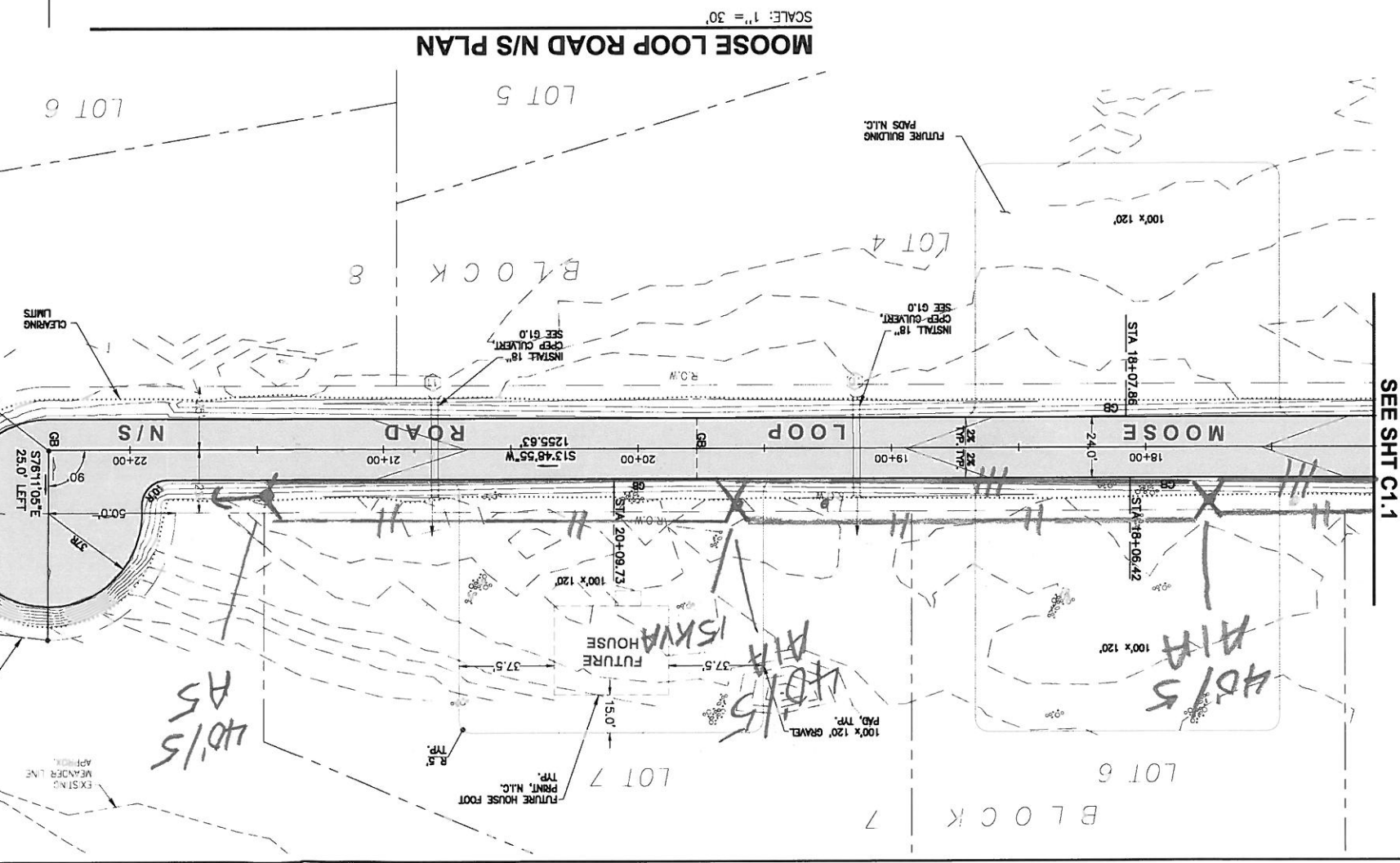
STA 17+10 - MATCHLINE
 SEE SHT C1.2

STA 17+10 - MATCHLINE
SEE SHT C1.1

STA 17+10 - MATCHLINE
SEE SHT C1.1



STA 22+57.11
END MOOSE LOOP ROAD N/S
CONSTRUCTION



C1.2 OF 12
SHEET NUMBER
FILE NO. E10.01
DATE: 12/16/10
CHECKED BY: ELH
DRAWN BY: LDM
DESIGNED BY: ELH
SCALE: AS SHOWN

HUGHES VILLAGE, ALASKA
ROAD & SUBDIVISION DESIGN
MOOSE LOOP ROAD N/S
PLAN & PROFILE

BSC
 Engineering
 Effectively Building Sustainable Communities
 11301 Olive Lane
 Anchorage, AK 99515
 P: 907.222.1085 | Fax: 222.5210

REVISION	



Hughes Village Council
Hudotl'eekkaakk'e Tribe
P.O. Box 45029
Hughes, AK 99745

RE: City of Hughes Capital Improvement Project

January 25, 2013

Alaska State Legislature
Juneau, AK

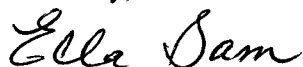
Dear Legislatures:

I'm writing this letter in support of the City of Hughes 2013 Capital Improvement Project Proposal, for electrical utility distribution lines at our new subdivision in Hughes. The Hughes Tribe and the City of Hughes work very closely together on all community projects. As a community we have developed a community plan that we are following in applying for funds for projects.

The electrical utility distribution project goes hand in hand with our new access road to our new subdivision and healthy homes for our families. The road project was completed in October 2012, and our gravel pads for new homes are scheduled to be completed by July 2013. We are in the process of applying for funds to build two new homes in the summer of 2013.

The plans for these projects stem from the fact that our community is growing and we need to provide basic necessities, such as electricity, for our residents. All three major projects mentioned in this letter have been discussed in various community meetings over the past six years. All Tribal Members are in support of the plan that we are following as a community. If you should have any questions, please contact Janet Bifelt, Tribal Administrator, at the phone number below. I want to thank you in advance for your support. Thank you.

Sincerely,



Ella Sam, Second Chief

ES/jb

Phone (907) 889-2239

Fax (907) 889-2252