

Agency: Commerce, Community and Economic Development**Grants to Municipalities (AS 37.05.315)****Grant Recipient: Port Lions****Federal Tax ID: 92-0035153****Project Title:****Project Type: New Construction and Land Acquisition**

Port Lions - City Dock and Ferry Terminal Replacement

State Funding Requested: \$3,500,000**House District: 35 / R**

One-Time Need

Brief Project Description:

Construction of a new City Dock to be used for a Ferry Landing, fuel barge, Commercial Fishing Vessels, and freight

Funding Plan:

Total Project Cost:	\$15,500,000
Funding Already Secured:	(\$12,000,000)
FY2014 State Funding Request:	<u>(\$3,500,000)</u>
Project Deficit:	\$0

*Funding Details:**Fy 11 Legislative Grant \$1,000,000.00**Fy 12 Legislative Grant \$8,000,000.00**FY 13 Legislative Grant \$3,000,000.00**Native Village of Port Lions \$145,643.48***Detailed Project Description and Justification:**

This project is currently at 95% design, with completion to 100% design estimated in mid February of 2013. Permits have been applied for and we are waiting on responses from various agencies.

This project is a partnership between The City of Port Lions, The Native Village of Port Lions, Koniag, Inc., and Afognak Native Corporation. The State of Alaska has funded 100% of this project to date with the exception of a contribution from the Native Village of Port Lions.

The project is being designed by PND Engineers, Inc., with input from the community, the Alaska Marine Highway, and Kodiak Electric Association. The City and Native Village have invested the last 3 years in overseeing this project and we feel that our design will be one that will last well into the future. The design has changed slightly since we last submitted a funding request, so we have included as an attachment the 95% design submittal. The Basic points are still there, with a rubblemound causeway approach, ending in a sheet pile 210 foot dock face which is a requirement of the Alaska Marine Highway Vessel, M/V Tustumena. We have scaled back to the minimum lighting requirements, and are seeking ways to minimize the costs and still have a complete sustainable dock replacement project. Our priorities when we first started this project remain the same. Those priorities are a dock suitable for the M/V Tustumena to continue service to the community, utilities to include power, lighting, water, fuel service, and the removal of the existing dock structure. Mooring and breasting dolphins are also in the design, and those have been added to accommodate potential future ferry service from the M/V Kennicott.

The City based preliminary costs on a 2009 Corps of Engineers Technical Report in which a preferred design option was

chosen. When funds were requested from the Legislature in 2010, we based our amount on that report. The next year we were in the preliminary design stages and requested more funding in Fy 2011 based on the design at that time.

Throughout these years and up to the present, we have been waiting to apply for Federal Transportation funding through BIA High Priority Transportation Funds and/or Ferry Boat Discretionary Funds, but the lack of Federal Appropriation of DOT programs caused us to come back

to the Legislature for more funding in Fy 2012. Now, we are just about at the 100% design phase, and although this has taken 3 years, we have a quality design which will serve our community well. We are unsure as to when or if we will be able to apply for Federal DOT funding as again at this writing, those programs are now under MAP21 and the application window is still not open. Four years after requesting funds from the legislature, we are finally moving towards construction of this project. Construction costs have continued to rise, and the price of transporting and placing the rock for our project is subject to those rising costs, fuel costs being the largest increase.

It is our firm belief that the City can build this project for the remaining amount of funds requested here, which is \$3.5 Million, for a total project cost of \$15.5 Million.

We have spent the last 2 years investing our time and the State's money in a quality design for our community and we are now asking you to help us to see this project through to completion.

Project Timeline:

100% design- Mid February 2013

Permits in Place- April 2013

Construction Start- June/July 2013- or early Spring of 2014

Entity Responsible for the Ongoing Operation and Maintenance of this Project:

The City of Port Lions

Grant Recipient Contact Information:

Name: Steve Andresen
 Title: Mayor
 Address: 207 Spruce Drive
 Port Lions, Alaska 99550
 Phone Number: (907)454-2332
 Email: cityofportlions@hotmail.com

Has this project been through a public review process at the local level and is it a community priority? Yes No

**CITY OF PORT LIONS
RESOLUTION # 12-12-R**

**A RESOLUTION OF THE CITY OF PORT LIONS ESTABLISHING THE
CAPITAL IMPROVEMENT PROJECT LIST FOR THE FISCAL YEAR 2013**

WHEREAS, a Capital Improvement Project List has been prepared by the City of Port Lions for the fiscal year 2013, and

WHEREAS, at the Regular City Council meeting held November 13, 2012, the Port Lions City Council adopted a Capital Improvement Project List for FY 2013; and

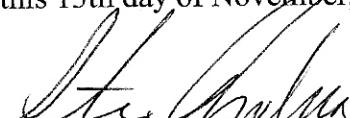
NOW THEREFORE BE IT RESOLVED that the document entitled "City of Port Lions Capital Improvement Project List" for the year 2013 is adopted as follows:

	ORIGINAL
1. Public Ferry Dock Facility	\$ 3,500,000.00
2. Small Boat Harbor Stub Breakwater and Inner Harbor Replacement Project, Phase II	\$ 6,000,000.00
3. Water Reservoir Repair	\$ 500,000.00
4. City Maintenance Building Replacement	\$ 200,000.00
5. Heavy Equipment	\$ 250,000.00
6. Native Village of Port Lions Building	\$ 7,000,000.00
7. New Subdivision Development	\$ 800,000.00
8. Harbor Water Main	\$ 1,000,000.00
9. Rock Screen and Conveyor	\$ 100,000.00
10. Municipal Building Repair	\$ 75,000.00
11. Roads Upgrade	\$ 1,200,000.00


AND BE IT FURTHER RESOLVED, that the Mayor is hereby instructed to advise the Governor, Legislature, Borough and appropriate State Agencies of the Capital Improvement Project List Adopted by the Port Lions City Council.

This Resolution becomes effective upon its adoption by a duly constituted quorum of the Port Lions City Council.

Passed and unanimously approved by a duly constituted quorum of the Port Lions City Council this 13th day of November, 2012.



Mayor, City of Port Lions

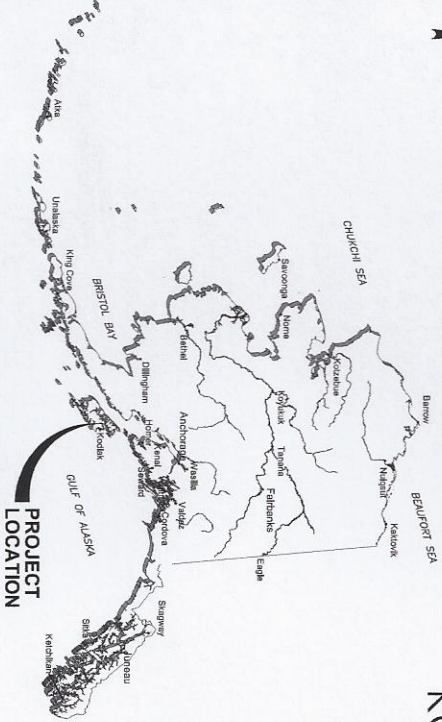


ATTEST: City Clerk

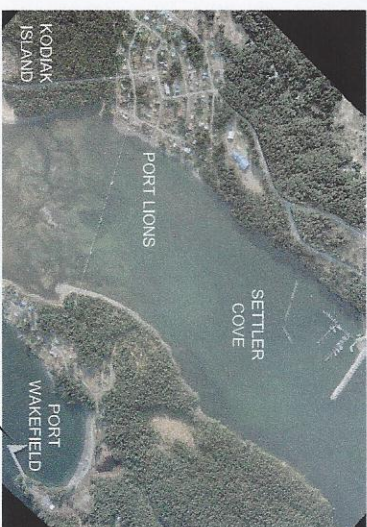
PORT LIONS FERRY TERMINAL

JANUARY 2013

KODIAK ISLAND, ALASKA



STATE OF ALASKA



PROJECT LOCATION

PORT LIONS VICINITY

DESCRIPTION OF WORK

1. PHASE I - CLEARING AND GRUBBING, SELECTIVE DEMOLITION OF MECHANICAL AND ELECTRICAL, CONSTRUCTION OF CAUSEWAY, SHEET PILE BULKHEAD DOCK, FUEL & WATER SYSTEM, AND SITE ELECTRICAL.
2. PHASE II ALTERNATE 1 - COMPLETE DEMOLITION OF THE EXISTING TIMBER STRUCTURE AND APPURTENANCES INCLUDING TIMBER PILES AND STRUCTURES ON DECK.
3. PHASE II ALTERNATE 2 - CONSTRUCTION OF CATWALKS, DOLPHINS AND FREE STANDING PILES.

NOTE:
ALTERNATE 1 HAS TO BE COMPLETED PRIOR TO ALTERNATE 2 CONSTRUCTION.

SHEET INDEX				
COVER SHEET AND INDEX SHEET	G1.00			
SOIL PROBE DATA	G1.10			
SITE PLAN AND PROJECT CONTROL	G2.00			
ENLARGED SITE PLAN [PHASE I]	G2.10			
EXISTING CONDITIONS AND DEMOLITION [PHASE II ALT 1]	G2.20			
CIVIL SITE PLAN	G1.00			
CIVIL NOTES	G1.10			
ROAD PROFILE	G2.00			
TYPICAL SECTIONS	G2.10			
UTILITY PLAN	C3.00			
WATER SERVICE	C3.10			
CIVIL DETAILS	C3.20			
WATER SERVICE DETAILS	C3.30			
JERSEY BARRIERS	C3.40			
STRUCTURAL NOTES	S1.00			
CIVIL NOTES	S1.01			
SHEET PILE DRIVE PLAN	S2.00			
SHEET PILE SCHEDULE AND DETAILS	S2.10			
SHEET PILE DRIVE PLAN FOR TAILWALLS	S2.20			
SHEET PILE DRIVE PLAN FOR TAILWALLS	S2.21			
PRELOADING PLAN	S2.30			
DOCK CAP	S3.00			
BULLRAMP AND CAP	S3.10			
MISCELLANEOUS DOCK DETAILS	S3.11			
FENDER AND LADDER	S3.20			
ANCHORS	S3.30			
CONCRETE PILES	S3.40			
DOLPHIN PLAN [PHASE II ALT 2]	S4.00			
CATWALKS [PHASE II ALT 2]	S4.10			
MODERN DOLPHIN [PHASE II ALT 2]	S4.30			
BUILDING DETAILS	S5.00			
PIPELINE ABBREVIATIONS, SYMBOLS AND KEYS	M3.10			
PIPELINE NOTES AND SPECIFICATIONS	M3.11			
PIPELINE DEMO PLAN	M01.10			
PIPELINE DEMO DETAILS	M01.11			
PROCESS FLOW DIAGRAM	M1.00			
PIPELINE PLAN	M2.00			
SOUTH PILING PLAN	M2.20			
PIPING DETAILS	M2.40			
PIPING DETAILS	M2.50			
CATHODIC PROTECTION PLAN	M3.00			
CATHODIC PROTECTION PLAN SECTIONS AND DETAILS	M3.10			
PLAN VIEW - LIGHTING	E1.00			
ELECTRIC BLOCK DIAGRAM - FUEL SYSTEMS	E2.00			
LEGEND AND WALL DETAIL	E3.00			
FUEL SYSTEM ENCLOSURE, LIGHT POLE, AND	E5.00			
LIGHT POLE DETAILS	E6.00			
LIGHT SCHEDULES	E7.00			
LIGHTING SCHEDULES	E8.00			
PANEL I SCHEDULE AND CLASSIFICATIONS	E9.00			

95% SUBMITTAL - 1/11/2013

PORT LIONS DOCK

COVER SHEET AND INDEX SHEET

G1.00

OPEN CELL® AND OPEN CELL SHEET PILE® ARE REGISTERED TRADEMARKS OF PND ENGINEERS, INC.
THE OPEN CELL SYSTEM IS PATENTED
PATENT - US 7,018,841 B2
PATENT - US 7,498,140 B2

This drawing, including the principle of design, is the intellectual property of PND Engineers, Inc. and is submitted with the agreement that it is not to be reproduced, copied, or used in any manner that would be detrimental to PND. Use of this drawing and the associated design process is restricted to the project and the design and construction of the project.

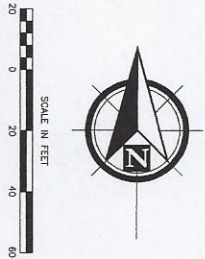
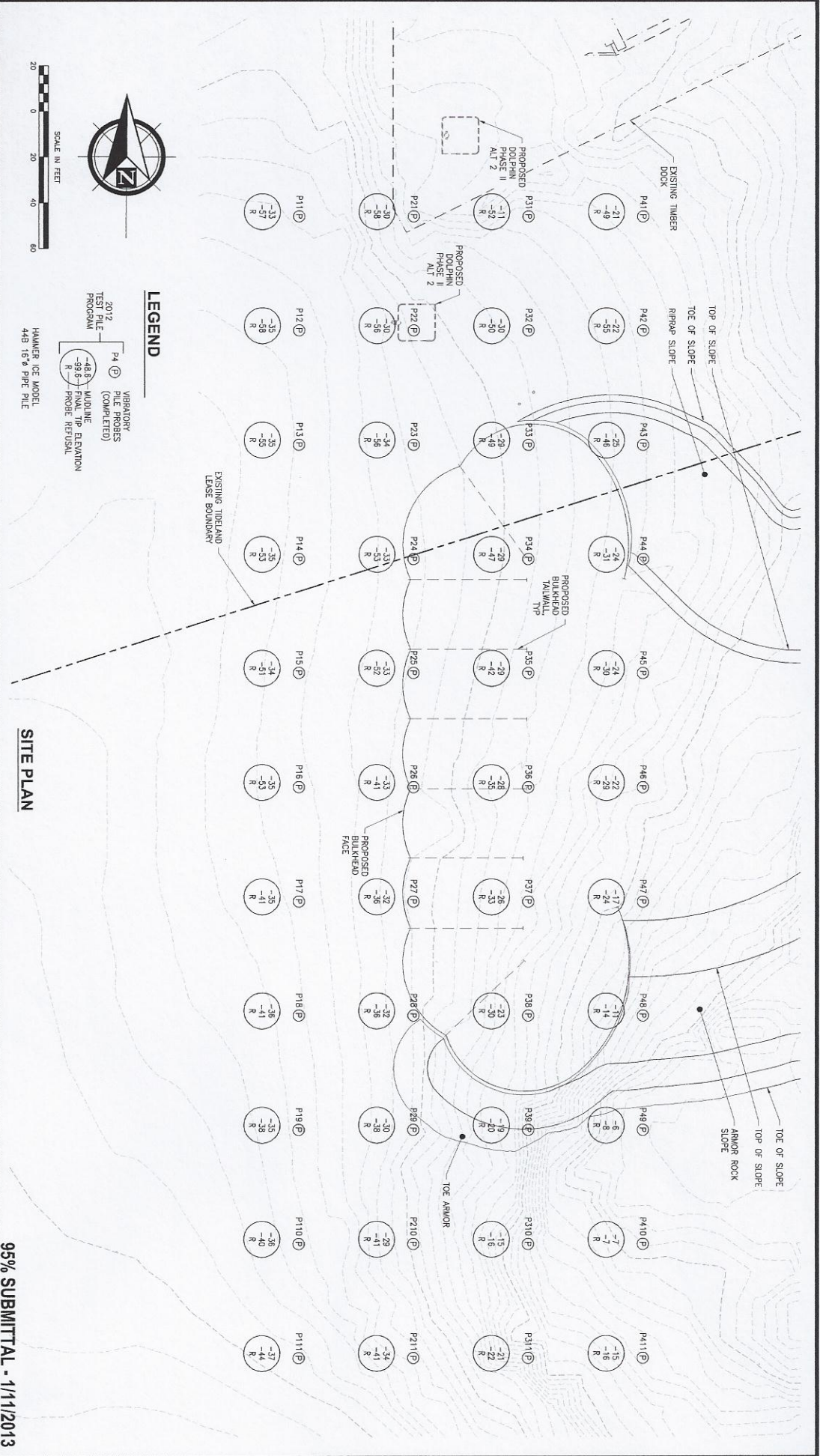
PND Engineers, Inc. (PND) is not responsible for and does not warrant the accuracy, completeness, or timeliness of the information provided herein. The information is provided for informational purposes only and is not intended to be used in any manner that would be detrimental to PND. Use of this drawing and the associated design process is restricted to the project and the design and construction of the project.

REV	DATE	DESCRIPTION

1506 West 36th Avenue
Anchorage, Alaska 99503
Phone: 907.561.1011
Fax: 907.561.4220
www.pndengineers.com

PND
ENGINEERS, INC.

DESIGNED BY:	DATE:	JANUARY 2013
CHECKED BY:	PROJECT NO.:	11123



LEGEND

P4 (P) VIBRATORY PILE PROBES (COMPLETED)
 P4 (R) MIDLINE PROBE REFUSAL
 P4 (R) FINAL TIP ELEVATION
 P4 (R) PROBE REFUSAL

OPEN CELL® AND OPEN CELL SHEET PILE®
ARE REGISTERED TRADEMARKS OF PND ENGINEERS, INC.
THE OPEN CELL SYSTEM IS PATENTED
PATENT - US 6,712,944 B2
PATENT - US 7,488,140 B2

This document, including the procedure of design, is the intellectual property of PND Engineers, Inc. and is confidential. It is not to be reproduced, copied, or used in any form without the express written permission of PND Engineers, Inc. Use of this drawing and the associated design procedures is confined to the project and location.

REV	DATE	DESCRIPTION

1366 West 36th Avenue
 Anchorage, Alaska 99503
 Phone: 907.561.1011
 Fax: 907.563.4230
 www.pndengineers.com

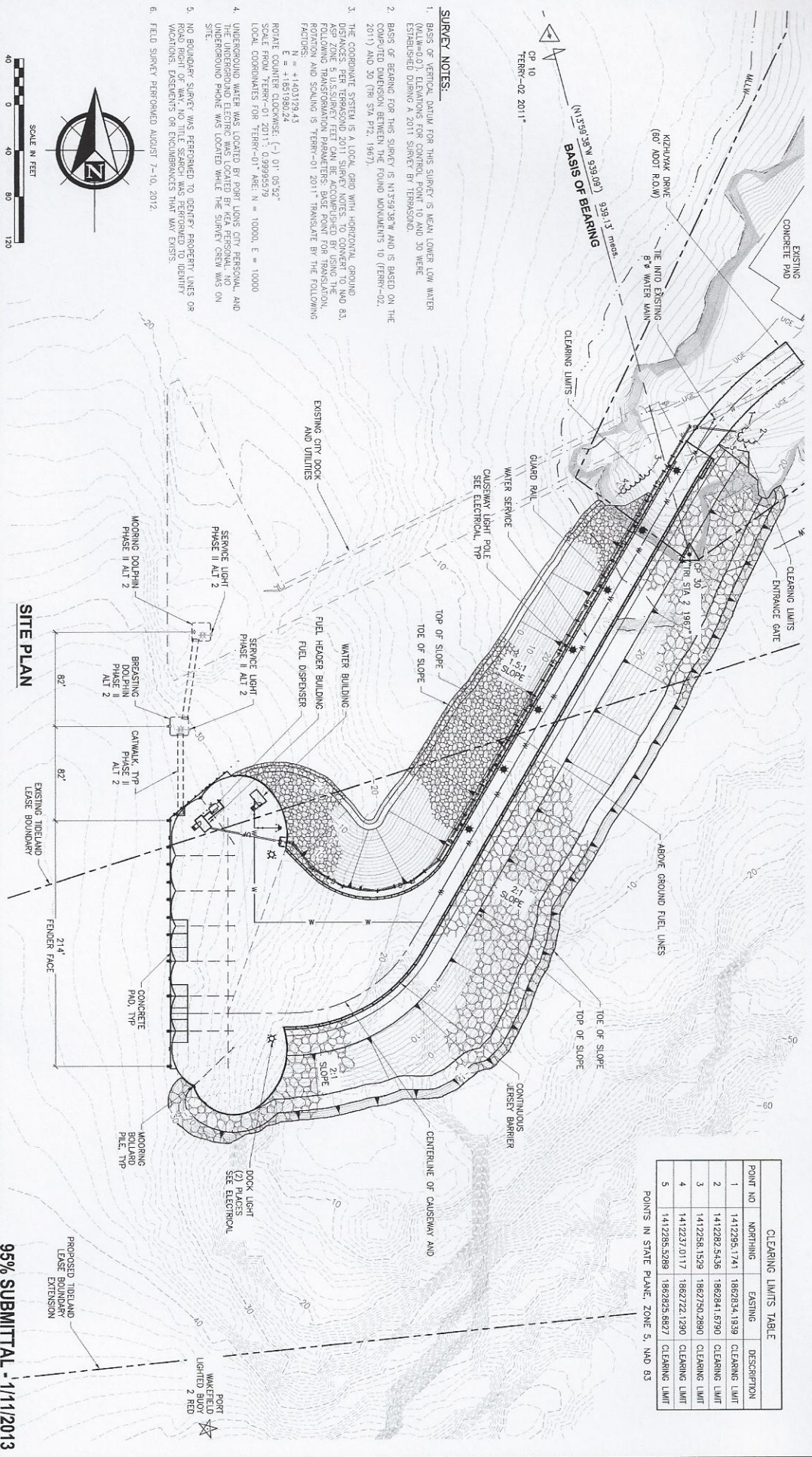
PND ENGINEERS, INC.
SOIL PROBE DATA
95% SUBMITTAL - 1/11/2013
PORT LIONS DOCK
 DESIGNED BY: [] DATE: JANUARY 2013
 CHECKED BY: [] DATE: [] PROJECT NO. 111120
G1.10

POINT NO	NORTHING	EASTING	DESCRIPTION
1	1412295.1741	1862834.1939	CLEARING LIMIT
2	1412282.5436	1862841.6790	CLEARING LIMIT
3	1412258.1929	1862750.2880	CLEARING LIMIT
4	1412237.0117	1862722.1290	CLEARING LIMIT
5	1412285.5289	1862825.6827	CLEARING LIMIT

POINTS IN STATE PLANE, ZONE 5, NAD 83

SURVEY NOTES:

1. BASIS OF VERTICAL DATUM FOR THIS SURVEY IS MEAN LOWER LOW WATER (MULLUND) ELEVATIONS FOR CONTROL POINT 10 AND 30 WERE ESTABLISHED DURING A 2011 SURVEY BY TERRASOIL.
2. BASIS OF BEARING FOR THIS SURVEY IS N1739.38°W AND IS BASED ON THE COMPUTED DIMENSION BETWEEN THE FOUND MONUMENTS TO (TERR-02, 2011) AND 30 (M STA 742, 1987).
3. THE COORDINATE SYSTEM IS A LOCAL GRID WITH HORIZONTAL GROUND DISTANCES PER TERRASOIL 2011 SURVEY NOTES TO CONVENT TO NAD 83. THE ELEVATION SYSTEM IS A MEAN LOWER LOW WATER DATUM. THE FOLLOWING TRANSFORMATION PARAMETERS BASE POINT FOR TRANSLATION, ROTATION AND SCALING IS "TERR-01 2011" TRANSLATE BY THE FOLLOWING FACTORS:
 $N = +1403199.43$
 $E = +6021292.24$
 $R = -1.40319943$
 $S = +602129224$
 ROTATE COUNTER CLOCKWISE (-) 01.0559°
 SCALE FROM "TERR-01 2011": 0.99995579
 LOCAL COORDINATES FOR "TERR-01" ARE: N = 10000, E = 10000
4. UNDERGROUND WATER WAS LOCATED BY PORT LIONS CITY RESERVOIR AND THE UNDERGROUND ELECTRIC WAS LOCATED BY KEA PERSONAL AND UNDERGROUND PHONE WAS LOCATED WHILE THE SURVEY CREW WAS ON SITE.
5. NO BOUNDARY SURVEY WAS PERFORMED TO DETERMINE PROPERTY LINES OR VACATIONS, EASEMENTS OR ENCUMBRANCES THAT MAY EXIST.
6. FIELD SURVEY PERFORMED AUGUST 7-10, 2012.



OPEN CELL® AND OPEN CELL SHEET PILES®
 ARE REGISTERED TRADEMARKS OF PND ENGINEERS, INC.
 THE PATENT - US 6,718,944 B2
 PATENT - US 7,018,141 B2
 PATENT - US 7,483,140 B2

POINT #	NORTHING	EASTING	ELEVATION	DESCRIPTION
10	9393.1725	10398.0927	17.24	FOUND BC MONUMENT
30	9039.915	10783.196	17.81	FOUND BC MONUMENT

PND Engineers, Inc. (PND) is not responsible for utility programs, notices or procedures of operations, or the accuracy of utility data. Where stipulations are provided or not stated and the information is not correct, it is the responsibility of the user. PND does not warrant, represent or defend for any utility, which is not a direct client of PND. PND shall not be held liable for any damages or liability to PND.

REV	DATE	DESCRIPTION

1566 West 56th Avenue
 Anchorage, Alaska 99503
 Phone: 907.561.1011
 Fax: 907.563.4220
 www.pndengineers.com



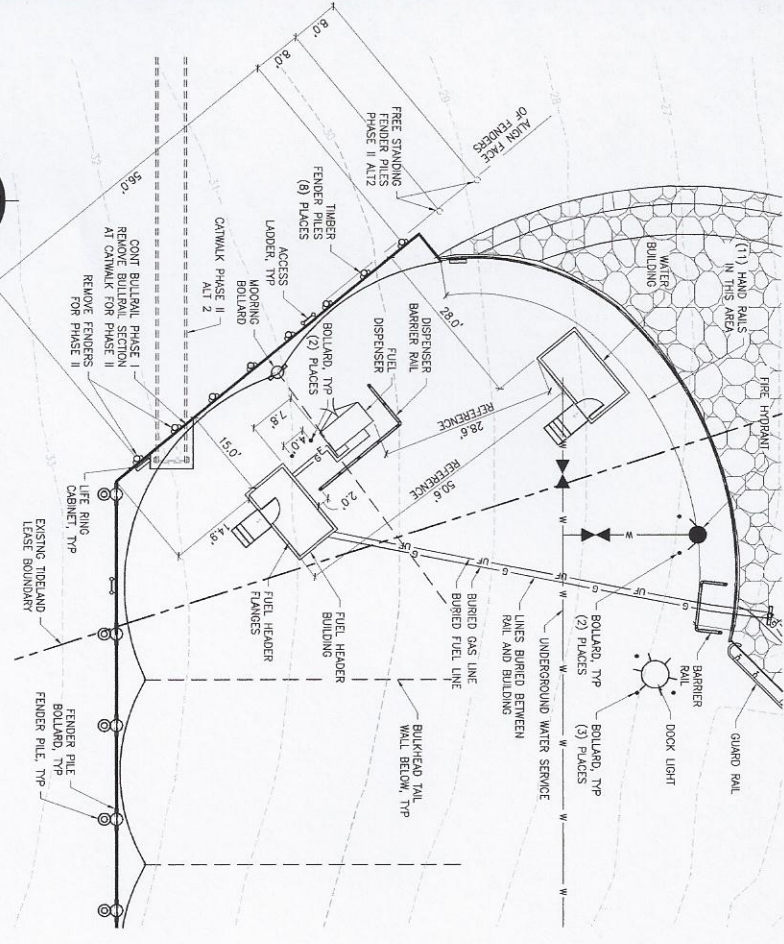
95% SUBMITTAL - 1/11/2013

PORT LIONS DOCK

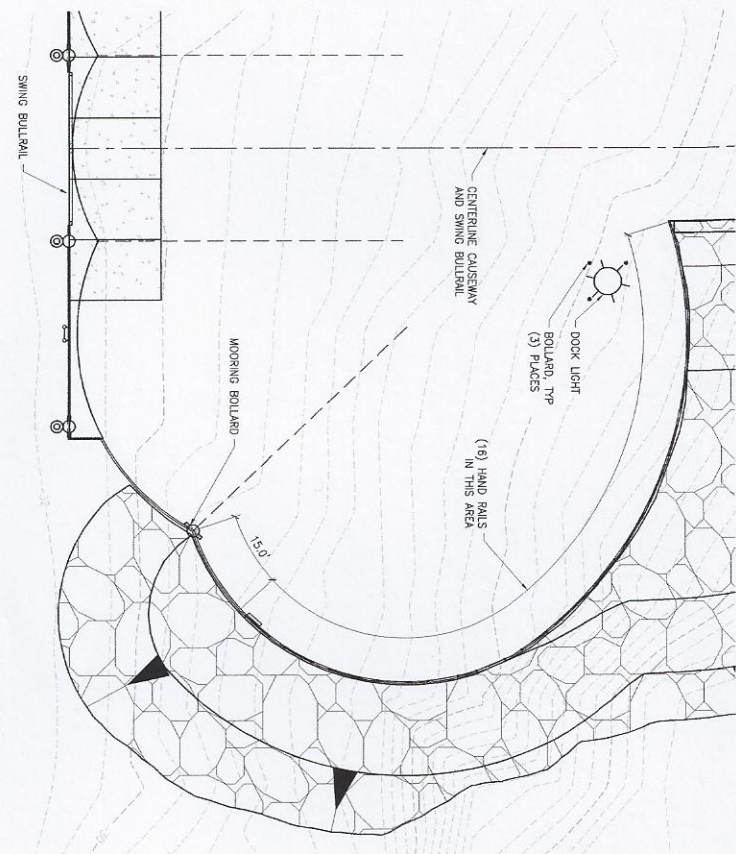
SITE PLAN AND PROJECT CONTROL (PHASE I)

ISSUED BY: [Signature] DATE: JANUARY 2013
 CHECKED BY: [Signature] DATE: 1/11/2013

G2.00



PLAN



95% SUBMITTAL - 1/11/2013

OPEN CELL AND OPEN CELL SHEET PILE
 ARE REGISTERED TRADEMARKS OF PND ENGINEERS, INC.
 THE OPEN CELL SHEET PILE DESIGN IS PATENTED
 PATENT - US 7,018,141 B2
 PATENT - US 7,498,140 B2
 PATENT - US 7,498,140 B2

This drawing, including the portion of design, is the intellectual property of PND Engineers, Inc. and is submitted with the agreement that it is not to be used, copied, or otherwise reproduced in any form without the written consent of PND Engineers, Inc. Use of this drawing and the associated design information is restricted to the project and location shown.

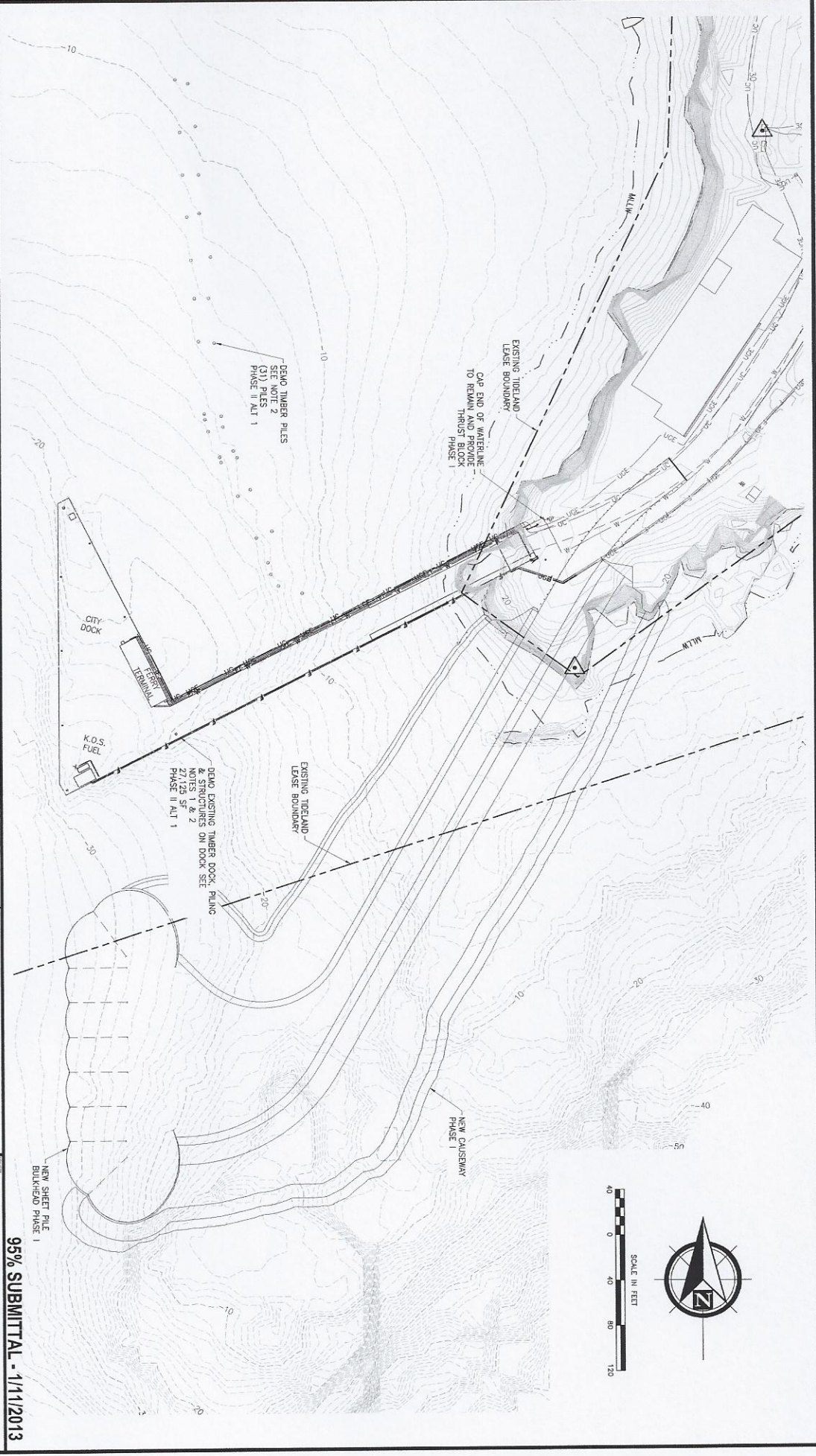
PND Engineers, Inc. (PND) is not responsible for any errors, omissions, or inaccuracies in this drawing or for any consequences arising therefrom. The user of this drawing is advised to verify all dimensions and specifications are correct and to consult with the appropriate authorities for any necessary permits or approvals. PND Engineers, Inc. is not responsible for any delays or costs incurred by the user of this drawing.

REV	DATE	DESCRIPTION

1506 West 36th Avenue
 Anchorage, Alaska 99503
 Phone: 907.561.1011
 Fax: 907.561.4220
www.pndengineers.com



DESIGNED BY:	DATE:	PROJECT NO.:
ENLARGED SITE PLAN	JANUARY 2013	111120
[PHASE I]		
G2.10		



OPEN CELL® AND OPEN CELL SHEET PILE®
 ARE REGISTERED TRADEMARKS OF PIND ENGINEERS, INC.
 THE OPEN CELL SYSTEM IS PATENTED
 PATENT - US 6,713,944 B2
 PATENT - US 7,465,140 B2
 PATENT - US 7,465,140 B2

- SHEET NOTES:**
1. SEE MECHANICAL AND ELECTRICAL FOR DEMOLITION OF EXISTING UTILITIES.
 2. TIMBER PILES ARE TO BE REMOVED IN THEIR ENTIRETY OR CUT OFF WITHIN 8-INCHES OF MODULE.
 3. DEMOLITION DEBRIS SHALL BE DISPOSED OF PROPERLY IN ACCORDANCE WITH ALL FEDERAL, STATE, AND LOCAL REQUIREMENTS.
 4. UTILTY PROVIDERS IN REGARD TO SALVAGE.

PIND Engineers, Inc. (PIND) is not responsible for any program, method or procedure of operation, or the use of any equipment, machinery or tool used in the construction of the project. PIND is not responsible for any modification or alteration of the specifications and conditions of the project. PIND is not responsible for any delay or interruption of the project. PIND is not responsible for any damage to property or persons. PIND is not responsible for any cost overruns or budget overruns. PIND is not responsible for any change orders or variations. PIND is not responsible for any claims or lawsuits. PIND is not responsible for any environmental impact or regulatory compliance. PIND is not responsible for any safety or health issues. PIND is not responsible for any insurance or bonding requirements. PIND is not responsible for any permits or licenses. PIND is not responsible for any taxes or fees. PIND is not responsible for any other legal or regulatory requirements.

REV	DATE	DESCRIPTION

1366 West 36th Avenue
 Anchorage, Alaska 99503
 Phone: 907.564.1011
 Fax: 907.563.4220
www.pindengineers.com

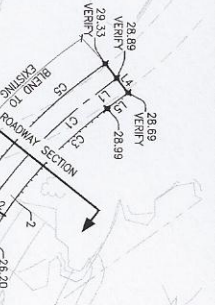


DESIGNED BY:	SEL. DATE:	JANUARY 2013
CHECKED BY:	REV. PROJECT NO.:	11120
G2.20		

95% SUBMITTAL - 1/11/2013

PORT LIONS DOCK

EXISTING CONDITIONS AND DEMOLITION (PHASE II ALT 1)



POINT TABLE			
POINT NO	NORTHING	EASTING	DESCRIPTION
1	1412233.51	1862751.57	START RIPRAP
2	1412279.64	1862806.23	START ARMOR
3	1412263.60	1862770.53	START GUARDRAIL
4	1411925.99	1862434.71	END GUARDRAIL

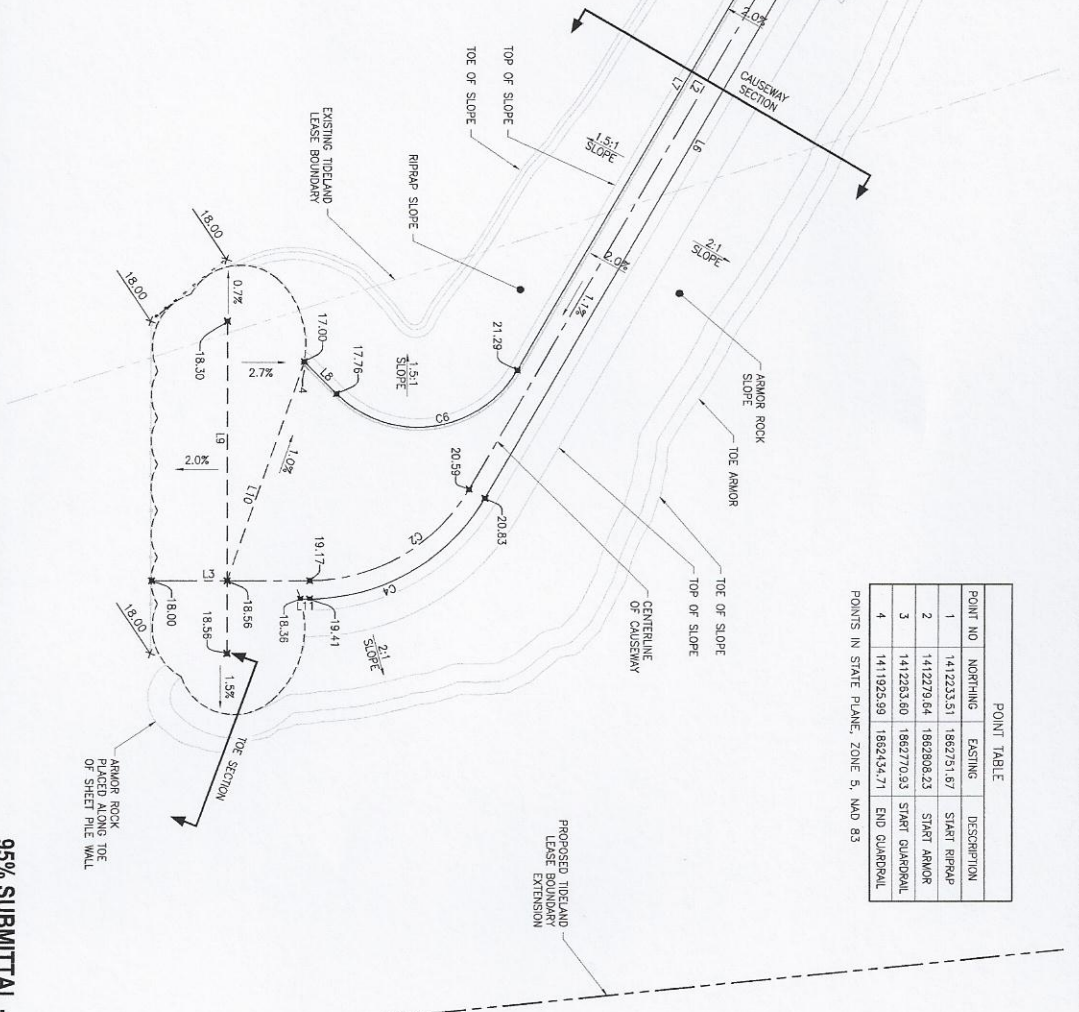
POINTS IN STATE PLANE, ZONE 5, NAD 83

LINE TABLE							
LINE	LENGTH	DIRECTION	START NORTHING	START EASTING	END NORTHING	END EASTING	DESCRIPTION
L1	16.80'	S52°12'59"W	1412359.49	1862874.20	1412349.2	1862860.92	CENTERLINE
L2	476.05'	N29°56'48"E	1411846.43	1862541.94	1412371.9	1862779.59	CENTERLINE
L3	104.05'	N89°55'49"E	1411785.20	1862334.06	1411785.3	1862438.11	CENTERLINE
L4	24.00'	S37°48'41"E	1412368.98	1862868.65	1412350.0	1862861.55	MATCH TO EXIST
L5	16.94'	S12°12'58"W	1412350.01	1862881.55	1412339.6	1862868.17	EDGE OF ROAD
L6	476.05'	N29°56'48"E	1411838.44	1862552.34	1412251.9	1862789.98	EDGE OF ROAD
L7	392.76'	S29°56'48"W	1412263.92	1862769.19	1411923.6	1862531.3	EDGE OF ROAD
L8	29.67'	S45°04'11"E	1411928.89	1862434.17	1411907.9	1862465.17	EDGE OF ROAD/G.PAIL
L9	217.99'	N0°04'11"W	1411737.52	1862384.12	1411955.1	1862353.86	GRADE BREAK
L10	152.11'	N19°13'53"E	1411788.27	1862384.05	1411928.9	1862434.17	GRADE BREAK
L11	6.16'	S89°55'49"W	1411773.33	1862438.13	1411773.33	1862431.97	EDGE OF ROAD
L12	26.00'	S56°08'18"E	1412283.35	1862760.23	1412269.9	1862801.82	GATE

POINTS IN STATE PLANE, ZONE 5, NAD 83

CURVE TABLE							
CURVE	RADIUS	DELTA	CHORD BEARING	CHORD LENGTH	TANGENT LENGTH	CENTERLINE DESCRIPTION	
C1	300.00'	23°30'47"	S41°42'11"W	122.29'	123.1'	62.44'	CENTERLINE
C2	120.63'	58°38'12"	N89°56'18"E	119.97'	126.6'	69.14'	EDGE OF ROAD
C3	288.00'	23°32'19"	S41°42'58"W	117.49'	118.3'	60.01'	EDGE OF ROAD
C4	133.57'	58°41'53"	N89°56'18"E	131.97'	138.1'	76.08'	EDGE OF ROAD
C5	326.04'	25°24'55"	S42°54'28"W	143.44'	144.6'	73.82'	EDGE OF ROAD / GUARDRAIL
C6	75.00'	104°59'01"	N82°28'18"E	118.99'	137.4'	97.71'	

POINTS IN STATE PLANE, ZONE 5, NAD 83



- SHEET NOTES:**
1. SECTIONS SEE SHEET C2.10.
 2. CENTERLINE OF CAUSEWAY SECTION SEE SHEET C2.00.

OPEN CELL™ AND OPEN CELL SHEET PILE™ ARE REGISTERED TRADEMARKS OF PND ENGINEERS, INC. THE OPEN CELL SYSTEM IS PATENTED.

PATENT - US 6,715,964 B2
 PATENT - US 7,028,141 B2
 PATENT - US 7,685,100 B2

This document, including all drawings and specifications, is the property of PND Engineers, Inc. and is loaned to you for the project only. It is not to be reproduced, copied, or used in any other manner than its intended use without the written consent of PND Engineers, Inc. Use of this drawing and the associated design information is restricted to the project and site specified. Any other use without the written consent of PND Engineers, Inc. is prohibited.

PND Engineers, Inc. (PND) is not responsible for safety or construction of the design shown on these drawings. These drawings are for information only and do not constitute a contract. The drawings are for use on the project only and are not to be used for any other project. PND Engineers, Inc. is not responsible for any errors or omissions on these drawings. PND Engineers, Inc. is not responsible for any errors or omissions on these drawings.

1506 West 54th Avenue
 Anchorage, Alaska, 99503
 Phone: 907-561-1011
 Fax: 907-563-4220
 www.pndengineers.com



95% SUBMITTAL - 1/11/2013

PORT LIONS DOCK

CIVIL SITE PLAN

C1.00

DESIGNED BY: [Name] DATE: JANUARY 2013
 CHECKED BY: [Name] DATE: PROJECT NO: 111120