

Agency: Commerce, Community and Economic Development**Grants to Named Recipients (AS 37.05.316)****Grant Recipient: Anchorage Park Foundation****Federal Tax ID: 412205907****Project Title:****Project Type: Remodel, Reconstruction and Upgrades**

Anchorage Park Foundation - Kincaid Park Beach Trail Reconstruction

State Funding Requested: \$50,000**House District: Anchorage Areawide (11-27)**

One-Time Need

Brief Project Description:

Reconstruct Trail to Kincaid Beach with Youth Employment in Parks in Kincaid Park. Live.Work.Play. Trails Initiative Project.

Funding Plan:

Total Project Cost:	\$50,000
Funding Already Secured:	(\$0)
FY2015 State Funding Request:	<u>(\$50,000)</u>
Project Deficit:	\$0

Funding Details:

Youth Employment in Parks utilizes project funding from a variety of sources: state, federal, municipal, Rasmuson and other private support.

Detailed Project Description and Justification:

Live.Work.Play. Trails Initiative Project.

Kincaid Beach is a well visited area of Kincaid Park, yet it is not accessible by a defined trail. The small social path that juts off of the Coastal Trail is overgrown, and eroding down the short bluff. With some planning and trail work, this path could be more defined and be made more sustainable, allowing easier access to the beach, while at the same time protecting the natural environment from unnecessary wear and tear by undirected visitors. This kind of soft surface trail project is ideal for the Youth Employment in Parks crews. By utilizing YEP we can eliminate the use of heavy equipment that could damage the Coastal Trail.

In the summer of 2014, the Anchorage Park Foundation and Parks & Recreation Department plan to complete improvements in Kincaid Park with the help of youth and community volunteers. We invite the Alaska State Legislature to join us in investing in the future of Kincaid Park and the Anchorage community.

Fix-It List Priorities

- Clearly designate trailhead
- Design and install sustainable beach access
- Re-vegetate existing social trail

Project Timeline:

Summer 2014 with Youth Employment in Parks teens

Entity Responsible for the Ongoing Operation and Maintenance of this Project:

Municipality of Anchorage

Grant Recipient Contact Information:

Name: Beth Nordlund
Title: Executive Director
Address: 3201 C Street, Suite 110
Anchorage, Alaska 99503
Phone Number: (907)274-1004
Email: Beth@AnchorageParkFoundation.org

Has this project been through a public review process at the local level and is it a community priority? Yes No

For use by Co-chair Staff Only:

11:54 AM 5/13/2014

Anchorage Park Foundation

Since 2004, the Anchorage Park Foundation has invested more than \$18 million in Anchorage parks, trails and recreation programs. Join us this summer to revitalize parks in your district.



2013

CAPIS Project Number

59672

Legislative District: J - 19

Anchorage Park Foundation

Anchorage has 10,946 acres of municipal parkland, 223 parks, and over 250 miles of trails and greenbelts linking neighborhoods with natural spaces.

The Anchorage Park Foundation partners with the Parks & Recreation Department to promote Healthy Parks and Healthy People in the Anchorage community. Together, we revitalize the safety, function, and appearance of Anchorage parks and the neighborhoods that surround them.

The Anchorage Park Foundation mobilizes public support and financial resources for Anchorage parks, trails, and recreation opportunities. Do you have a vision for parks, trails, open spaces and recreation in Anchorage? Consider the Anchorage Park Foundation your opportunity to fund community projects through public-private partnerships.

Tax ID Number: 41-2205907

907.274.1004



Anchorage Park Foundation

Kincaid Park: Reconstruct Trail to Beach w/ YEP

Kincaid Beach is a well visited area of Kincaid Park, yet it is not accessible by a defined trail. The small social path that juts off of the Coastal Trail is overgrown, and eroding down the short bluff.

With some planning and trail work, this path could be more defined and be made more sustainable, allowing easier access to the beach, while at the same time protecting the natural environment from unnecessary wear and tear by undirected visitors.

This kind of soft surface trail project is ideal for the Youth Employment in Parks crews. By utilizing YEP we can eliminate the use of heavy equipment that could damage the Coastal Trail.

In the summer of 2014, the Anchorage Park Foundation and Parks & Recreation Department plan to complete improvements in Kincaid Park with the help of youth and community volunteers. We invite the Alaska State Legislature to join us in investing in the future of Kincaid Park and the Anchorage community.



Project Cost Estimate

Project Budget	Cost
Professional Trail Design and Youth Oversight	\$15,000
Labor and Materials	\$35,000
TOTAL	\$50,000

2013 Request

State Funding Request	\$50,000
-----------------------	----------

Kincaid Park

Reconstruct Trail to Beach with Youth Employment in Parks

Just say “YEP” to Teens Restoring Streambanks in Anchorage, Alaska

Alaska teens contributed to ongoing habitat improvement efforts within the Chester Creek watershed in Anchorage by giving two sections of the creek’s riparian zone a major makeover this past June. Although riparian habitat makes up a relatively small percentage of a watershed’s total land area, it provides critical fish and wildlife habitat, areas of ground water recharge, natural flood and erosion control, and water quality protection. Chester Creek provides habitat for salmon, trout, and char, and creekside trails and greenbelts provide movement corridors for native wildlife like moose.

In 2009, a variety of partners (including the U.S. Fish and Wildlife Service’s Anchorage

One of 26 different creeks in the Anchorage Bowl, Chester Creek flows west from its headwaters in the Chugach Mountains through the heart of Anchorage and into the Knik Arm of Cook Inlet via Westchester Lagoon. Over 65,000 Anchorage residents live within its 27 square mile watershed (just shy of half the size of Washington, D.C.).

Field Office) completed a multi-million dollar project at the mouth of Chester Creek to restore its connection to Cook Inlet and allow migrating salmon free passage upstream. However, there is still much work to be done: both Chester Creek and Westchester Lagoon are included on Alaska’s List of Impaired Waterbodies due to high fecal coliform bacteria levels and well over a third of the culverts in its watershed are classified as barriers to fish passage. Other issues include (but aren’t limited to) runoff and invasive riparian plants like reed canary grass and European bird cherry.

Hired as part of the Anchorage Park Foundation’s “Youth Employment in Parks” (YEP) program, teens spent an entire week working alongside local habitat restoration experts to plant hundreds of native trees and shrubs along Chester Creek where it flows through Valley of the Moon Park (*below*). They also added topsoil

Below: *YEP crews planted hundreds of native trees and shrubs along Chester Creek where it flows through Valley of the Moon Park near downtown Anchorage.* Katrina Mueller/USFWS



and reseeded the bank near the outlet of Westchester Lagoon with native grasses where efforts to control reed canary grass have been ongoing (pictured below).

These activities align with YEP's goal to "positively engage a new generation of diverse youth leaders with conservation and the Anchorage community through meaningful training, employment, and outdoor recreation." The project also supported the Service's mission of working with others to conserve fish, wildlife, and their habitats, as well as one of the agency's national priorities: connecting people with nature.

In fact, APF received Secretary Salazar's national Partners in Conservation Award in 2010 for the YEP Program. These types of projects provide the perfect framework for participating

teens to learn about local creeks, fisheries, water quality, and habitat restoration techniques. They also contribute significantly to the collective, ongoing effort to improve habitat quality and connectivity within the watershed.

Since the inception of YEP in 2007, the Service has provided funding and staff time on an annual basis to support a week-long YEP habitat restoration project targeting Anchorage creeks. The week-long 2013 Chester Creek project (including the cost of the crew, contractor, and materials) was supported by the Alaska Department of Fish and Game Cost Share Program agreement with the Service, and the Service's Coastal Program and Partners for Fish and Wildlife Program. The Service's contribution to the 2013 Chester Creek project was also matched dollar for dollar by APF.



A major fish passage restoration project at the creek's mouth now allows passage of salmon into the watershed.

K.Mueller/USFWS



Hard work brings a smile from a teen employed by YEP (left) during restoration activities along Westchester Lagoon's shoreline. For many, this is their first job.

Youth Employment in Parks

A program of the Anchorage Parks & Recreation Department
and the Anchorage Park Foundation



Beaver Pond Trail in Girdwood

2013 Annual Program Report

ANCHORAGE



PARKS & RECREATION





Youth Employment in Parks

A joint program of the Anchorage Parks & Recreation Department
and the Anchorage Park Foundation

What is YEP?

Youth Employment in Parks (YEP) is a joint program of the Anchorage Park Foundation and the Municipality of Anchorage's Parks & Recreation Department. YEP aims to positively engage a new generation of diverse young leaders as conservation stewards of public lands and of the Anchorage community through meaningful job training, employment and education.



Since 2007, YEP has hired over 200 Anchorage youth to complete park improvement projects. The teens learn valuable natural resource management job skills by building trails and restoring stream banks. In addition, youth engage in relevant educational opportunities to increase their civic engagement, environmental awareness, recreational activity and leadership skills. At the end of the program, Mentorship Week links their new skills to future careers.

YEP puts teens to work making a difference in our community!

YEP Goals

- 1) Create a meaningful "first job" experience and open a career pathway for diverse youth to work in the outdoors and natural resources fields.
- 2) Expose youth to the outdoors and connect them with nature to support healthy lifestyles.
- 3) Provide youth with community action skills and character development so they may become effective citizens.
- 4) Build community through enhanced recreation opportunities, parks and public spaces.



Accreditation

In 2013, Youth Employment in Parks became one of the first provisionally accredited youth corps programs in the country by the Corps Center of Excellence. Accreditation assures partner agencies and donors of the quality of the program.

Guidelines for accreditation were determined by the 21st Century Conservation Service Corps Federal Advisory Committee. The committee was composed of leaders of corps programs, representatives from federal and industry partners.

Alaskan members of the committee included:

Beth Nordlund,
Anchorage Park Foundation

Carol Ann Wren,
Cook Inlet Tribal Council



Senior Crew Members

Each YEP crew has a Senior Crew Member, hired to help lead crews on projects and serve as peer role models.

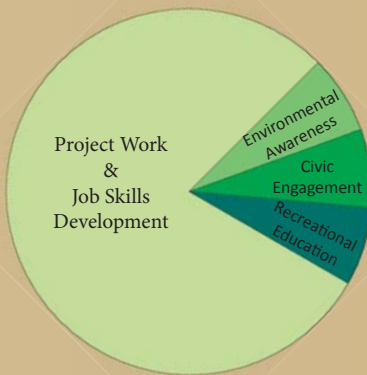
Senior crew members are selected from previous YEP crew members and youth leaders in the community.

After a summer of work with crew leaders developing technical skills, teamwork, and leadership, Senior Crew Members are challenged to develop a Community Action Project.

In 2013 the Senior Crew Members organized a YEP Arts and Crafts Fair.

Program Design

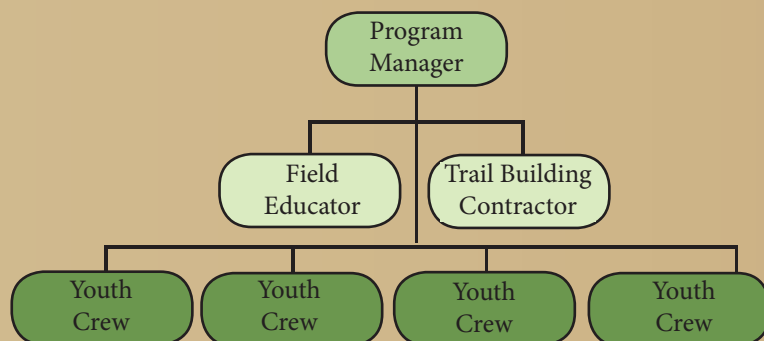
Youth Employment in Parks is modeled after the Civilian Conservation Corps (CCC) program of the 1930s. YEP is designed as a service learning program which balances the work product with job skills training, recreational activities, civic engagement and environmental education. YEP employs staff to design and implement relevant service learning activities that will help the youth to realize the meaningfulness of the work and become engaged citizens.



The summer program lasts for ten weeks and coincides with the Anchorage School District schedule to ensure opportunities are available to area youth without interfering with school schedules.

Staff Structure

The staff is divided into four field crews that consist of five youth crew members, a youth senior crew member and an adult leader. On work sites there is a professional trail building contractor to manage the project and ensure a professional quality of work. The field educator manages the service learning and educational components for the program.



Youth Employment in Parks

A joint program of the Anchorage Parks & Recreation Department
and the Anchorage Park Foundation

Recruitment

In 2013, YEP held four public outreach sessions at Fairview Recreation Center, Spenard Recreation Center, Mountain View Boys & Girls Club and the Muldoon Boys & Girls Club. These sessions reached approximately 40 youth.

Youth Employment in Parks' main outreach and recruitment tool was 11 High School presentations.

The Alaska Department of Labor's Youth Hiring Center was a major recruitment partner, providing additional outreach and working with the YEP program manager to organize application workshops for 62 Anchorage teens.

Interviews and Participant Selection

As part of the first job experience, YEP interviews all crew member applicants who meet the basic qualifications:

- a resident of the Municipality of Anchorage
- 16-19 years old on June 1st, 2013
- engaged in high school or GED education

With 115 qualified applicants, interviewing becomes a challenge. Youth Employment in Parks engages community partners to help interview and select applicants.

Our community partners interviewed 107 applicants and selected 20 YEP crew members.

Interview and Selection Partners

Alaska Youth for
Environmental Action

Alaska Department of Labor

Anchorage Parks &
Recreation Department

Anchorage Park Foundation

Anchorage Community Land
Trust

Friends of the Anchorage
Coastal Wildlife Refuge (FAR)

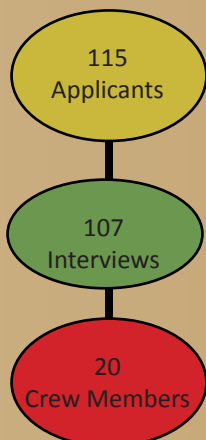
Great Land Trust

Recreational Equipment Inc
(REI)

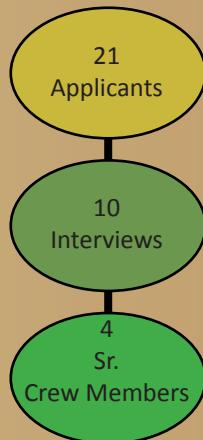
Wells Fargo

**Thank you for
helping to select the
2013 YEP Crew!**

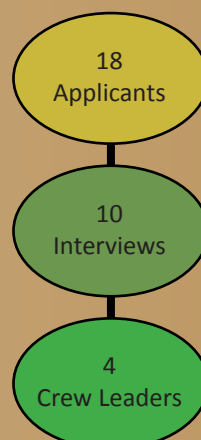
Crew Members



Senior Crew Members



Crew Leaders





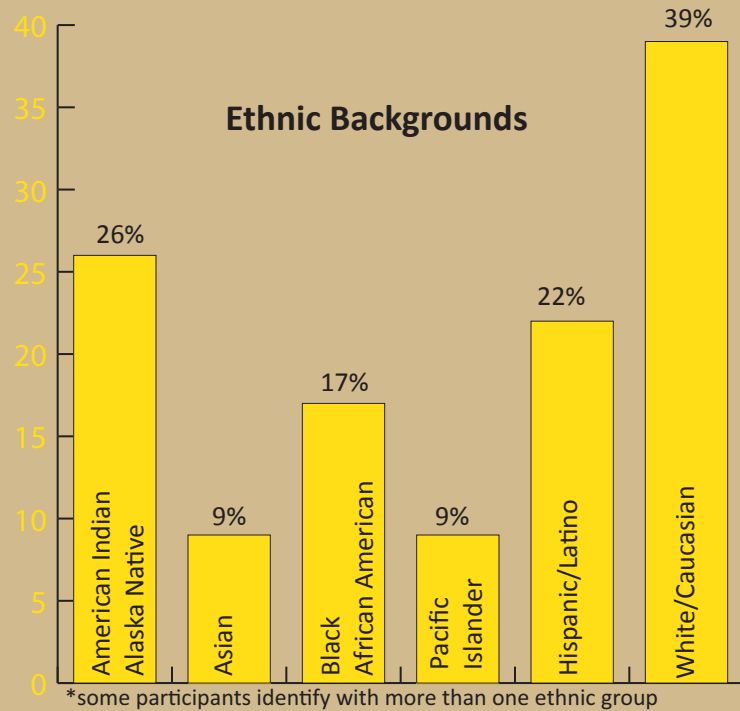
Participant Backgrounds

- 21% live in a single parent home
- 43% have families that are considered low income
- 18% have parents who are unemployed
- 35% are from military families
- 13% are members of Alaska Native corporations
- 9% experience a disability
- 22% identify as LGBT

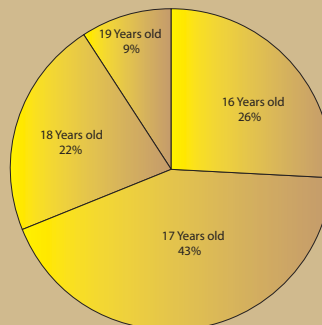
In 2013, YEP was a first job for 8 Participants

Opportunities For All

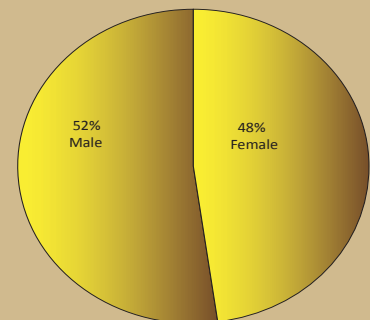
The YEP program seeks to hire from all areas of Anchorage. The program coordinates with local recreation centers, hiring centers, and the Anchorage School District to get applicants. One of the strengths of the program are participants who come from a large range of backgrounds. Anchorage features a diverse ethnic and socioeconomic population and YEP strives to represent that diversity.



Age Distribution



Gender Ratio

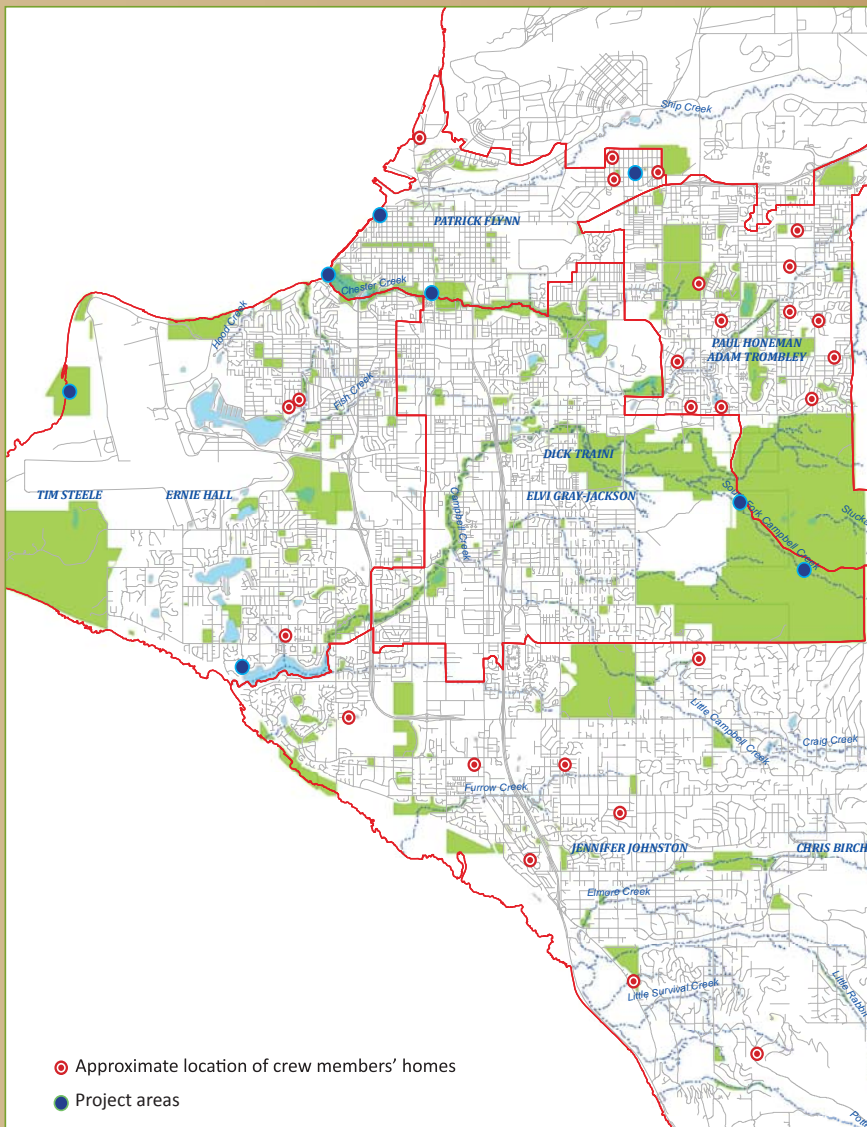


Youth Employment in Parks

A joint program of the Anchorage Parks & Recreation Department
and the Anchorage Park Foundation

We Reflect Anchorage

YEP teens represent neighborhoods throughout the Anchorage bowl.



10 High Schools Represented

AVAIL

- Bartlett High School
- Benny Benson
- Dimond High School
- East High School
- Frontier Charter School
- Grace Christian School
- South High School
- Stellar Secondary School
- West High School

6 Languages Spoken

- French
- Hmong
- Japanese
- Samoan
- Spanish
- Thai

26% speak a language other than English at home



Why did you apply to YEP?



Trails Curriculum

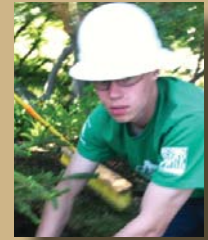
YEP Crew Members receive specialized training based on the Urban Trails Curriculum.

This curriculum was developed for the YEP program by professional Alaskan trail builders under a grant from the Alaska Department of Natural Resources.

The curriculum is designed to develop the next generation of trail builders and resource managers in large urban areas with extensive trails systems like Anchorage.

It adapts skills used to build trails in the wilderness to build successful, sustainable trails in an urban environment.

“To earn money for College while doing a job that allowed me to be outside”
- Carson, YEP Senior Crew Member



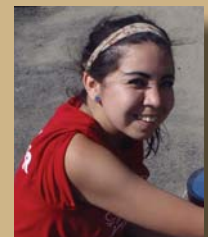
“I want to make a difference in my community”
- Tyler, YEP Crew Member

“I wanted an opportunity to be a part of something great and to help give back to a community I love”
- Cheng, YEP Crew Member



“I applied to YEP because I wanted to learn how to work”
- Mina, YEP Crew Member

“I wanted to gain skills and experience with a job that is engaged in our community”
- Jamie, YEP Crew Member



Youth Employment in Parks

A joint program of the Anchorage Parks & Recreation Department
and the Anchorage Park Foundation

Education

Youth Employment in Parks includes a strong educational element. The program operates under the philosophy that understanding why your work matters increases ownership and stewardship in your project and your community.

Educational aspects are tied directly to the project crew members work on. YEP focus on four areas of education:

1. Job Skills
2. Environmental Education
3. Civic Engagement
4. Recreation Activity



First day of YEP 2013

Job Skills for Successful Futures

Job skills developed in the YEP Program:

- Basic on-the-job conduct
- Punctuality
- Preparation for the work day:
being well-rested, packed lunch
and a positive attitude
- Workload management
- Conflict resolution
- Team building
- First Aid & CPR certification
- Theory and philosophy of the
management of public lands
- Resume building
- Interview skills
- Leave No Trace training for
minimum environmental impact
during outdoor activities.
- Work place safety
- Tool use and safety

YEP strives to give crew members the tools and stamina to stand out amongst their peers as skilled and reliable employees, stewards of their community and leaders of the future.



Anchorage Assembly Presentation

The Anchorage Assembly offered YEP the opportunity to present their work at an Assembly meeting. Crew members each spoke before the Assembly about their YEP experience and learned how local government works.

The Assembly asked crew members about their projects and thanked them for helping make Anchorage a great city to live in.



Civic Engagement Challenge

This summer the YEP crew members were challenged to engage in voluntary community service outside of the YEP work day. Crew members assisted with volunteer Park Fix-its, local non-profit agencies and the Mayor's Marathon.

YEP teens logged over 150 volunteer hours over the summer. Simon Frohlich, winner of the Challenge, personally logged almost 50 hours.

On average, YEP teens report they engage in 9 hours of community service during the school year.

YEP Park Improvement Projects

Valley of the Moon Stream Bank Restoration

At Valley of the Moon park, crew members worked with a landscaping contractor who specializes in stream bank restoration. In this popular park, YEP restored 600 feet of stream bank along Chester Creek. The crew planted 2,500 willow cuttings, 1,000 alders & prickly roses and twenty to trees stabilize the stream bank. Crew members worked closely with the contractor to install stone staircases, to create environmentally friendly, safe public access to Chester Creek.



These staircases will guide park users to safely access the creek with out trampling the new plantings and destabilizing the stream bank. This project was sponsored by the US Fish & Wildlife Service and the Alaska Department of Fish & Game.

Environmental Education

Crew members engaged in water quality testing and investigated the ecology of Anchorage's streams before they began work on stream bank restoration at Valley of the Moon Park. To acquire comparative samples, two crews tested water samples from Campbell Creek at Far North Bicentennial Park, while two other crews tested samples from Chester Creek at Valley of the Moon Park. Crew members tested for pH, temperature, phosphate levels, nitrate levels, dissolved oxygen and coliform bacteria. While most test results indicated healthy streams, both Campbell Creek and Chester Creek tested positive for coliform bacteria.



Katrina Mueller from the US Fish and Wildlife Service also visited YEP to show crew members the wide variety of small animals, including macro invertebrates and small fish, that live in Anchorage's streams and depend healthy streams to survive.

Youth Employment in Parks

A joint program of the Anchorage Parks & Recreation Department
and the Anchorage Park Foundation

Civics Education

Crew members watched a short film about climate change and indigenous cultures, and discussed the impact of American lifestyles on others around the world. They calculated their own “ecological footprints” to see how our lifestyles and everyday decisions reverberate beyond our own parks and communities, influencing the environment as well as other cultures and peoples.

Recreation

Sara Boario from the US Forest Service spoke to crew members on the wide variety of ways youth can recreate on public lands and explained the importance of having open dialogue and how public lands should be used. Crew members were also introduced to the array of job opportunities that exist in public land agencies.

Westchester Lagoon Re-vegetation

YEP removed tarps installed 2 years ago to mitigate 1,400 square feet of invasive Reed Canary Grass. Crew members broke up and removed the tightly knit root system before covering the area with sixty cubic yards fresh topsoil. 200 pounds of a native grass seed mix was spread over the area to re-vegetate and prevent erosion.



Environmental Education

Crew members broke into small groups and discussed the impact of invasive plants and animals on ecosystems in Anchorage. In addition to identifying Native & Non-Native plants, crew members discussed ways to prevent the spread of invasive plants.



Commuter Challenge

The Bicycle Commuters of Anchorage hosted a summer long Commuter Challenge. Youth Employment in Parks organized a team to promote eco-friendly, healthy transportation to work.

Participants could walk, bicycle commute or take the public transportation.

YEP came in 3rd place for organizations of 20-30 people in Anchorage.

Crew leaders, senior crew members and crew members logged 612 eco-friendly commuter trips to and from YEP this summer.



Crew member comments on projects

“We were able to see how our work affected the people in the community.” - Mellina

“I felt like I was doing something good” - Abi

“Each project kept me engaged” - Daniel

“The progress we made was very noticeable and the community was very inspiring” - Kes-Sativa

“I expected the projects to be fun and all of them were fun!” - A

Tony Knowles Coastal Trail Vegetation Maintenance

YEP worked along the Anchorage’s famous Tony Knowles Coastal Trail. Crew members trimmed vegetation back along seven miles of the trail, trimmed scenic view sheds and painted dozens of bollards, twelve benches and seven bike racks to improve safety and visibility.

Environmental Education

Crew members were introduced to local plants, both local and invasive, to help them identify what they were trimming along the Coastal Trail. A plant scavenger hunt and identification competition to test their knowledge.

Civics Education

Park users sometimes find homeless camps hidden along our greenbelt Trails. YEP engaged in activities designed to increase their awareness of economic inequality in Anchorage.

At Bean’s Cafe, crew members engaged in a service learning project to help make the grounds around the building safer by cleaning up debris and trimming brush. They also had the opportunity to talk with the Bean’s Cafe staff about the challenges they face.



The YWCA invited YEP to their monthly Social Dialogue: *Leading the Charge: Alaska Youth and Social Justice*. Crew members interacted with a panel of youth speakers on topics including LGBT challenges, racism and foster care.

Recreation Activity

The Coastal Trail serves as a hot spot for both commuter and recreational cycling. YEP rented bikes for crew members to enjoy this popular activity while scoping out their upcoming project. Crew members learned about bike safety and bike trail etiquette.

Youth Employment in Parks

A joint program of the Anchorage Parks & Recreation Department
and the Anchorage Park Foundation

Beaver Pond Trail - Girdwood

The Girdwood Trails Committee sponsored a YEP project on the Beaver Pond Trail. YEP made tread enhancements, built 200 feet of new boardwalk out of native materials milled on site, forty feet of rock armoring in a seasonal creek and brushed two miles of trail corridor to improve safety and accessibility. Crew members successfully met their goal of completing trail improvements all the way to the Chugach State Park border.

Environmental Education

As a result of the 1964 earthquake, Girdwood has a diverse set of biomes. Crew members discussed the unique environmental challenges facing people living in different biomes and learned how topography impacts ecology and creates distinct biomes, particularly in the Chugach Range surrounding Girdwood. Crew members then created 3-D clay representations of a topographic map of Girdwood and the surrounding Chugach mountains.

Civics Education

Girdwood is a popular tourist destination in the summer for its trails and festivals and in the winter for the Alyeska Ski Resort. Crew members learned about the impact and influence of tourism on Alaskan economy and culture by creating their own tv commercials for fictional Alaskan tourism companies.



Recreational Activity

In preparation for the long hike to their project work, the crew hiked the Winner Creek Trail. Crew members learned about safe hiking, trail etiquette and proper hydration.



Crew Member of the Year

YEP recognizes one crew member each year for their commitment, team work, positive attitude and leadership. This year YEP recognized Savannah Commerford.



Most Improved Crew Member

YEP recognizes one crew member who has gained the most from the program. This crew member has shown improvement in attitude, work ethic and team work. Congratulations to Brendan Hughes!



Potter's Marsh Discovery Day/Get Outdoors Day

This popular event started in 2008 as the grand opening of the new boardwalk at Potter Marsh and has since morphed into an annual event highlighting the marsh and encouraging families to get outside and learn about the marsh.

YEP teamed up with event partners to make National Get Outdoors day a great success for YEP's first field day. The event involved macro invertebrates, building bird nests, archery, water quality testing, spin casting, boating safety, bird bands, bear awareness, birding, salmon education, and much more.

The day ended with the release of a rehabilitated bald eagle.

William B. Lyons Park Landscaping

YEP landscaped the William B. Lyons Park in Mountain View. Located behind the Mountain View Recreation Center, this park is heavily used by neighborhood kids from the Boys & Girls Club. Crew members planted 21 maple and ash trees, 132 deciduous shrubs, 69 evergreen shrubs and 346 perennials. The park looks great and provides a beautiful and safe place for children to play.

Environmental Education

YEP toured the Refugee Gardens in Mountain View and learned about community gardens through a presentation by State Refugee Coordinator, Karen Ferguson.

Crew members discussed local Alaska grown food choices as well as an introduction to organic versus conventional food production. Crew members had the opportunity to bring their palate into the learning process as they conducted an "Is it organic or non-organic?" taste test.



Civics Education

Alaska Public Radio Network director, producer and reporter Annie Feidt presented to YEP. Feidt spoke to crew members about her initiation into journalism and the media's role in shaping local issues.



YEP was visited by an Americorps National Civilian Community Corps (NCCC) team during this project. The team spoke to crew members about the meaning of national service and introduced different service opportunities available to youth.

Youth Employment in Parks

A joint program of the Anchorage Parks & Recreation Department
and the Anchorage Park Foundation

Far North Bicentennial Park Trail Maintenance

YEP constructed 2,300 feet of new trail connecting the 4.5K loop and the Campbell Airstrip parking lot. This new connector will improve safety



and reduce conflict between dog sleds and other user groups. On the Moose Loop, crew members rerouted 1,400 feet of trail to avoid sections of standing water that occurs most of the year. YEP built 900 feet of new singletrack mountain biking trails to connect with the Black Bear Trail. On the Old Rony Trail, YEP built a new 24 foot bridge to replace a 16 foot storm damaged bridge.

Environmental Education

Tying into earlier activities crew members learned about salmon life cycles, YEP toured the William Hernandez Sport Fish Hatchery.

The hatchery gave crew members the opportunity to see real salmon development in a semi-natural setting.

Elizabeth Manning, of the Alaska Department of Fish and Game, discussed a number of the issues confronting wildlife and wildlife managers on the Wildland Urban Interface here in Anchorage.

Municipal Forester Maria D'Agostino worked with crew members to collect data from trees in Far North Bicentennial Park that fell during last fall's wind storms. Crew members learned the importance of urban forestry in Anchorage's unique Wildland Urban Interface.



Civics Education

YEP crew members researched and discussed the economic and environmental pros and cons of the proposed Pebble Mine project.

Recreation Activity

Crew members visited the Bureau of Land Management's Campbell Creek Science Center where they participated in the BLM's ropes course. Each crew was presented with a number of challenges throughout the course and the YEP crews showed great teamwork and enthusiasm as they were able to conquer each of the obstacles along the course.



Crew Members of the Week

A rewarding part of a job well done is being recognized for your hard work.

Each week, YEP recognizes individuals hard work by nominating a "Crew Member of the Week."

These are outstanding individuals that have shown personal improvement, gone the extra mile or shown leadership at project sites.





Community Action Project

YEP Senior Crew Members were tasked with developing a Community Action Project that raised awareness on an issue in their community. This summer they chose to tackle recycling by hosting a Recycled Arts & Crafts fair at Margaret Eagan Sullivan Park.

Crew members held activities and crafts for kids using household recycled materials. To parents, they distributed handouts about recycling opportunities in Anchorage.

Over 70 community members attended.

Campbell Creek Estuary Natural Area - New Trail Construction

Crew members built new trails at the Campbell Creek Estuary Natural Area. The Campbell Creek Estuary is an important breeding ground for many types of birds. The Great Land Trust acquired the estuary in 2010 order to protect it and provide educational opportunities to Anchorage residents. YEP built 1,600 feet of new ADA accessible trail, 900 feet of new trail to the Sand Hill Crane overlook and 26 feet of fiberglass board walking.



Environmental Education

Since estuaries have more biodiversity than any other ecosystem, crew members learned about biodiversity. The Alaska Department of Fish and Game gave YEP over 500 cards with information and pictures of nearly every species in Alaska. Using the knowledge of energy webs and ecosystems they learned earlier in the season, crew members placed the cards they found in an energy web to see if they could maintain a healthy ecosystem.

Civic Engagement

Phil Shephard from the Great Land Trust and Barbara Carlson from Friends of the Anchorage Coastal Wildlife Refuge (FAR) discussed the role the Great Land Trust and FAR played in helping to transform this former homestead site into a protected public land. They took crew members on a tour of the site and pointed out the areas where YEP would be establishing the first trails at the estuary.

Recreation Activity

Chris Maack of FAR, Bird TLC, and Anchorage Audubon Society introduced YEP to the fascinating world of birding. Crew members were given binoculars and sent to locate avian species within the estuary. Crew members successfully spotted a number of different birds, including a peregrine falcon and sand hill cranes.

Youth Employment in Parks

A joint program of the Anchorage Parks & Recreation Department
and the Anchorage Park Foundation

Mentorship Week

At the end of the summer program, teens participated in Mentorship Week, focused on connecting crew members to successful futures. Throughout the summer, the program trains and prepares youth for employment after YEP, Mentorship week shows crew members what the next step is the skills they have learned.

Activities for Mentorship Week included:

- Job Shadowing
- Resume Workshop
- National Service Opportunities
- Youth Civic Engagement Opportunities
- Educational Opportunities
- Financial Awareness Training with Wells Fargo
- Conservation Careers Panel
- Anchorage Assembly Presentation
- Financial Aid for College

Mentorship Week Presenters

YEP enlists community partners to present a variety of career, educational and civic engagement opportunities to YEP crew members.

Thank you to all of our 2013 Presenters!

Alaska Department of Labor Youth Hiring Center, Alaska Department of Fish & Game, Alaska Teen Media Institute, Alaska Youth Advocates, Alaska Youth for Environmental Action, Alaska Pacific University, Alaska Vocational Technical Center, AWAIC (Abused Women's Aid In Crisis), Bureau of Land Management, BP, Job Corps, SAGA Americorps, Student Conservation Association, & Wells Fargo

“Just as the YEP students appreciate Wells Fargo’s financial and education commitment, Wells Fargo appreciates the work the YEP students do to enhance our parks in Anchorage. Partnership and stewardship at its best.”

- Judith Crotty, Vice President, Wells Fargo



Job Shadowing

During mentorship week, YEP crew members had an opportunity to job shadow local professionals in careers they are interested in.

Crew members shadowed with:

- Audubon Alaska
- Alaska Air Guard
- Alaska Court System
- Alaska Department of Environmental Conservation
- Alaska Department of Fish & Game
- Bettisworth North Architects
- College Village Animal Clinic
- IBEW
- Alaska Integrated Media
- Fire Station #14
- House of Harley Davidson
- Northstar Dental
- Master's Catering
- Walsh Sheppard Marketing
- United Physical Therapy



What is the SCA?

SCA provides college and high school-aged members with hands-on conservation service opportunities in virtually every field imaginable, from tracking grizzlies through the Tetons to restoring desert ecosystems and teaching environmental education at Washington, D.C.'s Urban Tree House.

SCA's YEP Alumni Crew

This year Youth Employment in Parks partnered with the Student Conservation Association (SCA) to give four YEP alumni an opportunity to take their experience a step further. The SCA recruited YEP alumni to use skills gained in YEP on more challenging projects with experienced crew leaders on city lands and on remote Federal Lands.



Projects

Bureau of Land Management - Campbell Creek Science Center
Alumni worked for two weeks removing hazard trees at the Smokejumper Trailhead and around the science center. They replaced and repaired moose fencing around the Aspen Ranch.

Municipality of Anchorage - Parks & Recreation Department
At University Lake Park, alumni made tread improvements to over 550 feet of trail. They enhanced and regraded bridge approaches in Far North Bicentennial Park. In Forsythe Park, alumni enhanced a Safe Route to School by removing and constructing a new bridge.

Chugach National Forest

Alumni spent 30 days living and working at Spencer Glacier. They sawed, cleared, swamped and brushed a quarter mile of new trail that extends from the bridge that crosses the Placer River to the glacier.

Recreation Trip

To finish off their experience, the alumni took a four day recreation trip and backpacked Resurrection Pass.

Youth Employment in Parks

A joint program of the Anchorage Parks & Recreation Department
and the Anchorage Park Foundation

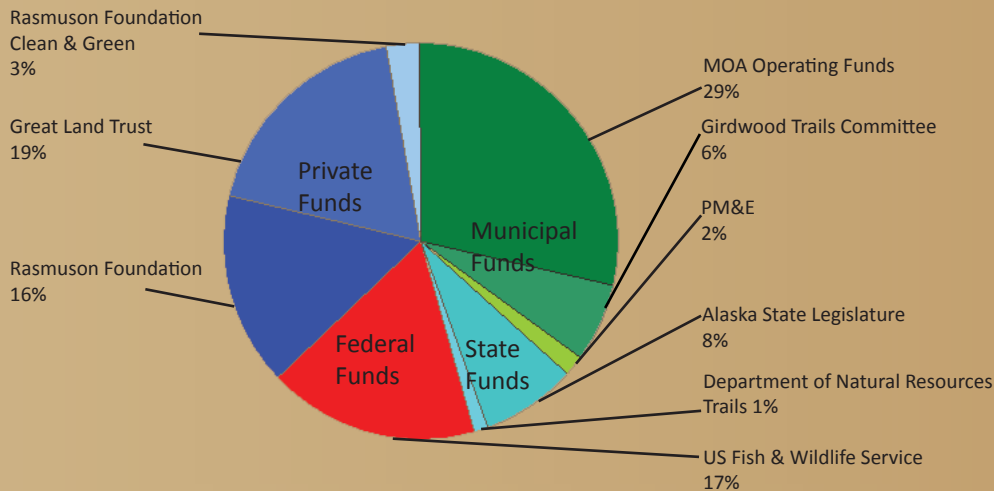
Funding for Youth Employment in Parks is a combination of public and private funds

In 2013 YEP was made possible through a combination of private and public funding directed to specific projects and activities. Funding sources this year include:

- Rasmuson Foundation
- Municipality of Anchorage
- Great Land Trust
- United States Fish and Wildlife Service
- Girdwood Trails Committee
- Alaska Department Of Natural Resources
- Alaska State Legislature

The unique combination of these funds helped make a difference in Anchorage parks and communities through the Youth Employment in Parks program.

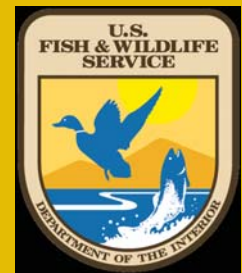
Public-Private Funding Partners



- 37% Municipal Funding
- 37% Private Funding
- 9% State Funding
- 17% Federal Funding

Each year, we must seek out new funding partners who want to make a difference with local youth in Anchorage parks.

Thank you to our
2013 YEP Funders





“It’s helped my ability to work with other people and helped me become part of the workforce”
- Alyeska



“I’ve learned a lot about working in tough situations”
-Gage

For more information please contact:
C. Allen Truitt
YEP Manager
907.343.4504
truittca@muni.org



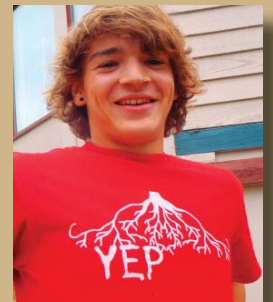
“I don’t ever want to work inside again” - Adrienne



“YEP has taught me valuable job skills and I’ve made some great friends” - Nyamekeye



“I proved to myself that I could do more and I can make a change in my community” - Melinna



“I learned that when you work hard, you can get anything done” - Austin



“I got to improve somewhere I visit every day” - Treyveon



AEDC
Anchorage Economic
Development Corporation

February 11, 2013

Beth Nordlund
Executive Director
Anchorage Park Foundation
Anchorage, Alaska 99516

Dear Ms. Nordlund,

I am writing on behalf of Anchorage Economic Development Corporation in support of the Anchorage Park Foundation (APF). The APF, through its focus on improving parks with neighbors and park users complements AEDC's Live.Work.Play initiative to make Anchorage the number one city in America by 2025.

The Play component of AEDC's initiative envisions that "By 2025 Anchorage has a rugged and health population because our homes are within a short distance of parks and trails that provide a natural outdoor experience. We participate in the very cultural and sporting events in which we are also spectators".

AEDC supports the work of APF, and in particular is happy to provide support to these trail projects:

- Trail Watch Safety Improvements
- Kincaid Park: Reconstruct Trail to Beach with Youth Employment in Parks
- Wonder Corridor Park Safe Route to School
- Far North Bicentennial Park Rover's Run Trail Safety Reroute
- Wildlife Habitat Area Park & Trail Upgrades
- Westchester Lagoon Nature Trail Safety Improvements
- Chester Greenbelt Trail Lighting
- Section 36: Park and Trail Development
- Kincaid Singletrack

AEDC will be working with the Rasmuson Foundation and APF to help make Anchorage the number one city to play. Please feel free to contact either myself or Archana Mishra, Communications Coordinator at: amishra@aedcweb.com any time about this matter.

Sincerely

Bill Popp

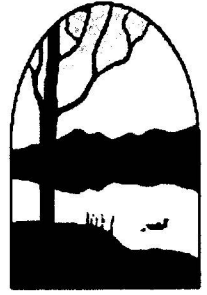
President and CEO
Anchorage Economic Development Corporation
510 L Street Suite 603
Anchorage AK 99501

Sand Lake Community Council

Sand Lake Community Council • 2617 W.66th Ave. • Anchorage, Alaska 99502

E-Mail: mail@sandlakecc.org or slccpresident@gmail.com

Web: <http://www.sandlakecc.org>



Date: February 4th 2012

Anchorage Parks Foundation
3201 C st. Suite 110 Anchorage, AK 99503

To Whom It May Concern:

The Sand Lake Community Council wishes to express our support for the Anchorage Parks Foundation 2013 Legislative requests for parks in our Community Council district:

- 1. Campbell Creek Estuary and Natural Area;
- 2. Jewel Lake Dock - ADA Accessible;
- 3. Emerald Hills Park;
- 4. Kincaid Park Trail to Beach Reconstruction;
- 5. Trail Watch Safety - Youth Employment in Parks Program.

Members our Council spoke on each of the items, and we look forward to these requests being funded, and the programs moving forward. Thank you for your time.

Sincerely,

A handwritten signature in black ink, appearing to read 'Daniel Burgess', with a long horizontal line extending to the right.

Daniel Burgess

Sand Lake Community Council President

Dear Anchorage Legislators-

I am an active trail user, trail builder and mountain biking program administrator and coach. As such I have seen first-hand the benefits of having Anchorage's Youth Employment in Parks program making social trails sustainable, hardening trails in disrepair, and building new trails in planned areas where Anchorage wants to recreate. Thank you for considering funding for any trails project that has the support of the Anchorage Park Foundation and Live.Work.Play. I appreciate their work.

For several years I have been part of a loose group of volunteers and trail user groups that work together to make sure the trails at Far North Bicentennial Park are used appropriately and maintained to standard. Frankly, it is ground-breaking work to have dog mushers, equestrians, mountain bikers, runners, and all other manner of trail user, agree on trail policy. I am proud of our collaboration. We agree on so many things, including the community trail benefits of Youth Employment in Parks.

Youth Employment in Parks is cost effective, promotes park stewardship among youth (many of whom are disadvantaged), and we get to have sustainable trails when the projects are complete. I couldn't be happier with their work. We need more YEP projects!

Sincerely,

Darcy Davis

Singletrack Advocates, steering committee member

Mighty-Bikes, co-administrator/coach