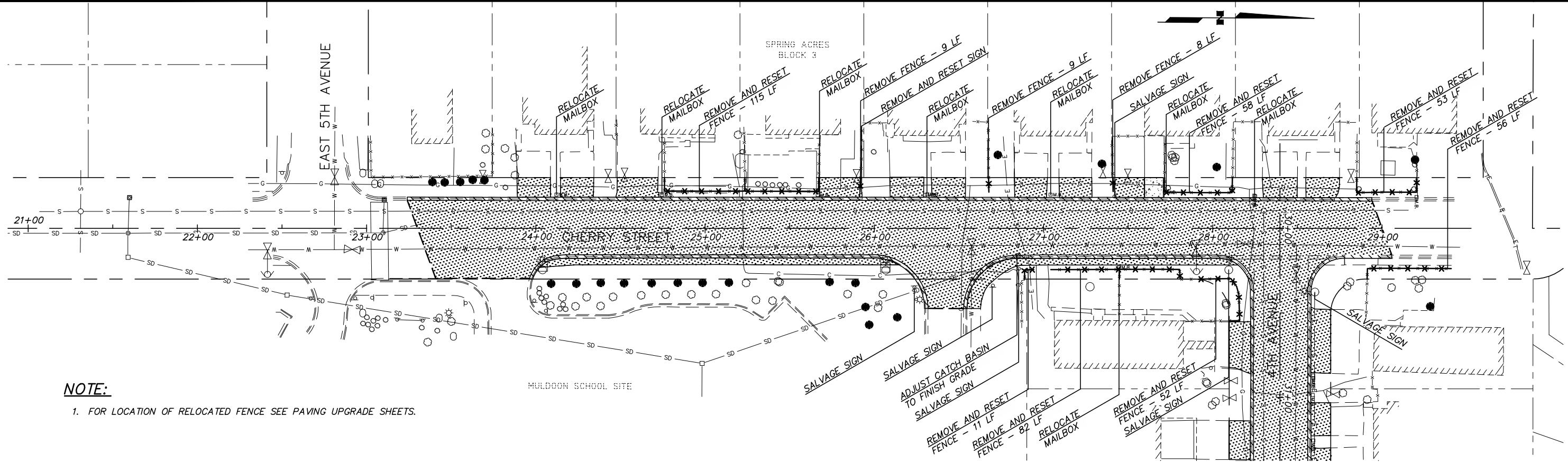
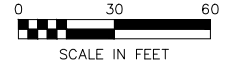
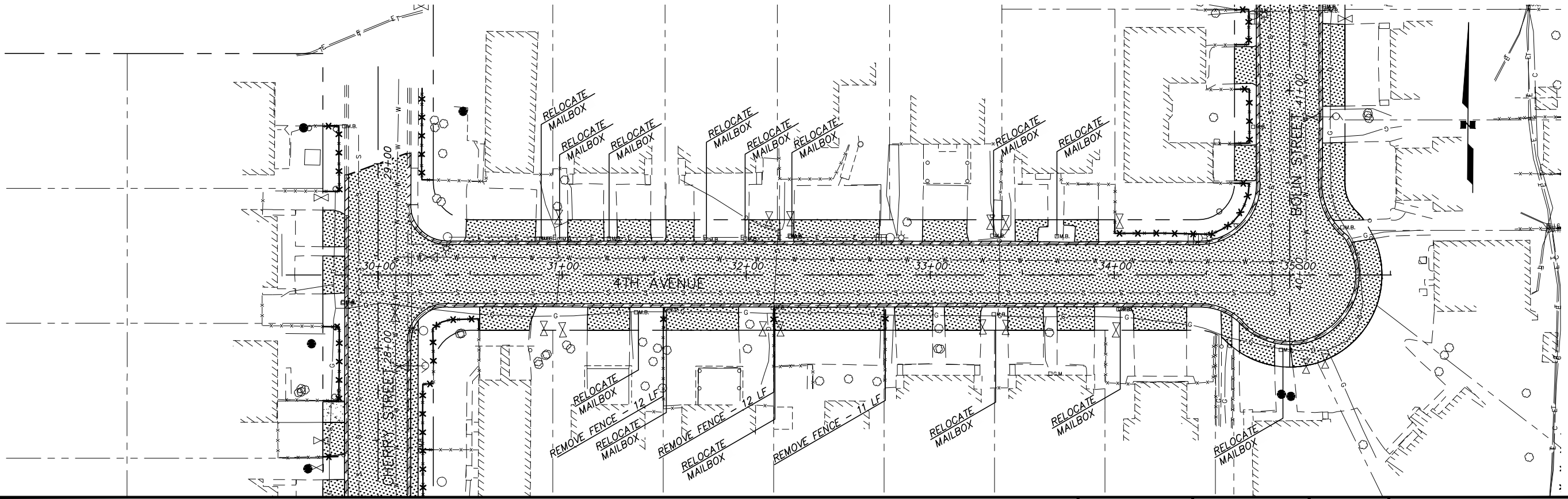


H:\Jobs\12-012 MOA Civil Engineering Term Agreement\09-Spring Acres Sudw. Road and Drainage Improvements\03-Design\CAD\Drawings\12012-09-08-09-demo, 1=20, 02/17/14 at 15:31 by CDB
 LAYOUT: DEMO-08
 VIEW: SH105_H_X7700_SHT09_H_X7700_SHT09_H_X7700
 XREF: 12012-09-BASE, 12012-09-ROW, 12012-09-X01, 12012-09-BD01



NOTE:
 1. FOR LOCATION OF RELOCATED FENCE SEE PAVING UPGRADE SHEETS.



FIELD BOOKS	BM NO.	LOCATION	ELEV.	DATA	DRAWN BY	CHECKED BY	DATA	DRAWN BY	CHECKED BY	REV	DATE	DESCRIPTION	BY	REV	DATE	DESCRIPTION	BY
DESIGN: HDL 12-005 MOA	NAME		ELEV.	BASE			TELEPHONE										
STAKING:				TOPOGRAPHY			ELECTRIC										
ASBUILT:				PROFILE			CABLE TV										
CONTRACTOR:				SANITARY SEWER			DESIGN										
INSPECTOR:				STORM SEWER			QUANTITIES										
				WATER			MUN. FINAL CHECK										
				GAS													
CONSTRUCTION RECORD				VERTICAL DATUM				PLAN CHECK				REVISIONS					

HDL
 HATTENBURG DILLEY & LINNELL
 Engineering Consultants

- ENGINEERING
- SURVEYING
- PROJECT MANAGEMENT
- EARTH SCIENCE
- PLANNING
- ENVIRONMENTAL

3335 Arctic Blvd, Suite 100
 Anchorage, AK 99503
 (907) 564-2120 www.HDLalaska.com

STATE OF ALASKA
 49th
 DENNIS R. LINNELL
 No. CE 7649
 REGISTERED PROFESSIONAL ENGINEER

MUNICIPALITY OF ANCHORAGE

PUBLIC WORKS DEPARTMENT
 PROJECT MANAGEMENT AND ENGINEERING

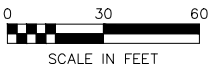
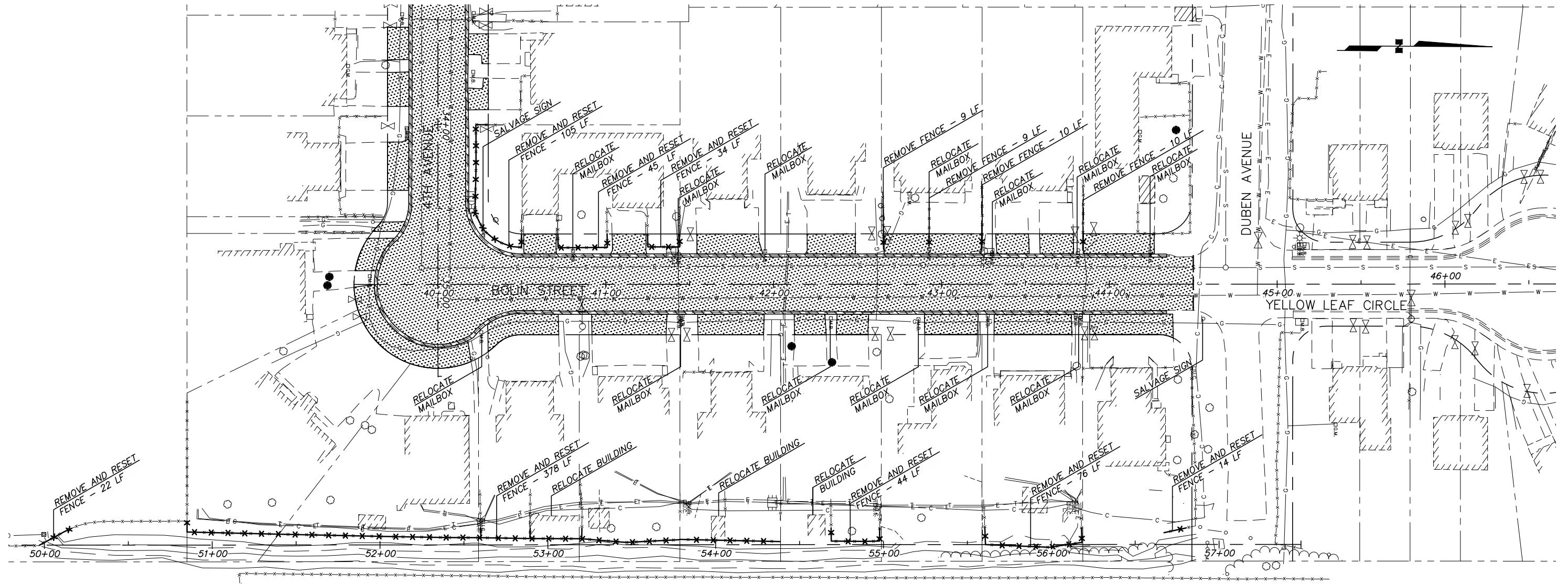
12-74 BOLIN STREET STORM DRAIN UPGRADE SCH A

DEMOLITION PLAN
 CHERRY STREET/4TH AVENUE

SCALE: HOR. 1"=30' DATE: 2014 GRIDS: SW1241 SHEET 8 of 20
 VER. 1"=NTS ACCT. NO.

FILE NO. -

H:\Jobs\12-012 MOA Civil Engineering Term Agreement\09-Spring Acres Sudv. Road and Drainage Improvements\03-Design\CAD\Drawings\12012-09-08-09-demo, 1=20, 02/17/14 at 15:32 by CDB
 LAYOUT: DEMO-09
 VIEW: SH105_H_X7700_PDF, SH108_H_X7700_PDF, SH109_H_X7700_PDF, SH105_H_X7700_PDF, SH108_H_X7700_PDF, SH109_H_X7700_PDF
 XREF: 12012-09-BASE, 12012-09-ROW, 12012-09-X01, 12012-09-BD01

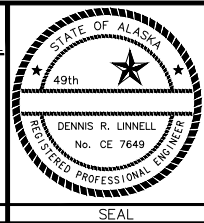


FIELD BOOKS	BM NO.	LOCATION	ELEV.	DATA	DRAWN BY	CHECKED BY	DATA	DRAWN BY	CHECKED BY	REV	DATE	DESCRIPTION	BY	REV	DATE	DESCRIPTION	BY
DESIGN: HDL 12-005 MOA	NAME		ELEV.	BASE			TELEPHONE										
STAKING:				TOPOGRAPHY			ELECTRIC										
ASBUILT:				PROFILE			CABLE TV										
CONTRACTOR:				SANITARY SEWER			DESIGN										
INSPECTOR:				STORM SEWER			QUANTITIES										
				WATER			MUN. FINAL CHECK										
				GAS													
CONSTRUCTION RECORD																	
	VERTICAL DATUM						PLAN CHECK										

HDL
HATTENBURG DILLEY & LINNELL
 Engineering Consultants

- ENGINEERING
- SURVEYING
- PROJECT MANAGEMENT
- EARTH SCIENCE
- PLANNING
- ENVIRONMENTAL

3335 Arctic Blvd, Suite 100
 Anchorage, AK 99503
 (907) 564-2120 www.HDLalaska.com



PUBLIC WORKS DEPARTMENT
PROJECT MANAGEMENT AND ENGINEERING

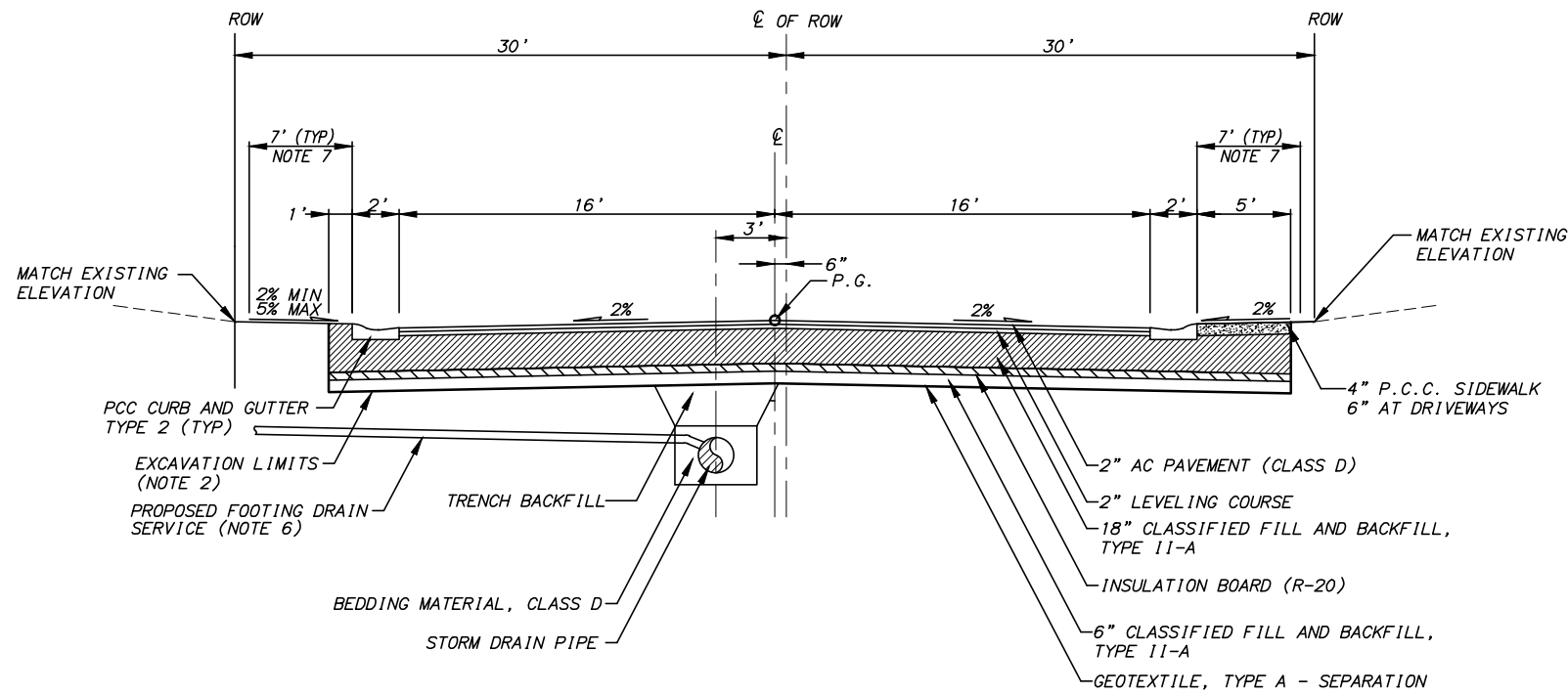
12-74 BOLIN STREET STORM DRAIN UPGRADE SCH A

DEMOLITION PLAN
BOLIN STREET

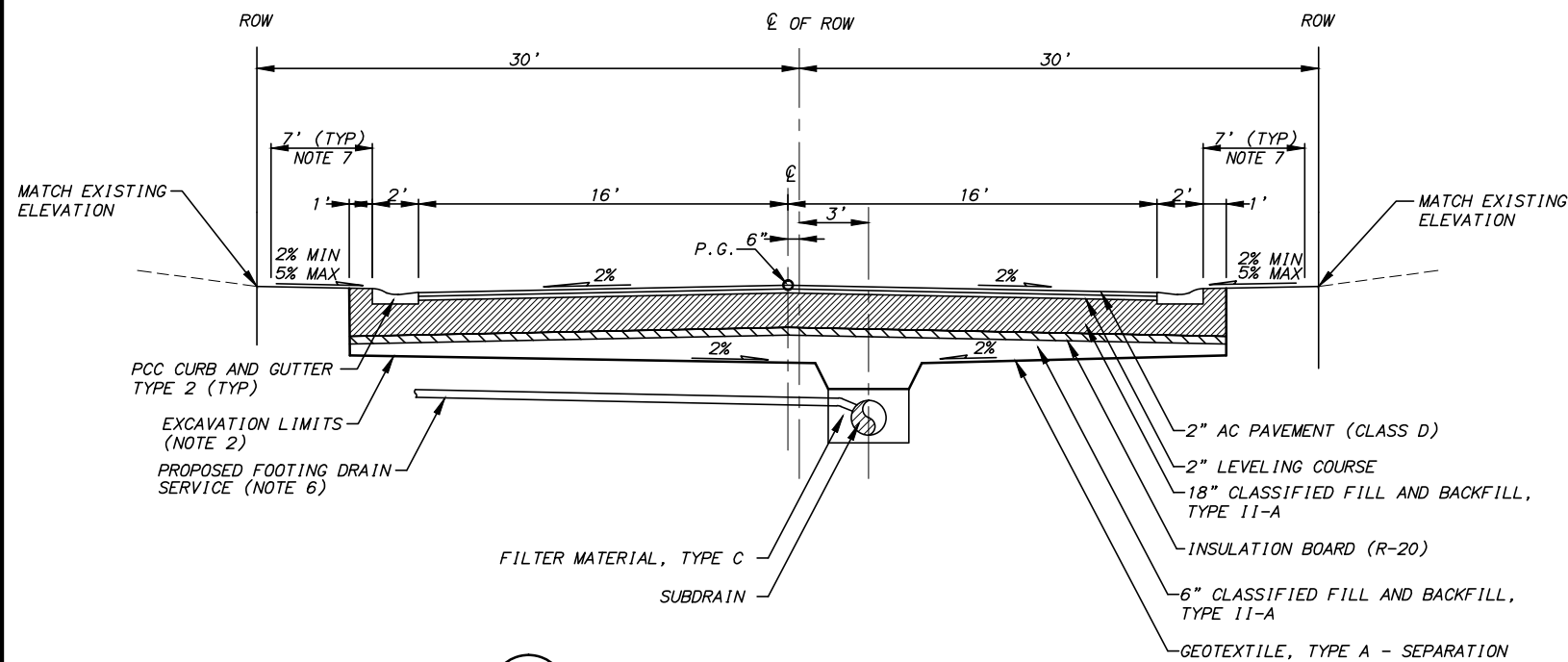
SCALE: HOR. 1"=30' DATE: 2014 GRIDS: SW1241 SHEET 9 of 20
 VER. 1"=NTS ACCT. NO.

FILE NO. -

H:\Jobs\12-012 MOA CIVIL Engineering Term Agreement\09-Spring Acres Subv. Road and Drainage Improvements\03-Design\Drawings\12012-09_10-11_TYPICAL_1=4_02/17/14 at 15:36 by CDB
 LAYOUT: DETAILS
 VIEW: SH110_HLPPF_SHT10_HLX7700
 XREF: 12012-09_B001



1 TYPICAL SECTION: CHERRY STREET



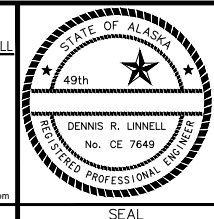
2 TYPICAL SECTION: 4TH AVENUE

STREET SECTION NOTES:

1. MAINTAIN MAXIMUM FILL SLOPE OF 2:1, MAXIMUM CUT SLOPE OF 1.5:1 OR AS DIRECTED BY THE ENGINEER.
2. EXCAVATION LIMITS/SECTION DEPTH MAY BE ADJUSTED IN THE FIELD BY THE ENGINEER AS REQUIRED BY VARYING SOIL CONDITIONS.
3. SLOPE TRENCH WALLS ACCORDING TO SOIL CONDITIONS AND O.S.H.A. SAFETY STANDARDS.
4. ALL SLOPES ARE IN REFERENCE TO THE HORIZONTAL.
5. EXCAVATION LIMITS SHALL EXTEND 1' BEYOND THE BACK OF PROPOSED CURB, OR AS DIRECTED BY THE ENGINEER.
6. ~~6~~ 6" CPEP (TYPE SP) FOOTING DRAIN SERVICE TO PROPERTY LINE WITH END CAP AND MARKER POST I.A.W. M.A.S.S. DETAIL 55-26. INSTALL WHERE SHOWN ON DRAINAGE UPGRADE SHEETS, OR AS DIRECTED BY THE ENGINEER. PAYMENT FOR FOOTING DRAIN SERVICE INSTALLATION IS PURSUANT TO M.A.S.S. SECTION 55.18.
7. MOA STREET MAINTENANCE REQUIRES SEVEN FEET OF CLEAR SPACE BEHIND BACK OF CURB. EXCEPTING MAIL BOXES AND ELECTROLIERS, NO PERMANENT OBSTRUCTIONS SHALL BE PLACED/RESET WITHIN THIS AREA.
8. DEPTH OF SUBGRADE IN THE CUL-DE-SAC EYEBROW SHALL BE A MINIMUM OF 32" AT EDGE. SLOPE BASE OF EXCAVATION AT 2% TOWARD THE SUBDRAIN.

FIELD BOOKS	BM NO.	LOCATION	ELEV.	DATA	DRAWN BY	CHECKED BY	DATA	DRAWN BY	CHECKED BY	REV	DATE	DESCRIPTION	BY	REV	DATE	DESCRIPTION	BY
DESIGN: HDL 12-005 MOA	NAME	-	ELEV.	BASE	-	-	TELEPHONE	-	-								
STAKING:				TOPOGRAPHY	-	-	ELECTRIC	-	-								
ASBUILT:				PROFILE	-	-	CABLE TV	-	-								
CONTRACTOR:	BASIS OF DATUM:	-		SANITARY SEWER	-	-	DESIGN	-	-								
INSPECTOR:				STORM SEWER	-	-	QUANTITIES	-	-								
				WATER	-	-	MUN. FINAL CHECK	-	-								
				GAS	-	-		-	-								
CONSTRUCTION RECORD	VERTICAL DATUM			PLAN CHECK													

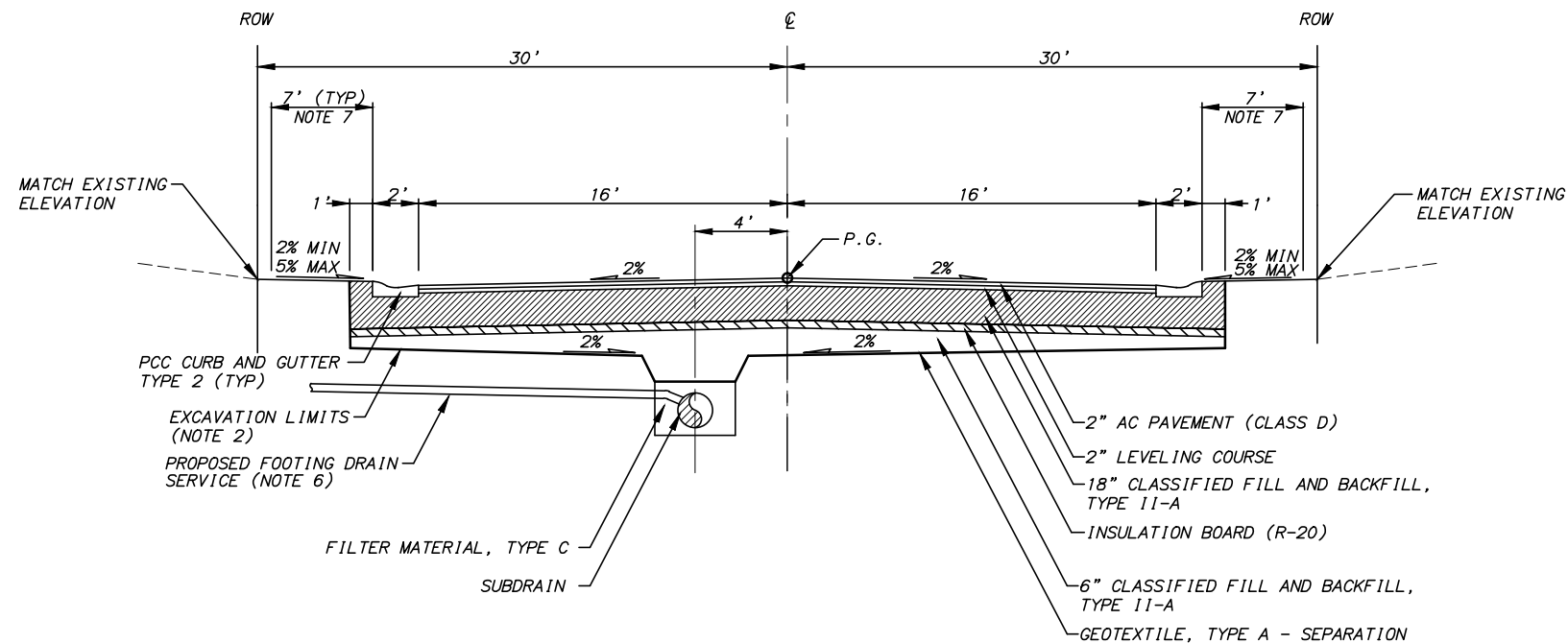
HDL
HATTENBURG DILLEY & LINNELL
 Engineering Consultants
 • ENGINEERING
 • SURVEYING
 • PROJECT MANAGEMENT
 • EARTH SCIENCE
 • PLANNING
 • ENVIRONMENTAL
 3335 Arctic Blvd, Suite 100
 Anchorage, AK 99503
 (907) 564-2120 www.HDLalaska.com



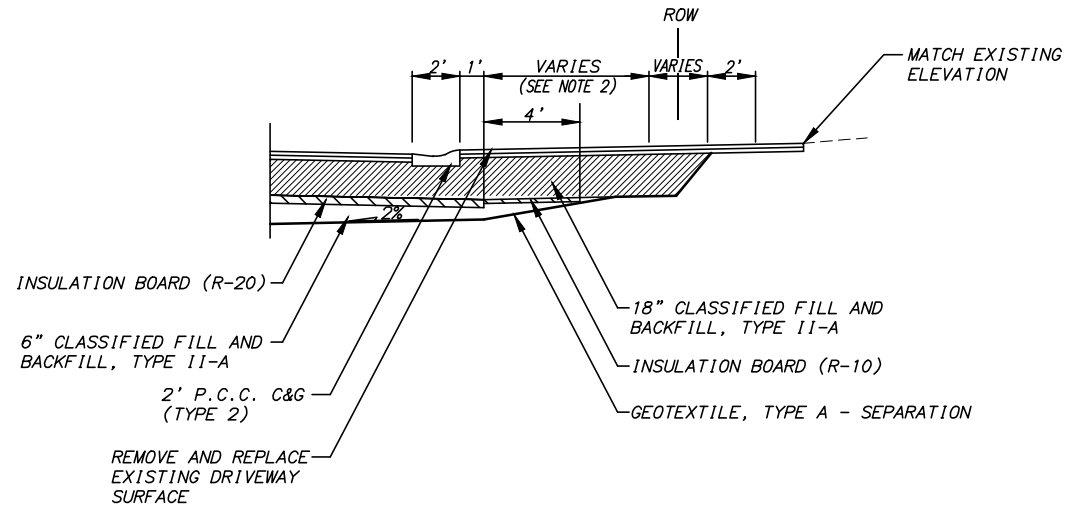
PUBLIC WORKS DEPARTMENT
PROJECT MANAGEMENT AND ENGINEERING
 12-74 BOLIN STREET STORM DRAIN UPGRADE SCH A,B
TYPICAL SECTIONS
 SCALE: HOR. 1"=4' DATE: 2014 GRIDS: SW1241 SHEET 10 of 20
 VER. 1"=4' ACCT. NO.

FILE NO.-

H:\Jobs\12-012 MOA CIVIL Engineering Term Agreement\09-Spring Acres Sudv. Road and Drainage Improvements\03-Design\Drawings\12012-09-10-11_TYPICAL_1=4_02/17/14 at 15:36 by CDB
 LAYOUT: DETAILS
 VIEW: SH11_HLPPF_SHT11_HLX7700
 XREF: 12012-09-B001



3 TYPICAL SECTION: BOLIN STREET



4 TYPICAL SECTION: DRIVEWAY RECONSTRUCTION

DRIVEWAY SECTION NOTES:

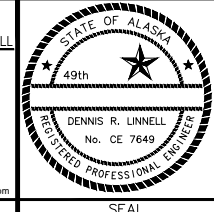
- EXCAVATION LIMITS/SECTION DEPTH MAY BE ADJUSTED IN THE FIELD BY THE ENGINEER AS REQUIRED BY VARYING SOIL CONDITIONS.
- LIMITS OF PAYMENT FOR "RECONSTRUCT DRIVEWAY" SHALL EXTEND A MINIMUM DISTANCE BEYOND BACK OF CURB AS REQUIRED TO ACCOMMODATE 4' OF TRANSITION INSULATION BOARD (R-10) AND TO TIE INTO EXISTING DRIVEWAY WITHOUT EXCEEDING AN ALGEBRAIC DIFFERENCE IN GRADE OF 6% OR AS DIRECTED BY THE ENGINEER. SLOPE OF EXCAVATION FOR DRIVEWAY RECONSTRUCTION MAY VARY BUT SHALL NOT EXCEED 1:1.

FIELD BOOKS	BM NO.	LOCATION	ELEV.	DATA	DRAWN BY	CHECKED BY	DATA	DRAWN BY	CHECKED BY	REV	DATE	DESCRIPTION	BY	REV	DATE	DESCRIPTION	BY
DESIGN: HDL 12-005 MOA	NAME	-	ELEV	BASE	-	-	TELEPHONE	-	-								
STAKING:				TOPOGRAPHY	-	-	ELECTRIC	-	-								
ASBUILT:				PROFILE	-	-	CABLE TV	-	-								
				SANITARY SEWER	-	-	DESIGN	-	-								
				STORM SEWER	-	-	QUANTITIES	-	-								
				WATER	-	-	MUN. FINAL CHECK	-	-								
				GAS	-	-		-	-								
CONTRACTOR:	BASIS OF DATUM:																
INSPECTOR:																	
CONSTRUCTION RECORD	VERTICAL DATUM			PLAN CHECK				REVISIONS				SEAL					

HDL
HATTENBURG DILLEY & LINNELL
 Engineering Consultants

- ENGINEERING
- SURVEYING
- PROJECT MANAGEMENT
- EARTH SCIENCE
- PLANNING
- ENVIRONMENTAL

3335 Arctic Blvd, Suite 100
 Anchorage, AK 99503
 (907) 564-2120 www.HDLalaska.com



PUBLIC WORKS DEPARTMENT
PROJECT MANAGEMENT AND ENGINEERING

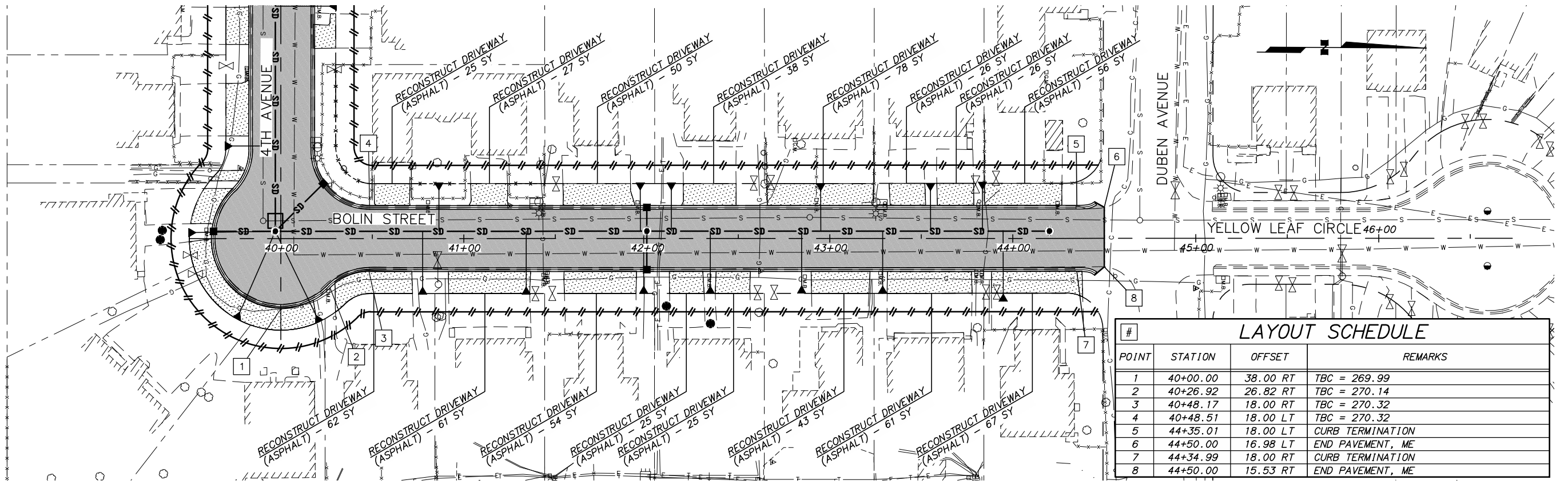
12-74 BOLIN STREET STORM DRAIN UPGRADE SCH A,B

TYPICAL SECTIONS

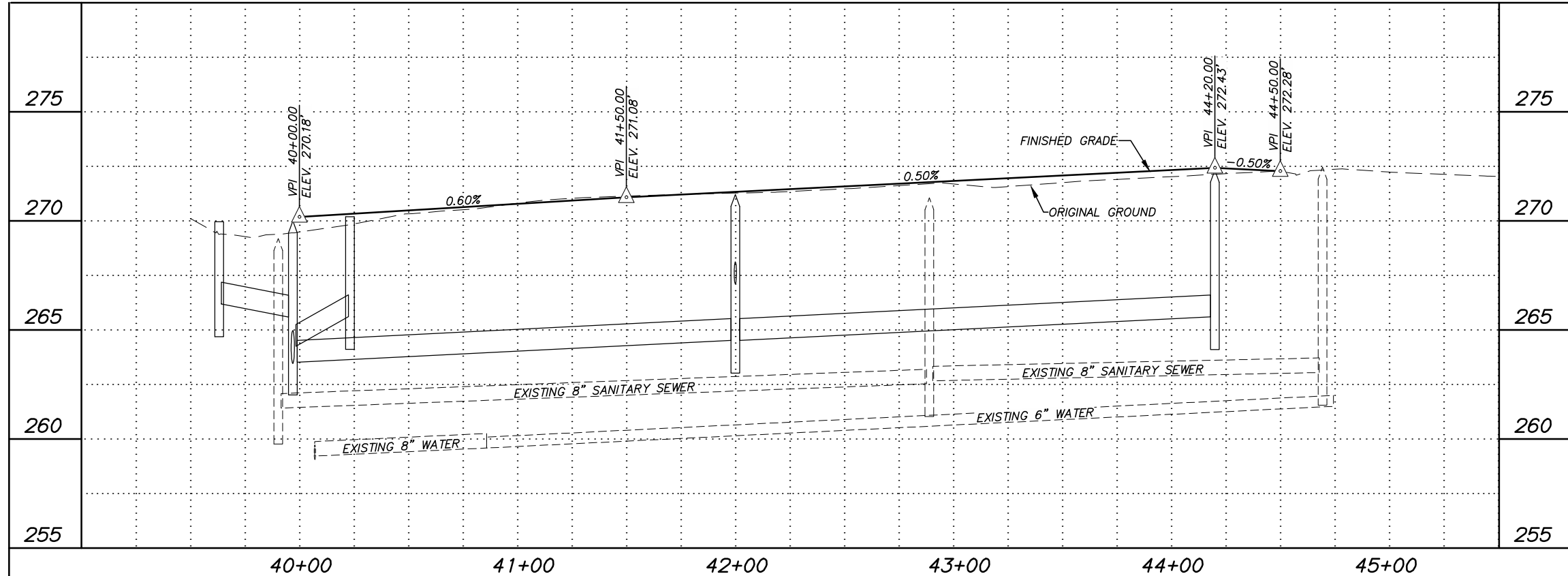
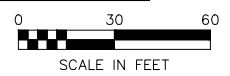
SCALE: HOR. 1"=4' DATE: 2014 GRIDS: SW1241 SHEET 11 of 20
 VER. 1"=4' ACCT. NO.

FILE NO. -

H:\Jobs\12-012 MOA Civil Engineering Term Agreement\09-Spring Acres Sudw. Road and Drainage Improvements\03-Design\CAD\Drawings\12012-09-12-14-PLAN_1=30_02/17/14 at 15:38 by CDB
 LAYOUT: PLAN & PROFILE - BOLIN
 VIEW: SH113_H_PDF_SHT113_H_X7700_SHT113_H_PDF_SHT113_H_X7700_SHT113_H_PDF_SHT113_H_X7700
 XREF: 12012-09-BASE, 12012-09-ROW, 12012-09-X01, 12012-09-BD01

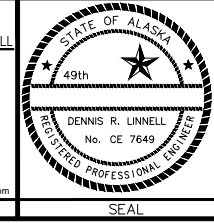


LAYOUT SCHEDULE				
#	POINT	STATION	OFFSET	REMARKS
1	40+00.00	38.00 RT	TBC = 269.99	
2	40+26.92	26.82 RT	TBC = 270.14	
3	40+48.17	18.00 RT	TBC = 270.32	
4	40+48.51	18.00 LT	TBC = 270.32	
5	44+35.01	18.00 LT	CURB TERMINATION	
6	44+50.00	16.98 LT	END PAVEMENT, ME	
7	44+34.99	18.00 RT	CURB TERMINATION	
8	44+50.00	15.53 RT	END PAVEMENT, ME	



FIELD BOOKS	BM NO.	LOCATION	ELEV.	DATA	DRAWN BY	CHECKED BY	DATA	DRAWN BY	CHECKED BY	REV	DATE	DESCRIPTION	BY	REV	DATE	DESCRIPTION	BY
DESIGN: HDL 12-005 MOA	NAME		ELEV.	BASE			TELEPHONE										
STAKING:				TOPOGRAPHY			ELECTRIC										
ASBUILT:				PROFILE			CABLE TV										
CONTRACTOR:	BASIS OF DATUM:			SANITARY SEWER			DESIGN										
INSPECTOR:				STORM SEWER			QUANTITIES										
				WATER			MUN. FINAL CHECK										
				GAS													

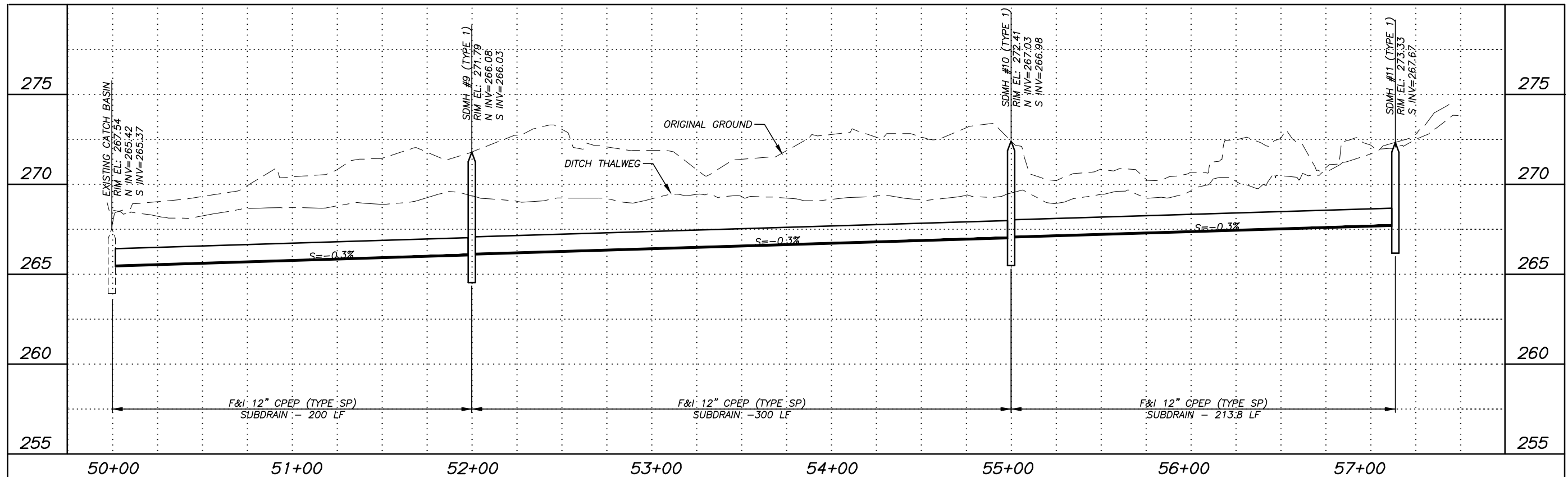
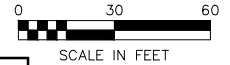
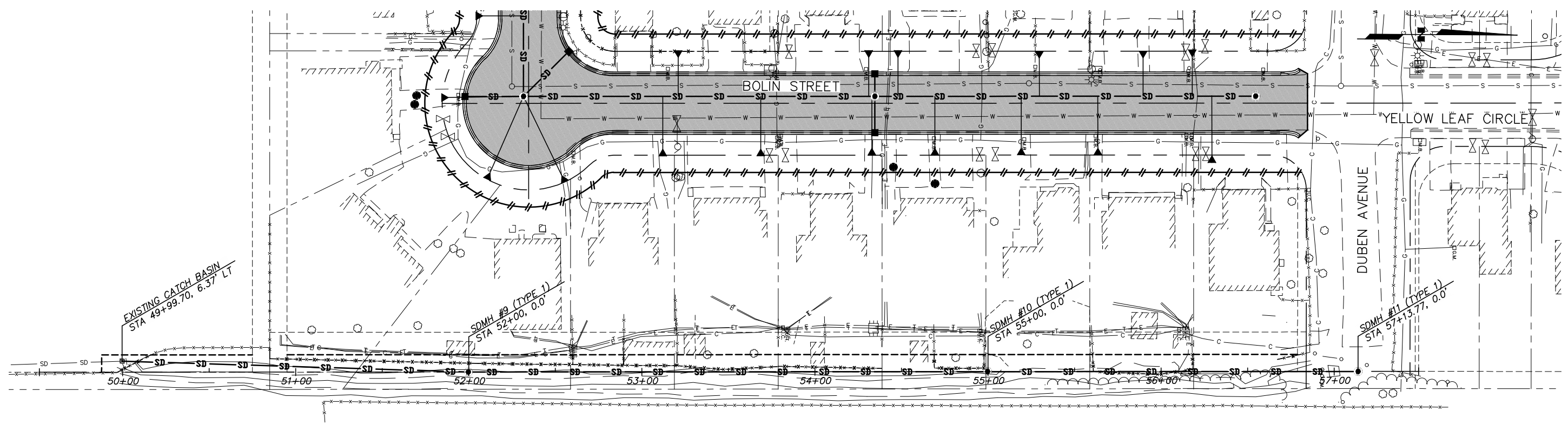
HDL
 HATTENBURG DILLEY & LINNELL
 Engineering Consultants
 • ENGINEERING
 • SURVEYING
 • PROJECT MANAGEMENT
 • EARTH SCIENCE
 • PLANNING
 • ENVIRONMENTAL
 3335 Arctic Blvd, Suite 100
 Anchorage, AK 99503
 (907) 564-2120 www.HDLalaska.com



PUBLIC WORKS DEPARTMENT
 PROJECT MANAGEMENT AND ENGINEERING
 12-74 BOLIN STREET STORM DRAIN UPGRADE SCH A
PAVING UPGRADES
BOLIN STREET
 SCALE: HOR. 1"=30' DATE: 2014 GRIDS: SW1241 SHEET 14 of 20
 VER. 1"=3' ACCT. NO.

FILE NO. -

H:\jobs\12-012 MOA Civil Engineering Term Agreement\09-Spring Acres Sudv. Road and Drainage Improvements\03-Design\CAD\Drawings\12012-09-18-DITCH, 1=30, 02/17/14 at 16:00 by CDB
 LAYOUT: SD - DITCH
 VIEW: SH117_PDF, SH117_H_X7700
 XREF: 12012-09-BASE, 12012-09-ROW, 12012-09-X01, 12012-09-SD01

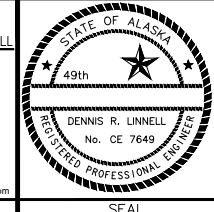


FIELD BOOKS	BM NO.	LOCATION	ELEV.	DATA	DRAWN BY	CHECKED BY	DATA	DRAWN BY	CHECKED BY	REV	DATE	DESCRIPTION	BY	REV	DATE	DESCRIPTION	BY
DESIGN: HDL 12-005 MOA	NAME	-	ELEV.	BASE	-	-	TELEPHONE	-	-								
STAKING:				TOPOGRAPHY	-	-	ELECTRIC	-	-								
ASBUILT:				PROFILE	-	-	CABLE TV	-	-								
CONTRACTOR:				SANITARY SEWER	-	-	DESIGN	-	-								
INSPECTOR:				STORM SEWER	-	-	QUANTITIES	-	-								
				WATER	-	-	MUN. FINAL CHECK	-	-								
				GAS	-	-		-	-								

HDL
HATTENBURG DILLEY & LINNELL
 Engineering Consultants

- ENGINEERING
- SURVEYING
- PROJECT MANAGEMENT
- EARTH SCIENCE
- PLANNING
- ENVIRONMENTAL

3335 Arctic Blvd, Suite 100
 Anchorage, AK 99503
 (907) 564-2120 www.HDLalaska.com



PUBLIC WORKS DEPARTMENT
PROJECT MANAGEMENT AND ENGINEERING

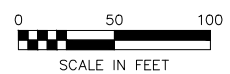
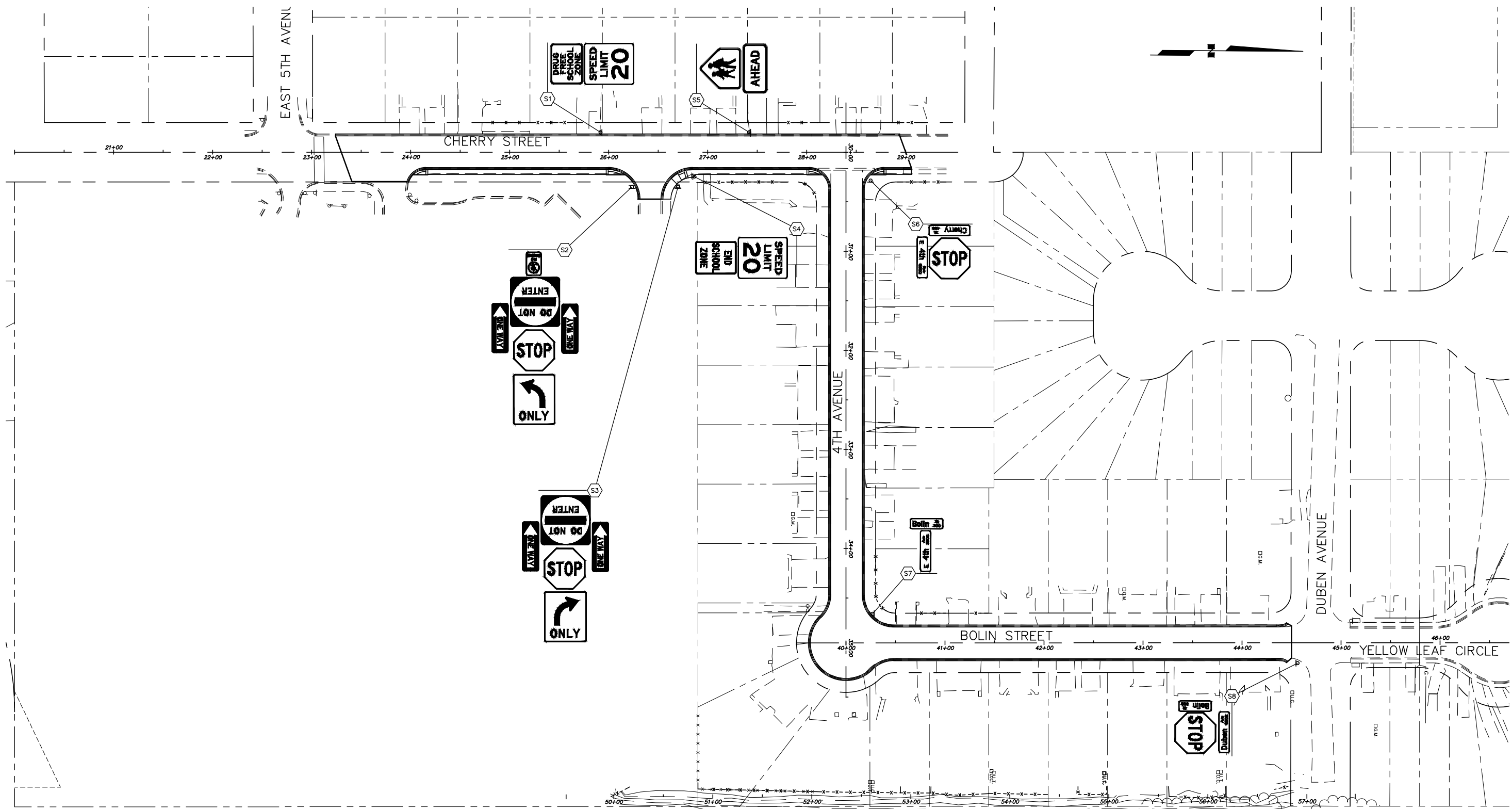
12-74 BOLIN STREET STORM DRAIN UPGRADE SCH C

DITCH UPGRADES

SCALE: HOR. 1"=30' DATE: 2014 GRIDS: SW1241 SHEET 18 of 20
 VER. 1"=3' ACCT. NO.

FILE NO. -

H:\jobs\12-012 MOA Civil Engineering Term Agreement\09-Spring Acres Sudw. Road and Drainage Improvements\03-Design\CAD\Drawings\12012-09-SIGN, 1=30, 02/17/14 at 16:02 by CDB
 LAYOUT: CHERRY
 VIEW: SH119_H_X7700, SH119_H_X7700, SH119_H_X7700, SH119_H_X7700, SH119_H_X7700, SH119_H_X7700, SH119_H_X7700, SH119_H_X7700, SH119_H_X7700, SH119_H_X7700
 XREF: 12012-09-BASE, 12012-09-ROW, 12012-09-XOI, 12012-09-BD01



FIELD BOOKS	BM NO.	LOCATION	ELEV.	DATA	DRAWN BY	CHECKED BY	DATA	DRAWN BY	CHECKED BY	REV	DATE	DESCRIPTION	BY	REV	DATE	DESCRIPTION	BY		
DESIGN: HDL 12-005 MOA	NAME		ELEV.	BASE			TELEPHONE												
STAKING:				TOPOGRAPHY			ELECTRIC												
ASBUILT:				PROFILE			CABLE TV												
CONTRACTOR:				SANITARY SEWER			DESIGN												
INSPECTOR:				STORM SEWER			QUANTITIES												
				WATER			MUN. FINAL CHECK												
				GAS															
BASIS OF DATUM:																			
CONSTRUCTION RECORD				VERTICAL DATUM				PLAN CHECK				REVISIONS				SEAL			

HDL
HATTENBURG DILLEY & LINNELL
 Engineering Consultants
 • ENGINEERING
 • SURVEYING
 • PROJECT MANAGEMENT
 • EARTH SCIENCE
 • PLANNING
 • ENVIRONMENTAL
 3335 Arctic Blvd, Suite 100
 Anchorage, AK 99503
 (907) 564-2120 www.HDLalaska.com

STATE OF ALASKA
 49th
 DENNIS R. LINNELL
 No. CE 7649
 REGISTERED PROFESSIONAL ENGINEER

MUNICIPALITY OF ANCHORAGE

PUBLIC WORKS DEPARTMENT
 PROJECT MANAGEMENT AND ENGINEERING
 12-74 BOLIN STREET STORM DRAIN UPGRADE SCH A
SIGNING PLAN
 SCALE: HOR. 1"=50' DATE: 2014 GRIDS: SW1241 SHEET 19 of 20
 VER. 1"=N/A ACCT. NO.

FILE NO.-

H:\Jobs\12-012 MOA Civil Engineering Term Agreement\09-Spring Acres Sudv. Road and Drainage Improvements\03-Design\CAD\Drawings\12012-09-19-20-SIGN, 1=30, 02/17/14 at 16:02 by CDB
 LAYOUT: 4TH AVE
 VIEW: SH119_H_X7700, SH119_H_X7700, SH119_H_X7700, SH119_H_X7700, SH119_H_X7700, SH119_H_X7700, SH119_H_X7700, SH119_H_X7700, SH119_H_X7700, SH119_H_X7700
 XREF: 12012-09-BASE, 12012-09-ROW, 12012-09-XOI, 12012-09-BD01

SIGN SUMMARY												
SHEET NO.	POST NO.	STATION	OFFSET	TYPE	LEGEND	SIZE (IN x IN)	AREA FT ²	SIGN FACES	POST SIZE (IN)	THICKNESS (IN)		REMARKS
										FRAMED	UNFRAMED	
20	S1	25+91.74	LT	S6-1		24x12	2.00	N	2.5" PT		0.125	
				R2-1-20		24x30	5.00	N	2.5" PT		0.125	
20	S2	26+23.60	RT	R6-1R		36x12	3.00	N	2.5" PT		0.125	
				R6-1L		36x12	3.00	S	2.5" PT		0.125	
				R5-1		30x30	6.25	W	2.5" PT		0.125	
						12x18	1.5	W	2.5" PT		0.125	
				R1-1		30x30	6.25	E	2.5" PT		0.125	
				R3-5L		24x30	5.00	E	2.5" PT		0.125	
20	S3	26+70.00	RT	R6-1R		36x12	3.00	N	2.5" PT		0.125	
				R6-1L		36x12	3.00	S	2.5" PT		0.125	
				R5-1		30x30	6.25	W	2.5" PT		0.125	
				R1-1		30x30	6.25	E	2.5" PT		0.125	
				R3-5R		24x30	5.00	E	2.5" PT		0.125	
20	S4	26+86.54	RT	R2-1-20		24x30	5.00	S	2.5" PT		0.125	
				S5-2		18x24	2.00	S	2.5" PT		0.125	

SIGN SUMMARY												
SHEET NO.	POST NO.	STATION	OFFSET	TYPE	LEGEND	SIZE (IN x IN)	AREA FT ²	SIGN FACES	POST SIZE (IN)	THICKNESS (IN)		REMARKS
										FRAMED	UNFRAMED	
20	S5	27+41.81	LT	S1-1		30x30	6.25	N	2.5" PT		0.125	
				W16-9P		24x12	2.00	N	2.5" PT		0.125	
20	S6	28+64.50	RT	D3-1D		(2)30x8	1.67	E/W	2.5" PT		0.125	
				D3-1D		(2)30x8	1.67	N/S	2.5" PT		0.125	
				R1-1		30x30	6.25	E	2.5" PT		0.125	
20	S7	40+26.88	LT	D3-1D		(2)24x8	1.33	N/S	2.5" PT		0.125	
				D3-1D		(2)30x8	1.67	E/W	2.5" PT		0.125	
20	S8	44+56.02	RT	D3-1D		(2)24x8	1.33	E/W	2.5" PT		0.125	
				D3-1D		(2)30x8	1.67	N/S	2.5" PT		0.125	
				R1-1		30x30	6.25	E	2.5" PT		0.125	

SALVAGE SIGN SUMMARY			
SHEET NO.	STATION	OFFSET	REMARKS
20	25+91.74	LT	DRUG FREE SCHOOL ZONE, SPEED LIMIT 20
20	26+23.60	RT	ONE WAY (2), DO NOT ENTER, NO SKATEBOARDS, STOP, LEFT TURN ONLY
20	26+70.00	RT	ONE WAY (2), DO NOT ENTER, STOP, RIGHT TURN ONLY
20	26+86.54	RT	END SCHOOL ZONE, SPEED LIMIT 20
20	27+41.81	LT	AHEAD, SCHOOL ZONE
20	28+09.37	RT	CHERRY ST (2), 4TH AVE (2)
20	28+64.50	RT	STOP
20	40+26.88	LT	4TH AVE (2), BOLIN ST (2)
20	44+56.02	RT	STOP

NOTE

- THE LETTERING FOR NAMES OF STREETS ON STREET NAME SIGNS SHALL BE COMPOSED OF A COMBINATION OF LOWER-CASE LETTERS WITH INITIAL UPPER-CASE LETTERS I.A.W. M.U.T.C.D. SECTION 2D.43

FIELD BOOKS	BM NO.	LOCATION	ELEV.	DATA	DRAWN BY	CHECKED BY	DATA	DRAWN BY	CHECKED BY	REV	DATE	DESCRIPTION	BY	REV	DATE	DESCRIPTION	BY
DESIGN: HDL 12-005 MOA	NAME	-	ELEV.	BASE	-	-	TELEPHONE	-	-								
STAKING:				TOPOGRAPHY	-	-	ELECTRIC	-	-								
ASBUILT:				PROFILE	-	-	CABLE TV	-	-								
CONTRACTOR:				SANITARY SEWER	-	-	DESIGN	-	-								
INSPECTOR:				STORM SEWER	-	-	QUANTITIES	-	-								
				WATER	-	-	MUN. FINAL CHECK	-	-								
				GAS	-	-		-	-								

HDL
 HATTENBURG DILLEY & LINNELL
 Engineering Consultants
 • ENGINEERING
 • SURVEYING
 • PROJECT MANAGEMENT
 • EARTH SCIENCE
 • PLANNING
 • ENVIRONMENTAL
 3335 Arctic Blvd, Suite 100
 Anchorage, AK 99503
 (907) 564-2120 www.HDLalaska.com

STATE OF ALASKA
 49th
 DENNIS R. LINNELL
 No. CE 7649
 REGISTERED PROFESSIONAL ENGINEER

MUNICIPALITY OF ANCHORAGE

PUBLIC WORKS DEPARTMENT
 PROJECT MANAGEMENT AND ENGINEERING
 12-74 BOLIN STREET STORM DRAIN UPGRADE SCH A
SIGNING PLAN
 SCALE: HOR. 1"=N/A DATE: 2014 GRIDS: SW1241 SHEET 20 of 20
 VER. 1"=N/A ACCT. NO.

FILE NO.-