

**Agency: Commerce, Community and Economic Development**

**Grants to Named Recipients (AS 37.05.316)**

**Grant Recipient: Senior Citizens of Kodiak, Inc.**

**Federal Tax ID: 23-7348249**

**Project Title:**

**Project Type: Maintenance and Repairs**

# Senior Citizens of Kodiak, Inc. - Adult Day Patio and Kitchen Lighting Replacement

**State Funding Requested: \$26,220**

**House District: 35 / R**

One-Time Need

**Brief Project Description:**

Install outside patio walking area for adult day participants and replace original lighting in kitchen

**Funding Plan:**

Total Project Cost:	\$26,220
Funding Already Secured:	(\$0)
FY2015 State Funding Request:	<u>(\$26,220)</u>
Project Deficit:	\$0

*Funding Details:*

*Senior Citizens of Kodiak, Inc. has received numerous capital grants from the State of Alaska as well as Rasmuson Foundation, Alaska Mental Health Trust, Department of Health & Social Services and Department of Transportation for previous capital projects.*

**Detailed Project Description and Justification:**

- Replace original lighting at Kodiak Senior Center: \$ 7,770
- Install concrete patio for adult day participants: \$18,450

Island Cove Adult Day, a SCOK program, has been operating since 1991 serving those seniors with dementia, Alzheimer's disease, those recovering from a stroke or those who live alone and need daily monitoring. Island Cove is nationally accredited and the only adult day program in Alaska which is open seven days a week. This patio would be used by the adult day participants in providing an outside fenced in walking area and an area where they could garden and have other outdoor activities. Having this outdoor safe space for participants would enhance their daily social and activity schedule and provide much needed fresh air and sun, when available. This project calls for removing gravel, repairing the original fence from 1985 and pouring 750 square feet of concrete.

The kitchen lights at the senior center are original (from 1985) and are in disrepair with many not having proper light covers, some broken covers and are not energy efficient. These 25 original light fixture covers cannot be replaced as they are no longer made. In order to meet kitchen codes, and have appropriate lighting in the kitchen, these lights need to be replaced with energy efficient ones which meet codes. Senior Citizens of Kodiak, Inc. serves more than 20,000 meals a year and all are prepared in the senior center kitchen. Meals are delivered seven days a week and congregate meals are served five days a week. In order to have clean, safe working environment, these 25 lights from 1985 need to be replaced.

*For use by Co-chair Staff Only:*

\$26,500  
Approved

**Project Timeline:**

Replacements for kitchen lighting would occur as soon as possible since the lighting is from 1985. Walking area would be completed during the summer 2014 when the weather is conducive for concrete being poured and for adult day participants to also enjoy.

**Entity Responsible for the Ongoing Operation and Maintenance of this Project:**

Senior Citizens of Kodiak, Inc.

**Grant Recipient Contact Information:**

Name: Patricia Branson  
Title: Executive Director  
Address: 302 Erskine  
Kodiak, Alaska 99615  
Phone Number: (907)486-6181  
Email: scokinc@ak.net

Has this project been through a public review process at the local level and is it a community priority?  Yes  No

*For use by Co-chair Staff Only:*

11:57 AM 5/13/2014













## SENIOR CITIZENS OF KODIAK, INC.

302 Erskine Avenue, Kodiak, AK 99615

Phone: (907) 486-6181

Fax: (907) 486-4503

E-mail: scokinc@ak.net

December 19, 2013

To: Senator Gary Stevens and Representative Alan Austerman  
From: Senior Citizens of Kodiak Inc. Board of Directors

We are requesting two items be funded with the Legislative Capital grant for FY15 and will complete the CAPSIS application for these projects:

1. Expand the lower level patio in front of Island Cove Adult Day program so participants have room to walk and garden. This project includes removing gravel in the lower area near the solarium, repairing the fence and adding more space to walk outside and garden.  
The cost for this project is \$18,450

2. Replace the original lighting in the kitchen and one office. The original lighting from 1985 is in disrepair with covers not being able to be replaced and the older lighting not being energy efficient. Replacing the 25 light fixtures with fully enclosed industrial lights and covers and completing the dust control and touch up painting is \$7,770.

The total capital request from SCOK is: \$26,220.

Thank you for your consideration.



**KEN KNOWLES**  
Lightfoot Construction  
P.O. Box 1934  
KODIAK, ALASKA 99615  
(907) 486-6229  
Fax (907) 486-6288

JOB \_\_\_\_\_  
SHEET NO. \_\_\_\_\_ OF \_\_\_\_\_  
CALCULATED BY \_\_\_\_\_ DATE \_\_\_\_\_  
CHECKED BY \_\_\_\_\_ DATE \_\_\_\_\_  
SCALE \_\_\_\_\_

10/12/13

SENIOR CITIZENS OF KODIAK INC  
302 ERSKINE AVE  
KODIAK

"BALL PARK" ESTIMATE

REMOVE GRAVEL IN LOWER GARDEN AREA  
NEAR SOLARIUM; REPAIR FENCE AND ADD  
CONCRETE PATIO TO APPROX. 750 SQUARE FEET

LABOR TO REMOVE GRAVEL, FENCE;  
PREP FOR CONCRETE

70 MAN HOURS @ \$75/HR . . . . . \$5250.-  
EQUIPMENT RENTAL . . . . . \$1500.-  
(COMPACTOR, BORCAT)

APPROX. 12 YDS OF CONCRETE  
\$850/YD IN PLACE \$10200.-  
REPAIR/REPLACE FENCE SECTION 1500.-

BALL PARK . . . . \$18450.-

LEAVE EXISTING SIDE WALKS, CONCRETE &  
FLOWER BOXES

# TRACT A-1

AREA OF PROJECT  
DRAINAGE

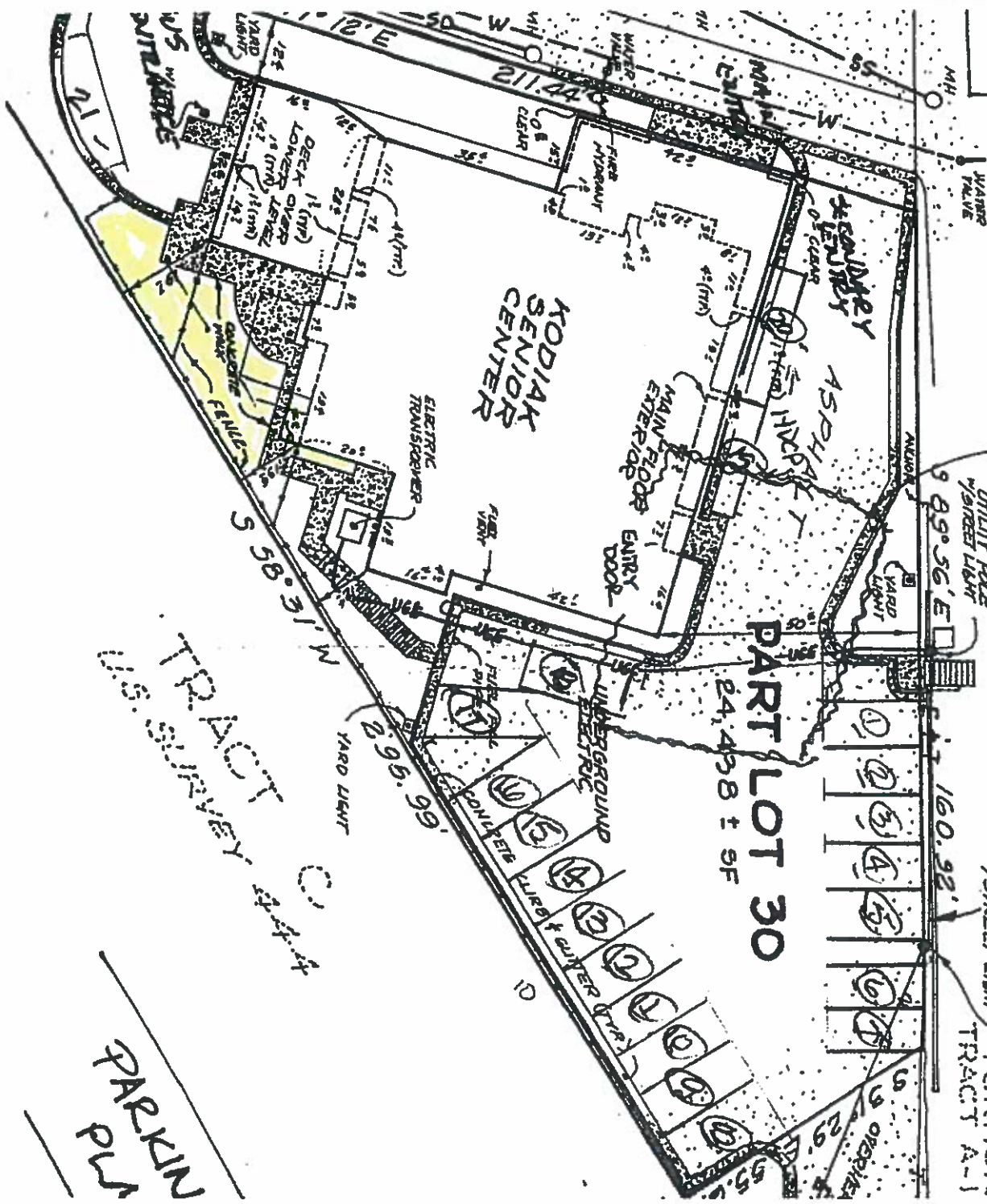
OVERHEAD ELEC, PHONE & TV

UTILITY POLE  
YARD LIGHT  
STREET LIGHT  
PORTION  
TRACT A-1

## PART LOT 30

24,438 ± SF

### KODIAK SENIOR CENTER



TRACT A-1

PARKIN



**Local  
Electric, Inc.**

1212 Madsen Avenue  
Kodiak, AK 99615  
locale@ak.net  
(907) 486-8499  
Fax: (907) 486-1773

## **Senior Center Kitchen and Storage Lighting**

Local Electric inc is to provide and install 25 new Light Fixtures in Kitchen and Storage Area. The existing lights have damaged or missing covers. We will repurpose any intact lenses in other areas within the Building. All work will be performed during hours convenient for the Kitchen Staff and Lightfoot Construction will handle the dust control and any touch-up painting. We have enclosed two lighting options; Labor cost will remain the same regardless of either lighting choose.

<b>Option 1: Style 96:</b>	<b>\$3,875.00</b>
<b>Option 2: Style EFS:</b>	<b>\$12,225.00</b>
<b>Labor:</b>	<b>\$1650.00</b>
<b>Baler disposal of existing lighting:</b>	<b>\$175.00</b>

  
Charlie Jerling  
Local Electric Inc

# FULLY ENCLOSED INDUSTRIAL

# 96

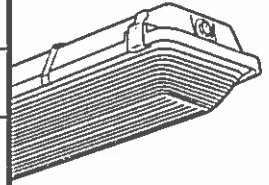
**SUBMITTAL:**

**T5 | T8**

**JOB:**

**TYPE:**

**VOLTAGE:**



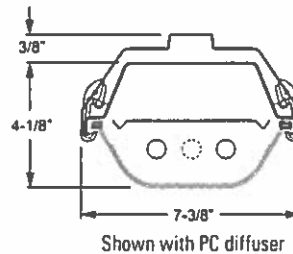
**EXAMPLE** → **96** - **4** - **2** **54T5H** - **PC** - **OPTIONS** - **EB2** - **UNV**

SERIES    NOMINAL LENGTH    TOTAL LAMPS    WATTAGE/TYPE    SHIELDING    OPTIONS/ACCESSORIES    BALLAST TYPE    VOLTAGE



## FEATURES

- ▶ Fully gasketed fixture resists dust, bugs, and moisture.
- ▶ Polycarbonate toggle latches (standard) ensure a tight seal and provide easy access to electrical components.
- ▶ Optional stainless steel, tamper-resistant stainless steel, or tamper-resistant polycarbonate latches available.
- ▶ Closed-cell polyurethane gasket poured and formed in place to ensure tight seal—does not absorb water or support fungal growth.
- ▶ NSF/ANSI Standard 2—Splash Zone certified.
- ▶ IP65 and IP67<sup>1</sup> certified.
- ▶ UL listed as fluorescent fixture suitable for wet locations when ordered with factory-installed watertight hubs, STOW cord, or mini-male receptacle option.<sup>2</sup>
- ▶ Can operate up to 40°C/104°F with high-ambient (HA/40C) option.<sup>3</sup>
- ▶ This fixture is proudly made in the USA.



## SPECIFICATIONS

**Enclosure** – Outer housing consists of 5VA (F1) fiberglass, rated for flame and weather resistance.

**Internal Housing** – 25-gauge die-formed C.R.S.

**Latching** – Injection-molded polycarbonate latches.

**Reflective Surfaces** – 92% minimum average reflective white polyester powder coat bonded to phosphate-free, multi-stage pretreated metal.

**Shielding** – Clear polycarbonate or acrylic UV stabilized diffuser.

**Electrical** – Electronic ballast standard, instant start T8, program start T5, rated Class P.

**Mounting** – Surface or suspended. Stainless steel ceiling mount bracket standard.

**Labels & Certifications** – UL/CUL listed as fluorescent luminaire suitable for dry or damp locations. UL/CUL listed as suitable for wet locations when specified with watertight hub, STOW cord, or mini-male receptacle option.<sup>2</sup> NSF/ANSI Standard 2—Splash Zone certified, IP65 and IP67<sup>1</sup> certified.

## ORDERING INFORMATION

SERIES	
96	Fully Enclosed Industrial

NOMINAL LENGTH			
4	4'	8	8'

TOTAL LAMPS	
1, 2, 3 <sup>4</sup> , 4, or 6 <sup>4</sup> (1-, 2-, or 3-lamp cross-section)	

LAMP WATTAGE/TYPE			
28T5S	4', 28-watt T5	54T5H <sup>4</sup>	4', 54-watt T5HO <sup>4</sup>
32	4', 32-watt T8	59	8', 59-watt T8

SHIELDING	
PC	Drop, clear, 100% polycarbonate diffuser (vacuum formed) (standard in 4' units, not available in 8' units)
HIA	Drop, high-impact injection-molded acrylic (standard in 8' units)
HIAFR	High-impact frosted acrylic
DCL	Drop, clear, 100% acrylic, impact-resistant diffuser with frosted ends (see back for details)
DFR	Drop, frosted, 100% acrylic, impact-resistant diffuser (see back for details)

OPTIONS/ACCESSORIES	
For generic EM ballast options (must specify voltage), see Fluorescent Information section. <sup>4</sup>	
3WC6	3-wire, 6' STOW cord
3WC20	3-wire, 20' STOW cord
4WC6	4-wire, 6' STOW cord
4WC20	4-wire, 20' STOW cord
3WMR	3-wire mini-male receptacle only
3WMRC6	3-wire mini-male receptacle with 6' STOW cord
3WMRC20	3-wire mini-male receptacle with 20' STOW cord
4WMR	4-wire mini-male receptacle only

OPTIONS/ACCESSORIES (Continued)	
4WMRC6	4-wire mini-male receptacle with 6' STOW cord
4WMRC20	4-wire mini-male receptacle with 20' STOW cord
WET/1	(1) 1/2" watertight hub (factory-installed in end of housing)
WET/2	(2) 1/2" watertight hubs (factory-installed in ends of housing, not available with occupancy sensor option)
SSCMB	Stainless steel chain mounting brackets (2 per fixture)
HA/40C <sup>3</sup>	High-ambient, 40°C max. operating temp. <sup>3</sup>
GMF <sup>5</sup>	Fuse, slow blow (specify voltage) <sup>6</sup>
GLR <sup>5</sup>	Fuse, fast blow (specify voltage) <sup>6</sup>
TP <sup>4</sup>	Tamper-resistant polycarbonate latches <sup>6</sup>
SS LATCH	Stainless steel latches
TP/SS LATCH <sup>4</sup>	Tamper-resistant stainless steel latches <sup>6</sup>
<b>OCCUPANCY SENSORS<sup>1</sup></b>	
Occupancy sensor must be specified from the following (specify voltage):	
OCCWS HB350W-L3W-120/277 <sup>1</sup>	
OCCWS HB350W-L4W-120/277 <sup>1</sup>	

BALLAST TYPE	
EB1	1-lamp electronic ballast
EB2	2-lamp electronic ballast
EB3	3-lamp electronic ballast
EB4	4-lamp electronic ballast
EB4/2	(1) 4-lamp and (1) 2-lamp electronic ballast

VOLTAGE			
120	120V	480	480V (T5HO only)
277	277V	HRV	347-480V
UNV <sup>5</sup>	120-277V <sup>5</sup>		(T5HO only)
347	347V		

<sup>1</sup> IP65 certified when specified with occupancy sensor.

<sup>2</sup> When specifying EM option for wet location fixture, EM ballast for enclosed and gasketed fixture is required.

<sup>3</sup> Amalgam lamps recommended. HA/40C option not available with EM ballast option or 354T5H cross-section.

<sup>4</sup> EM ballast is not available with HA/40C or 354T5H cross-section.

<sup>5</sup> Two (2) fuses required when specifying 208V or 240V.

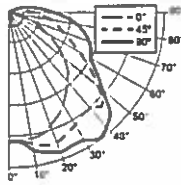
<sup>6</sup> This option requires a tamper-resistant tool (must be ordered separately). Please specify quantity required per project.

PHOTOMETRY - T5

Catalog #: 96-4-254T5H-PC-EB2

TEST REPORT INFORMATION

- ▶ Test Report #: 13316.0
- ▶ Date: 11/01/06
- ▶ Lamp Type: FP54T5HO/835
- ▶ Lamp Quantity: 2



LUMEN SUMMARY

Zone	Lumens	% Lamp	% Fixture
0 - 30	1343	13.4	20.2
0 - 40	2294	22.9	34.5
0 - 60	4378	43.8	65.9
0 - 90	6194	61.9	93.2
90 - 120	426	4.3	6.4
90 - 130	450	4.5	6.8
90 - 150	455	4.6	6.8
90 - 180	455	4.6	6.8
<b>Total Luminaire:</b>			
0 - 180	6649	66.5	100.0

Total Luminaire Optical Efficiency: 66.5%  
IES Spacing Criteria: End = 1.2, Diagonal = 1.5, Across = 1.7

CANDLEPOWER DISTRIBUTION

Vertical Angle	Horizontal Angle			Zonal Lumens
	0°	45°	90°	
0	1539	1539	1539	
5	1525	1535	1558	146.8
15	1505	1653	1723	462.0
25	1367	1597	1748	733.9
35	1174	1501	1846	951.6
45	982	1568	1692	1109.8
55	698	1176	1276	974.3
65	421	802	1074	791.2
75	169	591	917	606.2
85	37	398	672	417.7
90	18	287	539	

ZONAL CAVITY COEFFICIENTS

Room Cavity Ratio	Ceiling			Wall			Floor		
	.80	.70	.50	.80	.70	.50	.80	.70	.50
0	.78	.78	.78	.76	.76	.76	.71	.71	.71
1	.70	.67	.63	.68	.65	.62	.61	.59	.56
2	.64	.58	.53	.61	.56	.52	.53	.49	.46
3	.58	.51	.45	.56	.49	.44	.47	.42	.38
4	.53	.45	.39	.51	.43	.38	.41	.36	.32
5	.48	.39	.33	.46	.38	.32	.36	.31	.27
6	.44	.35	.29	.42	.34	.28	.32	.27	.23
7	.41	.31	.25	.39	.30	.25	.29	.24	.20
8	.37	.28	.22	.36	.27	.22	.26	.21	.17
9	.34	.25	.19	.33	.24	.19	.23	.18	.15
10	.32	.23	.17	.31	.22	.17	.21	.16	.13

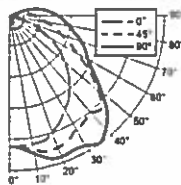
Effective Floor Cavity Reflectance = .20

PHOTOMETRY - T8

Catalog #: 96-4-232-PC-EB2

TEST REPORT INFORMATION

- ▶ Test Report #: 13317.0
- ▶ Date: 11/01/06
- ▶ Lamp Type: F32T8/835
- ▶ Lamp Quantity: 2



LUMEN SUMMARY

Zone	Lumens	% Lamp	% Fixture
0 - 30	912	15.5	20.5
0 - 40	1560	26.4	35.1
0 - 60	2933	49.7	66.0
0 - 90	4082	69.2	91.8
90 - 120	347	5.9	7.8
90 - 130	362	6.1	8.1
90 - 150	364	6.2	8.2
90 - 180	364	6.2	8.2
<b>Total Luminaire:</b>			
0 - 180	4446	75.4	100.0

Total Luminaire Optical Efficiency: 75.4%  
IES Spacing Criteria: End = 1.2, Diagonal = 1.5, Across = 1.7

CANDLEPOWER DISTRIBUTION

Vertical Angle	Horizontal Angle			Zonal Lumens
	0°	45°	90°	
0	1039	1039	1039	
5	1037	1051	1064	100.3
15	1029	1116	1179	314.6
25	933	1092	1181	496.8
35	813	1028	1242	647.9
45	661	1034	1099	729.7
55	470	774	830	643.3
65	285	523	666	508.3
75	119	376	541	376.4
85	23	251	437	265.1
90	11	211	389	

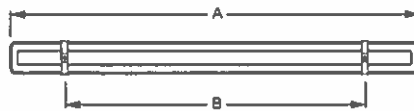
ZONAL CAVITY COEFFICIENTS

Room Cavity Ratio	Ceiling			Wall			Floor		
	.80	.70	.50	.80	.70	.50	.80	.70	.50
0	.88	.88	.88	.85	.85	.85	.80	.80	.80
1	.80	.76	.72	.77	.73	.70	.69	.66	.64
2	.72	.66	.60	.70	.64	.59	.60	.56	.52
3	.66	.58	.51	.63	.56	.50	.53	.48	.44
4	.60	.51	.44	.58	.49	.43	.47	.41	.37
5	.55	.45	.38	.53	.44	.37	.41	.36	.31
6	.50	.40	.33	.48	.39	.32	.37	.31	.27
7	.46	.36	.29	.44	.35	.28	.33	.27	.23
8	.42	.32	.25	.41	.31	.25	.29	.24	.20
9	.39	.28	.22	.38	.28	.22	.26	.21	.17
10	.36	.26	.20	.35	.25	.19	.24	.19	.15

Effective Floor Cavity Reflectance = .20

FIXTURE DETAILS

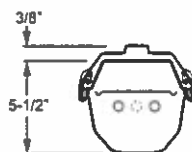
BACK VIEW



Nominal Length	Overall Length (A)	Mounting Distance (B)
4'	51-7/8"	36"-41" OC
8'	100-1/4"	70"-80" OC

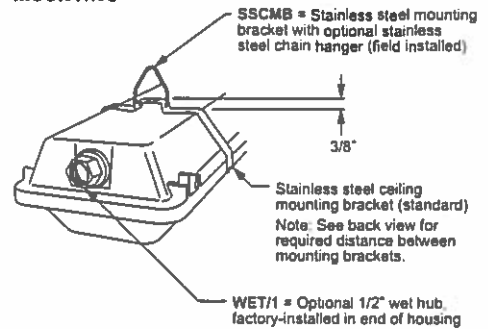
SHIELDING OPTIONS

Nominal Length	Catalog Numbers			
	PC	HIA	DCL	DFR
4'	Standard	Optional	Optional	Optional
8'	N/A	Standard	Optional	Optional



Shown with DCL or DFR diffuser

MOUNTING



## Pat Branson

---

**From:** Ken Knowles <[light@gci.net](mailto:light@gci.net)>  
**Sent:** Monday, December 16, 2013 4:52 PM  
**To:** Pat Branson  
**Subject:** Fwd: FW:Local Electric Lighting  
**Attachments:** Kodiak Senior Center Lighting Proposal.pdf; Untitled attachment 00004.htm; 96.pdf; Untitled attachment 00007.htm; efs\_f.pdf; Untitled attachment 00010.htm

Pat.. Charlie has provided 2 proposals, one for a food service grade light EFS...(the more expensive, but meets code)... The 2nd for replacing with good lights.... In his proposal, he mentions I will provide dust control and painting, patch holes, etc.... I estimate 20 hrs for me at \$75/, plus some materials, under \$500... So my add-on would be "not to exceed" \$2000... Happy to meet with you if you need additional info...

Ken

Sent from Ken's iPhone

Begin forwarded message:

**From:** Charlie Jerling <[locale@ak.net](mailto:locale@ak.net)>  
**Date:** December 16, 2013 at 3:43:47 PM AKST  
**To:** Ken Knowles <[light@gci.net](mailto:light@gci.net)>  
**Subject:** FW:

---

**From:** Kerri Gunter [<mailto:kerri.locale@ak.net>]  
**Sent:** Monday, December 16, 2013 3:35 PM  
**To:** [locale@ak.net](mailto:locale@ak.net)  
**Subject:**