

Agency: Commerce, Community and Economic Development**Grants to Named Recipients (AS 37.05.316)****Grant Recipient: The Alaska Wildlife Conservation Center****Federal Tax ID: 92-0170600****Project Title:****Project Type: New Construction and Land Acquisition**

Alaska Wildlife Conservation Center - The Bear Education Awareness Research Sanctuary (B.E.A.R.S.)

State Funding Requested: \$2,500,000**House District: Southcentral Region (7-30)**

Future Funding May Be Requested

Brief Project Description:

This project will construct an 11,000 square foot building offering an interactive immersion experience with world-class wildlife viewing and science education connected to a natural environment. The BEARS facility serving as the integrated classroom resource for a classroom's science curriculum blending informal and formal settings, resources, and pedagogies.

Funding Plan:

Total Project Cost:	\$7,265,435
Funding Already Secured:	(\$258,000)
FY2015 State Funding Request:	(\$2,500,000)
Project Deficit:	\$4,507,435

*Funding Details:**2009 1,000,000 for the development of the Phase I portion**2010 400,000 SOA funding for the continued development of the project in addition AWCC raised funding to supplement the education development program.**STG and Enstar donated 160,000 in time and materials for Pat's Rock art 40,000 to the project 2012 SOA funding for the development of Phase II reduced from 2,500,000 to 625,000 for the development and construction of Phase II AWCC and STG made cost reductions***Detailed Project Description and Justification:**

Project Title: The Bear Education Awareness Research Sanctuary (B.E.A.R.S) at the Alaska Wildlife Conservation Center

Project Cost: 7,265,435 estimated

Project Description

The B.E.A.R.S. Center (Phase III) will be a sustainable education, research, and interpretive facility and new infrastructure for Alaska. The 11,000 square feet of interactive experience will offer world-class wildlife viewing and science education connected to a natural environment. The educational space will provide facilities for captive research as well as, present research and management of Alaska's wildlife. As part of an effort to build a culture of conservation in Alaska, the four-phase project will result in a conservation campus with a multi-functional structure, which will include renewable "green" resources.

The planning and construction of the center has been executed through a conservative, four-phased process of

development linked to a solid Business Plan for Sustainability.

In accordance with the sustainability plan, Phase III of the project is due to be completed in 2016 when Anchorage receives world-wide attention as the host city for the 24th Annual International Conference on Bear Research & Management. This very important conference will provide the perfect venue to show case to the world visitors Alaska's bear management programs and the sustainability efforts taken to ensure responsible resource management.

The building will include a large interpretive gallery, themed to demonstrate the history, ecology and conservation management of bears. The B.E.A.R.S facility will serve as the integrated classroom resource for science curriculum blending informal and formal settings, resources, and pedagogies. The facility features a conference room, an outdoor viewing deck, animal holding facilities, public rest rooms, staff office space, and a small gift shop.

Educational Interpretive Exhibits - Alaska is the only place in the world with the habitat supporting a stable population of 3 of the 8 species of bears.

The educational program offerings are STEM-based (Science, Technology, Engineering, Mathematics) and full service, combining on-site programs for students, classroom resources, and teacher professional development. Typically, these programs are offered at no charge.

- These programs can be offered to students nationally and worldwide through web based connections and interactivity.
- Portals will connect students to other learning sites to support in class learning.
- Site based learning in the form of independent or group activity will be offered. All are developed
- Teach the Teacher programs will guide and support educators.

The site-based programs can either be delivered directly to the classroom or serve as the support structure for the teacher for "supplementary Classroom Enrichment." All lessons are developed using: Next Generation Science Standards: MS-LS2-1, MS-LS2-2, MS-LS2-4; Common Core State Standards: RST.6-8.1, RST.6-8.7, RST.6-8.8, RI.8.8, WHST.6-8.1, SL.8.1, SL.8.4, MP. 4, 6.SP.B.5; NSES National Science Standards: A 1-6, C 6, F 2, G 3; ITEA National Technology Standards: 2, 3, and 8; ABET National Engineering Standards: 1, 2, 3; NCTM National Math Standards: 4, 6, 8 and 10

B.E.A.R.S Center interactive exhibits will engage visitors in topics such as Bear Safety, Bear Management, Bear Conservation in Alaska, sustainable development in bear habitat, Global Climate Change and its effect on bears, the differences between polar, brown and black bears and the other 5 bears of the world, bear communication and bear viewing in Alaska. Bear artifacts and life sized models of the eight bear species will also be featured. Photographs will line the hallways from various well-known wildlife photographers and will be accompanied by wall-sized window viewing of the centers' brown bears.

Educational Classroom Area - A multitude of education methods will be employed to connect students around the world to the message of conservation education. This area will be used for various educational classes, community meetings, and revenue generating events.

Conference Room - A conference room will have a large viewing window looking beyond the brown bear enclosure to the breathtaking Chugach National Forest.

Outdoor Viewing Deck- From the safety of the outdoor viewing deck, visitors will be able to witness and photograph brown bear behavior up close. Outdoor interpretive panels, along with mounted binoculars, offer the visitor the opportunity to gain

further insight into these magnificent animals.

Animal Holding Area- Four 15'x15' indoor dens will allow the bears to be safely restrained for medical treatments, research projects, and ground maintenance. These dens will also provide an area for hibernation, allowing an undisturbed view of the bears in hibernation for students, researchers.

Please see addendum for continued information

Project Timeline:

Currently the planning for phase III continues which includes an aggressive funding program seeking to begin construction in the spring of 2014 with major construction through the 2014-2015 construction season. This will allow a completion of the building for the 2016 spring season and the grand opening for May/June of 2016. This will have peak expenditure in both spring and summer of 2014 and 2015 with project conclusion in 2016 in time for the International conference.

Entity Responsible for the Ongoing Operation and Maintenance of this Project:

The Alaska Wildlife Conservation Center

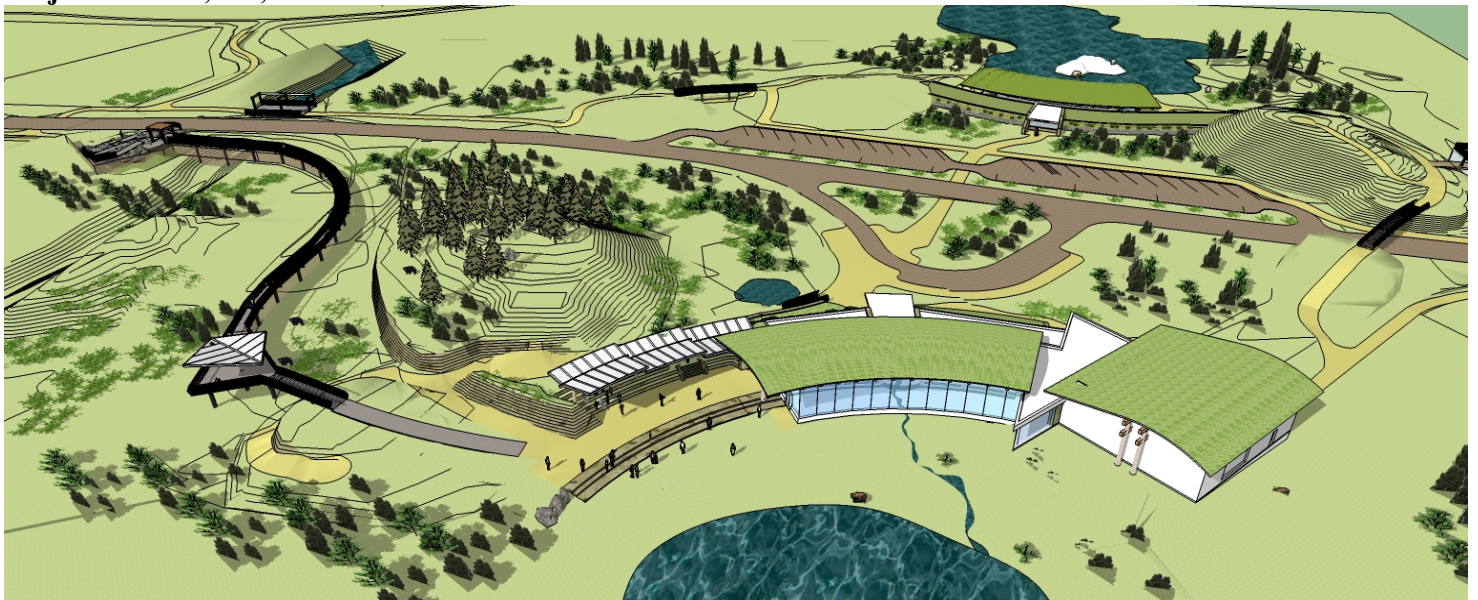
Grant Recipient Contact Information:

Name: Steve Mendive
Title: AWCC Director of Development
Address: PO Box 949
Girdwood , Alaska 99587
Phone Number: (907)244-8102
Email: steve@alaskawildlife.org

Has this project been through a public review process at the local level and is it a community priority? Yes No

Project Title: The Bear Education Awareness Research Sanctuary (B.E.A.R.S) at the Alaska Wildlife Conservation Center

Project Cost: 7,265,435 estimated

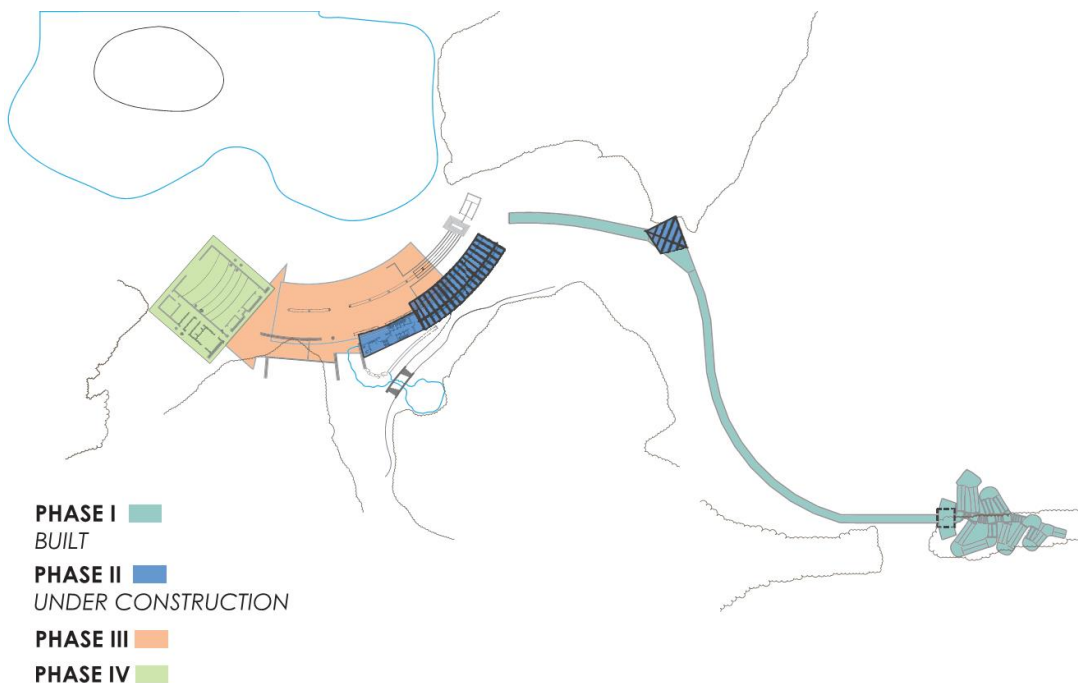


© Z Architects

Project Description

The B.E.A.R.S. Phase III will be a sustainable education, research, and interpretive facility becoming new infrastructure for Alaska. The 11,000 square foot building offering an interactive experience with world-class wildlife viewing and science education, connected to a natural environment. As part of an effort to build a culture of conservation in Alaska, the four-phase project will result in a conservation campus with a multi-functional structure, serving as both visitor center and integrated classroom resource for science curriculum, blending informal and formal settings, resources, and pedagogies.

The planning and construction of the center has been executed through a conservative, four-phased process of development linked to a solid Business Plan for Sustainability.





© Z Architects

B.E.A.R.S. Phase I --Completed

Phase I opened the spring of 2013.

Welcoming thousands of visitors during AWCC's 20th anniversary during the 2013 season.



© Z Architects

B.E.A.R.S. Phase II-Under Construction and nearing completion.

Phase II is scheduled to open the spring of 2014.

The site will include bear aware programs for the general public and scheduled daily programs on the science of bear conservation and management.

