

Agency: Commerce, Community and Economic Development

Grants to Named Recipients (AS 37.05.316)

Grant Recipient: Juneau Cooperative Christian Ministries

Federal Tax ID: 92-0085663

Project Title:

Project Type: Maintenance and Repairs

Juneau Cooperative Christian Ministries - Glory Hole Shelter Roof Replacement

State Funding Requested: \$65,000
One-Time Need

House District: Juneau Areawide (3-4)

Brief Project Description:

The Glory Hole seeks to replace a leaky roof to preserve the building, prevent mold, and maintain a dry inside environment.

Funding Plan:

Total Cost of Project: \$70,000

	<u>Funding Secured</u>		<u>Other Pending Requests</u>		<u>Anticipated Future Need</u>	
	<i>Amount</i>	<i>FY</i>	<i>Amount</i>	<i>FY</i>	<i>Amount</i>	<i>FY</i>
Other Funds	\$5,000					
Total	\$5,000					

Explanation of Other Funds:

The Glory Hole will take on all the management and administrative costs associated with this project, as well as contribute \$1,152 to contractor costs.

Detailed Project Description and Justification:

The Glory Hole is the only emergency shelter and soup kitchen in Juneau, serving those most in need. Its mission is to provide food, shelter, and compassion. In the past three years, The Glory Hole provided over 160,000 meals and 25,000 bed nights. In addition, the shelter provided over 15,000 "other" services, including laundry, showers, and bus tokens for transportation to jobs, job interviews, housing searches, and medical facilities for health care.

The Glory Hole roof has several leaks. Water is rotting the wood framing underneath the rubber material and seeps into the dorms. Every year, the Glory Hole spends funds to patch the roof. Every year new leaks form. Recently, the roof was assessed and we were told annual patching cannot extend its life beyond another three years. In the meantime, the vents are leaking, contributing to hazardous mold colonies in the dorms. The awning on the front of the structure also needs replacement as part of the project. It lacks a drainage system, backing water into the side of the building. The awning creates hazards to passers-by.

Costs of repairs and maintenance for three years are estimated to equal 1/4 of the replacement cost, making the project cost-effective and timely. Roof replacement will also improve energy efficiency of the building. Replacing the awning would remove a hazard from Franklin Street.

The Glory Hole provides great benefits to the homeless and less fortunate in Juneau. It helps take the burden off the State

For use by Co-chair Staff Only:

\$65,000
Approved

of being the sole source of help for those most in need. This project would maintain operational integrity and a safe and healthy environment both inside and outside the building.

Project Timeline:

The project will begin as soon as funding is secured and weather permits. The project will take roughly seven weeks to complete.

Entity Responsible for the Ongoing Operation and Maintenance of this Project:

Juneau Cooperative Christian Ministries dba the Glory Hole

Grant Recipient Contact Information:

Name: Mariya Lovishchuk
Address: 247 S. Franklin St
Juneau, AK 99801
Phone Number: (907)586-4159
Email: thegloryhole@gci.net

Has this project been through a public review process at the local level and is it a community priority? Yes No

Budget Number
North Pacific Erectors, Inc.
 PO Box 240748
 Douglas, AK 99824
 Phone: (907) 364-3288
 Fax: (907) 364-3464

Proposal Submitted to Maryia Lovishchuk		Phone 907-586-4159	Date 9/11/2009
Street Franklin St		Job Name Glory Hole Roof Renovation	
City, State, Zip Code Juneau AK 99801		Job Location Glory Hole Building	
Architect N/A	Date of Plans N/A	Project Manager Chris Gilberto	Job Phone 907-364-3288

We hereby submit the following Estimate:
 To provide all material and labor to remove the existing membrane roof, and canopy, and replace it with a new .075 EPDM membrane. The membrane will be installed to meet Carlisle 20year 100MPH wind warranty. Also included is additional insulation to increase the roofs R value to 30. A OSB cover board will be installed over the insulation. All insulation and OSB will be mechanically fastened, with the EPDM fully adhered. Additional work includes all new flashings at the parapet walls and the roof eaves.

This price includes a 20 year warranty, all permitting, electrical and mechanical.

Note: This Estimate is good for 30 days and will be void afterwards due to material quotes

Total Cost of this Proposal \$ **66,152**

Payment to be made as follows:
Monthly per Statement

All material is guaranteed to be as specified. All work to be completed in a workmanlike manner according to standard practices. Any alteration or deviation from above specifications involving extra costs will be executed only upon written orders, and will become an extra charge over and above the estimate. All agreements contingent upon strikes, accidents or delays beyond our control. Owner to carry fire, tornado, and other necessary insurance. Our workers are fully covered by Workman's Compensation Insurance.

Authorized
 Signature Chris Gilberto

Note: This estimate may be withdrawn by us if not accepted within 30 days.

Acceptance of Estimate - The above prices, specifications and conditions are satisfactory and are hereby accepted. You are authorized to do the work as specified. Payment will be made as outlined above.

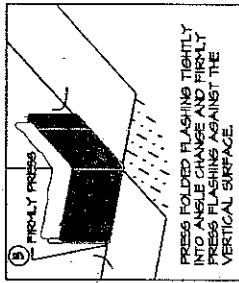
Signature: _____

Date of Acceptance: _____

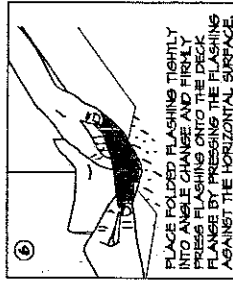
Signature: _____

UNIVERSAL DETAIL

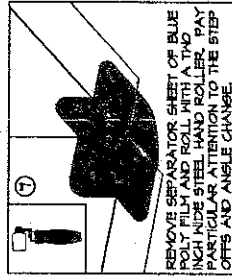
SURE-SEAL PRESSURE-SENSITIVE PS-15-F
 OUTSIDE CORNER WITH CURED MEMBRANE
 CONTINUED ...



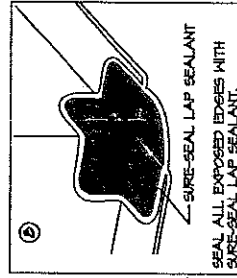
3 PRESS FOLDED FLASHING TIGHTLY INTO ANGLE CHANGE AND FIRMLY PRESS FLASHING AGAINST THE VERTICAL SURFACE.



4 PLACE FOLDED FLASHING TIGHTLY INTO ANGLE CHANGE AND FIRMLY PRESS FLASHING AGAINST THE HORIZONTAL SURFACE.



5 REMOVE SEPARATOR SHEET OF BLUE POLY FILM AND ROLL WITH A TWO INCH WIDE STEEL HAND ROLLER. PAY PARTICULAR ATTENTION TO THE STEP OFFS AND ANGLE CHANGE.



6 SEAL ALL EXPOSED EDGES WITH SURE-SEAL LAP SEALANT.

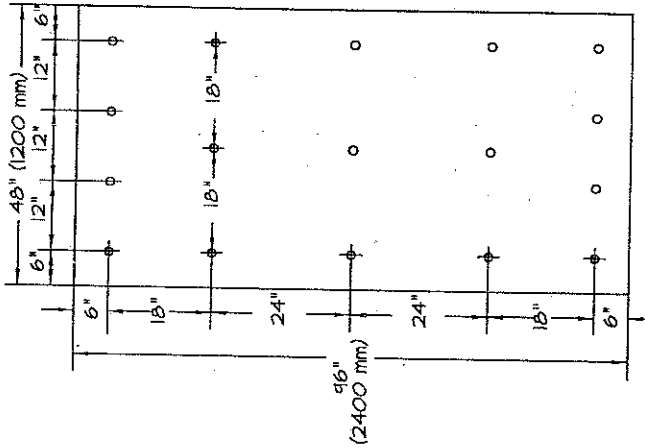
NOTE:

FOR PREVIOUS CURB/WALL FLASHING, IN-SEAM SEALANT IS REQUIRED ON ALL CURED TO CURED MEMBRANE SPLICES.

ADHERED ROOFING SYSTEM

4' (1200 mm) x 8' (2400 mm) A-27-D
 OSB ATTACHMENT

CARLISLE'S REQUIRED FASTENING PATTERN FOR ORIENTED STRAND BOARD (OSB) ON SURE-SEAL®/SURE-WHITE™ ADHERED ROOFING SYSTEMS.



NOTES:

1. IF A FACTORY MUTUAL (FM) RATING IS NOT REQUIRED, THE FOLLOWING TOLERANCE ON DIMENSIONS BETWEEN FASTENERS ARE PERMITTED.

DIMENSIONS SHOWN ON DRAWING	PERMITTED TOLERANCES
6" (150 mm)	± 1/2" (13 mm)
12" (300 mm)	± 1" (25 mm)
18" (450 mm)	± 1-1/2" (40 mm)
24" (600 mm)	± 2" (50 mm)

2. JOINTS IN OSB MUST BE STAGGERED WITH JOINTS IN INSULATION BELOW (IF SPECIFIED).

3. OSB MUST BE POSITIONED WITH AN 1/8" (3 mm) GAP BETWEEN BOARDS.

4. IF A WIND UPLIFT WARRANTY GREATER THAN 55 MPH (88 km/h) IS SPECIFIED, CARLISLE MUST BE CONTACTED PRIOR TO PROJECT BID FOR VERIFICATION OF APPLICABLE REQUIREMENTS.

5. FOR CRITERIA ON INSULATION FASTENERS AND PLATES, SEE SPECIFICATIONS.

A-27-C

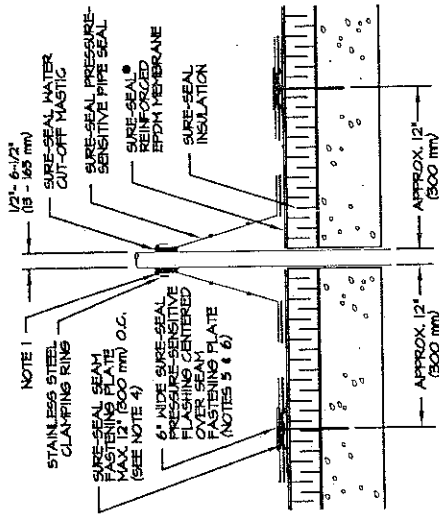
00 mm)

THE
 SNERS ARE

TIONAL
 PERIMETER
 SHEETS 1-26

MECHANICALLY-FASTENED ROOFING SYSTEM
**PRESSURE-SENSITIVE
 PIPE FLASHING** MFS-8-B

FOR PIPES BETWEEN 1/2 INCH TO 6-1/2 INCH DIAMETER



NOTE 1

STAINLESS STEEL
 CLAMPING RING

SURE-SEAL SEAM
 FASTENING PLATE
 (SEE NOTE 4)
 6" WIDE SURE-SEAL
 PRESSURE-SENSITIVE
 FASTENING PLATE
 OVER SEAM
 (NOTES 5 & 6)

1/2" - 6-1/2"
 (13 - 165 mm)

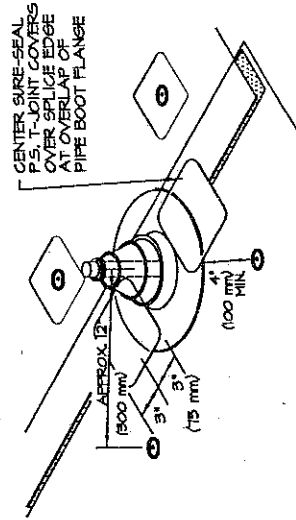
SURE-SEAL WATER
 CUT-OFF MEMBRANE

SURE-SEAL[®]
 REINFORCED
 EPDM MEMBRANE

SURE-SEAL
 INSULATION

APPROX. 12"
 (300 mm)

APPROX. 12"
 (300 mm)



CENTER SURE-SEAL
 OVER SPlice EDGE
 AT OVERLAP OF
 PIPE BOOT FLANGE

APPROX. 12"
 (300 mm)

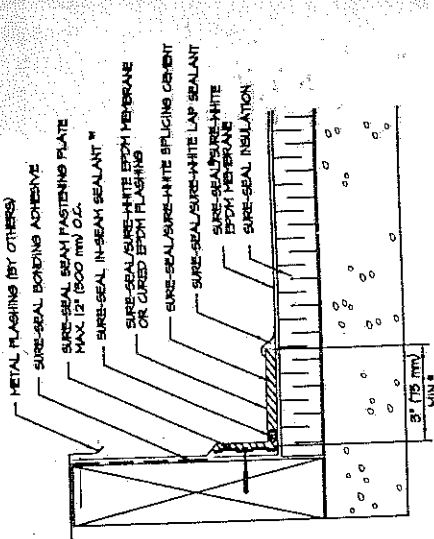
3"
 (75 mm)

4"
 (100 mm) MIN.

NOTES:

1. PRE-MOLDED PIPE FLASHING MUST HAVE INTACT RIB AT THE TOP EDGE REGARDLESS OF PIPE DIAMETER.
2. SEE SPECIFICATION FOR OTHER DETAILS REQUIRING SEAM FASTENING PLATES.
3. INSTALL A MINIMUM OF 4 SEAM FASTENING PLATES FOR PIPES WITH A DIAMETER UP TO 6" (150 mm). ADDITIONAL SEAM FASTENING PLATES WILL BE REQUIRED FOR PIPES GREATER THAN 6" (150 mm) IN DIAMETER AND SHALL BE SPACED 12" (300 mm) ON CENTER MAXIMUM.
4. POLYMER SEAM PLATES ARE REQUIRED IN LIEU OF SEAM FASTENING PLATES OVER STEEL DECKS.
5. FLASHING OVER SEAM FASTENING PLATES AND PIPE SEAM DECK FLANGE CANNOT BE OVERLAPPED.
6. SURE-SEAL HP-250 PRIMER MUST BE APPLIED TO MEMBRANE SURFACE PRIOR TO APPLYING PRESSURE-SENSITIVE FLASHING (OVER FASTENING PLATES) AND PRESSURE-SENSITIVE PIPE FLASHING.

UNIVERSAL DETAIL
CURB FLASHING (OPTION #1) U-5-A



* FOR PROPER IN-SEAM SEALANT PLACEMENT REFER TO DETAIL U-2-A

FLASH ALL OUTSIDE CORNERS WITH TWO (2) PIECES OF INCURRED ELASTOFORM FLASHING AS PER DETAIL U-5-C OR WITH SURE-SEAL OUTSIDE CORNER AS PER DETAIL PS-15-1* (SEE NOTE 2)

SURE-SEAL IN-SEAM SEALANT REQUIRED ON ALL CURVED-TO-CURED SPLICES APPROX 1/2" (13 mm) FROM EDGE

CURED EPDM MEMBRANE

3" (75 mm) MIN.

NOTES:

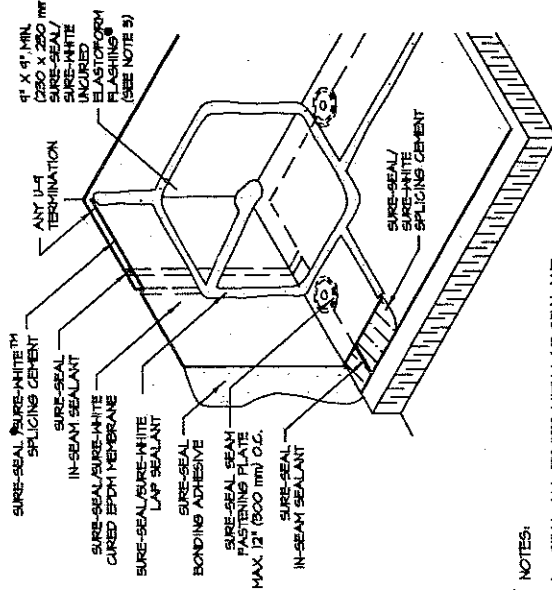
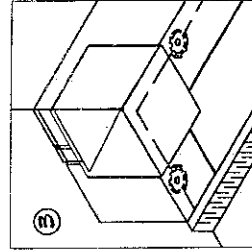
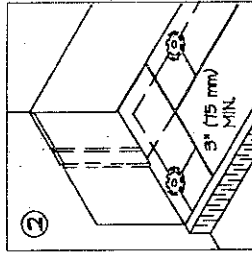
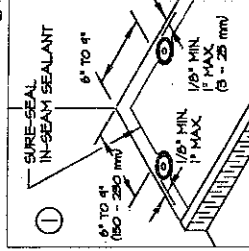
1. FASTEN MEMBRANE FLASHING 12" (300 mm) ON CENTER. IF FASTENER PENETRATES METAL, COUNTER FLASHING USE EPDM WASHER. APPLY WATER CUT-OFF MASTIC OR CAULK FASTENER HEAD.
2. IF VERTICAL SPLICE IS NOT LOCATED AT CORNER, 6" (150 mm) WIDE INCURRED ELASTOFORM FLASHING OR PRESSURE-SENSITIVE FLASHING MUST BE CENTERED OVER FIELD SPLICE AT ANGLE CHANGE.
3. FASTENING PLATES MAY BE INSTALLED HORIZONTALLY.
4. SCAFTAPE MAY BE USED IN LIEU OF SPLICING CEMENT. REFER TO DETAIL U-5-B.

UNIVERSAL DETAIL

INSIDE CORNER SEPARATE
EPDM WALL FLASHING

U-15-A

OPTION #2



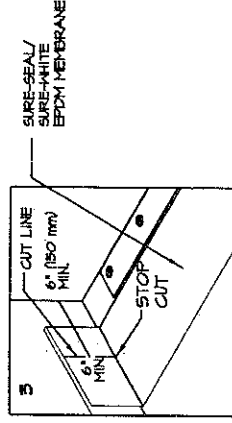
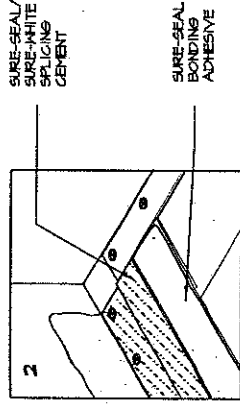
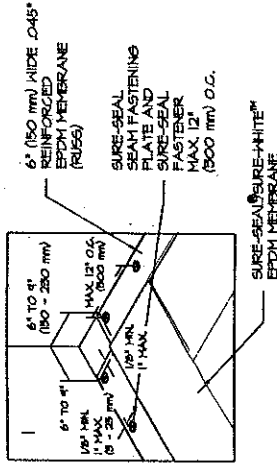
NOTES:
1. SEAL ALL EDGES WITH LAP SEALANT.
2. IN-SEAM SEALANT IS REQUIRED ON ALL CURED TO CURED MEMBRANE SPLICES.

3. FOR USE OF SURE-SEAL PRESSURE-SENSITIVE INSIDE CORNER FLASHING, REFER TO DETAIL U-15-E.
4. SEMI-CURED PRESSURE-SENSITIVE FLASHING ROLL CANNOT BE USED AT CORNERS. ELASTOFORM FLASHING OR SURE-SEAL INSIDE/OUTSIDE CORNERS MUST BE USED.
5. SURE-SEAL PRESSURE-SENSITIVE IN CONJUNCTION WITH PRIMER CAN BE USED IN LBI OF ELASTOFORM FLASHING.

UNIVERSAL DETAIL

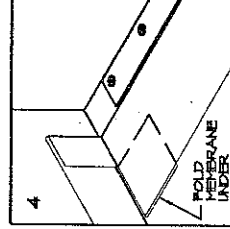
INSIDE CORNER CONTINUOUS
EPDM WALL FLASHING WITH RUSS

U-15-D



NOTES:

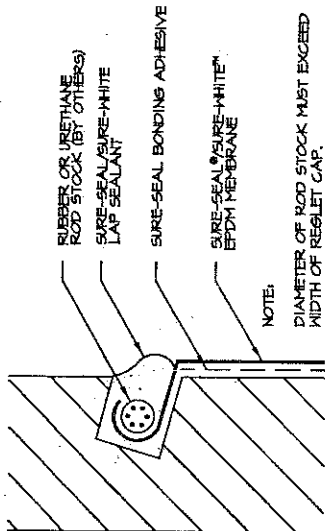
1. FOR RUSS REQUIREMENT, REFER TO U-12-C OR U-12-D.
2. SEMI-CURED PRESSURE-SENSITIVE FLASHING ROLLS CANNOT BE USED AT CORNERS. ELASTOFORM FLASHING OR SURE-SEAL INSIDE/OUTSIDE CORNERS MUST BE USED.



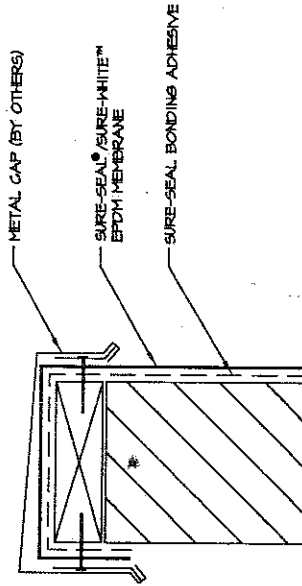
UNIVERSAL DETAIL

VERTICAL TERMINATIONS U-9

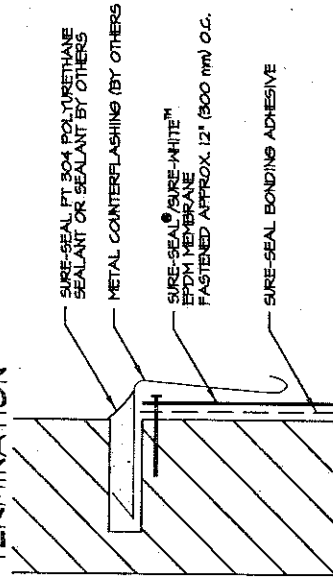
REGLET TERMINATION U-9-A



CAP FLASHING TERMINATION U-9-B



COUNTERFLASHING TERMINATION U-9-C



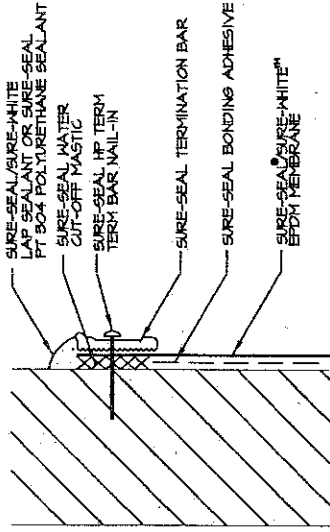
NOTES:

- IF FASTENER PENETRATES METAL COUNTERFLASHING USE EPDM WASHER, APPLY WATER CUT-OFF MASTIC OR CAULK FASTENER HEAD.
- FOR 15 YEAR WARRANTY, A CARLISLE TERMINATION BAR (SEE DETAIL U-9-H) MUST BE INSTALLED BEHIND THE COUNTERFLASHING.

UNIVERSAL DETAIL

VERTICAL TERMINATIONS U-9

MECHANICAL TERMINATION U-9-D



NOTES:

- APPLY ON HARD SMOOTH SURFACE ONLY; NOT FOR USE ON WOOD.
- WATER CUT-OFF MASTIC MUST BE HELD UNDER CONSTANT COMPRESSION.
- DO NOT WRAP COMPRESSION TERMINATION AROUND CORNERS.
- ALLOW 1/4" (6 mm) MINIMUM TO 1/2" (13 mm) MAXIMUM SPACING BETWEEN CONSECUTIVE LENGTHS OF TERMINATION BAR.
- TERMINATION BAR BY OTHERS MUST BE 1/8" x 1" (3 x 25 mm) MINIMUM.

COPING STONE TERMINATION U-9-E

