

DEPARTMENT OF HEALTH AND SOCIAL SERVICES
Division of Public Assistance
Public Assistance Administration

06-8158
 Division Director
 R27
 Jnu EX

Director's Office

06-8637
 Admin Assist II
 R14
 Jnu CL

06-T023
 Project Manager
 R23
 EX Anc

06-8599
 Program Coord
 R20
 Jnu CL

06-8122
 Office Assistant I
 R8
 Jnu CL

06-?433
 Project Assistant
 R16
 EX Jnu

Administrative Services

06-8213
 Division Op Mgr
 R24
 Jnu CL

06-8123
 Admin Ops Mgr II
 R23
 Jnu CL

06-1860
 Analyst Prog V
 R22
 Anc CL

06-9137
 Admin Officer II
 R19
 Jnu CL

02-7485
 Admin Offer I
 R17
 Jnu CL

06-1839
 Analyst Prog IV
 R20
 Anc CL

06-1737
 Accounting Tech II
 R14
 Jnu CL

Program Integrity and Analysis

06-8029
 Office Assistant II
 R10
 Jnu CL

06-8550
 Research Analyst III
 R18
 Jnu CL

06-8411
 Research Analyst IV
 R21
 Jnu CL

06-8589
 PA Fld Svcs Mgr I
 R19
 Anc CL

06-8543
 PA Analyst II
 R18
 Jnu CL

06-8636
 Proj Asst
 R16
 Anch CL

06-8218
 PA Analyst I
 R16
 Jnu CL

06-8394
 Eligibility Tech II
 R14
 Jnu CL

06-8497
 PA Analyst II
 R18
 Jnu CL

Policy & Program Development

06-8028
 PA Program Officer
 R21
 Jnu CL

06-8380
 SS Program Coord
 R20
 Jnu CL

06-8638
 SS Prog Coord
 R20
 Jnu CL

06-8030
 Eligibility Tech II
 R14
 Jnu CL

06-8138
 Program Coordinator
 I
 R18
 Jnu CL

06-8346
 PA Analyst I
 R16
 Jnu CL

06-4069
 PA Analyst II
 R18
 Jnu CL

06-8178
 PA Analyst II
 R18
 Jnu CL

Field Services

Child Care Benefits

Quality Control and Fraud Investigation

Women, Infants and Children

General Relief Assistance Senior Benefits Program

Staff Development & Training

06-8121
 Chief, PA Field Ops
 R22
 Jnu CL

06-8659
 PA Program Officer
 R21
 Jnu CL

06-8047
 PA Program Officer
 R21
 Jnu CL

06-1528
 HPM III
 R21
 Jnu CL

06-8630
 Eligibility Tech III
 R15
 Wasilla CL

06-8165
 Training Specialist III
 R20
 Anc CL

Energy Assistance Program

Adult Public Assistance

06-8211
 Program Coordinator
 R20
 Jnu CL

02-7625
 Nurse Consultant I
 R22
 Anc CL

07-5056
 Program Coordinator I
 R18
 Jnu CL

DEPARTMENT OF HEALTH AND SOCIAL SERVICES
 Division of Public Assistance
 Field Services
 Administration

06-8158
 Division Director
 R27
 Jnu EX

06-8121
 Chief, PA Field Ops
 R22
 Jnu CL

Denali KidCare Staff Development & Training Heating Assistance Southeast Region Central Region Coastal Region Northern Region

06-8592
 PA Analyst II
 R18
 Anc CL

06-8612
 Eligibility Office Mgr I
 R18
 Anc CL

06-8165
 Training Specialist III
 R20
 Anc CL

06-8211
 Program Coordinator II
 R20
 Jnu CL

06-8185
 PA Field Svcs Mgr II
 R21
 Ktn CL

06-8582
 PA Field Svcs Mgr II
 R21
 Anc CL

06-8068
 PA Field Svcs Mgr II
 R21
 Anc CL

06-8042
 PA Field Svcs Mgr II
 R21
 Fbx CL

Field Support Unit

Systems Support Team

06-8329
 PA Analyst II
 R18
 Anc CL

06-8105
 PA Program Officer
 R21
 Anc CL

06-8554
 Project Coordinator I
 R18
 Anc CL

06-8048
 PA Analyst I
 R16
 Anc CL

06-8003
 PA Analyst I
 R16
 Anc CL

06-8414
 PA Analyst I
 R16
 Anc CL

06-8399
 PA Analyst I
 R16
 Anc CL

06-8064
 PA Analyst I
 R16
 Anc CL

06-8272
 Admin Assist II
 R14
 Anc CL

06-8580
 PA Analyst I
 R16
 Anc CL

06-8535
 PA Analyst I
 R16
 Anc CL

06-8660
 Elig Tech II
 R14
 Anc CL

06-8485
 Office Assistant II
 R10
 Anc CL

06-8533
 PA Analyst I
 R16
 Anc CL

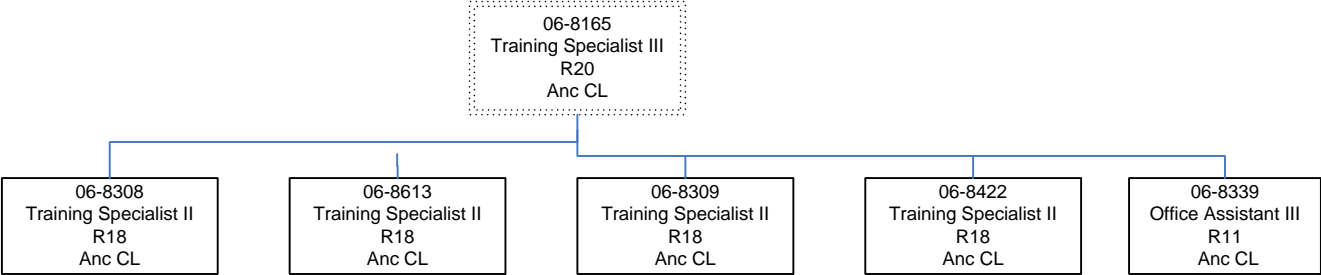
06-8534
 PA Analyst I
 R16
 Anc CL

06-8077
 Admin Assistant II
 R14
 Anc CL

06-1030
 PA Analyst I
 R16
 Anc CL

06-8598
 PA Analyst I
 R16
 Anc CL

DEPARTMENT OF HEALTH AND SOCIAL SERVICES
Division of Public Assistance
Field Services
Staff Development & Training

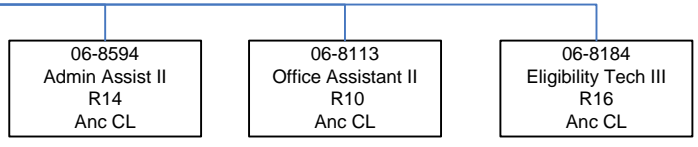
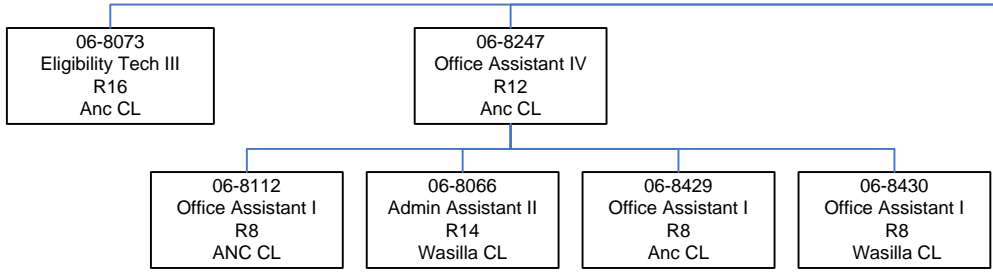


DEPARTMENT OF HEALTH AND SOCIAL SERVICES
 Division of Public Assistance
 Field Services
 Central Region
 Regional Support and Adult Public Assistance

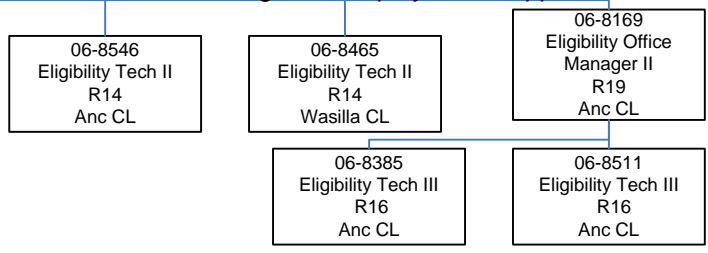
06-8582
 PA Field Svcs Mgr II
 R21
 Anc CL

Adult Public Assistance Clerical Team

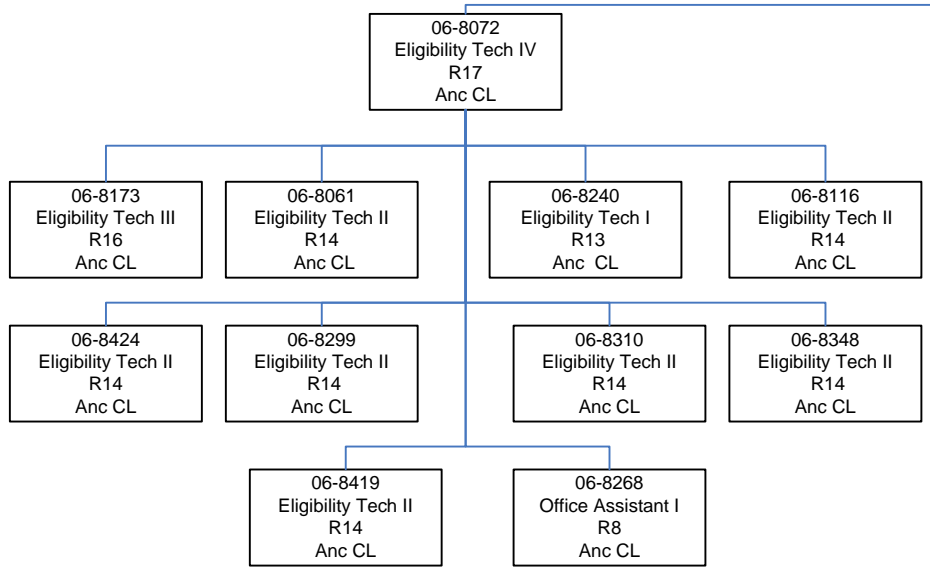
Regional Support



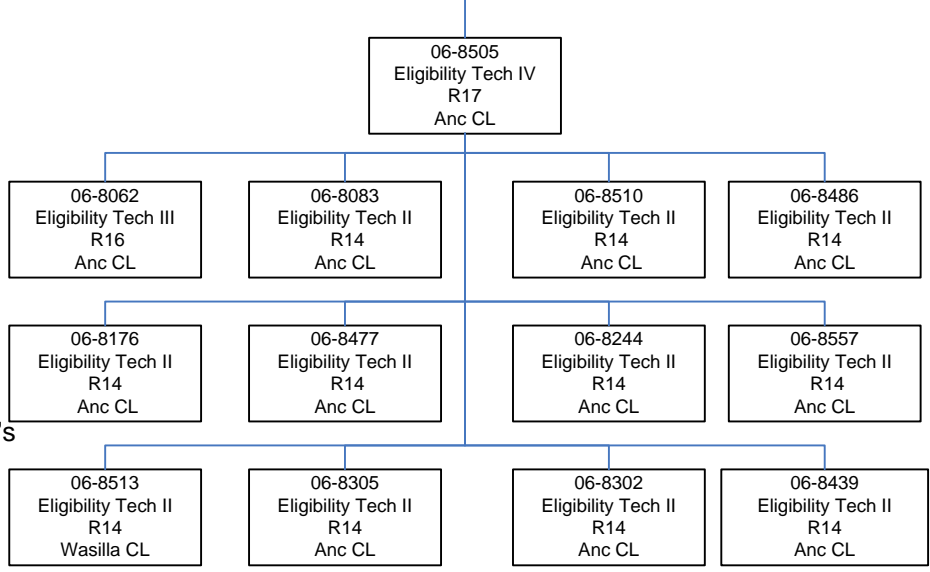
Regional Employment Support



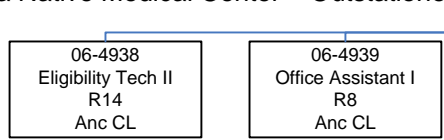
Adult Public Assistance – Team 2



Adult Public Assistance – Team 1

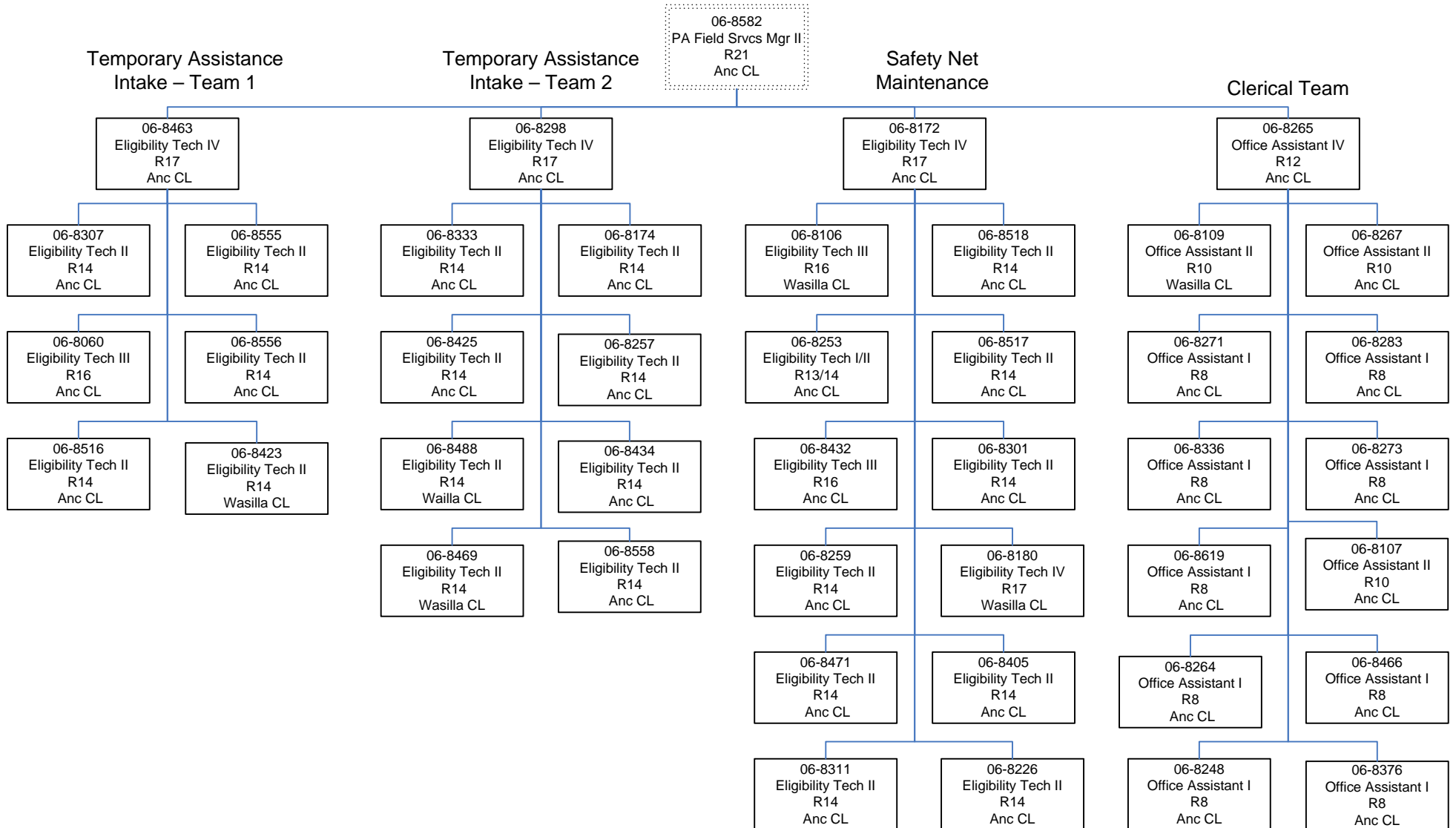


Alaska Native Medical Center – Outstationed PCN's

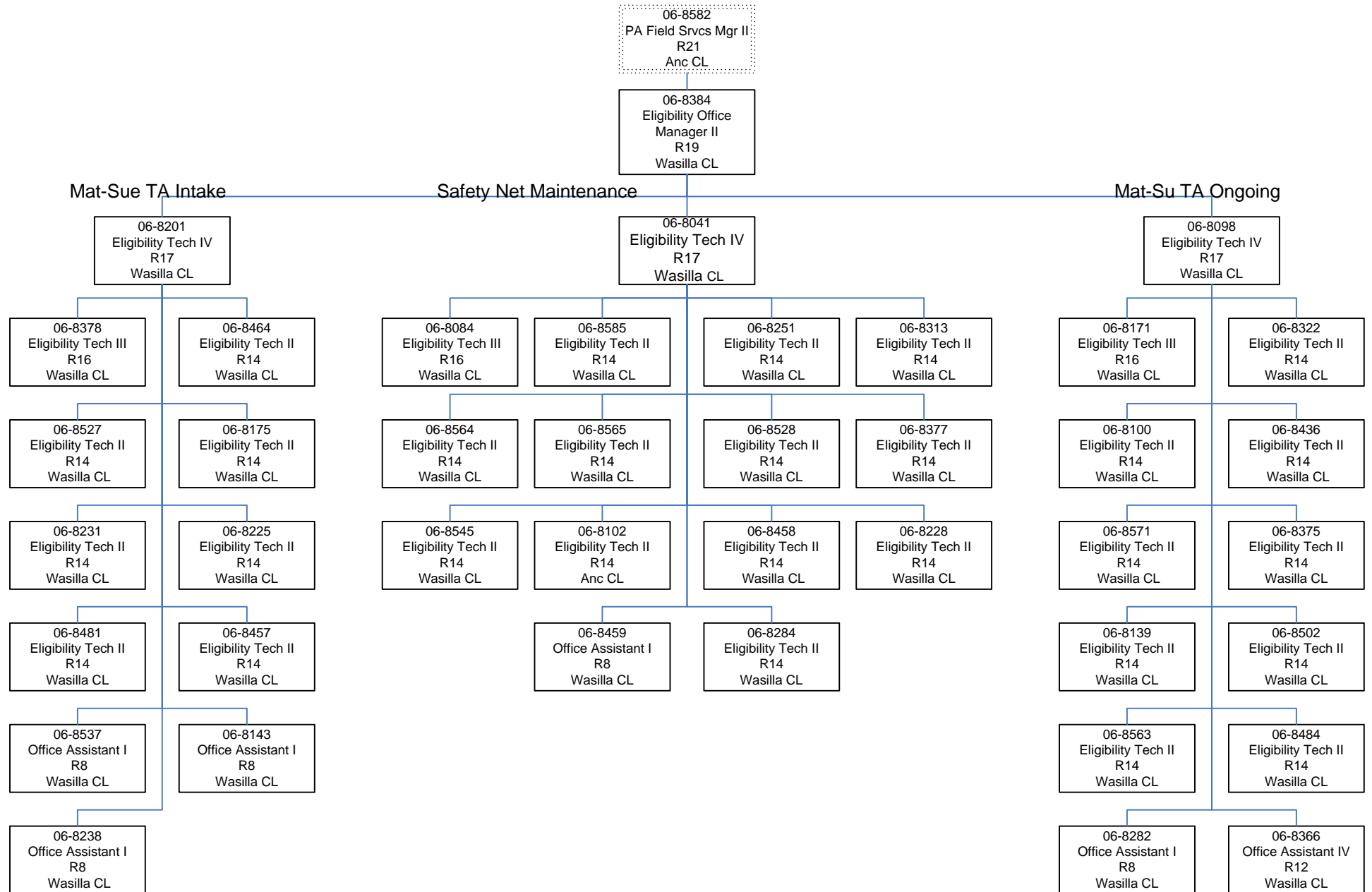


Outstationed
 At Gateway
 Learning Center

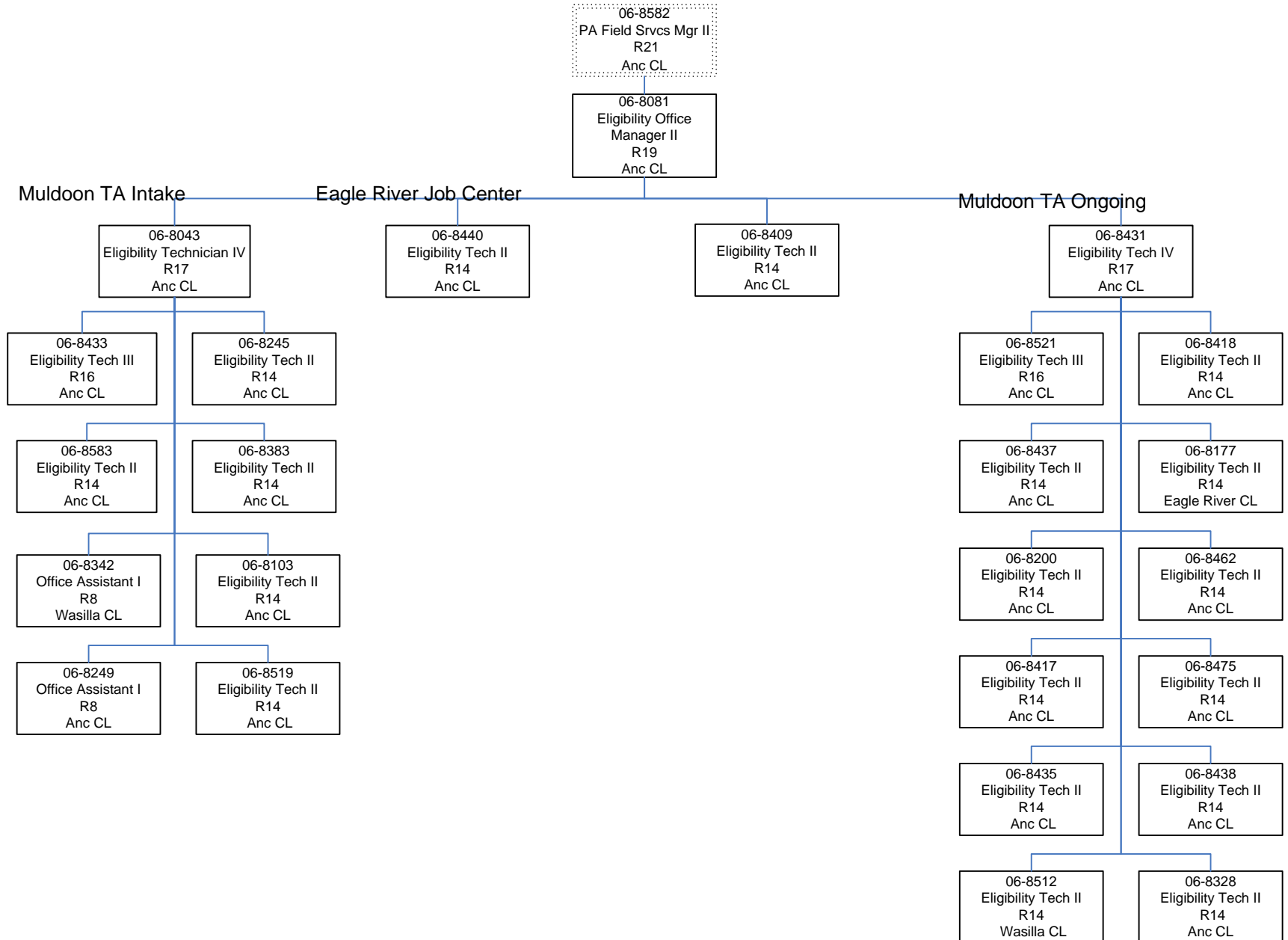
DEPARTMENT OF HEALTH AND SOCIAL SERVICES
 Division of Public Assistance
 Field Services
 Central Region
 Anchorage/Gambell



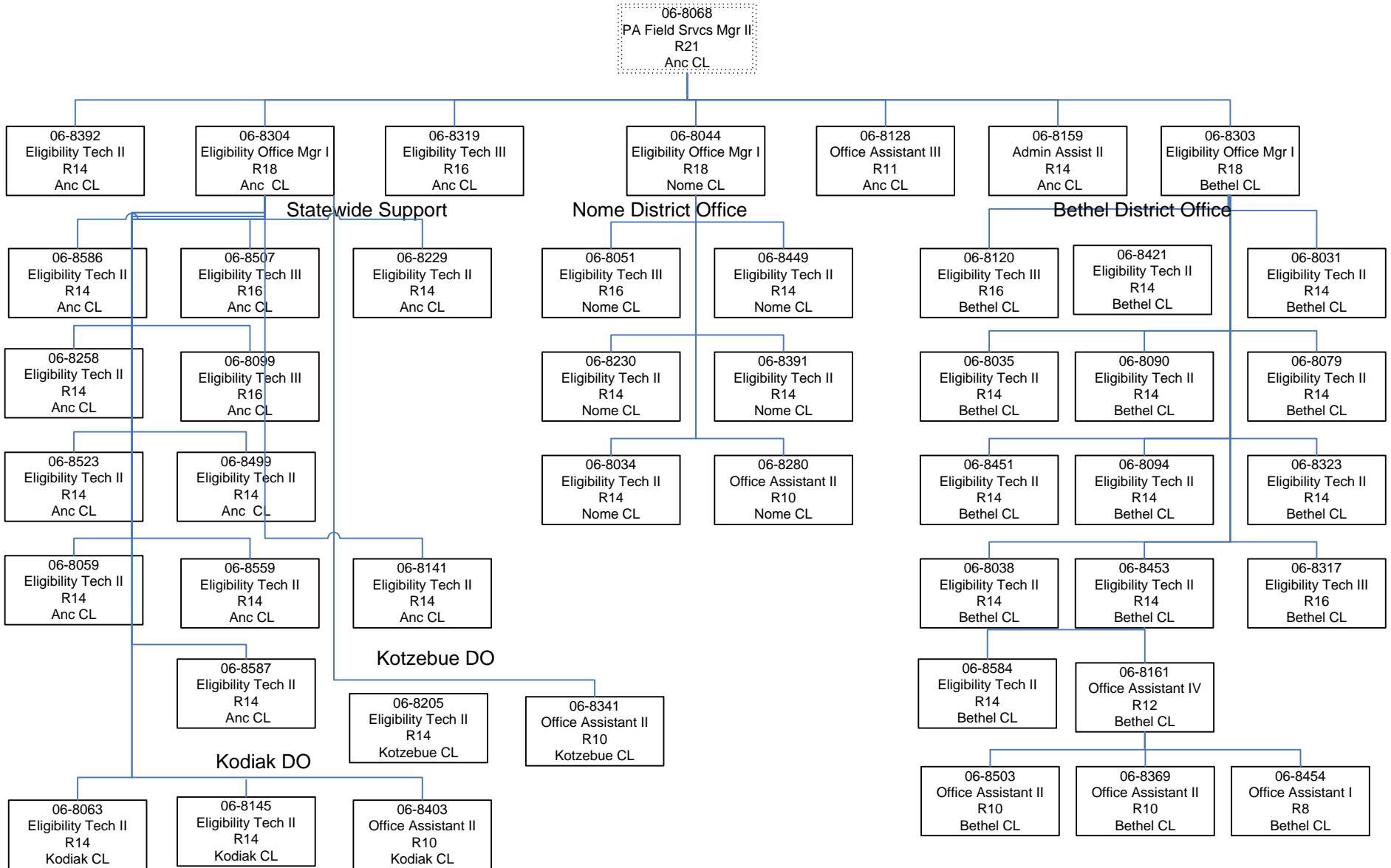
DEPARTMENT OF HEALTH AND SOCIAL SERVICES
 Division of Public Assistance
 Field Services
 Central Region
 Mat-Su



DEPARTMENT OF HEALTH AND SOCIAL SERVICES
 Division of Public Assistance
 Field Services
 Central Region
 Muldoon



DEPARTMENT OF HEALTH AND SOCIAL SERVICES
 Division of Public Assistance
 Field Services
 Coastal Region



DEPARTMENT OF HEALTH AND SOCIAL SERVICES
 Division of Public Assistance
 Field Services
 Coastal Region

06-8068
 PA Field Svcs Mgr II
 R21
 Anc CL

06-8050
 Eligibility Office Mgr I
 R19
 Kenai CL

06-8269
 Eligibility Tech IV
 R17
 Anc CL

06-8368
 Eligibility Tech IV
 R17
 Anc CL

**Coastal Field Office
 Clerical Unit**

06-8110
 Office Assistant I
 R8
 Anc CL

06-8266
 Office Assistant I
 R8
 Anc CL

06-8524
 Office Assistant I
 R8
 Anc CL

06-8474
 Eligibility Tech II
 R14
 Anch CL

06-8500
 Eligibility Tech II
 R14
 Anc CL

Unit I

06-8181
 Eligibility Tech III
 R16
 Kenai CL

06-8526
 Eligibility Tech II
 R14
 Kenai CL

06-8473
 Eligibility Tech II
 R14
 Kenai CL

06-8286
 Eligibility Tech II
 R14
 Kenai CL

06-8287
 Eligibility Tech II
 R14
 Kenai CL

06-8320
 Eligibility Tech II
 R14
 Kenai CL

06-8482
 Eligibility Tech II
 R14
 Kenai CL

06-8054
 Eligibility Tech II
 R14
 Kenai CL

06-8508
 Eligibility Tech II
 R14
 Kenai CL

06-8562
 Eligibility Tech II
 R14
 Kenai CL

Clerical Unit

06-8331
 Eligibility Tech IV
 R17
 Kenai CL

06-8207
 Office Assistant II
 R10
 Kenai CL

06-8467
 Office Assistant I
 R8
 Kenai CL

06-8288
 Office Assistant I
 R8
 Kenai CL

06-8289
 Office Assistant I
 R8
 Kenai CL

Long-Term Care Unit I

06-8111
 Eligibility Tech III
 R16
 Anc CL

06-8416
 Eligibility Tech II
 R14
 Anc CL

06-8460
 Eligibility Tech II
 R14
 Anc CL

06-8560
 Eligibility Tech II
 R14
 Anc CL

06-8239
 Eligibility Tech II
 R14
 Anc CL

06-8441
 Eligibility Tech II
 R14
 Anc CL

06-8242
 Eligibility Tech II
 R14
 Anc CL

Long-Term Care Unit II

06-8117
 Eligibility Tech III
 R16
 Anc CL

06-8483
 Eligibility Tech II
 R14
 Anc CL

06-8461
 Eligibility Tech II
 R14
 Anc CL

06-8506
 Eligibility Tech II
 R14
 Anc CL

06-8472
 Eligibility Tech II
 R14
 Anc CL

06-8101
 Eligibility Tech II
 R14
 Anc CL

06-8091
 Eligibility Tech II
 R14
 Anc CL

Homer District Office

06-8525
 Eligibility Tech II
 R14
 Homer CL

06-8334
 Office Assistant II
 R10
 Homer CL

06-8295
 Eligibility Tech II
 R14
 Anch CL

06-8300
 Eligibility Tech II
 R14
 Anc CL

06-8501
 Eligibility Tech III
 R16
 Kenai CL

06-8285
 Eligibility Tech II
 R14
 Kenai CL

06-8227
 Eligibility Tech II
 R14
 Kenai CL

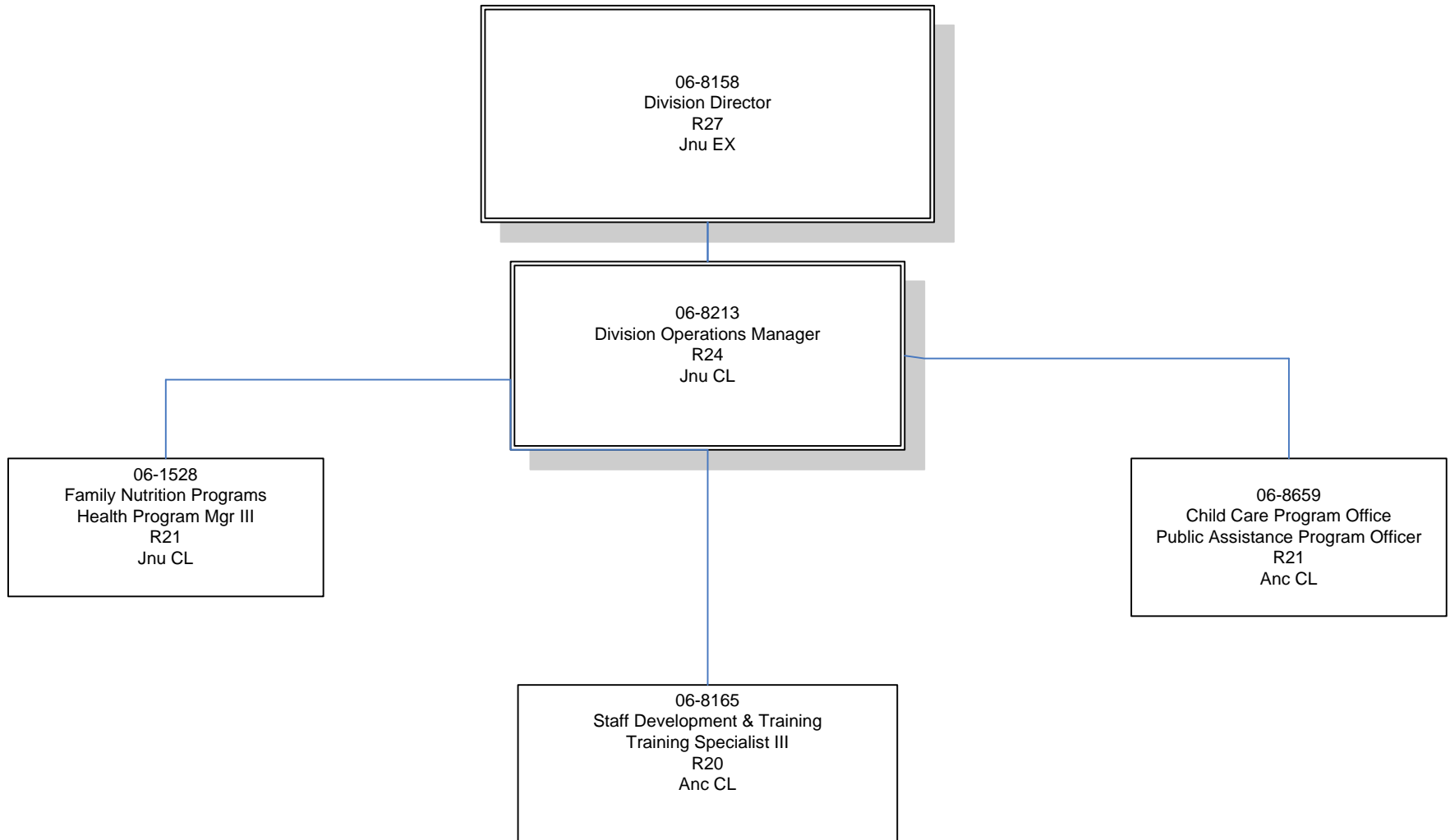
06-8204
 Eligibility Tech II
 R14
 Kenai CL

06-8561
 Eligibility Tech II
 R14
 Kenai CL

06-8541
 Eligibility Tech II
 R14
 Kenai CL

06-8321
 Eligibility Tech II
 R14
 Kenai CL

Department of Health & Social Services
Division of Public Assistance
Directors Office



06-8042
PA Field Svcs Mgr II
R21
Fbx CL

Regional Team

Intake Team

Maintenance Team 2

Work Services

06-8315
Eligibility Tech IV
R17
Fbx CL

06-8275
Admin Assist II
R14
Fbx CL

06-8040
Eligibility Tech IV
R17
Fbx CL

06-8442
Eligibility Tech IV
R17
Fbx CL

06-8548
Social Worker II
R16
Fbx CL

06-8208
Office Assistant IV
R12
Fbx CL

06-8089
Eligibility Tech II
R14
Fbx CL

06-8390
Office Assistant I
R8
Fbx CL

06-8202
Eligibility Tech II
R14
Fbx CL

06-8078
Eligibility Tech II
R14
Fbx CL

06-8057
Eligibility Tech III
R16
Fbx CL

06-8387
Social Worker II
R16
Fbx CL

06-8237
Office Assistant I
R8
Fbx CL

06-8150
Eligibility Tech II
R14
Fbx CL

06-8118
Eligibility Tech III
R16
Fbx CL

06-8182
Eligibility Tech II
R14
Fbx CL

06-8036
Eligibility Tech II
R14
Fbx CL

06-8446
Eligibility Tech II
R114
Fbx CL

06-8568
Social Worker II
R16
Fbx CL

06-8281
Office Assistant I
R8
Fbx CL

06-8179
Eligibility Tech III
R16
Fbx CL

06-8316
Eligibility Tech III
R16
Fbx CL

06-8479
Eligibility Tech II
R14
Fbx CL

06-8260
Eligibility Tech II
R14
Fbx CL

06-8547
Eligibility Tech II
R14
Fbx CL

06-8335
Office Assistant I
R8
Fbx CL

06-8162
Eligibility Tech II
R14
Fbx CL

06-8624
PA Analyst I
R16
ANC CL

06-8235
Eligibility Tech III
R16
Fbx CL

06-8540
Eligibility Tech II
R14
Fbx CL

06-8236
Eligibility Tech II
R14
Fbx CL

06-8025
Office Assistant I
R8
Fbx CL

06-8445
Eligibility Tech II
R14
Fbx CL

06-8566
Eligibility Tech III
R16
Fbx CL

06-8444
Eligibility Tech II
R14
Fbx CL

06-8443
Eligibility Tech II
R14
Fbx CL

06-8593
Office Assistant I
R8
Fbx CL

06-8420
Eligibility Tech II
R14
Fbx CL

06-8478
Eligibility Tech II
R14
Fbx CL

06-8055
Eligibility Tech I
R13
Fbx CL

06-8318
Eligibility Tech II
R14
Fbx CL

06-8276
Office Assistant II
R10
Fbx CL

06-8045
Eligibility Tech II
R14
Fbx CL

06-8261
Eligibility Tech II
R14
Fbx CL

06-8480
Eligibility Tech II
R14
Fbx CL

06-8274
Office Assistant II
R10
Fbx CL

06-8067
Office Assistant I
R8
Fbx CL

06-8203
Eligibility Tech II
R14
Fbx CL

06-8408
Eligibility Tech II
R14
Fbx CL

06-8277
Office Assistant I
R8
Anc CL

06-8279
Office Assistant I
R8
Fbx CL

DEPARTMENT OF HEALTH AND SOCIAL SERVICES
 Division of Public Assistance
 Field Services
 Southeast Region

06-8185
 PA Field Srvs Mgr II
 R21
 Ktn CL

Juneau Family
 Support Unit

SE APA Unit

Ketchikan District Office

