

Health and Social Services
 Office of Children's Services
 Children's Services Management (2666)
 FY12

06-9269
 Director
 R27 PX
 Anchorage
 PX

06-1581
 Social Services
 Program Officer
 R21 CL
 Anchorage
 SS

06-1938
 Health Program
 Mgr II
 R19 CL
 Anchorage
 GP

06-0621
 Admin Operations
 Manager II
 R23 CL
 Juneau
 SS

06-4502
 Social Services Prog. Admin.
 R23 CL
 Fairbanks
 SS

06-9299
 Deputy Director
 R25 PX
 Juneau
 PX
 NEW

06-9300 (06?861)
 Social Services
 Program Officer
 R21 CL
 Juneau
 SU

06-9296
 Children's Services
 Manager
 R21 CL
 Bethel
 SS

06-4507
 Children's Services
 Manager
 21 CL
 Fairbanks
 SS

06-3068
 SSPO
 R21 CL
 Juneau
 SS

06-3871
 Social Services
 Prog. Admin.
 R23 CL
 Juneau
 SS

06-4591
 Project Manager
 R22 XE
 Juneau
 XE

06-4564
 Social Services
 Program Officer
 R21 CL
 Juneau
 SS

06-4637
 Social Services
 Program
 Coordinator
 R20 CL
 Juneau
 GP

06-4505
 Children's Services
 Manager
 R21 CL
 Juneau
 SS

06-3074
 Childrens Services
 Manager
 21 CL
 Wasilla
 SS

06-1735
 Social Services
 Program Coord
 R20 CL
 Anchorage
 SS

06-3962
 Research Analyst IV
 R21 CL
 Juneau
 SS

06-4506
 Childrens Services
 Manager
 R21 CL
 Anchorage
 SS

06-9138
 Social Services
 Program Coordinator
 R20 CL
 Juneau
 GP

06-4570
 Research Analyst II
 R16 CL
 Juneau
 GP

06-3949
 Social Services
 Program
 Coordinator
 R20 CL
 Juneau
 GP

06-9167
 Social Service
 Prog Officer
 R21 CL
 Anchorage
 SS

Health and Social Services
 Office of Children's Services
 Children's Services Management (2666)
 FY12

069269
 Director
 R27 PX
 Anchorage
 XE

06-0621
 Administrative Operations Manager II
 R23 CL
 Juneau
 SS

06-3944
 Project Coordinator
 R20 CL
 Juneau
 SS

06-1346
 Accountant II/III
 R18 CL
 Juneau
 SS

06-3075
 Social Service Program
 Coordinator
 R20 CL
 Juneau
 GP

06-4614
 Social Services Program Officer
 R21 CL
 Juneau
 SS

06-0662
 Administrative Officer II
 R19 CL
 Juneau
 SS

06-0661
 Project Assistant
 R16 CL
 Juneau
 SS

06-4609
 Accounting
 Technician III
 R16 CL
 Juneau
 SS

06-4635
 Accounting
 Technician III
 R16 CL
 Juneau
 SS

06-3707
 Accountant II
 R16 CL
 Juneau
 GP

06-3948
 Accounting
 Technician II
 R14 CL
 Juneau
 GP

06-3028
 Office Assistant II
 R10 CL
 Juneau
 GP

06-4516
 Administrative
 Assistant II
 R14 CL
 Juneau
 SS

06-0660
 Eligibility
 Technician II
 R14 CL
 Juneau
 GP

06-3702
 Accounting Clerk
 R10 CL
 Juneau
 GP

06-0642
 Accounting
 Technician I
 R12 CL
 Juneau
 GP

06-3396
 Eligibility
 Technician III
 R16 CL
 Juneau
 GP

06-4610
 Accounting
 Technician II
 R14 CL
 Juneau
 GP

06-3704
 Social Services
 Associate II
 R12 CL
 Juneau
 GP

06-3112
 Administrative
 Assistant II
 R14 CL
 Juneau
 GP

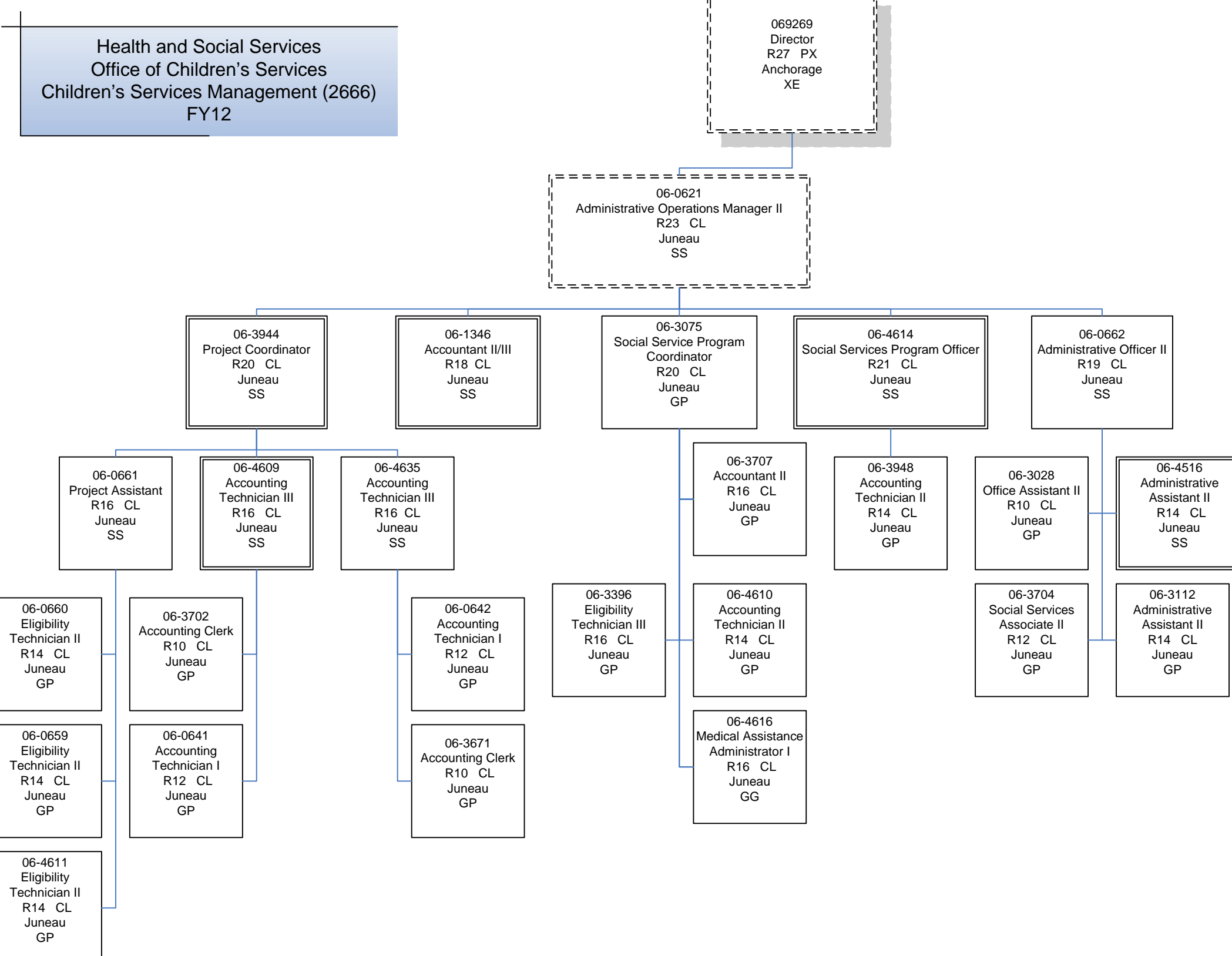
06-0659
 Eligibility
 Technician II
 R14 CL
 Juneau
 GP

06-0641
 Accounting
 Technician I
 R12 CL
 Juneau
 GP

06-3671
 Accounting Clerk
 R10 CL
 Juneau
 GP

06-4616
 Medical Assistance
 Administrator I
 R16 CL
 Juneau
 GG

06-4611
 Eligibility
 Technician II
 R14 CL
 Juneau
 GP



Health and Social Services
 Office of Children's Services
 Children's Services Management (2666)
 FY12

06-9269
 R27 PX
 Director
 Anchorage
 XE Anchorage

06-9299
 (Deputy Director I)
 R24 XE
 Juneau
 XE

Resource Family Services

Program Array

06-3068
 Social Svcs Prog Officer
 R21 CL
 Juneau
 SS

06-3871
 Social Services
 Prog. Admin.
 R23 CL
 Juneau
 SS

06-4564
 Social Services Program Officer
 R21 CL
 Juneau
 SS

06-9273
 Community Care Lic Spec. III
 R20 CL
 Anchorage
 SS

06-4588
 Social Services Prog Coord
 R20 CL
 Juneau
 SS

06-4636
 Social Services Prog Coord
 20
 Juneau
 SS

06-3881
 Social Svcs Prog
 Coord
 R20 CL
 Juneau
 GP

06-3709
 Social Services
 Program Coordinator
 R20 CL
 Juneau
 GP

06-3972
 Prog Coordinator I
 R18 CL
 Juneau
 GP

06-9294
 Prog Coordinator I
 R18 CL
 Juneau
 GP

06-4625
 Social Services
 Associate II
 R12 CL
 Juneau
 GP

06-4567
 Social Services
 Program Coordinator
 R20 CL
 Juneau
 GP

06-1350
 Social Services
 Program Coordinator
 R20 CL
 Juneau
 SS

06-3705
 Social Services
 Program Coordinator
 R20 CL
 Juneau
 GG

06-3457
 Social Services
 Program Coordinator
 R20 CL
 Juneau
 GP

06-3011
 Office Assistant I
 R8 CL
 Juneau
 GP