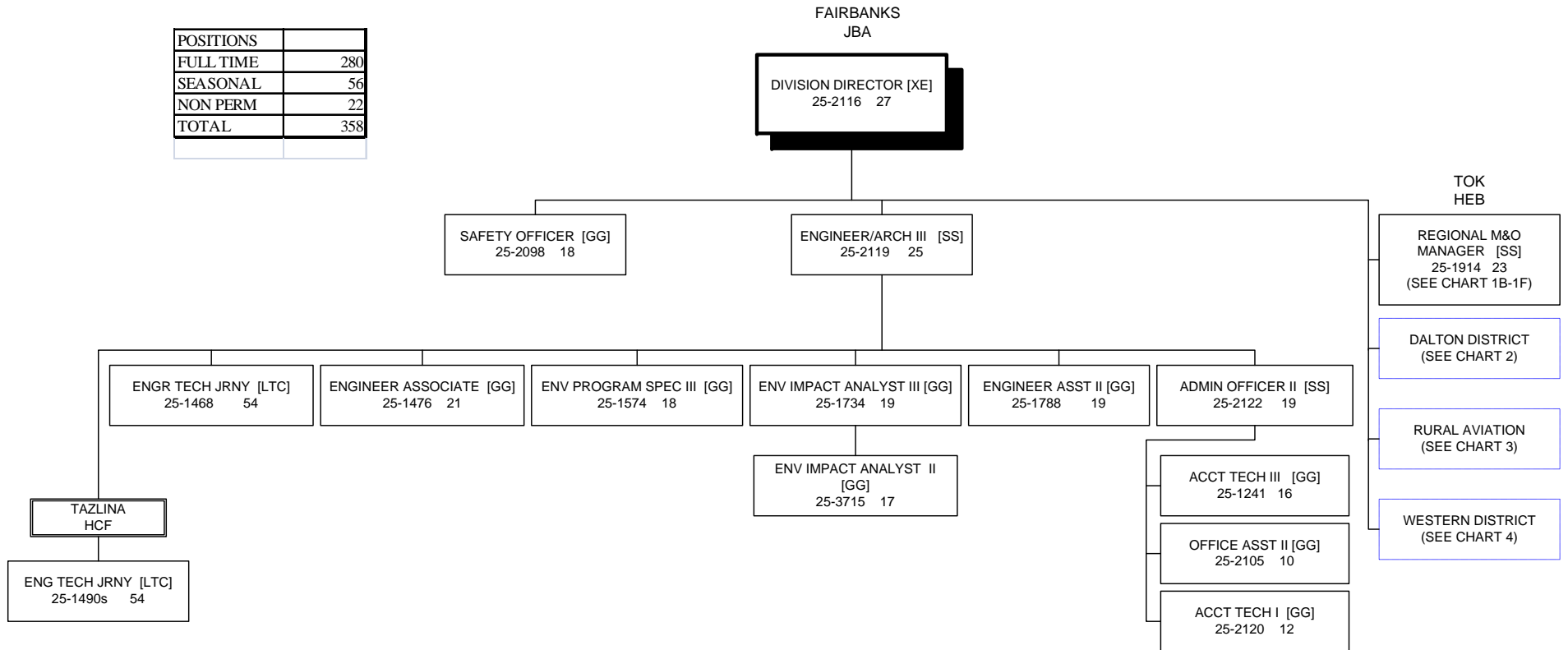
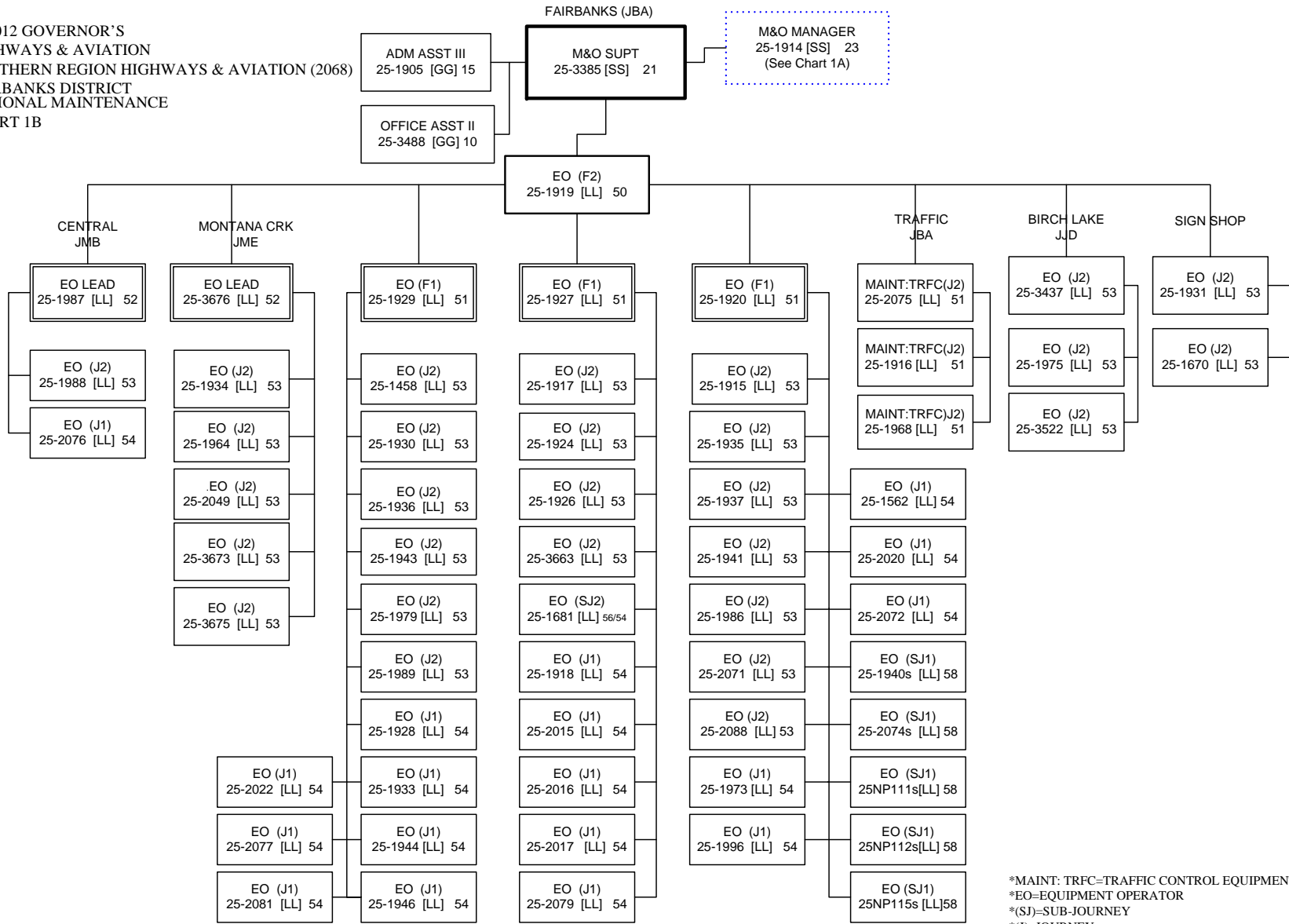


FY2012 GOVERNOR'S
HIGHWAYS & AVIATION
NORTHERN REGION HIGHWAYS & AVIATION (2068)
M&O ADMINISTRATION/ENGINEERING
CHART 1A

POSITIONS	
FULL TIME	280
SEASONAL	56
NON PERM	22
TOTAL	358

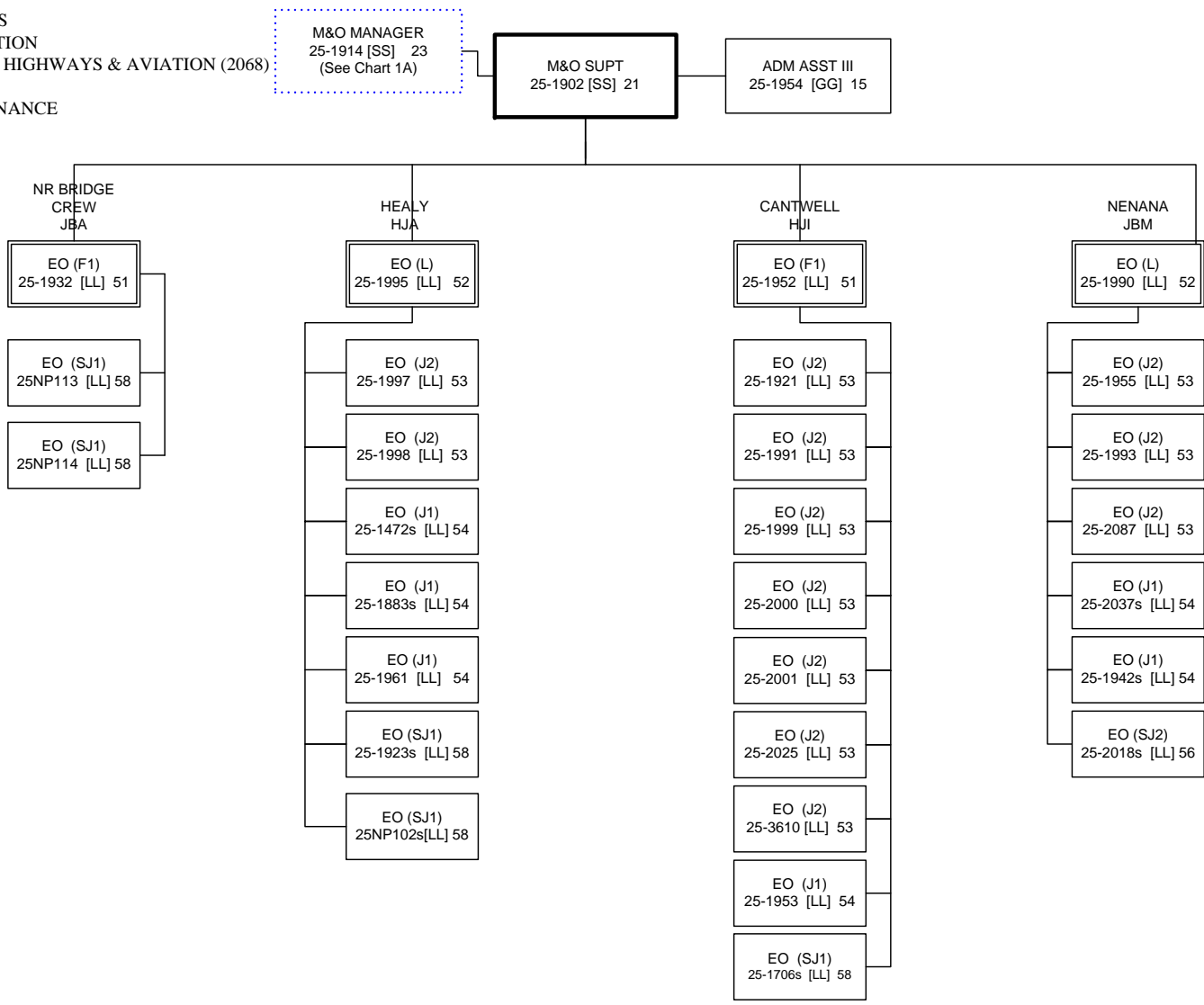


FY2012 GOVERNOR'S
HIGHWAYS & AVIATION
NORTHERN REGION HIGHWAYS & AVIATION (2068)
FAIRBANKS DISTRICT
REGIONAL MAINTENANCE
CHART 1B



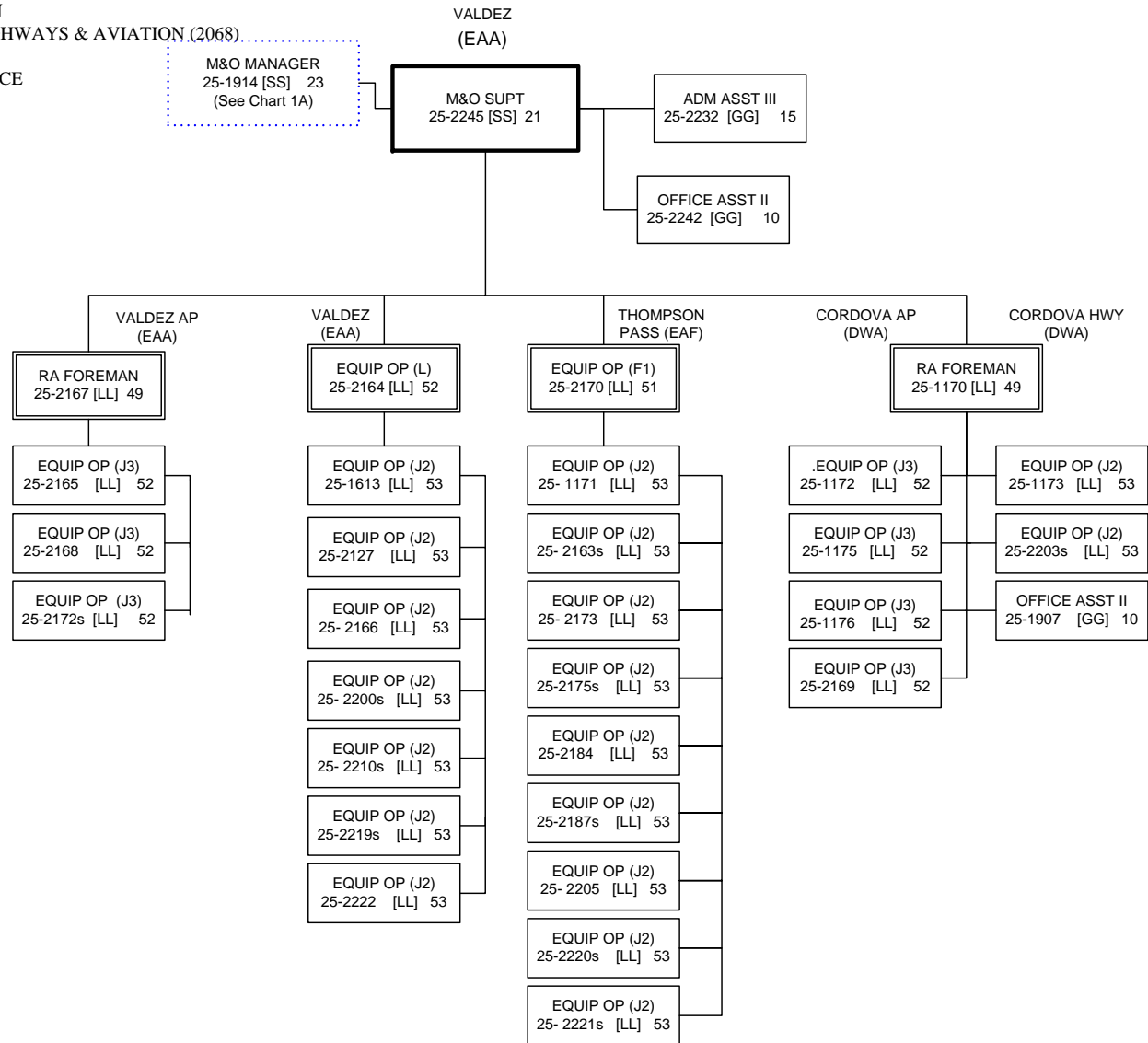
*MAINT: TRFC=TRAFFIC CONTROL EQUIPMENT SPEC
*EO=EQUIPMENT OPERATOR
*(SJ)=SUB-JOURNEY
*(J)=JOURNEY
*(F)=FOREMAN

FY2012 GOVERNOR'S
HIGHWAYS & AVIATION
NORTHERN REGION HIGHWAYS & AVIATION (2068)
DENALI DISTRICT
REGIONAL MAINTENANCE
CHART 1C

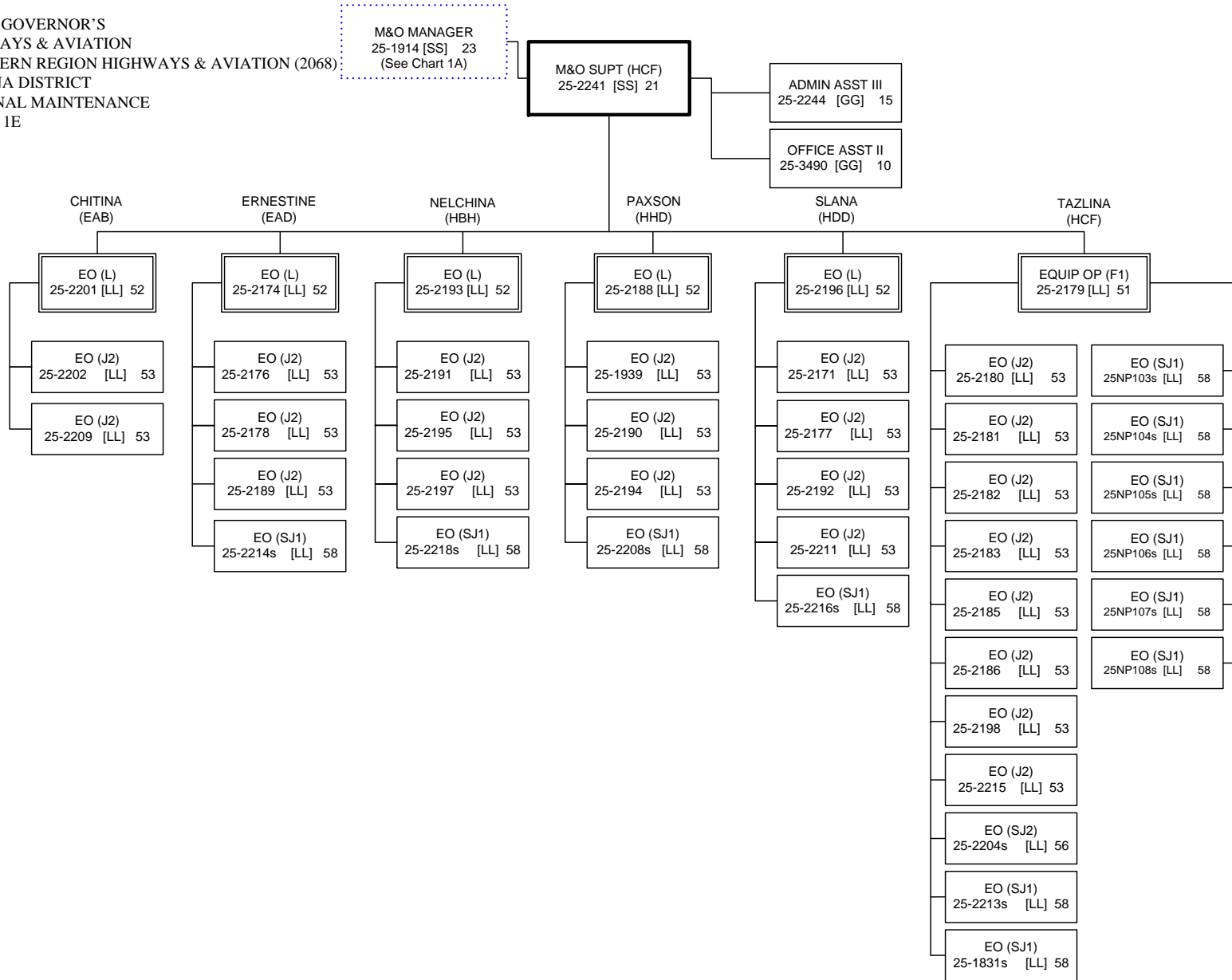


*MAINT: TRFC=TRAFFIC CONTROL EQUIPMENT SPEC
*EO=EQUIPMENT OPERATOR
*(SJ)=SUB-JOURNEY
*(J)=JOURNEY
*(F)=FOREMAN

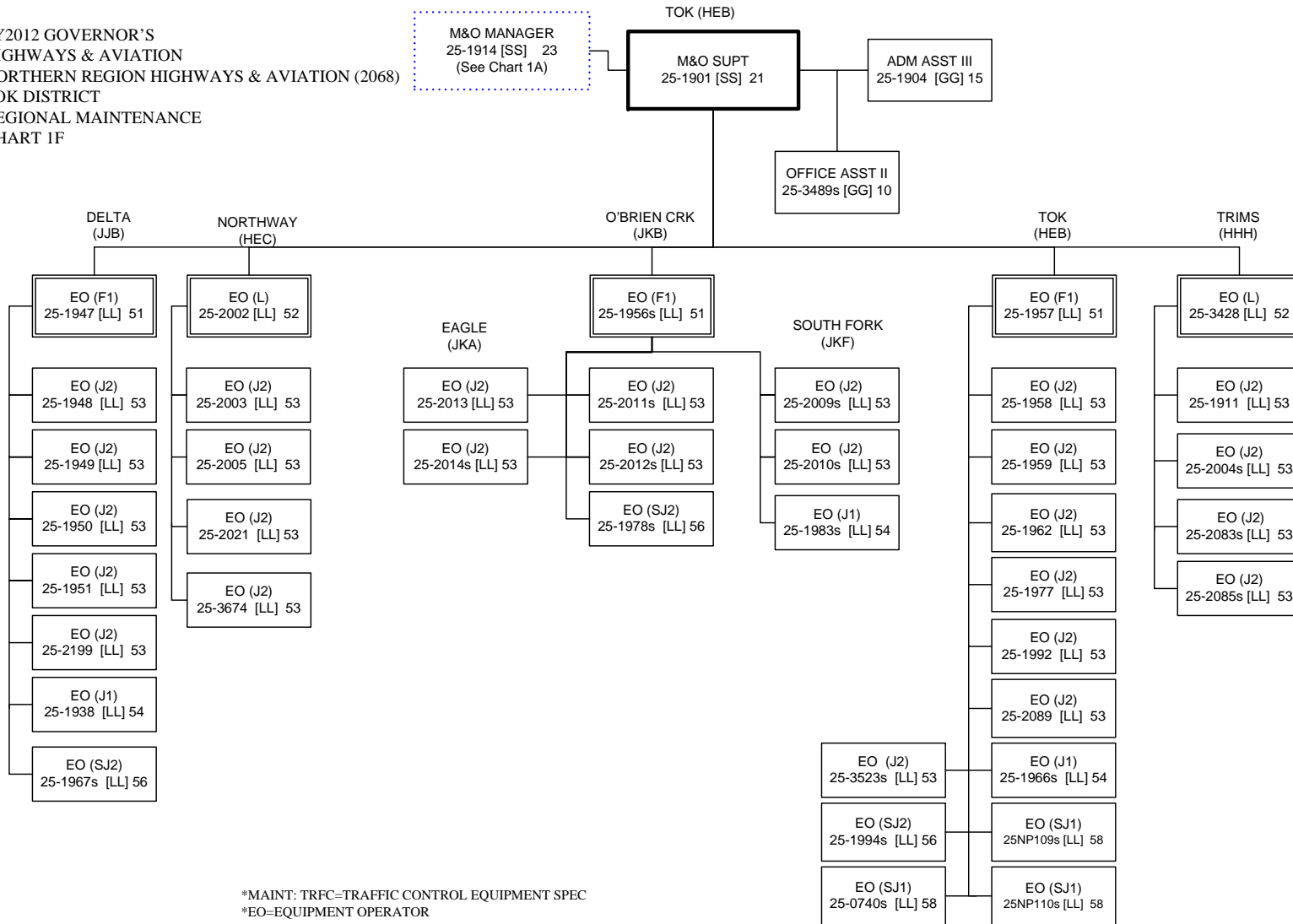
FY2012 GOVERNOR'S
HIGHWAYS & AVIATION
NORTHERN REGION HIGHWAYS & AVIATION (2068)
VALDEZ DISTRICT
REGIONAL MAINTENANCE
CHART 1D



FY2012 GOVERNOR'S
HIGHWAYS & AVIATION
NORTHERN REGION HIGHWAYS & AVIATION (2068)
TAZLINA DISTRICT
REGIONAL MAINTENANCE
CHART 1E

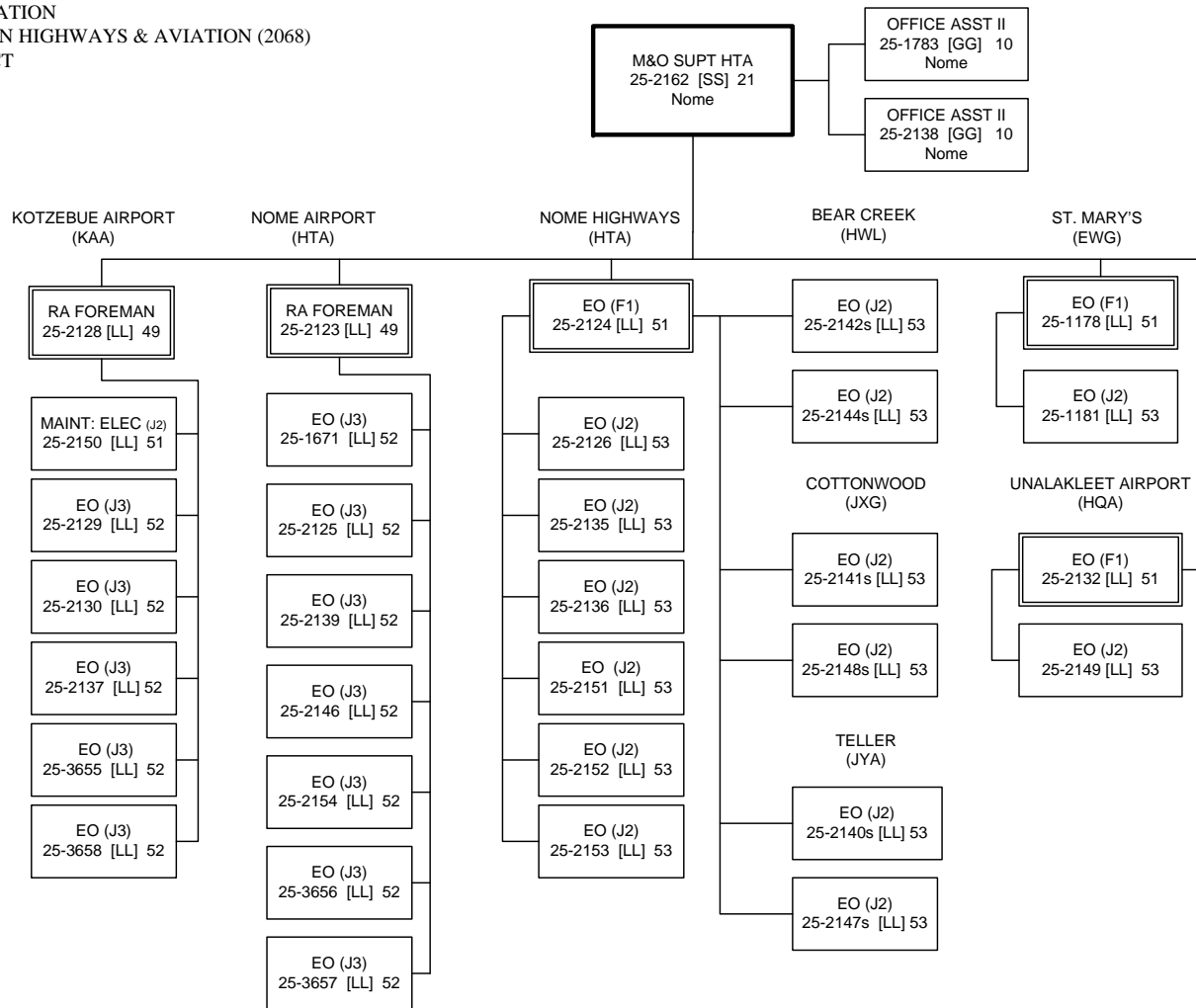


FY2012 GOVERNOR'S
HIGHWAYS & AVIATION
NORTHERN REGION HIGHWAYS & AVIATION (2068)
TOK DISTRICT
REGIONAL MAINTENANCE
CHART 1F



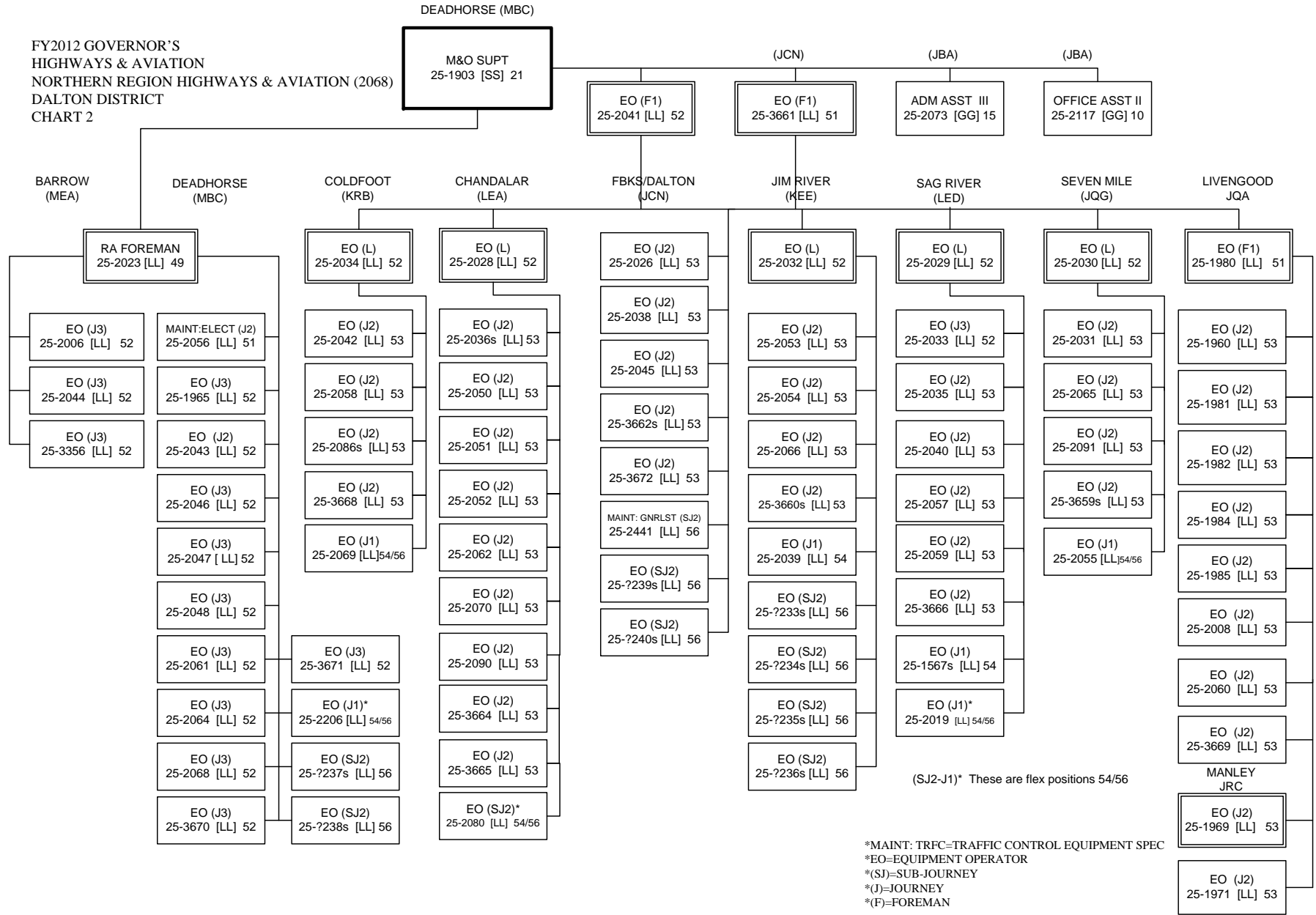
*MAINT: TRFC=TRAFFIC CONTROL EQUIPMENT SPEC
*EO=EQUIPMENT OPERATOR
*(SJ)=SUB-JOURNEY
*(J)=JOURNEY
*(F)=FOREMAN

FY2012 GOVERNOR'S
HIGHWAYS & AVIATION
NORTHERN REGION HIGHWAYS & AVIATION (2068)
WESTERN DISTRICT
CHART 4



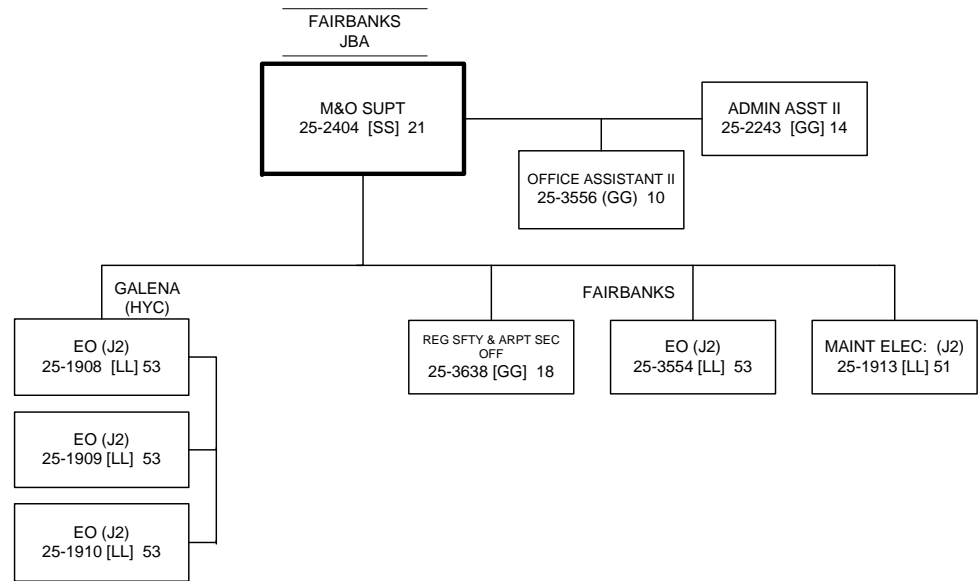
*MAINT: TRFC=TRAFFIC CONTROL EQUIPMENT SPEC
*EO=EQUIPMENT OPERATOR
*(SJ)=SUB-JOURNEY
*(J)=JOURNEY
*(F)=FOREMAN

FY2012 GOVERNOR'S
HIGHWAYS & AVIATION
NORTHERN REGION HIGHWAYS & AVIATION (2068)
DALTON DISTRICT
CHART 2



*MAINT: TRFC=TRAFFIC CONTROL EQUIPMENT SPEC
*EO=EQUIPMENT OPERATOR
*(S)=SUB-JOURNEY
*(J)=JOURNEY
*(F)=FOREMAN

FY2012 GOVERNOR'S
HIGHWAYS & AVIATION
NORTHERN REGION HIGHWAYS & AVIATION (2068)
RURAL AVIATION
CHART 3



*EO=EQUIPMENT OPERATOR
*(J)=JOURNEY
*(F)=FOREMAN