

DEPARTMENT OF TRANSPORTATION AND PUBLIC FACILITIES  
 NORTHERN REGION CONSTRUCTION AND CIP SUPPORT  
 FY2012 GOVERNOR'S REQUEST

NORTHERN REGION CONSTRUCTION & CIP SUPPORT	
Positions	Total
Full-Time	75
Seasonal	93
Non-Perm	10
<b>Total</b>	<b>178</b>

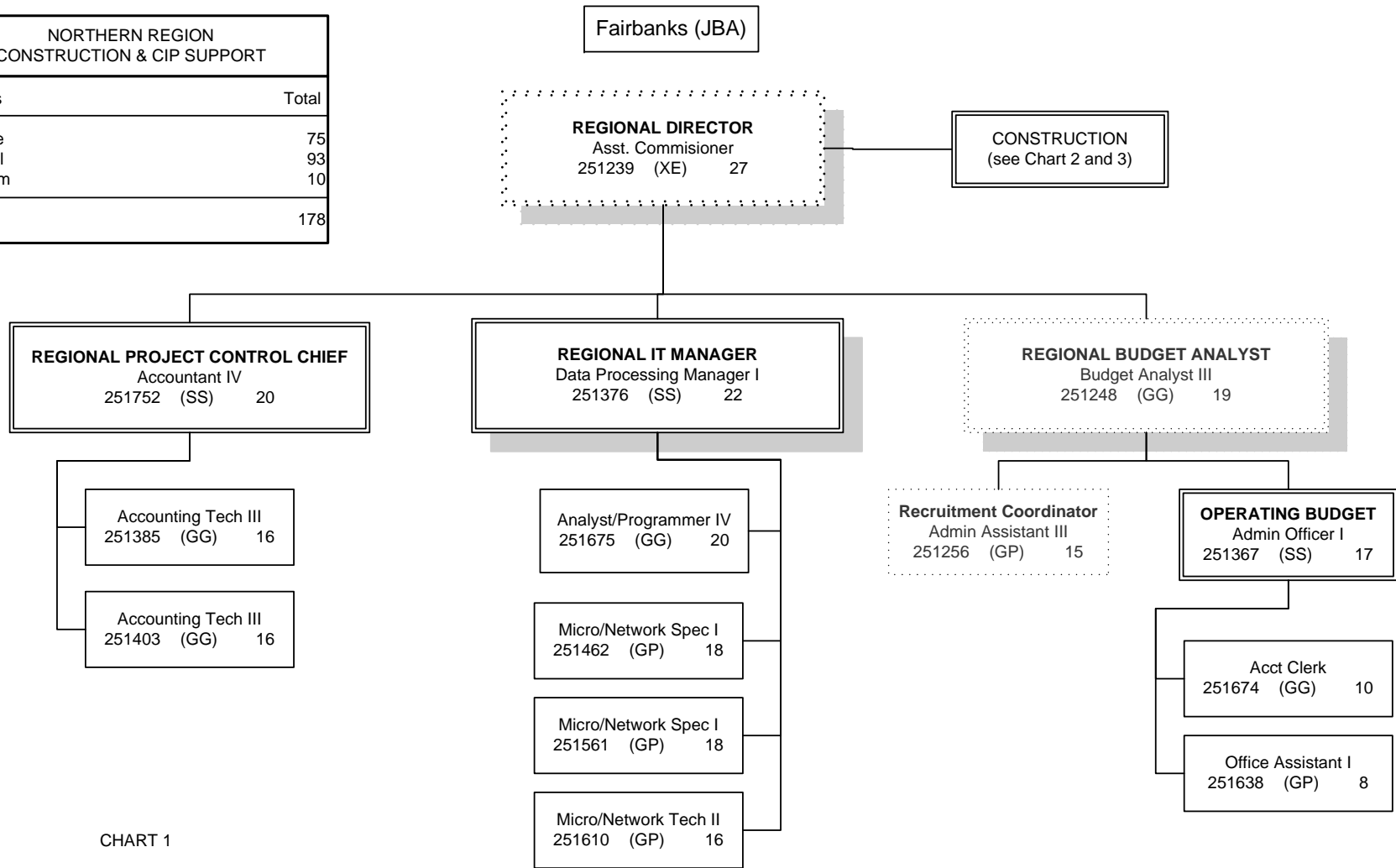
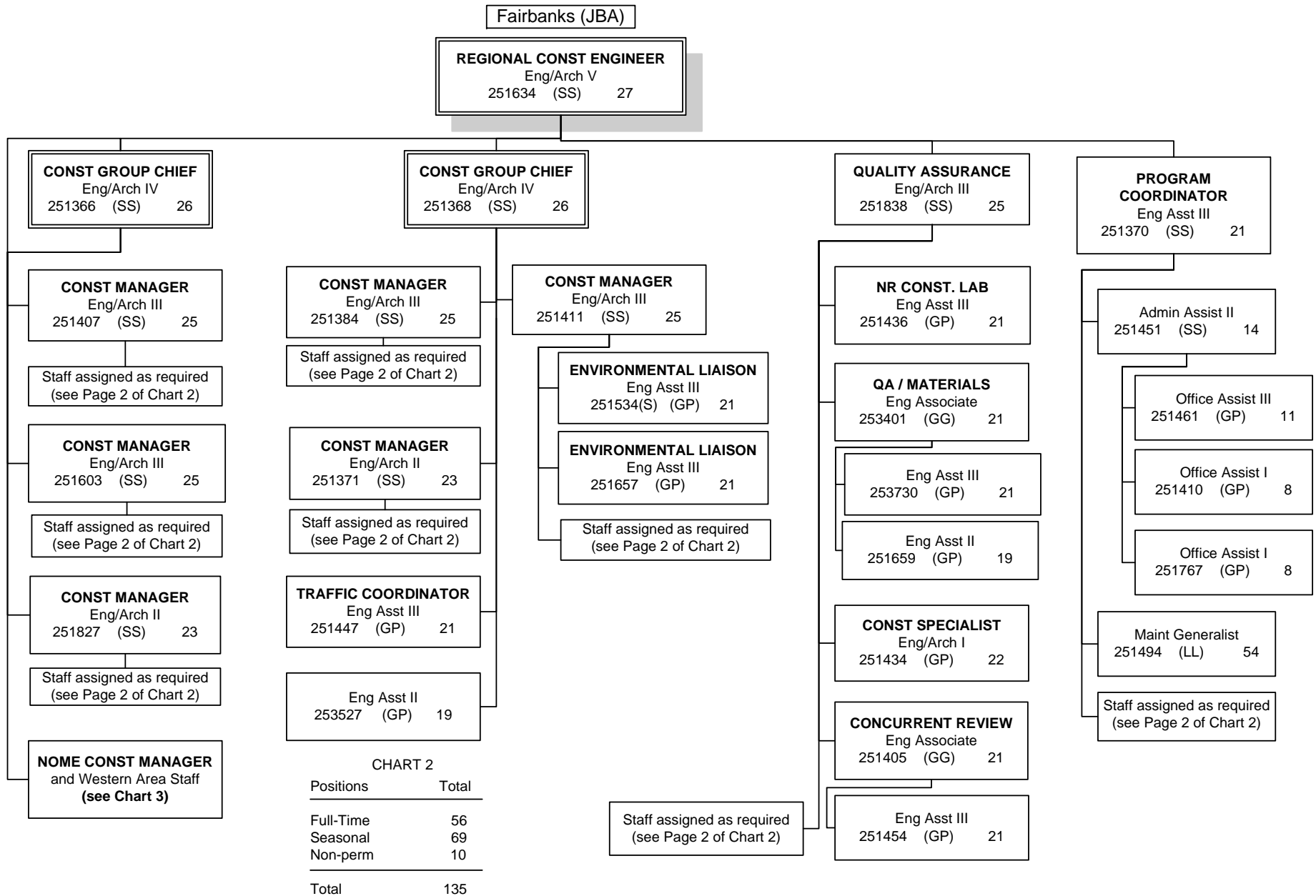


CHART 1

Positions	Total
Full-Time	18
Seasonal	0
<b>Total</b>	<b>11</b>

DEPARTMENT OF TRANSPORTATION AND PUBLIC FACILITIES  
 NORTHERN REGION CONSTRUCTION AND CIP SUPPORT  
 FY2012 GOVERNOR'S REQUEST



DEPARTMENT OF TRANSPORTATION AND PUBLIC FACILITIES  
 NORTHERN REGION CONSTRUCTION AND CIP SUPPORT  
 FY2012 GOVERNOR'S REQUEST

Fairbanks (JBA)

STAFF ASSIGNED AS REQUIRED

Eng Associate (GP/GG) 21
251387 251431 251573 251578(S) 251609 251633 251705 251769 251782(S)** 251797 253402

Eng Asst III (GP) 21
251412 251639 251656(S) 251658 251765 251781 251784(S) 251796 251869(S) 253731 253732

Eng Asst II (GP) 19
251579(S)
EA I/II FLEX (EIT) (GP) 17/19
253405 253406

EA I/II Flex (GP/GG) 17/19
251443 251449 251455(S) 251457 251459 251473(S) 251541(S) 251548(S) 251818(S)

Eng Technician (SJ2) (LL) 57
251502(S) 251505(S) 251507(S) 251508(S) 251511(S) 251515(S) 251518(S) 251519(S) 251520(S) 251525(S) 251566(S) 251569(S) 251596(S) 251684(S) 251688(S) 251689(S) 251691(S)*** 251693(S) 251697(S) 251700(S) 251701(S) 251710(S) 251745(S) 251880(S)

EA I/II Flex (GP/GG) 17/19 (Cont.)
251555 251557(S) 251580 251582(S) 251625(S) 251632(S) 251637 251660(S) 251661(S) 251742(S) 251761(S) 253521 253525 253526 253528

Eng Technician (J) (LL) 54
251464(S) 251465(S) 251467(S)++ 251469(S) 251474(S) 251479(S) 251524(S) 251667(S) 251715(S) 251748(S) 251758(S) 251850(S)** 251852(S) 251862(S)

Eng Technician (SJ3) (LL) 55
251480(S) 251484(S) 251485(S) 251486(S) 251492(S) 251615(S) 251678(S) 251762(S) 251854(S) 251857(S) 251875(S)++

Legend
J = Journey
SJ = SubJourney

\*\*Positions assigned to Valdez (EAA)  
 \*\*\* Position resides in Deadhorse (MBC), but assigned to Fairbanks project managers

++Positions assigned to Delta Junction

Fairbanks (JBA)

STAFF ASSIGNED AS REQUIRED

**NON PERMANENT  
POSITIONS  
Assigned as needed**

Eng Tech SJ II  
25-NP077  
25IN1005 (LL) 57

Eng Tech SJ I  
25-NP081  
25IN1009 (LL) 59

Eng Tech SJ I  
25-NP084  
25IN1012 (LL) 59

Eng Tech SJ II  
25-NP078  
25IN1006 (LL) 57

Eng Tech SJ I  
25-NP082  
25IN1010 (LL) 59

Eng Tech SJ I  
25-NP085  
25IN1013 (LL) 59

Eng Tech SJ II  
25-NP079  
25IN1007 (LL) 57

Eng Tech SJ I  
25-NP083  
25IN1011 (LL) 59

Eng Tech SJ I  
25-NP086  
25IN1014 (LL) 59

Eng Tech SJ II  
25-NP080  
25IN1008 (LL) 57

Legend  
J = Journey  
SJ = SubJourney

DEPARTMENT OF TRANSPORTATION AND PUBLIC FACILITIES  
 NORTHERN REGION CONSTRUCTION AND CIP SUPPORT  
 FY2012 GOVERNOR'S REQUEST

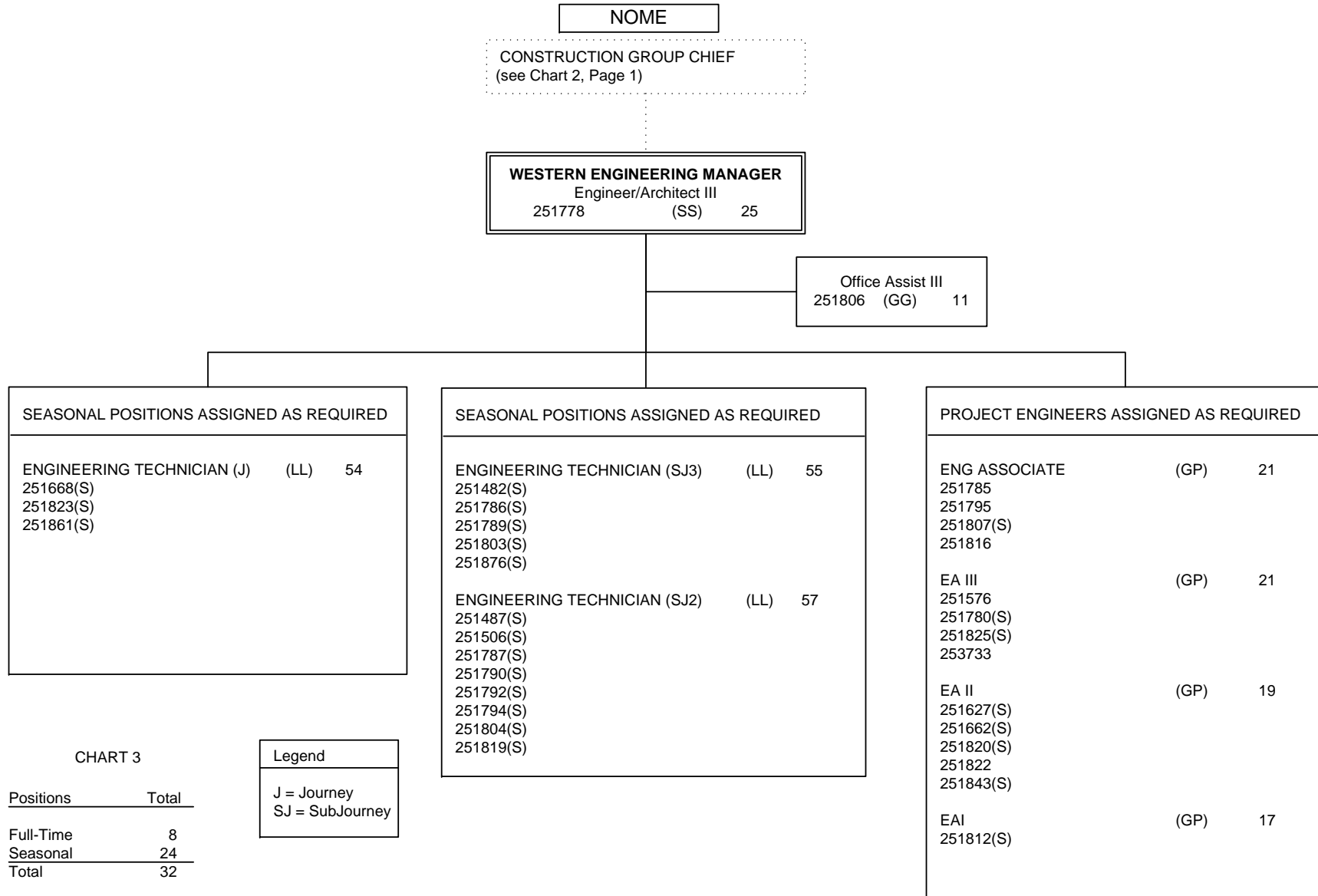


CHART 3

Positions	Total
Full-Time	8
Seasonal	24
<b>Total</b>	<b>32</b>

Legend
J = Journey
SJ = SubJourney