

SOUTHEAST REGION DESIGN & ENGINEERING SERVICES	
POSITIONS	TOTAL
FULL-TIME	80
SEASONAL	6
<b>TOTAL</b>	<b>86</b>

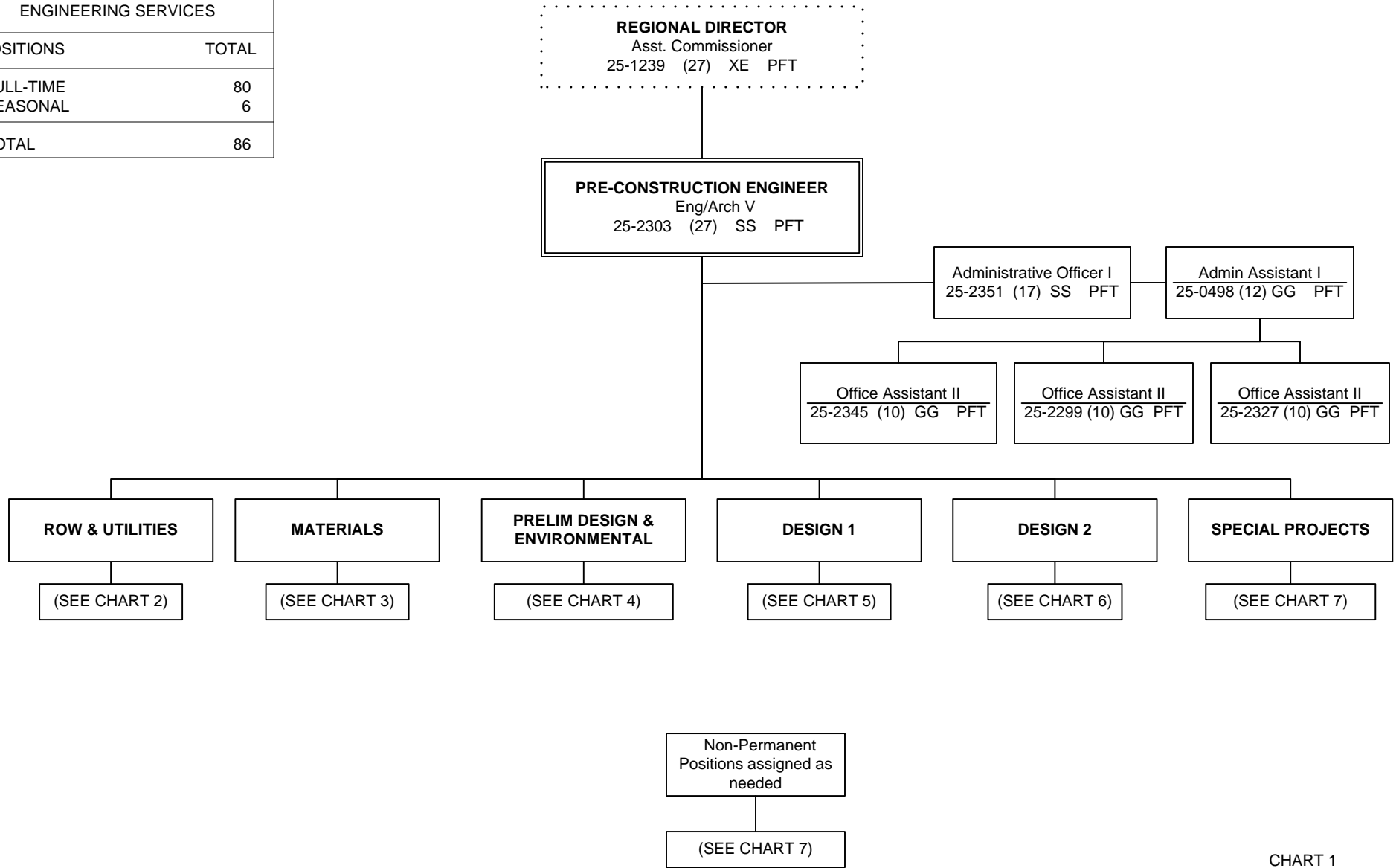


CHART 1

Positions	Total
Full-Time	6
Seasonal	0
<b>Total</b>	<b>6</b>

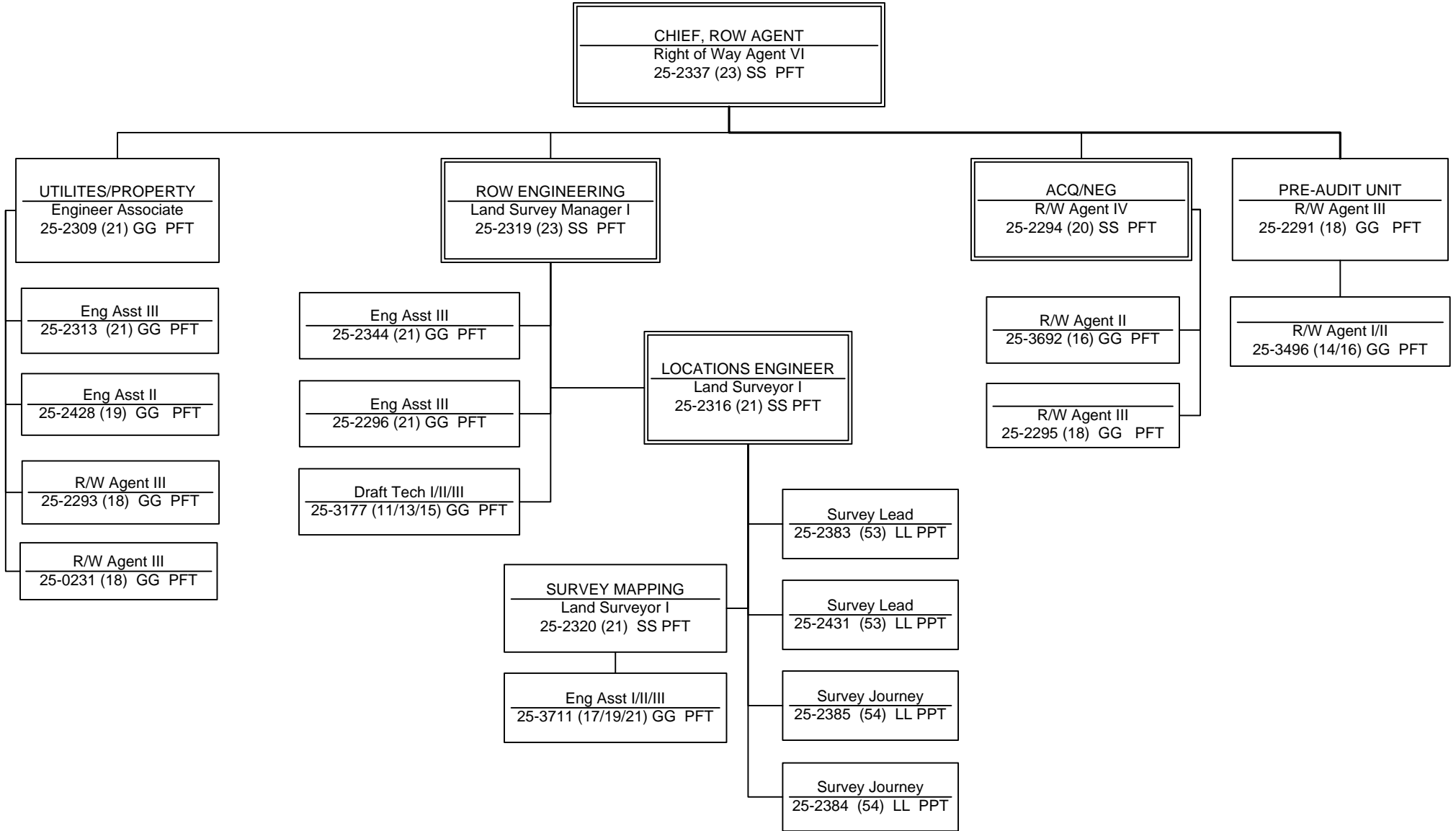


CHART 2

Positions	Total
Full-Time	18
Seasonal	4
<b>Total</b>	<b>22</b>

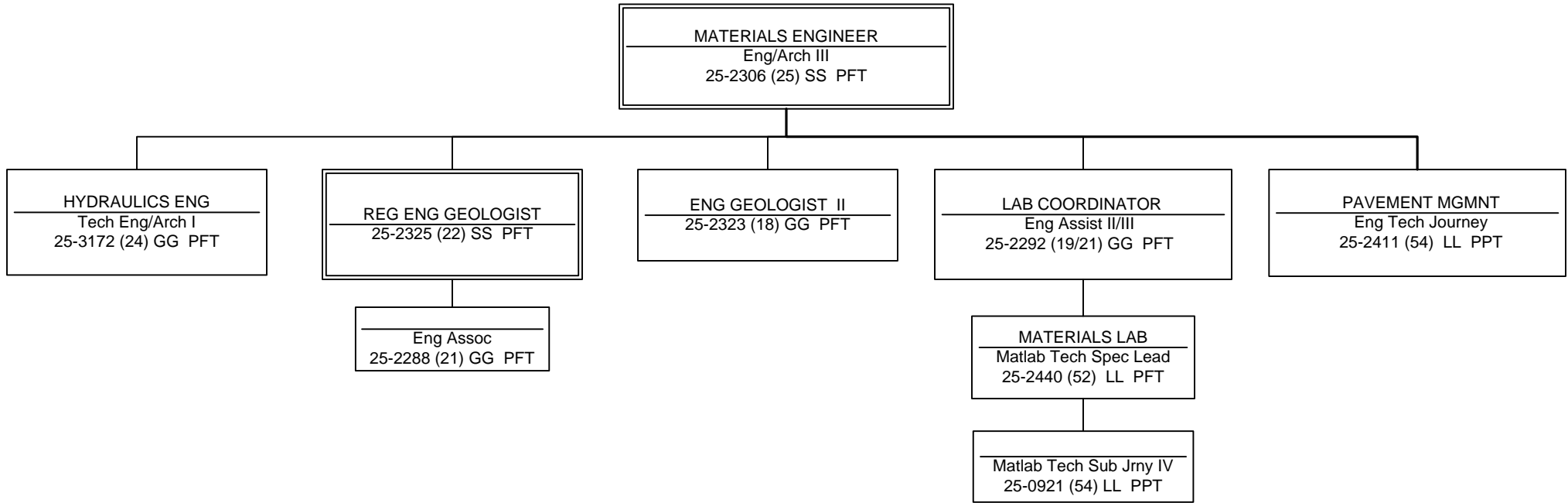


CHART 3

Positions	Total
Full-Time	8
Seasonal	1
<b>Total</b>	<b>9</b>

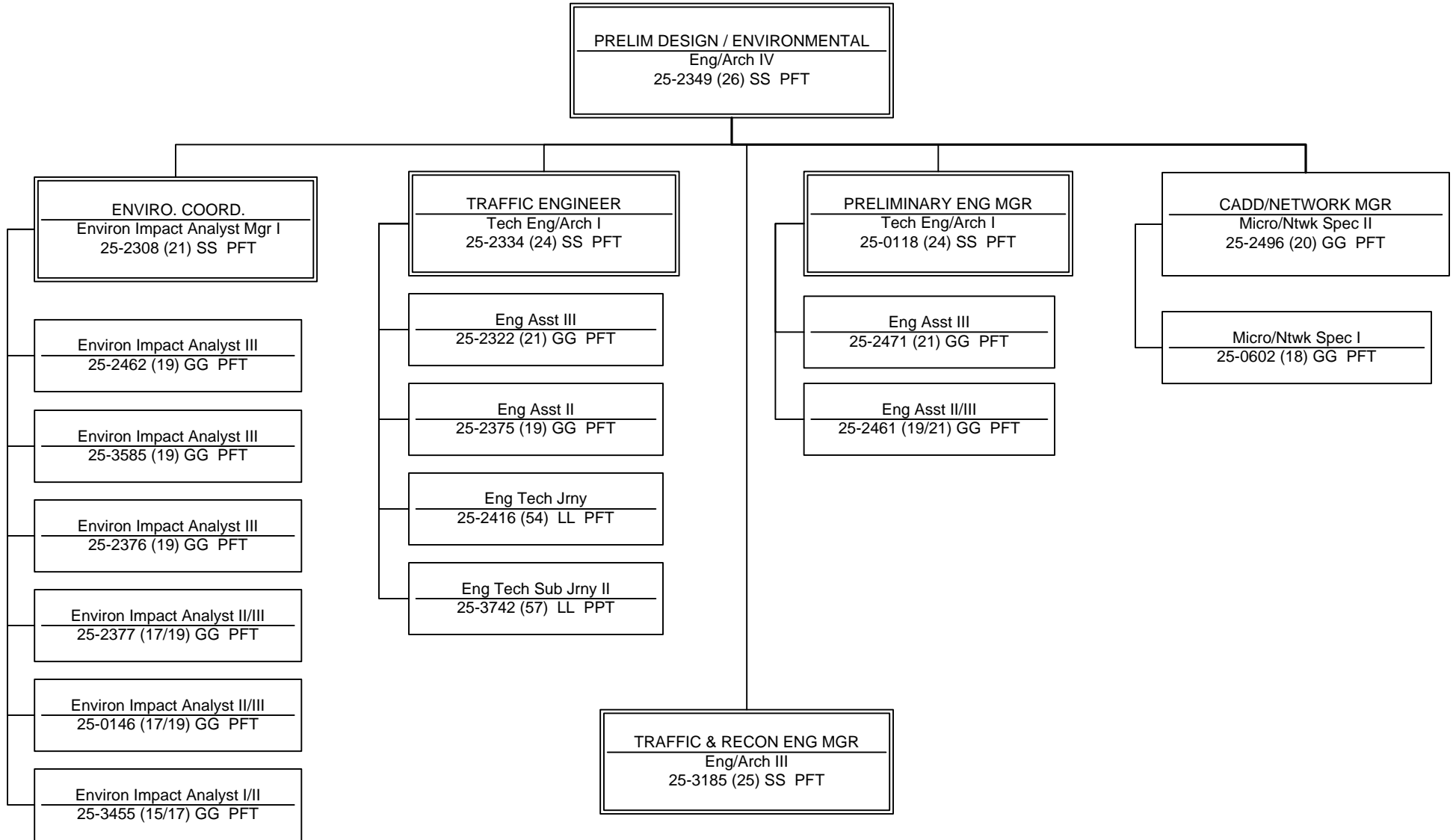


CHART 4

Positions	Total
Full-Time	18
Seasonal	1
<b>Total</b>	<b>19</b>

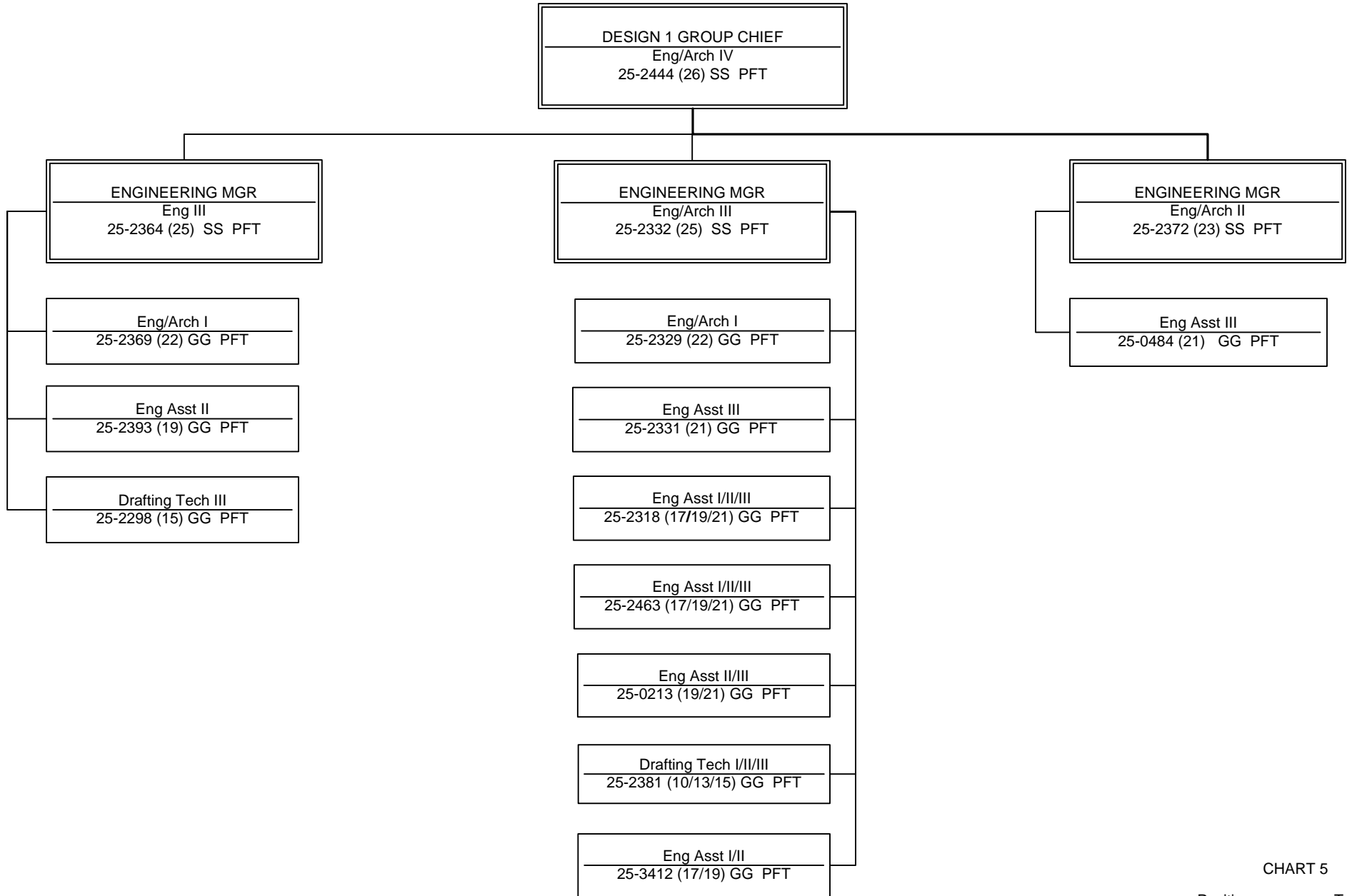


CHART 5

Positions	Total
Full-Time	15
Seasonal	0
<b>Total</b>	<b>15</b>

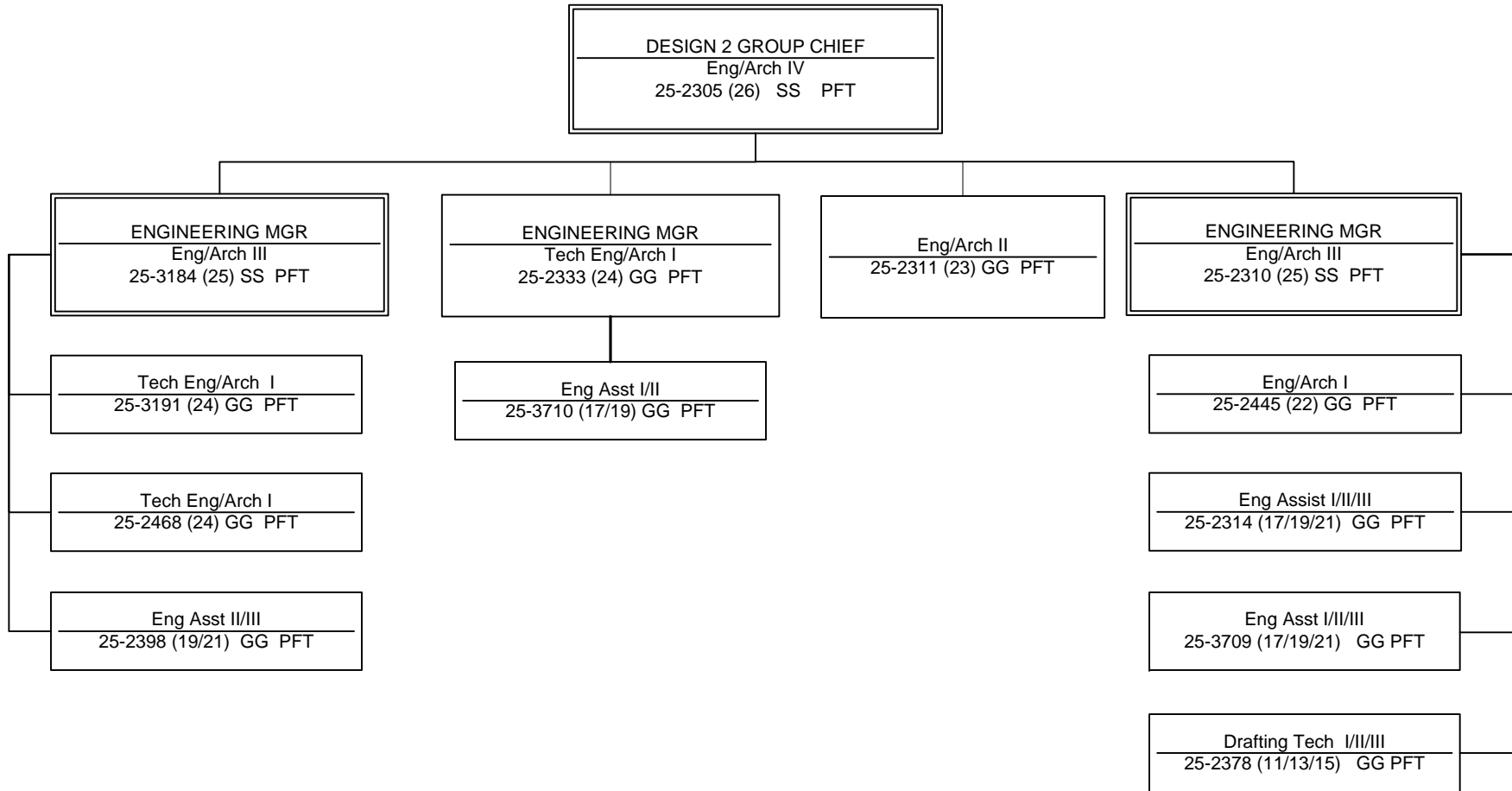
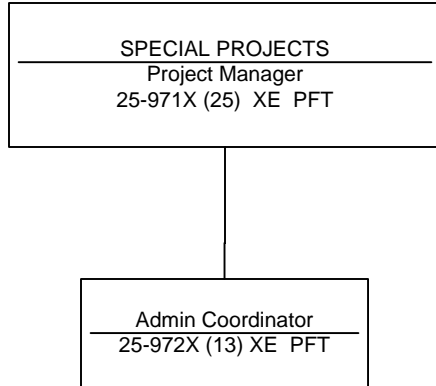


CHART 6

Positions	Total
Full-Time	13
Seasonal	0
<b>Total</b>	<b>13</b>



**NONPERMANENT POSITIONS – Assigned As Needed**

College Intern I/II/III/IV  
 -----  
 25-N07058 (08/09/10/12) EE NP

College Intern I/II/III/IV  
 -----  
 25-NP044 (08/09/10/12) EE NP

College Intern I/II/III/IV  
 -----  
 25-N07060 (08/09/10/12) EE NP

College Intern I/II/III/IV  
 -----  
 25-NP048 (08/09/10/12) EE NP

College Intern I/II/III/IV  
 -----  
 25-N06072 (08/09/10/12) EE NP

College Intern I/II/III/IV  
 -----  
 25-NP049 (08/09/10/12) EE NP

College Intern I/II/III  
 -----  
 25-IN1107 (08/09/10) EE NP

College Intern I/II/III/IV  
 -----  
 25-IN1109 (08/09/10/12) EE NP

CHART 7

Positions	Total
Full-Time	2
Seasonal	0
<b>Total</b>	<b>2</b>