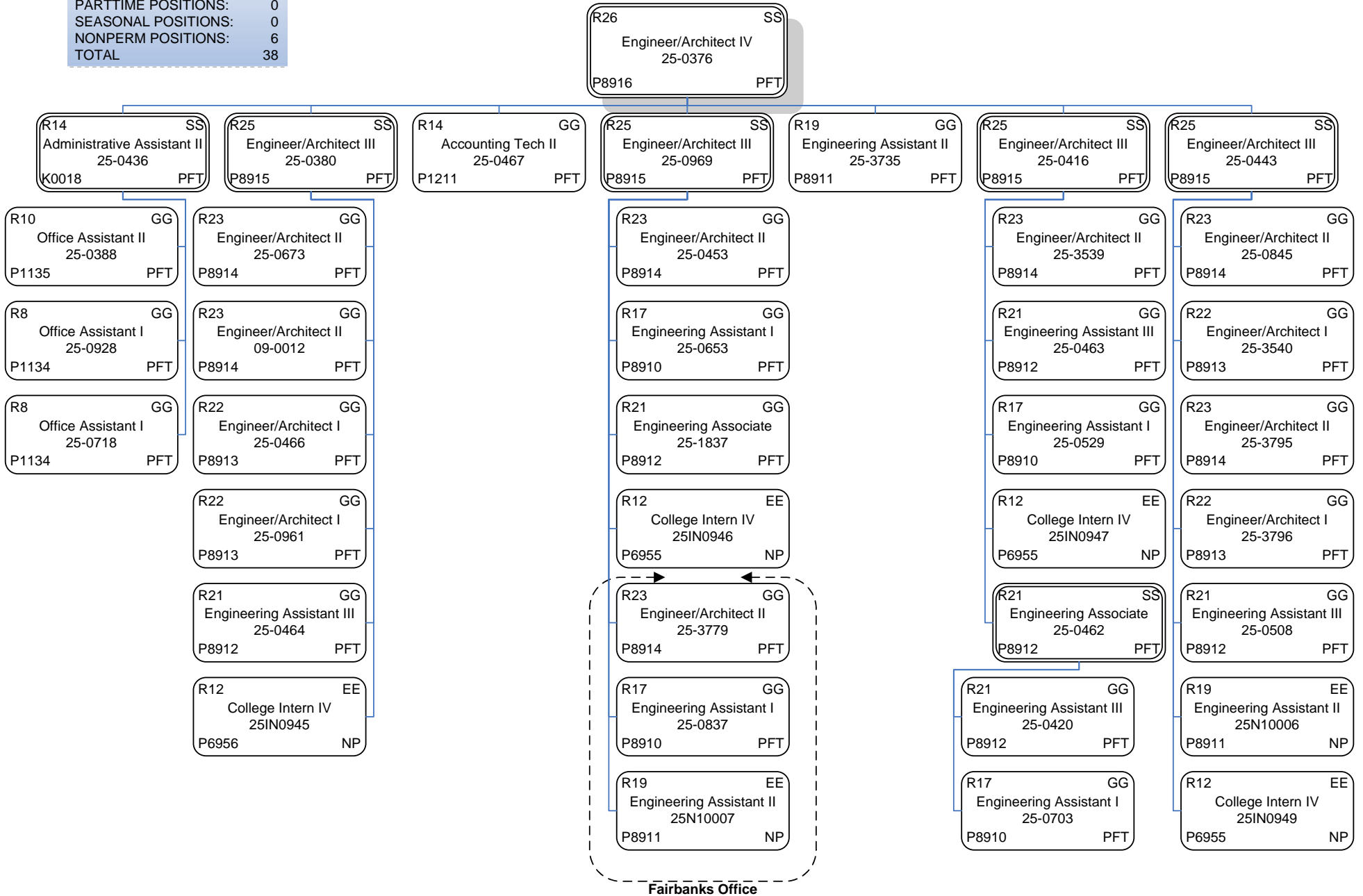


FY12 GOVERNOR'S REQUEST
 RDU: DESIGN AND CONSTRUCTION
 COMPONENT: STATEWIDE PUBLIC FACILITIES

COMPONENT TOTAL:	
FULLTIME POSITIONS:	32
PARTTIME POSITIONS:	0
SEASONAL POSITIONS:	0
NONPERM POSITIONS:	6
TOTAL	38



Fairbanks Office