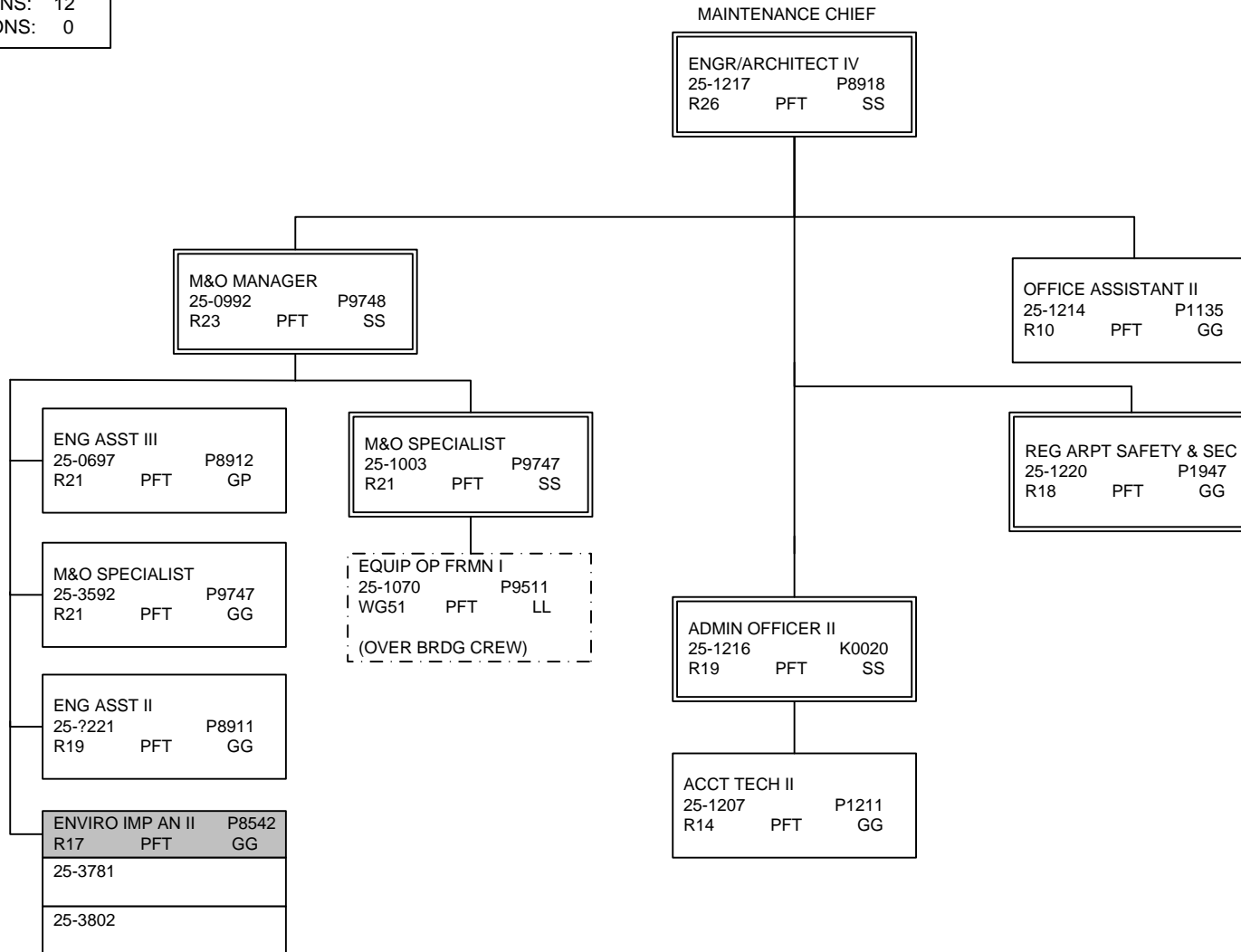


**FY12 GOVERNOR'S OPERATING BUDGET**  
**RDU: HIGHWAYS & AVIATION**  
**COMPONENT: CENTRAL REGION HIGHWAYS & AVIATION (564)**

COMPONENT TOTAL:	232
FULLTIME POSITIONS:	206
PARTTIME POSITIONS:	10
NONPERM POSITIONS:	16
PAGE TOTAL:	12
FULLTIME POSITIONS:	12
PARTTIME POSITIONS:	0

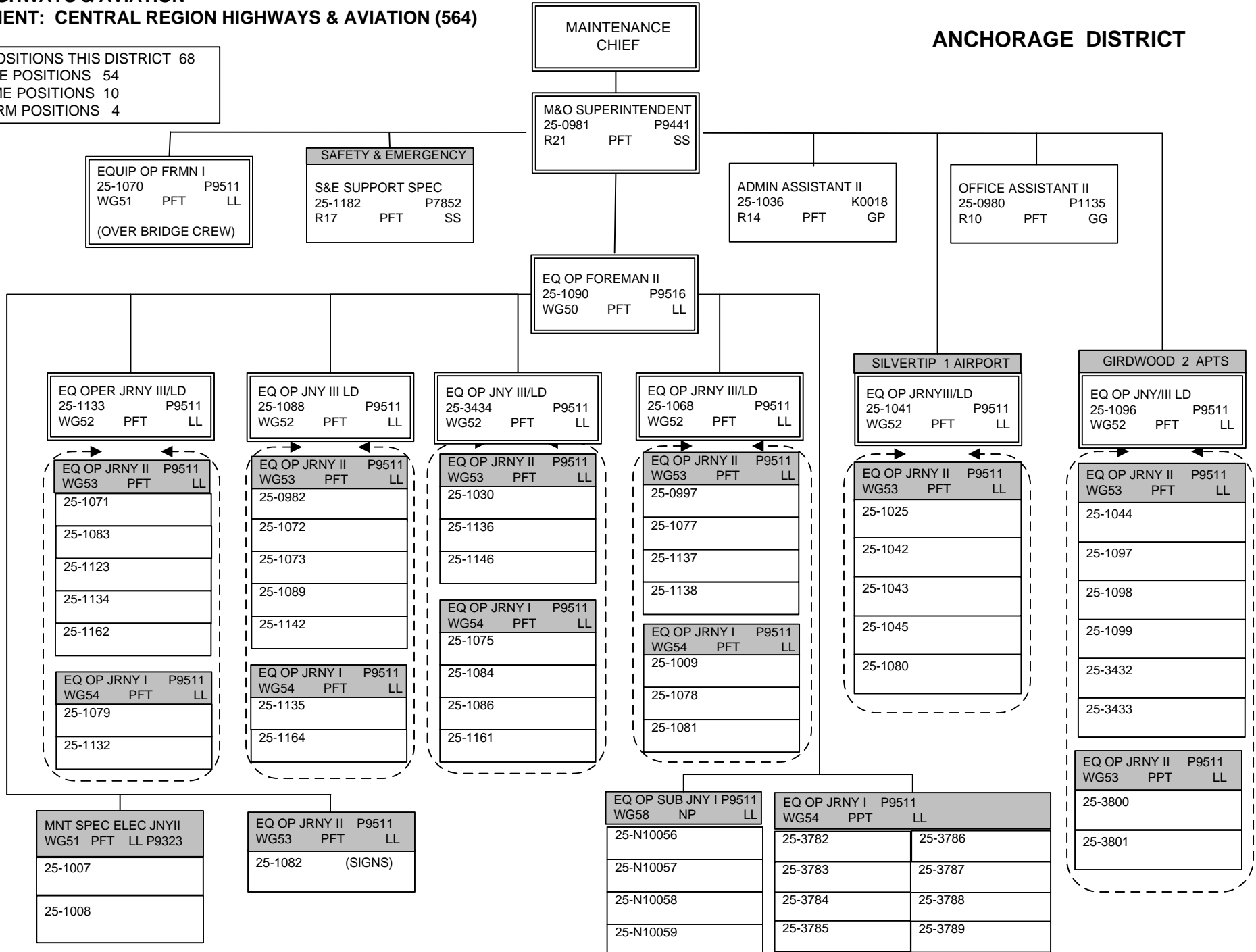
**M&O ADMINISTRATION**



**FY12 GOVERNOR'S OPERATING BUDGET**  
**RDU: HIGHWAYS & AVIATION**  
**COMPONENT: CENTRAL REGION HIGHWAYS & AVIATION (564)**

TOTAL POSITIONS THIS DISTRICT 68  
 FULL TIME POSITIONS 54  
 PART-TIME POSITIONS 10  
 NON- PERM POSITIONS 4

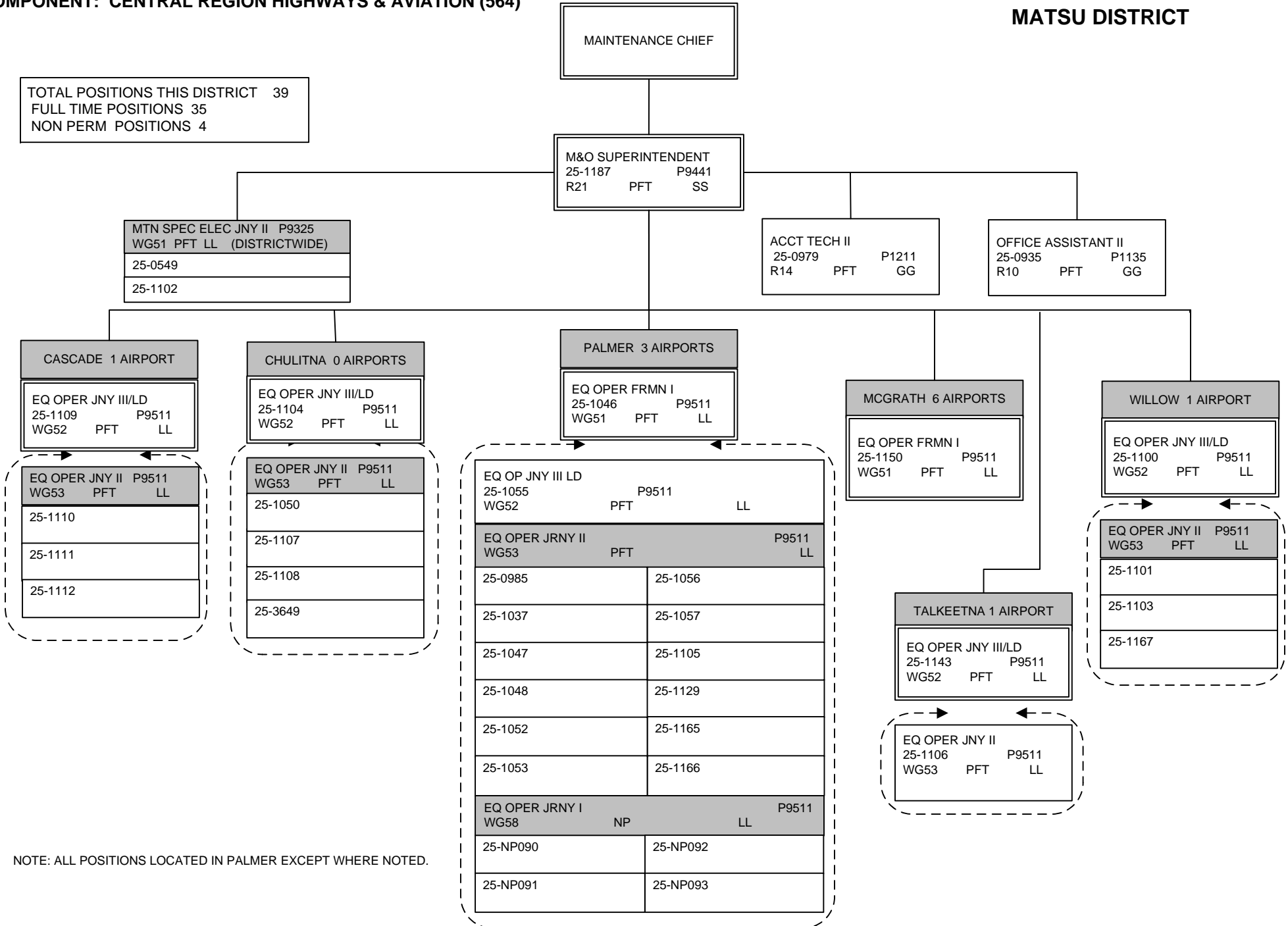
**ANCHORAGE DISTRICT**



**FY12 GOVERNOR'S OPERATING BUDGET**  
**RDU: HIGHWAYS & AVIATION**  
**COMPONENT: CENTRAL REGION HIGHWAYS & AVIATION (564)**

**MATSU DISTRICT**

TOTAL POSITIONS THIS DISTRICT 39  
 FULL TIME POSITIONS 35  
 NON PERM POSITIONS 4



NOTE: ALL POSITIONS LOCATED IN PALMER EXCEPT WHERE NOTED.

**FY12 GOVERNOR'S OPERATING BUDGET**  
**RDU: HIGHWAYS & AVIATION**  
**COMPONENT: CENTRAL REGION HIGHWAYS & AVIATION (564)**

**PENINSULA DISTRICT**

**MAINTENANCE CHIEF**

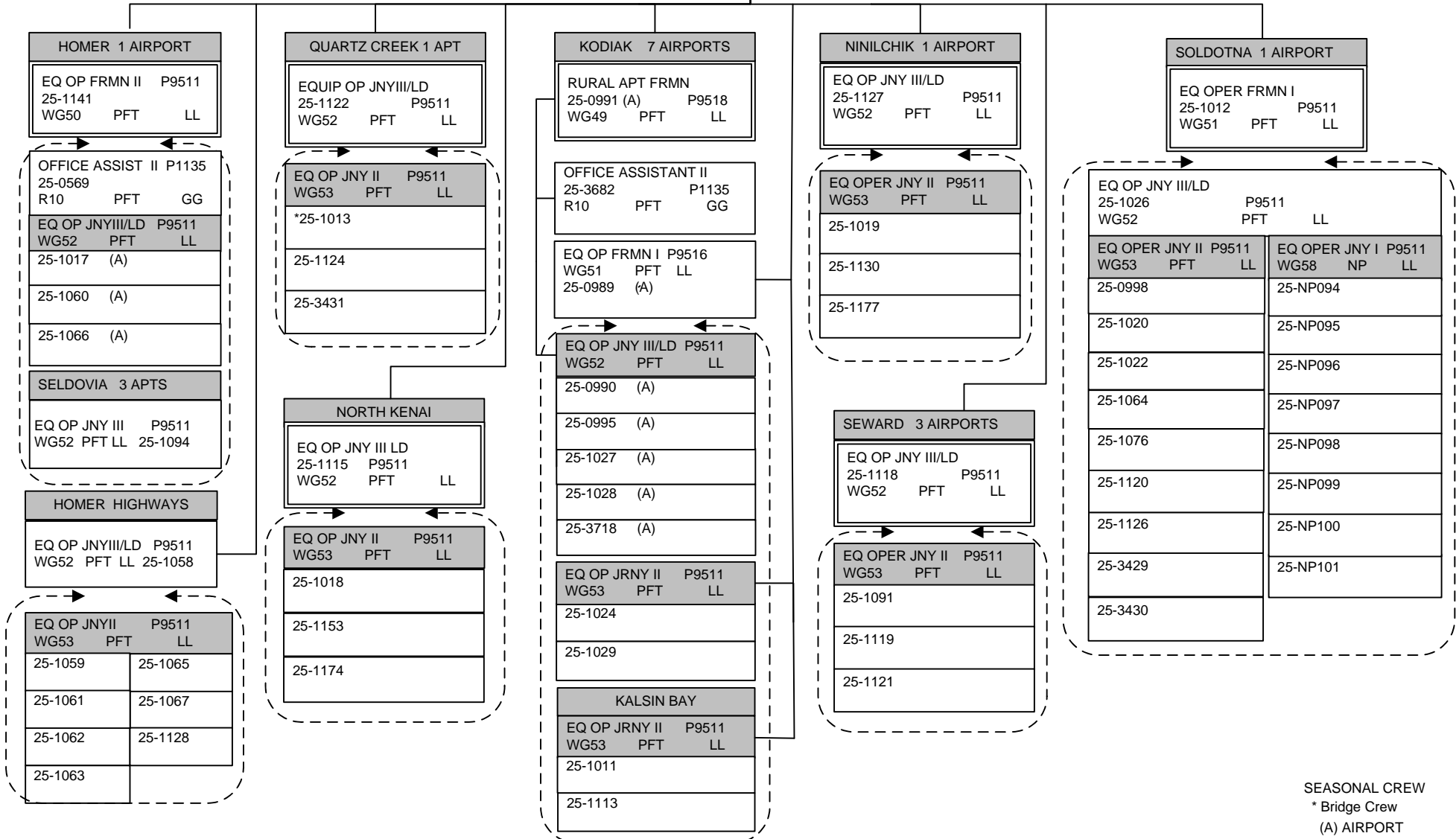
**M&O SUPERINTENDENT**  
 25-0977 P9441  
 R21 PFT SS

TOTAL POSITIONS THIS DISTRICT 66  
 FULL TIME POSITIONS 58  
 NON PERM POSITIONS 8

MTN SPEC ELEC JNY II P9325  
 WG51 PFT LL (DISTRICTWIDE)  
 25-0565  
 25-1021

ACCT TECH II  
 25-1010 P1211  
 R14 PFT GG

OFFICE ASSISTANT II  
 25-0983 P1135  
 R10 PFT GG



SEASONAL CREW  
 \* Bridge Crew  
 (A) AIRPORT

**FY12 GOVERNOR'S OPERATING BUDGET**  
**RDU: HIGHWAYS & AVIATION**  
**COMPONENT: CENTRAL REGION HIGHWAYS & AVIATION (564)**

**SOUTHWEST DISTRICT**

TOTAL POSITIONS THIS DISTRICT 47  
 FULL TIME POSITIONS 47  
 SEASONAL POSITIONS 0

MAINTENANCE CHIEF

M&O SUPERINTENDENT  
 25-0974 P9441  
 R21 PFT SS

ADMIN ASSISTANT II  
 25-1169 K0018  
 R14 PFT GG

OFFICE ASSISTANT II  
 25-1031 P1135  
 R10 PFT GG

**ANIAK 7 AIRPORTS**  
 EQ OP FOREMAN I (A)  
 25-1000 P9511  
 WG51 PFT LL

**COLD BAY 5 AIRPORTS**  
 RURAL ARPT FRMN (A)  
 25-1032 P9518  
 WG49 PFT LL

**DILLINGHAM 12 APTS**  
 RURAL ARPT FRMN (A)  
 25-1038 P9518  
 WG49 PFT LL

**ILIAMNA 5 AIRPORTS**  
 EQ OP FOREMAN II (A)  
 25-1147 P9517  
 WG50 PFT LL

**KING SALMON 12 APTS**  
 RURAL ARPT FRMN (A)  
 25-0996 P9518  
 WG49 PFT LL

**UNALASKA 2 APTS**  
 RURAL ARPT FRMN (A)  
 25-1095 P9518  
 WG49 PFT LL

EQ OP JRNY II (A)  
 25-1152 P9511  
 WG53 PFT LL

EQ OP JNY III/LD P9511  
 WG52 PFT LL  
 25-1033 (A)  
 25-3474 (A)  
 25-3482 (A)

OFFICE ASSISTANT II (A)  
 25-1156 P1135  
 R10 PFT GG

EQ OP JNY III/LD P9511  
 WG52 PFT LL  
 25-1148 (A)  
 25-1159 (A)

OFFICE ASSISTANT III (A)  
 25-0993 K0077  
 R11 PFT GG

EQ OP JNY III/LD P9511  
 WG52 PFT LL  
 25-1184 (A)  
 25-3719 (A)

**BETHEL 27 AIRPORTS**  
 APT OPER SPEC P1964  
 25-3573 R19 PFT SS

OFFICE ASSIST II P1135  
 25-1185 R10 PFT GG

RURAL APT FRMN P9518  
 25-1004 WG49 PFT LL (A)

MTN SPC ELEC JNY II P9325  
 25-1183 WG51 PFT LL (A)  
 EQ OP JNY III/LD P9511  
 WG52 PFT LL  
 25-1001 (A) 25-1035  
 25-1005 25-1085  
 25-1006 (A) 25-3639 (A)  
 25-1015 (A) 25-3640 (A)

EQ OP JNY III/LD P9511  
 WG52 PFT LL  
 25-1039  
 25-1087 (A)  
 25-1144 (A)  
 25-1145 (A)  
 25-3717 (A)

MTN SPC ELEC JNY II  
 25-1051 P9325  
 WG51 PFT LL

EQ OP JNY III/LD P9511  
 WG52 PFT LL  
 25-0984 (A)  
 25-0986 (A)  
 25-0994 (A)  
 25-0999 (A)  
 25-1139 (A)  
 25-1140 (A)  
 25-1179

**ADAK**  
 RURAL ARPT FRMN  
 25-3686 P9518 (A)  
 WG49 PFT LL

EQ OP JNY III/LD P9511  
 WG52 PFT LL  
 25-3687  
 25-3688