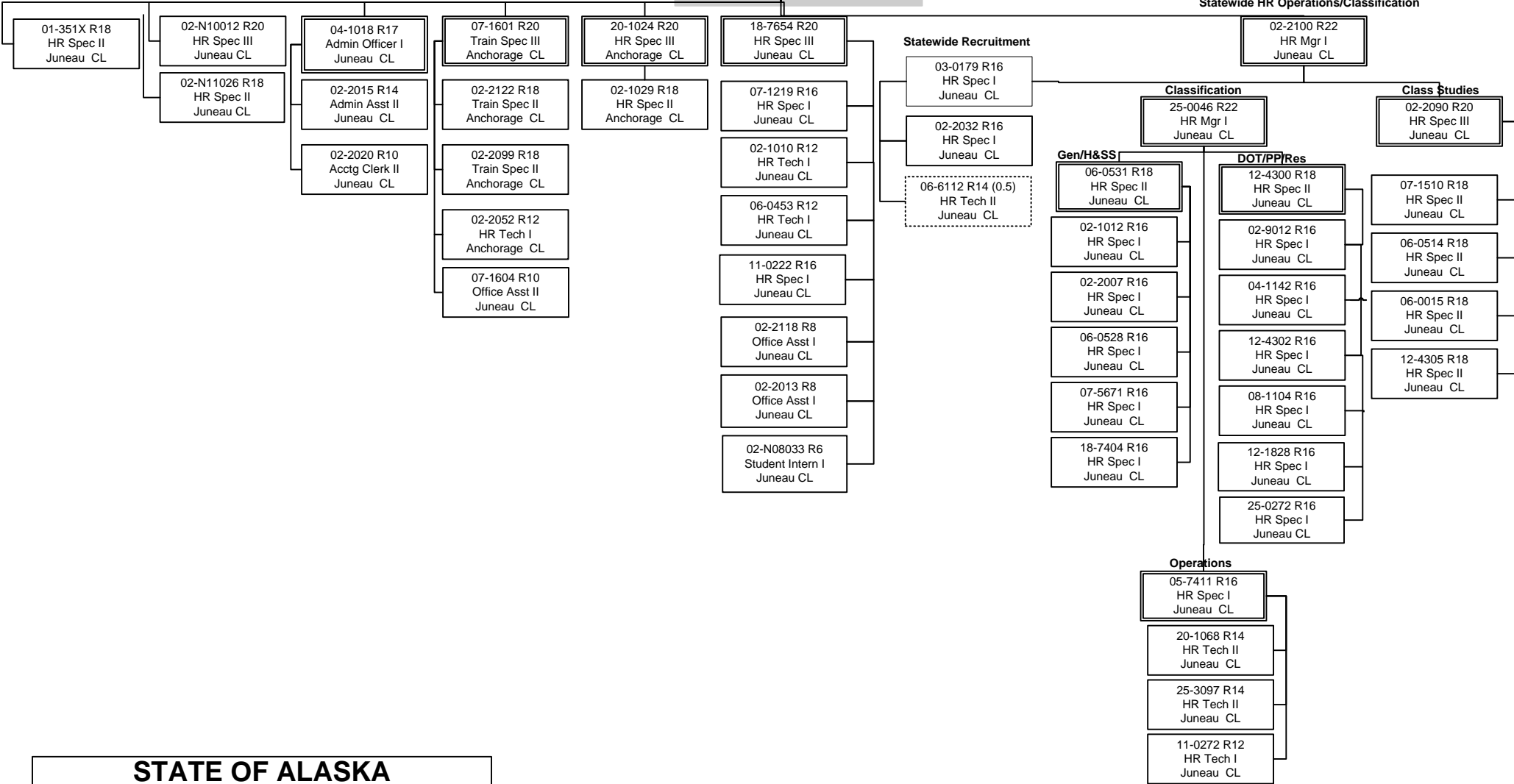


02-2040 R23
Labor Relations Mgr
Juneau PX

02-2001 R27
Division Director
Juneau PX
(0.50 DOP / 0.50 LR)

02-2108 R23
HR Mgr II
Juneau CL

Statewide HR Operations/Classification



**STATE OF ALASKA
DEPARTMENT OF
ADMINISTRATION
DIVISION OF PERSONNEL
Director's Office/Statewide HR
Operations/Classification**

POSITION COUNT	
PX	2
CL	181
TOTAL	183

02-2108 R23
HR Mgr II
Juneau CL

21-2003 R18
HR Spec II
Anchorage CL

**General Agencies
Service Center**

**DOT&PF
Service Center**

**H&SS
Service Center**

18-7053 R22
HR Mgr I
Juneau CL

02-2033 R22
HR Mgr I
Juneau CL

25-3345 R10
Office Asst II
Juneau CL

02-2120 R22
HR Mgr I
Juneau CL

Management Services Unit

- 12-4301 R18
HR Spec II
Juneau CL
- 02-3202 R18
HR Spec II
Juneau CL
- 06-0041 R12
HR Tech I
Juneau CL
- 20-1012 R10
Office Asst II
Juneau CL
- 06-0009 R8
Office Asst I
Juneau CL
- 02-IN0903 R6
Student Intern I
Juneau CL
- 06-0018 R18
HR Spec II
Anchorage CL
- 03-0018 R16
(0.5) HR Spec I
Juneau CL

02-8073 R20
HR Spec III
Juneau CL

Payroll Unit

- 07-1606 R17
HR Tech Supv I
Juneau CL
- 08-1106 R15
HR Tech III
Juneau CL
- 02-1081 R14
HR Tech II
Juneau CL
- 03-0161 R14
HR Tech II
Juneau CL
- 07-1502 R14
HR Tech II
Juneau CL
- 05-1311 R14
HR Tech II
Juneau CL
- 07-1603 R15
HR Tech III
Juneau CL
- 08-1120 R14
HR Tech II
Juneau CL
- 02-1149 R14
HR Tech II
Juneau CL
- 04-4010 R14
HR Tech II
Juneau CL

Recruitment Unit

- 25-0047 R14
HR Tech II
Juneau CL
- 06-6158 R14
HR Tech II
Juneau CL
- 02-2016 R12
HR Tech I
Juneau CL

08-1102 R14
HR Tech II
Juneau CL

Management Services Unit

- 25-0264 R18
HR Spec II
Anchorage CL
- 25-1243 R16
HR Spec I
Anchorage CL
- 11-0288 R16
HR Spec I
Anchorage CL
- 25-2255 R18
HR Spec II
Juneau CL
- 05-7010 R16
HR Spec I
Juneau CL

25-0059 R20
HR Spec III
Juneau CL

Marine Payroll Unit

- 25-0097 R17
HR Tech Supv I
Juneau CL
- 25-3085 R8
Office Asst I
Juneau CL
- 25-3090 R15
HR Tech III
Juneau CL
- 25-1233 R14
HR Tech II
Juneau CL
- 25-3094 R14
HR Tech II
Juneau CL
- 25-2354 R14
HR Tech II
Juneau CL
- 02-1508 R14
HR Tech II
Juneau CL
- 25-3109 R14
HR Tech II
Juneau CL

Shoreside Payroll Unit

- 04-1100 R17
HR Tech Supv I
Juneau CL
- 25-1230 R14
HR Tech II
Juneau CL
- 25-2259 R14
HR Tech II
Juneau CL
- 25-3092 R14
HR Tech II
Juneau CL
- 25-0073 R12
HR Tech I
Juneau CL
- 06-0527 R10
Office Asst II
Juneau CL
- 02-IN0901 R6
Student Intern I
Juneau CL
- 25-0267 R15
HR Tech III
Anchorage CL
- 25-0265 R14
HR Tech II
Anchorage CL
- 25-1258 R14
HR Tech II
Anchorage CL
- 25-2959 R14
HR Tech II
Anchorage CL
- 25-0266 R10
Office Asst II
Anchorage CL

**STATE OF ALASKA
DEPARTMENT OF
ADMINISTRATION
DIVISION OF
PERSONNEL
Service Centers/
Statewide
Operations**

Recruitment Unit

- 11-0230 R14
HR Tech II
Juneau CL
- 06-0522 R12
HR Tech I
Juneau CL

Management Services Unit

- 06-0484 R18
HR Spec II
Juneau CL
- 02-9005 R18
HR Spec II
Juneau CL
- 20-1025 R18
HR Spec II
Anchorage CL
- 09-0010 R16
HR Spec I
Anchorage CL

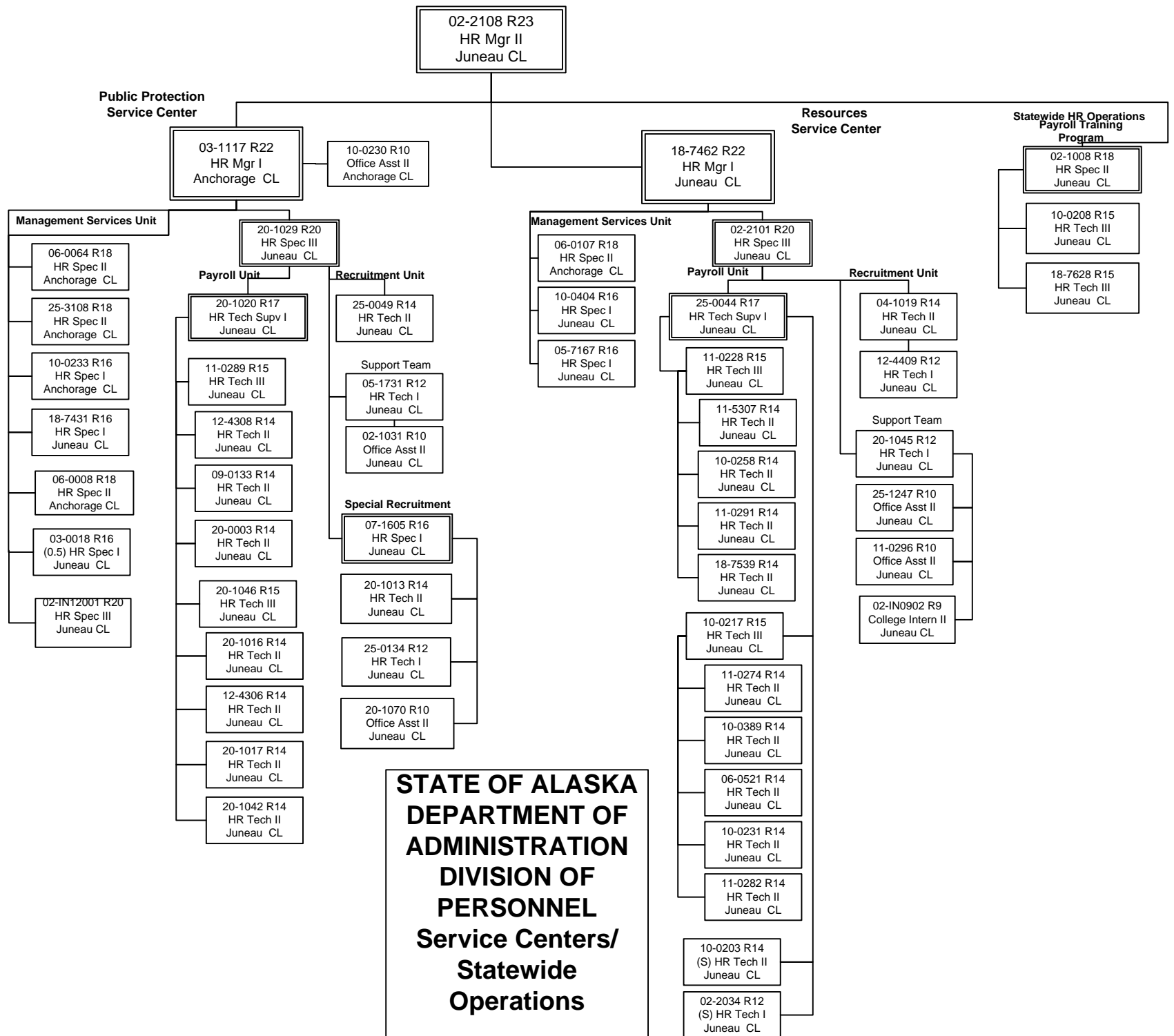
Payroll Unit

- 12-4315 R17
HR Tech Supv I
Juneau CL
- 04-1085 R15
HR Tech III
Juneau CL
- 06-0452 R14
HR Tech II
Juneau CL
- 02-1043 R14
HR Tech II
Juneau CL
- 06-0082 R14
HR Tech II
Juneau CL
- 06-0451 R14
HR Tech II
Juneau CL
- 06-0065 R15
HR Tech III
Anchorage CL
- 02-7459 R14
HR Tech II
Anchorage CL
- 06-6148 R14
HR Tech II
Anchorage CL
- 06-0072 R14
HR Tech II
Anchorage CL
- 10-0238 R14
HR Tech II
Anchorage CL

Recruitment Unit

- 20-1026 R16
HR Spec I
Juneau CL
- 02-1009 R14
HR Tech II
Juneau CL
- 08-1118 R12
HR Tech I
Juneau CL
- 06-6112 R14
HR Tech II (0.5)
Juneau CL
- 25-3074 R10
Office Asst II
Juneau CL
- 06-0046 R10
Office Asst II
Anchorage CL
- 06-0050 R8
Office Asst I
Anchorage CL
- 02-IN0905 R8
College Intern
Anchorage CL

Support Team



**STATE OF ALASKA
DEPARTMENT OF
ADMINISTRATION
DIVISION OF
PERSONNEL
Service Centers/
Statewide
Operations**