

**Agency: Commerce, Community and Economic Development****Grants to Municipalities (AS 37.05.315)****Grant Recipient: Anchorage****Federal Tax ID: 92-0059987****Project Title:****Project Type: Remodel, Reconstruction and Upgrades**

# Anchorage - Delaney Park Train Repair

**State Funding Requested: \$250,000****House District: Anchorage Areawide (16-32)**

One-Time Need

**Brief Project Description:**

Funds will be used to restore Train Engine 556 located in Delaney Park to a safe condition, including asbestos abatement and site landscape improvements.

**Funding Plan:**

Total Project Cost:	\$310,000
Funding Already Secured:	(\$50,000)
FY2013 State Funding Request:	(\$250,000)
Project Deficit:	\$10,000

*Funding Details:*

*The Anchorage Assembly dedicated \$50,000 in 2011.*

**Detailed Project Description and Justification:**

Funds will be used to restore Train Engine 556 located in Delaney Park to safe playground use. Municipal tax dollars are being used for asbestos abatement of Engine 556.

Engine 556 was a steam locomotive built in 1943 for wartime service. Outnumbering other war-time railroad engines, they were simple to maintain with the close clearance required for the narrow bridges and tunnels on European railroads. They were stripped down for war action, and acquired the nickname "Gypsy Rose Lee" locomotives after the famous burlesque dancer. Instead of being shipped to Europe, twelve of these locomotives were sent to Alaska by the U.S. Army to become Alaska Railroad Class 550. All twelve locomotives saw service over the 460 miles of the Alaska Railroad. For 13 years, No. 556 hauled passengers and freight from Seward through Anchorage and on to Fairbanks. In 1959, No. 556 was taken out of storage and moved to its present location, where it has been an educational display and object of play for three generations of Anchorage youngsters. Of the thousands of USRA Consolidation Type locomotives originally built for war service, only three remain in North America, and only this one is publicly owned.

Engine 556 design included asbestos as insulation for the engine to protect the crew compartment. The asbestos removal and cleanup will be completed as part of this project. Once clean-up is finished, the landscape will be restored to a park-like setting consistent with the Delaney Park Master Plan.

**Project Timeline:**

2012-2013

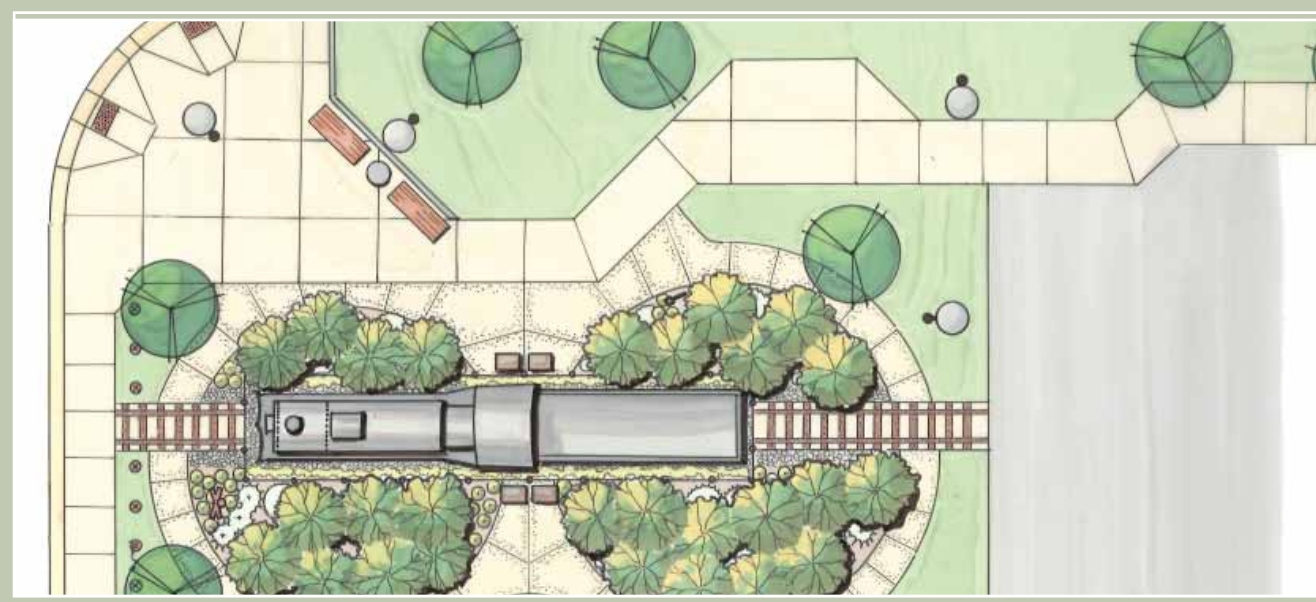
**Entity Responsible for the Ongoing Operation and Maintenance of this Project:**

Municipality of Anchorage, Parks & Recreation

**Grant Recipient Contact Information:**

Name: John Rodda  
Title: Director, Parks & Recreation  
Address: 632 West 6th Ave, Suite 630  
Anchorage, Alaska 99501  
Phone Number: (907)343-4562  
Email: roddaJR@muni.org

Has this project been through a public review process at the local level and is it a community priority?  Yes  No



2012

CAP SIS Project  
Number  
57985

Legislative  
District 23L

# ANCHORAGE PARKS & RECREATION

## Delaney Park - Repair and Restore the Train

### Project Description:

Funds will be used to restore Train Engine 556 located in Delaney Park to safe playground use. Municipal tax dollars are being used for asbestos abatement of Engine 556.

Engine 556 was a steam locomotive built in 1943 for wartime service. Outnumbering other war-time railroad engines, they were simple to maintain with the close clearance required for the narrow bridges and tunnels on European railroads. They were stripped down for war action, and acquired the nickname "Gypsy Rose Lee" locomotives after the famous burlesque dancer. Instead of being shipped to Europe, twelve of these locomotives were sent to Alaska by the U.S. Army to become Alaska Railroad Class 550. All twelve locomotives saw service over the 460 miles of the Alaska Railroad. For 13 years, No. 556 hauled passengers and freight from Seward through Anchorage and on to Fairbanks. In 1959, No. 556 was taken out of storage and moved to its present location, where it has been an educational display and object of play for three generations of Anchorage youngsters. Of the thousands of USRA Consolidation Type locomotives originally built for war service, only three remain in North America, and only this one is publicly owned.

Engine 556 design included asbestos as insulation for the engine to protect the crew compartment. The asbestos removal and cleanup will be completed as part of this project. Once clean-up is finished, the landscape will be restored to a park-like setting consistent with the Delaney Park Master Plan.



### Parks & Recreation

Anchorage has 10,946 acres of municipal parkland, 223 parks, and over 250 miles of trails and greenbelts that link neighborhoods with surrounding natural open space and wildlife habitat. These are considerable assets for the citizens of Anchorage to enjoy and maintain.

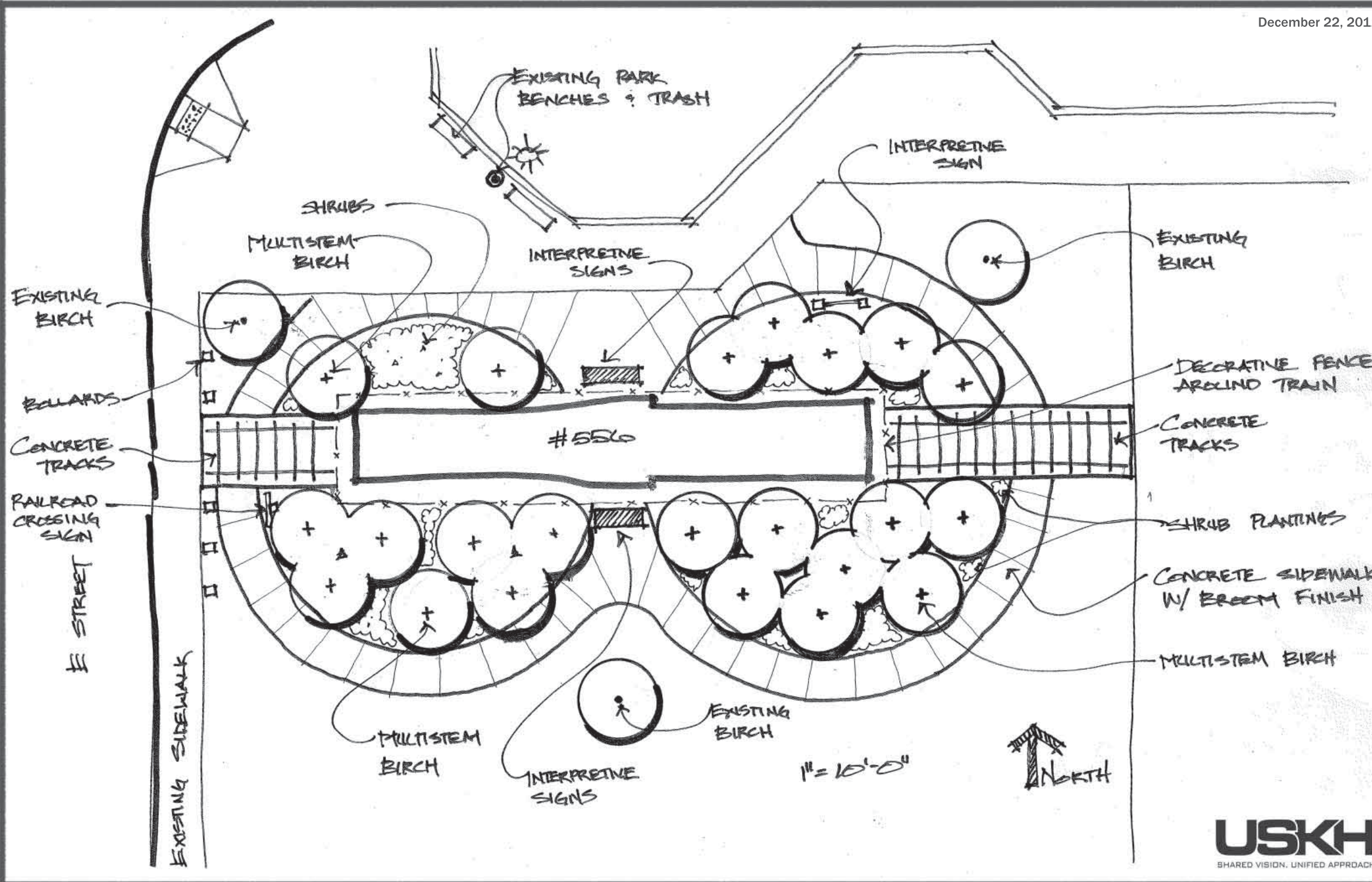
Parks & Recreation launched the *Clean & Green, Safe & Secure Campaign* with the Anchorage Park Foundation to upgrade the safety, function, and appearance of Anchorage parks. To get involved, call 343-4587.





# Project Cost Estimate

December 22, 2011



Project Budget	Cost
1. Design	\$20,000
2. Asbestos Abatement	\$40,000
3. Hardscape	\$80,000
4. Landscape	\$60,000
5. Site improvements & Amenities	\$110,000
<b>Total</b>	<b>\$310,000</b>
<b>Funding:</b>	
1. MOA Funds for Design & Asbestos Abatement	\$60,000
2. Funding Required	\$250,000
<b>Total 2012 Legislative Request</b>	<b>\$250,000</b>

## Delaney Park - Repair and Restore the Train

