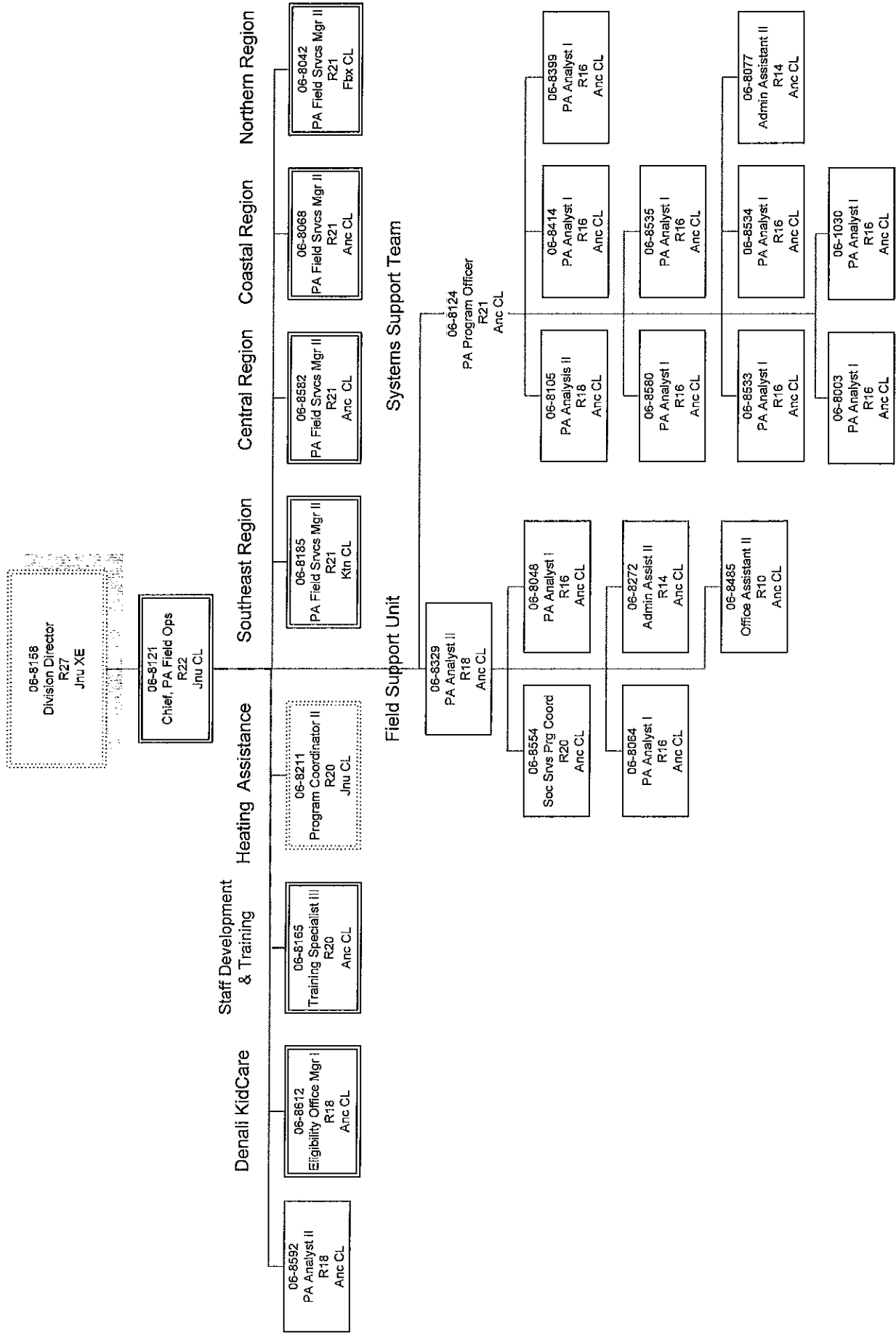
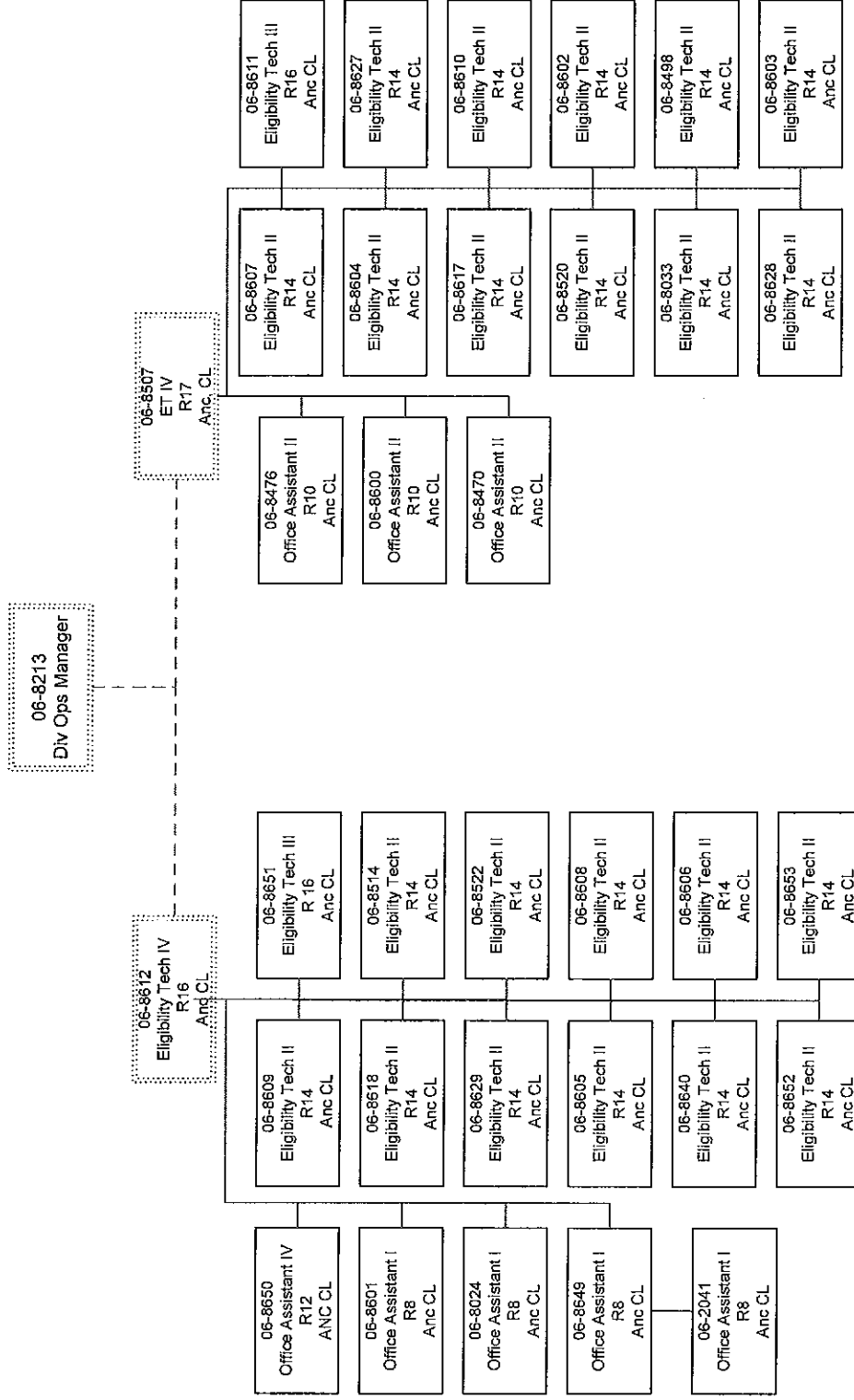


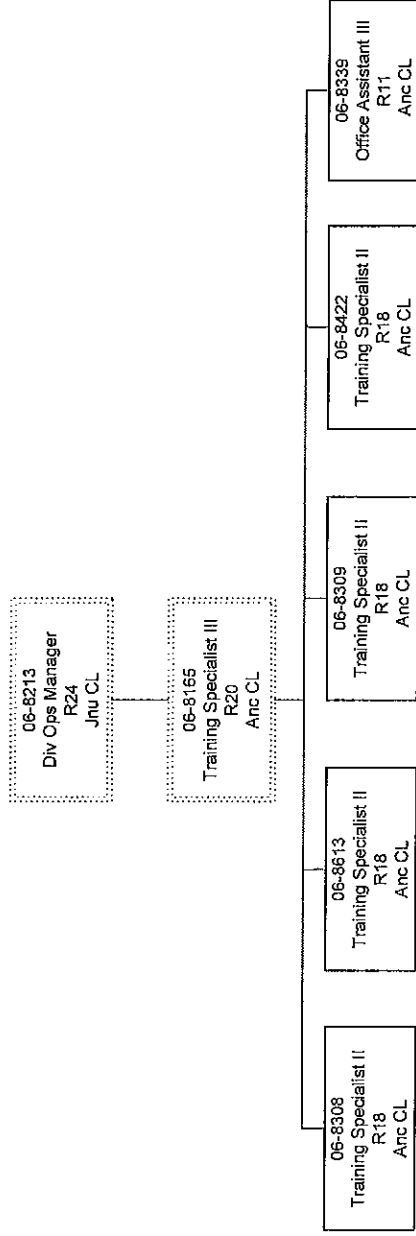
DEPARTMENT OF HEALTH AND SOCIAL SERVICES
 Division of Public Assistance
 Field Services
 Administration



DEPARTMENT OF HEALTH AND SOCIAL SERVICES
 Division of Public Assistance
 Field Services
 Denali KidCare



DEPARTMENT OF HEALTH AND SOCIAL SERVICES
Division of Public Assistance
Field Services
Staff Development & Training

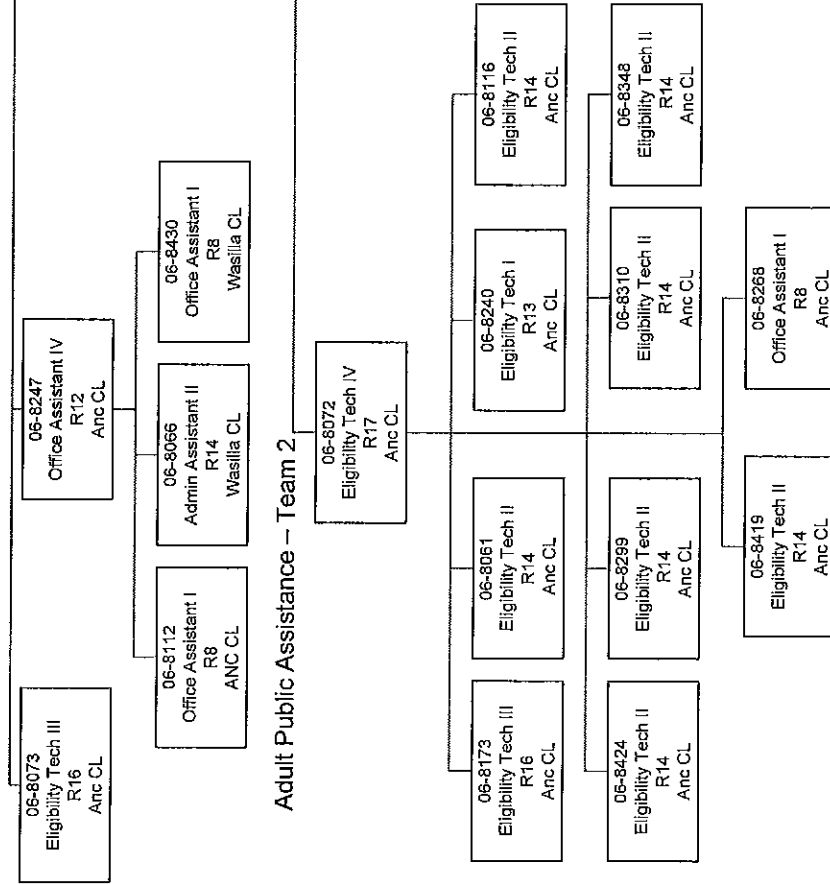


DEPARTMENT OF HEALTH AND SOCIAL SERVICES
 Division of Public Assistance
 Field Services

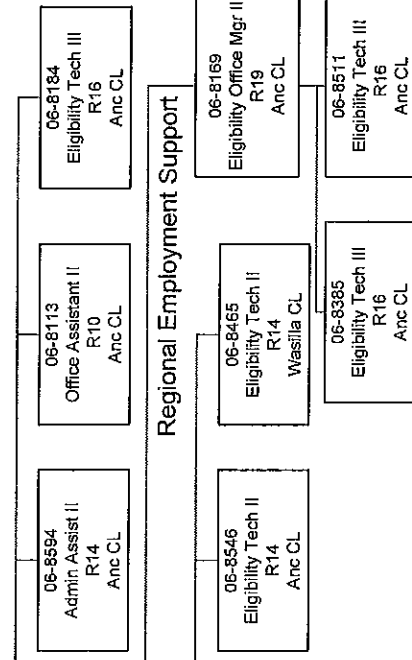
Central Region
 Regional Support and Adult Public Assistance

06-8582
 PA Field Svcs Mgr II
 R21
 Anc CL

Adult Public Assistance Clerical Team

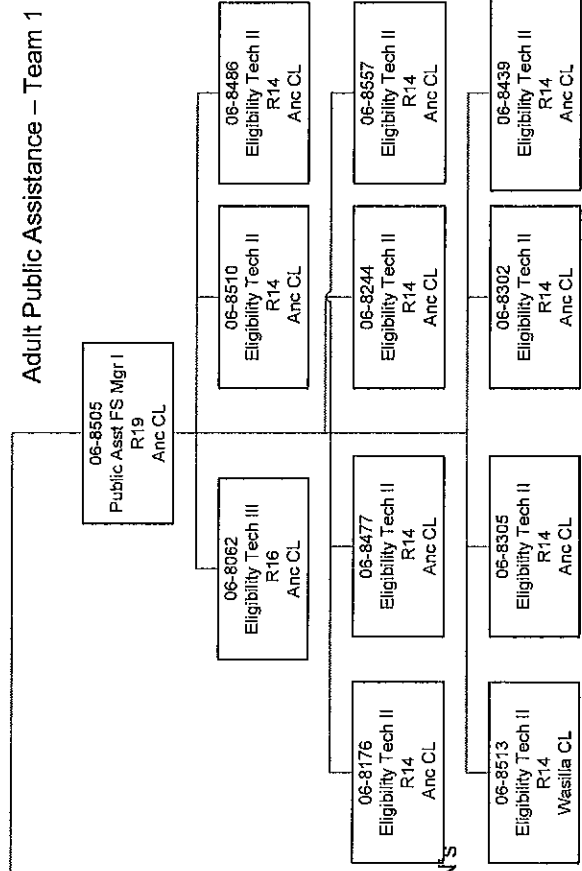


Regional Support



Regional Employment Support

Adult Public Assistance – Team 1

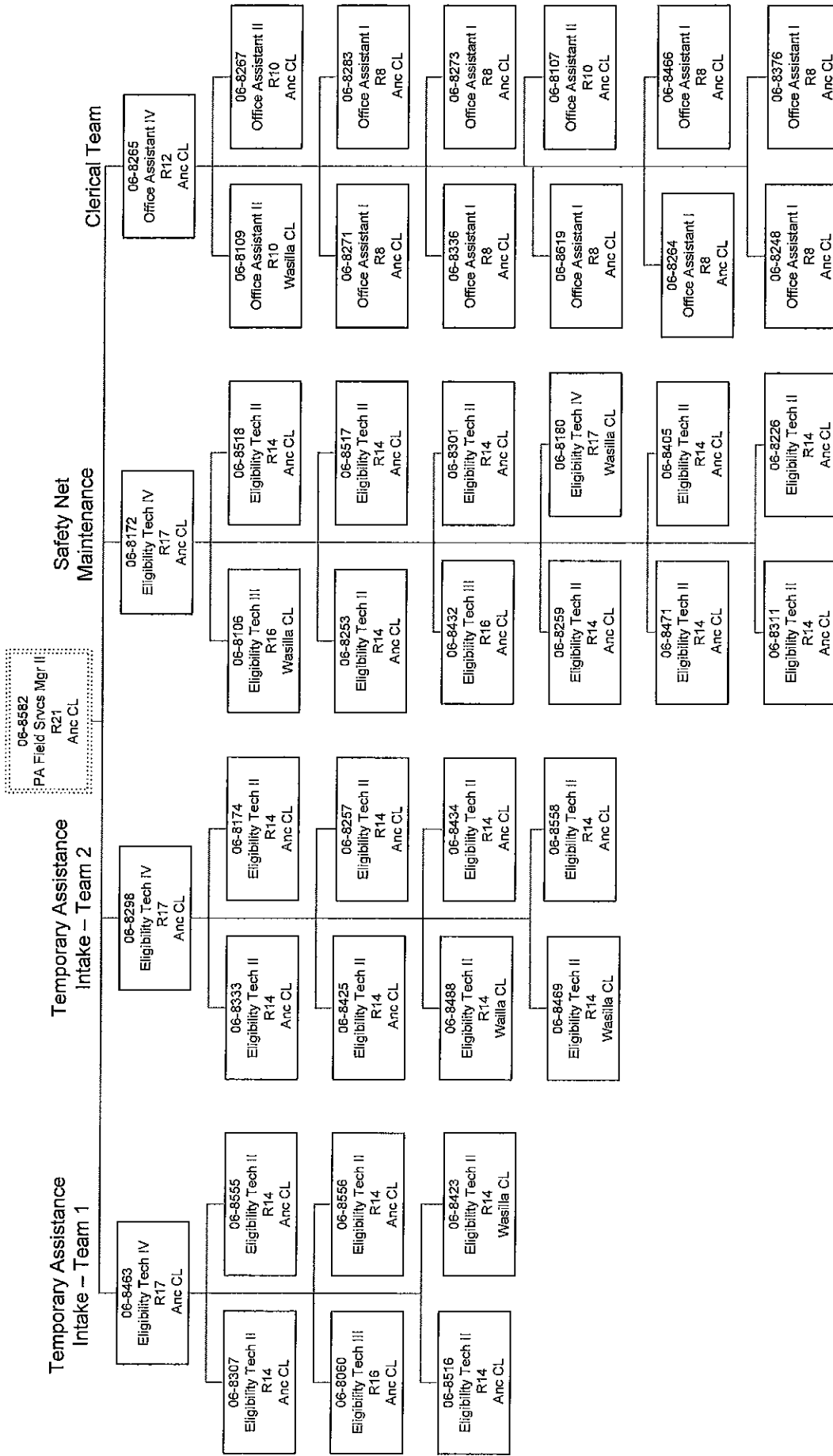


Alaska Native Medical Center – Outstationed PCN'S



Outstationed
 At Gateway
 Learning Center

DEPARTMENT OF HEALTH AND SOCIAL SERVICES
 Division of Public Assistance
 Field Services
 Central Region
 Anchorage/Gambell



DEPARTMENT OF HEALTH AND SOCIAL SERVICES
 Division of Public Assistance
 Field Services
 Central Region
 Mat-Su

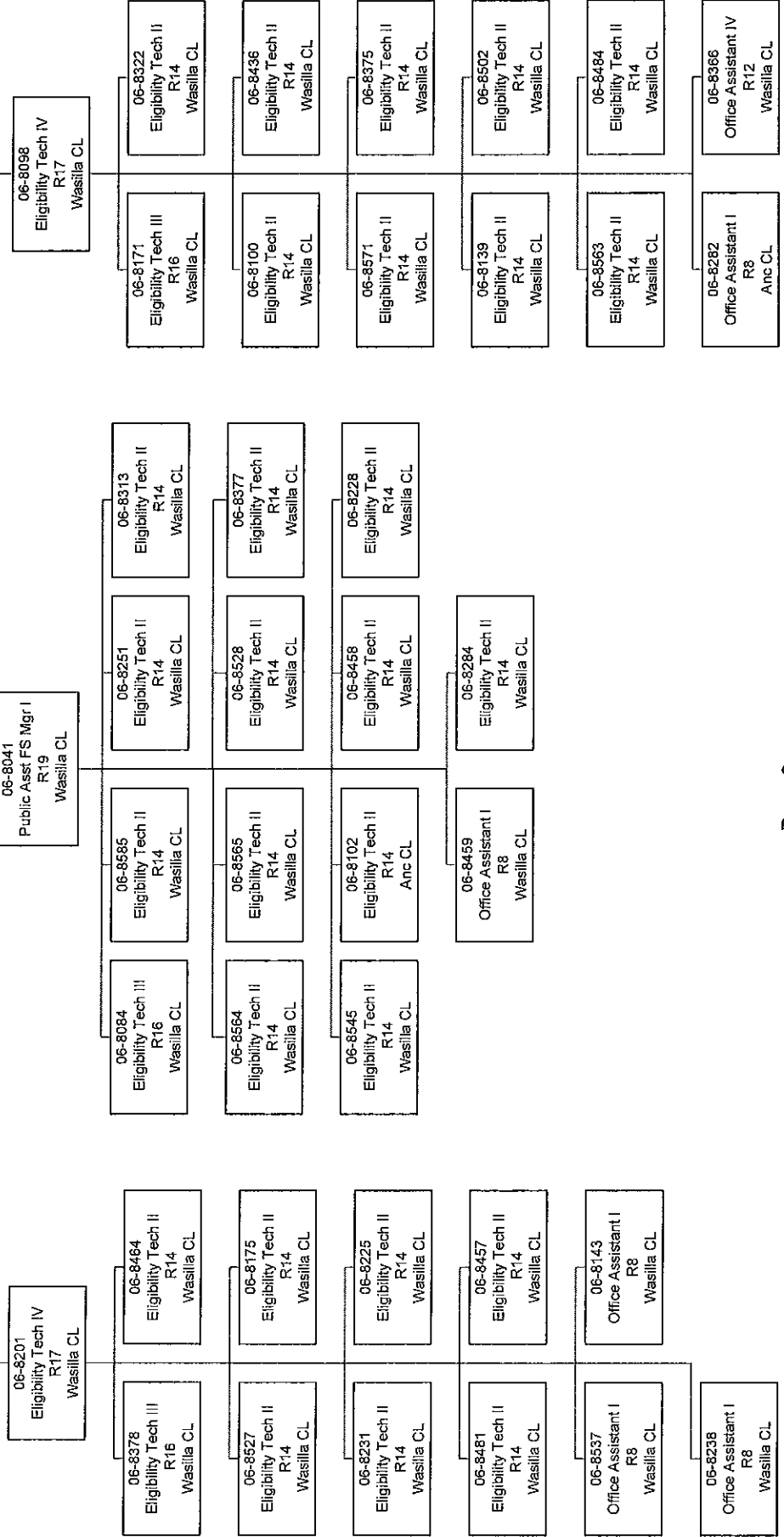
06-8582
 PA Field Svcs Mgr II
 R21
 Anc CL

06-8384
 Eligibility Office Mgr II
 R19
 Wasilla CL

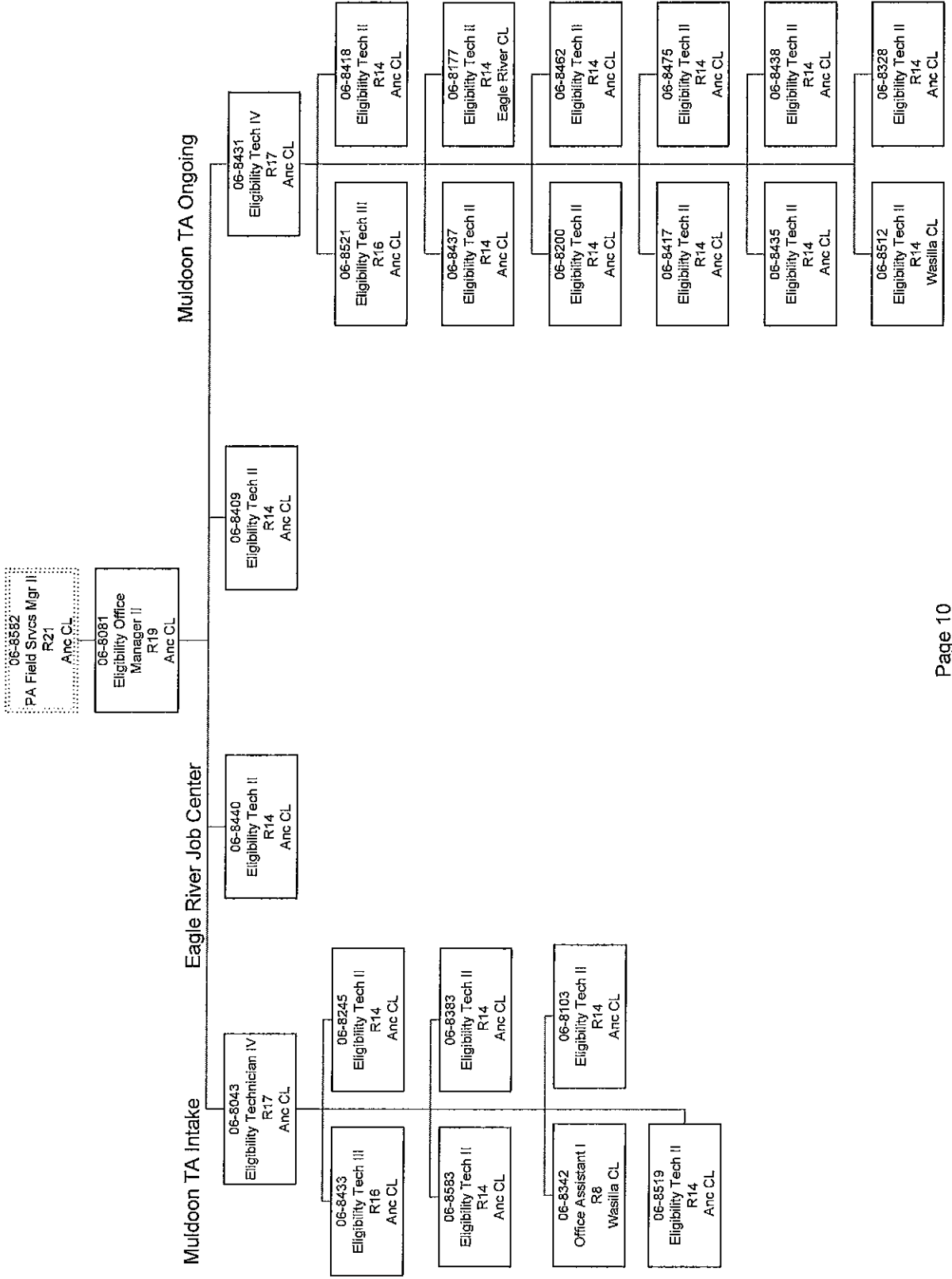
Mat-Su TA Ongoing

Safety Net Maintenance

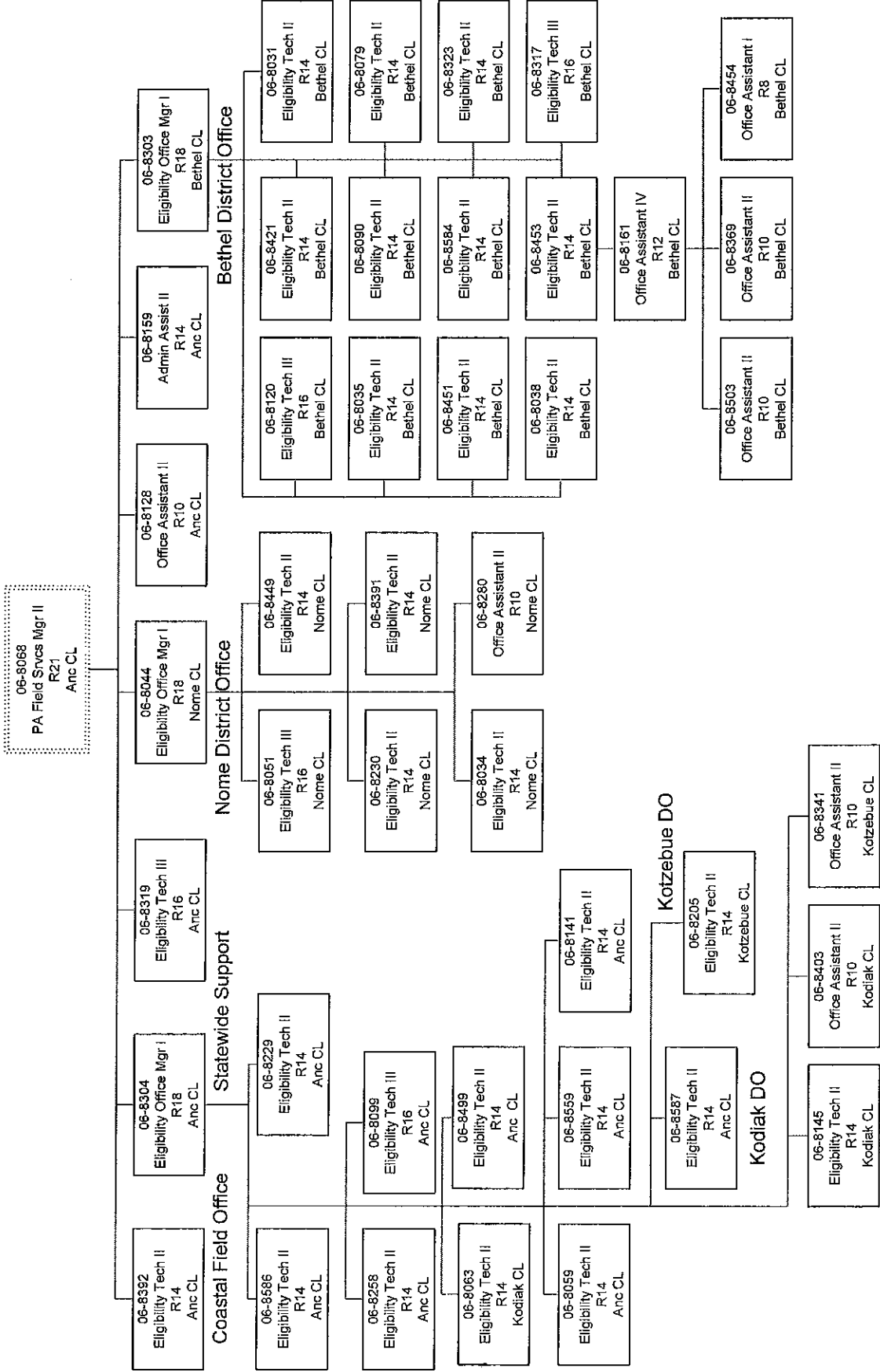
Mat-Sue TA Intake



DEPARTMENT OF HEALTH AND SOCIAL SERVICES
 Division of Public Assistance
 Field Services
 Central Region
 Muldoon

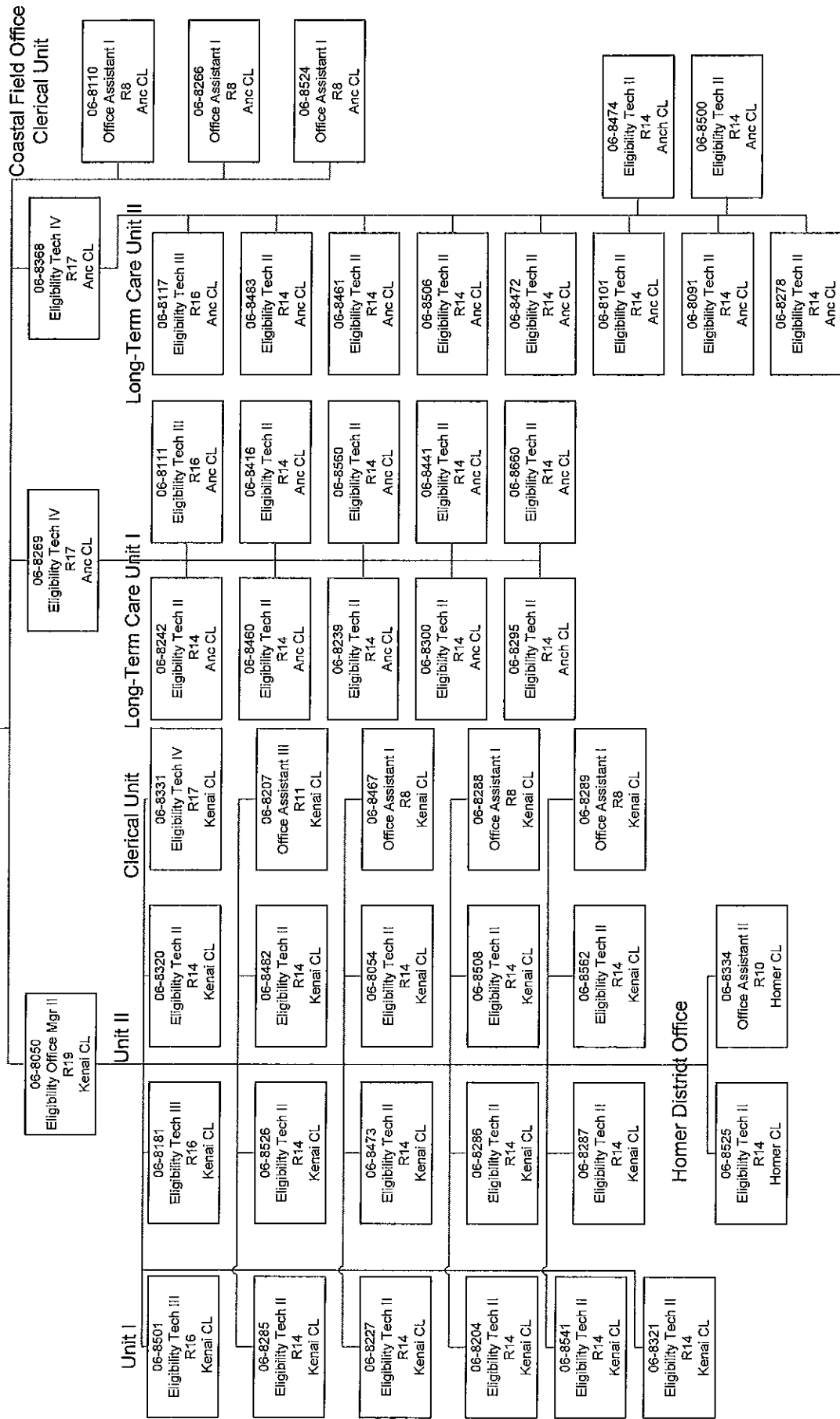


DEPARTMENT OF HEALTH AND SOCIAL SERVICES
 Division of Public Assistance
 Field Services
 Coastal Region



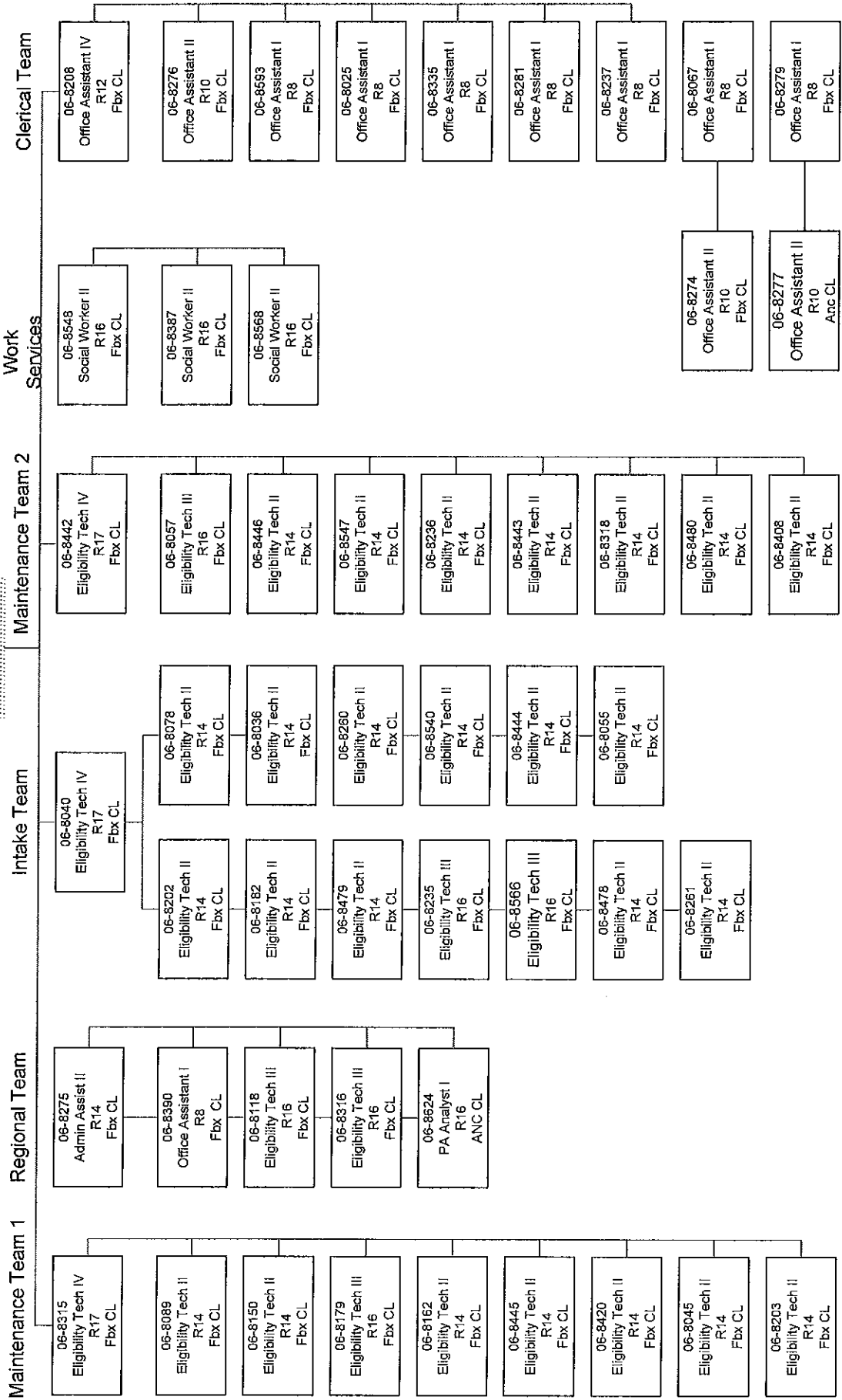
DEPARTMENT OF HEALTH AND SOCIAL SERVICES
 Division of Public Assistance
 Field Services
 Coastal Region

06-8068
 PA Field Svcs Mgr II
 R21
 Anc CL



DEPARTMENT OF HEALTH AND SOCIAL SERVICES
 Division of Public Assistance
 Field Services
 Northern Region

06-8042
 PA Field Svcs Mgr II
 R21
 Fbx CL



DEPARTMENT OF HEALTH AND SOCIAL SERVICES
 Division of Public Assistance
 Field Services
 Southeast Region

