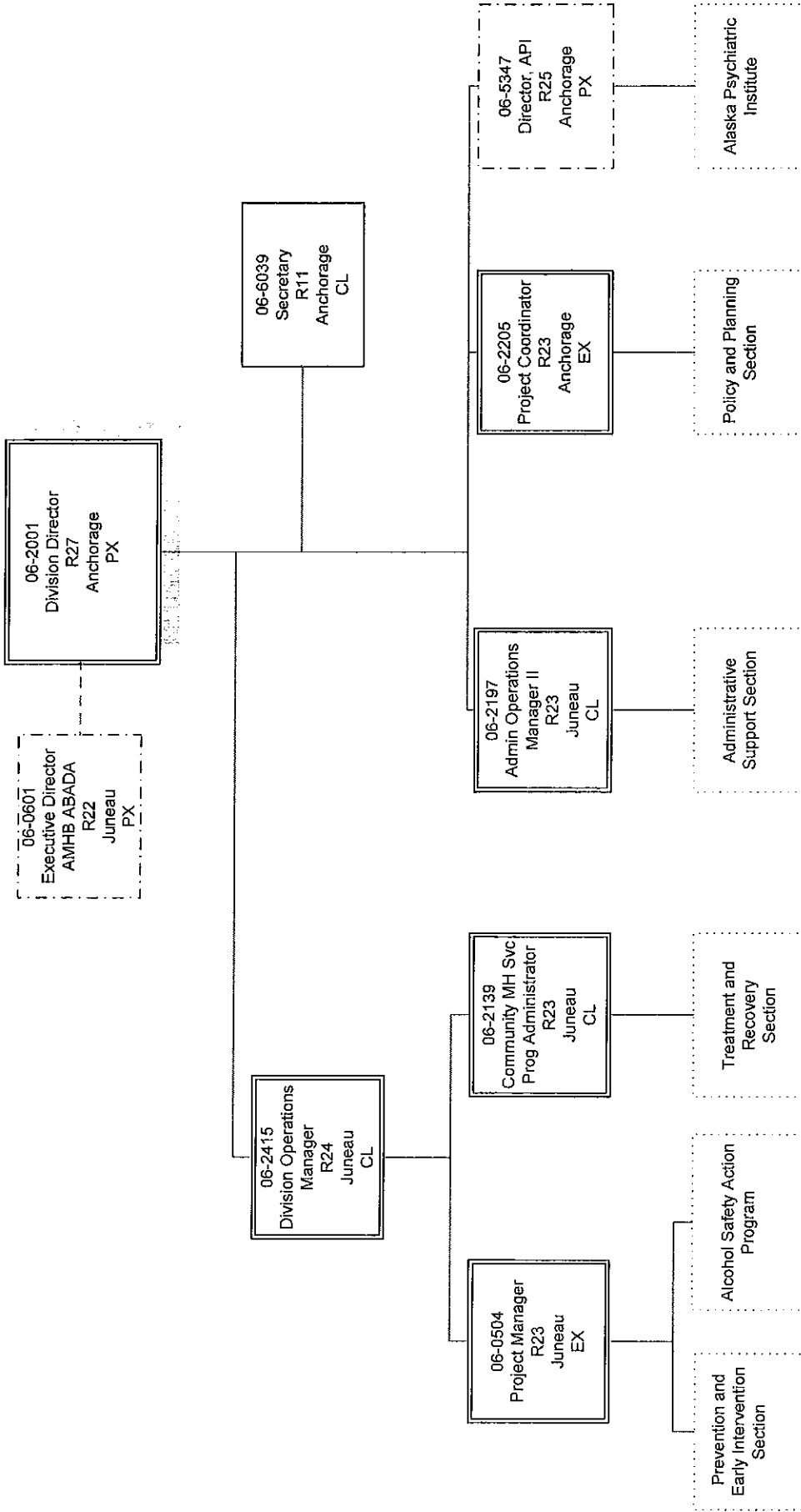
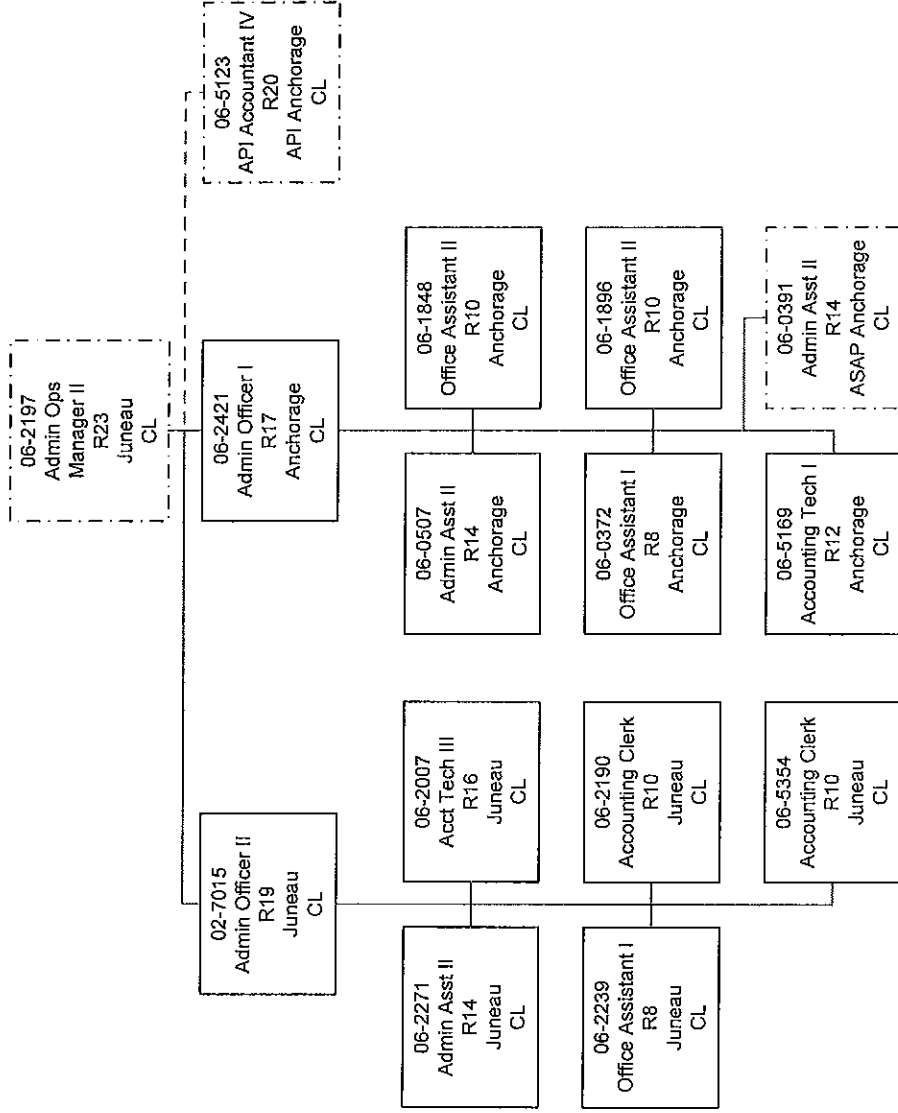


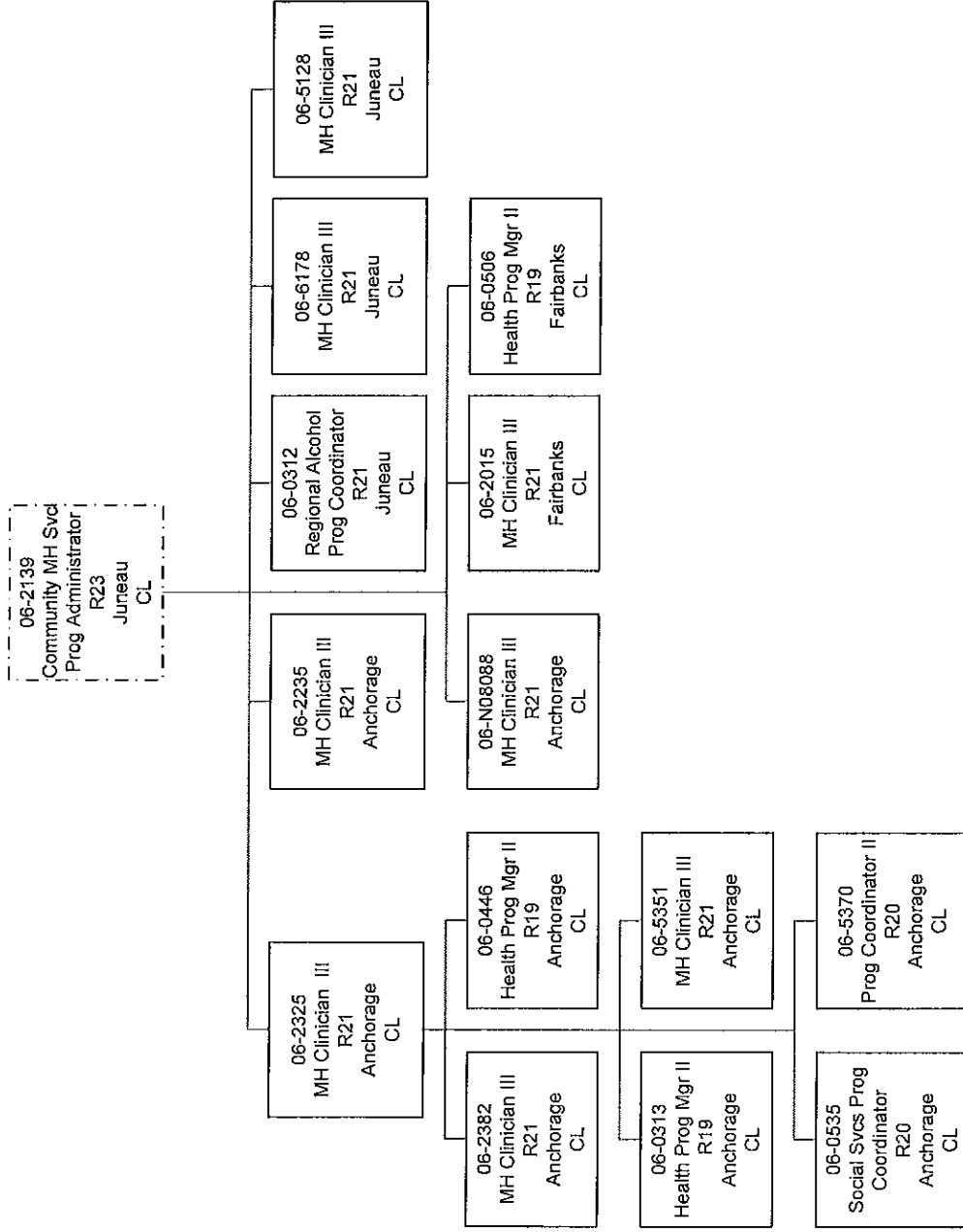
Department of Health and Social Services  
 Division of Behavioral Health  
 FY2013 Operating Budget  
 Director's Office

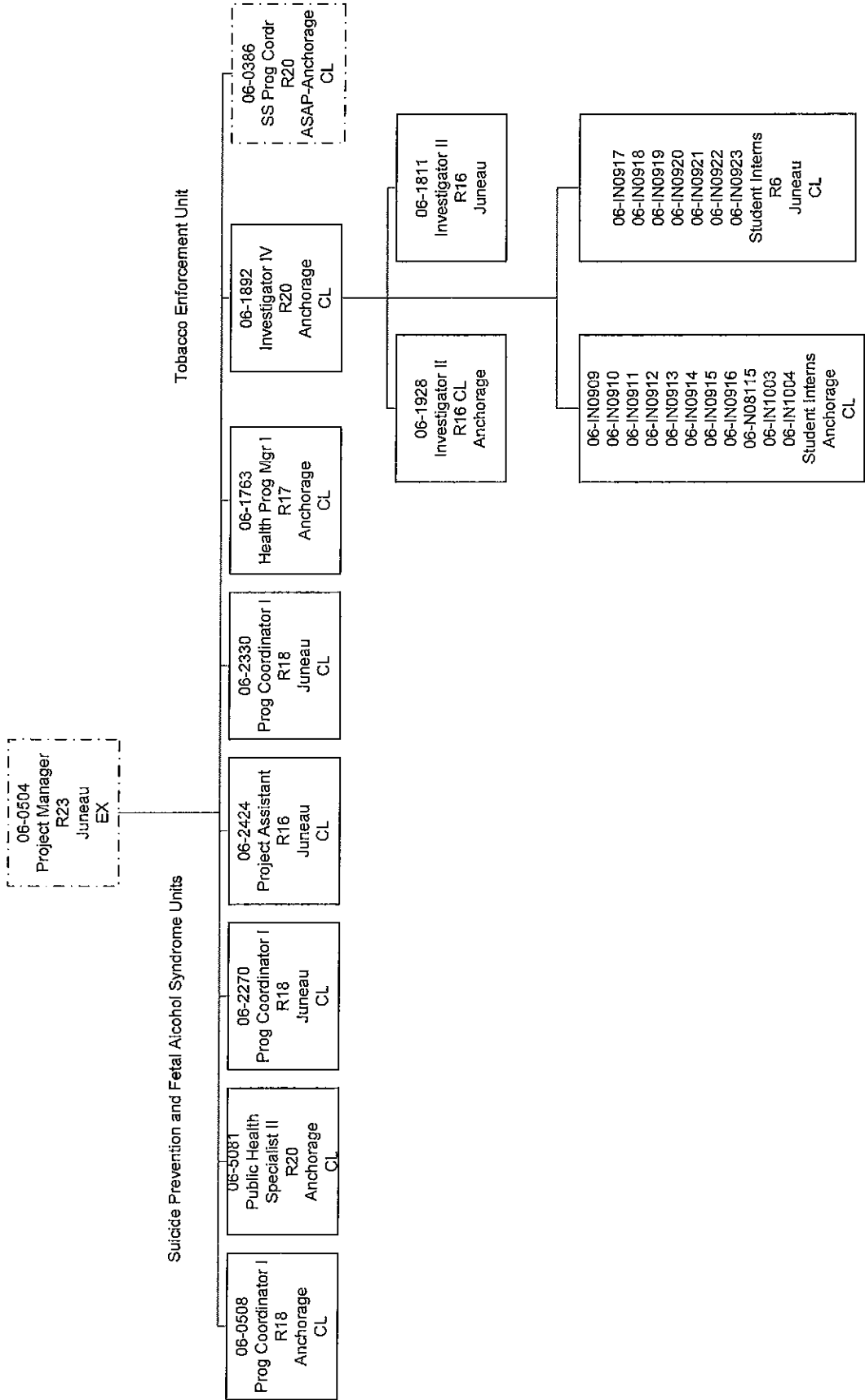


Department of Health and Social Services  
 Division of Behavioral Health  
 FY2013 Operating Budget  
 Administrative Support Section



Department of Health and Social Services  
 Division of Behavioral Health  
 FY2013 Operating Budget  
 Treatment & Recovery Section





Department of Health and Social Services  
 Division of Behavioral Health  
 FY2013 Operating Budget  
 Policy & Planning Section

06-2205  
 Project Coordinator  
 R23 EX  
 Anchorage  
 EX

