

SOUTHEAST REGION DESIGN & ENGINEERING SERVICES	
POSITIONS	TOTAL
FULL-TIME	75
SEASONAL	7
NON PERM	4
<b>TOTAL</b>	<b>86</b>

**REGIONAL DIRECTOR**  
 Reg Director  
 25-1239 (27) XE PFT

**PRE-CONSTRUCTION ENGINEER**  
 Eng/Arch V  
 25-2300 (27) SS PFT

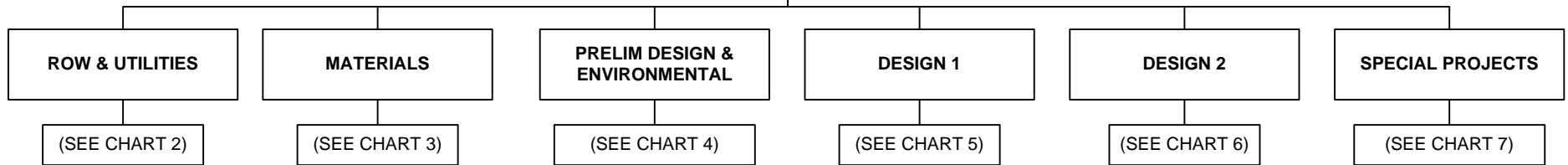
**Administrative Officer I**  
 25-2351 (17) SS PFT

**Admin Assistant I**  
 25-0498 (12) GG PFT

**Office Assistant II**  
 25-2327 (10) GG PFT

**Office Assistant II**  
 25-2345 (10) GG PFT

**Office Assistant II**  
 25-2299 (10) GG PFT



Non-Permanent  
 Positions assigned as  
 needed  
 (SEE CHART 7)

CHART 1

Positions	Total
Full-Time	6
Seasonal	0
<b>Total</b>	<b>6</b>

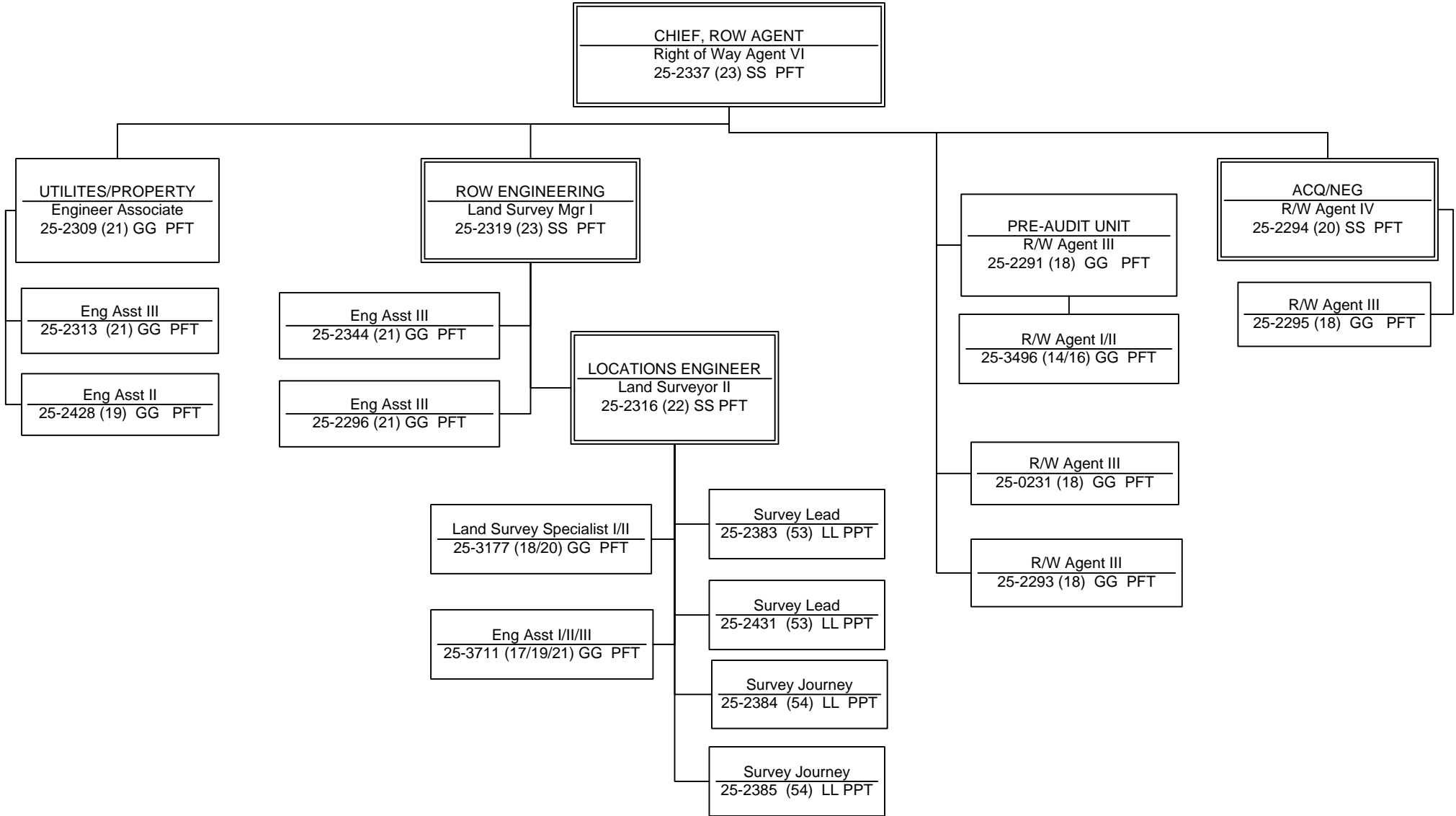


CHART 2

Positions	Total
Full-Time	17
Seasonal	4
<b>Total</b>	<b>21</b>

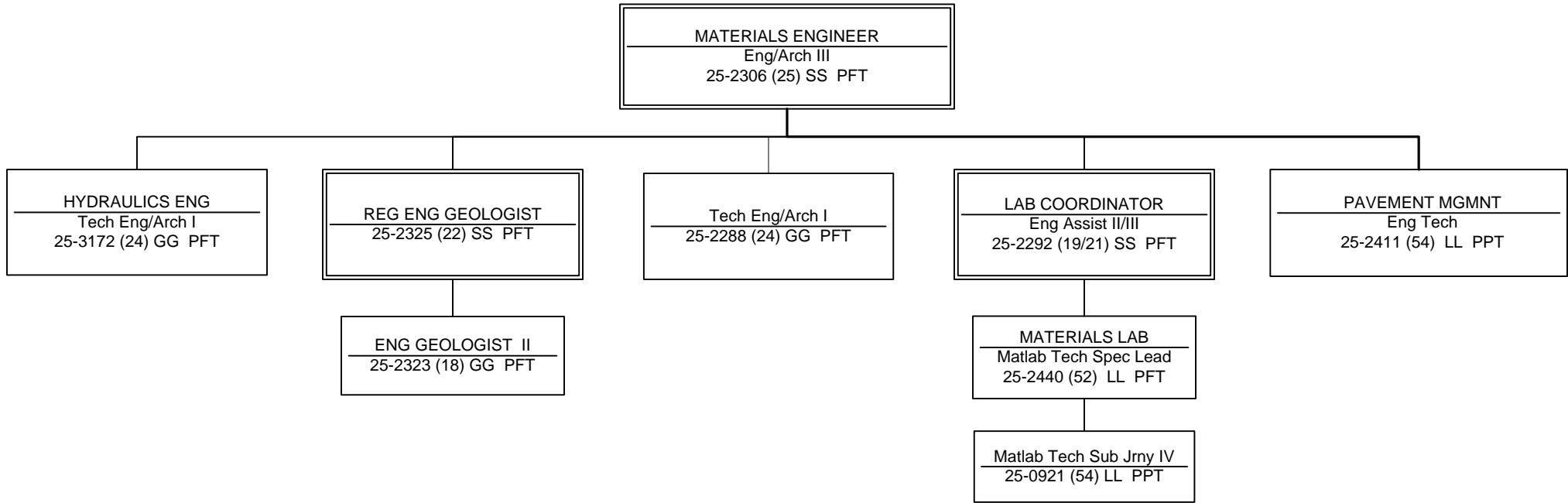


CHART 3

Positions	Total
Full-Time	7
Seasonal	2
<b>Total</b>	<b>9</b>

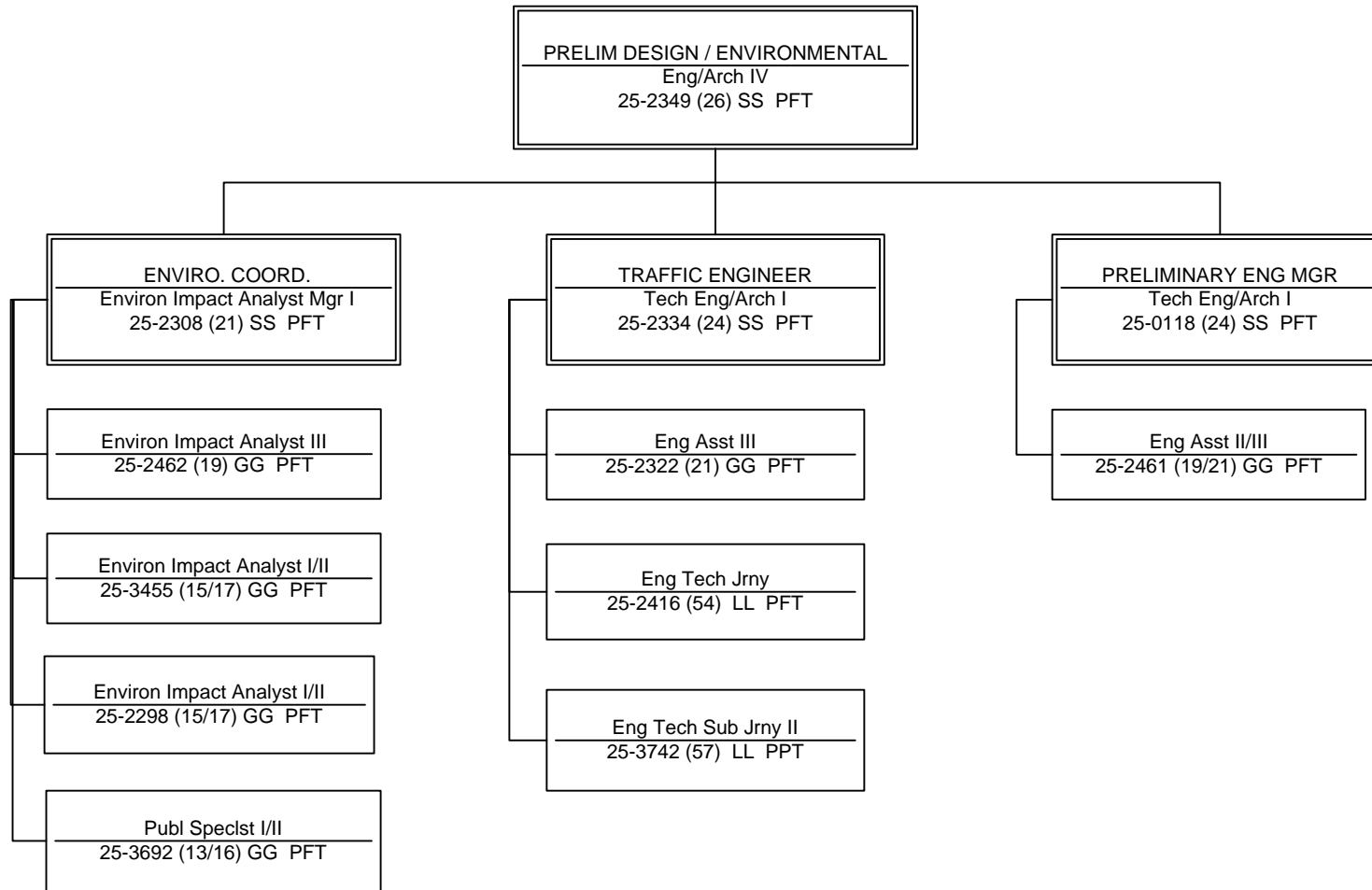


CHART 4

Positions	Total
Full-Time	11
Seasonal	1
<b>Total</b>	<b>12</b>

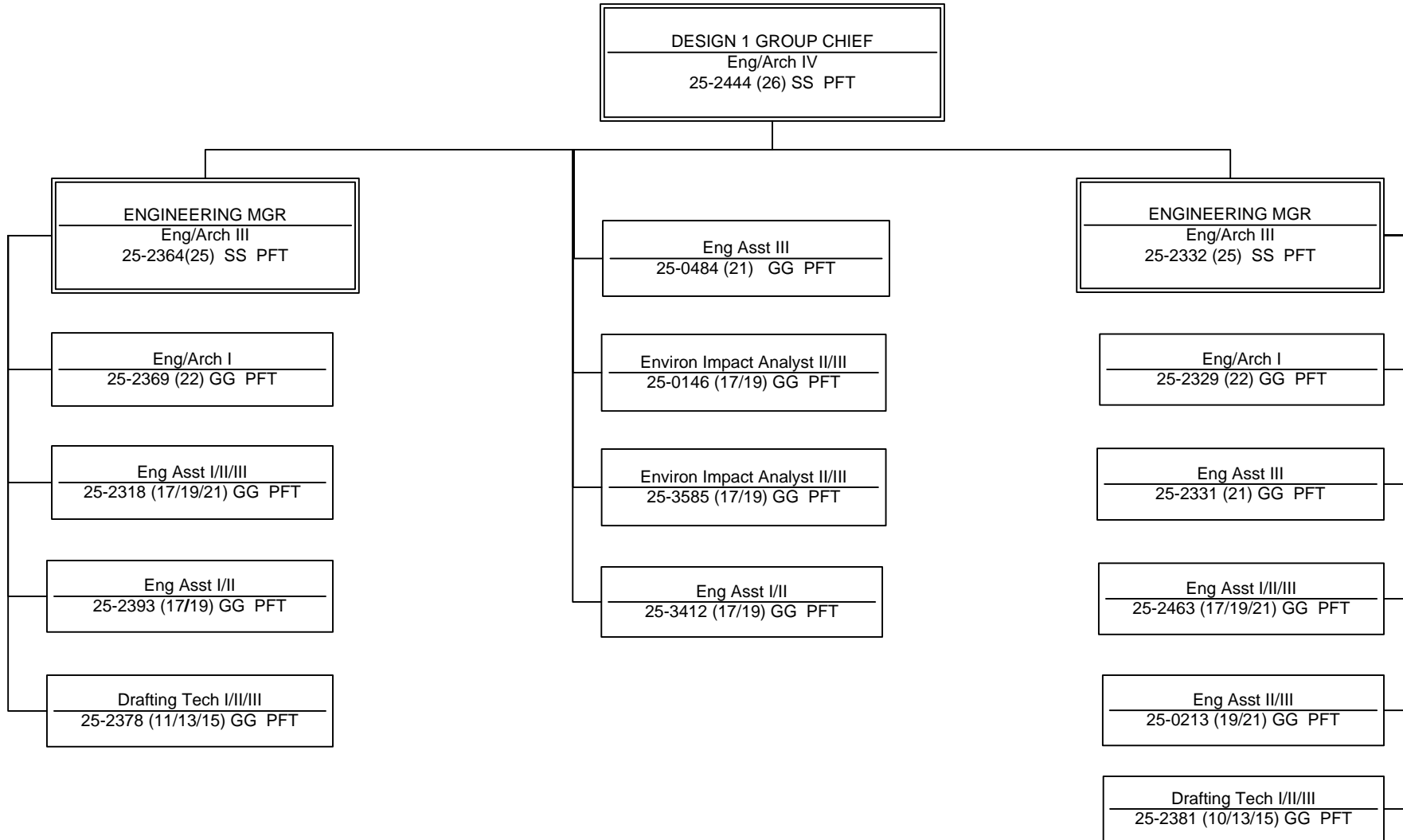


CHART 5

Positions	Total
Full-Time	16
Seasonal	0
<b>Total</b>	<b>16</b>

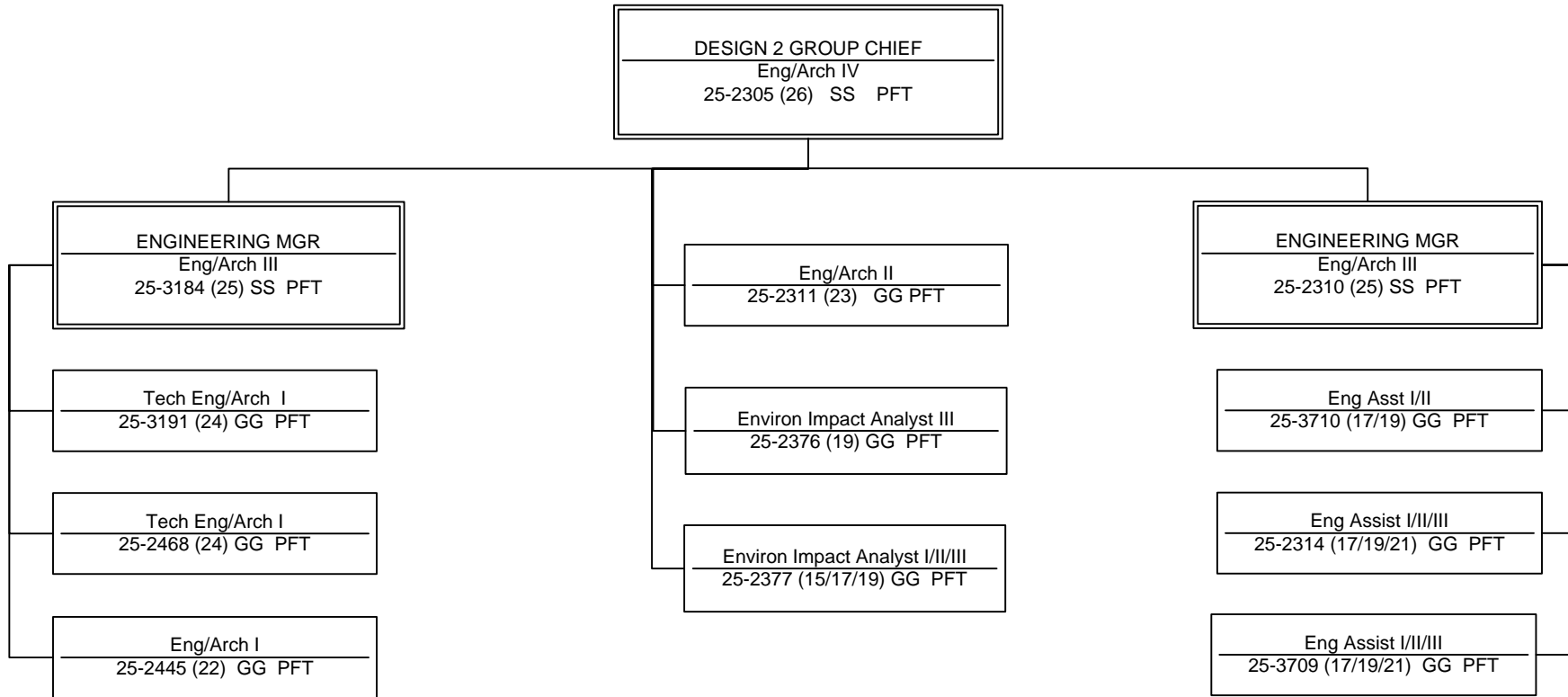
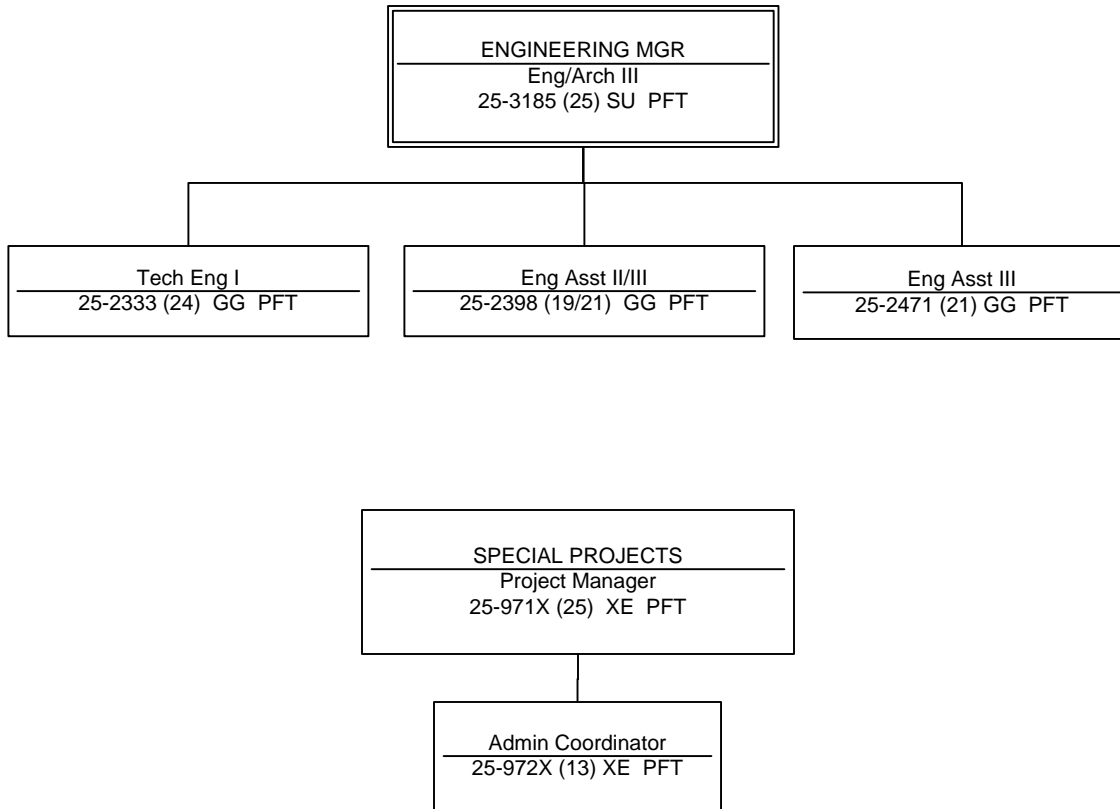


CHART 6

Positions	Total
Full-Time	12
Seasonal	0
<b>Total</b>	<b>12</b>



**NONPERMANENT POSITIONS – Assigned As Needed**

College Intern I/II/III  
 25-IN1107 (08/09/10/12) EE NP

College Intern I/II/III/IV  
 25-IN1117 (8/9/10/12) EE NP

College Intern I/II/III/IV  
 25-IN1118 (8/9/10/12) EE NP

College Intern I/II/III/IV  
 25-IN1119 (8/9/10/12) EE NP

CHART 7

Positions	Total
Full-Time	6
Seasonal	0
Non Permanent	4
<b>Total</b>	<b>10</b>