

ALASKA MARINE HIGHWAY SYSTEM

Marine Shore Operations

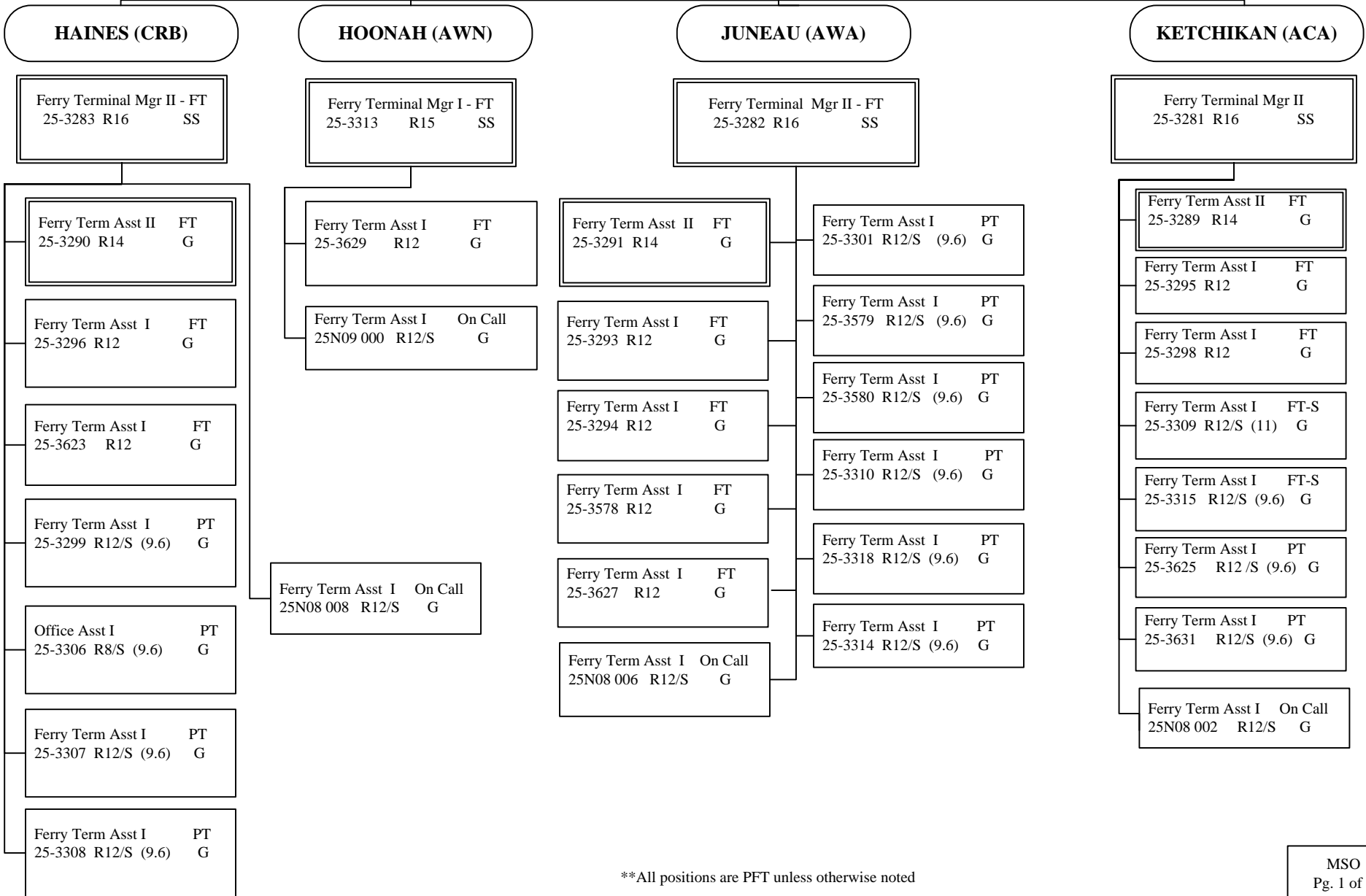
SOUTHEAST TERMINALS

FY13 GOVERNOR'S BUDGET

**Business Enterp & Development
Manager
25-3602**

**Ferry Terminal Operations Mgr – FT
25-3331 R18 KTN SS**

Terminal Ops Asst - FT
25-3617 R12 KTN G



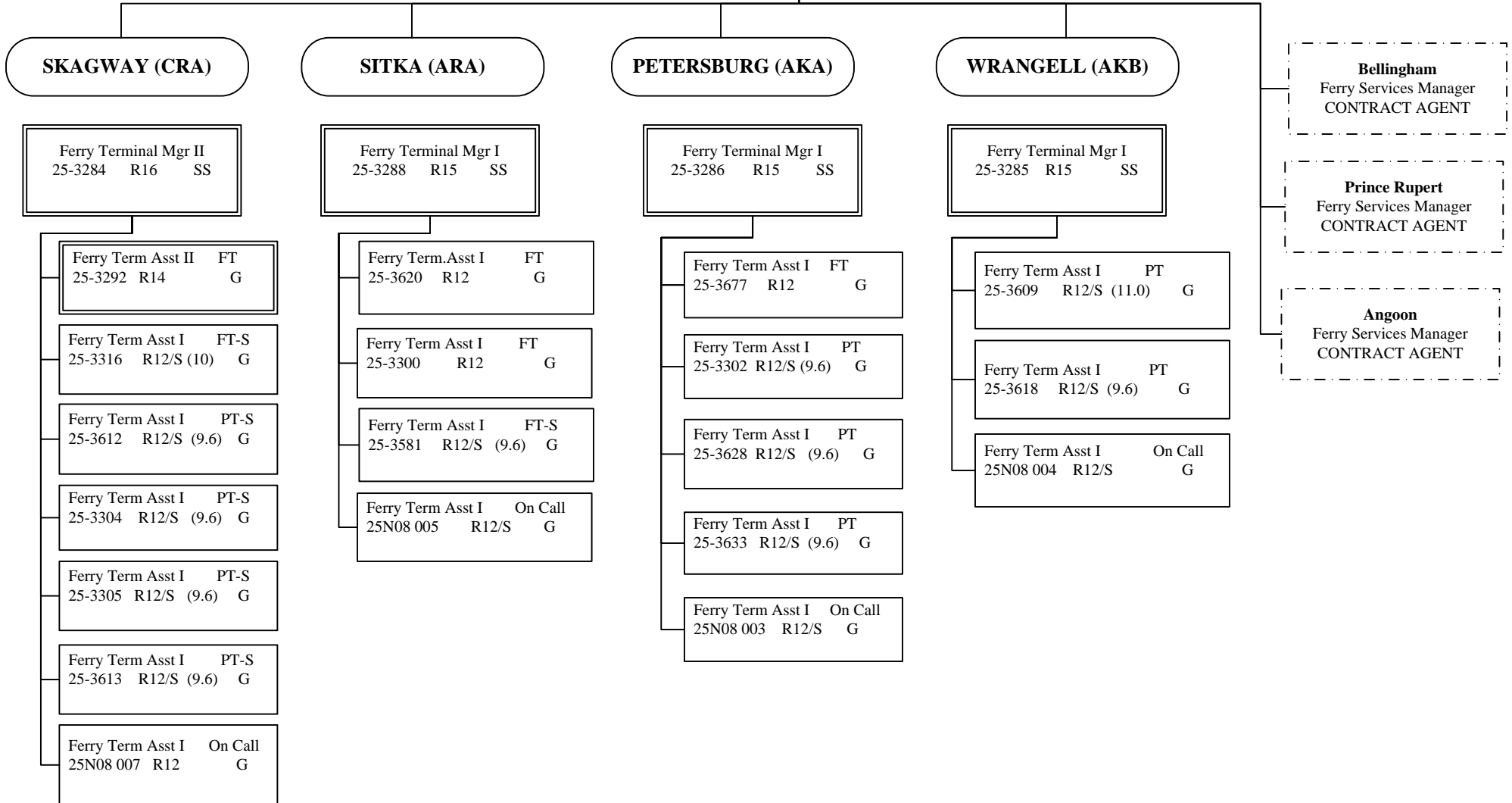
**All positions are PFT unless otherwise noted

ALASKA MARINE HIGHWAY SYSTEM

Marine Shore Operations SOUTHEAST TERMINALS FY13 GOVERNOR'S BUDGET

**Business Enterprise and
Development Manager**
25-3602

Terminal Operations Mgr
25-3331 See SE Terminal Pg. 1



**All positions are PFT unless otherwise noted.

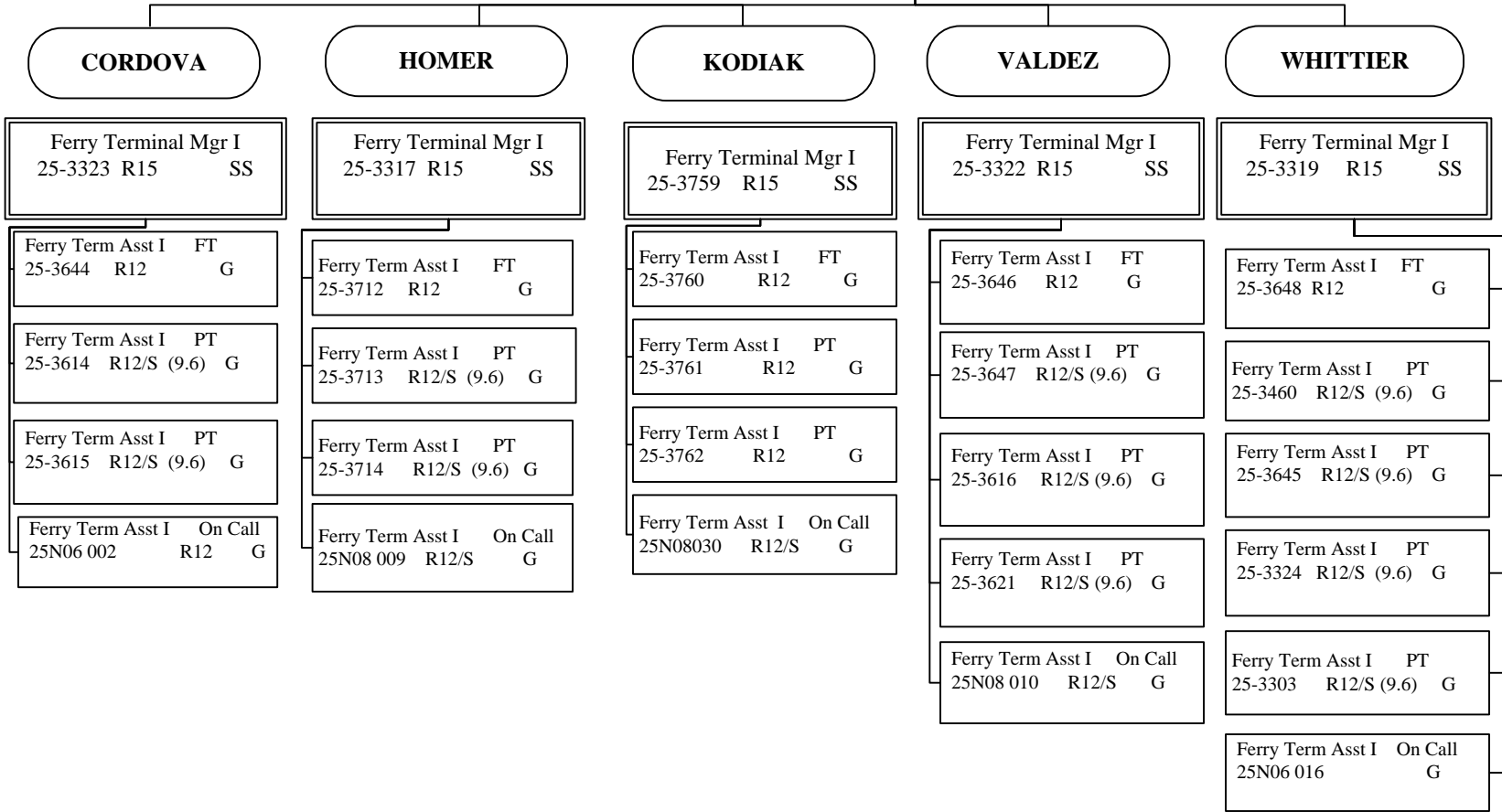
ALASKA MARINE HIGHWAY SYSTEM

Marine Shore Operations SOUTHWEST TERMINALS FY13 GOVERNOR'S BUDGET

**Business Enterp &
Development Manager**
25-3602

Terminal Operations Mgr
25-3331 see SE Terminals Pg. 1

SELDOVIA
Ferry Services Mgr
CONTRACT AGENT



**All positions are PFT unless otherwise noted.