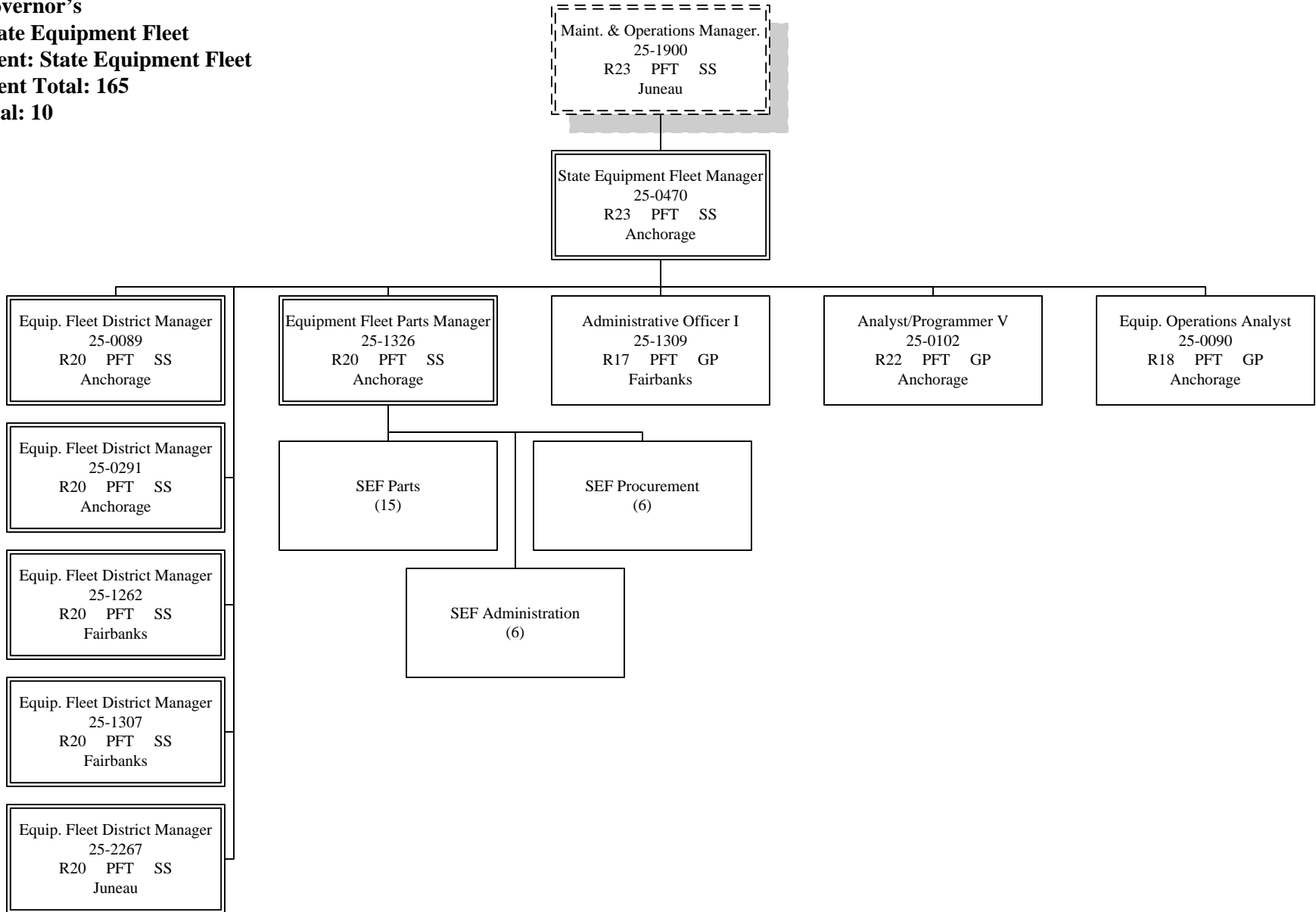
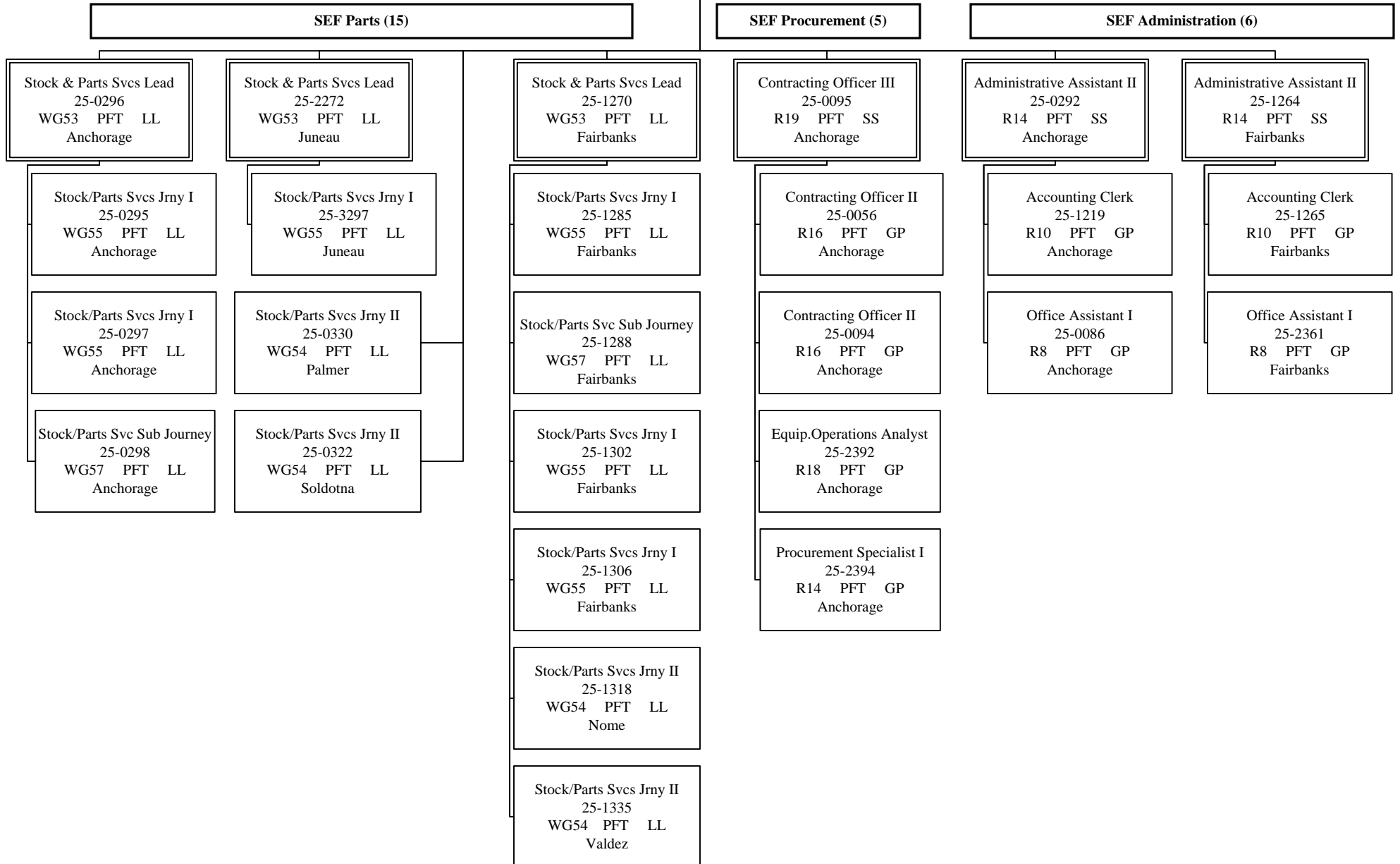


**FY13 Governor's
 RDU: State Equipment Fleet
 Component: State Equipment Fleet
 Component Total: 165
 Page Total: 10**



Equipment Fleet Parts Manager
 25-1326
 R20 PFT SS
 Anchorage

State Equipment Fleet Manager
 25-0470
 R23 PFT SS
 Anchorage



**FY13 Governor's
RDU: State Equipment Fleet
Component: State Equipment Fleet
Component Total: 165
Page Total: 32**

Equip. Fleet District Manager
25-0089
R20 PFT SS
Anchorage

State Equipment Fleet Manager
25-0470
R23 PFT SS
Anchorage

Mech Auto Foreman II
25-0300
WG51 PFT LL
Anchorage

Mech Auto Foreman II
25-0299
WG51 PFT LL
Anchorage

Mech Auto Foreman II
25-0323
WG51 PFT LL
Palmer

Mech Auto Adv Journey
25-0311
WG53 PFT LL
Anchorage

Mech Auto Adv Journey
25-0315
WG53 PFT LL
Anchorage

Mech Auto Adv Journey
25-0301
WG53 PFT LL
Anchorage

Mech Auto Adv Journey
25-0302
WG53 PFT LL
Anchorage

Mech Auto Adv Journey
25-0313
WG53 PFT LL
Palmer

Mech Auto Adv Journey
25-0324
WG53 PFT LL
Palmer

Mech Auto Adv Journey
25-0329
WG53 PFT LL
Anchorage

Mech Auto Adv Journey
25-0337
WG53 PFT LL
Anchorage

Mech Auto Adv Journey
25-0303
WG53 PFT LL
Anchorage

Mech Auto Adv Journey
25-0304
WG53 PFT LL
Anchorage

Mech Auto Adv Journey
25-0325
WG53 PFT LL
Palmer

Mech Auto Adv Journey
25-0326
WG53 PFT LL
Palmer

Mech Auto Adv Journey
25-0340
WG53 PFT LL
Anchorage

Mech Auto Adv Journey
25-0342
WG53 PFT LL
Anchorage

Mech Auto Adv Journey
25-0305
WG53 PFT LL
Anchorage

Mech Auto Adv Journey
25-0306
WG53 PFT LL
Anchorage

Mech Auto Adv Journey
25-0327
WG53 PFT LL
Palmer

Mech Auto Adv Journey
25-0328
WG53 PFT LL
Palmer

Mech Auto Sub Journey
25-1514
WG56 PFT LL
Anchorage

Mech Auto Adv Journey
25-3360
WG53 PFT LL
Anchorage

Mech Auto Adv Journey
25-0308
WG53 PFT LL
Anchorage

Mech Auto Adv Journey
25-0309
WG53 PFT LL
Anchorage

Mech Auto Adv Journey
25-0615
WG53 PFT LL
Palmer

Mech Auto Adv Journey
25-3362
WG53 PFT LL
Palmer

Administrative Assistant II
25-0292
R14 PFT SS
Anchorage

Stock & Parts Svcs Lead
25-0296
WG53 PFT LL
Anchorage

Mech Auto Adv Journey
25-0310
WG53 PFT LL
Anchorage

Mech Auto Adv Journey
25-0864
WG53 PFT LL
Anchorage

Mech Auto Adv Journey
25-0334
WG53 PFT LL
Silvertip

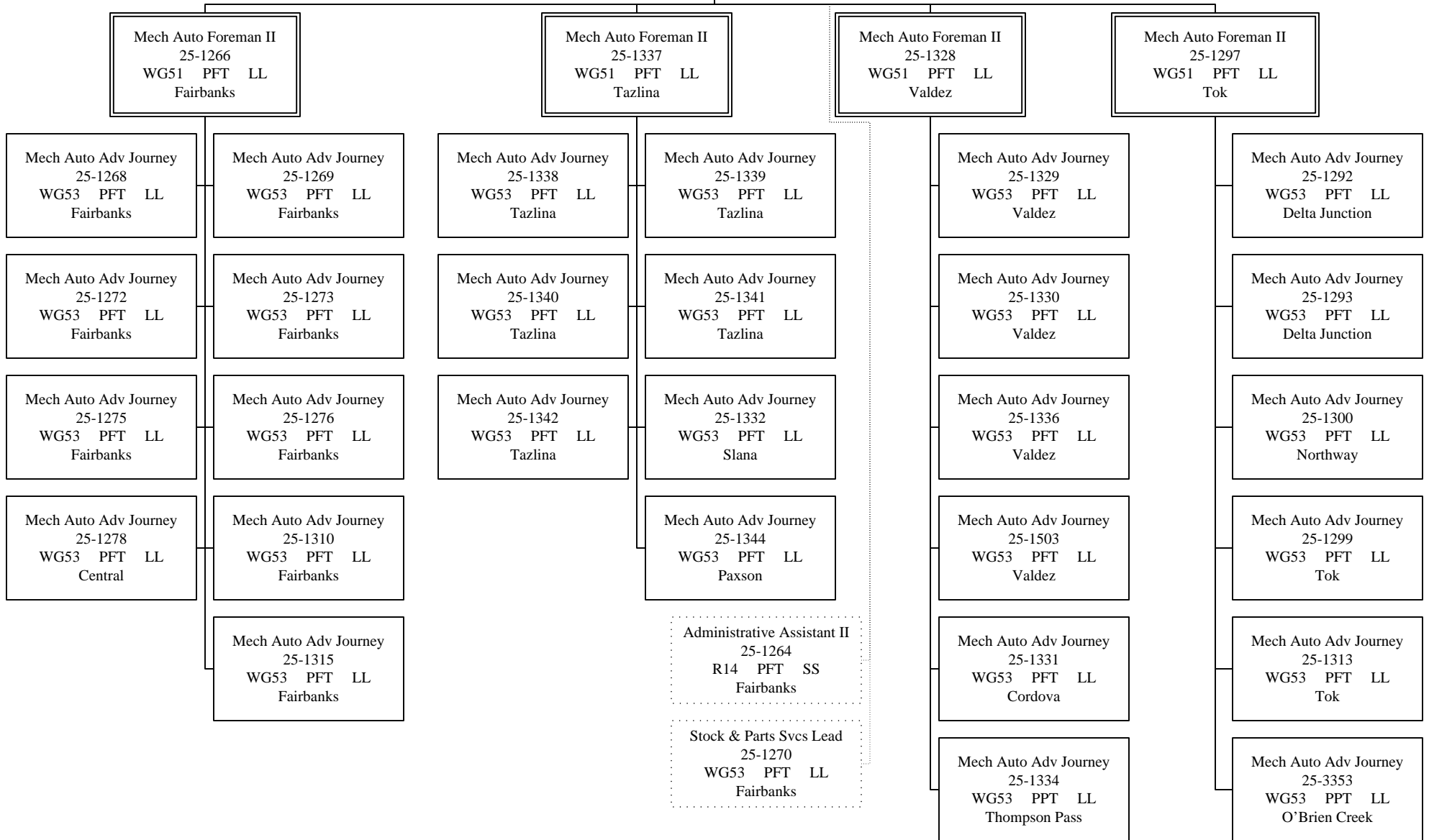
Mech Auto Adv Journey
25-0344
WG53 PFT LL
Chulitna

Mech Auto Adv Journey
25-0780
WG53 PFT LL
McGrath

**FY13 Governor's
RDU: State Equipment Fleet
Component: State Equipment Fleet
Component Total: 165
Page Total: 32**

Equip. Fleet District Manager
25-1262
WG20 PFT SS
Fairbanks

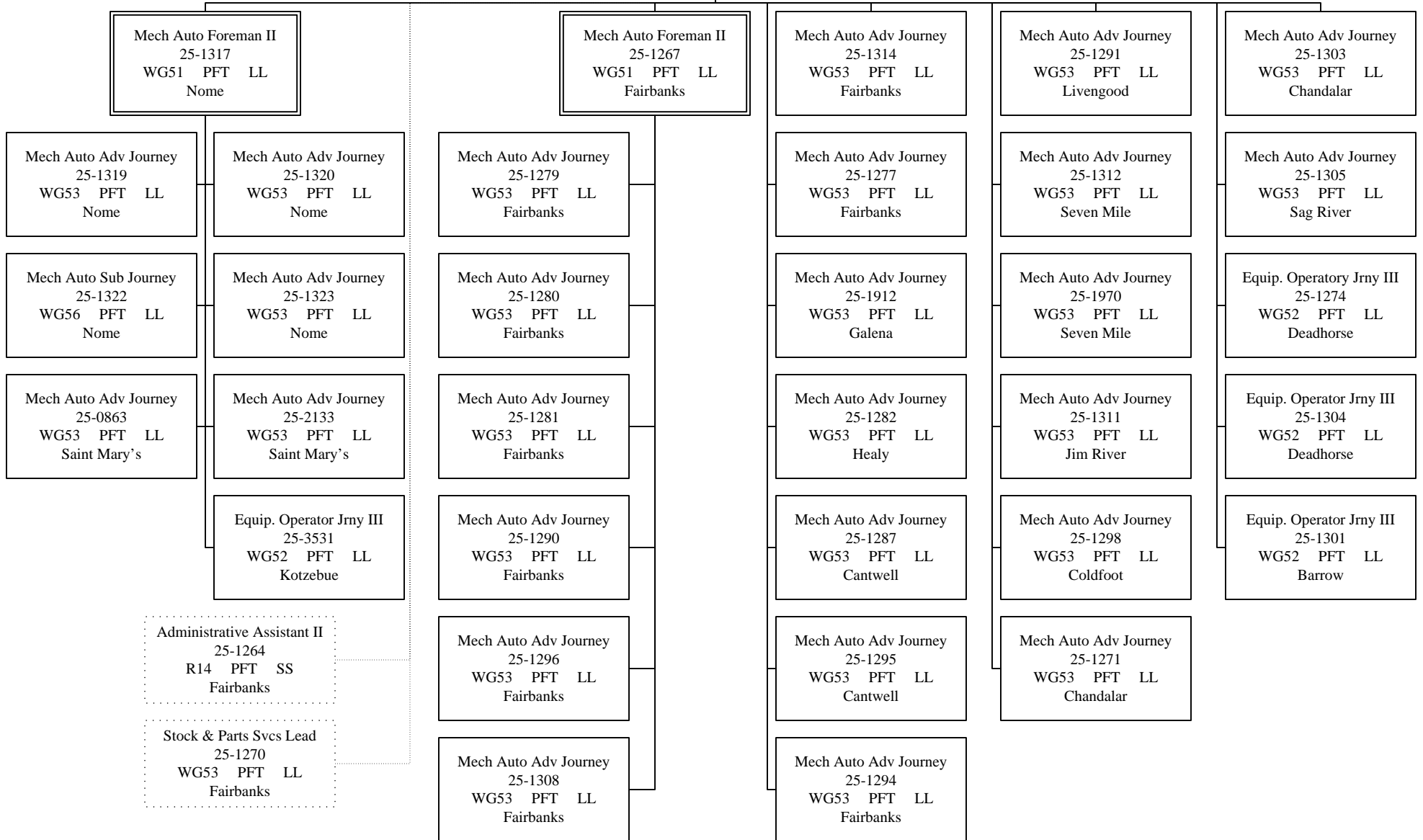
State Equipment Fleet Manager
25-0470
R23 PFT SS
Anchorage



**FY13 Governor's
 RDU: State Equipment Fleet
 Component: State Equipment Fleet
 Component Total: 165
 Page Total: 33**

Equip. Fleet District Manager
 25-1307
 R20 PFT SS
 Fairbanks

State Equipment Fleet Manager
 25-0470
 R23 PFT SS
 Anchorage



**FY13 Governor's
RDU: State Equipment Fleet
Component: State Equipment Fleet
Component Total: 165
Page Total: 12**

Equip. Fleet District Manager
25-2267
R20 PFT SS
Juneau

State Equipment Fleet Manager
25-0470
R23 PFT SS
Anchorage

Mech Auto Foreman I
25-3280
WG52 PFT LL
Juneau

Mech Auto Adv Journey
25-2271
WG53 PFT LL
Skagway

Mech Auto Adv Journey
25-2273
WG53 PFT LL
Haines

Equip. Operator Jrny III
25-2274
WG52 PFT LL
Wrangell

Mech Auto Adv Journey
25-2275
WG53 PFT LL
Ketchikan

Equip. Operator Jrny III
25-2277
WG52 PFT LL
Petersburg

Mech Auto Adv Journey
25-0331
WG53 PFT LL
Juneau

Equip. Operator Jrny III
25-2278
WG52 PFT LL
Yakutat

Mech Auto Adv Journey
25-2281
WG53 PFT LL
Klawock

Equip. Operator Jrny III
25-3533
WG52 PFT LL
Sitka

Mech Auto Adv Journey
25-2270
WG53 PFT LL
Juneau

Stock & Parts Svcs Lead
25-2272
WG53 PFT LL
Juneau

Mech Auto Adv Journey
25-2276
WG53 PFT LL
Juneau

**FY13 Governor's
RDU: State Equipment Fleet
Component: State Equipment Fleet
Component Total: 165
Page Total: 20**

