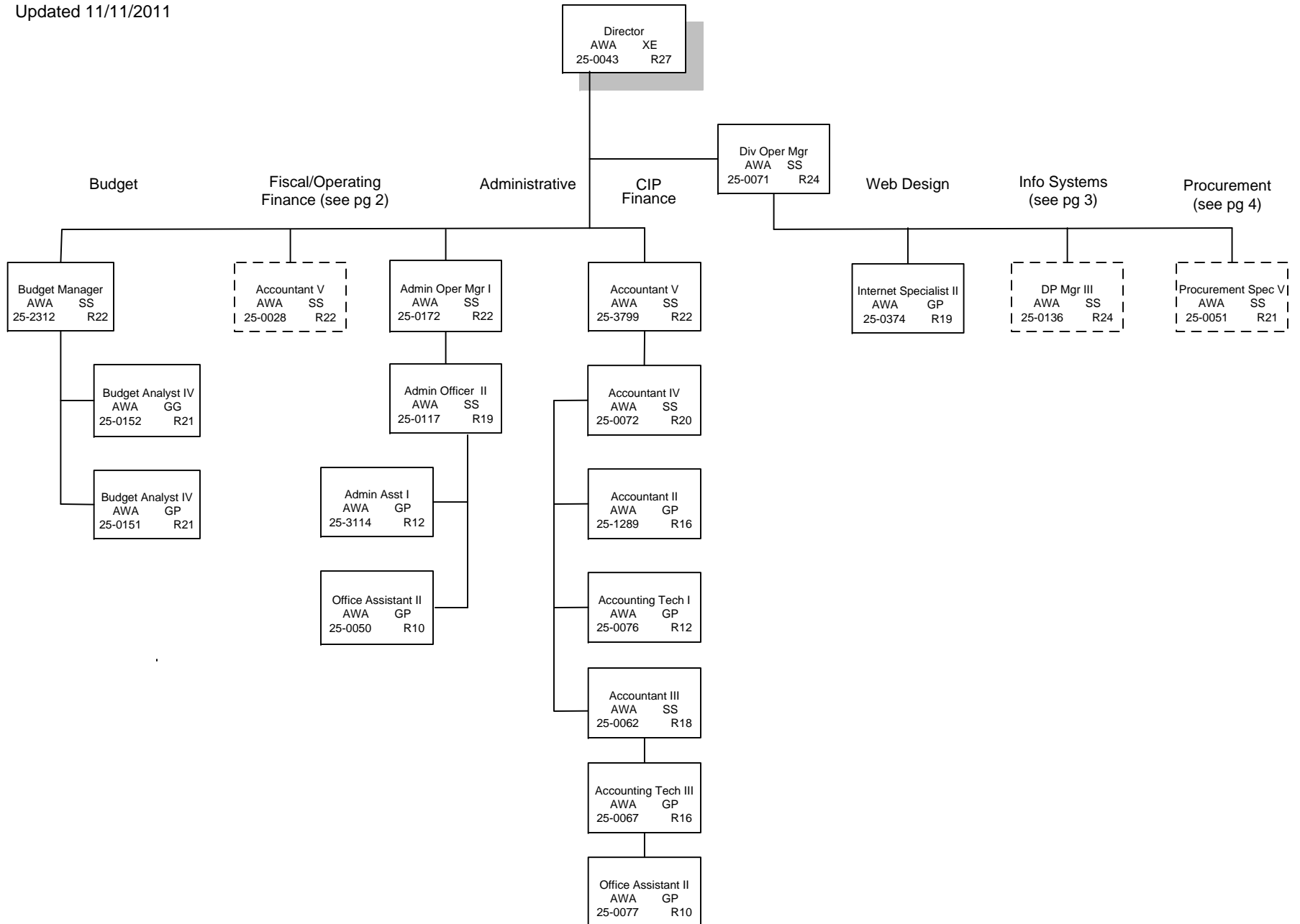


Department of Transportation & Public Facilities
 RDU: Administrative Services
 Component: Statewide Administrative Services
 FY13 Governor
 Updated 11/11/2011



Department of Transportation and Public Facilities
 RDU: Administrative Services
 COMPONENT: Statewide Administrative Services
 FY13 Governor
 Updated 11/11/2011

Director
 AWA XE
 25-0043 R27

Accountant V
 AWA SS
 25-0028 R22

