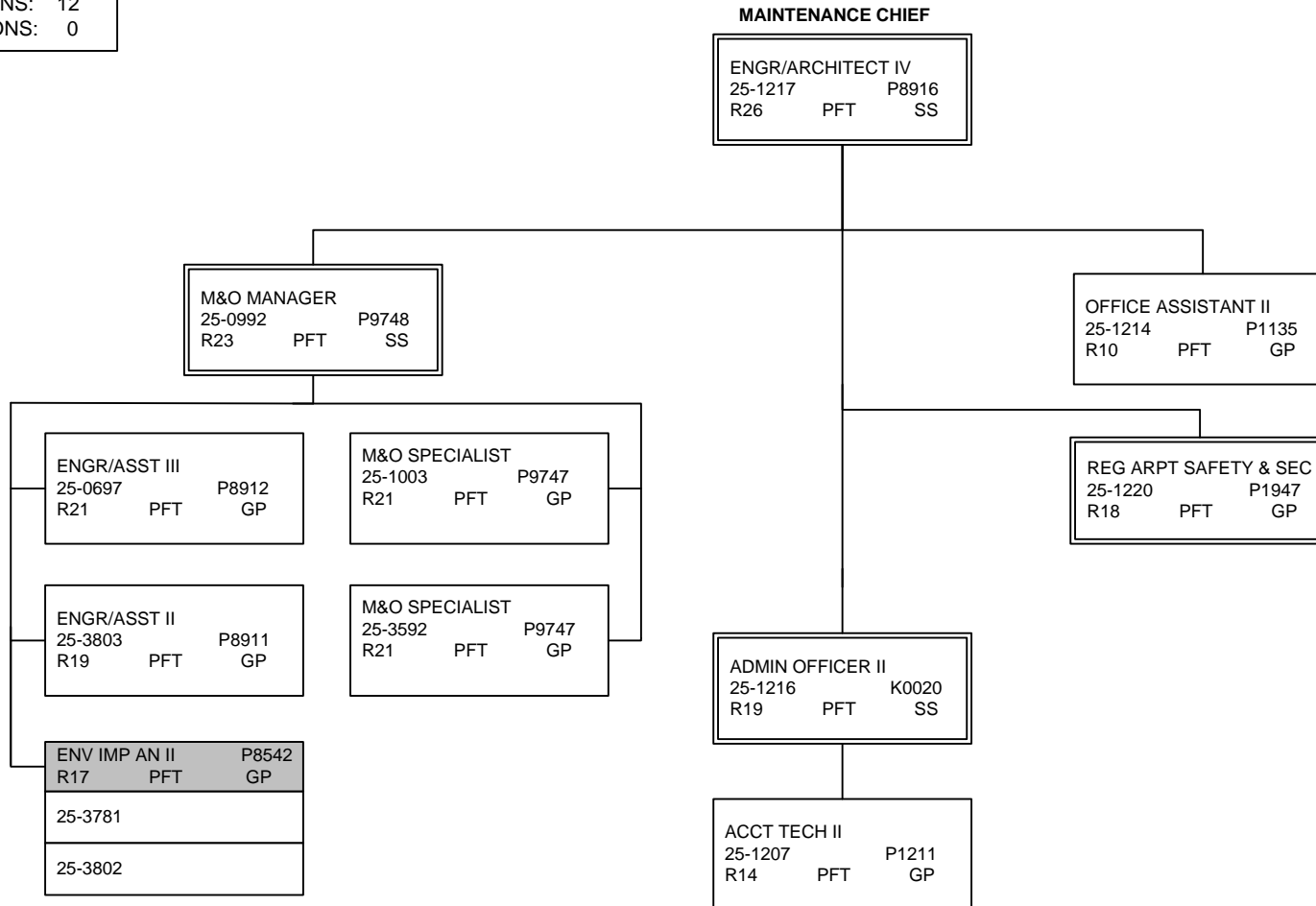


FY13 GOVERNOR'S OPERATING BUDGET
RDU: HIGHWAYS & AVIATION
COMPONENT: CENTRAL REGION HIGHWAYS & AVIATION (564)

COMPONENT TOTAL:	238
FULLTIME POSITIONS:	212
PARTTIME POSITIONS:	10
NONPERM POSITIONS:	16
PAGE TOTAL:	12
FULLTIME POSITIONS:	12
PARTTIME POSITIONS:	0

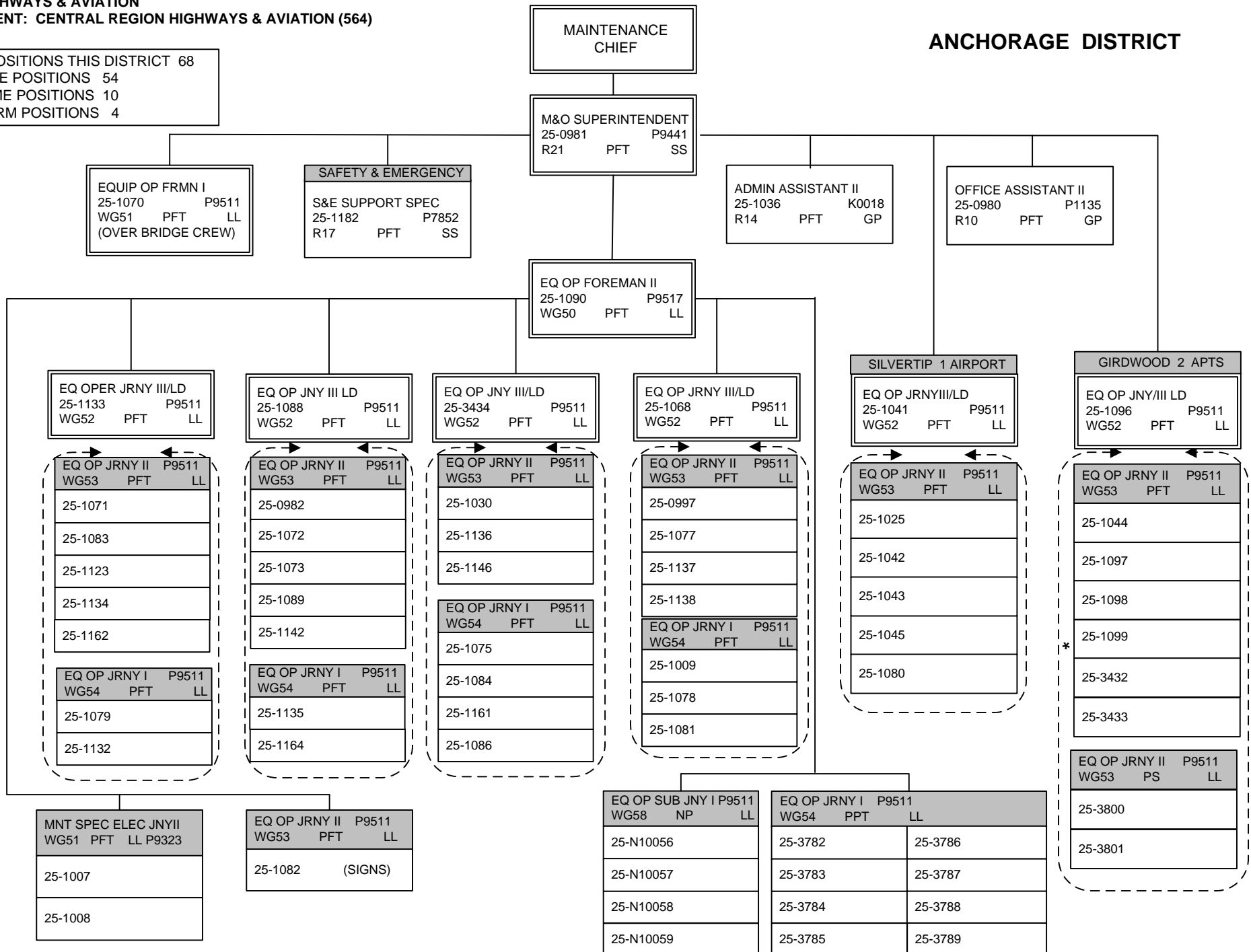
M&O ADMINISTRATION



FY13 GOVERNOR'S OPERATING BUDGET
RDU: HIGHWAYS & AVIATION
COMPONENT: CENTRAL REGION HIGHWAYS & AVIATION (564)

ANCHORAGE DISTRICT

TOTAL POSITIONS THIS DISTRICT 68
 FULL TIME POSITIONS 54
 PART-TIME POSITIONS 10
 NON- PERM POSITIONS 4



* PCN 25-1099: Works under supervision of PCN 25-1070 Bridge for 6-months of the year and under supervision of PCN 25-1182 Avalanche for 6-months

FY13 GOVERNOR'S OPERATING BUDGET
RDU: HIGHWAYS & AVIATION
COMPONENT: CENTRAL REGION HIGHWAYS & AVIATION (564)

MATSU DISTRICT

TOTAL POSITIONS THIS DISTRICT 39
 FULL TIME POSITIONS 35
 NON PERM POSITIONS 4

MAINTENANCE CHIEF

M&O SUPERINTENDENT
 25-1187 P9441
 R21 PFT SS

MTN SPEC ELEC JNY II P9325
 WG51 PFT LL (DISTRICTWIDE)
 25-1102
 25-0549

ACCT TECH II
 25-0979 P1211
 R14 PFT GP

OFFICE ASSISTANT II
 25-0935 P1135
 R10 PFT GP

CASCADE 1 AIRPORT
 EQ OPER JNY III/LD
 25-1109 P9511
 WG52 PFT LL

CHULITNA 0 AIRPORTS
 EQ OPER JNY III/LD
 25-1104 P9511
 WG52 PFT LL

PALMER 3 AIRPORTS
 EQ OPER FRMN I
 25-1046 P9511
 WG51 PFT LL

MCGRATH 6 AIRPORTS
 EQ OPER FRMN I
 25-1150 P9511
 WG51 PFT LL

WILLOW 1 AIRPORT
 EQ OPER JNY III/LD
 25-1100 P9511
 WG52 PFT LL

EQ OPER JNY II P9511
 WG53 PFT LL
 25-1110
 25-1111
 25-1112

EQ OPER JNY II P9511
 WG53 PFT LL
 25-1050
 25-1107
 25-1108
 25-3649

EQ OP JNY III LD
 25-1055 P9511
 WG52 PFT LL

EQ OPER JRNY II P9511
 WG53 PFT LL

25-0985	25-1056
25-1037	25-1057
25-1047	25-1105
25-1048	25-1129
25-1052	25-1165
25-1053	25-1166

EQ OPER JRNY I P9511
 WG58 NP LL

25-N09025	25-N09026
25-N09027	25-N09028

TALKEETNA 1 AIRPORT
 EQ OPER JNY III/LD
 25-1143 P9511
 WG52 PFT LL

EQ OPER JNY II P9511
 25-1106 PFT LL
 WG53

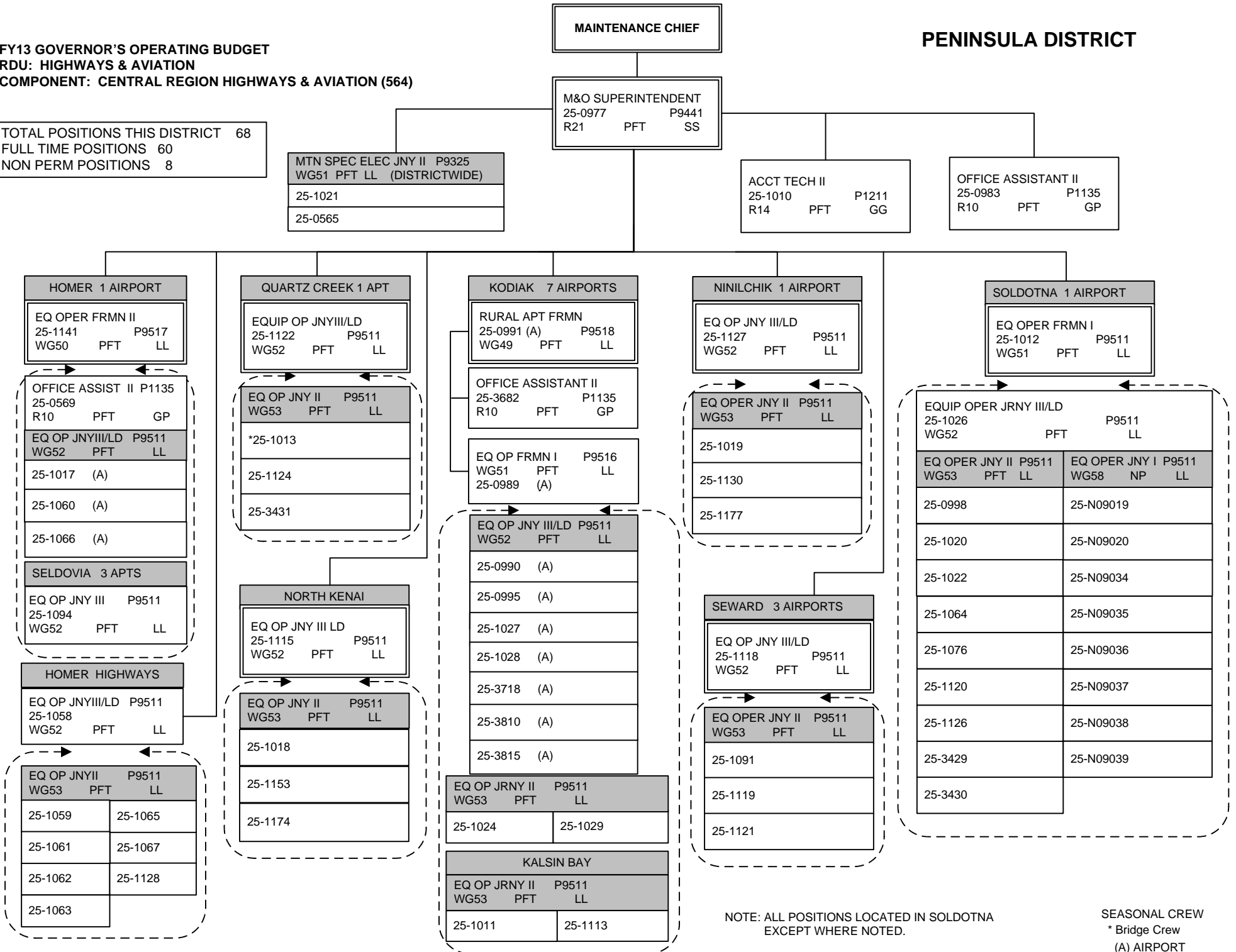
EQ OPER JNY II P9511
 WG53 PFT LL
 25-1101
 25-1103
 25-1167

NOTE: ALL POSITIONS LOCATED IN PALMER EXCEPT WHERE NOTED.

**FY13 GOVERNOR'S OPERATING BUDGET
RDU: HIGHWAYS & AVIATION
COMPONENT: CENTRAL REGION HIGHWAYS & AVIATION (564)**

PENINSULA DISTRICT

TOTAL POSITIONS THIS DISTRICT 68
FULL TIME POSITIONS 60
NON PERM POSITIONS 8



NOTE: ALL POSITIONS LOCATED IN SOLDOTNA EXCEPT WHERE NOTED.

SEASONAL CREW
* Bridge Crew
(A) AIRPORT

FY13 GOVERNOR'S OPERATING BUDGET
RDU: HIGHWAYS & AVIATION
COMPONENT: CENTRAL REGION HIGHWAYS & AVIATION (564)

SOUTHWEST DISTRICT

TOTAL POSITIONS THIS DISTRICT 51
 FULL TIME POSITIONS 51
 NON-PERM POSITIONS 0

MAINTENANCE CHIEF

M&O SUPERINTENDENT
 25-0974 P9441
 R21 PFT SS

ADMIN ASSISTANT II
 25-1169 K0018
 R14 PFT GP

OFFICE ASSISTANT II
 25-1031 P1135
 R10 PFT GP

ANIAK 7 AIRPORTS
 EQ OP FOREMAN I (A)
 25-1000 P9511
 WG51 PFT LL

COLD BAY 5 AIRPORTS
 RURAL ARPT FRMN (A)
 25-1032 P9518
 WG49 PFT LL

DILLINGHAM 12 APTS
 RURAL ARPT FRMN (A)
 25-1038 P9518
 WG49 PFT LL

ILIAMNA 5 AIRPORTS
 EQ OP FOREMAN II (A)
 25-1147 P9517
 WG50 PFT LL

KING SALMON 12 APTS
 RURAL ARPT FRMN (A)
 25-0996 P9518
 WG49 PFT LL

UNALASKA 2 APTS
 RURAL ARPT FRMN (A)
 25-1095 P9518
 WG49 PFT LL

EQ OP JRNY II (A)
 25-1152 P9511
 WG53 PFT LL

EQ OP JNY III/LD P9511
 WG52 PFT LL

25-1033 (A)

25-3474 (A)

25-3482 (A)

OFFICE ASSISTANT II (A)
 25-1156 P1135
 R10 PFT GP

EQ OP JNY III/LD P9511
 WG52 PFT LL

25-1148 (A)

25-1159 (A)

OFFICE ASSISTANT III (A)
 25-0993 K0077
 R11 PFT GP

EQ OP JNY III/LD P9511
 WG52 PFT LL

25-1184 (A)

25-3719 (A)

BETHEL 27 AIRPORTS
 APT OPER SPEC (A)
 25-3573 P1964
 R19 PFT SS

OFFICE ASSIST II (A)
 25-1185 P1135
 R10 PFT GP

RURAL AIRPORT FOREMAN (A)
 25-1004 P9518
 WG49 PFT LL

EQUIP OPER JRNY III/LD P9511
 WG52 PFT LL

25-1001 (A)	25-1035 (A)	25-3811 (A)
25-1005 (A)	25-1085	25-3812 (A)
25-1006 (A)	25-3639 (A)	25-3813 (A)
25-1015 (A)	25-3640 (A)	25-3814 (A)

MAINT SPEC ELEC JRNY II (A)
 25-1183 P9325
 WG51 PFT LL

EQ OP JNY III/LD P9511
 WG52 PFT LL

25-1039 (A)

25-1087 (A)

25-1144 (A)

25-1145 (A)

25-3717 (A)

MTN SPC ELEC JNY II
 25-1051 P9325
 WG51 PFT LL

EQ OP JNY III/LD P9511
 WG52 PFT LL

25-0984 (A)

25-0986 (A)

25-0994 (A)

25-0999 (A)

25-1139 (A)

25-1140 (A)

25-1179 (A)

ADAK
 RURAL ARPT FRMN (A)
 25-3686 P9518
 WG49 PFT LL

EQ OP JNY III/LD P9511
 WG52 PFT LL

25-3687 (A)

25-3688 (A)

NOTE: POSITIONS LOCATED IN ANCHORAGE
 EXCEPT WHERE NOTED.
 (A) Airport