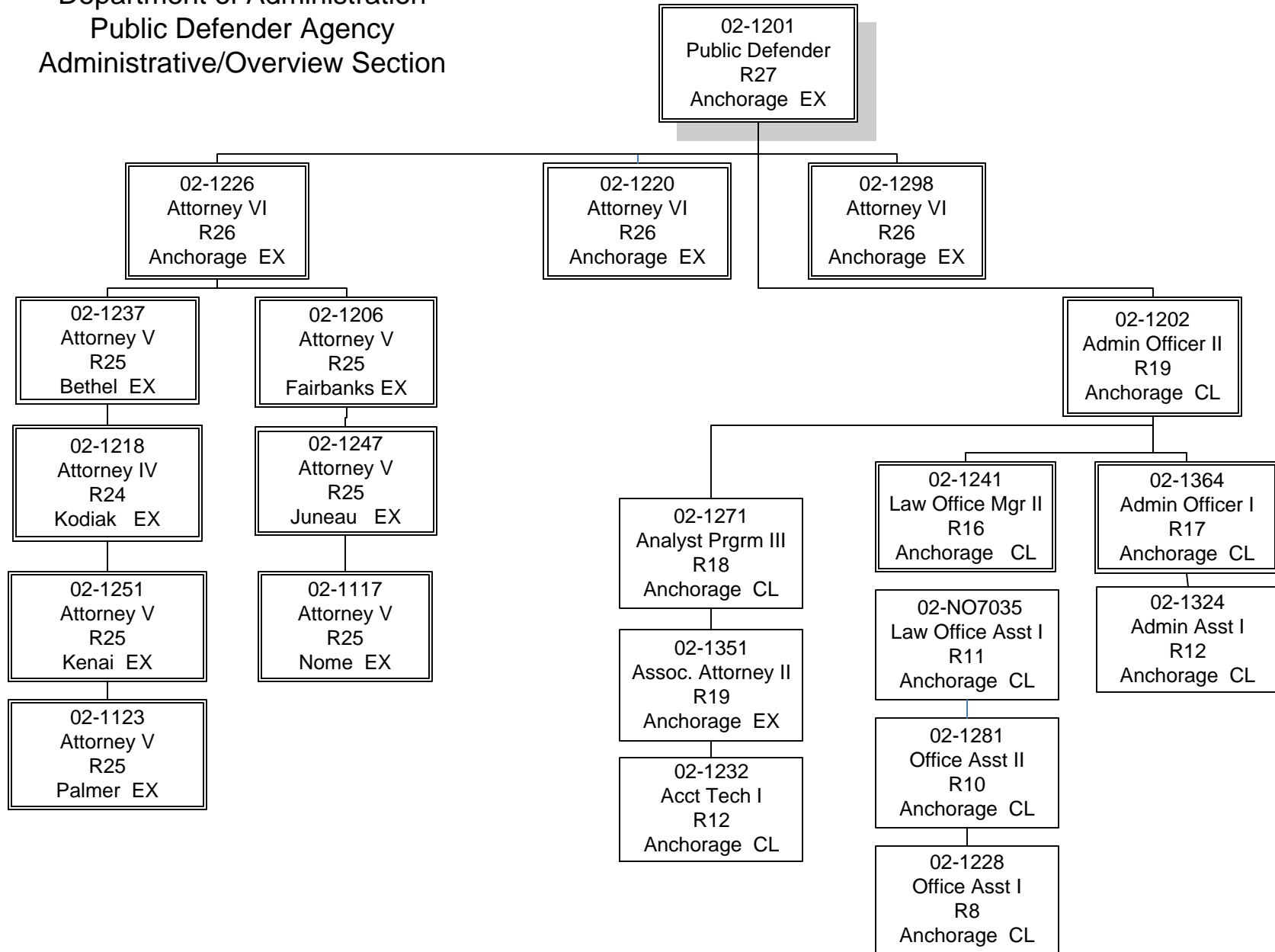
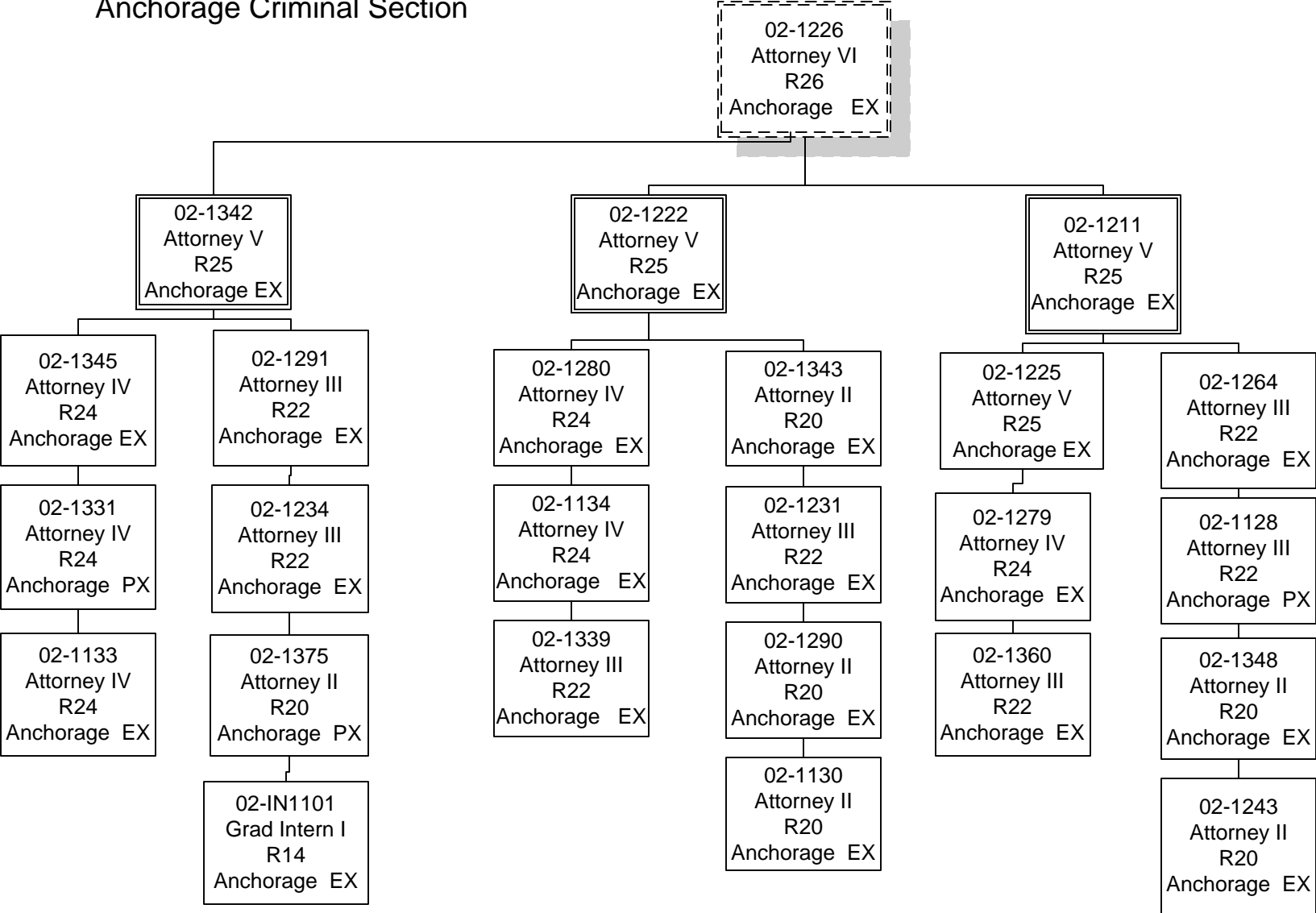


Department of Administration
 Public Defender Agency
 Administrative/Overview Section

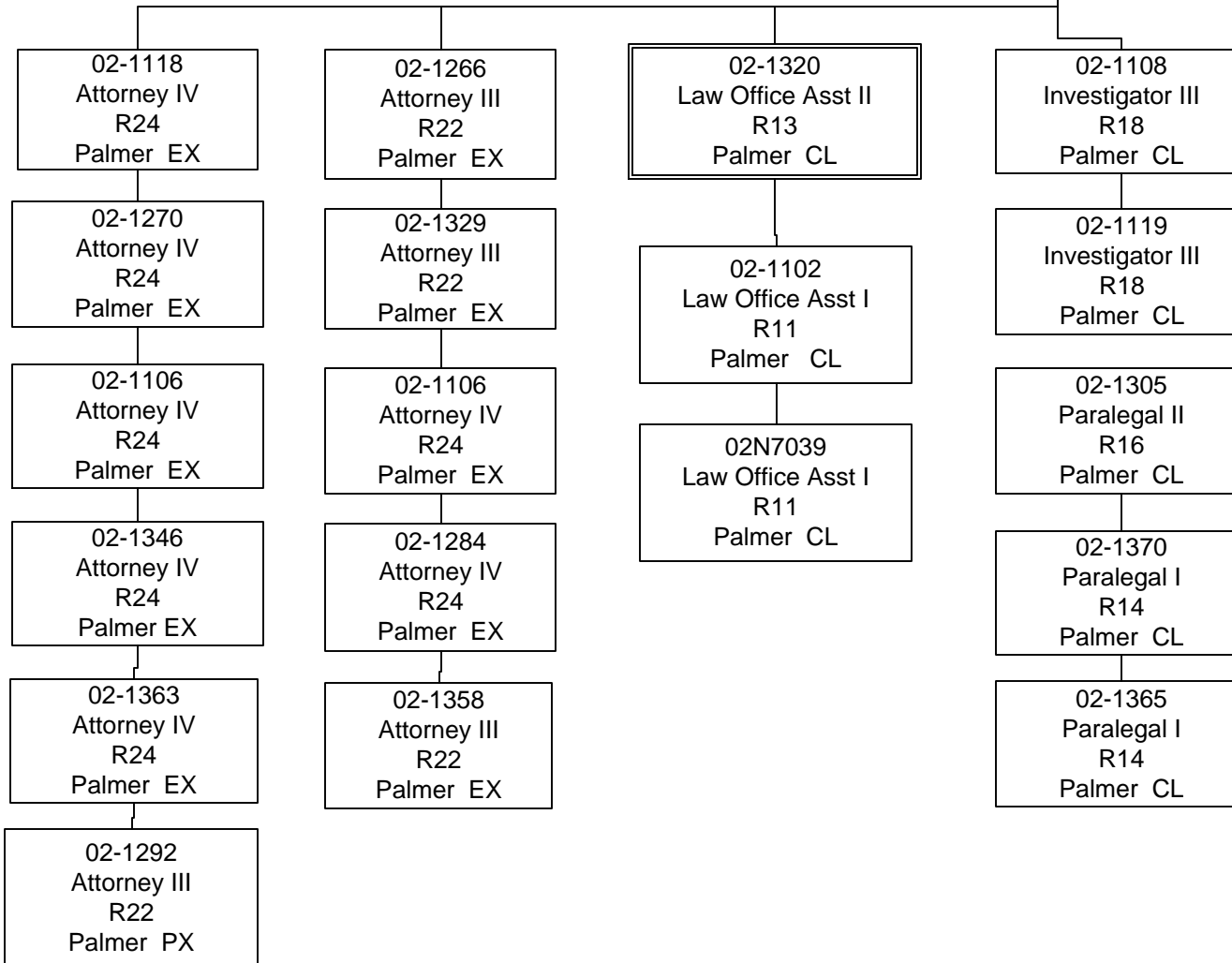


Department of Administration
Public Defender Agency
Anchorage Criminal Section

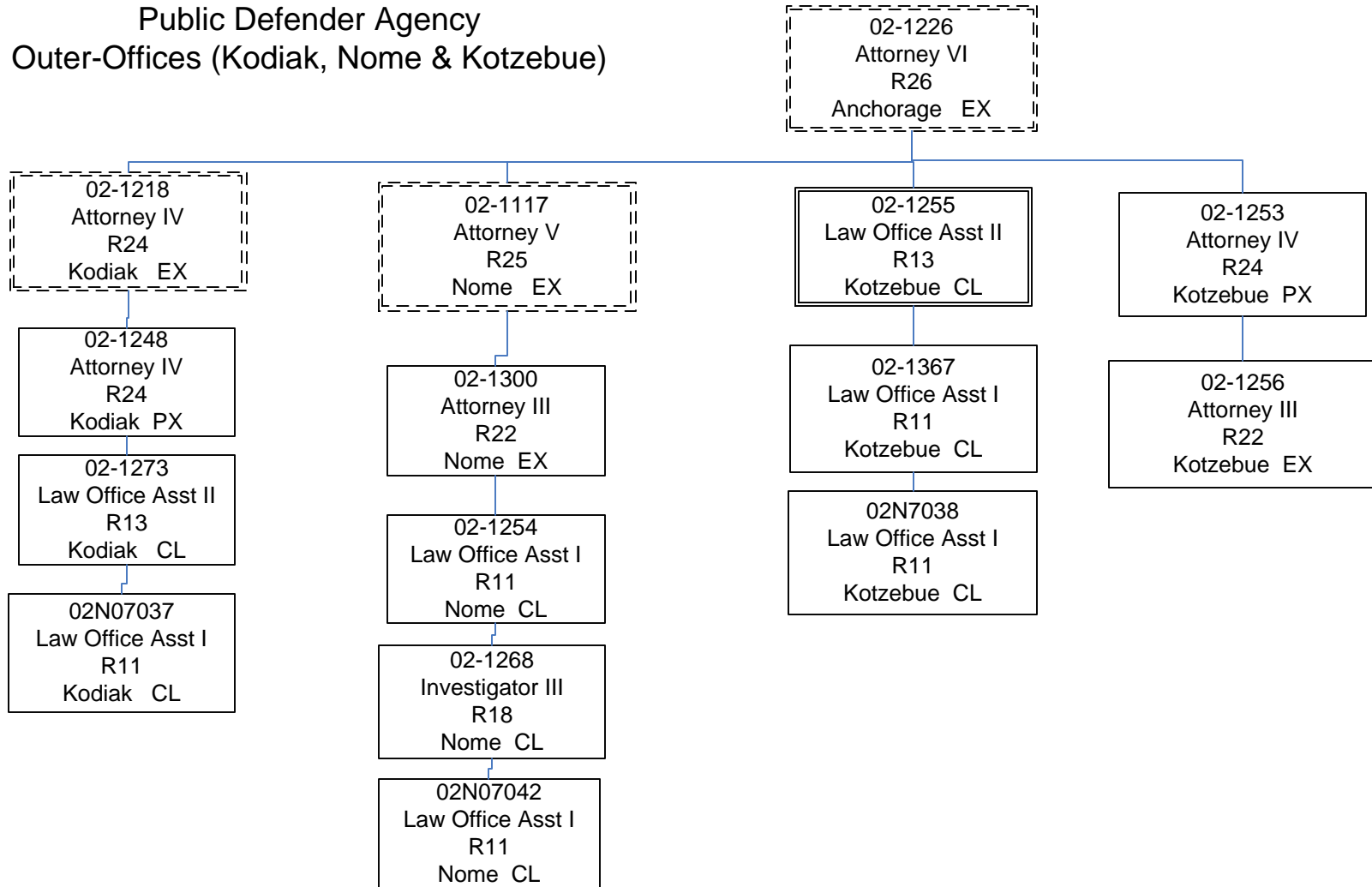


Department of Administration
Public Defender Agency
Outer-Offices (Palmer)

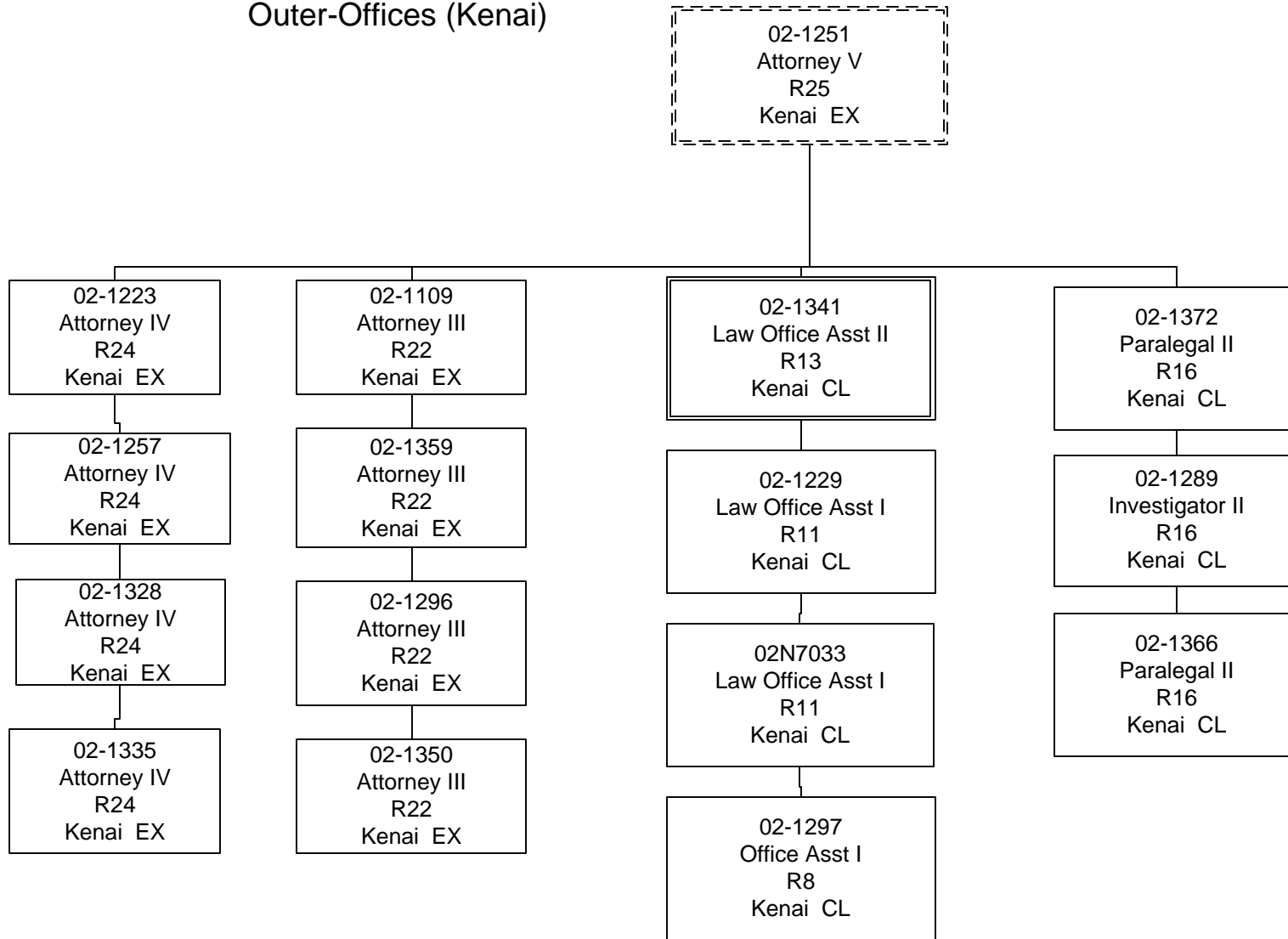
02-1123
Attorney V
R25
Palmer CL



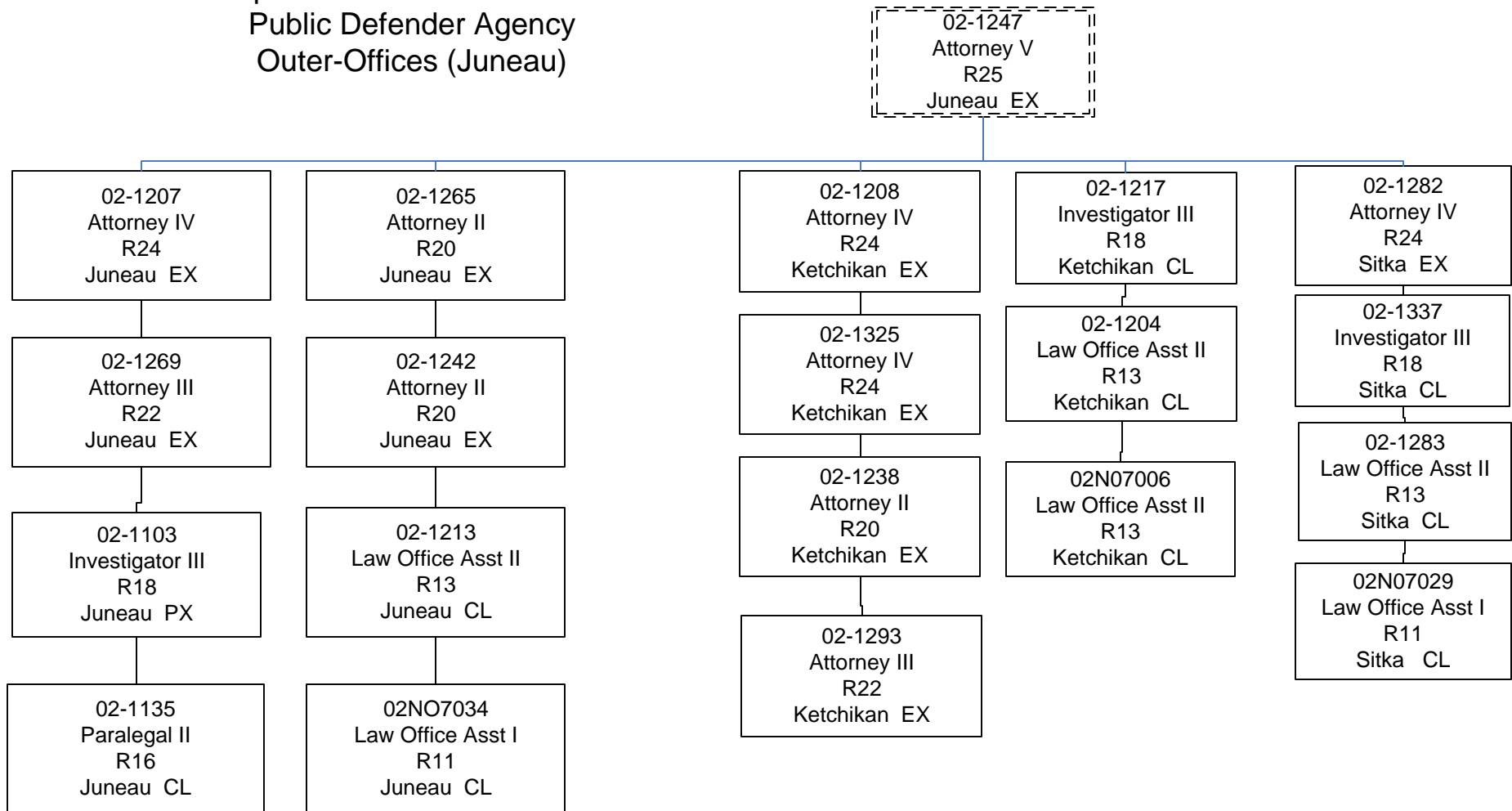
Department of Administration
Public Defender Agency
Outer-Offices (Kodiak, Nome & Kotzebue)



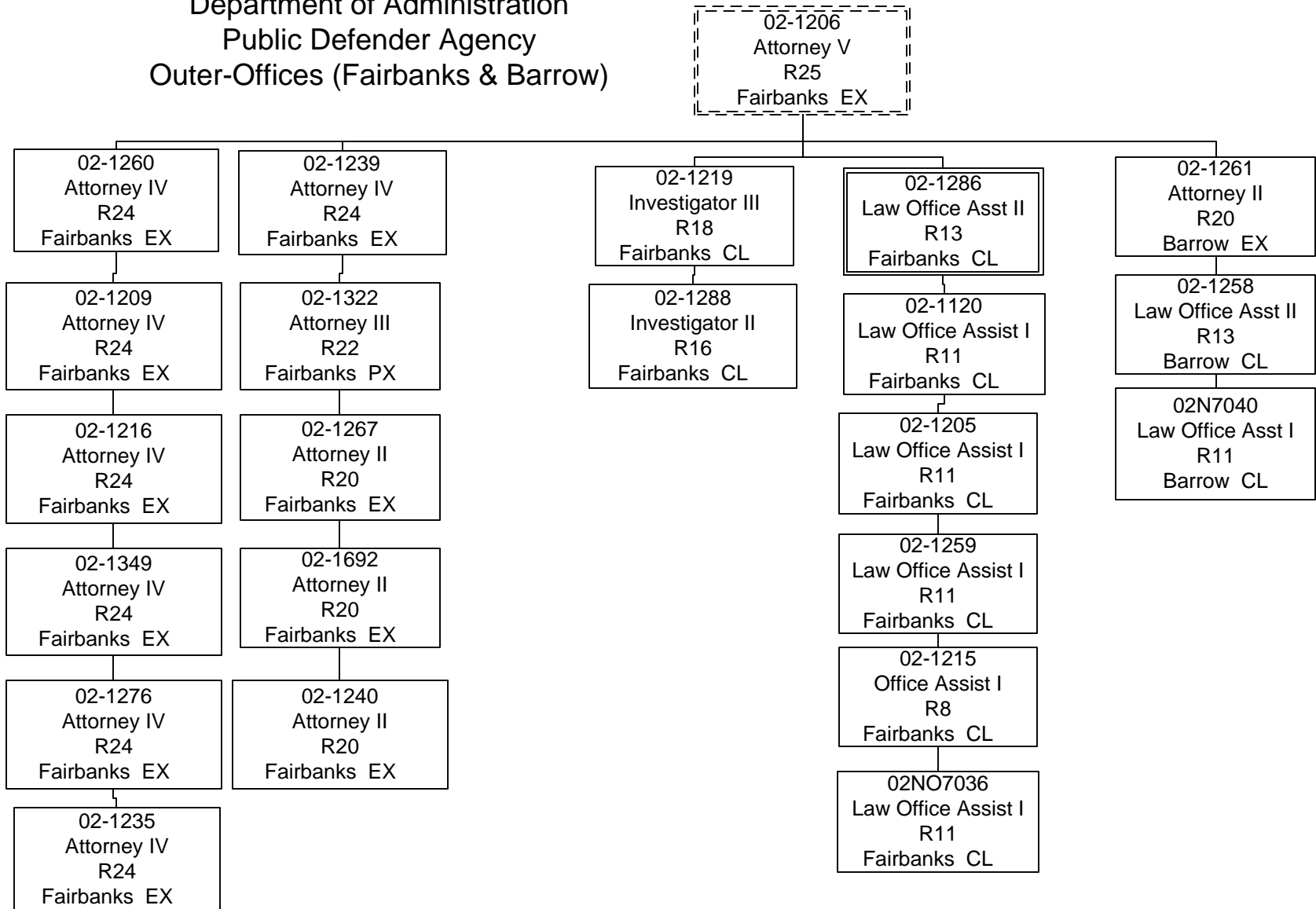
Department of Administration
Public Defender Agency
Outer-Offices (Kenai)



Department of Administration
Public Defender Agency
Outer-Offices (Juneau)



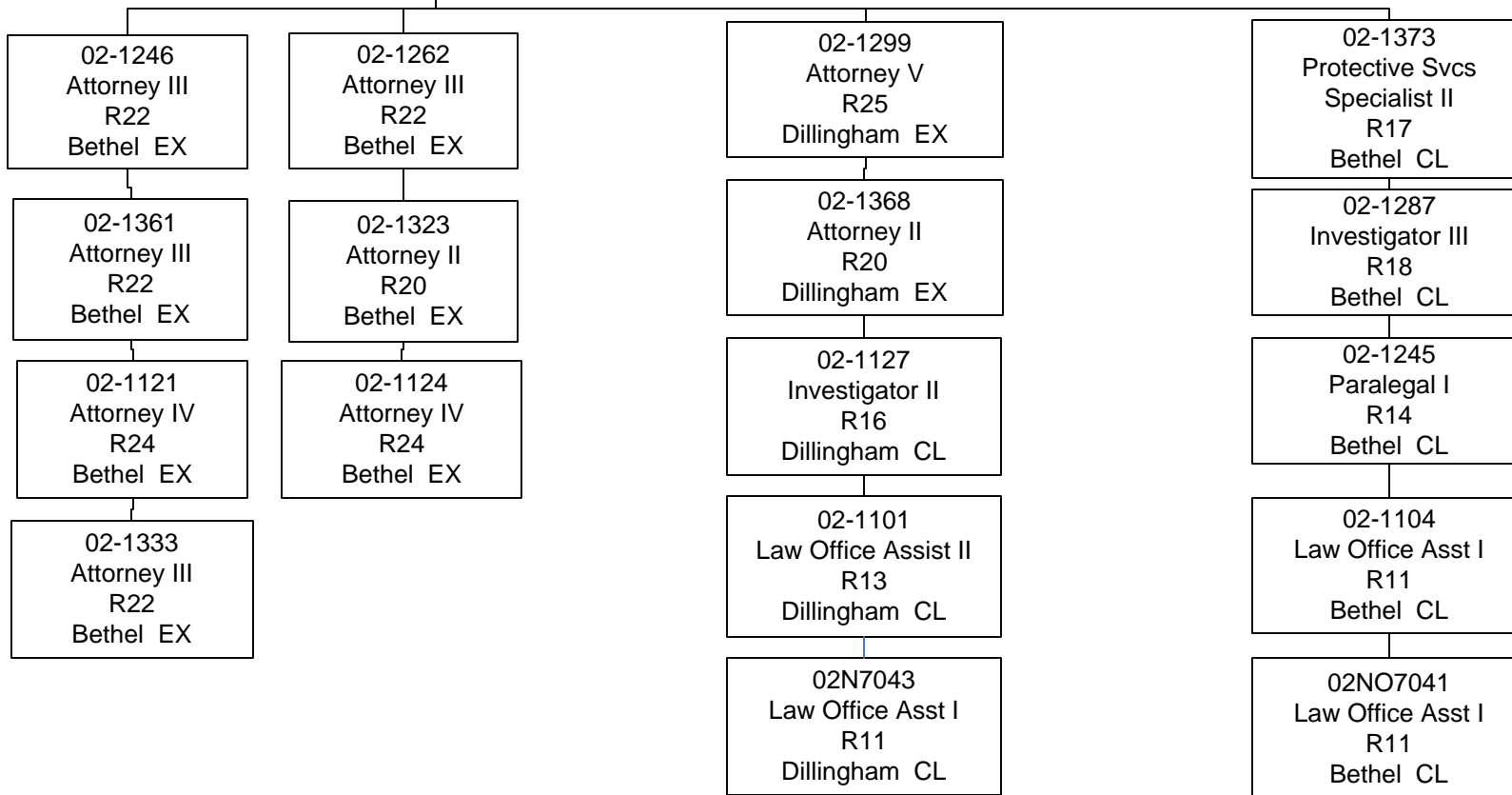
Department of Administration
Public Defender Agency
Outer-Offices (Fairbanks & Barrow)



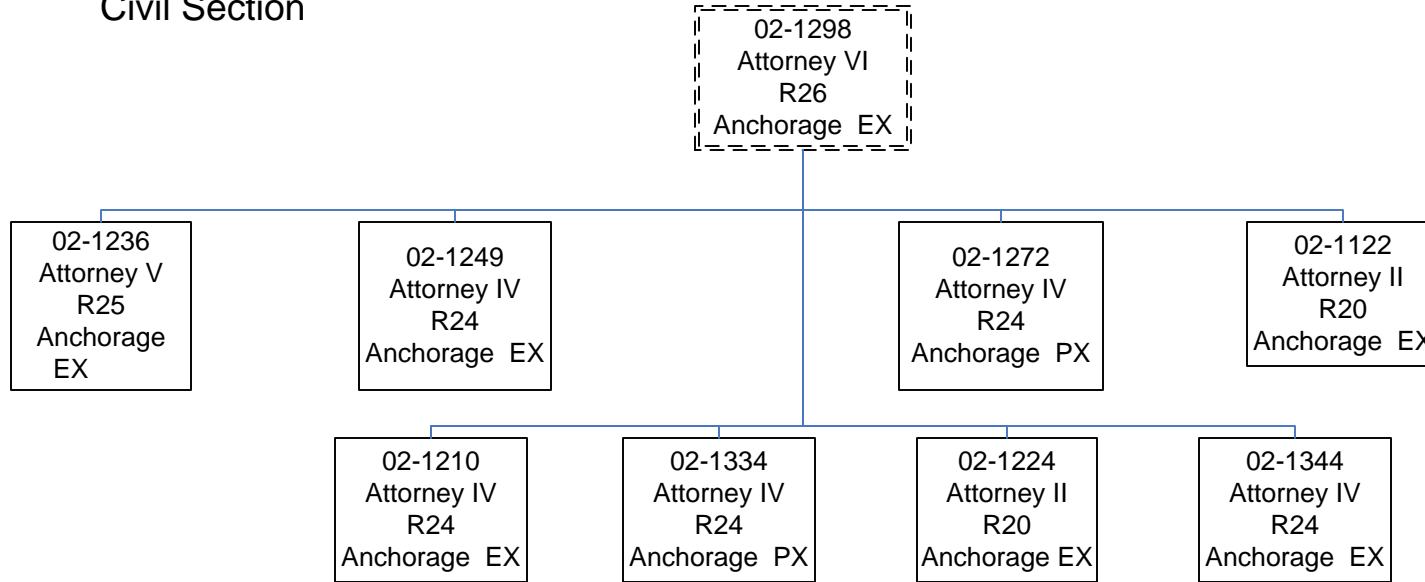
Department of Administration
Public Defender Agency
Outer-Offices (Bethel & Dillingham)

02-1226
Attorney VI
R 26
Anchorage EX

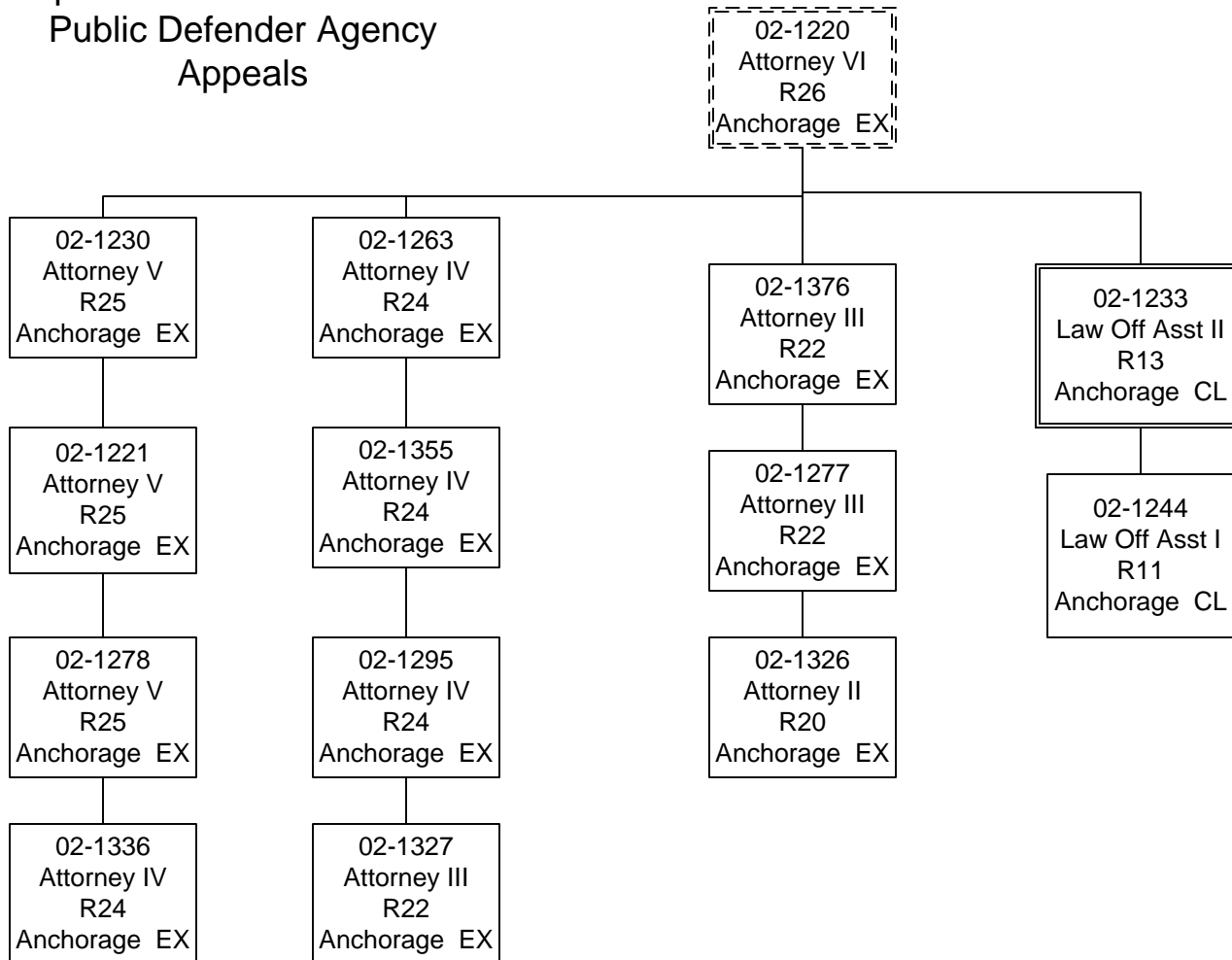
02-1237
Attorney V
R25
Bethel EX



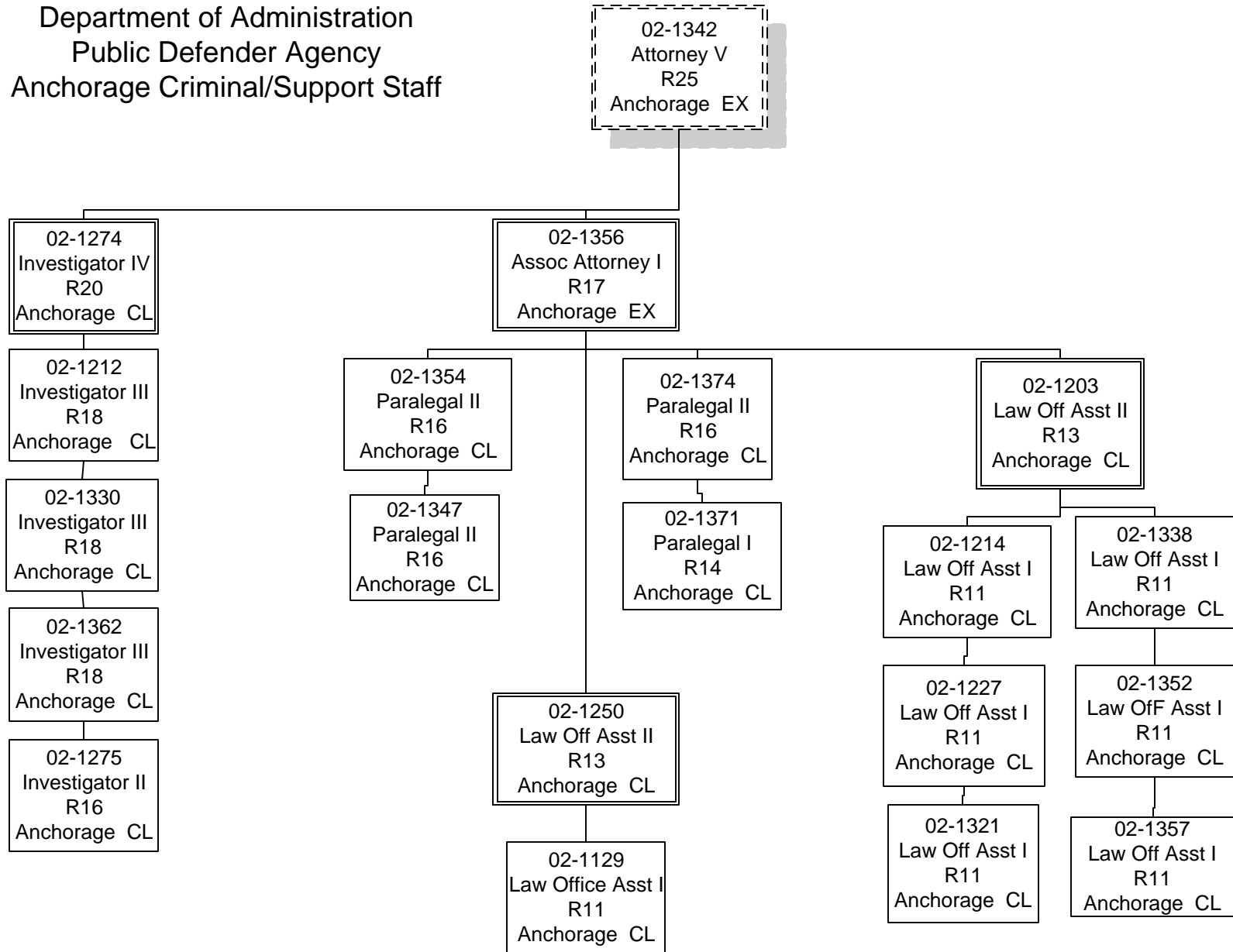
Department of Administration
Public Defender Agency
Civil Section



Department of Administration
Public Defender Agency
Appeals



Department of Administration
Public Defender Agency
Anchorage Criminal/Support Staff



Department of Administration
Public Defender Agency
Outer-Offices (Palmer)

02-1123
Attorney V
R25
Palmer CL

