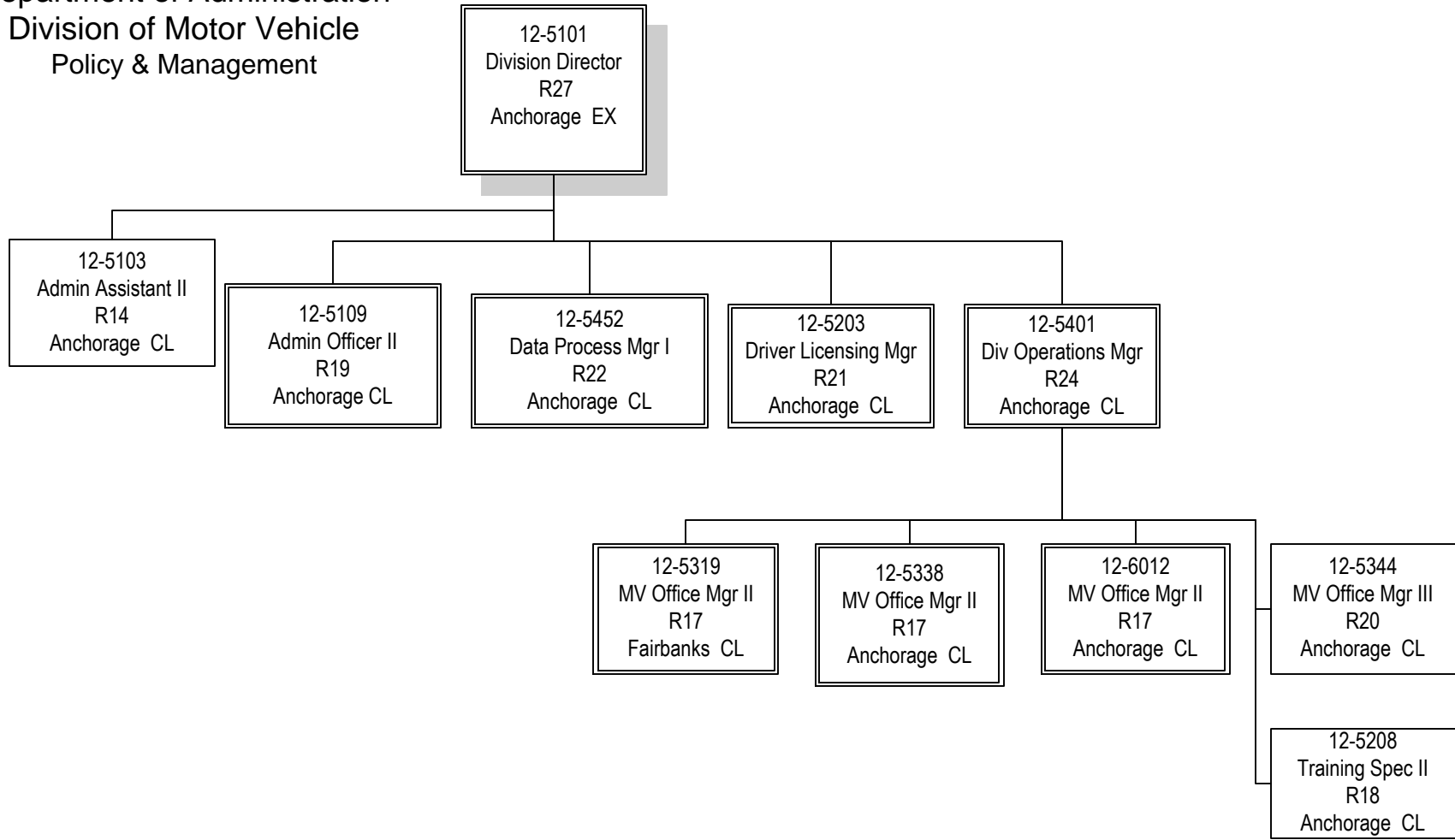
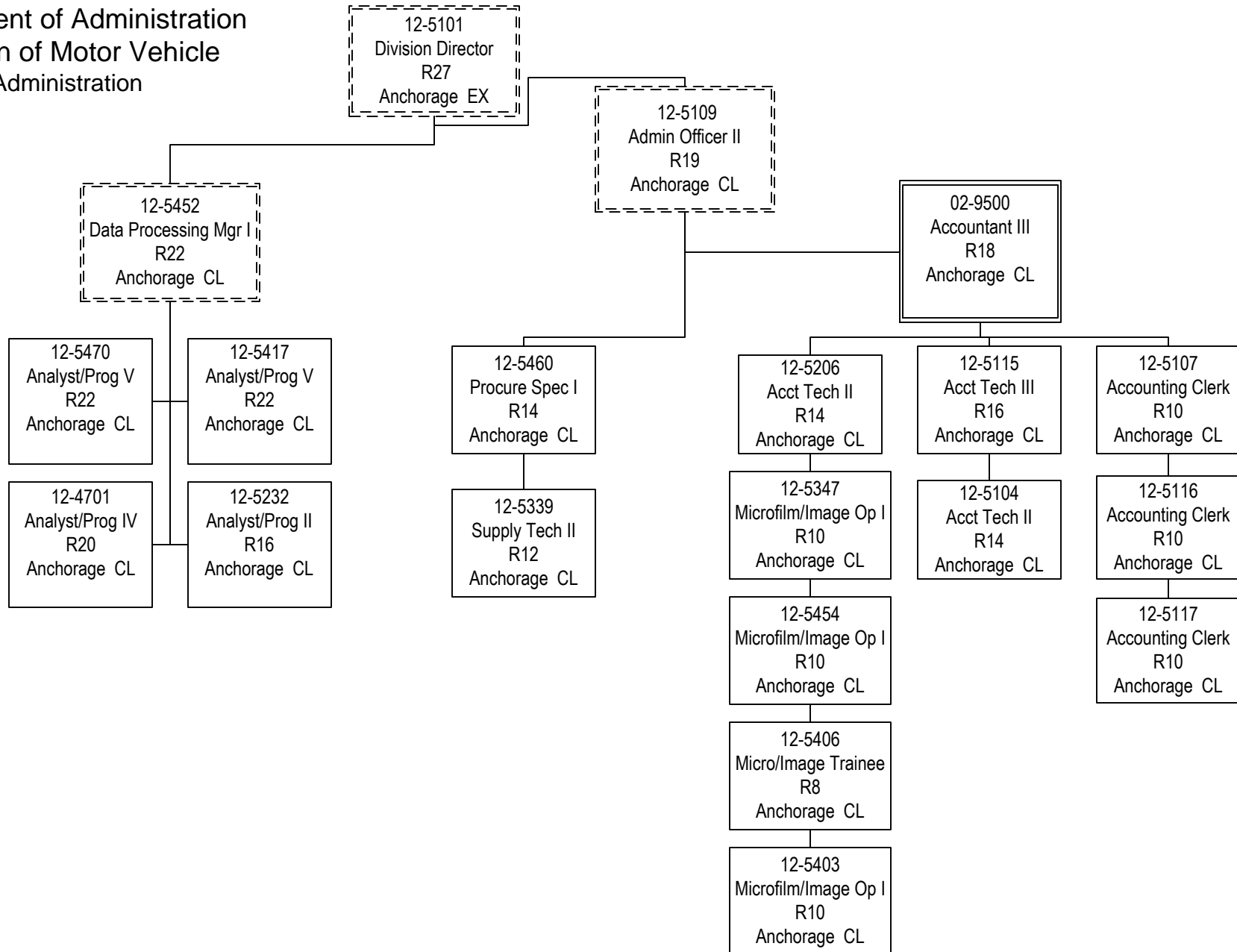


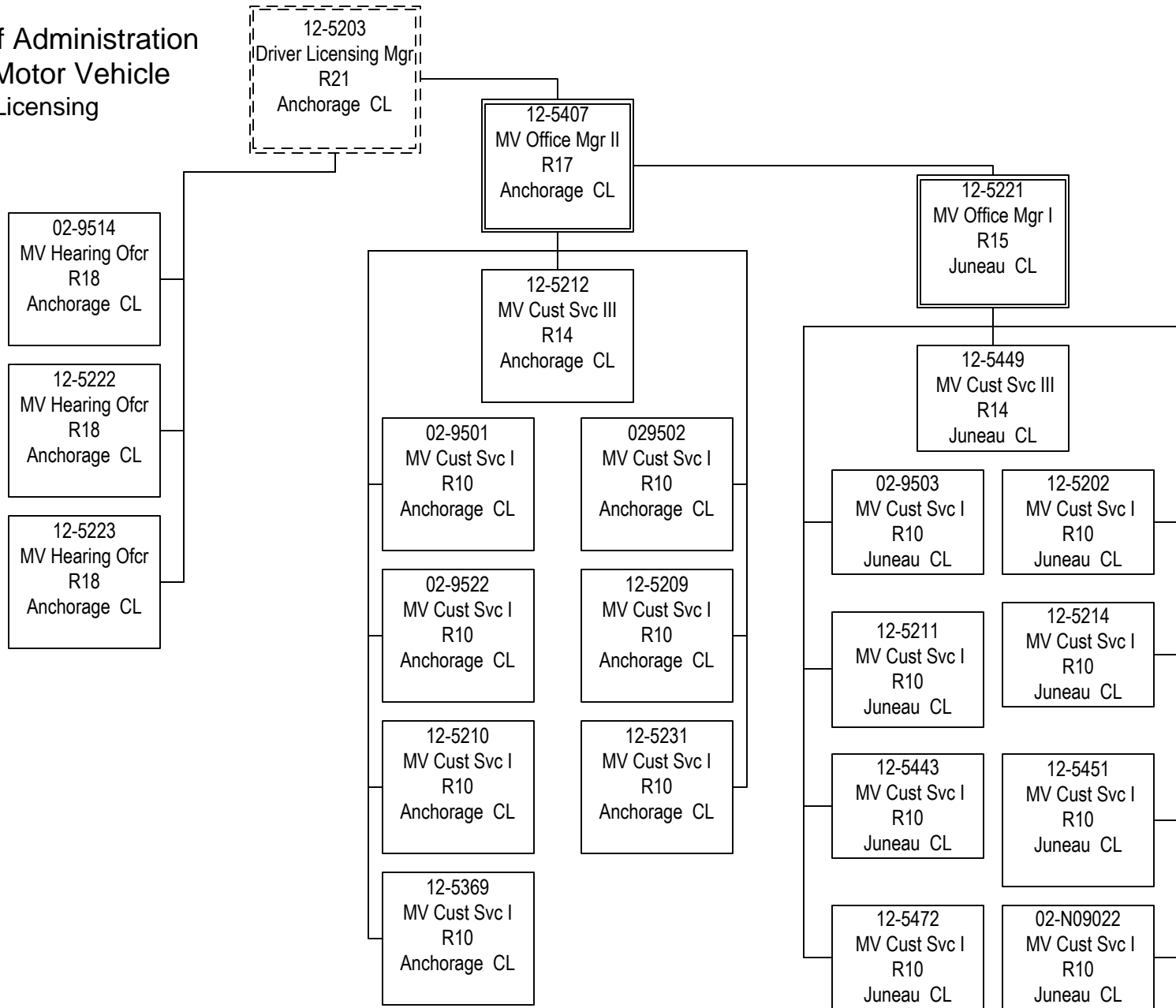
Department of Administration
Division of Motor Vehicle
Policy & Management



Department of Administration
 Division of Motor Vehicle
 Administration



Department of Administration
Division of Motor Vehicle
Driver Licensing



Department of Administration
 Division of Motor Vehicle
 Main Anchorage Office

12-5338
 MV Office Mgr II
 R17
 Anchorage CL

12-5356
 MV Office Mgr I
 R15
 Anchorage CL

12-5348
 MV Office Mgr I
 R15
 Anchorage CL

12-5444
 MV Office Mgr I
 R15
 Anchorage CL

12-5382
 MV Office Mgr I
 R15
 Anchorage CL

12-5118
 Accounting Clerk
 R10
 Anchorage CL

12-5359
 MV Cust Svc III
 R14
 Anchorage CL

12-5379
 MV Cust Svc III
 R14
 Anchorage CL

12-5114
 MV Cust Svc II
 R12
 Anchorage CL

12-5355
 MV Cust Svc II
 R12
 Anchorage CL

02-9517
 MV Cust Svc I
 R10
 Anchorage CL

02-9519
 MV Cust Svc I
 R10
 Anchorage CL

02-9510
 MV Cust Svc I
 R10
 Anchorage CL

12-5119
 MV Cust Svc I
 R10
 Anchorage CL

12-5238
 MV Cust Svc I
 R10
 Anchorage CL

12-5305
 MV Cust Svc I
 R10
 Anchorage CL

12-5357
 MV Cust Svc II
 R12
 Anchorage CL

12-5360
 MV Cust Svc II
 R12
 Anchorage CL

02-9520
 MV Cust Svc I
 R10
 Anchorage CL

12-5350
 MV Cust Svc I
 R10
 Anchorage CL

12-5304
 MV Cust Svc I
 R10
 Anchorage CL

12-5325
 MV Cust Svc I
 R10
 Anchorage CL

12-5345
 MV Cust Svc I
 R10
 Anchorage CL

12-5372
 MV Cust Svc I
 R10
 Anchorage CL

12-5393
 MV Cust Svc II
 R12
 Anchorage CL

12-5408
 MV Cust Svc II
 R12
 Anchorage CL

12-5367
 MV Cust Svc I
 R10
 Anchorage CL

12-5368
 MV Cust Svc I
 R10
 Anchorage CL

12-5346
 MV Cust Svc I
 R10
 Anchorage CL

12-5365
 MV Cust Svc I
 R10
 Anchorage CL

12-5376
 MV Cust Svc I
 R10
 Anchorage CL

12-5405
 MV Cust Svc I
 R10
 Anchorage CL

12-5409
 MV Cust Svc II
 R12
 Anchorage CL

12-5447
 MV Cust Svc II
 R12
 Anchorage CL

12-5384
 MV Cust Svc I
 R10
 Anchorage CL

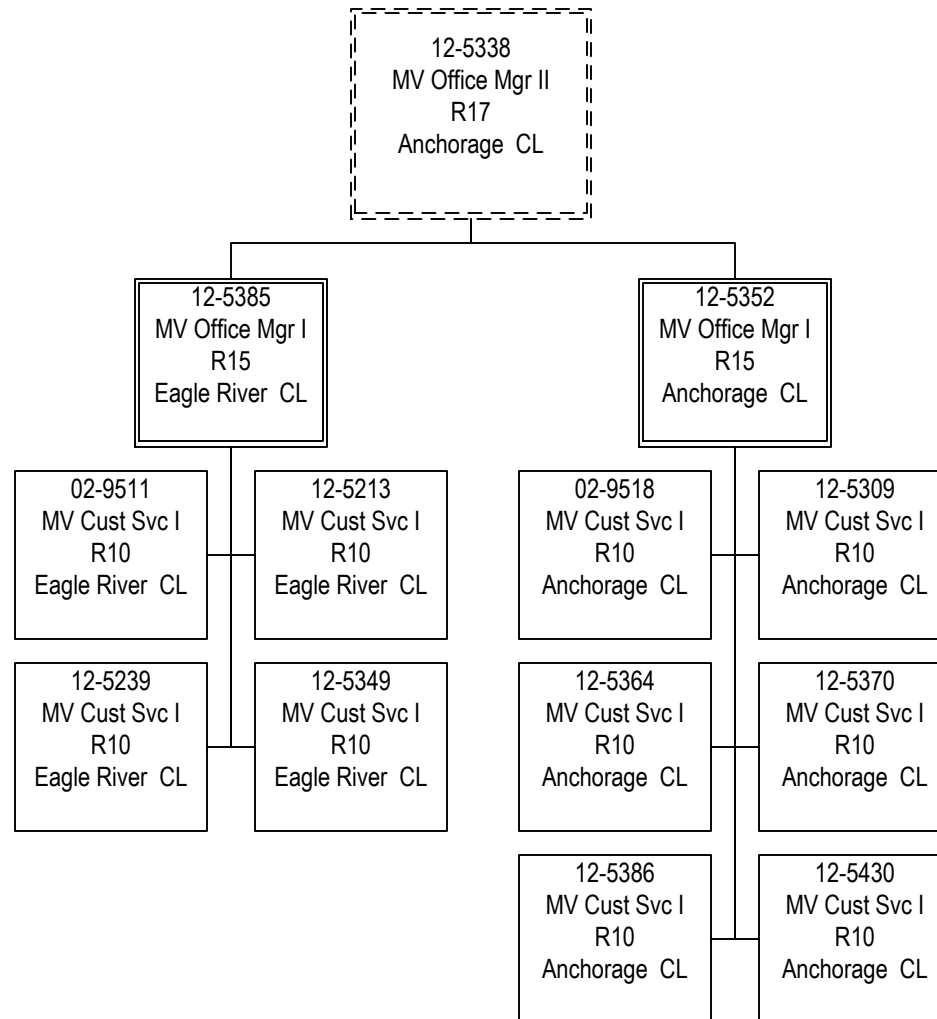
12-5442
 MV Cust Svc I
 R10
 Anchorage CL

12-5371
 MV Cust Svc I
 R10
 Anchorage CL

12-5373
 MV Cust Svc I
 R10
 Anchorage CL

12-5445
 MV Cust Svc I
 R10
 Anchorage CL

Department of Administration
Division of Motor Vehicle
Other Anchorage Offices



Department of Administration
 Division of Motor Vehicle
 Statewide Offices

12-5319
 MV Office Mgr II
 R17
 Fairbanks CL

12-5320
 MV Office Mgr I
 R15
 Fairbanks CL

12-5324
 MV Office Mgr I
 R15
 Fairbanks CL

12-5220
 MV Office Mgr I
 R15
 Juneau CL

12-5306
 MV Office Mgr I
 R15
 Soldotna CL

12-5383
 MV Office Mgr I
 R15
 Palmer CL

12-5335
 MV Cust Svc II
 R12
 Delta Junction CL

12-5323
 MV Cust Svc II
 R12
 Fairbanks CL

12-5446
 MV Cust Svc II
 R12
 Fairbanks CL

12-5321
 MV Cust Svc II
 R12
 Fairbanks CL

12-5236
 MV Cust Svc II
 R12
 Juneau CL

12-5120
 MV Cust Svc II
 R12
 Soldotna CL

12-5363
 MV Cust Svc II
 R12
 Palmer CL

12-5378
 MV Cust Svc II
 R12
 Palmer CL

02-9515
 MV Cust Svc I
 R10
 Fairbanks CL

02-9516
 MV Cust Svc I
 R10
 Fairbanks CL

12-5322
 MV Cust Svc II
 R12
 Fairbanks CL

12-5303
 MV Cust Svc II
 R12
 Juneau CL

12-5311
 MV Cust Svc II
 R12
 Soldotna CL

12-5433
 MV Cust Svc I
 R10
 Palmer CL

02-9509
 MV Cust Svc I
 R10
 Palmer CL

12-5326
 MV Cust Svc I
 R10
 Fairbanks CL

12-5333
 MV Cust Svc I
 R10
 Fairbanks CL

12-5216
 MV Cust Svc I
 R10
 Fairbanks CL

12-5217
 MV Cust Svc I
 R10
 Juneau CL

02-9508
 MV Cust Svc I
 R10
 Soldotna CL

02-9521
 MV Cust Svc I
 R10
 Palmer CL

12-5351
 MV Cust Svc I
 R10
 Palmer CL

12-5453
 MV Cust Svc I
 R10
 Fairbanks CL

12-5328
 MV Cust Svc I
 R10
 Fairbanks CL

12-5234
 MV Cust Svc I
 R10
 Juneau CL

12-5431
 MV Cust Svc I
 R10
 Soldotna CL

12-5362
 MV Cust Svc I
 R10
 Palmer CL

12-5466
 MV Cust Svc I
 R10
 Palmer CL

12-5329
 MV Cust Svc I
 R10
 Fairbanks CL

12-5336
 MV Cust Svc II
 R12
 Haines CL

12-5465
 MV Cust Svc I
 R10
 Soldotna CL

12-5313
 MV Cust Svc II
 R12
 Homer CL

12-5477
 MV Cust Svc I
 R10
 Homer CL

12-5332
 MV Cust Svc I
 R10
 Fairbanks CL

Department of Administration
Division of Motor Vehicle
Small Offices & Business Partners

