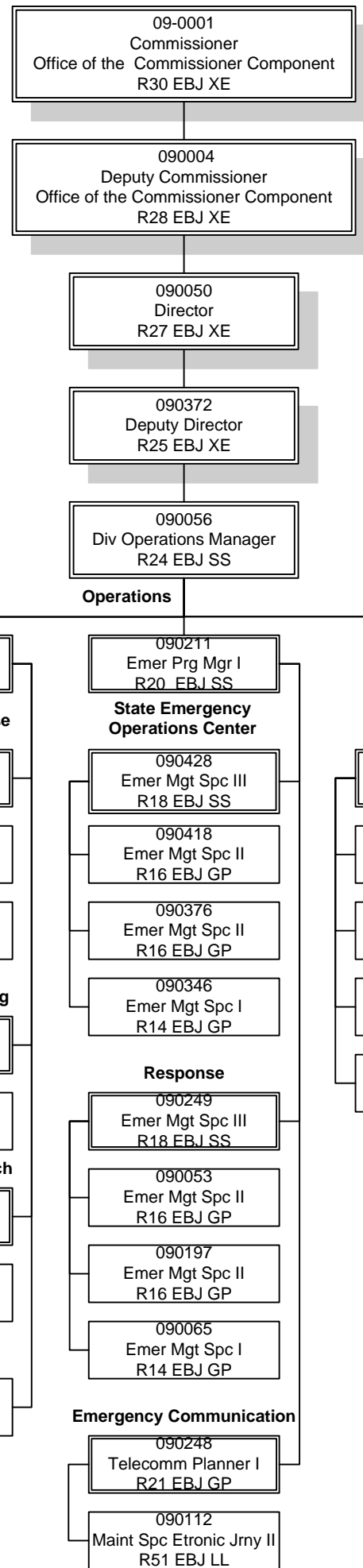
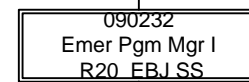


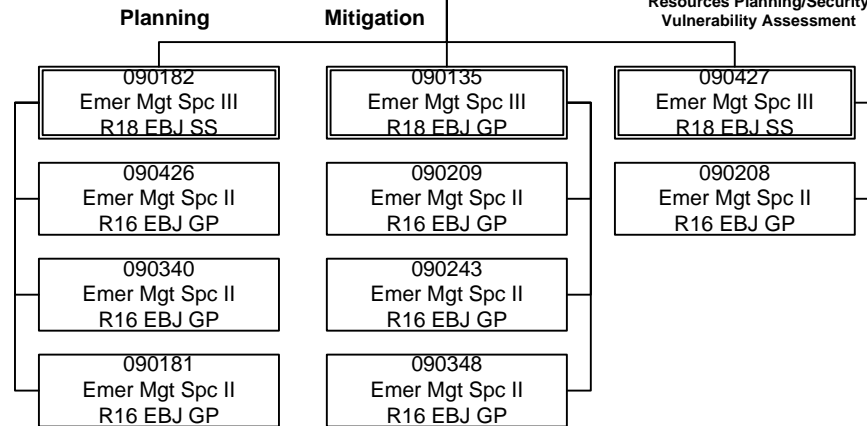
Department of Military and Veterans Affairs
 Division of Homeland Security and Emergency Management Component



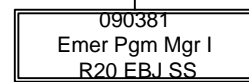
Planning



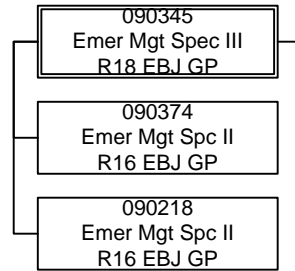
Critical Infrastructure/Key Resources Planning/Security Vulnerability Assessment



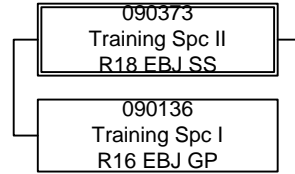
Preparedness



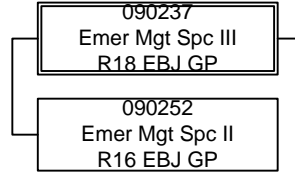
Preparedness Exercise



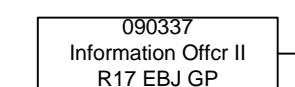
Preparedness Training



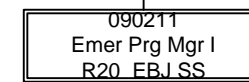
Preparedness Outreach



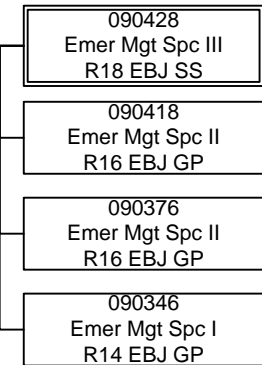
Public Information



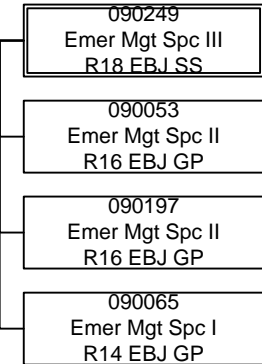
Operations



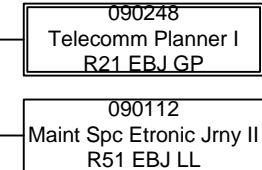
State Emergency Operations Center



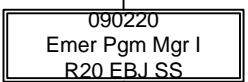
Response



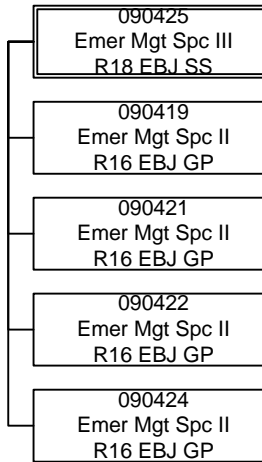
Emergency Communication



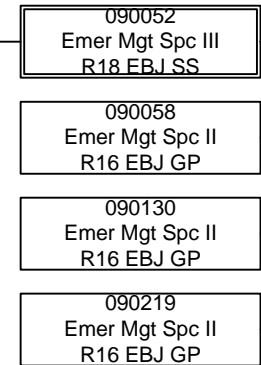
Disaster Assistance



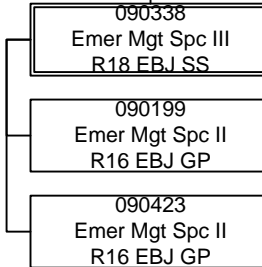
Public Assistance Team 1



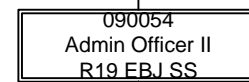
Public Assistance Team 2



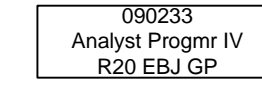
Individual Assistance



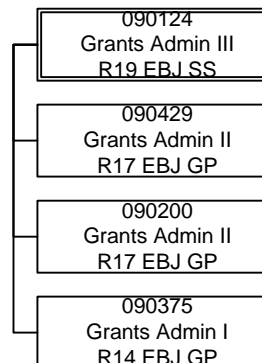
Program Support



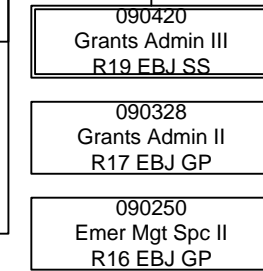
Programming



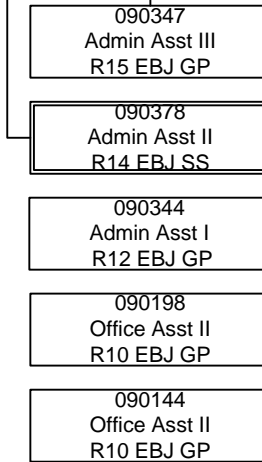
Disaster Grants Management/Audit



Non-Disaster Grants Management



Budget/Admin/Logistics



Location Codes
 EBJ-Joint Base Elmendorf-Richardson

Bargaining Unit Codes
 GG-General Gov't Employees
 GP-General Gov't Employees
 LL-Labor, Trades & Crafts
 SS-Supervisory Employees
 XE-Exempt Executive