

FY2014 GOVERNOR'S
HIGHWAYS & AVIATION
NORTHERN REGION HIGHWAYS & AVIATION (2068)
M&O ADMINISTRATION/ENGINEERING
CHART 1A

POSITIONS	
FULL TIME	282
SEASONAL	53
NON PERM	22
TOTAL	357

FAIRBANKS
JBA

DIVISION DIRECTOR
25-2116 [XE] 27

ENGINEER/ARCH III
25-2119 [SS] 25

SAFETY OFFICER
25-2098 [GP] 18

REGIONAL M&O
MANAGER
25-1914 [SS] 23
(SEE CHART 1B-1F)

DALTON DISTRICT
(SEE CHART 2)

RURAL AVIATION
(SEE CHART 3)

WESTERN DISTRICT
(SEE CHART 4)

ENGINEER/ARCH I/II
25-0163 [SS] 22/23

ENV PROGRAM SPEC III
25-1574 [GP] 18

ENV IMPACT ANALYST III
25-1734 [SS] 19

ADMIN OFFICER II
25-2122 [SS] 19

ENGINEER ASSOCIATE
25-1476 [GP] 21

ENV IMPACT ANALYST II
25-3715 [GP] 17

ACCT TECH III
25-1241 [GP] 16

ENGINEER ASST II
25-1788 [GG] 19

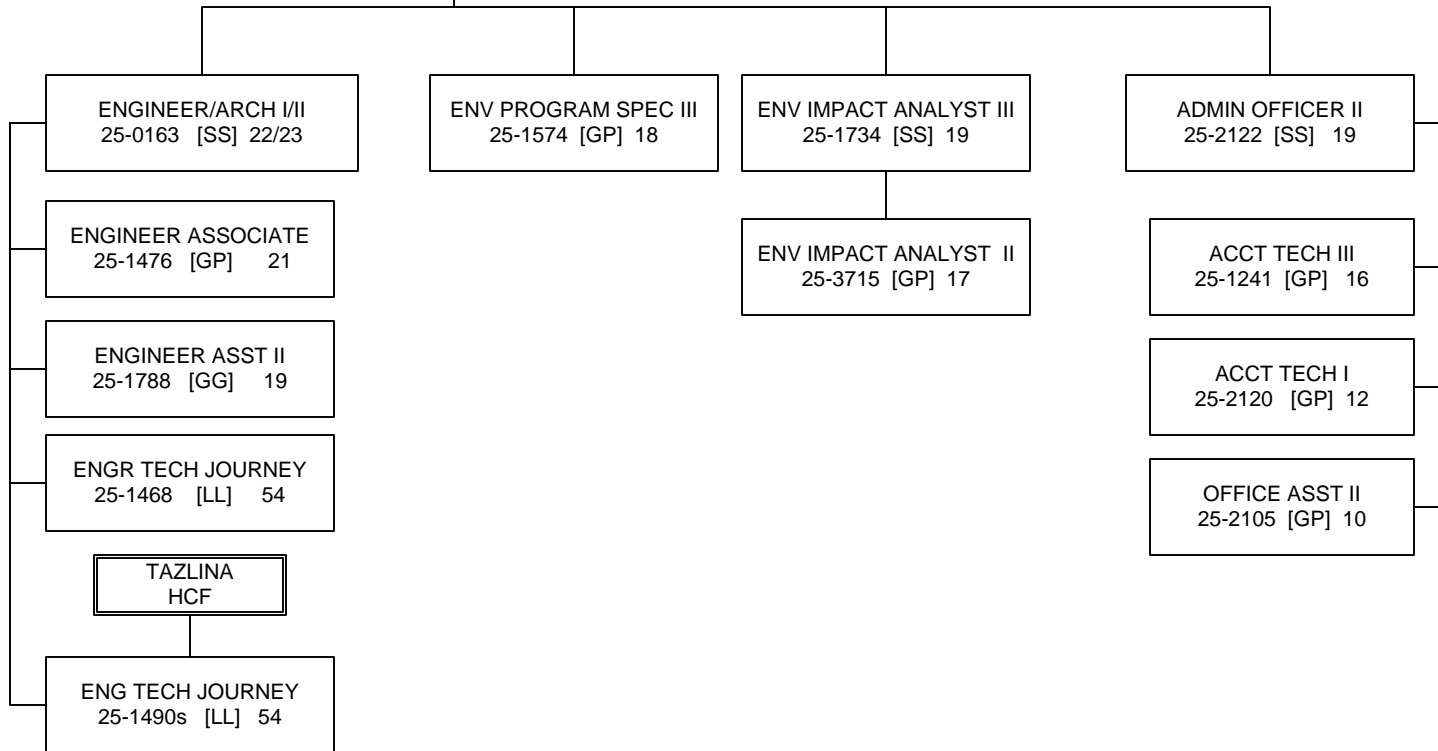
ENGR TECH JOURNEY
25-1468 [LL] 54

TAZLINA
HCF

ENG TECH JOURNEY
25-1490s [LL] 54

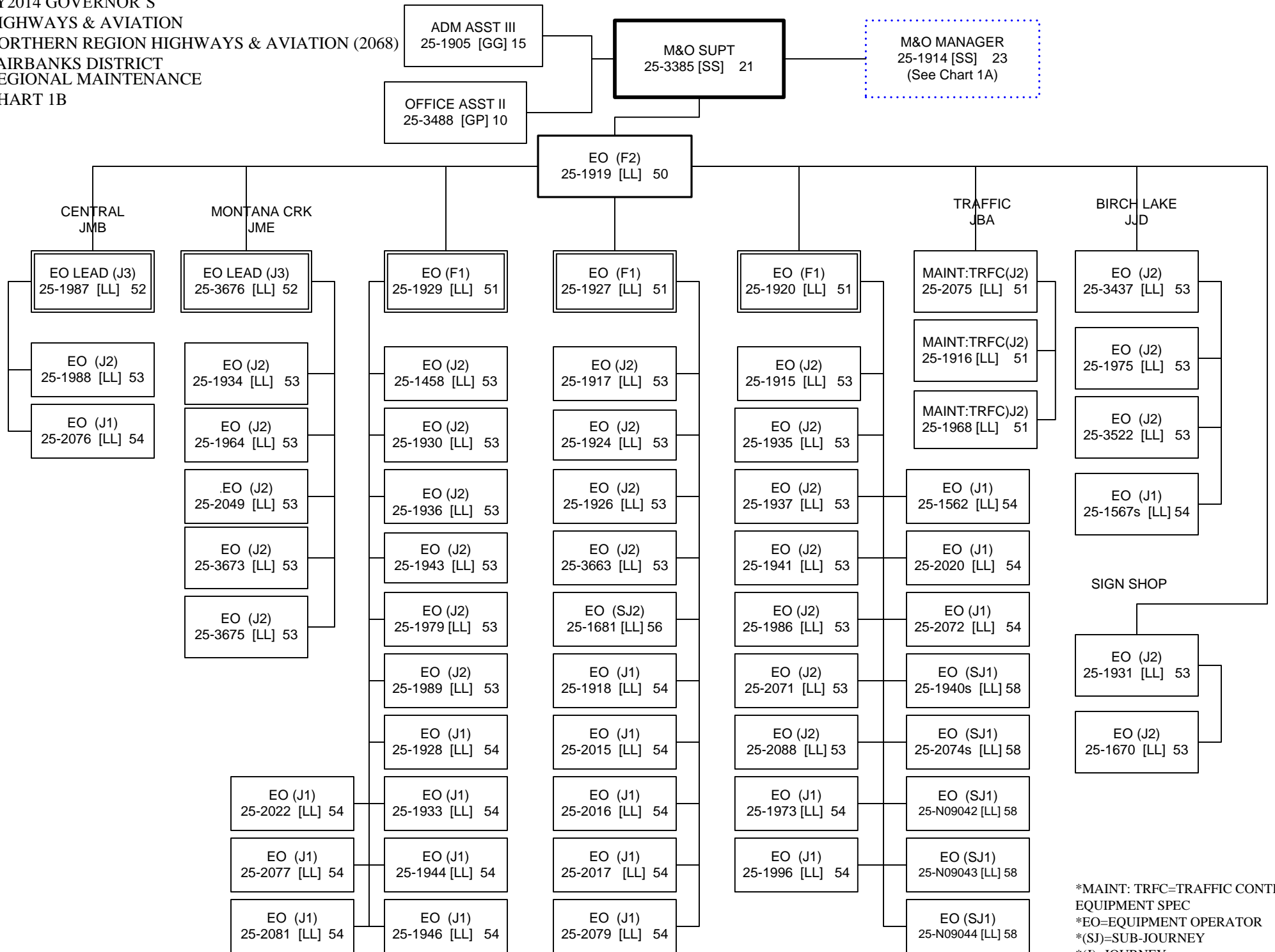
ACCT TECH I
25-2120 [GP] 12

OFFICE ASST II
25-2105 [GP] 10



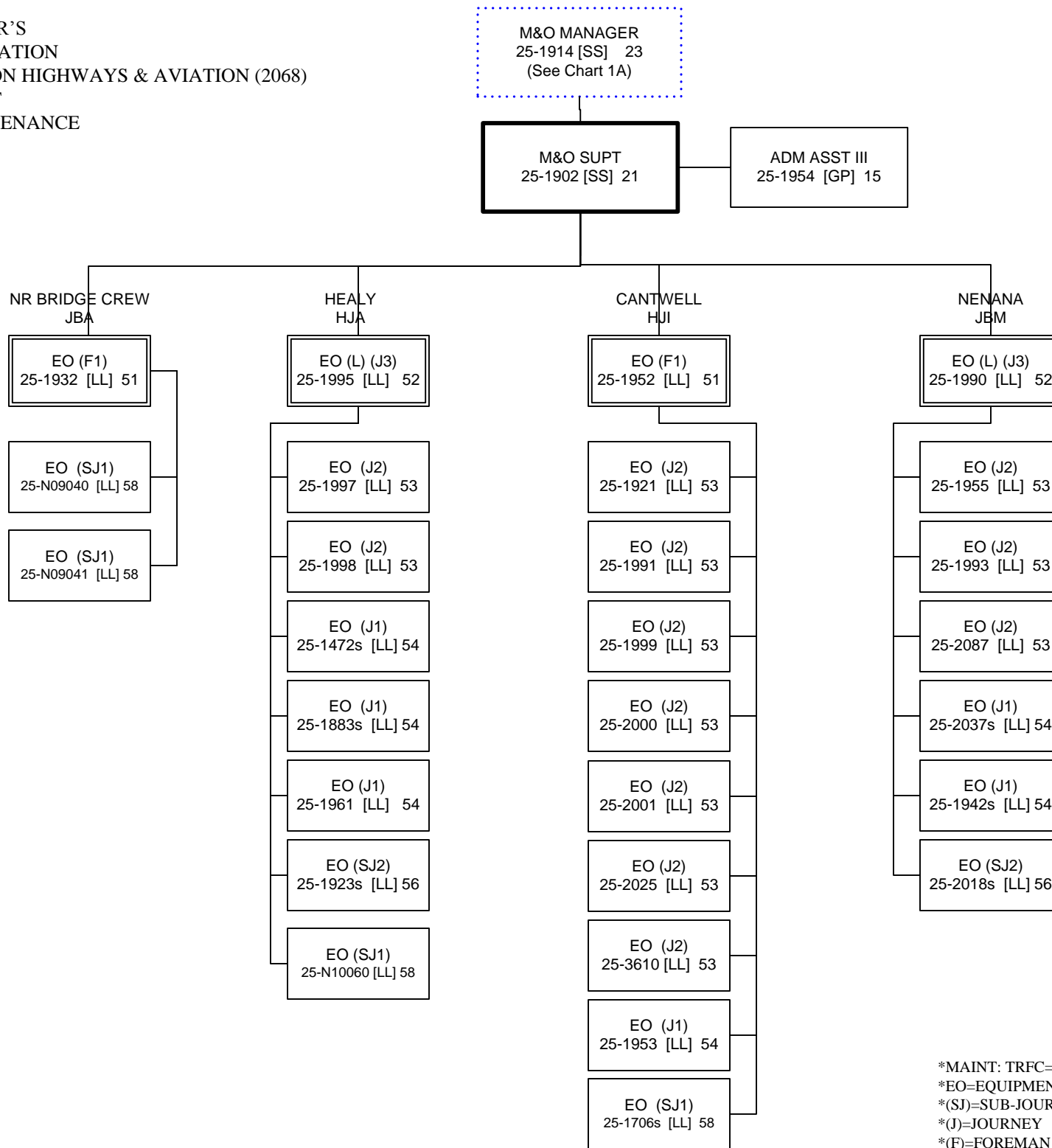
FAIRBANKS (JBA)

FY2014 GOVERNOR'S
HIGHWAYS & AVIATION
NORTHERN REGION HIGHWAYS & AVIATION (2068)
FAIRBANKS DISTRICT
REGIONAL MAINTENANCE
CHART 1B



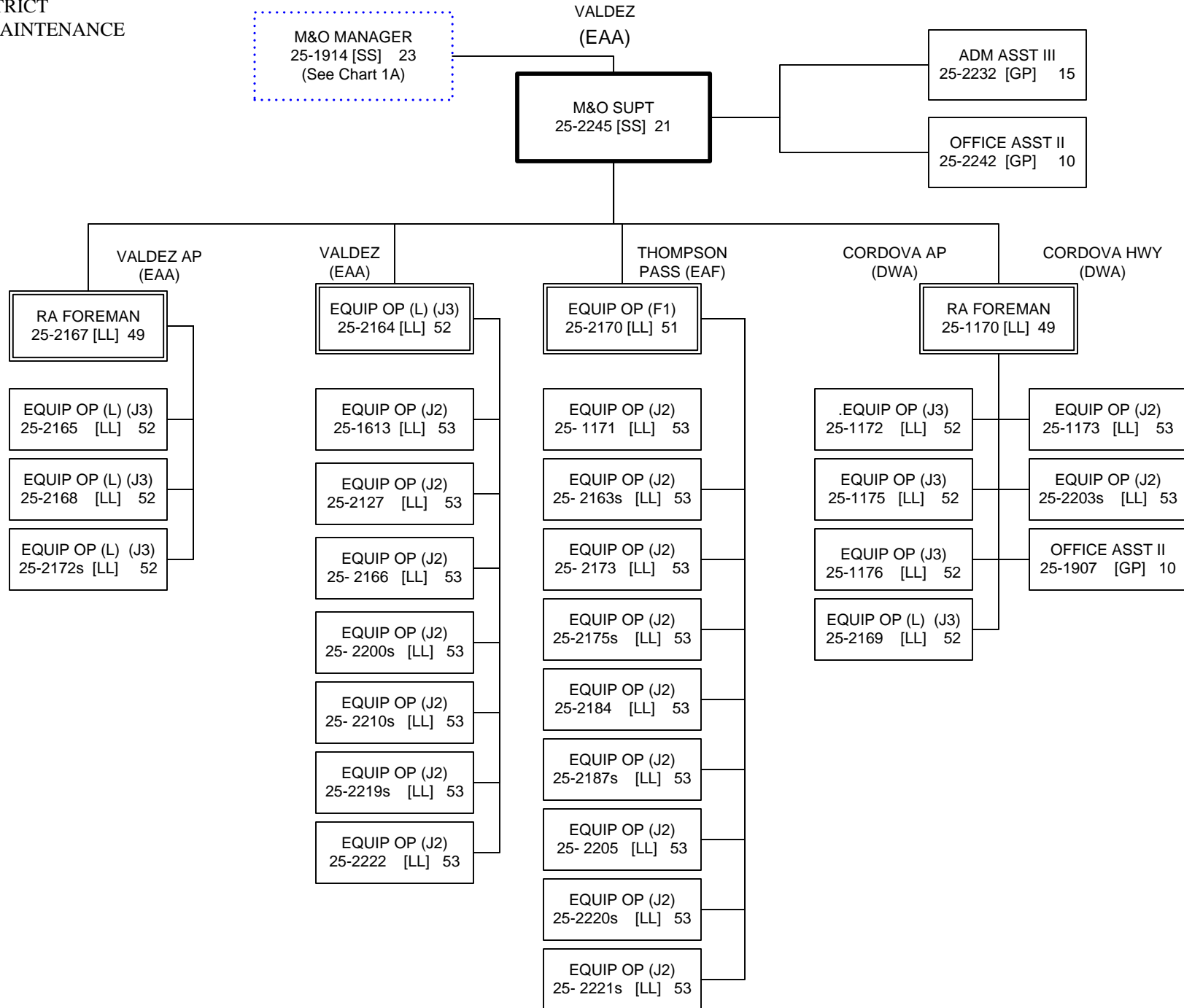
*MAINT: TRFC=TRAFFIC CONTROL
EQUIPMENT SPEC
*EO=EQUIPMENT OPERATOR
*(SJ)=SUB-JOURNEY
*(J)=JOURNEY
*(F)=FOREMAN

FY2014 GOVERNOR'S
HIGHWAYS & AVIATION
NORTHERN REGION HIGHWAYS & AVIATION (2068)
DENALI DISTRICT
REGIONAL MAINTENANCE
CHART 1C

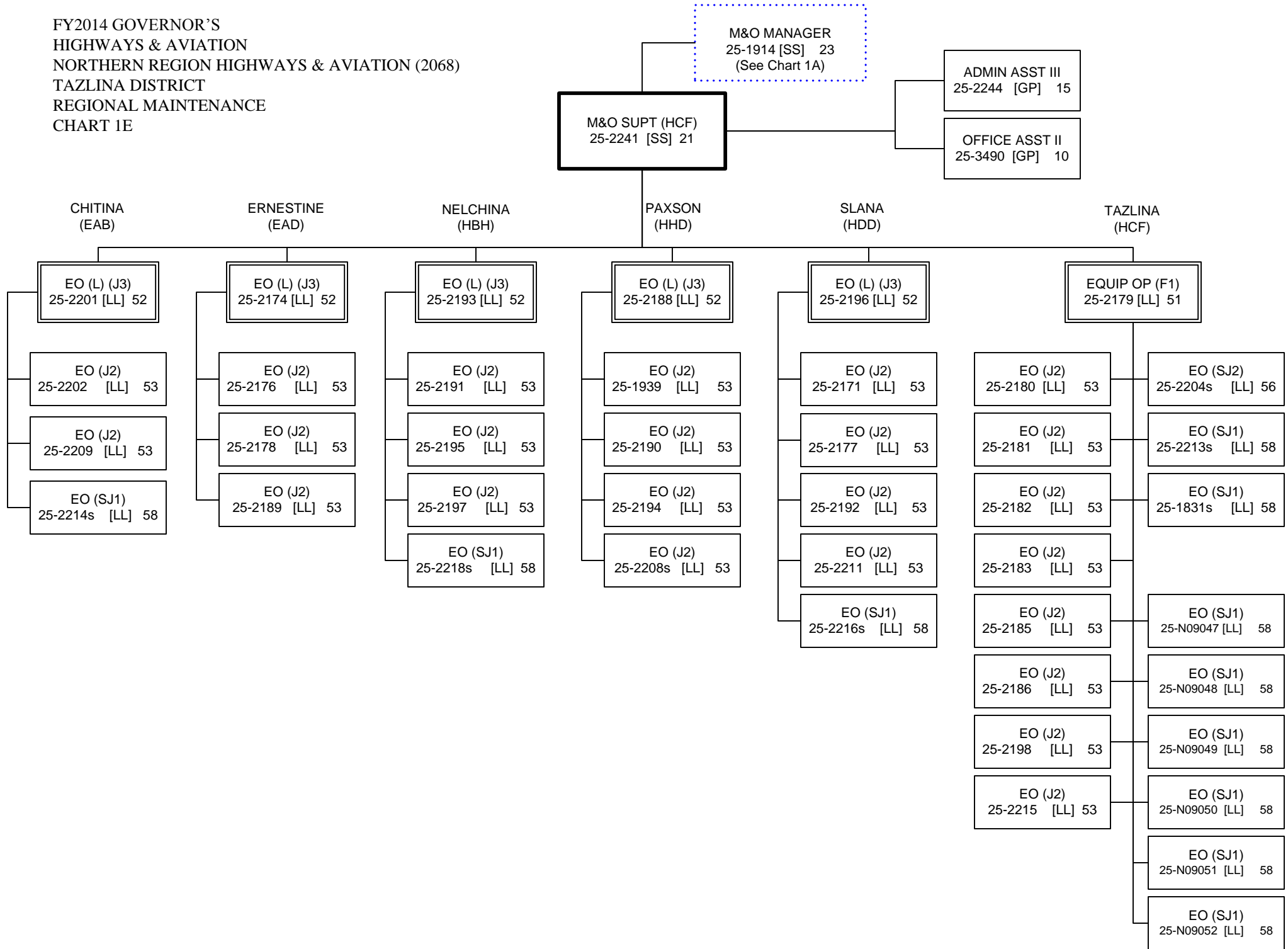


*MAINT: TRFC=TRAFFIC CONTROL EQUIPMENT SPEC
*EO=EQUIPMENT OPERATOR
*(SJ)=SUB-JOURNEY
*(J)=JOURNEY
*(F)=FOREMAN

FY2014 GOVERNOR'S
HIGHWAYS & AVIATION
NORTHERN REGION HIGHWAYS & AVIATION (2068)
VALDEZ DISTRICT
REGIONAL MAINTENANCE
CHART 1D



FY2014 GOVERNOR'S
HIGHWAYS & AVIATION
NORTHERN REGION HIGHWAYS & AVIATION (2068)
TAZLINA DISTRICT
REGIONAL MAINTENANCE
CHART 1E



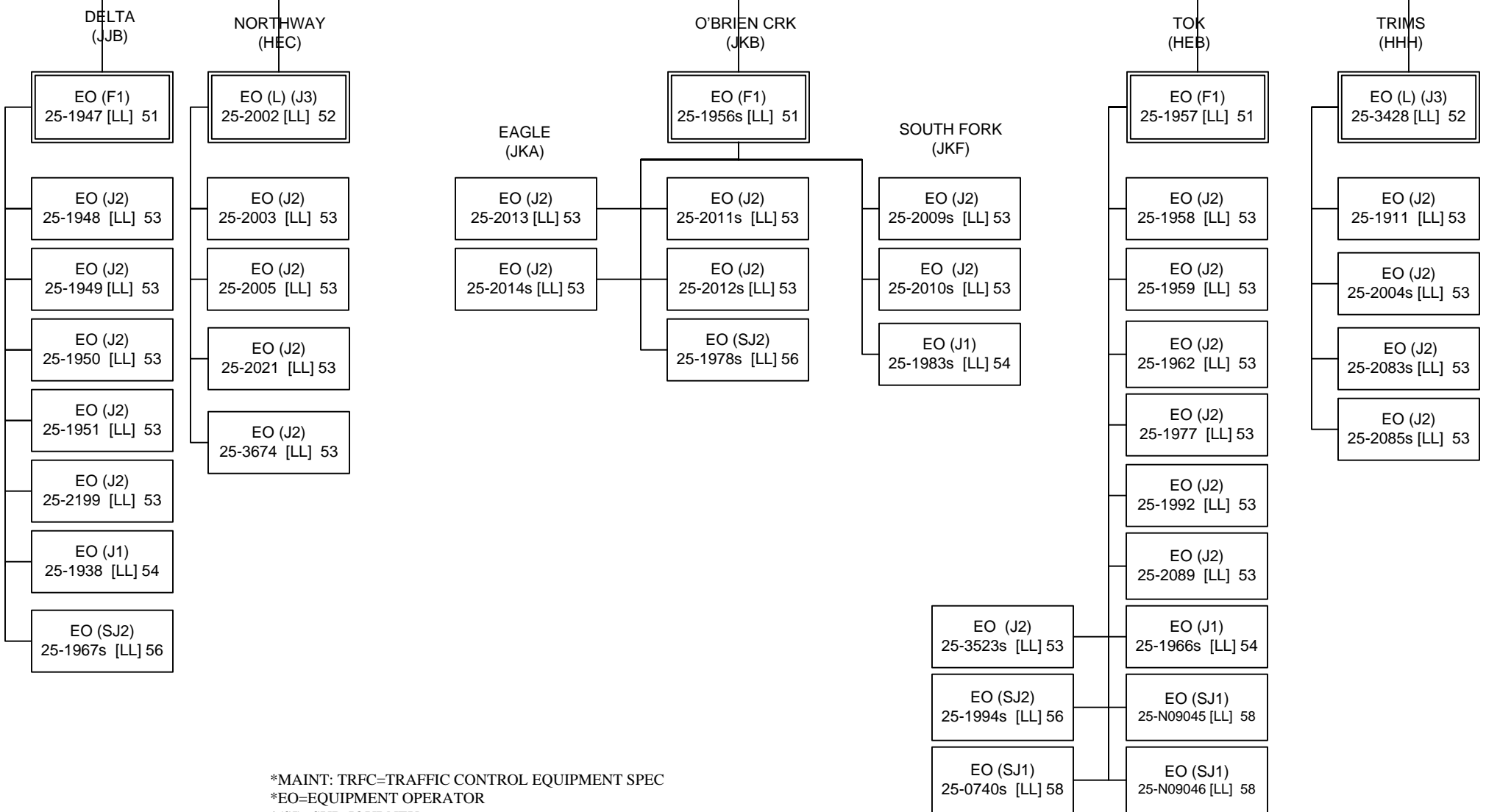
FY2014 GOVERNOR'S
HIGHWAYS & AVIATION
NORTHERN REGION HIGHWAYS & AVIATION (2068)
TOK DISTRICT
REGIONAL MAINTENANCE
CHART 1F

M&O MANAGER
25-1914 [SS] 23
(See Chart 1A)

TOK (HEB)
M&O SUPT
25-1901 [SS] 21

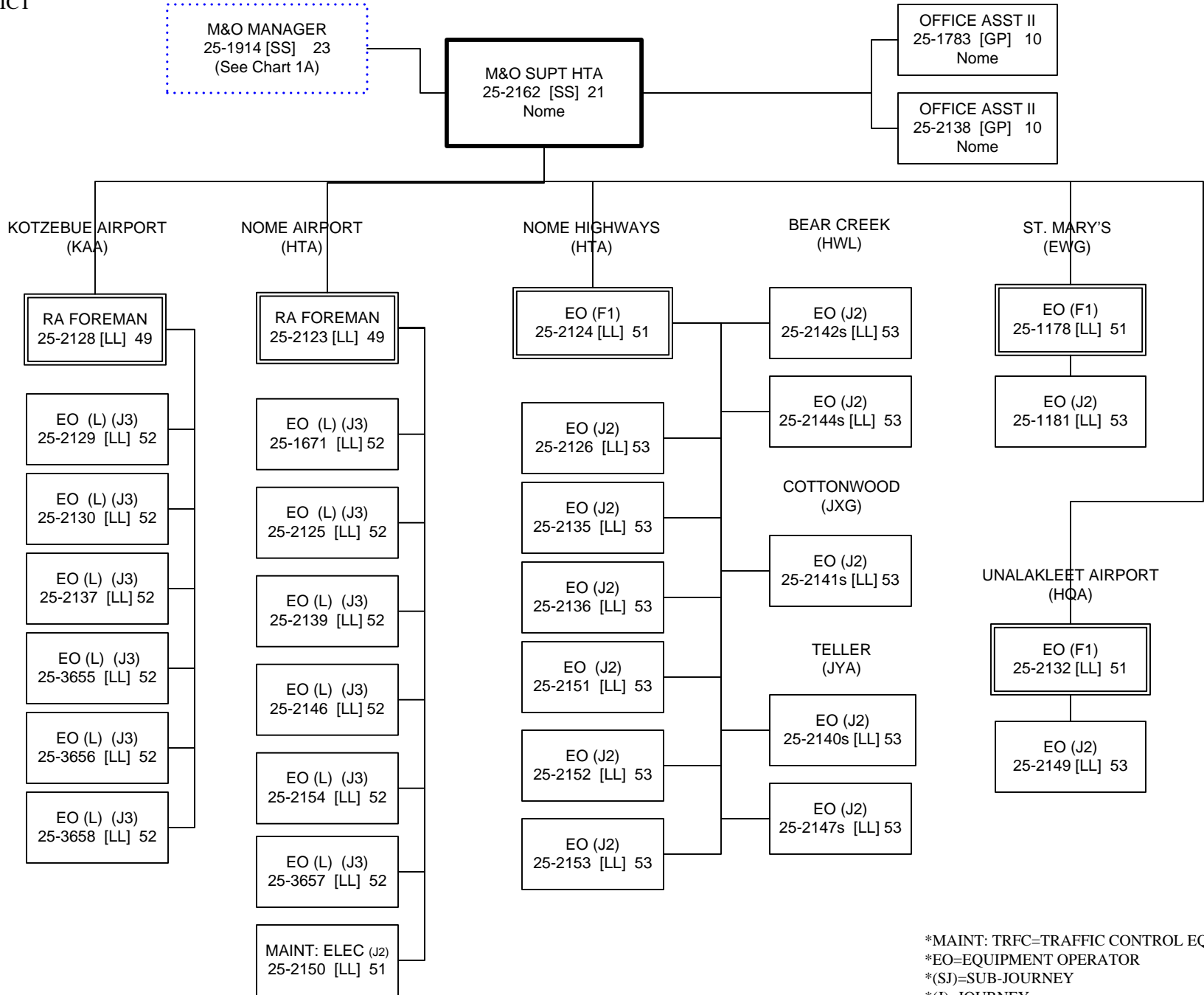
ADM ASST III
25-1904 [GP] 15

OFFICE ASST II
25-3489s [GP] 10



*MAINT: TRFC=TRAFFIC CONTROL EQUIPMENT SPEC
*EO=EQUIPMENT OPERATOR
*(SJ)=SUB-JOURNEY
*(J)=JOURNEY
*(F)=FOREMAN

FY2014 GOVERNOR'S
HIGHWAYS & AVIATION
NORTHERN REGION HIGHWAYS & AVIATION (2068)
WESTERN DISTRICT
CHART 4



*MAINT: TRFC=TRAFFIC CONTROL EQUIPMENT SPEC
*EO=EQUIPMENT OPERATOR
*(SJ)=SUB-JOURNEY
*(J)=JOURNEY
*(F)=FOREMAN

FAIRBANKS (JBA)

FY2014 GOVERNOR'S
HIGHWAYS & AVIATION
NORTHERN REGION HIGHWAYS & AVIATION (2068)
DALTON DISTRICT
CHART 2

M&O SUPT
25-1903 [SS] 21

(JCN)

(JCN)

(JBA)

(JBA)

EO (F1)
25-2041 [LL] 51

EO (F1)
25-3661 [LL] 51

ADM ASST III
25-2073 [GP] 15

OFFICE ASST II
25-2117 [GP] 10

BARROW
(MEA)

DEADHORSE
(MBC)

COLDFOOT
(KRB)

CHANDALAR
(LEA)

FBKS/DALTON
(JCN)

JIM RIVER
(KEE)

SAG RIVER
(LED)

LIVENGOOD
JQA

RA FOREMAN
25-3665 [LL] 49

RA FOREMAN
25-2023 [LL] 49

EO (L) (J3)
25-2034 [LL] 52

EO (L) (J3)
25-2028 [LL] 52

EO (J2)
25-2026 [LL] 53

EO (L) (J3)
25-2032 [LL] 52

EO (L) (J3)
25-2029 [LL] 52

EO (L) (J3)
25-1980 [LL] 52

EO (F1)
25-3660 [LL] 51

MAINT:ELECT (L)
(J2)
25-2056 [LL] 51

EO (J2)
25-2042 [LL] 53

EO (J2)
25-2036s [LL] 53

EO (J2)
25-2038 [LL] 53

EO (J2)
25-2053 [LL] 53

EO (L) (J3)
25-2033 [LL] 52

EO (J2)
25-1960 [LL] 53

EO (L) (J3)
25-2006 [LL] 52

EO (L) (J3)
25-1965 [LL] 52

EO (J2)
25-2086s [LL] 53

EO (SJ2)
25-2050 [LL] 56

EO (J2)
25-2045 [LL] 53

EO (J2)
25-2054 [LL] 53

EO (J2)
25-2035 [LL] 53

EO (J2)
25-1981 [LL] 53

EO (L) (J3)
25-2044 [LL] 52

EO (L) (J3)
25-2043 [LL] 52

EO (J2)
25-3668 [LL] 53

EO (J2)
25-2051 [LL] 53

EO (J2)
25-3662s [LL] 53

EO (J2)
25-2066 [LL] 53

EO (J2)
25-2040 [LL] 53

EO (J2)
25-1984 [LL] 53

EO (J3) (L)
25-3356 [LL] 52

EO (L) (J3)
25-2046 [LL] 52

SEVEN MILE
(JQG)

EO (J2)
25-2052 [LL] 53

EO (J2)
25-3672 [LL] 53

EO (J1)*
25-2206 [LL] 54

EO (J2)
25-2057 [LL] 53

EO (J2)
25-1985 [LL] 53

(SJ2-J1)* These are
flex positions 54/56

EO (L) (J3)
25-2047 [LL] 52

EO (L) (J3)
25-2030 [LL] 52

EO (J2)
25-2062 [LL] 53

MAINT: GNRLST (SJ2)
25-2441 [LL] 56

EO (SJ2-J1)*
25-2055 [LL] 54/56

EO (J2)
25-2059 [LL] 56

EO (J2)
25-2008 [LL] 53

EO (L) (J3)
25-2048 [LL] 52

EO (J2)
25-2031 [LL] 53

EO (J2)
25-2070 [LL] 53

EO (SJ2)
25-N11066 [LL] 56

EO (J2)
25-2058 [LL] 53

EO (J2)
25-3666 [LL] 53

EO (J2)
25-2060 [LL] 53

EO (J3) (L)
25-2061 [LL] 52

EO (J2)
25-2065 [LL] 53

EO (SJ2-SJ1)
25-2080 (LL) 54/56

EO (SJ2)
25-N11067 [LL] 56

EO (SJ2)
25-2069 [LL] 56

MANLEY
JRC

EO (J2)
25-2060 [LL] 53

EO (J3)
25-2064 [LL] 52

EO (J2)
25-2091 [LL] 53

EO (J2)
25-2090 [LL] 53

EO (SJ2)
25-N11047 [LL] 56

EO (SJ2)
25-2069 [LL] 56

EO (L) (J3)
25-1982 [LL] 52

EO (J2)
25-3669 [LL] 53

EO (J3) (L)
25-2068 [LL] 52

EO (J2)
25-3659s [LL] 53

EO (J2)
25-3664 [LL] 53

EO (SJ2)
25-N11048 [LL] 56

EO (SJ2)
25-N11064 [LL] 56

EO (J2)
25-1969 [LL] 53

EO (J2)
25-2060 [LL] 53

EO (J3)
25-3670 [LL] 52

EO (SJ2-J1)
25-2019 (LL) 54/56

EO (J2)
25-3664 [LL] 53

EO (SJ2)
25-N11049 [LL] 56

EO (SJ2)
25-N11065 [LL] 56

EO (J2)
25-1971 [LL] 53

EO (J2)
25-2060 [LL] 53

EO (J3)
25-3671 [LL] 52

EO (SJ2-J1)
25-2019 (LL) 54/56

EO (J2)
25-3664 [LL] 53

EO (SJ2)
25-N11050 [LL] 56

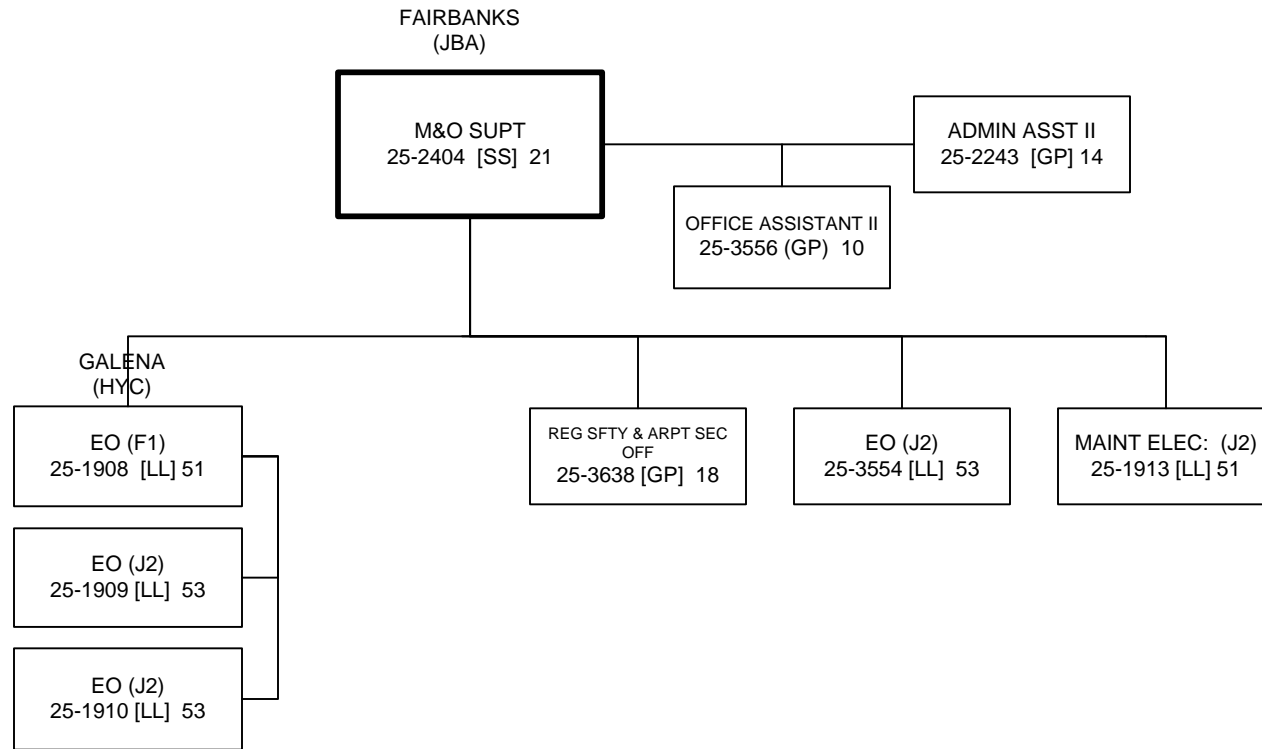
EO (SJ2)
25-N11065 [LL] 56

EO (J2)
25-1971 [LL] 53

EO (J2)
25-2060 [LL] 53

*MAINT: TRFC=TRAFFIC
CONTROL EQUIP SPEC
*EO=EQUIPMENT
OPERATOR
*(SJ)=SUB-JOURNEY
*(J)=JOURNEY
*(F)=FOREMAN

FY2014 GOVERNOR'S
HIGHWAYS & AVIATION
NORTHERN REGION HIGHWAYS & AVIATION (2068)
RURAL AVIATION
CHART 3



*EO=EQUIPMENT OPERATOR
*(J)=JOURNEY
*(F)=FOREMAN