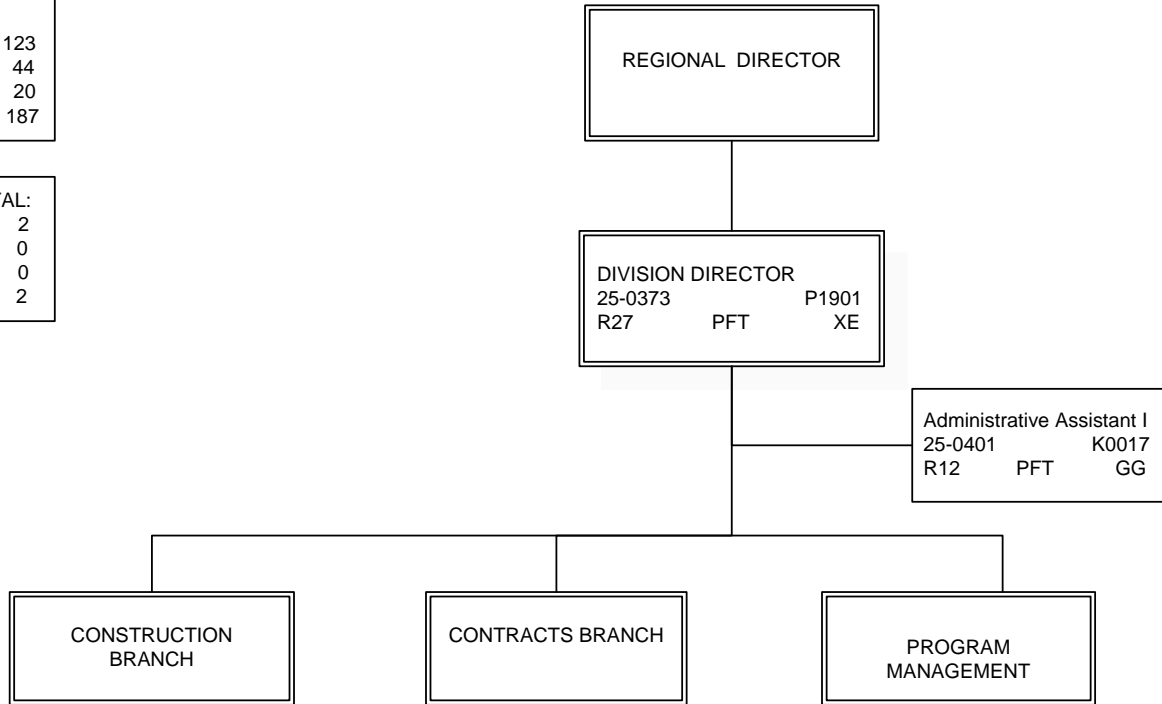


FY2014 GOVERNOR'S OPERATING BUDGET
 RDU: DESIGN AND CONSTRUCTION
 COMPONENT: CENTRAL REGION CONSTRUCTION AND CIP
 SUPPORT (2293)

COMPONENT TOTAL:	
FULLTIME POSITIONS:	123
PARTTIME POSITIONS:	44
NON PERM POSITIONS:	20
TOTAL	187

REGIONAL OFFICE TOTAL:	
FULLTIME POSITIONS:	2
PARTTIME POSITIONS:	0
NON PERM POSITIONS:	0
TOTAL	2



Note: All positions are located in Anchorage.

FY2014 GOVERNOR'S OPERATING BUDGET
 RDU: DESIGN AND CONSTRUCTION
 COMPONENT: CENTRAL REGION CONSTRUCTION AND CIP
 SUPPORT (2293)

CONSTRUCTION TOTAL:
 FULLTIME POSITIONS: 91
 PARTTIME POSITIONS: 44
 NON PERM POSITIONS: 20
 TOTAL 155

REGIONAL CONSTRUCTION
 ENGINEER
 Engineer/Architect V
 25-0408 PFT P8918
 R27 SS

Administrative Asst. III
 25-0494 K0053
 R15 PFT GG

Office Assistant II
 25-0444 P1135
 R10 PFT GG

Office Assistant II
 25-0461 P1135
 R10 PFT GG

Office Assistant I
 25-0786 P1134
 R8 S GG

QUALITY
 ASSURANCE

Engineer/Architect III
 25-0405 P8915
 R25 PFT SS

Civ Rights & Compl Spec II
 25-0505 K0083
 R17 PFT SS

CONSTRUCTION CHIEF
 Engineer/Architect IV
 25-0391 P8916
 R26 PFT SS

Engineer Assistant III
 25-0521 P8912
 R21 PFT GG

CONSTRUCTION CHIEF
 Engineer/Architect IV
 25-0669 P8916
 R26 PFT SS

CONCURRENT
 REVIEW

ROVING
 INSPECTORS

Engineering Associate
 25-0625 P8925
 R21 PFT GG

Engineer Assistant III
 25-0731 P8912
 R21 PFT GG

Engineer/Architect III
 25-0415 P8915
 R25 PFT SS

Engineer Assistant III
 25-3513 P8912
 R21 PFT GG

Accounting Tech II
 25-0411 P1211
 R14 PFT GG

Engineer/Architect III
 25-0192 P8915
 R25 PFT SS

Engineer Assistant III
 25-0581 P8912
 R21 PFT GG

Engineer Assistant II
 25-0684 P8911
 R19 PFT GG

Engineer/Architect III
 25-0440 P8915
 R25 PFT SS

Engineer/Architect II
 25-0678 P8914
 R23 PFT SS

Engineer Assistant III
 25-0681 P8912
 R21 PFT GG

Engineer/Architect III
 25-0502 P8915
 R25 PFT SS

Engineer Assistant II
 25-0909 P8911
 R19 PFT GG

Engineer Assistant II
 25-0735 P8911
 R19 PFT GG

Engineer/Architect II
 25-3400 P8914
 R23 PFT SS

Engineer/Architect II
 25-3500 P8914
 R23 PFT SS

Engineer/Architect II
 25-0795 P8914
 R23 PFT SS

Engineer Associate
 25-3550 P8925
 R21 PFT GG

Engineer Assistant II
 25-0737 P8911
 R19 PFT GG

Engineer Assistant II
 25-3506 P8911
 R19 PFT GG

ADDITIONAL STAFF ASSIGNED AS NEEDED FROM
 POSITION LISTING ON NEXT PAGE

Note: All positions are located in Anchorage.

FY2014 GOVERNOR'S OPERATING BUDGET
 RDU: DESIGN AND CONSTRUCTION
 COMPONENT: CENTRAL REGION CONSTRUCTION AND CIP
 SUPPORT (2293)

POSITIONS REPORT TO ENGINEER/
 ARCHITECT POSITIONS ON PREVIOUS PAGE

Engineering Associate R21 GG P8925	
25-0506	PFT
25-0509	PFT
25-0514	PFT
25-0518	PFT
25-0758	PFT
25-0796	PFT

Engineer-In-Training Engineering Asst I/II (FLEX) R17/19 GG P8910/P8911	
25-3403	II PFT
25-3404	II PFT

Engineering Assistant III R21 GG P8912			
25-0446	PFT	25-0674	PFT
25-0465	PFT	25-0688	PFT
25-0510	PFT	25-0694	PFT
25-0512	PFT	25-0759	PFT
25-0513	PFT	25-0799	PFT
25-0579	PFT	25-3399	PFT
25-0633	PFT	25-3514	PFT
25-0648	PFT	25-3515	PFT

Engineering Assistant I/II (FLEX) R17/19 GG P8910/P8911			
25-0403	PFT	25-0654	PFT
25-0516	PFT	25-0693	PFT
25-0517	PFT	25-0696	PFT
25-0519	PFT	25-0701	PFT
25-0520	PFT	25-0760	PFT
25-0522	PFT	25-0767	PFT
25-0523	PFT	25-0804	PFT
25-0524	PFT	25-0807	PFT
25-0525	PFT	25-0809	PFT
25-0526	PFT	25-0811	PFT
25-0527	PFT	25-0814	PFT
25-0528	PFT	25-0815	PFT
25-0532	PFT	25-0822	PFT
25-0533	PFT	25-3503	PFT
25-0534	PFT	25-3504	PFT
25-0535	PFT	25-3505	PFT
25-0536	PFT	25-3507	PFT
25-0641	PFT	25-3508	PFT
25-0642	PFT	25-3509	PFT

Engg Tech Journey WG54 LL P9571		
25-0539		S
25-0540		S
25-0542		S
25-0552		S
25-0553	S Soldotna	
25-0554		S
25-0555		S
25-0559	S Wasilla	
25-0560		S
25-0563		S
25-0564		S
25-0828		S
25-0829	S Wasilla	
25-0832		S
25-0833		S

Eng Tech SJ III WG55 LL P9571		
25-0562		S
25-0570		S
25-0571		S
25-0572	S Wasilla	
25-0574		S
25-0577		S
25-0604		S
25-0606		S
25-0836		S
25-0896	S Dillingham	

Eng Tech SJ II WG57 LL P9571		
25-0547		S
25-0548		S
25-0586		S
25-0587		S
25-0591	S Wasilla	
25-0592		S
25-0593		S
25-0594	S Wasilla	
25-0595	S Wasilla	
25-0601		S
25-0868		S
25-0870		S
25-0875		S
25-0877	S Homer	
25-0907		S
25-0940		S
25-0956		S
25-0957	S Soldotna	

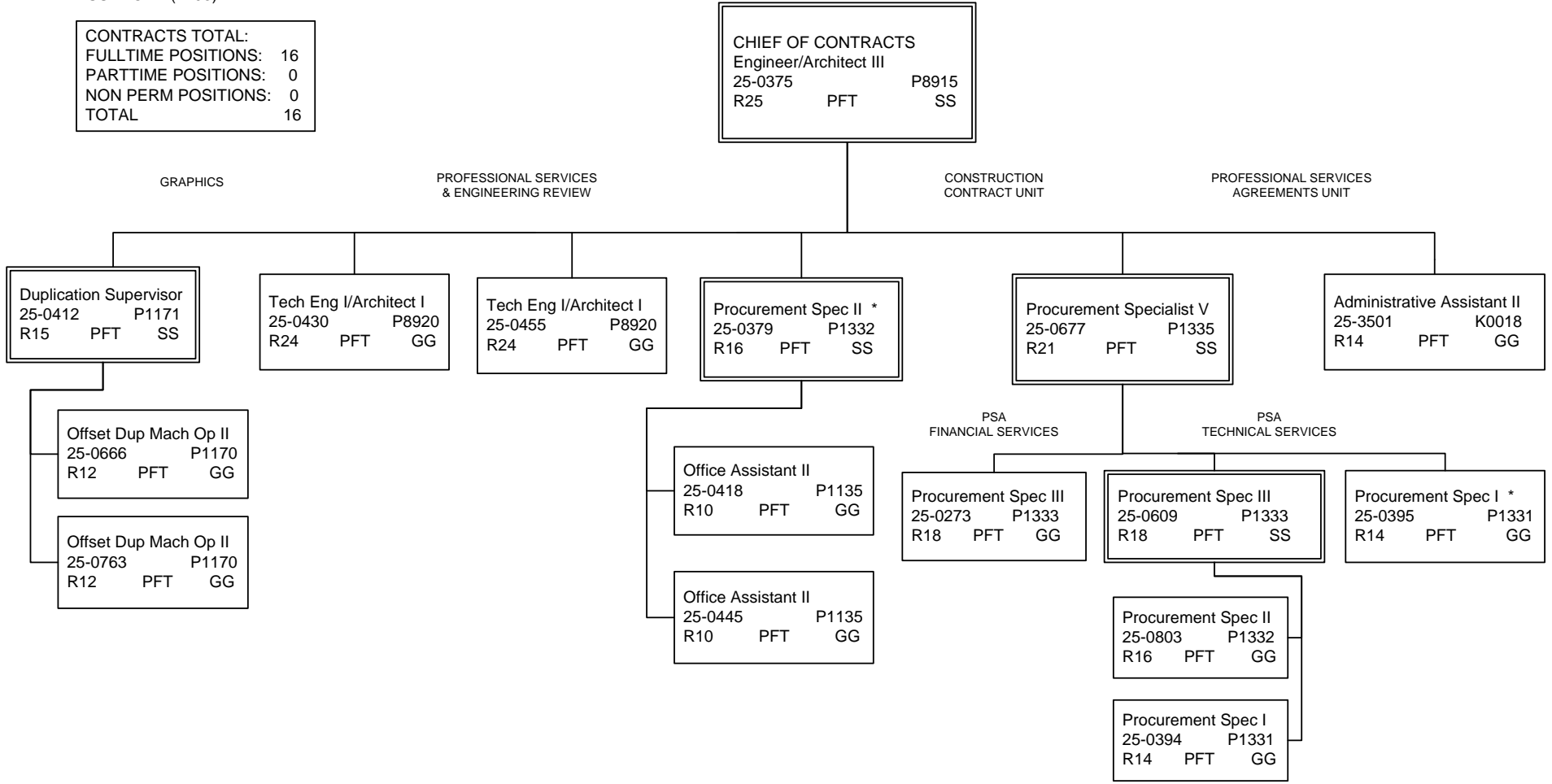
Non-Perm Interns Eng Tech SJ I/II WG57/59 LL P9571		
25IN0916		
25IN0917		
25IN0918		
25IN0919		
25IN0920		
25IN0921		
25IN0922		
25IN0923		
25IN0924		
25IN0925		

Non-Perm Positions WG59 LL P9571 Eng Tech SJ I		
25N09022	Wasilla	
25N09023	Kodiak	
25N09024	Wasilla	
25N09085		
25N09086		
25N09087	King Cove	
25N09088		
25N09089		
25N09090		
25N09091		

Note: All positions are located in Anchorage except where noted.

FY2014 GOVERNOR'S OPERATING BUDGET
 RDU: DESIGN AND CONSTRUCTION
 COMPONENT: CENTRAL REGION CONSTRUCTION AND CIP
 SUPPORT (2293)

CONTRACTS TOTAL:
 FULLTIME POSITIONS: 16
 PARTTIME POSITIONS: 0
 NON PERM POSITIONS: 0
 TOTAL 16

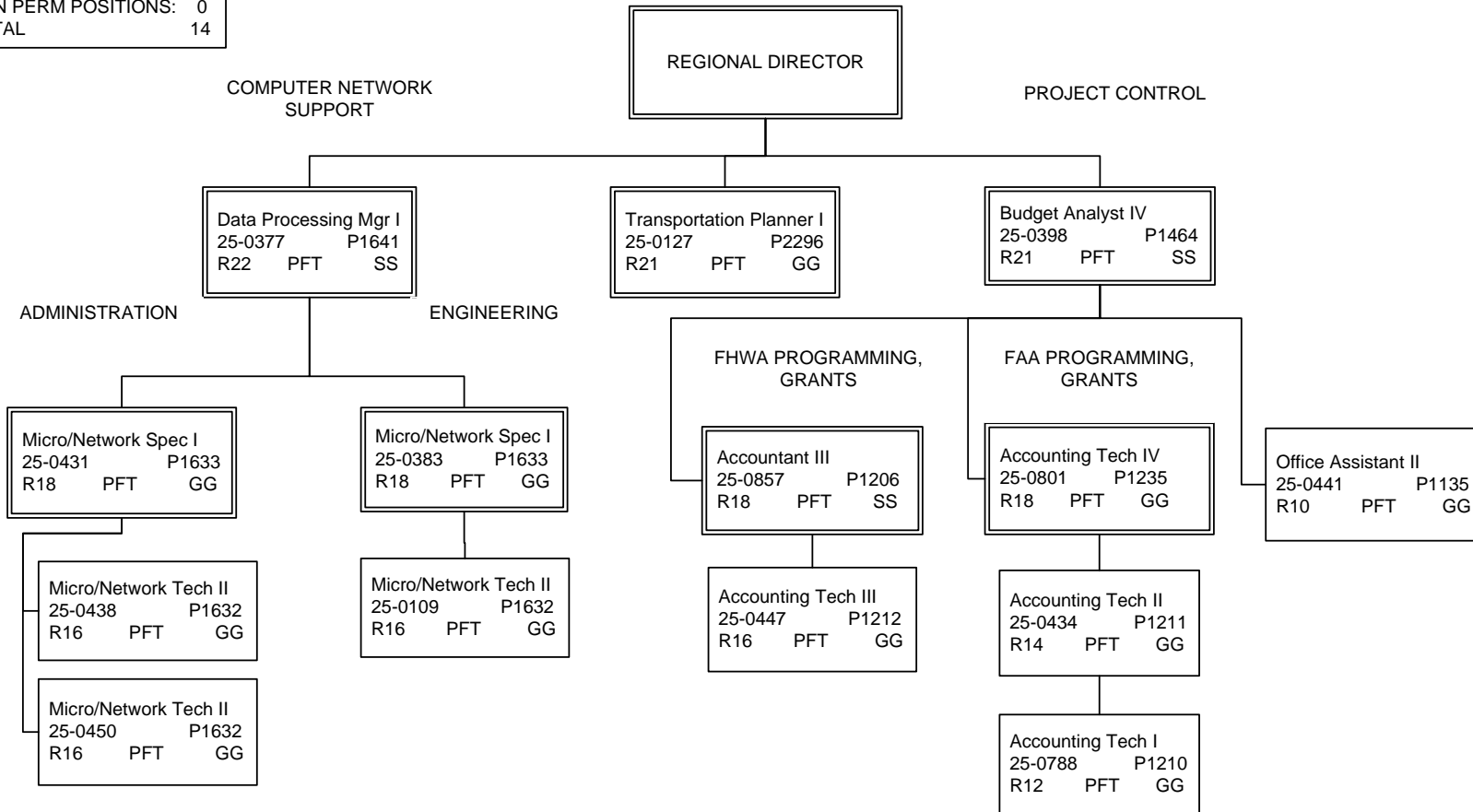


* Shared staff between PSA Unit and Construction Contract Unit

Note: All positions are located in Anchorage.

FY2014 GOVERNOR'S OPERATING BUDGET
 RDU: DESIGN AND CONSTRUCTION
 COMPONENT: CENTRAL REGION CONSTRUCTION AND CIP
 SUPPORT (2293)

PROGRAM MANAGEMENT:	
FULLTIME POSITIONS:	14
PARTTIME POSITIONS:	0
NON PERM POSITIONS:	0
TOTAL	14



Note: All positions are located in Anchorage.