

DEPARTMENT OF TRANSPORTATION AND PUBLIC FACILITIES  
 NORTHERN REGION CONSTRUCTION AND CIP SUPPORT  
 FY 2014 GOVERNOR'S REQUEST

NORTHERN REGION CONSTRUCTION & CIP SUPPORT	
Positions	Total
Full-Time	74
Seasonal	90
Non-Perm	13
<b>Total</b>	<b>177</b>

Fairbanks (JBA)

**REGIONAL DIRECTOR**  
 Asst. Commissioner  
 251239 (XE) 27

**CONSTRUCTION**  
 (see Chart 2 and 3)

**REGIONAL PROJECT CONTROL  
CHIEF**  
 Accountant IV  
 251752 (SS) 20

**REGIONAL IT MANAGER**  
 Data Processing Manager I  
 251376 (SS) 22

**OPERATING BUDGET**  
 Budget Analyst III  
 PFT  
 251248 (GG) 19

Accounting Tech III  
 251385 (GG) 16

Accounting Tech III  
 251403 (GG) 16

Analyst/Programmer IV  
 251675 (GG) 20

Micro/Network Spec I  
 251462 (GP) 18

Micro/Network Spec I  
 251561 (GP) 18

Micro/Network Spec II  
 251610 (GP) 20

College Intern III/IV  
 25IN0927 (EE) 10/12

**Budget Manager**  
 Admin Officer I  
 251367 (SS) 17

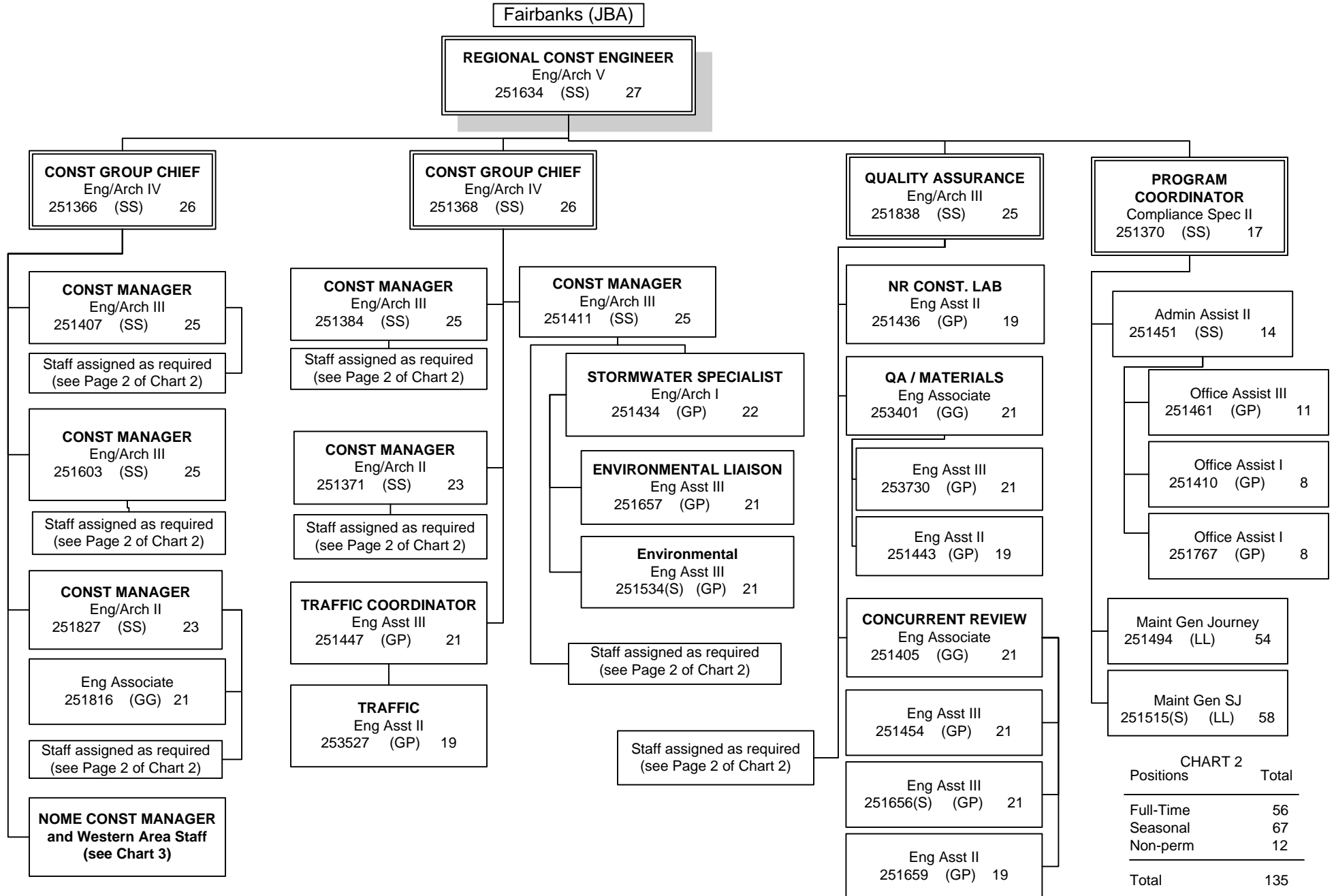
**Recruitment Coordinator**  
 Admin Asst III  
 251256 (GP) 15

Acct Clerk  
 251674 (GG) 10

Office Assistant II  
 251638 (GP) 10

CHART 1

Positions	Total
Full-Time	11
Seasonal	0
Non Perm	1
<b>Total</b>	<b>12</b>



**CHART 2**

Positions	Total
Full-Time	56
Seasonal	67
Non-perm	12
<b>Total</b>	<b>135</b>

Fairbanks (JBA)

STAFF ASSIGNED AS REQUIRED

Eng Associate (GP/GG) 21
251387
251431
251573
251578(S)
251609
251633
251705
251769
251782(S)**
251797
253402

Eng Asst III (GP) 21
251412
251639
251658
251765
251781
251784(S)
251796
251869(S)
253731
253732
251632(S) f

Eng Asst II (GP/GG) 19
251449
251455(S)
251459
251473(S)
251541(S)
251555
251548(S)
251557(S)
251579(S)
251580
251582(S)
251625(S)
251660(S)
251661(S)
251742(S)
251761(S)
253405
253521
253525
253528

Eng Asst I (GP/GG) 17
251637
EA I/II positions
251457
251818(S)
253526

Eng Technician (J) (LL) 54
251464(S)
251465(S)
251469(S)
251474(S)
251479(S)
251524(S)
251667(S)
251748(S)
251758(S)
251852(S)
251862(S)

Eng Technician (SJ3) (LL) 55
251480(S)
251484(S)
251485(S)
251486(S)
251492(S)
251615(S)
251678(S)
251762(S)
251854(S)
251857(S)
251875(S)++
251876(S)

Eng Technician (SJ2) (LL) 57
251502(S)
251505(S)
251507(S)
251508(S)
251511(S)
251518(S)
251519(S)
251525(S)
251566(S)
251569(S)
251596(S)
251684(S)
251688(S)
251689(S)
251691(S)***
251693(S)
251697(S)
251700(S)
251701(S)
251710(S)
251745(S)
251787(S)
251880(S)

Legend
J = Journey
SJ = SubJourney

\*\*Position assigned to Valdez (EAA)  
 \*\*\* Position resides in Deadhorse (MBC), but assigned to Fairbanks project managers  
 ++Positions assigned to Delta Junction

Fairbanks (JBA)

STAFF ASSIGNED AS REQUIRED

**NON PERMANENT  
 POSITIONS  
 Assigned as needed**

Eng Tech SJ I/II  
 25-NP077  
 25IN1005 (LL) 59/57

Eng Tech SJ I/II  
 25-NP082  
 25IN1010 (LL) 59/57

College Interns / Environmental  
 College Intern I/II/III/IV (EE) 8/9/10/12  
 25IN1114  
 College Intern II (EE) 09  
 25IN1115

Eng Tech SJ I/II  
 25-NP078  
 25IN1006 (LL) 59/57

Eng Tech SJ I/II  
 25-NP083  
 25IN1011 (LL) 59/57

Eng Tech SJ I/II  
 25-NP079  
 25IN1007 (LL) 59/57

Eng Tech SJ I/II  
 25-NP084  
 25IN1012 (LL) 59/57

Eng Tech SJ I/II  
 25-NP080  
 25IN1008 (LL) 59/57

Eng Tech SJ I/II  
 25-NP085  
 25IN1013 (LL) 59/57

Eng Tech SJ I/II  
 25-NP081  
 25IN1009 (LL) 59/57

Eng Tech SJ I/II  
 25-NP086  
 25IN1014 (LL) 59/57

Legend  
 J = Journey  
 SJ = SubJourney

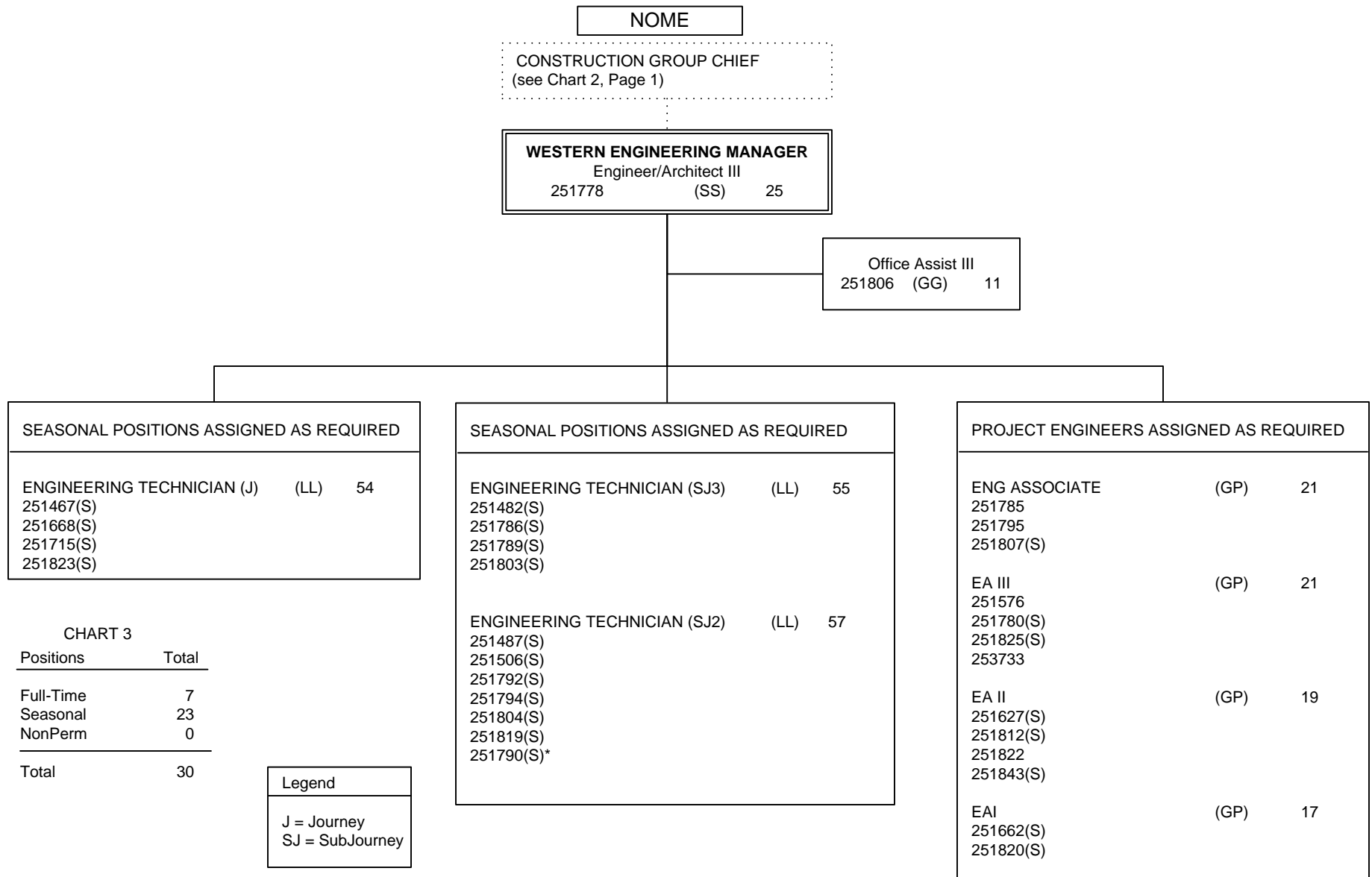


CHART 3

Positions	Total
Full-Time	7
Seasonal	23
NonPerm	0
<b>Total</b>	<b>30</b>

Legend
J = Journey
SJ = SubJourney

\* Kotzebue Duty Station (KAA)