

FY2014 GOVERNOR'S OPERATING BUDGET

RDU: DESIGN AND CONSTRUCTION

COMPONENT: CENTRAL DESIGN AND ENGINEERING SERVICES (2298)

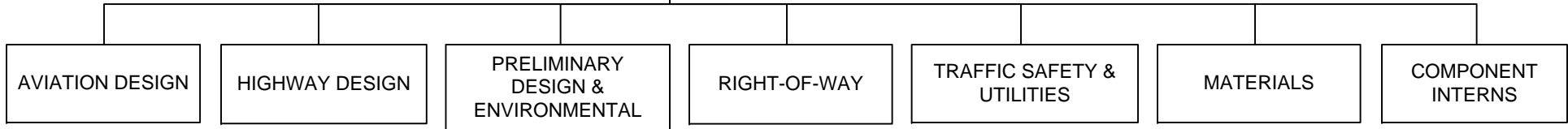
|                      |     |
|----------------------|-----|
| COMPONENT TOTAL:     |     |
| FULL-TIME POSITIONS: | 172 |
| PART-TIME POSITIONS: | 20  |
| NON-PERM POSITIONS:  | 22  |
| GRAND TOTAL:         | 214 |

|                        |   |
|------------------------|---|
| REGIONAL OFFICE TOTAL: |   |
| FULL-TIME POSITIONS:   | 3 |
| PART-TIME POSITIONS:   | 0 |
| TOTAL:                 | 3 |

|                                   |     |       |    |  |
|-----------------------------------|-----|-------|----|--|
| REGIONAL PRECONSTRUCTION ENGINEER |     |       |    |  |
| Engineer/Architect V              |     |       |    |  |
| 25-0382                           |     | P8919 |    |  |
| R27                               | PFT |       | SS |  |

|                              |     |  |    |  |
|------------------------------|-----|--|----|--|
| Administrative Assistant III |     |  |    |  |
| 25-0175 K0053                |     |  |    |  |
| R15                          | PFT |  | GG |  |

|                     |     |  |    |  |
|---------------------|-----|--|----|--|
| Office Assistant II |     |  |    |  |
| 25-0933 P1135       |     |  |    |  |
| R10                 | PFT |  | GG |  |

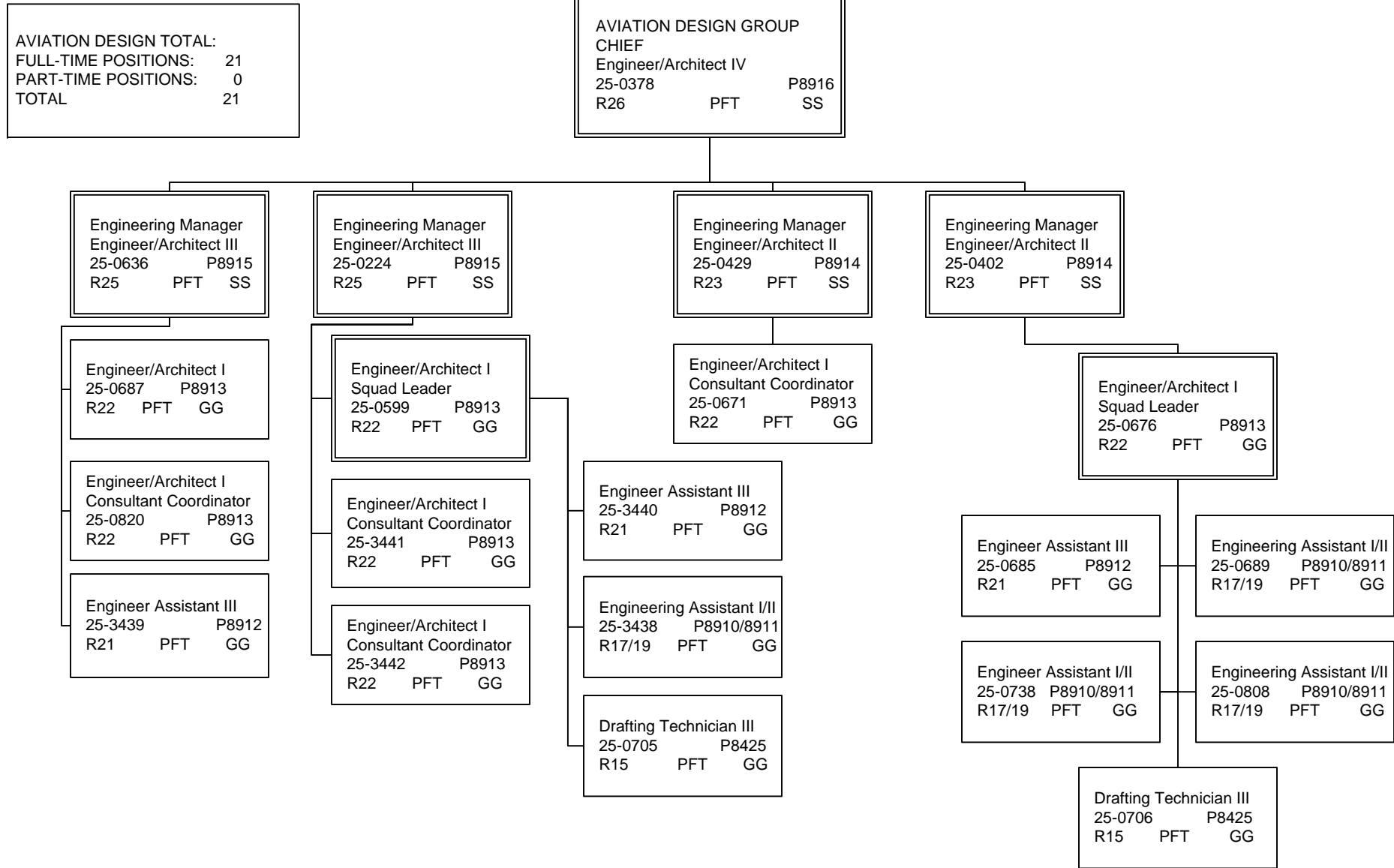


Note: All positions are located in Anchorage.

FY2014 GOVERNOR'S OPERATING BUDGET

RDU: DESIGN AND CONSTRUCTION

COMPONENT: CENTRAL DESIGN AND ENGINEERING SERVICES (2298)



AVIATION DESIGN TOTAL:  
 FULL-TIME POSITIONS: 21  
 PART-TIME POSITIONS: 0  
 TOTAL 21

AVIATION DESIGN GROUP  
 CHIEF  
 Engineer/Architect IV  
 25-0378 P8916  
 R26 PFT SS

Engineering Manager  
 Engineer/Architect III  
 25-0636 P8915  
 R25 PFT SS

Engineering Manager  
 Engineer/Architect III  
 25-0224 P8915  
 R25 PFT SS

Engineering Manager  
 Engineer/Architect II  
 25-0429 P8914  
 R23 PFT SS

Engineering Manager  
 Engineer/Architect II  
 25-0402 P8914  
 R23 PFT SS

Engineer/Architect I  
 25-0687 P8913  
 R22 PFT GG

Engineer/Architect I  
 Squad Leader  
 25-0599 P8913  
 R22 PFT GG

Engineer/Architect I  
 Consultant Coordinator  
 25-0671 P8913  
 R22 PFT GG

Engineer/Architect I  
 Squad Leader  
 25-0676 P8913  
 R22 PFT GG

Engineer/Architect I  
 Consultant Coordinator  
 25-0820 P8913  
 R22 PFT GG

Engineer/Architect I  
 Consultant Coordinator  
 25-3441 P8913  
 R22 PFT GG

Engineer Assistant III  
 25-3440 P8912  
 R21 PFT GG

Engineer Assistant III  
 25-0685 P8912  
 R21 PFT GG

Engineering Assistant I/II  
 25-0689 P8910/8911  
 R17/19 PFT GG

Engineer Assistant III  
 25-3439 P8912  
 R21 PFT GG

Engineer/Architect I  
 Consultant Coordinator  
 25-3442 P8913  
 R22 PFT GG

Engineering Assistant I/II  
 25-3438 P8910/8911  
 R17/19 PFT GG

Engineer Assistant I/II  
 25-0738 P8910/8911  
 R17/19 PFT GG

Engineering Assistant I/II  
 25-0808 P8910/8911  
 R17/19 PFT GG

Drafting Technician III  
 25-0705 P8425  
 R15 PFT GG

Drafting Technician III  
 25-0706 P8425  
 R15 PFT GG

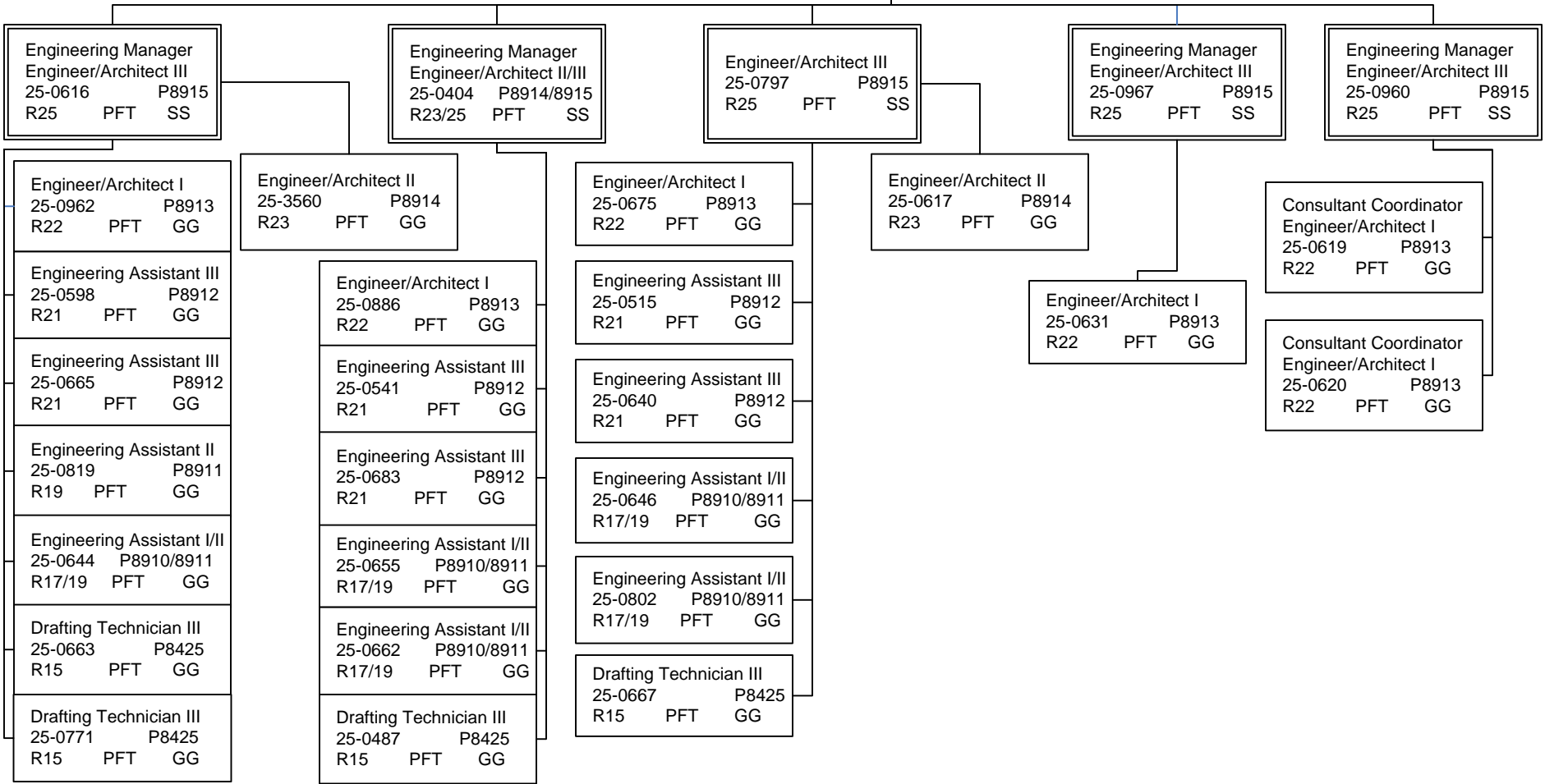
FY2014 GOVERNOR'S OPERATING BUDGET

RDU: DESIGN AND CONSTRUCTION

COMPONENT: CENTRAL DESIGN AND ENGINEERING SERVICES (2298)

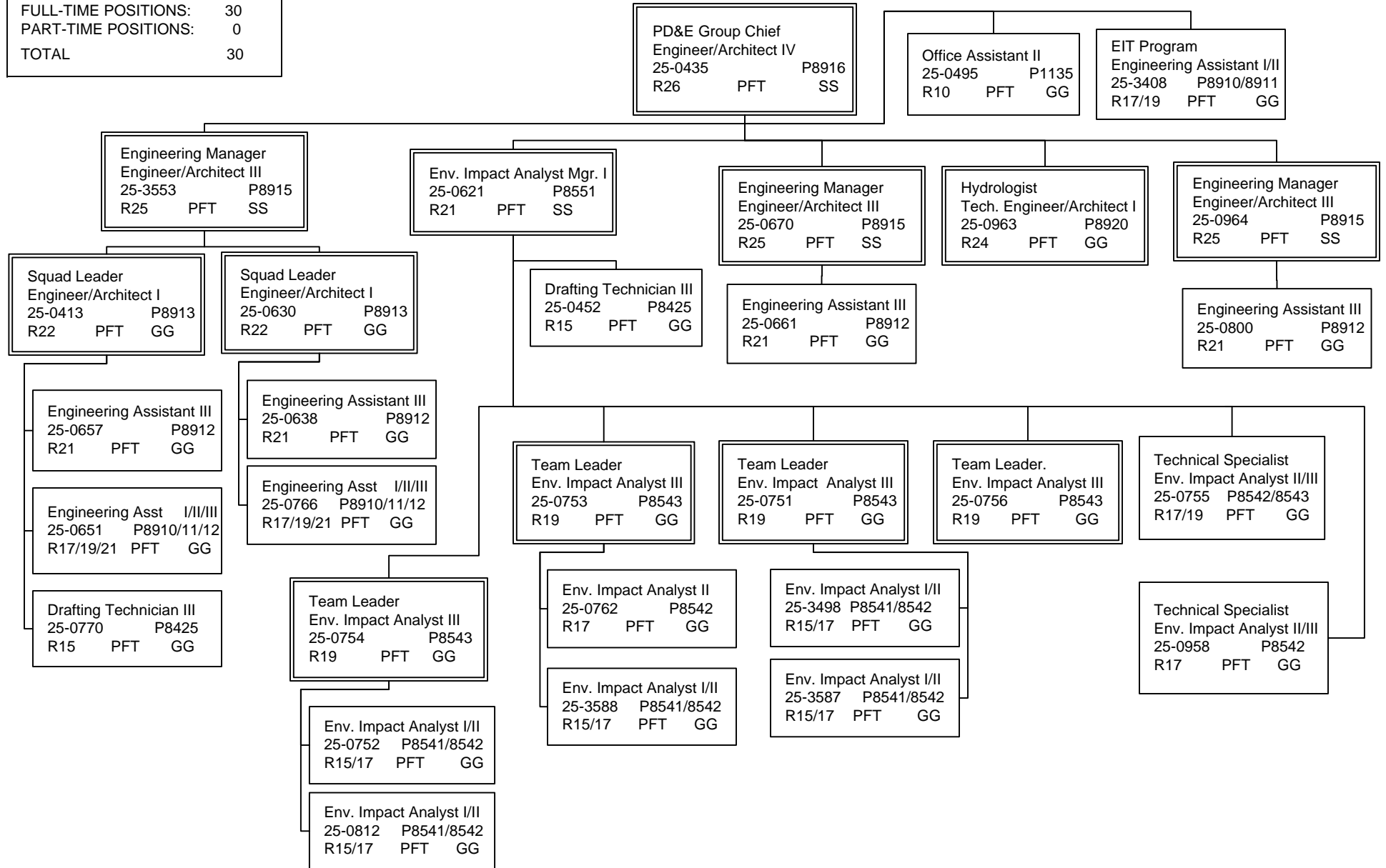
|                       |    |
|-----------------------|----|
| HIGHWAY DESIGN TOTAL: |    |
| FULL-TIME POSITIONS:  | 30 |
| PART-TIME POSITIONS:  | 0  |
| TOTAL                 | 30 |

|                            |       |    |
|----------------------------|-------|----|
| HIGHWAY DESIGN GROUP CHIEF |       |    |
| Engineer/Architect IV      |       |    |
| 25-0389                    | P8916 |    |
| R26                        | PFT   | SS |



FY2014 GOVERNOR'S OPERATING BUDGET  
 RDU: DESIGN AND CONSTRUCTION  
 COMPONENT: CENTRAL DESIGN AND ENGINEERING SERVICES (2298)

PRELIMINARY DESIGN TOTAL:  
 FULL-TIME POSITIONS: 30  
 PART-TIME POSITIONS: 0  
 TOTAL 30



FY2014 GOVERNOR'S OPERATING BUDGET  
 RDU: DESIGN AND CONSTRUCTION

COMPONENT: CENTRAL DESIGN AND ENGINEERING SERVICES (2298)

CHIEF OF RIGHT OF WAY  
 Right of Way Agent VI  
 25-0384 P2716  
 R23 PFT SS

ENGINEERING TITLE & LOCATIONS

Land Surveyor Mgr I  
 25-0423 K0714  
 R23 PFT SS

RIGHT OF WAY TOTAL:  
 FULL-TIME POSITIONS: 47  
 PART-TIME POSITIONS: 9  
 TOTAL 56

PREAUDIT/PROPERTY & DATABASE MGMT

HIGHWAY & AVIATION MGMT

ADMINISTRATIVE SERVICES

R/W Agent IV  
 25-2301 P2714  
 R20 PFT SS

R/W Agent IV  
 25-0473 P2714  
 R20 PFT SS

R/W Agent IV  
 25-0474 P2714  
 R20 PFT SS

Office Assistant IV  
 25-0497 P1136  
 R12 PFT SS

Land Surveyor I  
 25-0424 K0711  
 R21 PFT GG

Engineering Asst. I/II/III  
 25-0236 P8910/11/12  
 R17/19/21 PFT GG

Land Surveyor I  
 25-0929 K0711  
 R21 PFT GG

Engineering Asst. I/II/III  
 25-0479 P8910/11/12  
 R17/19/21 PFT GG

Survey Inst Tch II  
 25-0251 P9463  
 R17 PFT SS

Engineering Asst. I/II/III  
 25-0717 P8910/11/12  
 R17/19/21 PFT GG

R/W Agent III  
 25-0481 P2713  
 R18 PFT GG

R/W Agent III  
 25-0433 P2713  
 R18 PFT GG

R/W Agent III  
 25-0421 P2713  
 R18 PFT GG

Office Assistant II  
 25-0713 P1135  
 R10 PFT GG

Survey Tech Trainee  
 25-0252 P9461  
 R14 PFT GG

Engineering Assistant I/II  
 25-0501 P8910/8911  
 R17/19 PFT GG

R/W Agent III  
 25-3447 P2713  
 R18 PFT GG

R/W Agent III  
 25-0476 P2713  
 R18 PFT GG

R/W Agent III  
 25-0475 P2713  
 R18 PFT GG

Office Assistant II  
 25-0761 P1135  
 R10 PFT GG

R/W Assistant  
 25-0496 P2710  
 R12 PFT GG

Engineering Assistant I/II  
 25-3446 P8910/8911  
 R17/19 PFT GG

R/W Agent II  
 25-0427 P2712  
 R16 PFT GG

R/W Agent III  
 25-0480 P2713  
 R18 PFT GG

R/W Agent III  
 25-0477 P2713  
 R18 PFT GG

Office Assistant I  
 25-0468 P1134  
 R8 PFT GG

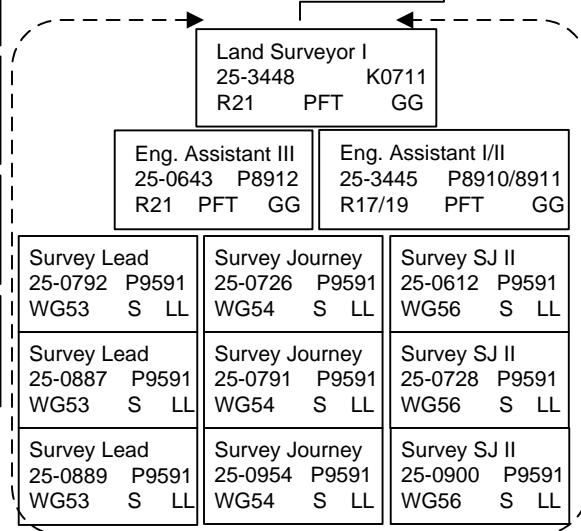
Survey Manager  
 Land Surveyor II  
 25-0632 K0712  
 R22 PFT SS

R/W Agent I/II  
 25-0500 P2711/2712  
 R14/16 PFT GG

R/W Agent II  
 25-0482 P2712  
 R16 PFT GG

R/W Agent II  
 25-0499 P2712  
 R16 PFT GG

R/W Agent III  
 25-0486 P2713  
 R18 PFT GG



Drafting Technician III  
 25-0488 P8425  
 R15 PFT GG

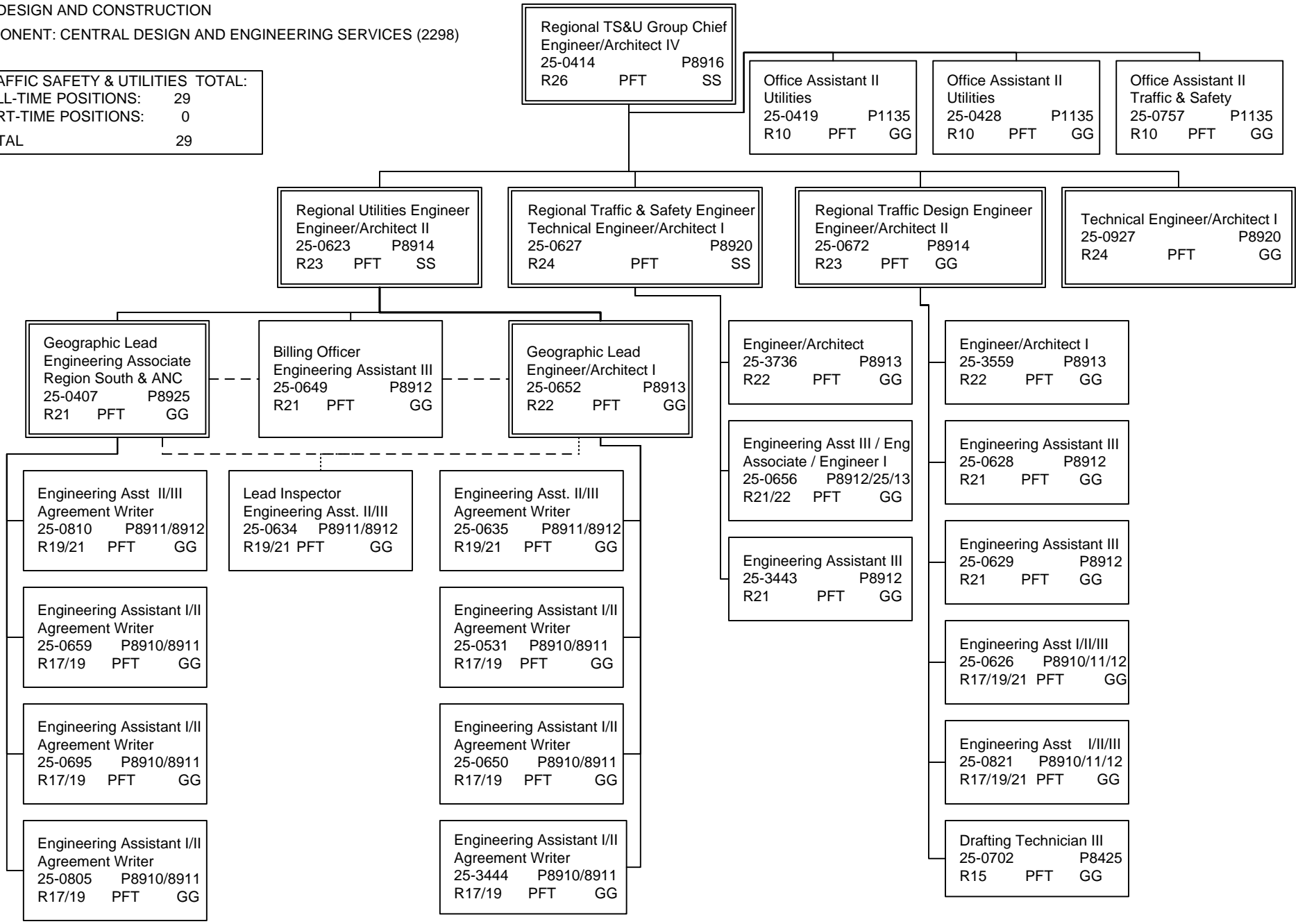
Drafting Technician III  
 25-0491 P8425  
 R15 PFT GG

FY2014 GOVERNOR'S OPERATING BUDGET

RDU: DESIGN AND CONSTRUCTION

COMPONENT: CENTRAL DESIGN AND ENGINEERING SERVICES (2298)

|                                   |    |
|-----------------------------------|----|
| TRAFFIC SAFETY & UTILITIES TOTAL: |    |
| FULL-TIME POSITIONS:              | 29 |
| PART-TIME POSITIONS:              | 0  |
| TOTAL                             | 29 |



FY2014 GOVERNOR'S OPERATING BUDGET

RDU: DESIGN AND CONSTRUCTION

COMPONENT: CENTRAL DESIGN AND ENGINEERING SERVICES (2298)

|                      |    |
|----------------------|----|
| MATERIALS TOTAL:     |    |
| FULL-TIME POSITIONS: | 12 |
| PART-TIME POSITIONS: | 11 |
| TOTAL                | 23 |

|                        |     |       |
|------------------------|-----|-------|
| MATERIALS ENGINEER     |     |       |
| Engineer/Architect III |     |       |
| 25-0387                |     | P8915 |
| R25                    | PFT | SS    |

|                      |     |       |
|----------------------|-----|-------|
| Engineer/Architect I |     |       |
| 25-0249              |     | P8913 |
| R22                  | PFT | GG    |

|                        |   |       |
|------------------------|---|-------|
| Mat Lab Tech – Foreman |   |       |
| 25-0736                |   | P9581 |
| WG51                   | S | LL    |

|                           |     |       |
|---------------------------|-----|-------|
| Lab Coordinator           |     |       |
| Engineering Assistant III |     |       |
| 25-0507                   |     | P8912 |
| R21                       | PFT | GG    |

|                                |     |       |
|--------------------------------|-----|-------|
| Regional Geologist Engineer    |     |       |
| Technical Engineer/Architect I |     |       |
| 25-0504                        |     | P8920 |
| R24                            | PFT | GG    |

|                                |     |       |
|--------------------------------|-----|-------|
| Regional Engineering Geologist |     |       |
| 25-0725                        |     | K0042 |
| R22                            | PFT | SS    |

|                          |     |       |
|--------------------------|-----|-------|
| Administrative Asst. III |     |       |
| 25-0242                  |     | K0053 |
| R15                      | PFT | GG    |

|                             |     |            |
|-----------------------------|-----|------------|
| Engineering Asst I/II (EIT) |     |            |
| 25-3459                     |     | P8910/8911 |
| R17/19                      | PFT | GG         |

|                              |     |            |
|------------------------------|-----|------------|
| Engineering Assistant II/III |     |            |
| 25-0733                      |     | P8911/8912 |
| R19/21                       | PFT | GG         |

|                              |     |            |
|------------------------------|-----|------------|
| Engineering Assistant II/III |     |            |
| 25-0241                      |     | P8911/8912 |
| R19/21                       | PFT | GG         |

|                     |     |       |
|---------------------|-----|-------|
| Office Assistant II |     |       |
| 25-0739             |     | P1135 |
| R10                 | PFT | GG    |

|                                |   |       |
|--------------------------------|---|-------|
| Mat Lab Tech – Lead Specialist |   |       |
| 25-0605                        |   | P9581 |
| WG52                           | S | LL    |

|                     |   |       |
|---------------------|---|-------|
| MatLab Tech Journey |   |       |
| 25-0590             |   | P9581 |
| WG53                | S | LL    |

|                            |   |       |
|----------------------------|---|-------|
| MatLab Tech Sub-Journey IV |   |       |
| 25-0893                    |   | P9581 |
| WG54                       | S | LL    |

|                     |   |       |
|---------------------|---|-------|
| MatLab Tech Journey |   |       |
| 25-0721             |   | P9581 |
| WG53                | S | LL    |

|                            |   |       |
|----------------------------|---|-------|
| MatLab Tech Sub-Journey IV |   |       |
| 25-1504                    |   | P9581 |
| WG54                       | S | LL    |

|                     |   |       |
|---------------------|---|-------|
| MatLab Tech Journey |   |       |
| 25-0741             |   | P9581 |
| WG53                | S | LL    |

|                            |   |       |
|----------------------------|---|-------|
| MatLab Tech Sub-Journey IV |   |       |
| 25-1517                    |   | P9581 |
| WG54                       | S | LL    |

|                     |   |       |
|---------------------|---|-------|
| MatLab Tech Journey |   |       |
| 25-0743             |   | P9581 |
| WG53                | S | LL    |

|                            |   |       |
|----------------------------|---|-------|
| MatLab Tech Sub-Journey IV |   |       |
| 25-1649                    |   | P9581 |
| WG54                       | S | LL    |

|                             |   |       |
|-----------------------------|---|-------|
| MatLab Tech Sub-Journey III |   |       |
| 25-0747                     |   | P9581 |
| WG56                        | S | LL    |

|                          |     |       |
|--------------------------|-----|-------|
| Engineering Geologist II |     |       |
| 25-0925                  |     | P8387 |
| R18                      | PFT | GG    |

|                         |     |       |
|-------------------------|-----|-------|
| Engineering Geologist I |     |       |
| 25-0724                 |     | P8386 |
| R16                     | PFT | GG    |

FY2014 GOVERNOR'S OPERATING BUDGET  
 RDU: DESIGN AND CONSTRUCTION

COMPONENT: CENTRAL DESIGN AND ENGINEERING SERVICES (2298)

|                      |    |
|----------------------|----|
| NON-PERM TOTAL:      |    |
| FULL-TIME POSITIONS: | 0  |
| PART-TIME POSITIONS: | 0  |
| NON-PERM POSITIONS:  | 22 |
| TOTAL                | 22 |

COLLEGE INTERNS

|                                     |
|-------------------------------------|
| College Intern I<br>25-IN1209 R8 EE |
|-------------------------------------|

|  |
|--|
| College Intern I/II<br>25-IN1215 R8/9 EE |
|--|

|  |
|--|
| College Intern I/II<br>25-IN1222 R8/9 EE |
|--|

|   |
|---|
| College Intern II/III<br>25-IN1208 R9/10 EE |
|---|

|  |
|--|
| College Intern III/IV<br>25-IN1229 R10/12 EE |
|--|

|                                     |
|-------------------------------------|
| College Intern I<br>25-IN1210 R8 EE |
|-------------------------------------|

|  |
|--|
| College Intern I/II<br>25-IN1216 R8/9 EE |
|--|

|  |
|--|
| College Intern I/II<br>25-IN1223 R8/9 EE |
|--|

|   |
|---|
| College Intern II/III<br>25-IN1228 R9/10 EE |
|---|

|                                     |
|-------------------------------------|
| College Intern I<br>25-IN1211 R8 EE |
|-------------------------------------|

|  |
|--|
| College Intern I/II<br>25-IN1217 R8/9 EE |
|--|

|  |
|--|
| College Intern I/II<br>25-IN1224 R8/9 EE |
|--|

|   |
|---|
| College Intern II/III<br>25-IN1220 R9/10 EE |
|---|

|                                     |
|-------------------------------------|
| College Intern I<br>25-IN1212 R8 EE |
|-------------------------------------|

|  |
|--|
| College Intern I/II<br>25-IN1218 R8/9 EE |
|--|

|  |
|--|
| College Intern I/II<br>25-IN1225 R8/9 EE |
|--|

|                                     |
|-------------------------------------|
| College Intern I<br>25-IN1213 R8 EE |
|-------------------------------------|

|  |
|--|
| College Intern I/II<br>25-IN1219 R8/9 EE |
|--|

|  |
|--|
| College Intern I/II<br>25-IN1226 R8/9 EE |
|--|

|                                     |
|-------------------------------------|
| College Intern I<br>25-IN1214 R8 EE |
|-------------------------------------|

|  |
|--|
| College Intern I/II<br>25-IN1221 R8/9 EE |
|--|

|  |
|--|
| College Intern I/II<br>25-IN1227 R8/9 EE |
|--|