

# ALASKA MARINE HIGHWAY SYSTEM

Marine Shore Operations

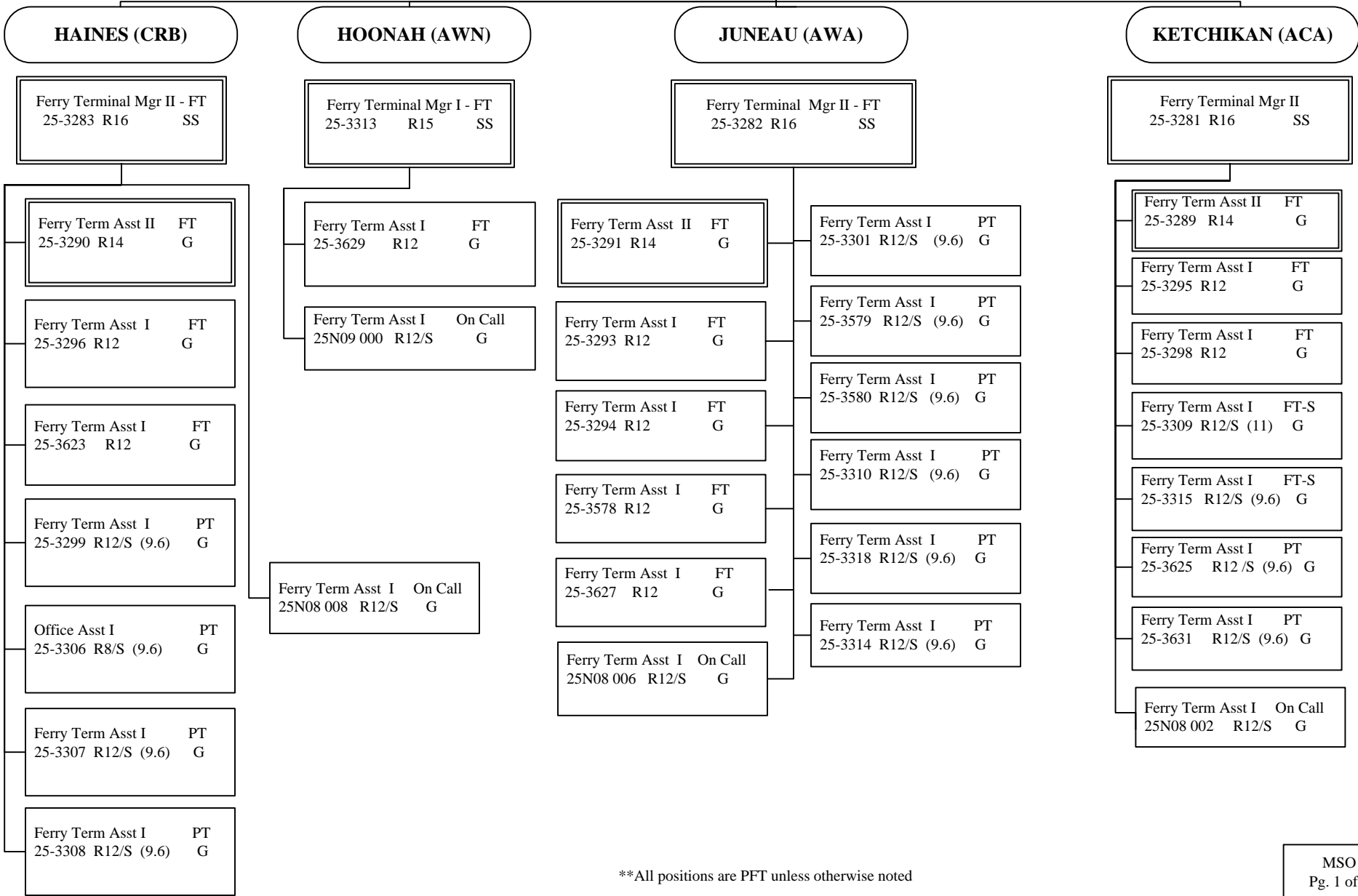
SOUTHEAST TERMINALS

FY14 GOVERNOR'S BUDGET

**Business Enterp & Development  
Manager  
25-3602**

**Ferry Terminal Operations Mgr – FT  
25-3331 R18 KTN SS**

Terminal Ops Asst - FT  
25-3617 R12 KTN G



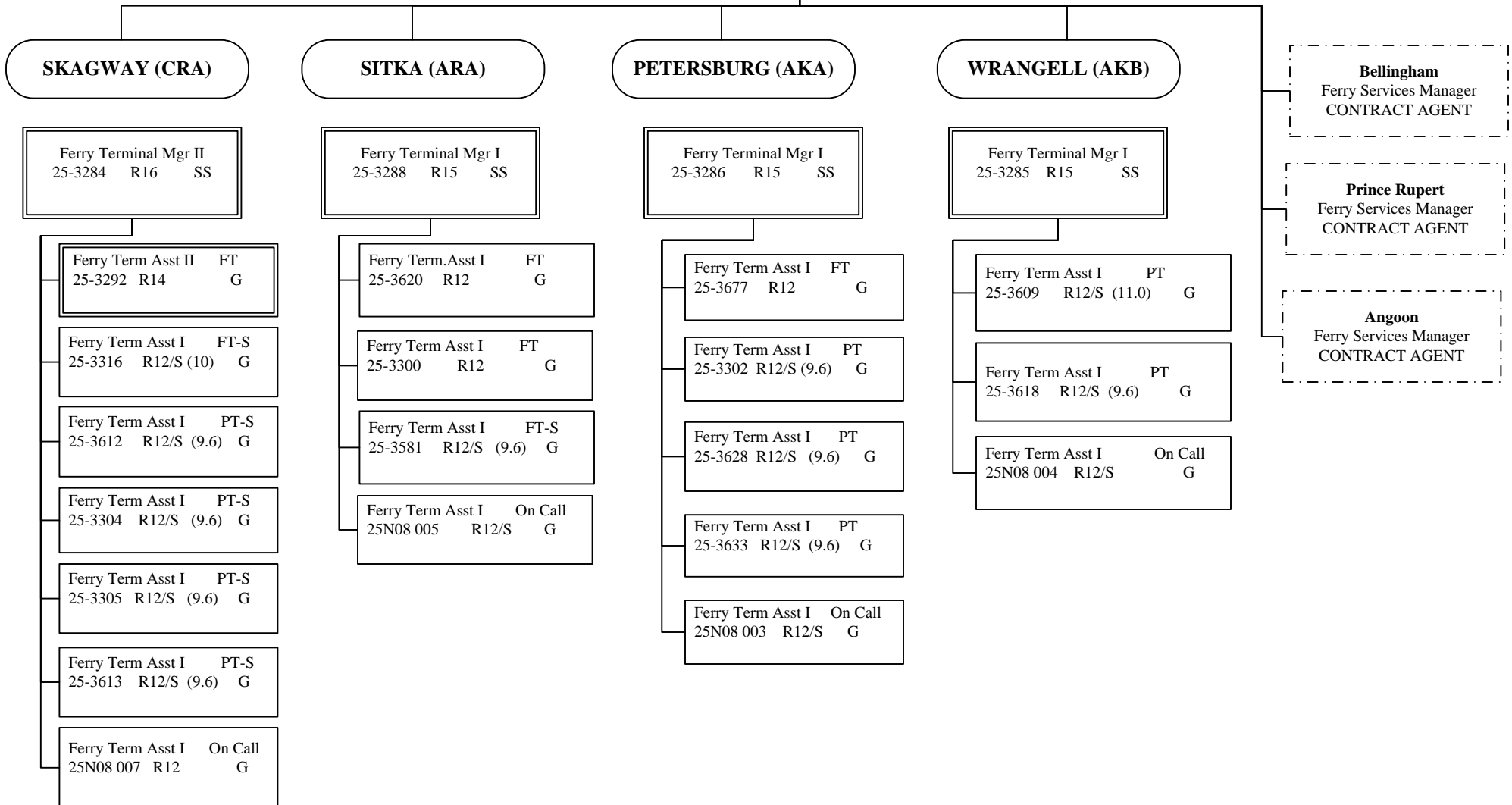
\*\*All positions are PFT unless otherwise noted

# ALASKA MARINE HIGHWAY SYSTEM

## Marine Shore Operations SOUTHEAST TERMINALS FY14 GOVERNOR'S BUDGET

**Business Enterprise and  
Development Manager**  
25-3602

**Terminal Operations Mgr**  
25-3331 See SE Terminal Pg. 1



\*\*All positions are PFT unless otherwise noted.

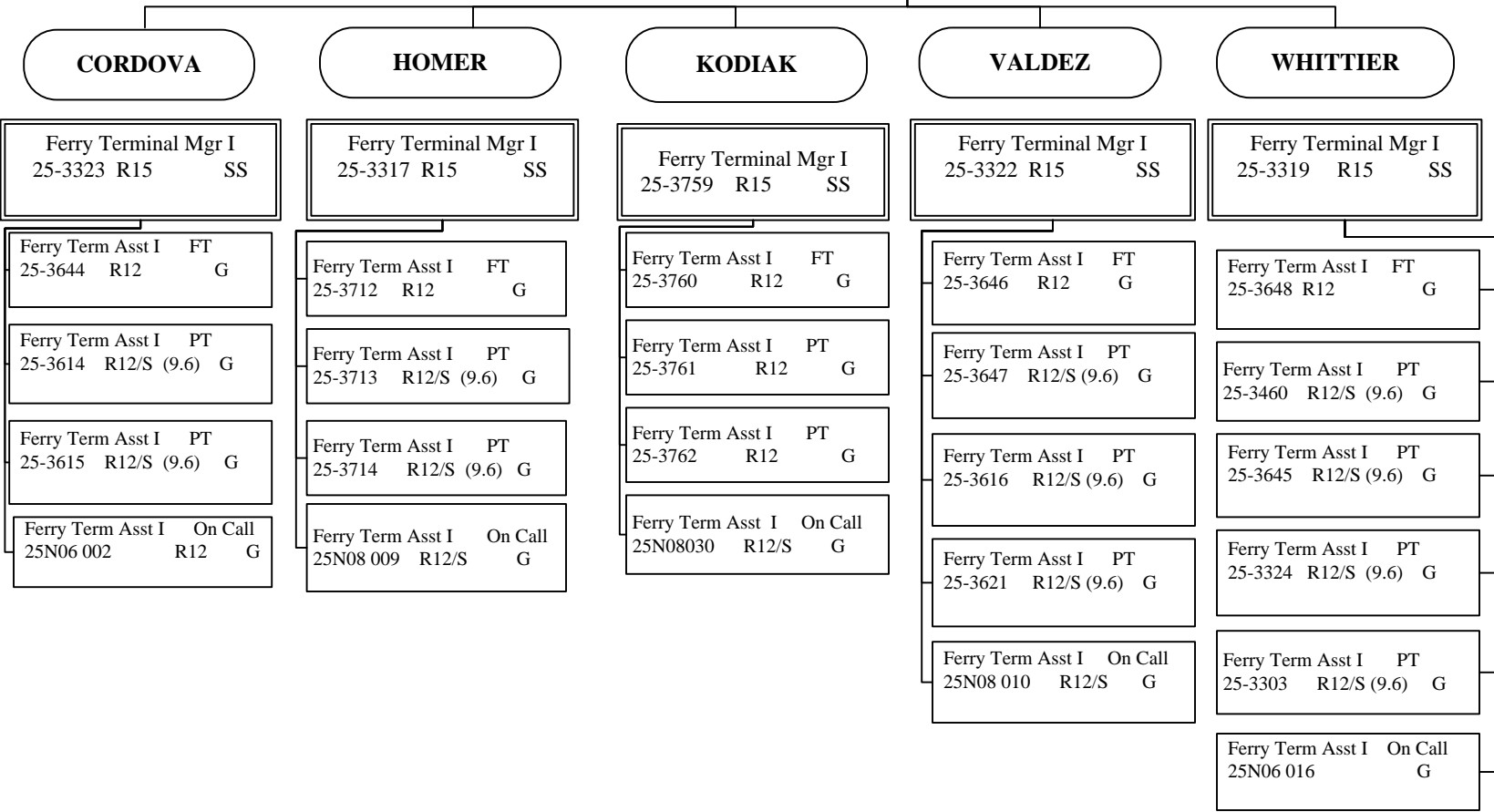
# ALASKA MARINE HIGHWAY SYSTEM

## Marine Shore Operations SOUTHWEST TERMINALS FY14 GOVERNOR'S BUDGET

**Business Enterp &  
Development Manager**  
25-3602

**Terminal Operations Mgr**  
25-3331 see SE Terminals Pg. 1

**SELDOVIA**  
Ferry Services Mgr  
CONTRACT AGENT



\*\*All positions are PFT unless otherwise noted.