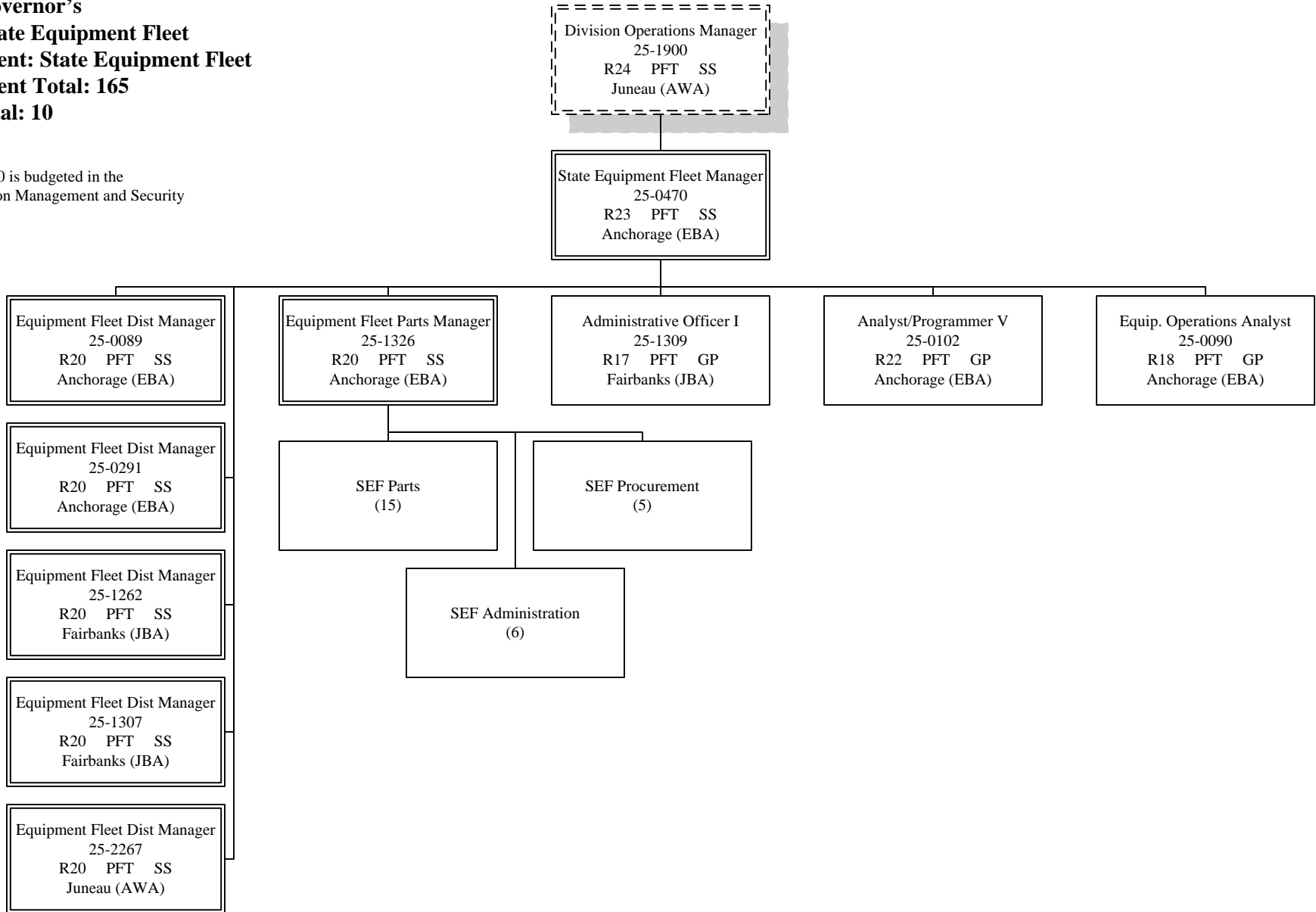


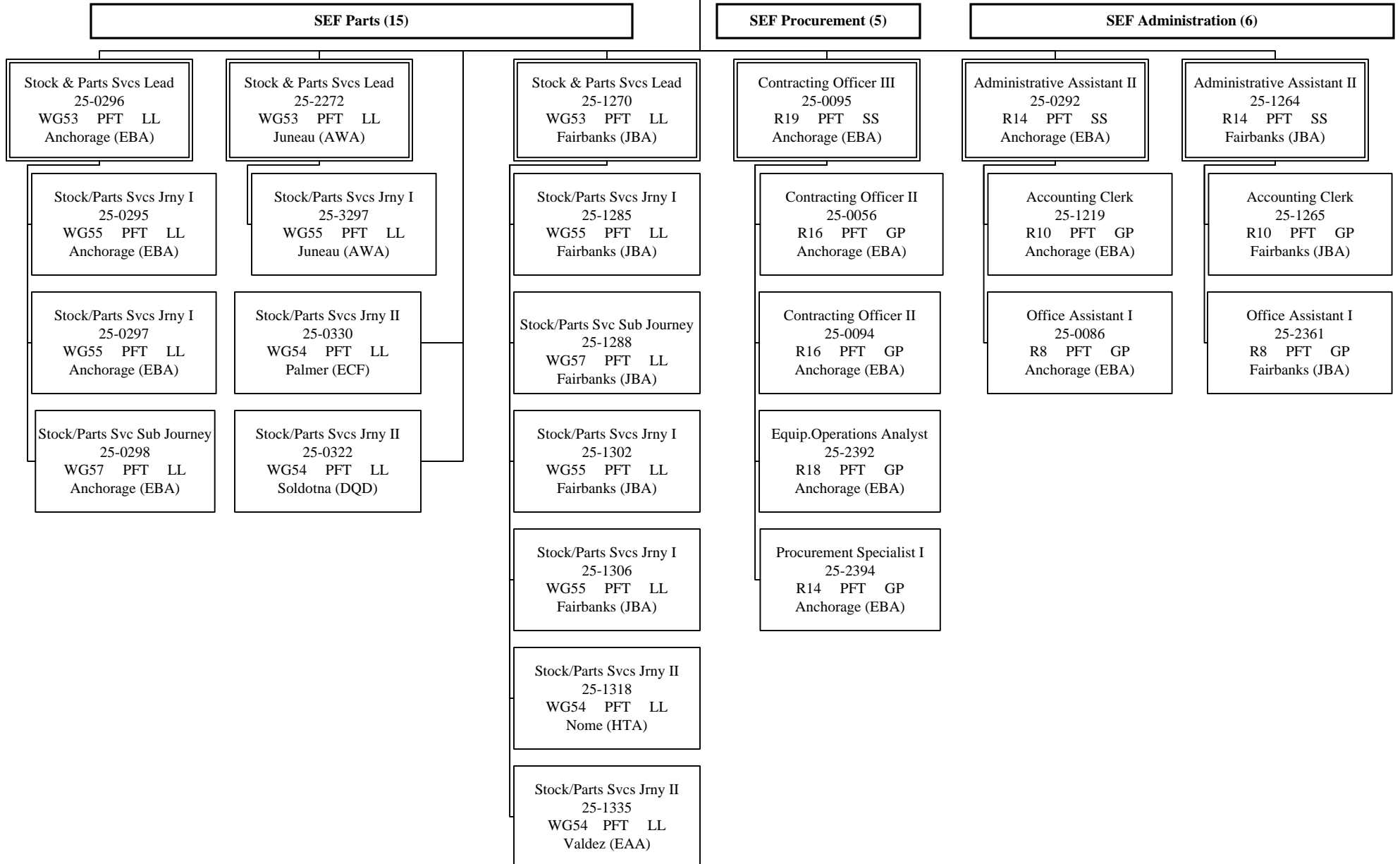
**FY14 Governor's
RDU: State Equipment Fleet
Component: State Equipment Fleet
Component Total: 165
Page Total: 10**

PCN 25-1900 is budgeted in the Transportation Management and Security component.



Equipment Fleet Parts Manager
 25-1326
 R20 PFT SS
 Anchorage (EBA)

State Equipment Fleet Manager
 25-0470
 R23 PFT SS
 Anchorage (EBA)



Equipment Fleet Dist Manager
 25-0089
 R20 PFT SS
 Anchorage (EBA)

State Equipment Fleet Manager
 25-0470
 R23 PFT SS
 Anchorage (EBA)

Mech Auto Foreman II
 25-0300
 WG51 PFT LL
 Anchorage (EBA)

Mech Auto Foreman II
 25-0299
 WG51 PFT LL
 Anchorage (EBA)

Mech Auto Foreman II
 25-0323
 WG51 PFT LL
 Palmer (ECF)

Mech Auto Adv Journey
 25-0311
 WG53 PFT LL
 Anchorage (EBA)

Mech Auto Adv Journey
 25-0315
 WG53 PFT LL
 Anchorage (EBA)

Mech Auto Adv Journey
 25-0301
 WG53 PFT LL
 Anchorage (EBA)

Mech Auto Adv Journey
 25-0302
 WG53 PFT LL
 Anchorage (EBA)

Mech Auto Adv Journey
 25-0313
 WG53 PFT LL
 Palmer (ECF)

Mech Auto Adv Journey
 25-0324
 WG53 PFT LL
 Palmer (ECF)

Mech Auto Adv Journey
 25-0329
 WG53 PFT LL
 Anchorage (EBA)

Mech Auto Adv Journey
 25-0337
 WG53 PFT LL
 Anchorage (EBA)

Mech Auto Adv Journey
 25-0303
 WG53 PFT LL
 Anchorage (EBA)

Mech Auto Adv Journey
 25-0304
 WG53 PFT LL
 Anchorage (EBA)

Mech Auto Adv Journey
 25-0325
 WG53 PFT LL
 Palmer (ECF)

Mech Auto Adv Journey
 25-0326
 WG53 PFT LL
 Palmer (ECF)

Mech Auto Adv Journey
 25-0340
 WG53 PFT LL
 Anchorage (EBA)

Mech Auto Adv Journey
 25-0342
 WG53 PFT LL
 Anchorage (EBA)

Mech Auto Adv Journey
 25-0305
 WG53 PFT LL
 Anchorage (EBA)

Mech Auto Adv Journey
 25-0306
 WG53 PFT LL
 Anchorage (EBA)

Mech Auto Adv Journey
 25-0327
 WG53 PFT LL
 Palmer (ECF)

Mech Auto Adv Journey
 25-0328
 WG53 PFT LL
 Palmer (ECF)

Mech Auto Sub Journey
 25-1514
 WG56 PFT LL
 Anchorage (EBA)

Mech Auto Adv Journey
 25-3360
 WG53 PFT LL
 Anchorage (EBA)

Mech Auto Adv Journey
 25-0308
 WG53 PFT LL
 Anchorage (EBA)

Mech Auto Adv Journey
 25-0309
 WG53 PFT LL
 Anchorage (EBA)

Mech Auto Adv Journey
 25-0615
 WG53 PFT LL
 Palmer (ECF)

Mech Auto Adv Journey
 25-3362
 WG53 PFT LL
 Palmer (ECF)

Mech Auto Adv Journey
 25-0310
 WG53 PFT LL
 Anchorage (EBA)

Mech Auto Adv Journey
 25-0864
 WG53 PFT LL
 Anchorage (EBA)

Mech Auto Adv Journey
 25-0334
 WG53 PFT LL
 Silvertip (DSG)

Mech Auto Adv Journey
 25-0344
 WG53 PFT LL
 Chulitna (HBA)

Mech Auto Adv Journey
 25-0780
 WG53 PFT LL
 McGrath (EZA)

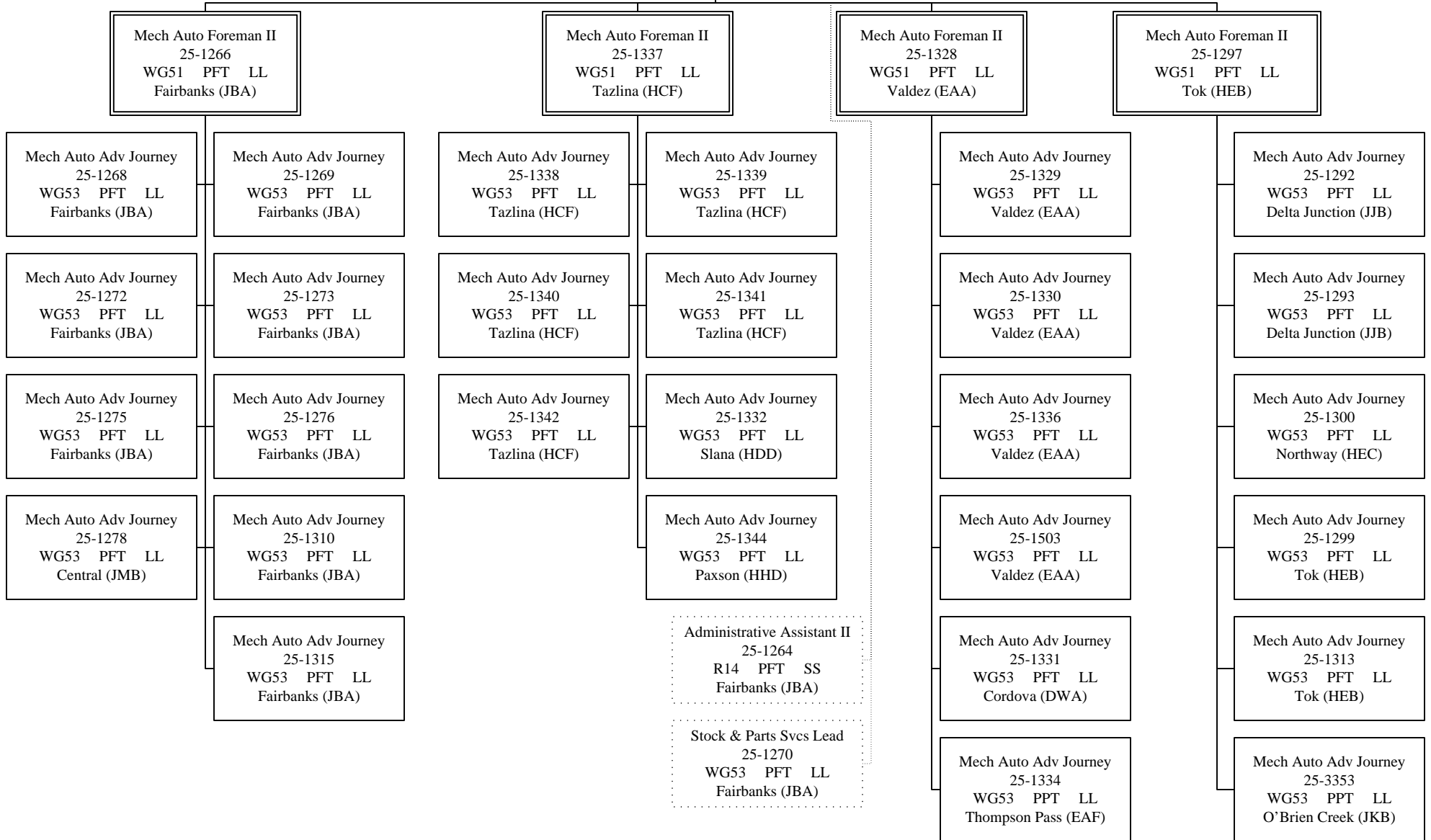
Administrative Assistant II
 25-0292
 R14 PFT SS
 Anchorage (EBA)

Stock & Parts Svcs Lead
 25-0296
 WG53 PFT LL
 Anchorage (EBA)

**FY14 Governor's
RDU: State Equipment Fleet
Component: State Equipment Fleet
Component Total: 165
Page Total: 32**

Equipment Fleet Dist Manager
25-1262
R20 PFT SS
Fairbanks (JBA)

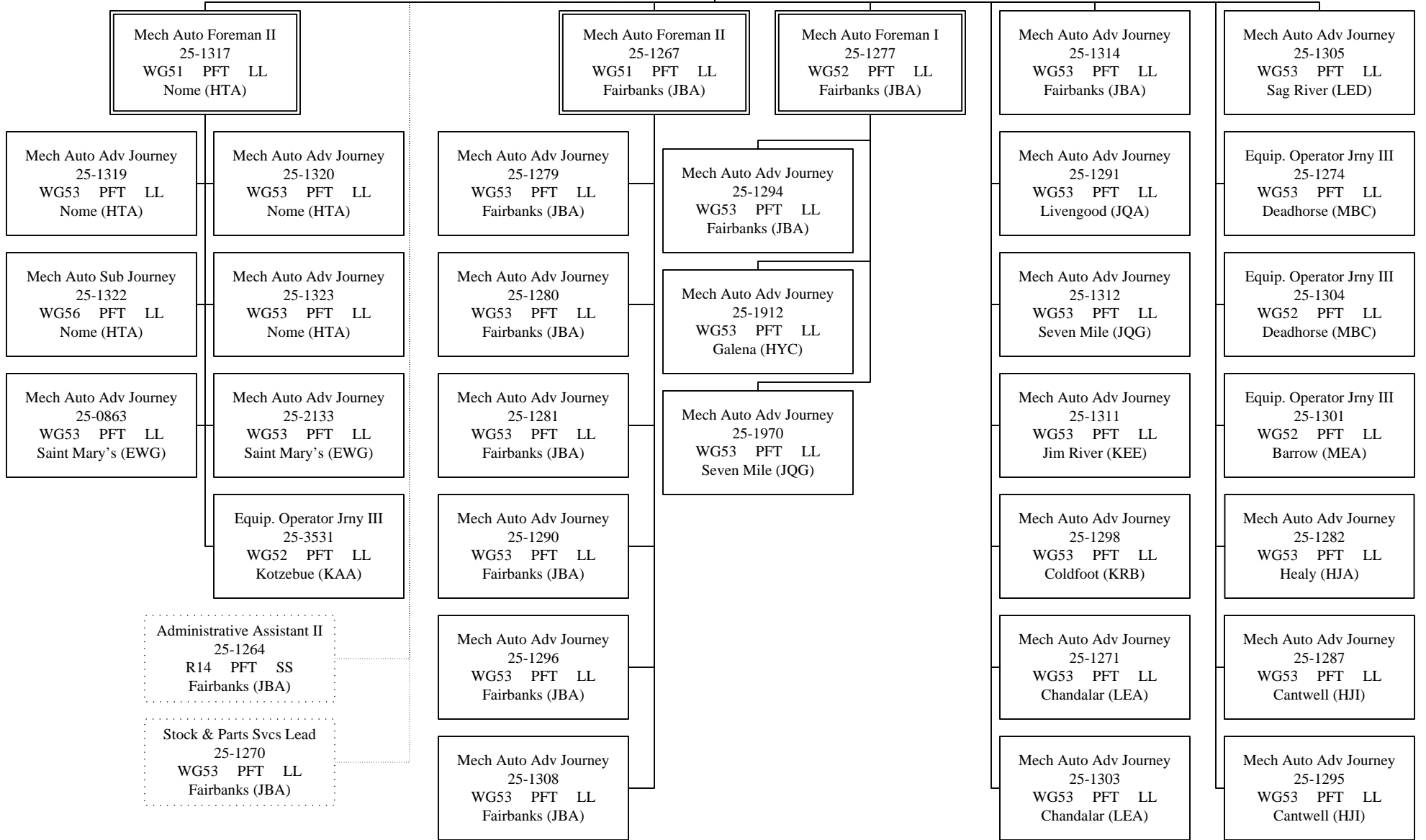
State Equipment Fleet Manager
25-0470
R23 PFT SS
Anchorage (EBA)



**FY14 Governor's
RDU: State Equipment Fleet
Component: State Equipment Fleet
Component Total: 165
Page Total: 33**

Equipment Fleet Dist Manager
25-1307
R20 PFT SS
Fairbanks (EBA)

State Equipment Fleet Manager
25-0470
R23 PFT SS
Anchorage (EBA)



**FY14 Governor's
RDU: State Equipment Fleet
Component: State Equipment Fleet
Component Total: 165
Page Total: 12**

Equipment Fleet Dist. Manager
25-2267
R20 PFT SS
Juneau (AWA)

State Equipment Fleet Manager
25-0470
R23 PFT SS
Anchorage (EBA)

Mech Auto Foreman I
25-3280
WG52 PFT LL
Juneau (AWA)

Mech Auto Adv Journey
25-2271
WG53 PFT LL
Skagway (CRA)

Mech Auto Adv Journey
25-2273
WG53 PFT LL
Haines (CRB)

Equip. Operator Jrny III
25-2274
WG52 PFT LL
Wrangell (AKB)

Mech Auto Adv Journey
25-2275
WG53 PFT LL
Ketchikan (ACA)

Equip. Operator Jrny III
25-2277
WG52 PFT LL
Petersburg (AKA)

Mech Auto Adv Journey
25-0331
WG53 PFT LL
Juneau (AWA)

Equip. Operator Jrny III
25-2278
WG52 PFT LL
Yakutat (CSA)

Mech Auto Adv Journey
25-2281
WG53 PFT LL
Klawock (AEB)

Equip. Operator Jrny III
25-3533
WG52 PFT LL
Sitka (ARA)

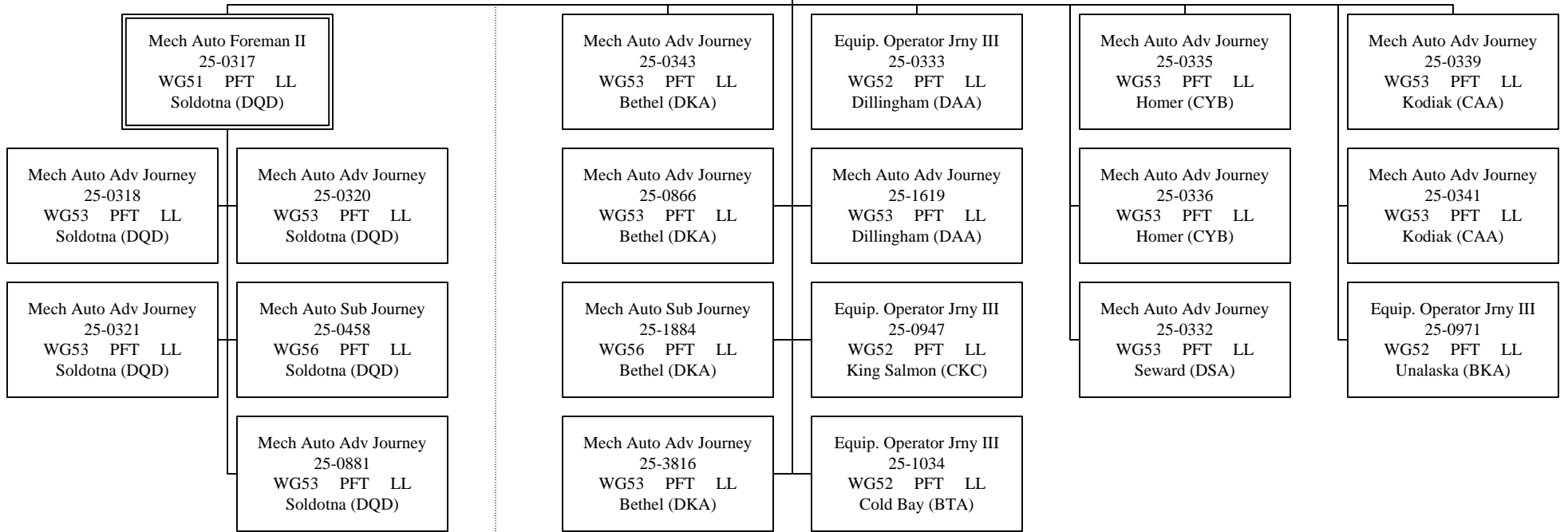
Mech Auto Adv Journey
25-2270
WG53 PFT LL
Juneau (AWA)

Stock & Parts Svcs Lead
25-2272
WG53 PFT LL
Juneau (AWA)

Mech Auto Adv Journey
25-2276
WG53 PFT LL
Juneau (AWA)

Equipment Fleet Dist Manager
25-0291
R20 PFT SS
Anchorage (EBA)

State Equipment Fleet Manager
25-0470
R23 PFT SS
Anchorage (EBA)



Administrative Assistant II
25-0292
R14 PFT SS
Anchorage (EBA)

Stock & Parts Svcs Lead
25-0296
WG53 PFT LL
Anchorage (EBA)