

Department of Transportation & Public Facilities
 RDU: Administrative Services
 COMPONENT: Statewide Administrative Services
 FY2014 Governor

Legend
 AWA = Juneau

Director
 AWA XE
 25-0043 R27

Div Oper Mgr
 AWA SS
 25-3113 R24

Div Oper Mgr
 AWA SS
 25-0071 R24

Grants & Projects

Fiscal/Operating
 Finance (see pg 2)

Budget

Human Resources
 (see pg 3)

Administrative

Procurement

Web Design

Info Systems

Accountant V
 AWA SS
 25-3799 R22

Accountant V
 AWA SS
 25-0028 R22

Budget Manager
 AWA SS
 25-2312 R22

Human Resource Mgr I
 AWA KK
 02-2033 R22

Admin Oper Mgr I
 AWA SS
 25-0172 R22

Procurement Spec V
 AWA SS
 25-0051 R21

Internet Specialist II
 AWA GP
 25-0374 R19

DP Mgr III
 AWA SS
 25-0136 R24

Accountant IV
 AWA SS
 25-0072 R20

Accountant IV
 AWA SS
 25-2867 R20

Budget Analyst IV
 AWA GG
 25-0152 R21

Admin Officer II
 AWA SS
 25-0117 R19

Accountant II
 AWA GP
 25-1289 R16

Accounting Tech II
 AWA GP
 25-2904 R14

Budget Analyst III/IV
 AWA GP
 25-0151 R19/21

Admin Asst I
 AWA GP
 25-3114 R12

Accounting Tech I
 AWA GP
 25-0076 R12

Office Assistant II
 AWA GP
 25-0050 R10

Accountant III
 AWA SS
 25-0062 R18

Accounting Tech III
 AWA GP
 25-0067 R16

Accounting Tech I
 AWA GP
 25-0077 R12

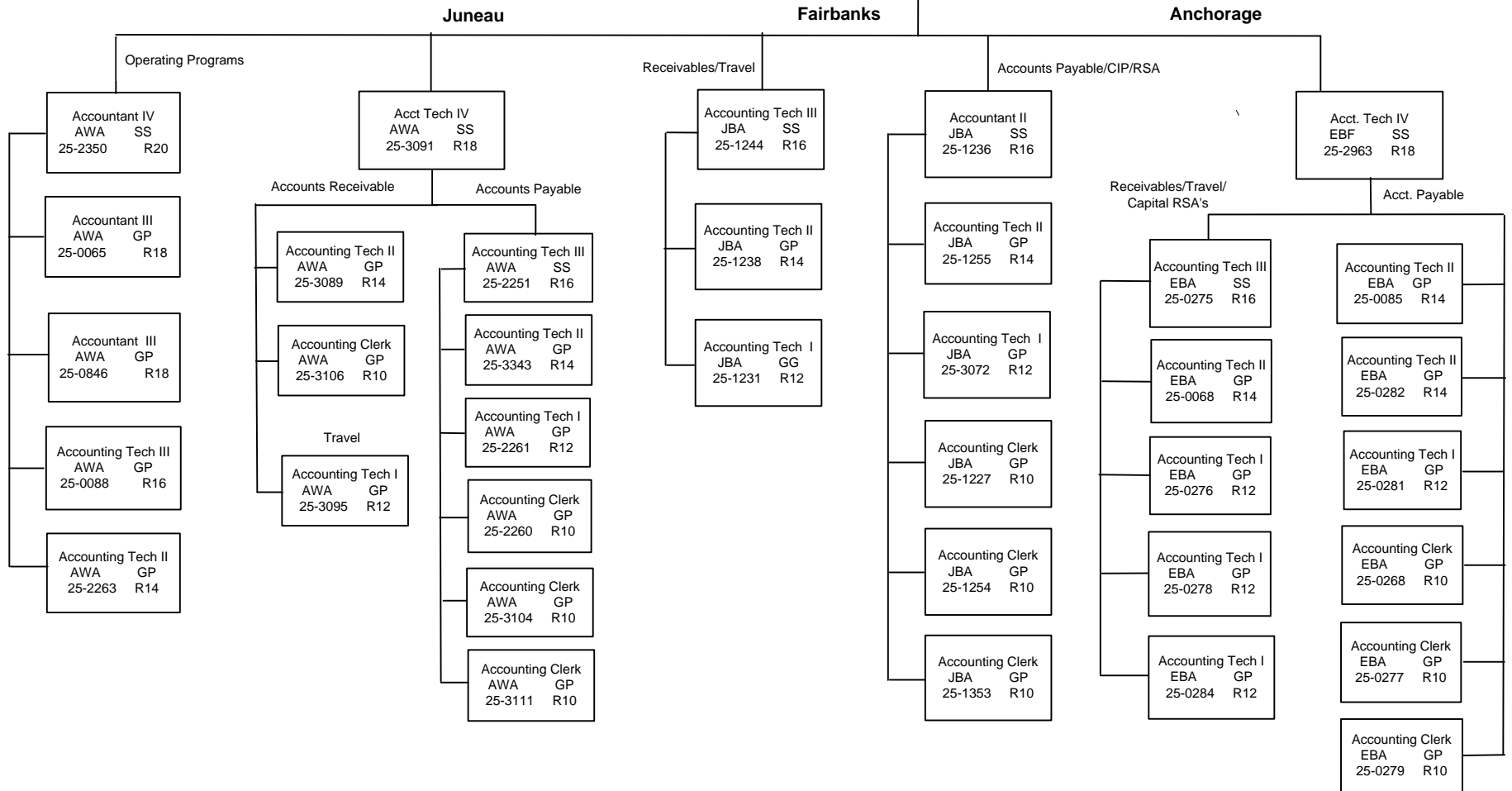
Department of Transportation and Public Facilities
 RDU: Administrative Services
 COMPONENT: Statewide Administrative Services
 FY2014 Governor

Legend
 AWA = Juneau
 JBA = Fairbanks
 EBA = Anchorage
 EBF = Anch. Int'l Airport

Director
 AWA XE
 25-0043 R27

Div Oper Mgr
 AWA SS
 25-3113 R24

Accountant V
 AWA SS
 25-0028 R22



Department of Transportation and Public Facilities
 RDU: Administrative Services
 COMPONENT: Statewide Administrative Services
 FY2014 Governor

Legend
 AWA = Juneau
 EBA = Anchorage

