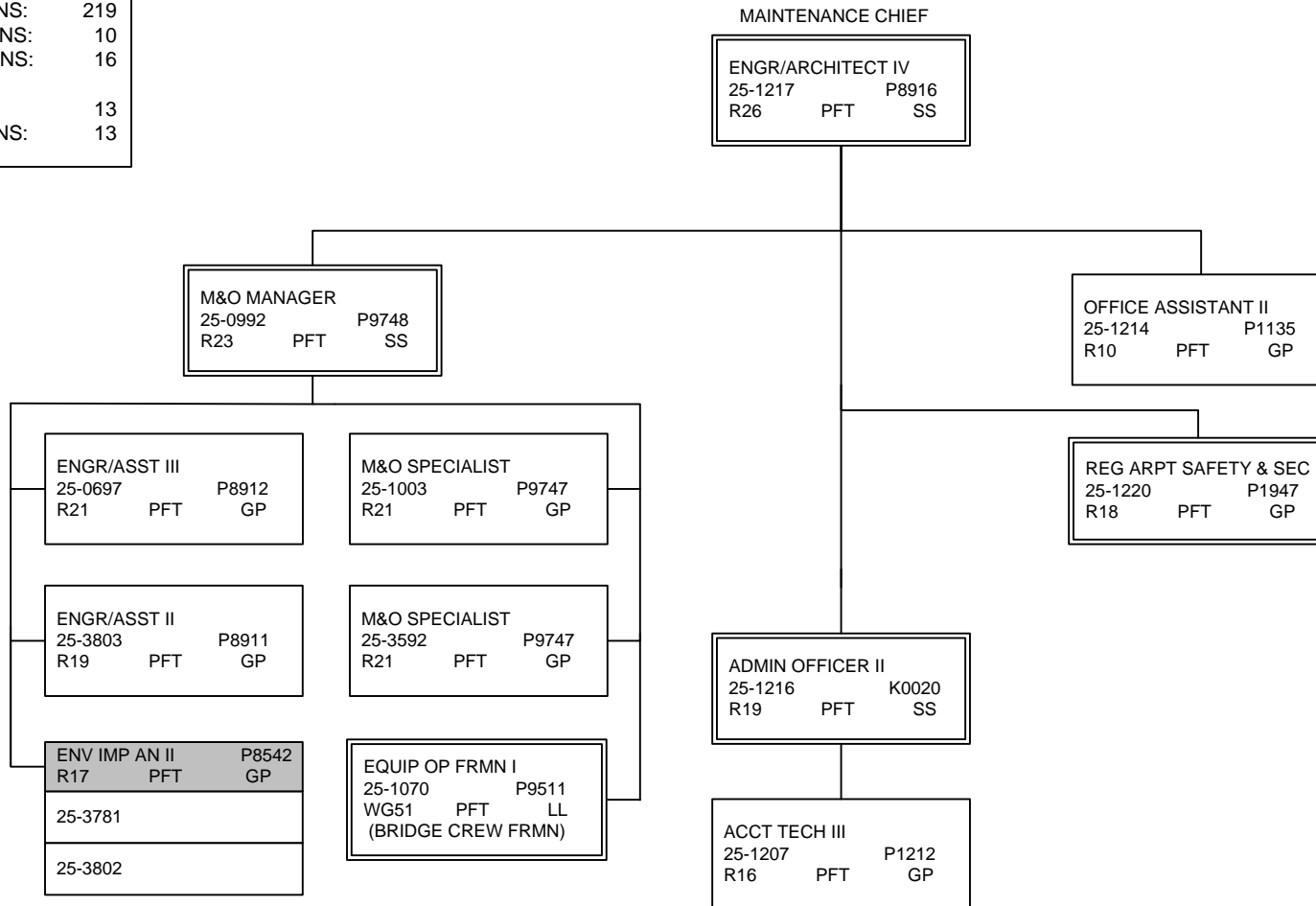


FY2014 GOVERNOR'S OPERATING BUDGET
 RDU: HIGHWAYS & AVIATION
 COMPONENT: CENTRAL REGION HIGHWAYS & AVIATION (564)

M&O ADMINISTRATION

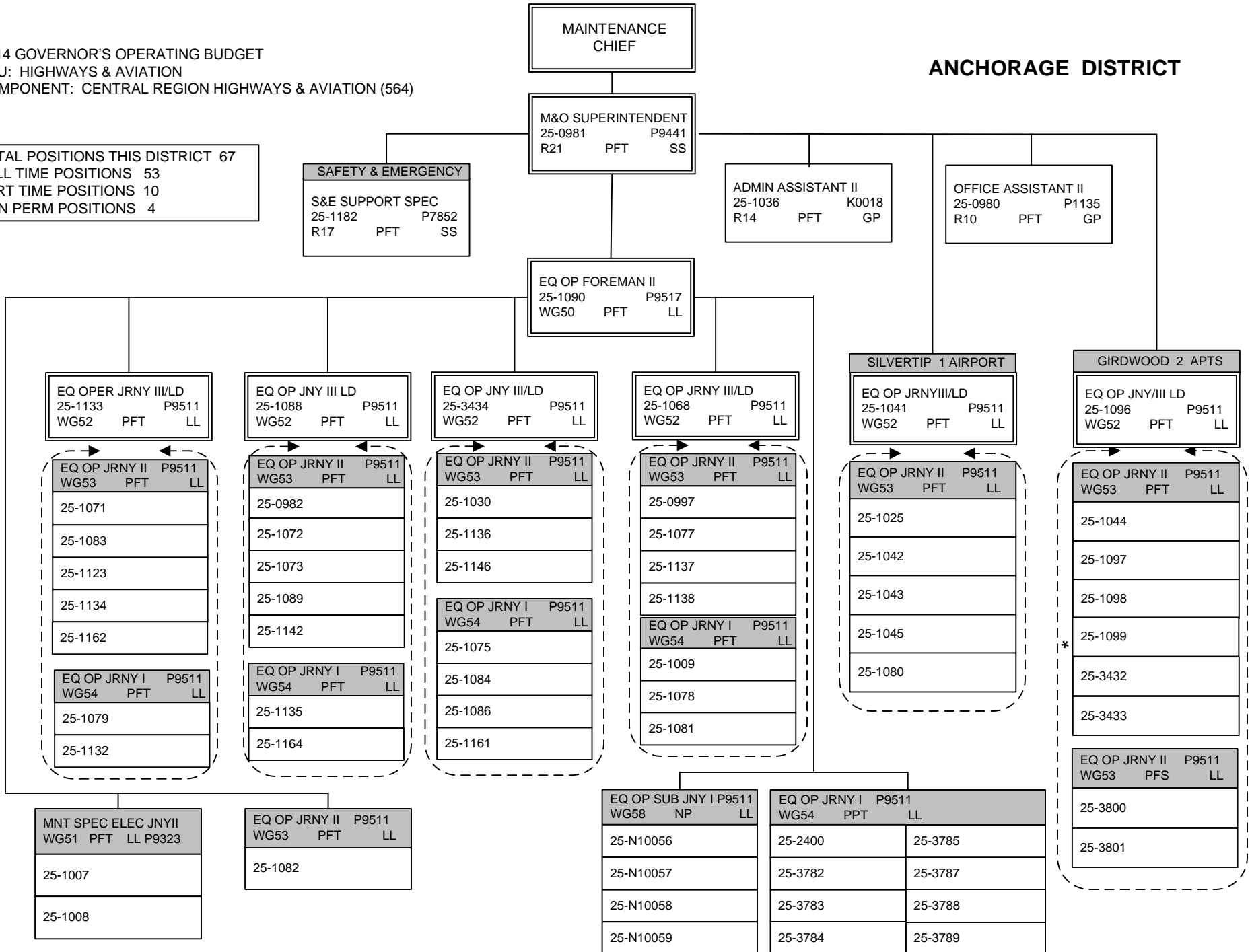
COMPONENT TOTAL:	245
FULLTIME POSITIONS:	219
PARTTIME POSITIONS:	10
NONPERM POSITIONS:	16
PAGE TOTAL:	13
FULLTIME POSITIONS:	13



FY14 GOVERNOR'S OPERATING BUDGET
 RDU: HIGHWAYS & AVIATION
 COMPONENT: CENTRAL REGION HIGHWAYS & AVIATION (564)

ANCHORAGE DISTRICT

TOTAL POSITIONS THIS DISTRICT 67
 FULL TIME POSITIONS 53
 PART TIME POSITIONS 10
 NON PERM POSITIONS 4



* PCN 25-1099: Works under supervision of PCN 25-1070 Bridge for 6-months of the year and under supervision of PCN 25-1182 Avalanche for 6-months

FY2014 GOVERNOR'S OPERATING BUDGET
 RDU: HIGHWAYS & AVIATION
 COMPONENT: CENTRAL REGION HIGHWAYS & AVIATION (564)

TOTAL POSITIONS THIS DISTRICT 42
 FULL TIME POSITIONS 38
 NON PERM POSITIONS 4

MATSU DISTRICT

MAINTENANCE CHIEF
 M&O SUPERINTENDENT
 25-1187 P9441
 R21 PFT SS

MTN SPEC ELEC JNY II P9325
 WG51 PFT LL (DISTRICTWIDE)
 25-0549
 25-1102

ACCT TECH II
 25-0979 P1211
 R14 PFT GP

OFFICE ASSISTANT II
 25-0935 P1135
 R10 PFT GP

CASCADE 1 AIRPORT
 EQ OPER JNY III/LD
 25-1109 P9511
 WG52 PFT LL

CHULITNA 0 AIRPORTS
 EQ OPER JNY III/LD
 25-1104 P9511
 WG52 PFT LL

PALMER 3 AIRPORTS
 EQ OPER FRMN I
 25-1046 P9511
 WG51 PFT LL

MCGRATH 6 AIRPORTS
 EQ OPER FRMN I
 25-1150 P9511
 WG51 PFT LL

WILLOW 1 AIRPORT
 EQ OPER JNY III/LD
 25-1100 P9511
 WG52 PFT LL

EQ OPER JNY II P9511
 WG53 PFT LL
 25-1110
 25-1111
 25-1112

EQ OPER JNY II P9511
 WG53 PFT LL
 25-1050
 25-1107
 25-1108
 25-3649

EQ OP JNY III LD P9511
 25-1055 WG52 PFT LL

EQ OPER JRNY II P9511 LL
 WG53 PFT

25-0985	25-1057
25-1037	25-1105
25-1047	25-1129
25-1048	25-1165
25-1052	25-1166
25-1053	25-3773
25-1056	25-3774

EQ OPER JRNY I P9511 LL
 WG58 NP

25-N09025	25-N09027
25-N09026	25-N09028

TALKEETNA 1 AIRPORT
 EQ OPER JNY III/LD
 25-1143 P9511
 WG52 PFT LL

EQ OPER JNY II P9511
 25-1106 WG53 PFT LL

EQ OPER JNY II P9511 LL
 WG53 PFT

25-1101
25-1103
25-1167
25-3052

NOTE: ALL POSITIONS LOCATED IN PALMER EXCEPT WHERE NOTED.

PENINSULA DISTRICT

MAINTENANCE CHIEF

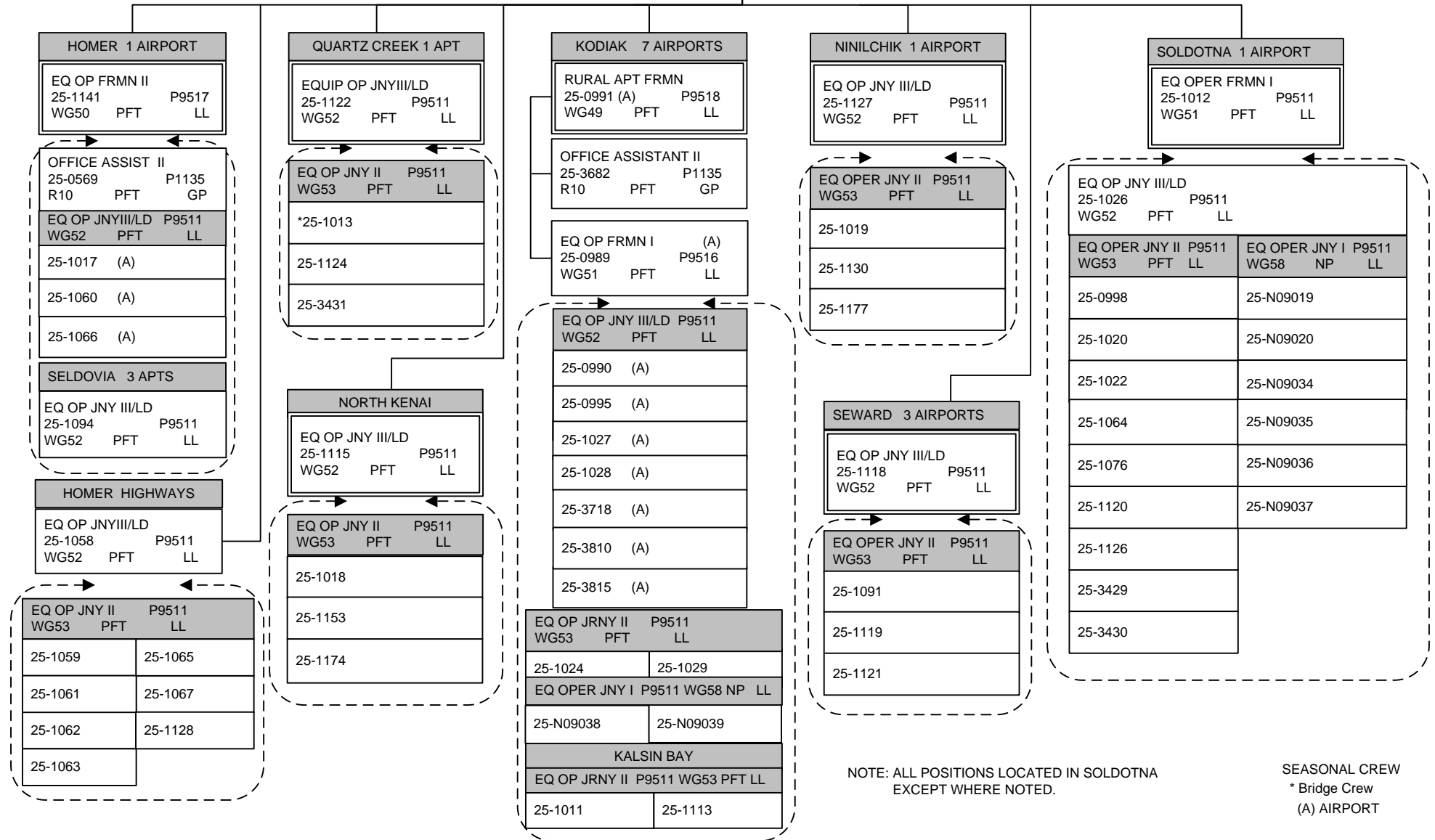
M&O SUPERINTENDENT
 25-0977 P9441
 R21 PFT SS

TOTAL POSITIONS THIS DISTRICT 68
 FULL TIME POSITIONS 60
 NON PERM POSITIONS 8

MTN SPEC ELEC JNY II P9325
 WG51 PFT LL (DISTRICTWIDE)
 25-0565
 25-1021

ACCT TECH II
 25-1010 P1211
 R14 PFT GG

OFFICE ASSISTANT II
 25-0983 P1135
 R10 PFT GP



NOTE: ALL POSITIONS LOCATED IN SOLDOTNA EXCEPT WHERE NOTED.

SEASONAL CREW
 * Bridge Crew
 (A) AIRPORT

MAINTENANCE CHIEF

SOUTHWEST DISTRICT

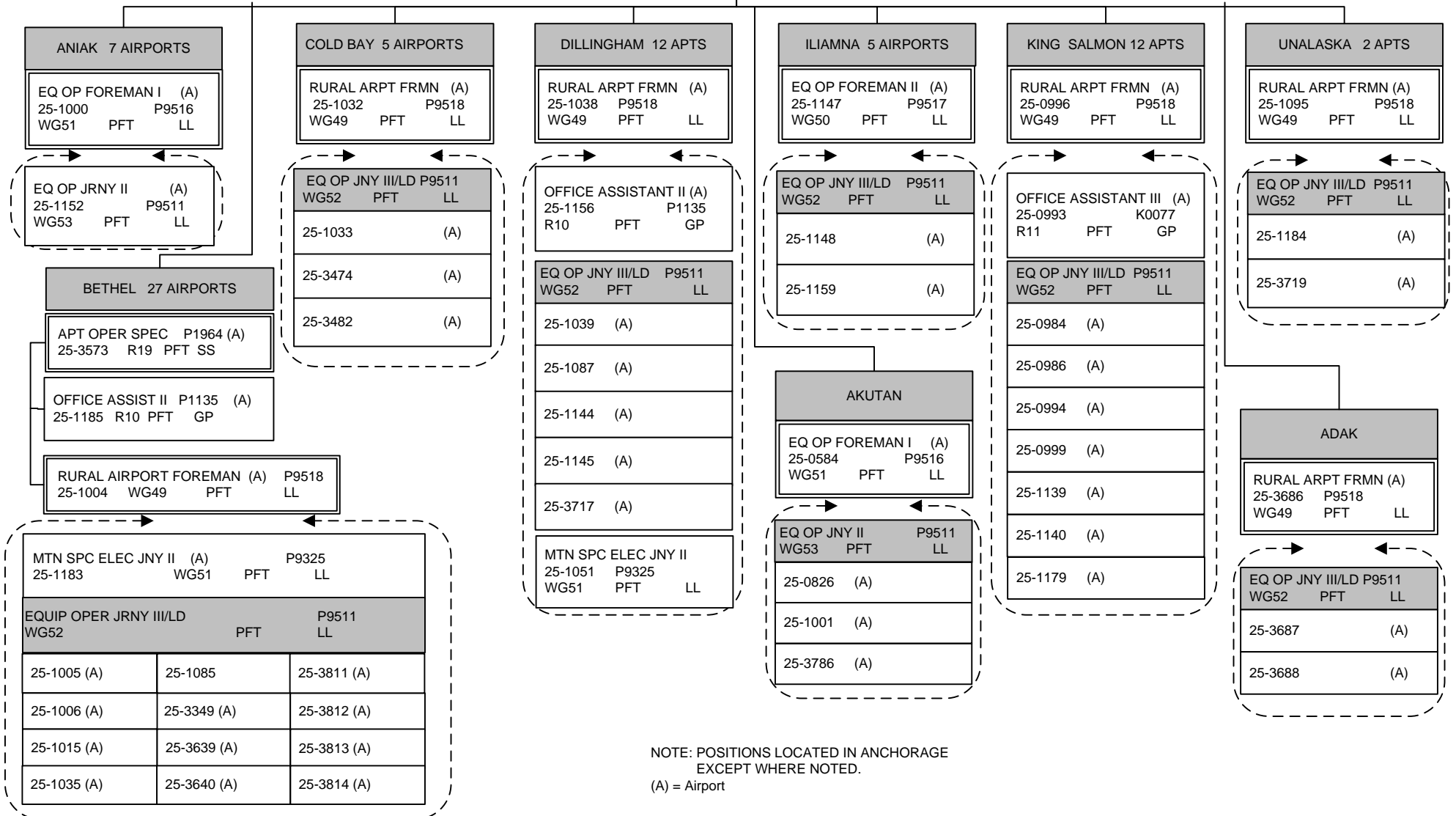
FY2014 GOVERNOR'S OPERATING BUDGET
RDU: HIGHWAYS & AVIATION
COMPONENT: CENTRAL REGION HIGHWAYS & AVIATION (564)

M&O SUPERINTENDENT
25-0974 P9441
R21 PFT SS

ADMIN ASSISTANT II
25-1169 K0018
R14 PFT GP

OFFICE ASSISTANT II
25-1031 P1135
R10 PFT GP

TOTAL POSITIONS THIS DISTRICT 55
FULL TIME POSITIONS 55



NOTE: POSITIONS LOCATED IN ANCHORAGE
EXCEPT WHERE NOTED.
(A) = Airport