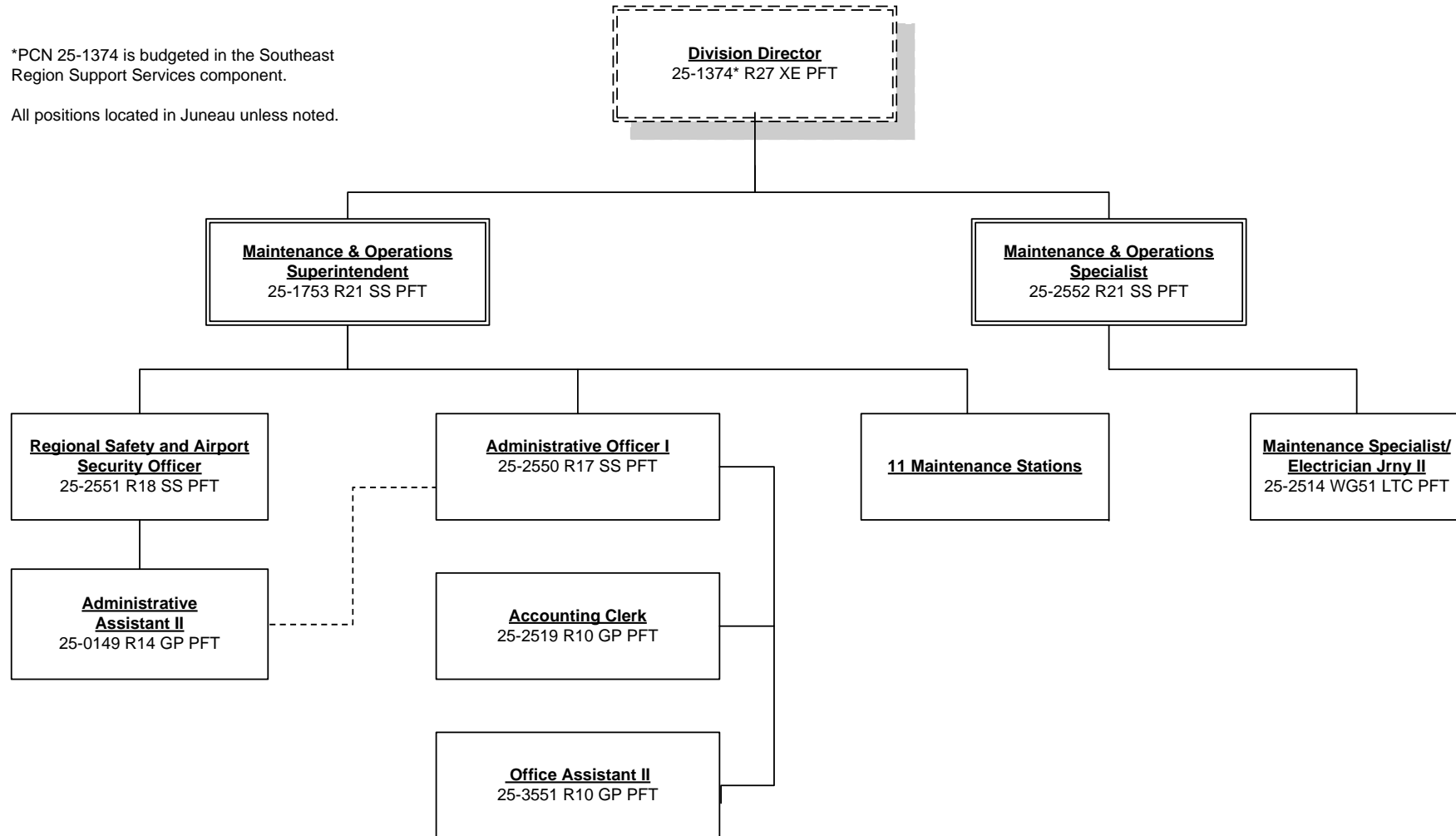


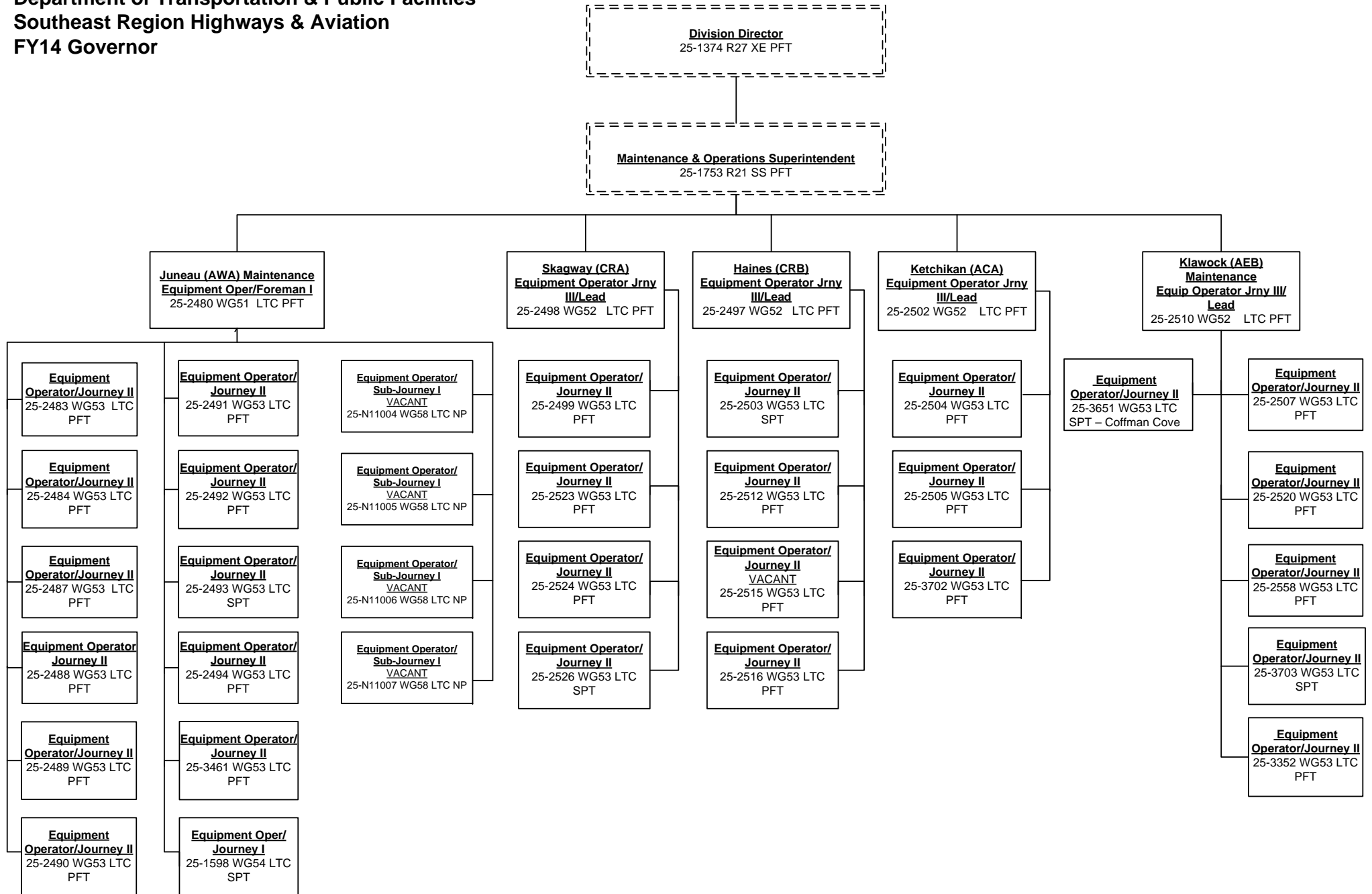
**Department of Transportation & Public Facilities  
 Southeast Region Highways & Aviation  
 FY14 Governor**

\*PCN 25-1374 is budgeted in the Southeast Region Support Services component.

All positions located in Juneau unless noted.



**Department of Transportation & Public Facilities**  
**Southeast Region Highways & Aviation**  
**FY14 Governor**



**Department of Transportation & Public Facilities**  
**Southeast Region Highways & Aviation**  
**FY14 Governor**

**Division Director**  
 25-1374 R27 XE PFT

**Maintenance & Operations  
 Superintendent**  
 25-1753 R21 SS PFT

