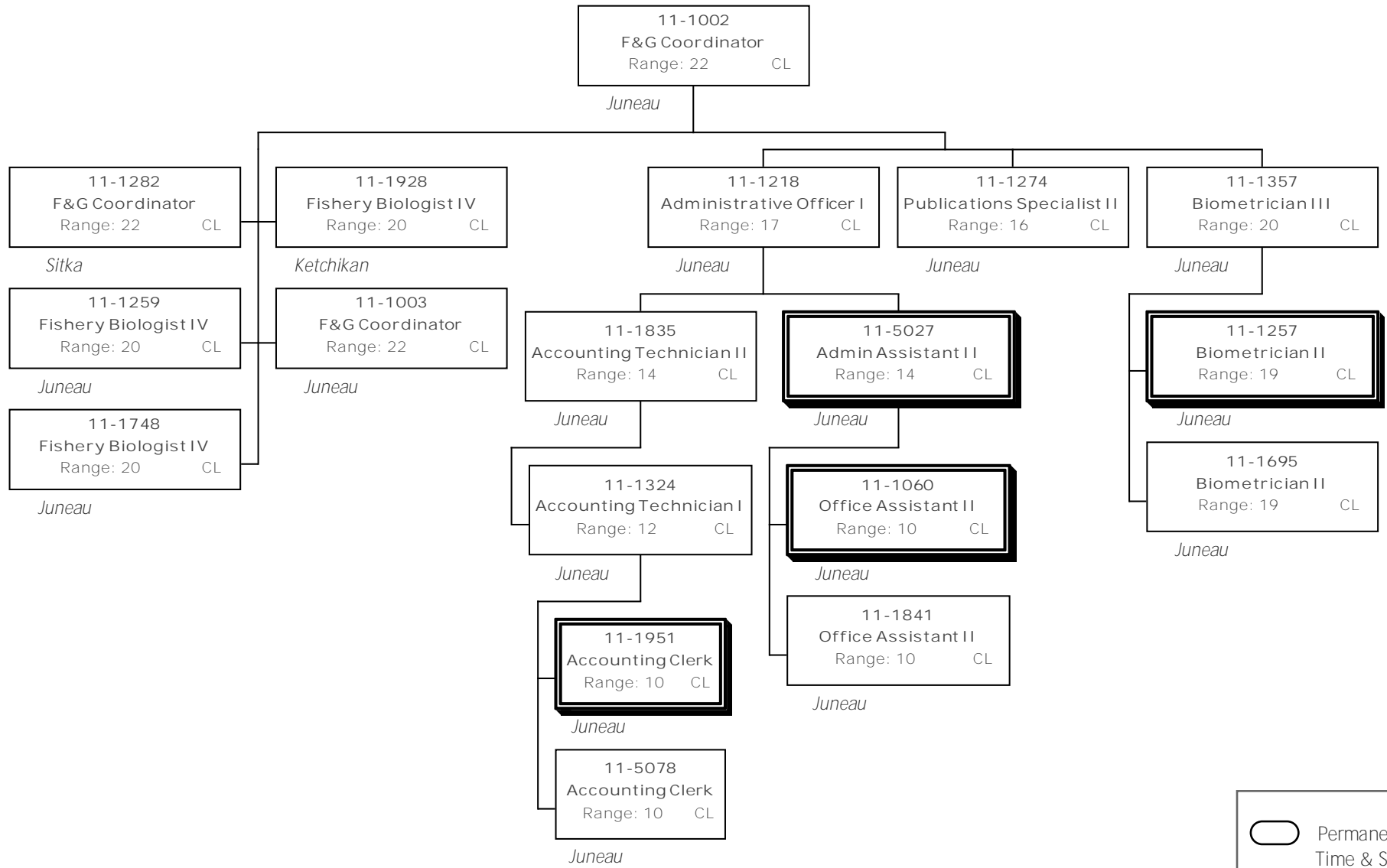
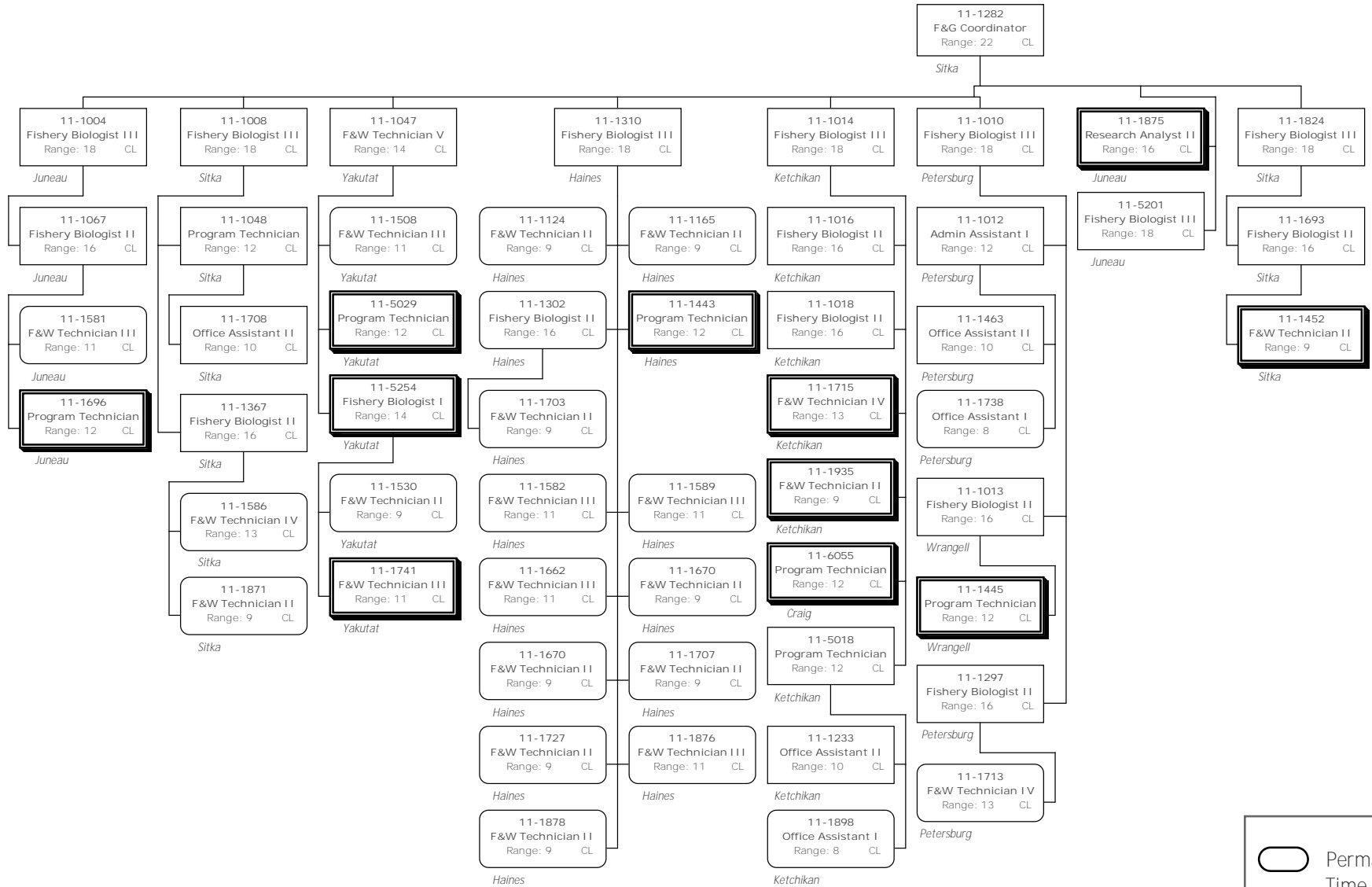





Division of Commercial Fisheries
 2167 - Southeast Fisheries Management Component
 FY2015 Governor's Request

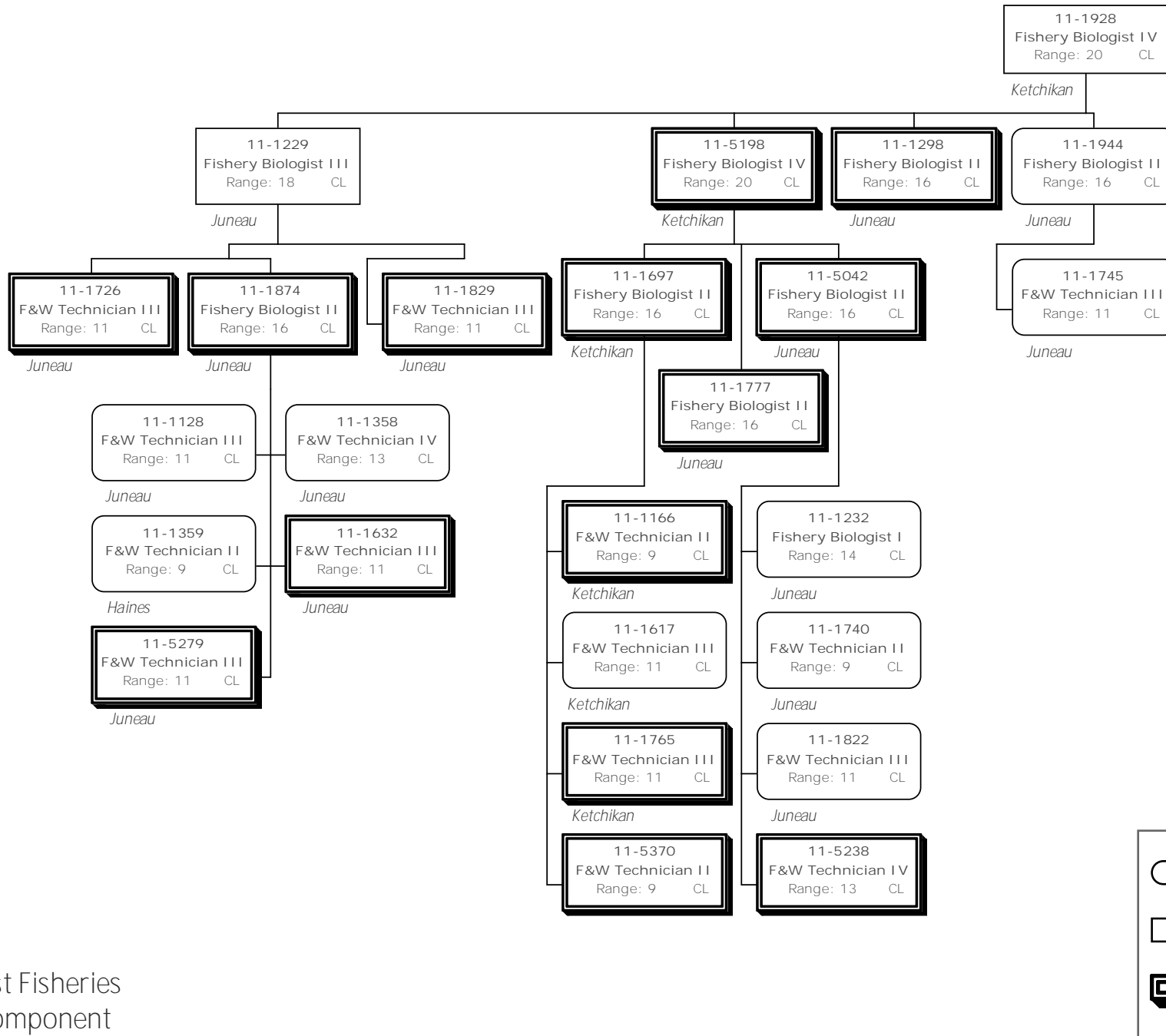


Division of Commercial Fisheries
 2167 - Southeast Fisheries Management Component
 FY2015 Governor's Request

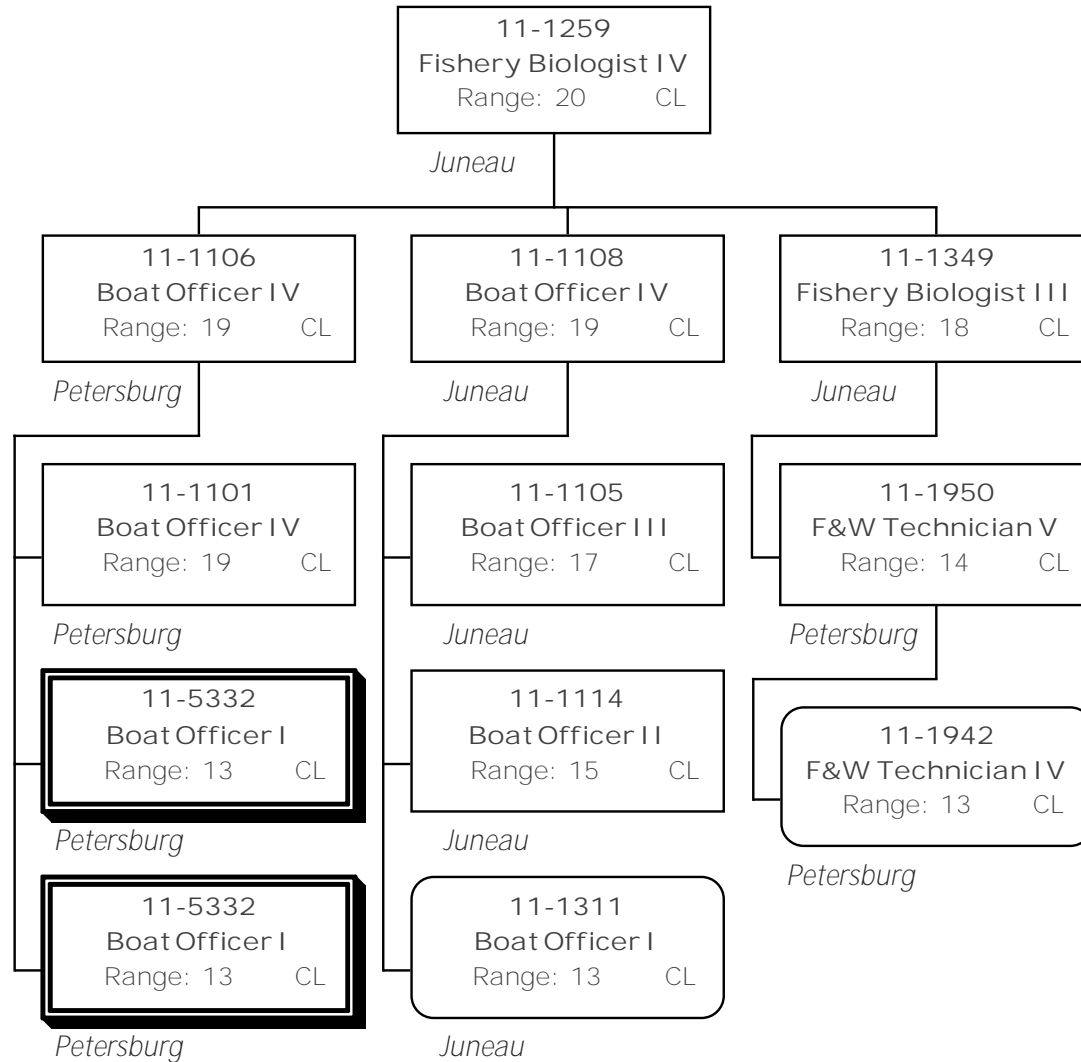


-  Permanent Part-Time & Seasonal
-  Permanent Full-time
-  Special Projects

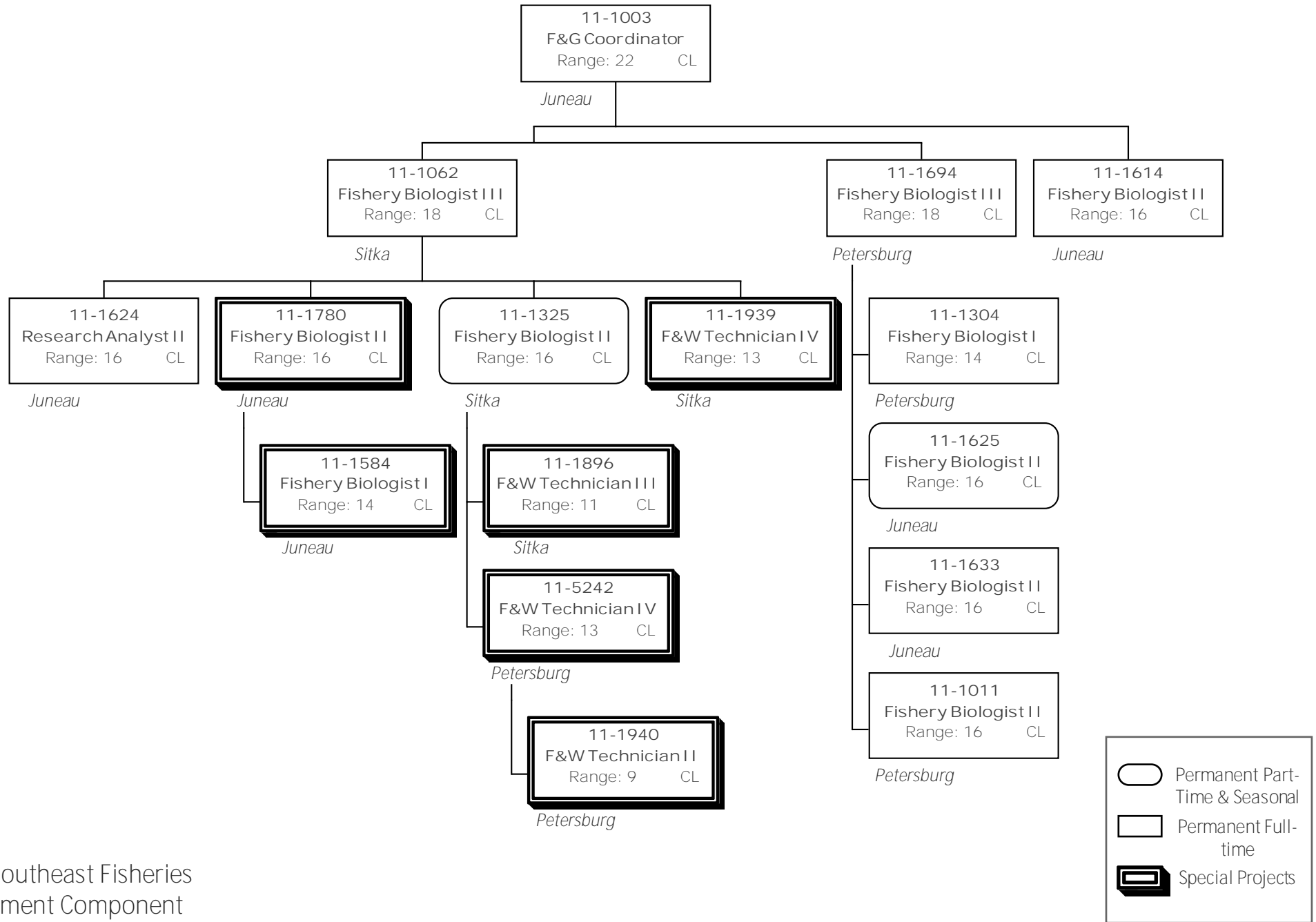
Division of Commercial Fisheries
 2167 - Southeast Fisheries Management Component
 FY2015 Governor's Request



Division of Commercial Fisheries
 2167 - Southeast Fisheries Management Component
 FY2015 Governor's Request



Division of Commercial Fisheries
 2167 - Southeast Fisheries Management Component
 FY2015 Governor's Request



Division of Commercial Fisheries
 2167 - Southeast Fisheries Management Component
 FY2015 Governor's Request

