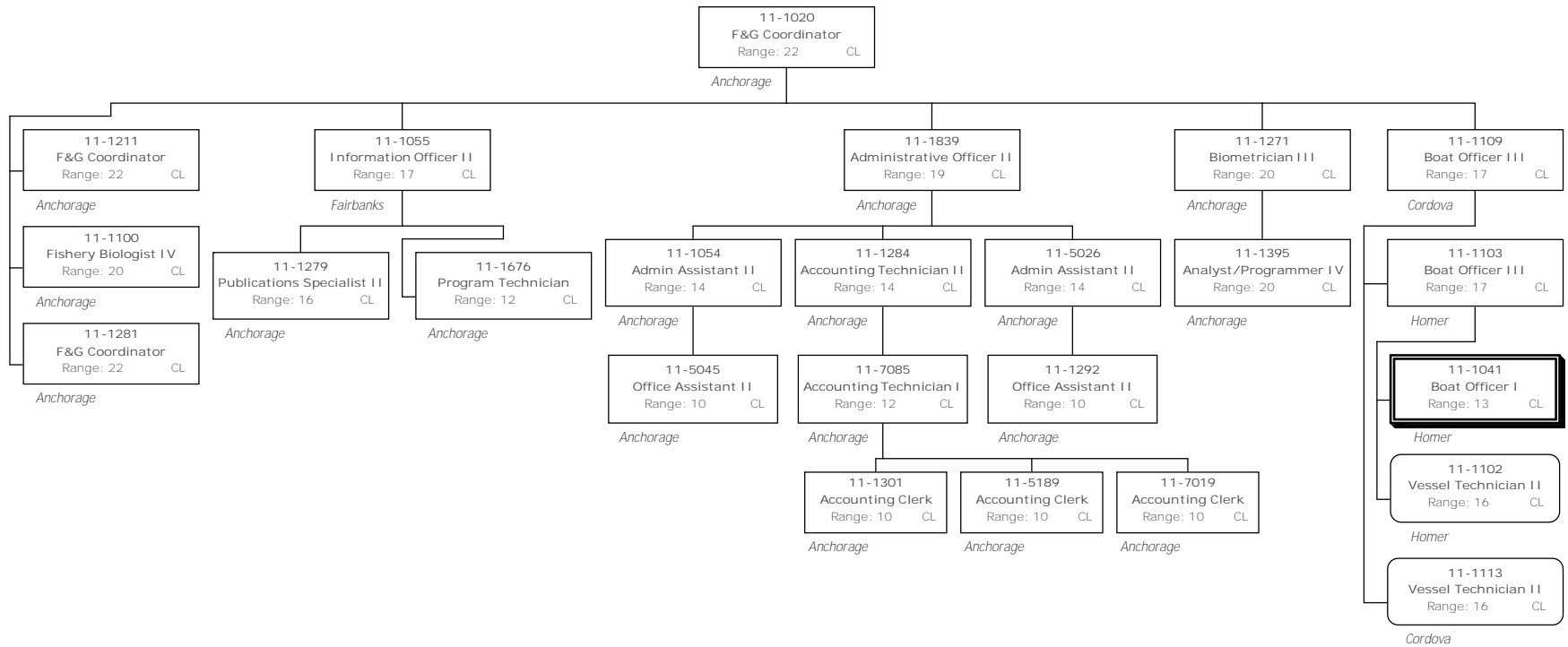
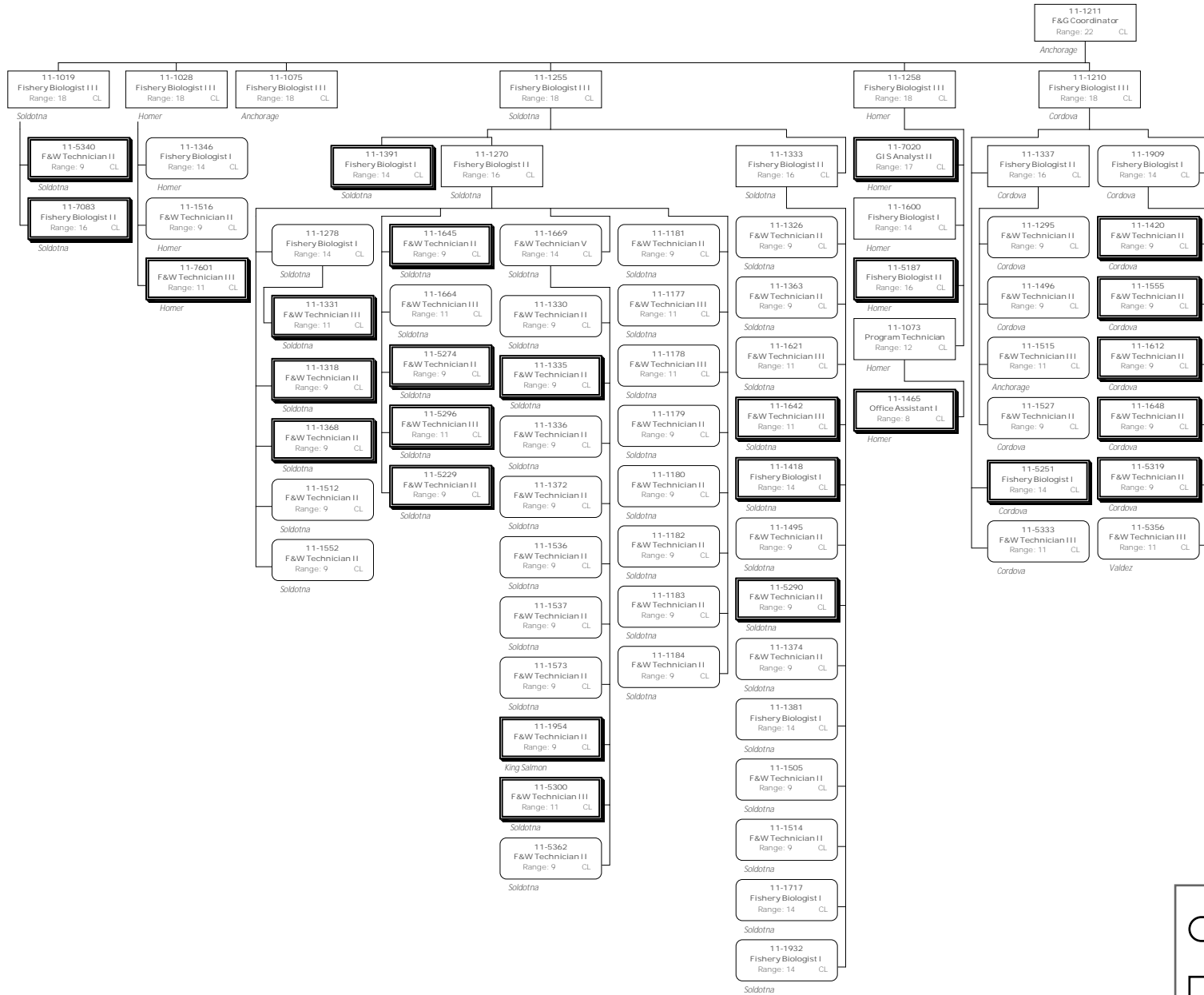




Division of Commercial Fisheries
 2168 - Central Region Fisheries Management Component
 FY2015 Governor's Request

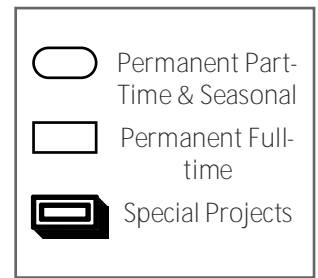
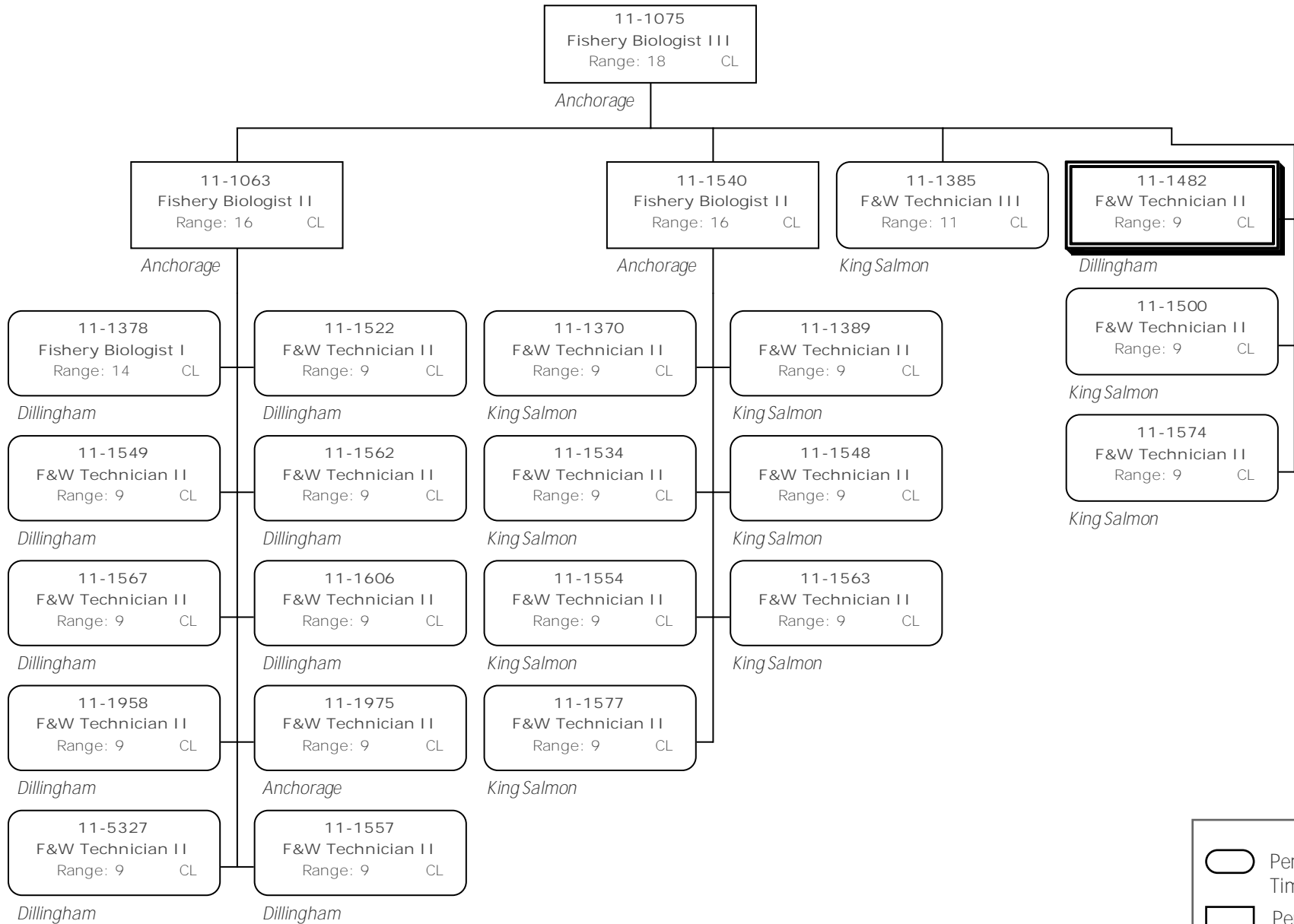


Division of Commercial Fisheries
 2168 - Central Region Fisheries Management Component
 FY2015 Governor's Request

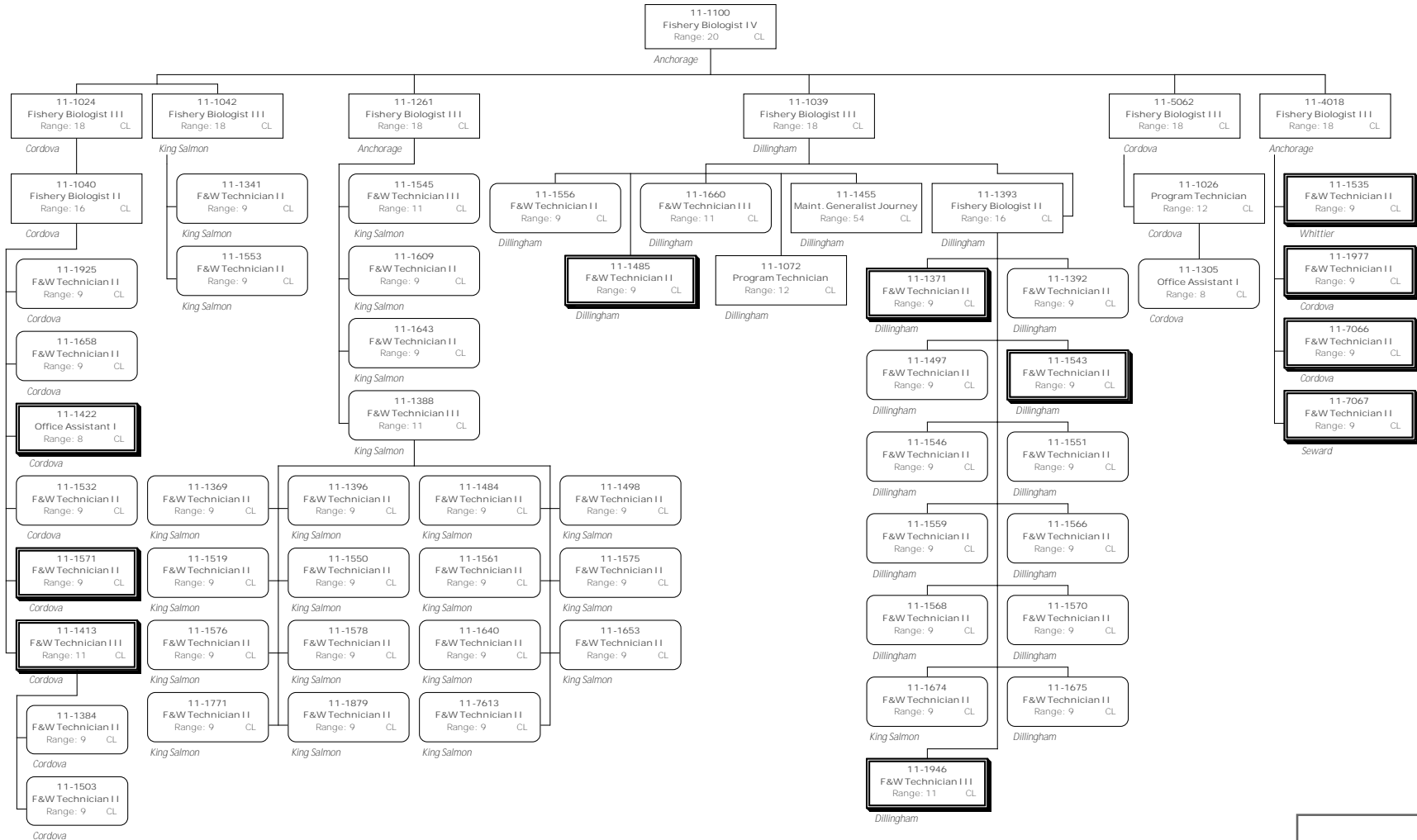


-  Permanent Part-Time & Seasonal
-  Permanent Full-time
-  Special Projects

Division of Commercial Fisheries
 2168 - Central Region Fisheries Management Component
 FY2015 Governor's Request



Division of Commercial Fisheries
 2168 - Central Region Fisheries Management Component
 FY2015 Governor's Request



	Permanent Part-Time & Seasonal
	Permanent Full-time
	Special Projects

Division of Commercial Fisheries
 2168 - Central Region Fisheries Management Component
 FY2015 Governor's Request

