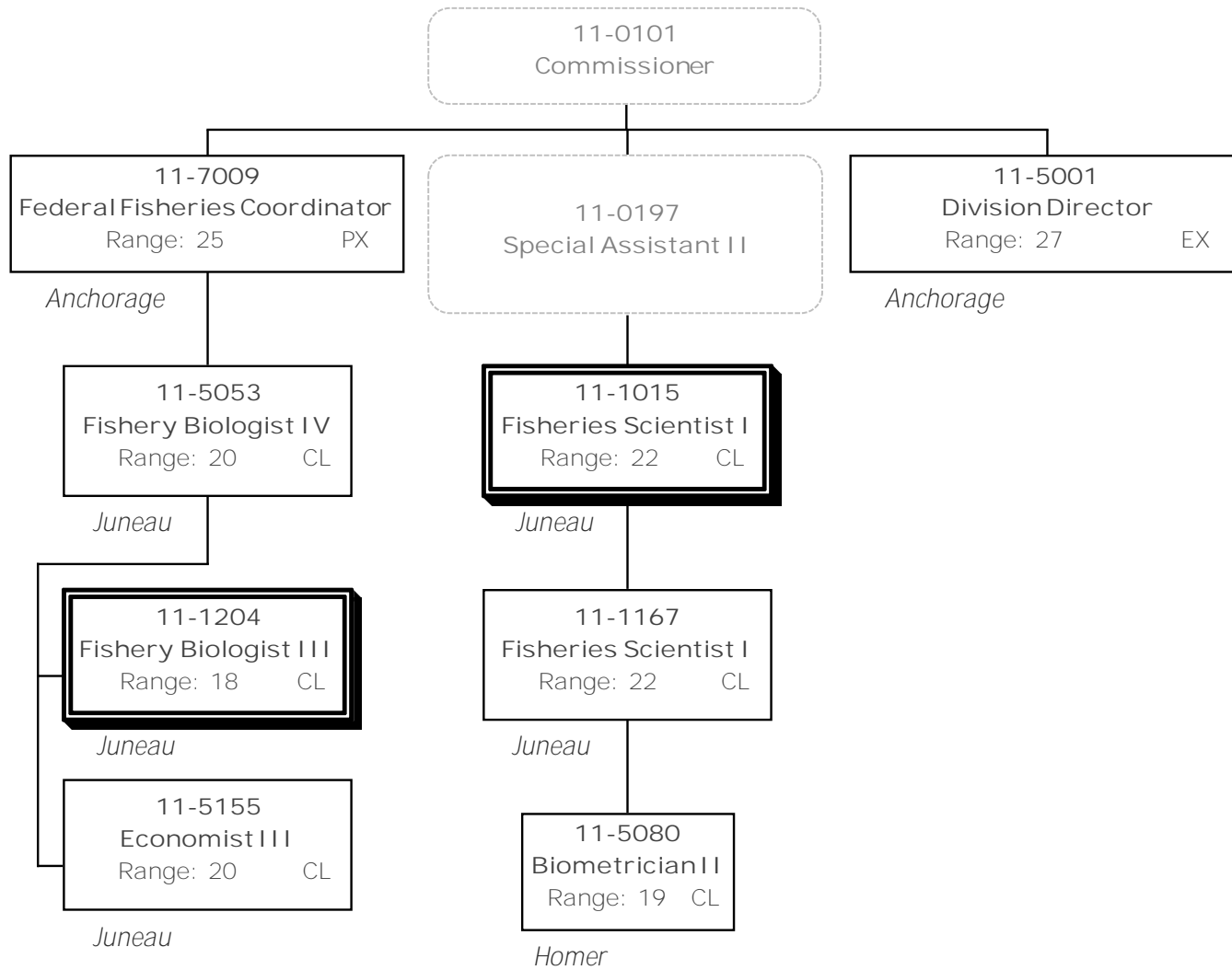
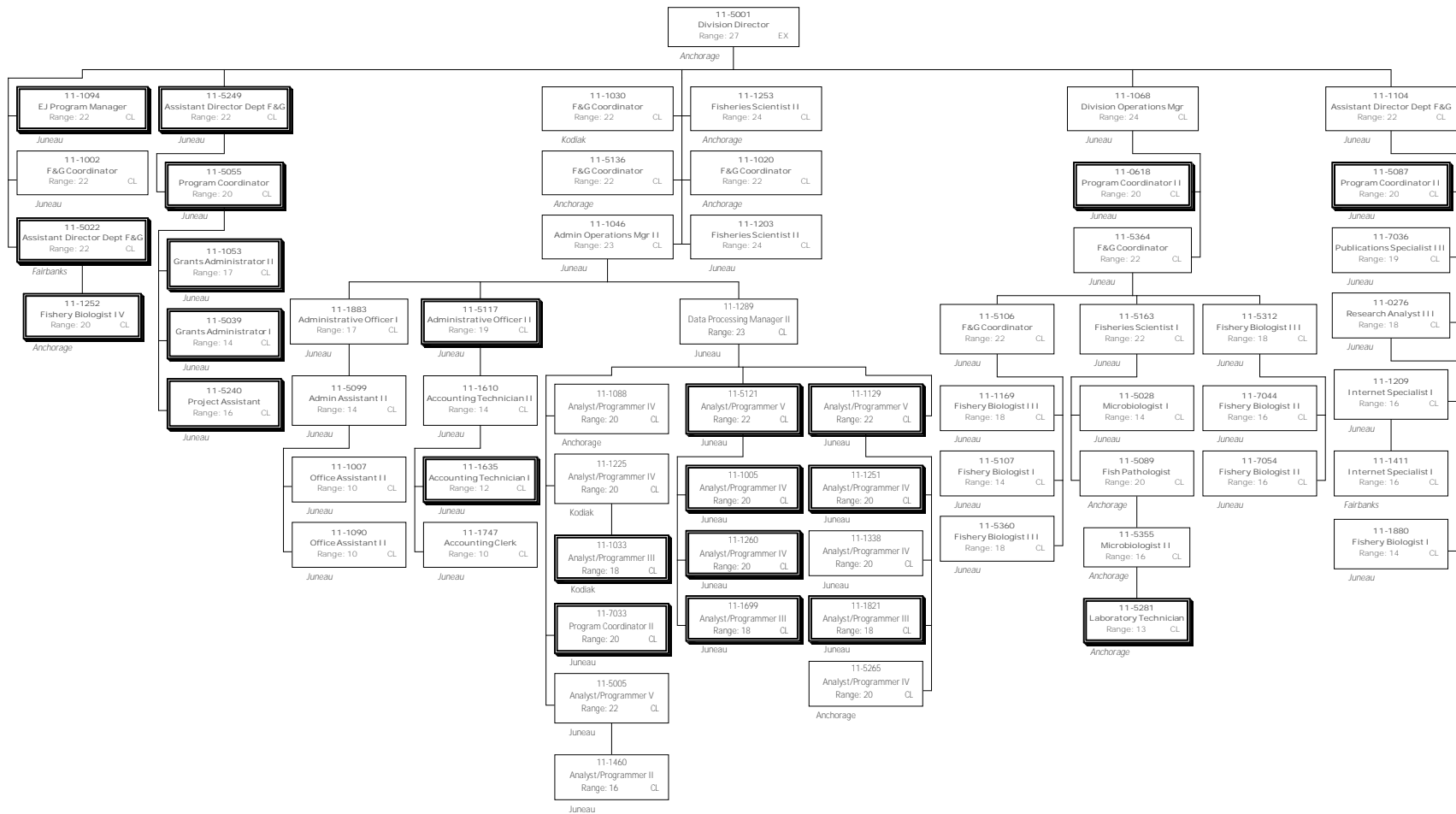





Division of Commercial Fisheries
 2171 Headquarters Fisheries Management Component
 FY2015 Governor's Request

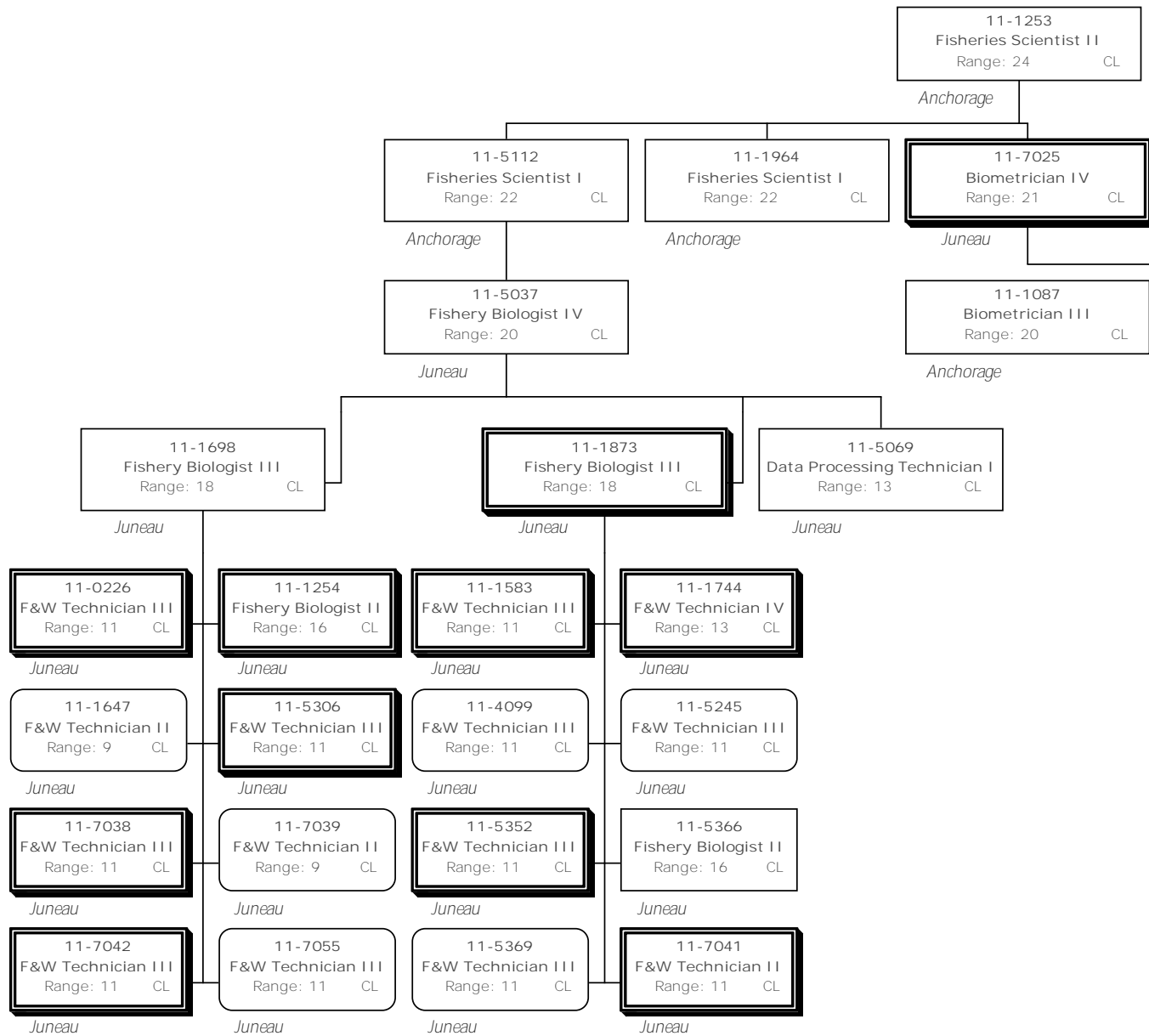


Division of Commercial Fisheries
 2171 Headquarters Fisheries Management Component
 FY2015 Governor's Request

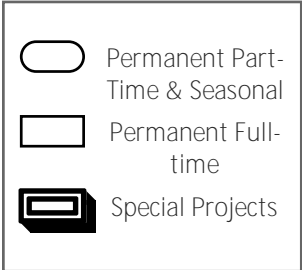
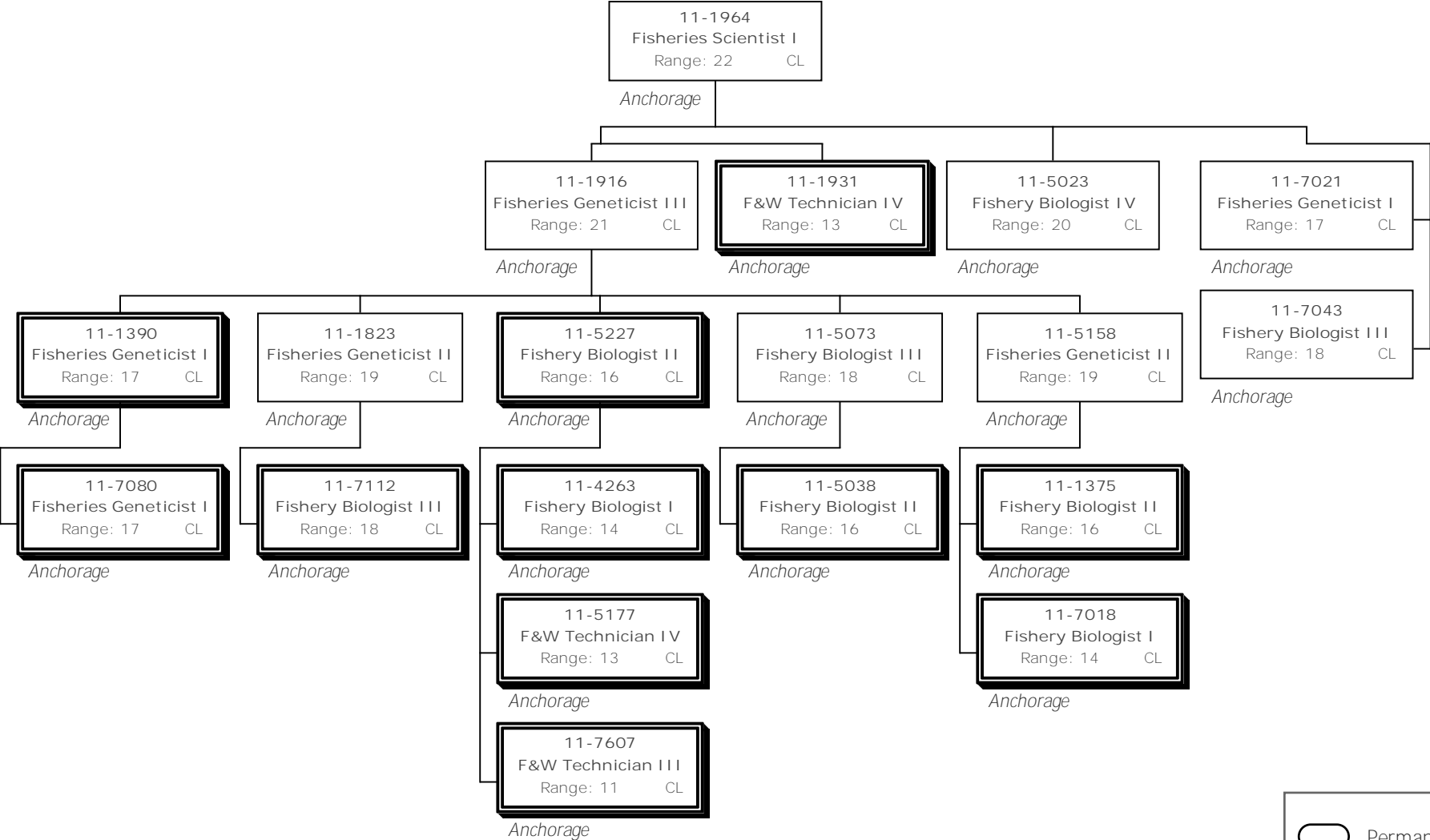


| | |
|---|--------------------------------|
|  | Permanent Part-Time & Seasonal |
|  | Permanent Full-time |
|  | Special Projects |

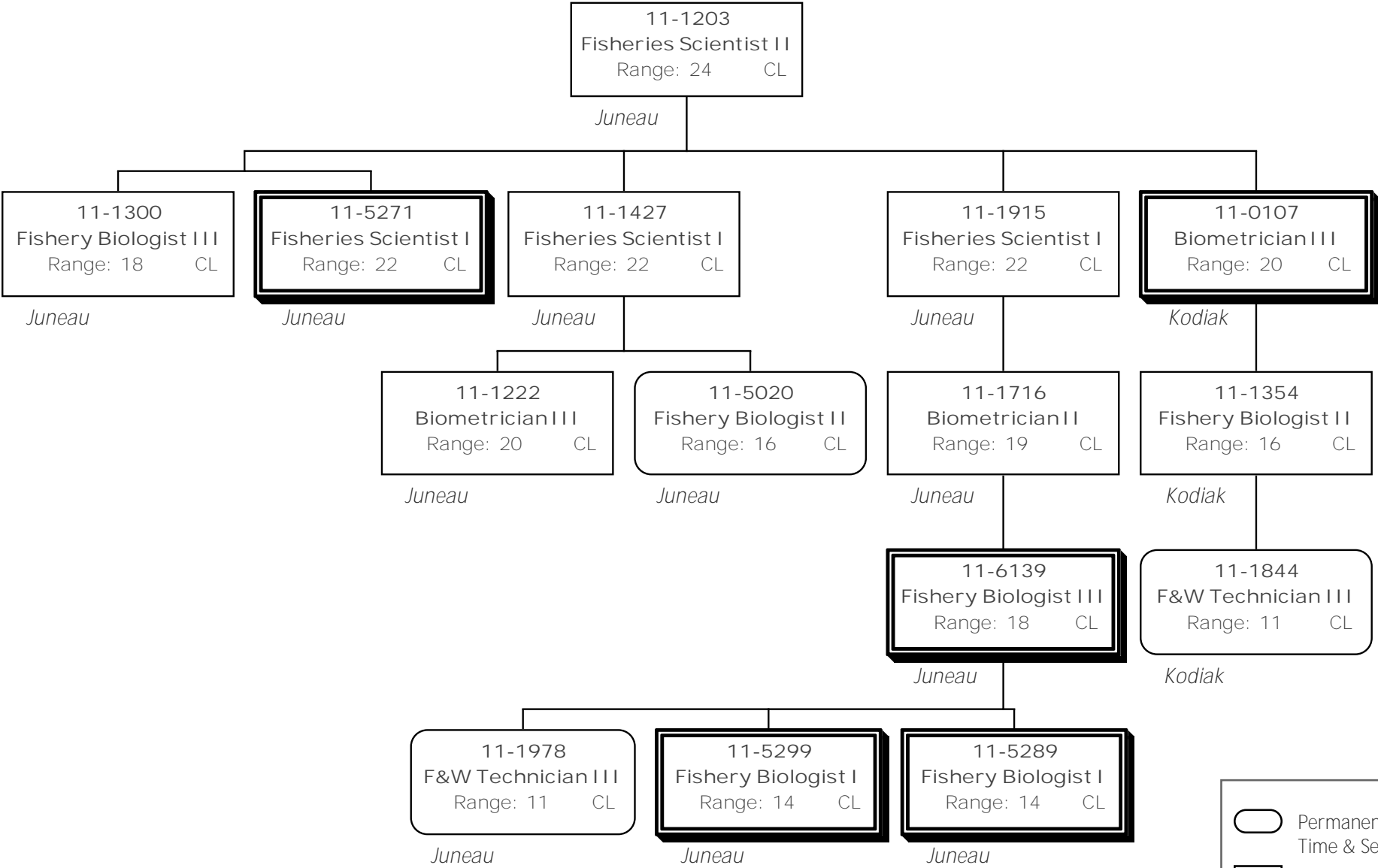
Division of Commercial Fisheries
 2171 - Headquarters Fisheries Management Component
 FY2015 Governor's Request



Division of Commercial Fisheries
 2171 - Headquarters Fisheries Management Component
 FY2015 Governor's Request



Division of Commercial Fisheries
 2171 - Headquarters Fisheries Management Component
 FY2015 Governor's Request



| | |
|--|--------------------------------|
| | Permanent Part-Time & Seasonal |
| | Permanent Full-time |
| | Special Projects |