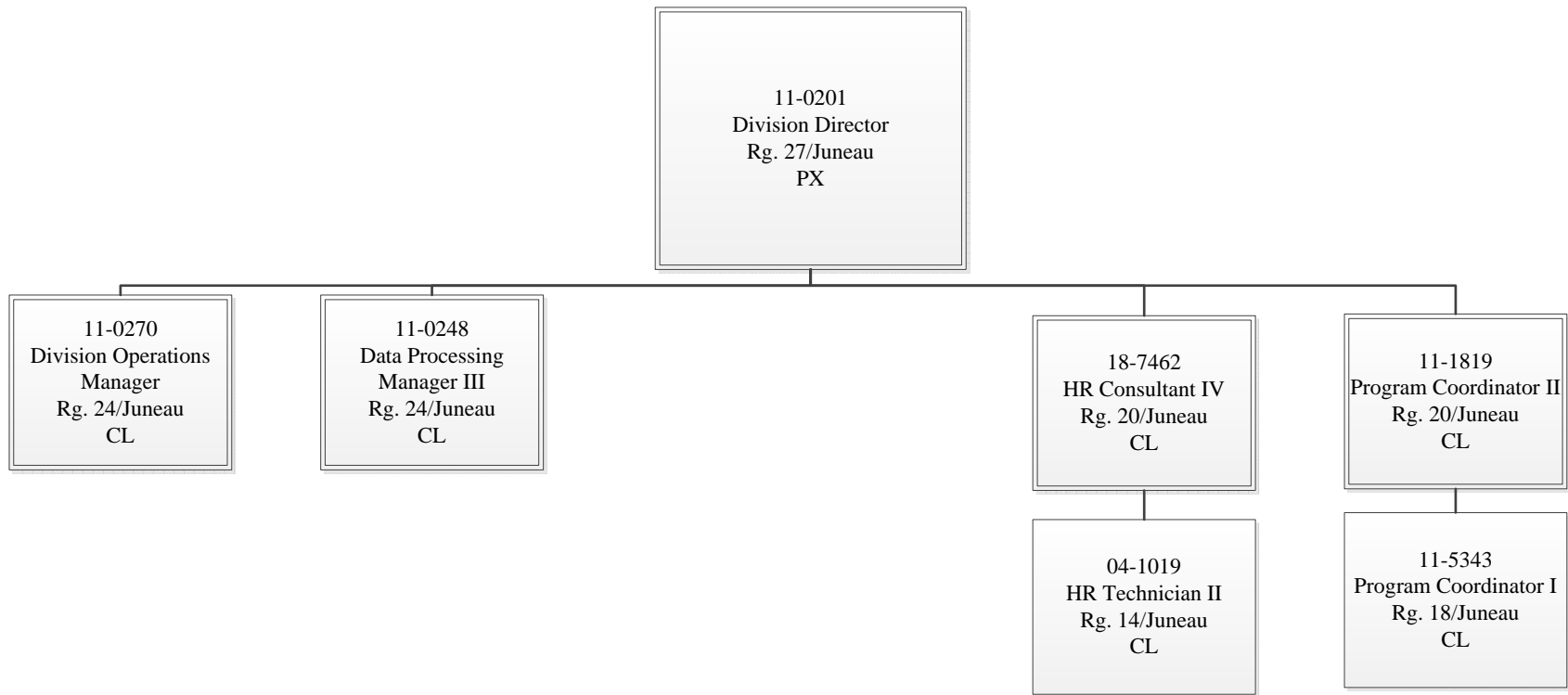


FY 15 Budget
Alaska Department of Fish and Game
RDU: Administration and Support
Component: 479 - Administrative Services



11-0270
Division Operations Manager
Rg. 24/Juneau
CL

11-1084
Budget Analyst III
Rg. 19/Juneau
CL

11-0286
Accountant V
Rg. 22/Juneau
CL

11-0207
Procurement Specialist V
Rg. 21/Juneau
CL

11-1722
Administrative Assistant II
Rg. 14/Juneau
CL

11-N08076
Program Coordinator I
Rg. 18/Juneau
CL

11-0208
Accountant IV
Rg. 20/Juneau
CL

11-0205
Accountant IV
Rg. 20/Juneau
CL

11-N13010
Maint. Spec. BFC
Jrny. II/Lead
Rg. 51/Juneau
CL

11-0212
Administrative Officer I
Rg. 17/Juneau
CL

11-0215
Accounting Technician III
Rg. 16/Juneau
CL

11-0243
Accounting Technician III
Rg. 16/Juneau
CL

11-0223
Office Assistant II
Rg. 10/Juneau
CL

11-0249
Office Assistant IV
Rg. 12/Juneau
CL

11-0246
Office Assistant II
Rg. 10/Juneau
CL

11-0284
Accounting Technician III
Rg. 16/Juneau
CL

11-0231
Facilities Manager I
Rg. 20/Juneau
CL

11-0297
Office Assistant II
Rg. 10/Juneau
CL

11-0219
Accounting Technician I
Rg. 12/Juneau
CL

11-7011
Accounting Technician II
Rg. 14/Juneau
CL

11-0203
Office Assistant I
Rg. 8/Juneau
CL

11-0220
Office Assistant I
Rg. 8/Juneau
CL

11-0227
Accounting Technician II
Rg. 14/Juneau
CL

11-0278
Procurement Specialist III
Rg. 18/Juneau
CL

11-1276
Accounting Clerk
Rg. 10/Douglas
CL

11-0262
Accounting Clerk
Rg. 10/Juneau
CL

11-0244
Accounting Technician I
Rg. 12/Juneau
CL

11-0239
Office Assistant I
Rg. 8/Juneau
CL

11-0240
Office Assistant I
Rg. 8/Juneau
CL

11-0265
Accountant III
Rg. 18/Juneau
CL

11-0216
Procurement Specialist II
Rg. 16/Juneau
CL

11-0213
Accounting Clerk
Rg. 10/Juneau
CL

11-0287
Accounting Clerk
Rg. 10/Juneau
CL

11-0261
Office Assistant I
Rg. 8/Juneau
CL

11-0295
Office Assistant I
Rg. 8/Juneau
CL

11-0210
Accounting Technician III
Rg. 16/Juneau
CL

11-0234
Procurement Specialist I
Rg. 14/Juneau
CL

11-IN1005
College Intern I
Rg. 8/Juneau
CL

11-0267
Office Assistant I
Rg. 8/Juneau
CL

11-0268
Office Assistant I
Rg. 8/Juneau
CL

11-0281
Accounting Technician II
Rg. 14/Juneau
CL

11-0279
Procurement Specialist II
Rg. 16/Juneau
CL

11-1949
Office Assistant I
Rg. 8/Juneau
CL

11-0269
Office Assistant I
Rg. 8/Juneau
CL

11-IN0935
College Intern II
Rg. 9/Juneau
CL

11-0245
Procurement Specialist I
Rg. 14/Juneau
CL

