

Health and Social Services
Office of Children's Services
Children's Services Management (2666)
FY2015

06-9269
Director
R27 PX
Fairbanks

06-3041
Social Services
Program Administrator
R23 CL
Anchorage

06-4502
Social Services
Program Administrator
R23 CL
Anchorage

06-4507
Protective Services
Manager II
22 CL
Fairbanks

06-9296
Protective Service
Manager II
R22 CL
Bethel

06-3421
Social Services
Program Officer
R21 CL
Anchorage

06-4505
Protective Services
Manager II
R22 CL
Juneau

06-3074
Protective Services
Manager II
R22 CL
Wasilla

06-9145
Social Services
Program Coordinator
R20 CL
Anchorage

06-9169
Social Services
Program Coordinator
R20 CL
Fairbanks

06-1351
Research Analyst III
R18 CL
Anchorage

06-3937
Social Services
Program Coordinator
R20 CL
Anchorage

06-4506
Protective Services
Manager II
R22 CL
Anchorage

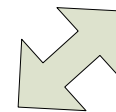
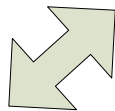
06-9168
Social Services
Program Coordinator
R20 CL
Anchorage

06-9144
Social Services
Program Coordinator
R20 CL
Anchorage

FLSW Component

FLSW Component

Count: 3 FT
10/28/2013



Health and Social Services
 Office of Children's Services
 Children's Services Management (2666)
 FY2015

069269
 Director
 R27 PX
 Fairbanks

06-0621
 Administrative Operations Manager II
 R23 CL
 Juneau

06-3944
 Social Services
 Program Coordinator
 R20 CL
 Juneau

06-1346
 Accountant III
 R18 CL
 Juneau

06-2000
 Administrative Officer II
 R19 CL
 Anchorage

06-4614
 Social Services
 Program Officer
 R21 CL
 Juneau

06-0662
 Administrative Officer II
 R19 CL
 Juneau

06-0661
 Project Assistant
 R16 CL
 Juneau

06-4609
 Accounting
 Technician III
 R16 CL
 Juneau

06-3671
 Accounting
 Technician I
 R12 CL
 Juneau

06-3707
 Accountant II
 R16 CL
 Juneau

06-3075
 Social Services
 Program
 Coordinator
 R20 CL
 Juneau

06-4616
 Medical Assistance
 Administrator I
 R16 CL
 Juneau

06-3112
 Administrative
 Assistant II
 R14 CL
 Juneau

06-0660
 Eligibility
 Technician II
 R14 CL
 Juneau

06-0641
 Accounting
 Technician I
 R12 CL
 Juneau

06-4516
 Accounting
 Technician II
 R14 CL
 Juneau

06-3396
 Program
 Coordinator I
 R18 CL
 Juneau

06-3948
 Accounting
 Technician II
 R14 CL
 Juneau

06-3028
 Office Assistant II
 R10 CL
 Juneau

06-0659
 Eligibility
 Technician II
 R14 CL
 Juneau

06-3702
 Accounting Clerk
 R10 CL
 Juneau

06-4610
 Accounting
 Technician II
 R14 CL
 Juneau

06-3704
 Social Services
 Associate II
 R12 CL
 Juneau

06-4611
 Eligibility
 Technician II
 R14 CL
 Juneau

Count: 25 FT
 10/28/2013

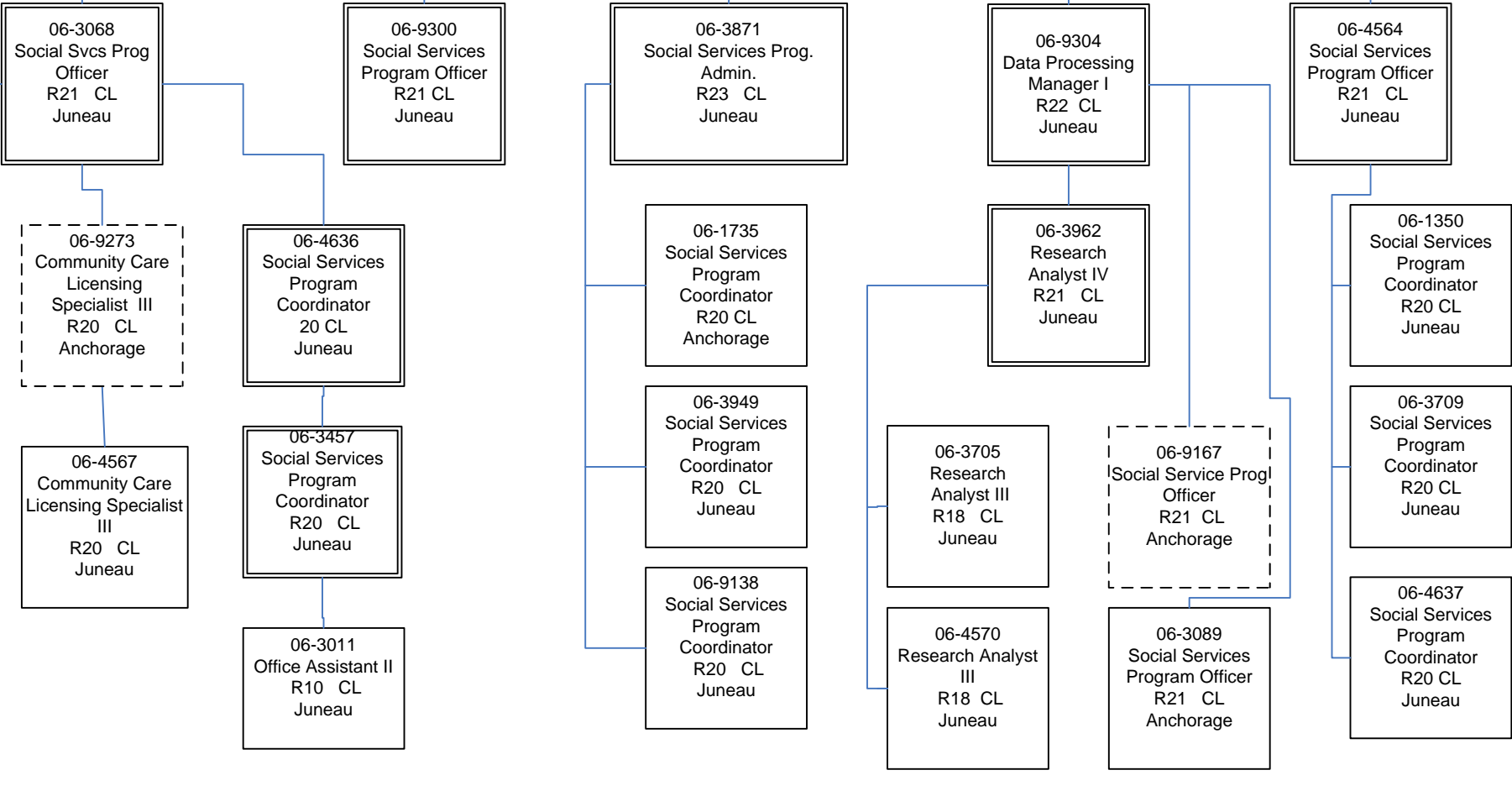
Health and Social Services
Office of Children's Services
Children's Services Management (2666)
FY2015

Resource Family Services

Program Array

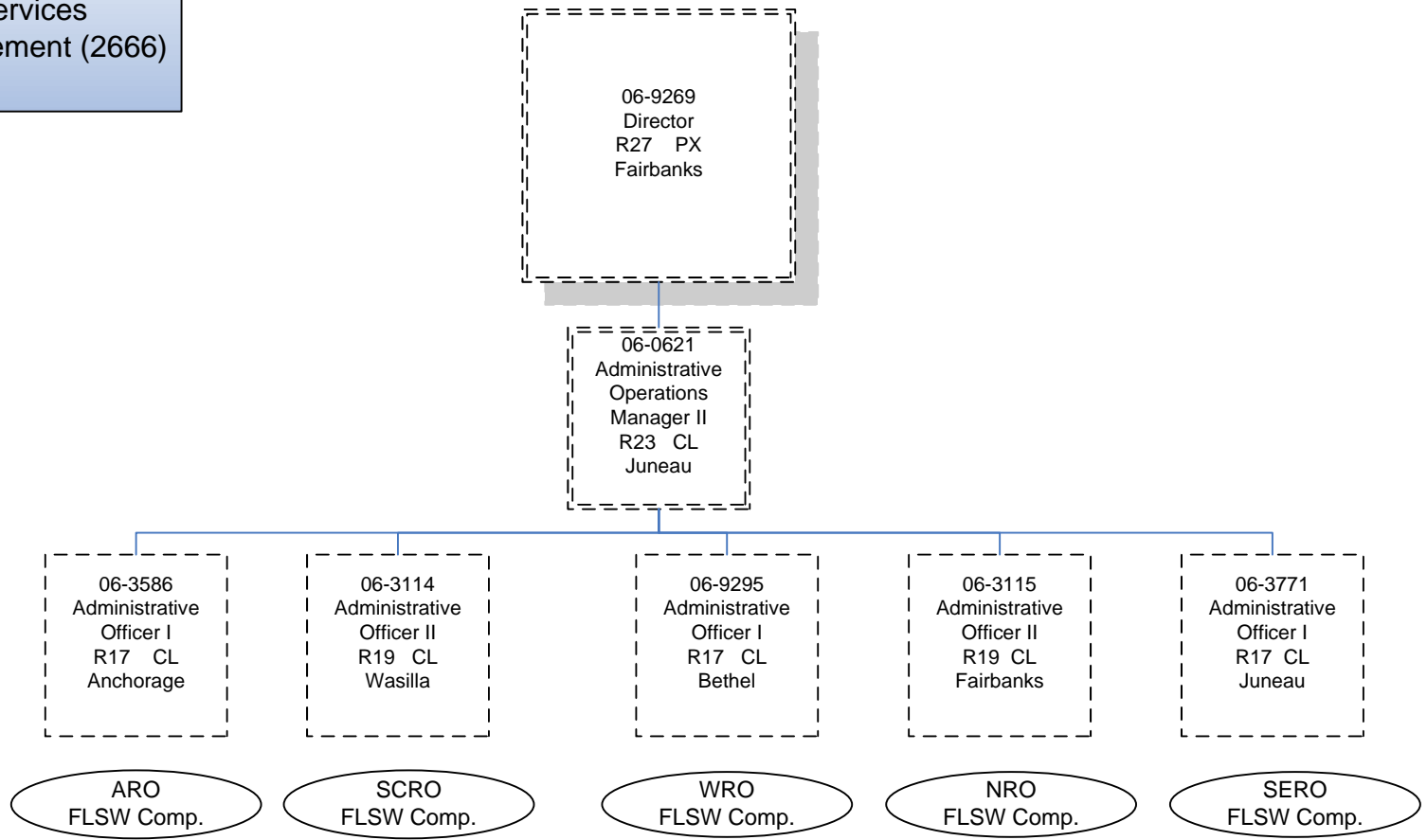
06-9269
Director
R27 XE
Fairbanks

06-9299
Deputy Director
R25 XE
Juneau



Count: 23 FT
10/28/2013

Health and Social Services
Office of Children's Services
Children's Services Management (2666)
FY2015



Count: 5 FT
10/28/2013