

Department of Health and Social Services

RDU: Public Health (502)

Component: Nursing (288)

PFT: 192 PPT: 7

Chief, Public
Health Nursing
06-1019 R-27
Anchorage CL

Administrative
Assistant II
06-1133 R-14
Anchorage CL

Office Assistant II
06-1798 R-10
Anchorage CL

Assistant Chief,
Public Health
Nursing
06-1020 R-26
Juneau CL

Public Health
Nurse V
06-1117 R-25
South Central CL

Public Health
Nurse V
06-1226 R-25
Southeast CL

Public Health
Nurse V
06-1118 R-25
Southwest CL

Public Health
Nurse V
06-1143 R-25
Interior CL

Nurse
Consultant II
06-1648 R-24
Juneau CL

Nurse
Consultant II
06-1134 R-24
Anchorage CL

Nurse
Consultant II
06-1756 R-24
Anchorage CL

Public Health
Specialist II
06-1212 R-20
Juneau CL

Administrative
Assistant II
06-1766 R-14
Juneau CL

Administrative
Officer II
06-1452 R-19
Juneau CL

Nurse
Consultant I
06-2023 R-22
Anchorage CL

Health Program
Associate
06-1373 R-16
Anchorage CL

Office Assistant II
06-1955 R-10
Juneau CL

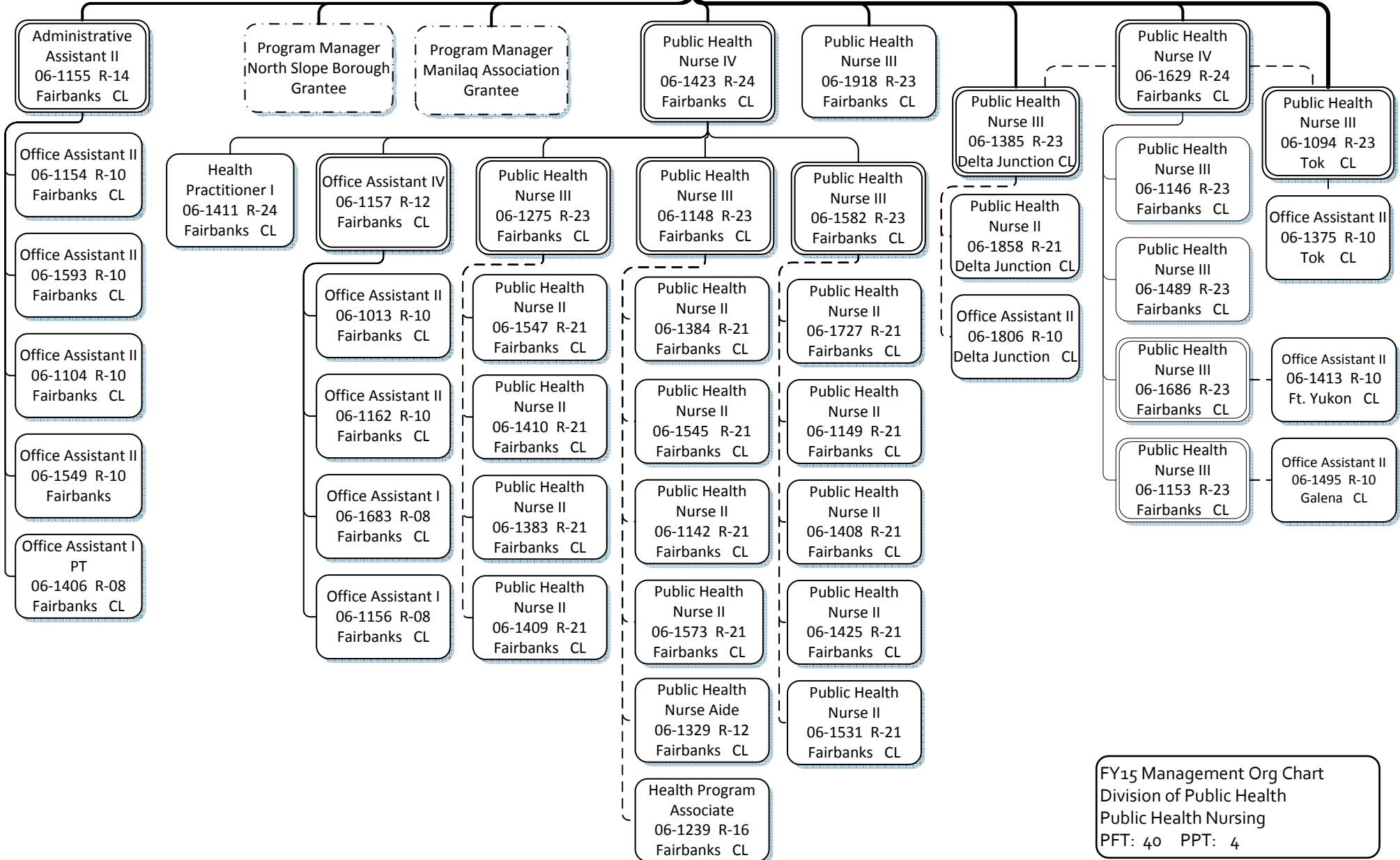
Office Assistant II
06-1907 R-10
Juneau CL

FY15 Management Org Chart
Division of Public Health
Public Health Nursing
PFT: 18 PPT: 0

Department of Health and Social Services

RDU: Public Health (502)
 Component: Nursing (288)
 PFT: 192 PPT: 7

Public Health Nurse V
 06-1143 R-25
 Fairbanks CL



FY15 Management Org Chart
 Division of Public Health
 Public Health Nursing
 PFT: 40 PPT: 4

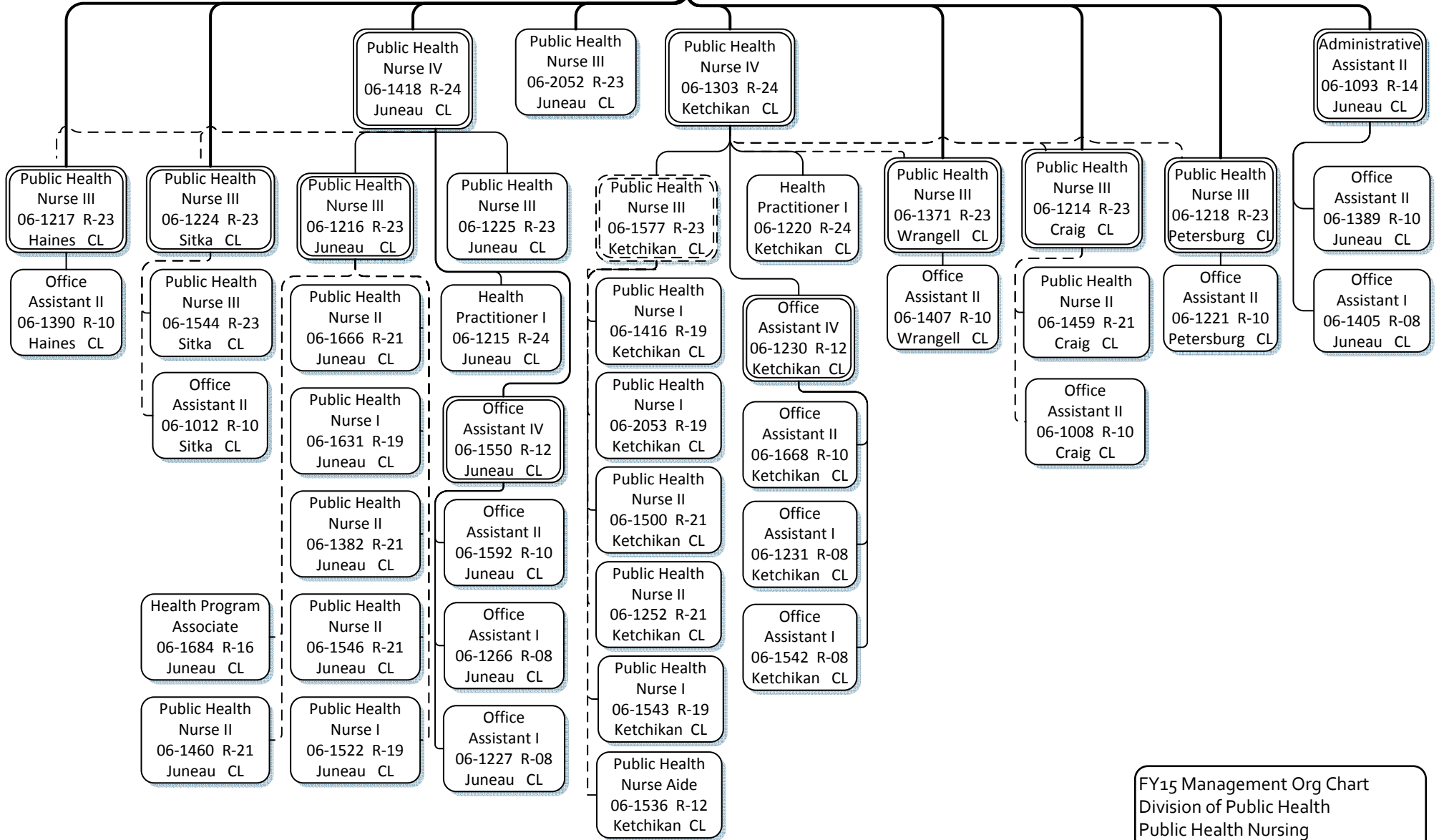
Department of Health and Social Services

RDU: Public Health (502)

Component: Nursing (288)

PFT: 192 PPT: 7

Public Health Nurse V
06-1226 R-25
Juneau CL

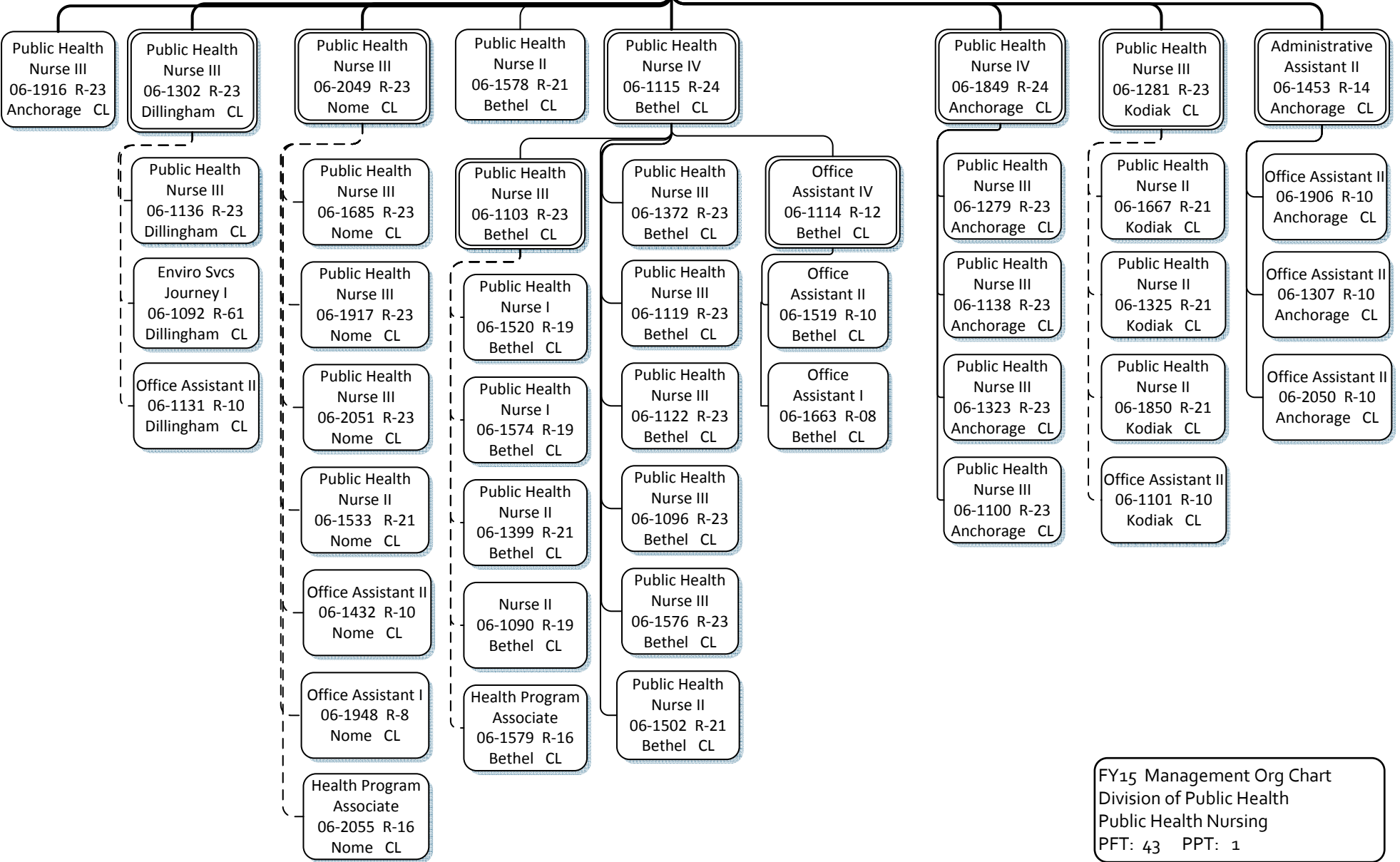


FY15 Management Org Chart
Division of Public Health
Public Health Nursing
PFT: 43 PPT: 2

Department of Health and Social Services

RDU: Public Health (502)
Component: Nursing (288)
PFT: 192 PPT: 7

Public Health Nurse V
06-1118 R-25
Anchorage CL



FY15 Management Org Chart
Division of Public Health
Public Health Nursing
PFT: 43 PPT: 1