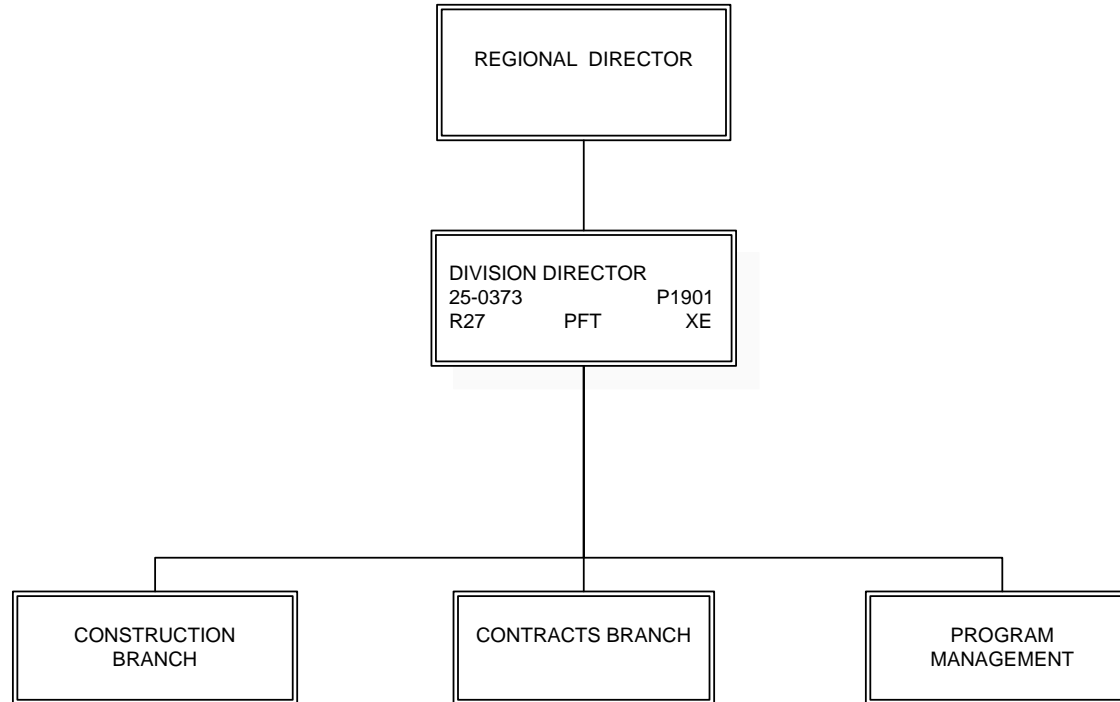


Department of Transportation & Public Facilities
RDU: Design, Engineering and Construction
COMPONENT: Central Region Construction and CIP Support (2293)
FY2015 Governor's Budget

COMPONENT TOTAL:	
FULLTIME POSITIONS:	122
PARTTIME POSITIONS:	44
NON PERM POSITIONS:	19
TOTAL	185

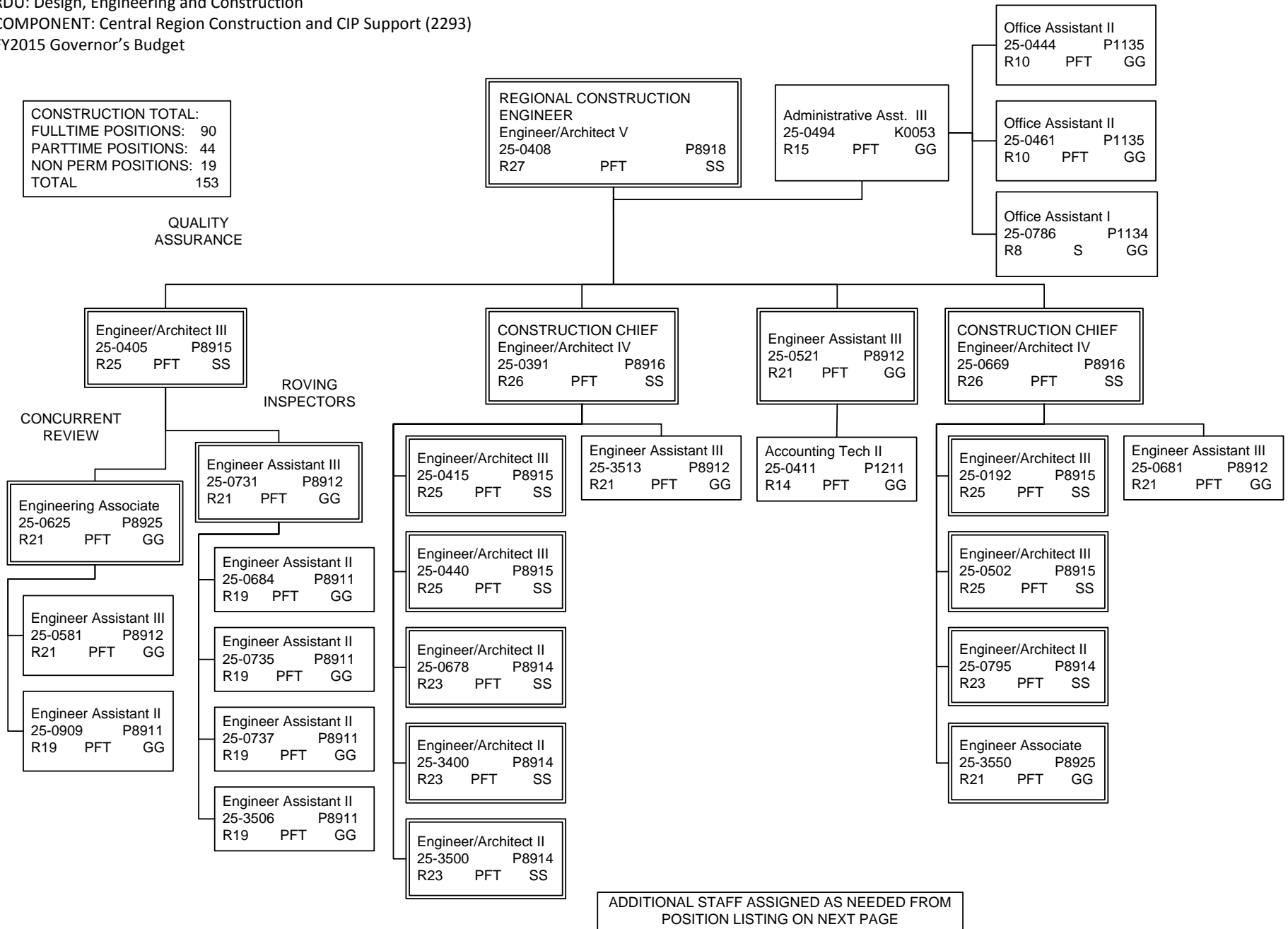
REGIONAL OFFICE TOTAL:	
FULLTIME POSITIONS:	1
PARTTIME POSITIONS:	0
NON PERM POSITIONS:	0
TOTAL	1



Note: All positions are located in Anchorage.

Department of Transportation & Public Facilities
 RDU: Design, Engineering and Construction
 COMPONENT: Central Region Construction and CIP Support (2293)
 FY2015 Governor's Budget

CONSTRUCTION TOTAL:
 FULLTIME POSITIONS: 90
 PARTTIME POSITIONS: 44
 NON PERM POSITIONS: 19
 TOTAL 153



ADDITIONAL STAFF ASSIGNED AS NEEDED FROM
 POSITION LISTING ON NEXT PAGE

Note: All positions are located in Anchorage.

POSITIONS REPORT TO ENGINEER/
 ARCHITECT POSITIONS ON PREVIOUS PAGE

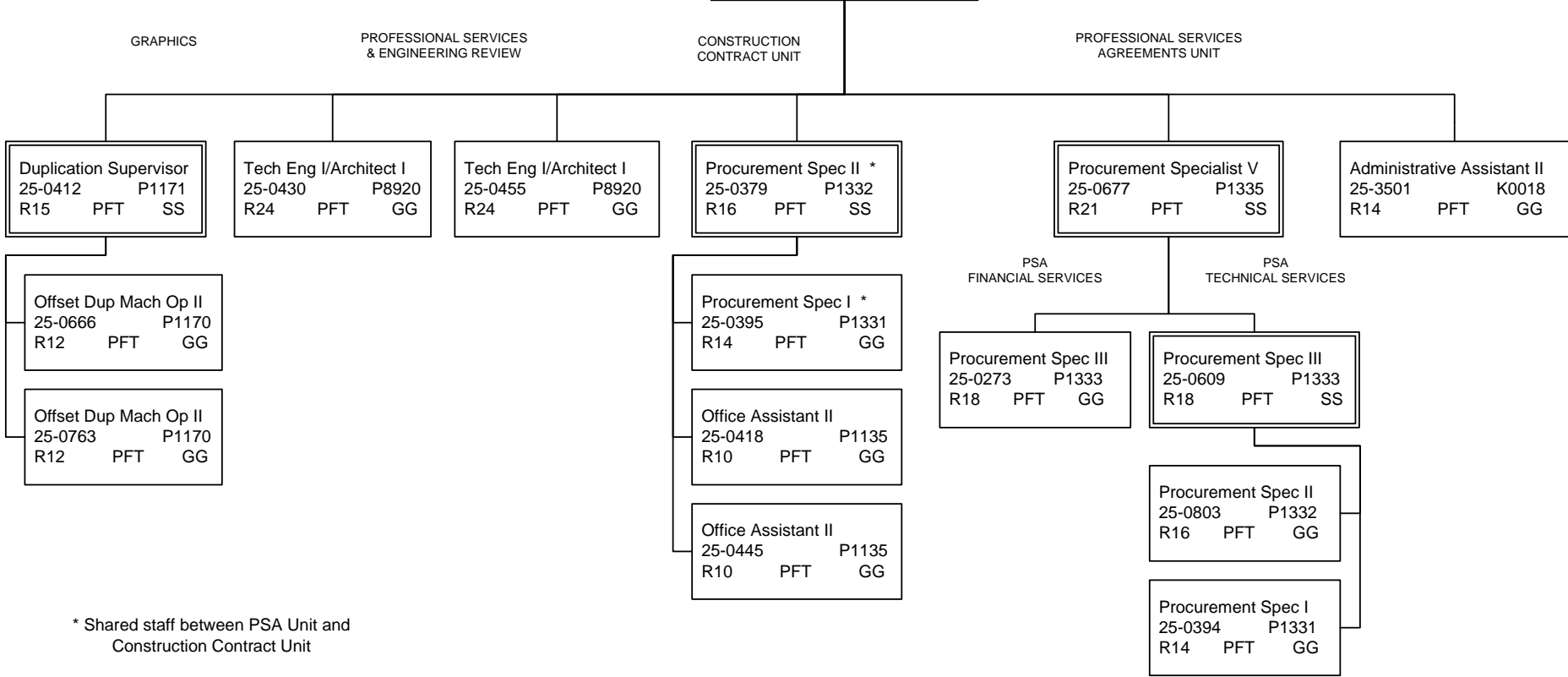
Engineering Associate R21 GG PFT P8925	Engineering Assistant III R21 GG PFT P8912	Engineering Assistant I/II (FLEX) R17/19 GG PFT P8910/P8911		Engineering Tech Journey WG54 LL PPT P9571	Engineering Tech Sub Journey III WG55 LL PPT P9571	Engineering Tech Sub Journey II WG57 LL PPT P9571	Engineering Tech Sub Journey I/II - Interns WG57/59 LL NP P9571
25-0506 25-0509 25-0514 25-0518 25-0758 25-0796	25-0446 25-0465 25-0510 25-0512 25-0513 25-0579 25-0648 25-0674 25-0688 25-0694 25-0759 25-0799 25-3399 25-3514 25-3515	25-0403 25-0516 25-0517 25-0519 25-0520 25-0522 25-0523 25-0524 25-0525 25-0526 25-0527 25-0528 25-0532 25-0533 25-0534 25-0535 25-0536 25-0641 25-0642 25-0650	25-0654 25-0693 25-0696 25-0701 25-0760 25-0767 25-0804 25-0807 25-0809 25-0811 25-0814 25-0815 25-0822 25-3503 25-3504 25-3505 25-3507 25-3508 25-3509	25-0539(S) 25-0540(S) 25-0542(S) 25-0552(S) 25-0554(S) 25-0555(S) 25-0560(S) 25-0563(S) 25-0564(S) 25-0828(S) 25-0832(S) 25-0833(S) Soldotna 25-0553(S) Wasilla 25-0559(S) 25-0829(S)	25-0562(S) 25-0570(S) 25-0571(S) 25-0574(S) 25-0577(S) 25-0604(S) 25-0606(S) 25-0836(S) Wasilla 25-0572(S) Dillingham 25-0896(S)	25-0547(S) 25-0548(S) 25-0586(S) 25-0587(S) 25-0592(S) 25-0593(S) 25-0601(S) 25-0868(S) 25-0870(S) 25-0875(S) 25-0907(S) 25-0940(S) 25-0956(S) Wasilla 25-0591(S) 25-0594(S) 25-0595(S) Homer 25-0877(S) Soldotna 25-0957(S)	25IN0916 25IN0917 25IN0918 25IN0919 25IN0920 25IN0921 25IN0922 25IN0923 25IN0924 25IN0925 Engineering Tech Sub Journey I WG59 LL NP 9571 25N09085 25N09088 25N09089 25N09090 25N09091 King Cove 25N09087 Kodiak 25N09023 Wasilla 25N09022 25N09024

Note: All positions are located in Anchorage except where noted.

Department of Transportation & Public Facilities
 RDU: Design, Engineering and Construction
 COMPONENT: Central Region Construction and CIP Support (2293)
 FY2015 Governor's Budget

CONTRACTS TOTAL:
 FULLTIME POSITIONS: 16
 PARTTIME POSITIONS: 0
 NON PERM POSITIONS: 0
 TOTAL 16

CHIEF OF CONTRACTS
 Engineer/Architect III
 25-0375 P8915
 R25 PFT SS

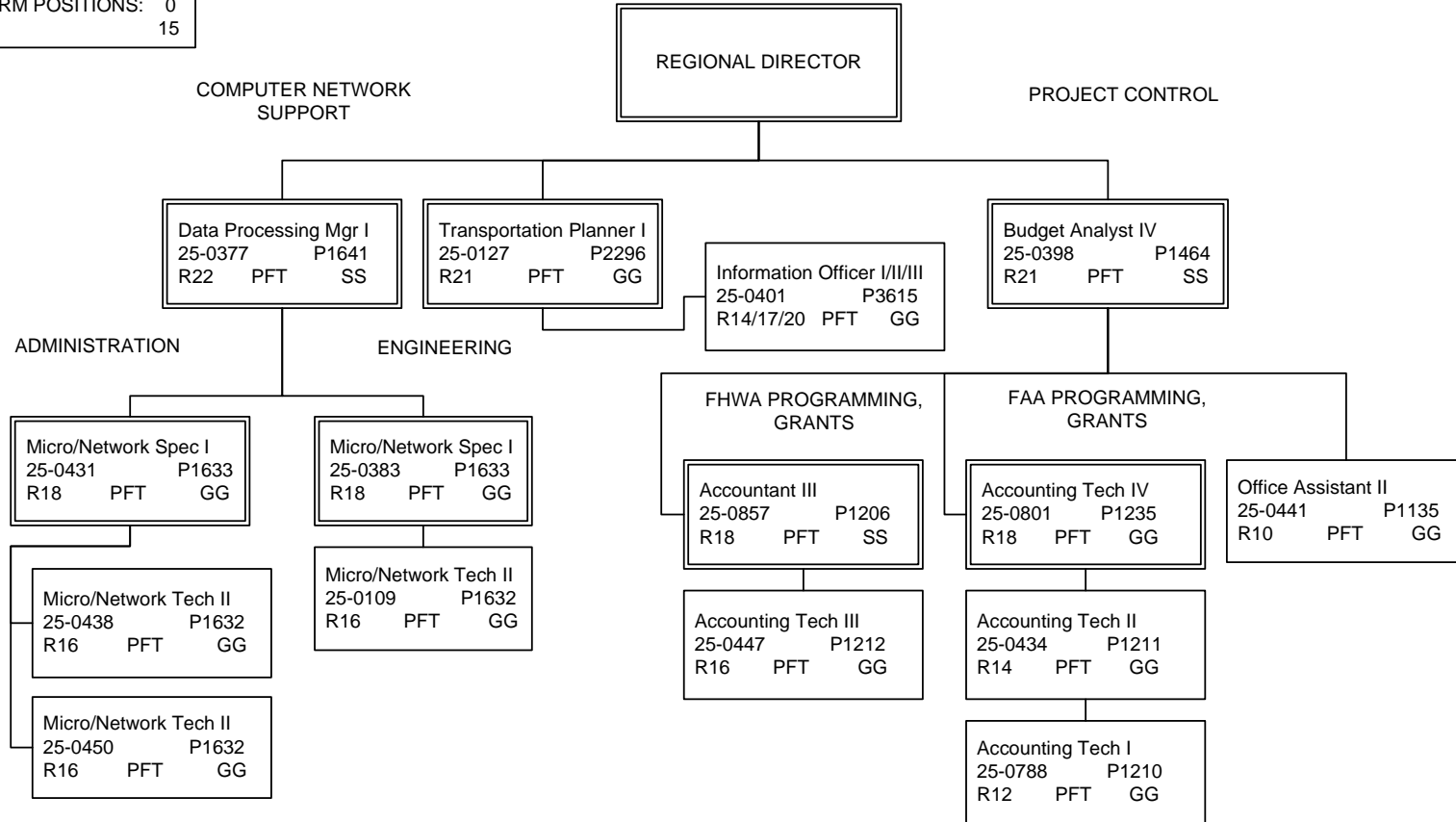


* Shared staff between PSA Unit and Construction Contract Unit

Note: All positions are located in Anchorage.

Department of Transportation & Public Facilities
 RDU: Design, Engineering and Construction
 COMPONENT: Central Region Construction and CIP Support (2293)
 FY2015 Governor's Budget

PROGRAM MANAGEMENT:	
FULLTIME POSITIONS:	15
PARTTIME POSITIONS:	0
NON PERM POSITIONS:	0
TOTAL	15



Note: All positions are located in Anchorage.