

DEPARTMENT OF TRANSPORTATION AND PUBLIC FACILITIES  
 NORTHERN REGION CONSTRUCTION AND CIP SUPPORT  
 FY 2015 GOVERNOR'S REQUEST

NORTHERN REGION CONSTRUCTION & CIP SUPPORT	
Positions	Total
Full-Time	73
Seasonal	90
Non-Perm	10
<b>Total</b>	<b>173</b>

Fairbanks (JBA)

**REGIONAL DIRECTOR**  
 Asst. Commissioner  
 251239 (XE) 27

**CONSTRUCTION**  
 (see Chart 2 and 3)

**REGIONAL PROJECT CONTROL  
CHIEF**

Accountant IV  
 251752 (SS) 20

**REGIONAL IT MANAGER**

Data Processing Manager I  
 251376 (SS) 22

**OPERATING BUDGET**

Budget Analyst III  
 PFT  
 251248 (GG) 19

Accounting Tech III  
 251385 (GG) 16

Accounting Tech III  
 251403 (GG) 16

Analyst/Programmer IV  
 251675 (GG) 20

Micro/Network Spec I  
 251462 (GP) 18

Micro/Network Spec I  
 251561 (GP) 18

Micro/Network Spec II  
 251610 (GP) 20

College Intern III/IV  
 25IN0927 (EE) 10/12

**Budget Manager**  
 Admin Officer I  
 251367 (SS) 17

**Recruitment Coordinator**  
 Admin Asst III  
 251256 (GP) 15

Acct Clerk  
 251674 (GG) 10

Office Assistant II  
 251638 (GP) 10

CHART 1

Positions	Total
Full-Time	11
Seasonal	0
Non Perm	1
<b>Total</b>	<b>12</b>

DEPARTMENT OF TRANSPORTATION AND PUBLIC FACILITIES  
 NORTHERN REGION CONSTRUCTION AND CIP SUPPORT  
 FY 2015 GOVERNOR'S REQUEST

Fairbanks (JBA)

**REGIONAL CONST ENGINEER**  
 Eng/Arch V  
 251634 (SS) 27

**CONST GROUP CHIEF**  
 Eng/Arch IV  
 251366 (SS) 26

**CONST GROUP CHIEF**  
 Eng/Arch IV  
 251368 (SS) 26

**QUALITY ASSURANCE**  
 Eng/Arch III  
 251838 (SS) 25

**CONST MANAGER**  
 Eng/Arch III  
 251407 (SS) 25

**CONST MANAGER**  
 Eng/Arch III  
 251384 (SS) 25

**CONST MANAGER**  
 Eng/Arch III  
 251411 (SS) 25

**NR CONST. LAB**  
 Eng Asst II  
 251436 (GP) 19

Staff assigned as required  
 (see Page 2 of Chart 2)

Staff assigned as required  
 (see Page 2 of Chart 2)

**CONST MANAGER**  
 Eng/Arch III  
 251603 (SS) 25

**CONST MANAGER**  
 Eng/Arch II  
 251371 (SS) 23

**STORMWATER SPECIALIST**  
 Eng/Arch I  
 251434 (GP) 22

Admin Assist II  
 251451 (SS) 14

**QA / MATERIALS**  
 Eng Associate  
 253401 (GG) 21

Staff assigned as required  
 (see Page 2 of Chart 2)

Staff assigned as required  
 (see Page 2 of Chart 2)

**ENVIRONMENTAL LIAISON**  
 Eng Asst III  
 251657 (GP) 21

Office Assist III  
 251461 (GP) 11

Eng Asst III  
 253730 (GP) 21

**CONST MANAGER**  
 Eng/Arch II  
 251827 (SS) 23

**TRAFFIC COORDINATOR**  
 Eng Asst III  
 251447 (GP) 21

**Environmental**  
 Eng Asst III  
 251534(S) (GP) 21

Office Assist I  
 251410 (GP) 8

Eng Asst II  
 251443 (GP) 19

Eng Associate  
 251816 (GG) 21

Maint Gen Journey  
 251494 (LL) 54

Staff assigned as required  
 (see Page 2 of Chart 2)

Office Assist I  
 251767 (GP) 8

**CONCURRENT REVIEW**  
 Eng Associate  
 251405 (GG) 21

Staff assigned as required  
 (see Page 2 of Chart 2)

Maint Gen SJ  
 251515(S) (LL) 58

Staff assigned as required  
 (see Page 2 of Chart 2)

**NOME CONST MANAGER  
 and Western Area Staff  
 (see Chart 3)**

Positions	Total
Full-Time	55
Seasonal	67
Non-perm	10
<b>Total</b>	<b>132</b>

All positions located in Fairbanks unless otherwise noted

Fairbanks (JBA)

STAFF ASSIGNED AS REQUIRED

Eng Associate (GP/GG) 21
251387
251431
251573
251578(S)
251609
251633
251705
251769
251782(S)**
251797
253402

Eng Asst III (GP) 21
251412
251454
251639
251656(S)
251658
251765
251781
251784(S)
251796
251869(S)
253731
253732

Eng Asst II (GP/GG) 19
251449
251455(S)
251457
251459
251541(S)
251548(S)
251555
251557(S)
251579(S)
251580
251582(S)
251660(S)
251661(S)
251742(S)
251761(S)
253405 (EIT)
253521
253525

Eng Asst I (GP/GG) 17
251637
251818(S)
253526
253527
253528
EA I/II positions
251625(S)
EA I/II/III positions
251473(S)
251632(S)

Eng Technician (J) (LL) 54
251464(S)
251465(S)
251469(S)
251474(S)
251479(S)
251524(S)
251667(S)
251748(S)
251758(S)
251852(S)
251862(S)

Eng Technician (SJ3) (LL) 55
251480(S)
251484(S)
251485(S)
251486(S)
251492(S)
251615(S)
251678(S)
251762(S)
251854(S)
251857(S)
251875(S)
251876(S)

Eng Technician (SJ2) (LL) 57
251502(S)
251505(S)
251507(S)
251508(S)
251511(S)
251518(S)
251519(S)
251525(S)
251566(S)
251569(S)
251596(S)
251684(S)
251688(S)
251689(S)
251691(S)***
251693(S)
251697(S)
251700(S)
251701(S)
251710(S)
251745(S)
251787(S)
251880(S)

\*\*Position assigned to Valdez (EAA)  
 \*\*\* Position resides in Deadhorse (MBC), but assigned to Fairbanks project managers

Legend
J = Journey
SJ = SubJourney

Fairbanks (JBA)

STAFF ASSIGNED AS REQUIRED

**NON PERMANENT  
 POSITIONS  
 Assigned as needed**

Eng Tech SJ I/II  
 25-NP077  
 25IN1005 (LL) 59/57

Eng Tech SJ I/II  
 25-NP082  
 25IN1010 (LL) 59/57

College Interns / Environmental

---

College Intern I/II/III/IV (EE) 8/9/10/12  
 25IN1114

College Intern II (EE) 09  
 25IN1115

College Intern II (EE) 09  
 25IN1302

Eng Tech SJ I/II  
 25-NP078  
 25IN1006 (LL) 59/57

Eng Tech SJ I/II  
 25-NP083  
 25IN1011 (LL) 59/57

Eng Tech SJ I/II  
 25-NP079  
 25IN1007 (LL) 59/57

Eng Tech SJ I/II  
 25-NP084  
 25IN1012 (LL) 59/57

Eng Tech SJ I/II  
 25-NP080  
 25IN1008 (LL) 59/57

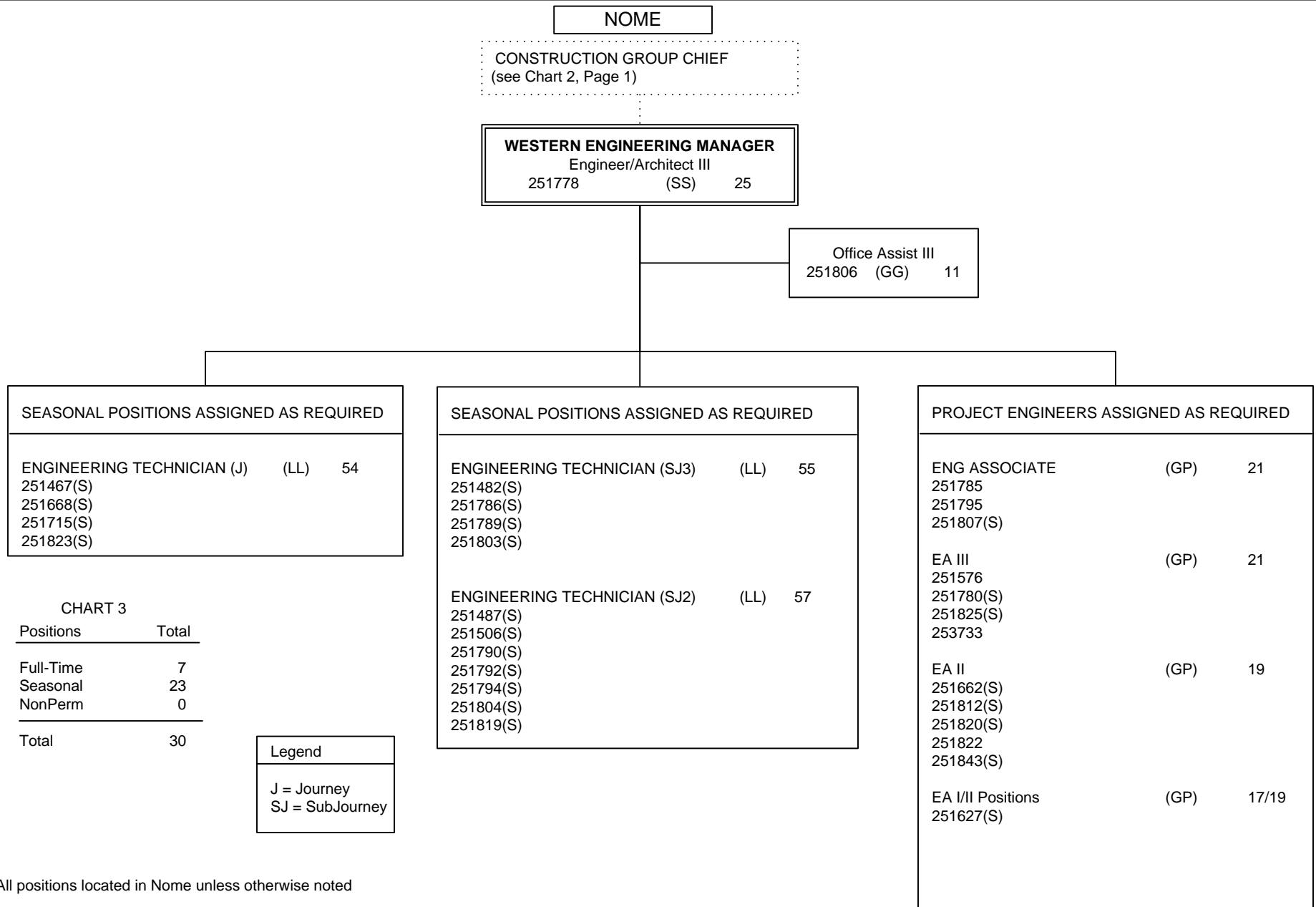
Eng Tech SJ I/II  
 25-NP085  
 25IN1013 (LL) 59/57

Eng Tech SJ I/II  
 25-NP081  
 25IN1009 (LL) 59/57

Eng Tech SJ I/II  
 25-NP086  
 25IN1014 (LL) 59/57

Legend
J = Journey
SJ = SubJourney

DEPARTMENT OF TRANSPORTATION AND PUBLIC FACILITIES  
 NORTHERN REGION CONSTRUCTION AND CIP SUPPORT  
 FY 2015 GOVERNOR'S REQUEST



SEASONAL POSITIONS ASSIGNED AS REQUIRED		
ENGINEERING TECHNICIAN (J)	(LL)	54
251467(S)		
251668(S)		
251715(S)		
251823(S)		

SEASONAL POSITIONS ASSIGNED AS REQUIRED		
ENGINEERING TECHNICIAN (SJ3)	(LL)	55
251482(S)		
251786(S)		
251789(S)		
251803(S)		
ENGINEERING TECHNICIAN (SJ2)	(LL)	57
251487(S)		
251506(S)		
251790(S)		
251792(S)		
251794(S)		
251804(S)		
251819(S)		

PROJECT ENGINEERS ASSIGNED AS REQUIRED		
ENG ASSOCIATE	(GP)	21
251785		
251795		
251807(S)		
EA III	(GP)	21
251576		
251780(S)		
251825(S)		
253733		
EA II	(GP)	19
251662(S)		
251812(S)		
251820(S)		
251822		
251843(S)		
EA I/II Positions	(GP)	17/19
251627(S)		

CHART 3

Positions	Total
Full-Time	7
Seasonal	23
NonPerm	0
<b>Total</b>	<b>30</b>

Legend
J = Journey
SJ = SubJourney

All positions located in Nome unless otherwise noted