

Juneau (AWA)

SOUTHEAST REGION DESIGN & ENGINEERING SERVICES	
POSITIONS	TOTAL
FULL-TIME	76
SEASONAL	6
NON PERM	4
<b>TOTAL</b>	<b>86</b>

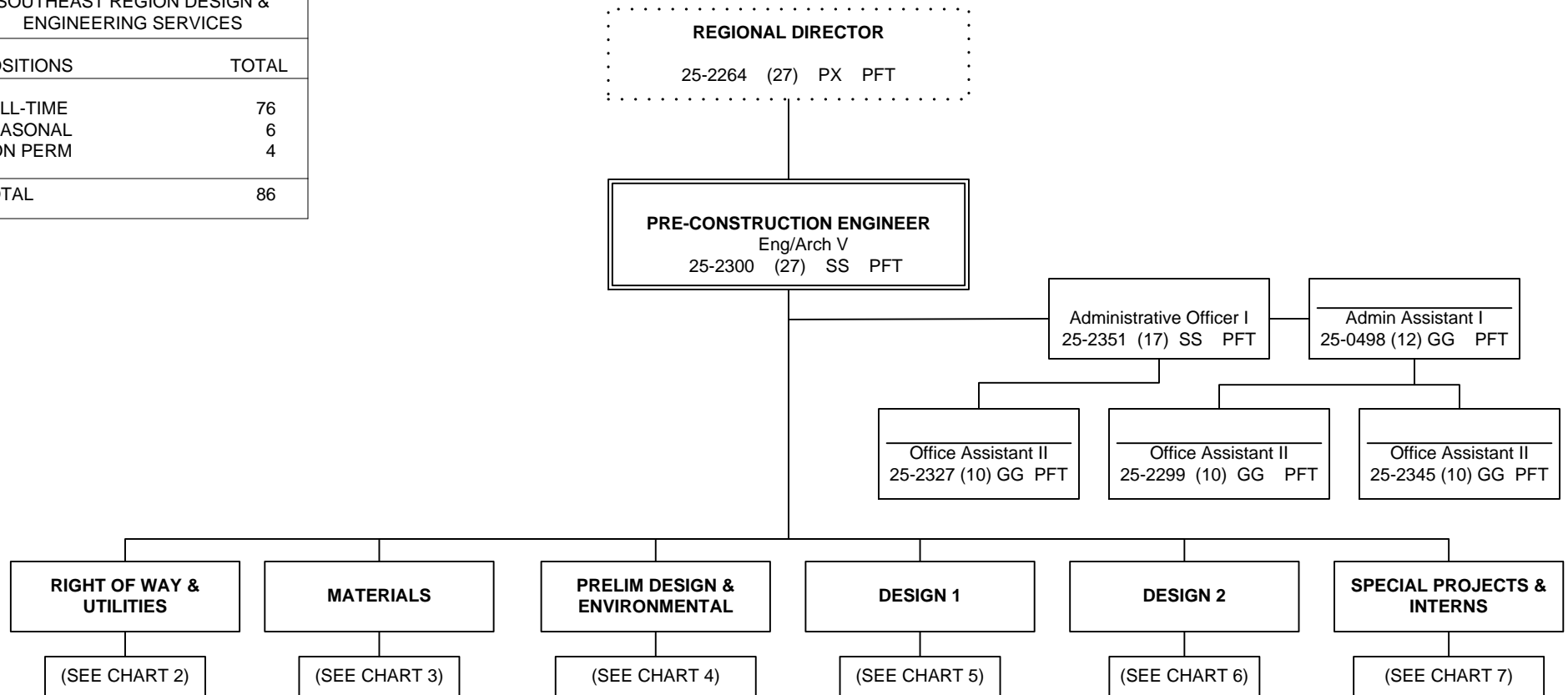


CHART 1

Positions	Total
Full-Time	6
Seasonal	0
<b>Total</b>	<b>6</b>

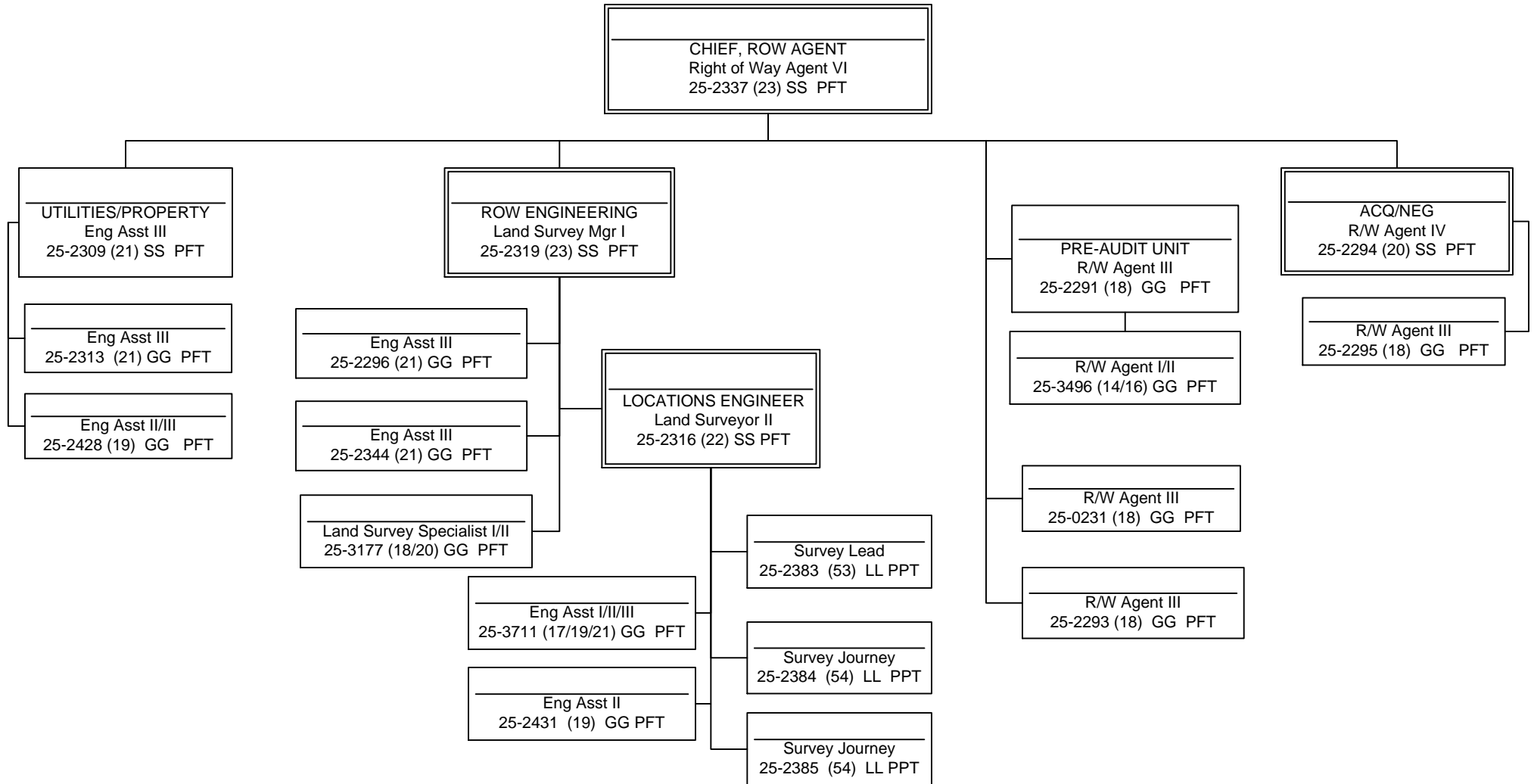


CHART 2

Positions	Total
Full-Time	17
Seasonal	3
<b>Total</b>	<b>20</b>

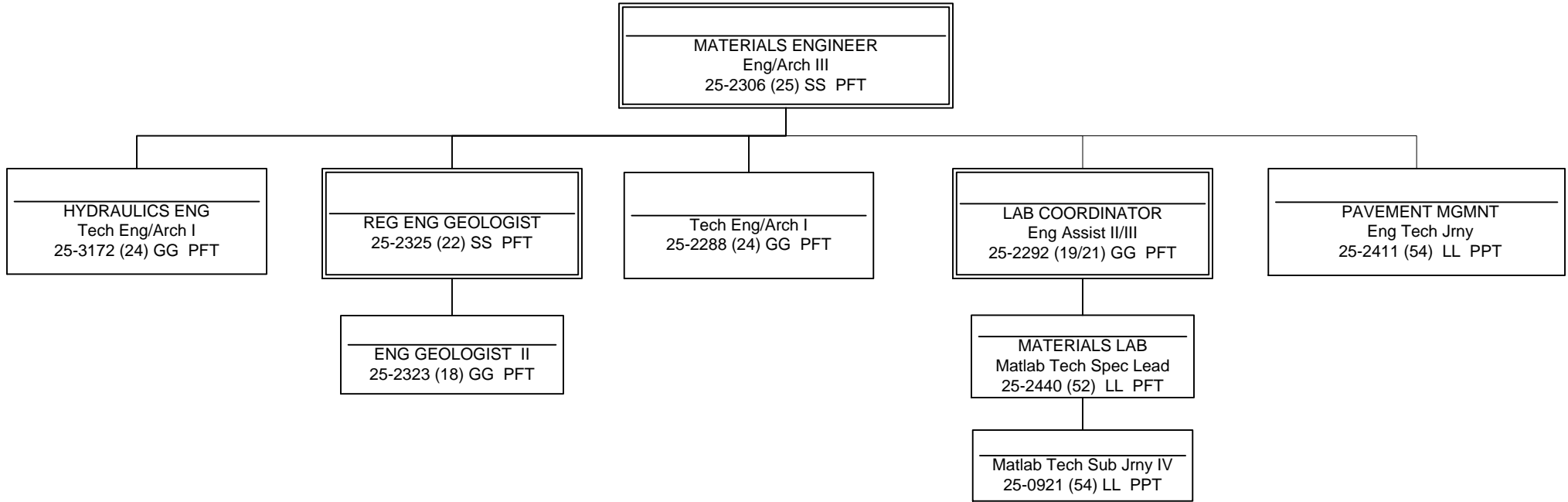
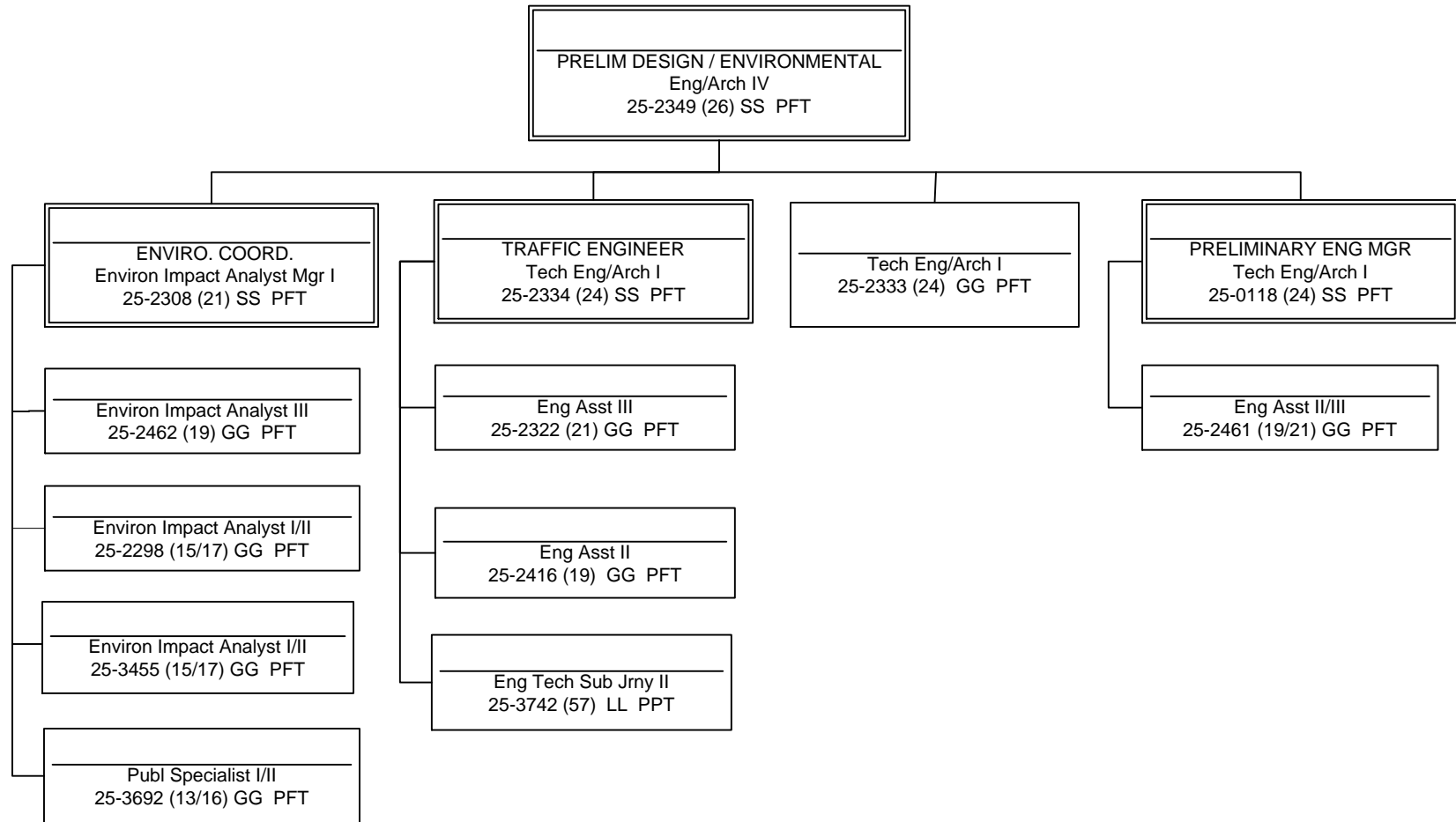


CHART 3

Positions	Total
Full-Time	7
Seasonal	2
<b>Total</b>	<b>9</b>



I

CHART 4

Positions	Total
Full-Time	12
Seasonal	1
<b>Total</b>	<b>13</b>

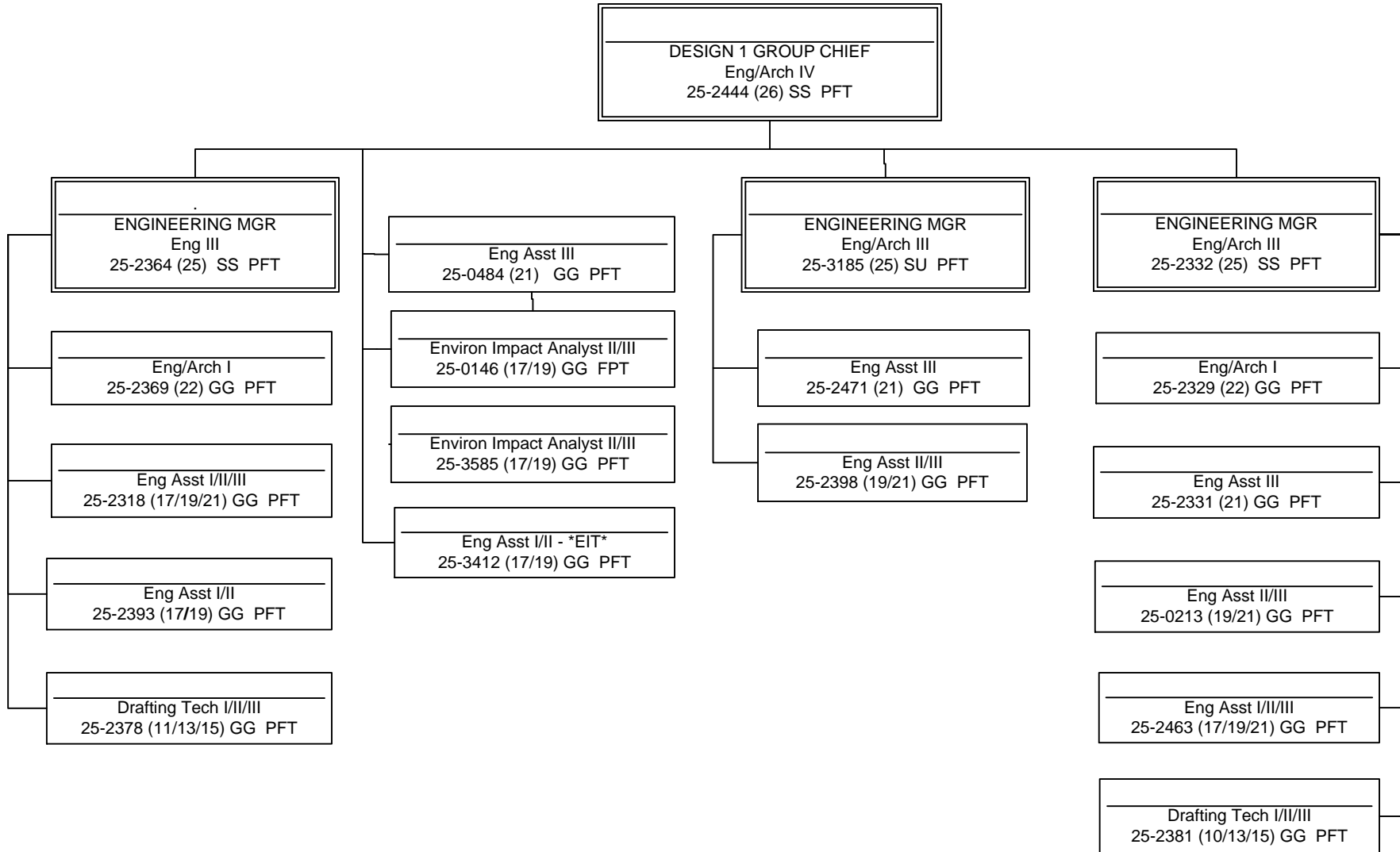


CHART 5

Positions	Total
Full-Time	19
Seasonal	0
<b>Total</b>	<b>19</b>

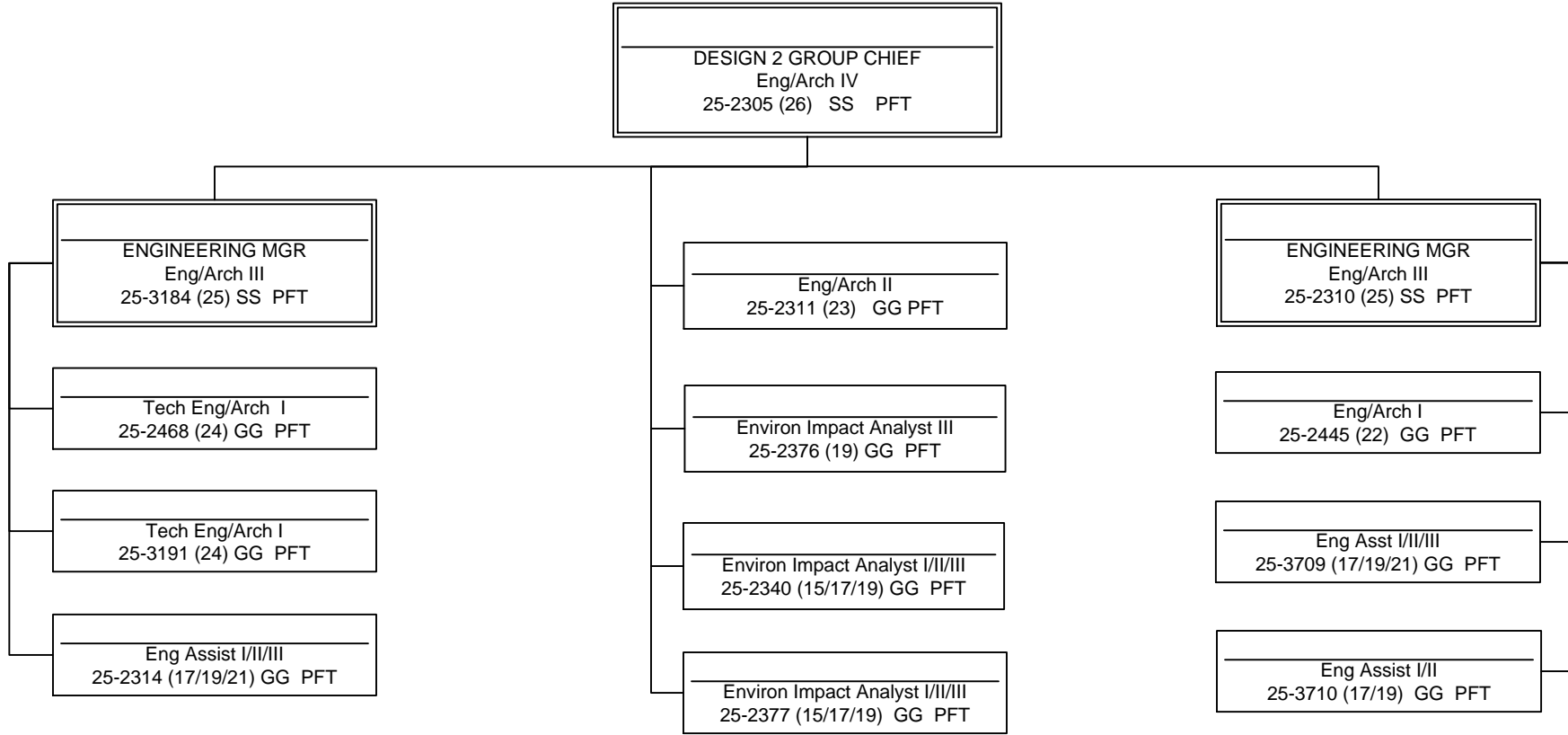
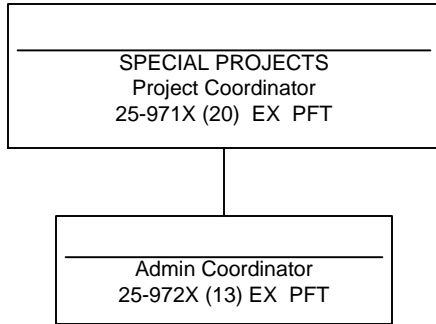


CHART 6

Positions	Total
Full-Time	13
Seasonal	0
<b>Total</b>	<b>13</b>



**NONPERMANENT POSITIONS – Assigned As Needed**

College Intern I/II/III  
 25-IN1107 (08/09/10) EE NP

College Intern I/II/III/IV  
 25-IN1117 (8/9/10/12) EE NP

College Intern I/II/III/IV  
 25-IN1118 (8/9/10/12) EE NP

College Intern I/II/III/IV  
 25-IN1119 (8/9/10/12) EE NP

CHART 7

Positions	Total
Full-Time	2
Seasonal	0
Non Permanent	4
<b>Total</b>	<b>6</b>