

Health and Social Services
 Office of Children's Services
 Front Line Social Worker (2305)
 Northern Region
 FY2016

Protective Services
 Manager II
 06-4507
 R22 CL
 Fairbanks

Nurse IV (Psych)
 06-4601
 R22 CL
 Fairbanks

Protective Services
 Specialist III
 06-3954
 R19 CL
 Fairbanks

Protective Services
 Specialist IV
 06-3792
 R20 CL
 Fairbanks

Protective Services
 Manager I
 06-3016
 R21 CL
 Fairbanks

Protective Services
 Specialist II
 06-9292
 R17 CL
 Bethel

Community Care
 Licensing Spec II
 06-3902
 R18 CL
 Fairbanks

Office Assistant I
 06-4605
 R8 CL
 Fairbanks

Office Assistant I
 06-4665
 R8 CL
 Fairbanks

Protective
 Services
 Specialist IV
 06-3770
 R20 CL
 Nome

Protective Services
 Specialist III
 06-3102
 R19 CL
 Fairbanks

Protective
 Services
 Specialist IV
 06-3200
 R20 CL
 Fairbanks

Protective
 Services
 Specialist IV
 06-3462
 R20 CL
 Barrow

Protective
 Services
 Specialist IV
 06-9159
 R20 CL
 Kotzebue

Social Services
 Associate II
 06-3946
 R12 CL
 Fairbanks

Protective
 Services
 Specialist IV
 06-3047
 R20 CL
 Delta Junction

Community Care
 Licensing Spec I
 06-4655
 R16 CL
 Fairbanks

Protective Services
 Specialist III
 06-9182
 R19 CL
 Fairbanks

Office Assistant I
 06-3039
 R8 CL
 Nome

Protective Services
 Specialist II
 06-4554
 R17 CL
 Nome

Protective Services
 Specialist II
 06-3880
 R17 CL
 McGrath

Protective Services
 Specialist II
 06-3180
 R17 CL
 Barrow

Protective Services
 Specialist II
 06-3170
 R17 CL
 Valdez

Protective Services
 Specialist II
 06-4556
 R17 CL
 Fairbanks

Protective Services
 Specialist II
 06-3188
 R17 CL
 Delta Junction

Community Care
 Licensing Spec I
 06-9181
 R16 CL
 Fairbanks

Protective Services
 Specialist II
 06-3356
 R17 CL
 Nome

Protective Services
 Specialist II
 06-3947
 R17 CL
 Nome

Social Services
 Associate II
 06-3064
 R12 CL
 McGrath

Protective Services
 Specialist I
 06-3893
 R15 CL
 Barrow

Social Services
 Associate I
 06-4663
 R10 CL
 Kotzebue

Protective Services
 Specialist I
 06-3182
 R15 CL
 Fairbanks

Social Services
 Associate II
 06-3206
 R12 CL
 Delta Junction

Community Care
 Licensing Spec I
 06-3369
 R16 CL
 Fairbanks

Protective Services
 Specialist II
 06-4659
 R17 CL
 Nome

Protective Services
 Specialist I
 06-4600
 R15 CL
 Kotzebue

Protective Services
 Specialist II
 06-3876
 R17 CL
 Galena

Social Services
 Associate I
 06-3855
 R10 CL
 Barrow

Protective Services
 Specialist II
 06-3418
 R17 CL
 Kotzebue

Protective Services
 Specialist II
 06-9193
 R17 CL
 Fairbanks

Protective Services
 Specialist II
 06-3271
 R17 CL
 Fairbanks

Community Care
 Licensing Spec I
 06-4557
 R16 CL
 Fairbanks

Office Assistant I
 06-4568
 R8 CL
 Fairbanks

Social Services
 Associate II
 06-9157
 R12 CL
 Nome

Social Services
 Associate II
 06-3196
 R12 CL
 Fairbanks

Protective Services
 Specialist II
 06-3422
 R17 CL
 Wasilla

Protective Services
 Specialist I
 06-3172
 R15 CL
 Kotzebue

Count: 47 FT

Health and Social Services
 Office of Children's Services
 Front Line Social Worker (2305)
 Northern Region
 FY2016

Protective Services
 Manager II
 06-4507
 R22 CL
 Fairbanks

Protective Services
 Manager I
 06-3014
 R21 CL
 Fairbanks

Administrative
 Officer II
 06-3115
 R19 CL
 Fairbanks

Protective Services
 Specialist II
 06-9142
 R17 CL
 Fairbanks

Protective Services
 Specialist IV
 06-3724
 R20 CL
 Fairbanks

Office Assistant I
 06-3856
 R8 CL
 Fairbanks

Protective Services
 Specialist IV
 06-4551
 R20 CL
 Fairbanks

Office Assistant I
 06-3730
 R8 CL
 Fairbanks

Protective Services
 Specialist IV
 06-3412
 R20 CL
 Fairbanks

Protective Services
 Specialist II
 06-3957
 R17 CL
 Fairbanks

Protective Services
 Specialist IV
 06-3950
 R20 CL
 Fairbanks

Eligibility
 Technician II
 06-8075
 R14 CL
 Fairbanks

Office Assistant III
 06-3037
 R11 CL
 Fairbanks

Protective Services
 Specialist III
 06-4553
 R19 CL
 Fairbanks

Protective Services
 Specialist II
 06-9160
 R17 CL
 Fairbanks

Protective Services
 Specialist II
 06-9192
 R17 CL
 Fairbanks

Protective Services
 Specialist II
 06-3217
 R17 CL
 Fairbanks

Social Services
 Associate I
 06-3750
 R10 CL
 Fairbanks

Protective Services
 Specialist II
 06-3159
 R17 CL
 Fairbanks

Protective Services
 Specialist II
 06-4657
 R17 CL
 Fairbanks

Protective Services
 Specialist II
 06-3436
 R17 CL
 Fairbanks

Eligibility
 Technician II
 06-3955
 R14 CL
 Fairbanks

Eligibility
 Technician II
 06-4596
 R14 CL
 Fairbanks

Protective Services
 Specialist I
 06-3434
 R15 CL
 Fairbanks

Protective Services
 Specialist II
 06-3066
 R17 CL
 Fairbanks

Protective Services
 Specialist II
 06-3350
 R17 CL
 Fairbanks

Protective Services
 Specialist II
 06-9161
 R17 CL
 Fairbanks

Protective Services
 Specialist II
 06-3766
 R17 CL
 Fairbanks

Protective Services
 Specialist I
 06-3073
 R15 CL
 Fairbanks

Protective Services
 Specialist II
 06-3765
 R17 CL
 Fairbanks

Protective Services
 Specialist II
 06-3140
 R17 CL
 Fairbanks

Administrative
 Assistant II
 06-3623
 R14 CL
 Fairbanks

Office Assistant II
 06-4639
 R10 CL
 Fairbanks

Protective Services
 Specialist II
 06-3749
 R17 CL
 Fairbanks

Social Services
 Associate II
 06-3857
 R12 CL
 Fairbanks

Protective Services
 Specialist II
 06-3751
 R17 CL
 Fairbanks

Protective Services
 Specialist II
 06-3997
 R17 CL
 Fairbanks

Protective Services
 Specialist I
 06-4558
 R15 CL
 Fairbanks

Protective Services
 Specialist II
 06-3433
 R17 CL
 Fairbanks

Protective Services
 Specialist I
 06-4552
 R15 CL
 Fairbanks

Social Services
 Associate II
 06-3389
 R12 CL
 Fairbanks

Accounting Clerk
 06-4638
 R10 CL
 Fairbanks

Accounting Clerk
 06-3867
 R10 CL
 Fairbanks

Protective Services
 Specialist II
 06-9191
 R17 CL
 Fairbanks

Protective Services
 Specialist II
 06-3027
 R17 CL
 Fairbanks

Office Assistant II
 06-3036
 R10 CL
 Fairbanks

Count: 45 FT

Health and Social Services
 Office of Children's Services
 Front Line Social Worker (2305)
 Anchorage Regional Office
 FY2016

Protective Services Manager II
 06-4506
 R22 CL
 Anchorage

Data Processing Manager I
 06-9304
 R22 CL
 Juneau

Social Services Program Officer
 06-3421
 R21 CL
 Anchorage

Protective Services Specialist II
 06-9302
 R17 CL
 Anchorage

Office Assistant II
 06-3082
 R10 CL
 Anchorage

Protective Services Manager I
 06-3085
 R21 CL
 Anchorage

Social Services Program Officer
 06-9167
 R21 CL
 Anchorage

Social Services Program Coordinator
 06-3937
 R20 CL
 Anchorage

Research Analyst III
 06-1351
 R18 CL
 Anchorage

Protective Services Specialist IV
 06-3125
 R20 CL
 Anchorage

Protective Services Specialist IV
 06-3711
 R20 CL
 Anchorage

Protective Services Specialist IV
 06-3430
 R20 CL
 Anchorage

Social Services Program Officer
 06-3068
 R21 CL
 Juneau

Social Services Program Coordinator
 06-9171
 R20 CL
 Anchorage

Social Services Program Coordinator
 06-9144
 R20 CL
 Anchorage

Protective Services Specialist II
 06-3061
 R17 CL
 Anchorage

Protective Services Specialist II
 06-3934
 R17 CL
 Anchorage

Protective Services Specialist II
 06-4628
 R17 CL
 Anchorage

Protective Services Specialist I
 06-4627
 R15 CL
 Anchorage

Protective Services Specialist I
 06-3043
 R15 CL
 Anchorage

Protective Services Specialist II
 06-9143
 R17 CL
 Anchorage

Community Care Licensing Spec III
 06-9273
 R20 CL
 Anchorage

Social Services Program Coordinator
 06-9168
 R20 CL
 Anchorage

Social Services Program Coordinator
 06-9145
 R20 CL
 Anchorage

Protective Services Specialist II
 06-3427
 R17 CL
 Anchorage

Protective Services Specialist II
 06-3960
 R17 CL
 Anchorage

Protective Services Specialist II
 06-3932
 R17 CL
 Anchorage

Protective Services Specialist II
 06-3045
 R17 CL
 Anchorage

Social Services Associate II
 06-3943
 R12 CL
 Anchorage

Protective Services Specialist II
 06-3270
 R17 CL
 Anchorage

Social Services Program Coordinator
 06-9169
 R20 CL
 Fairbanks

Office Assistant I
 06-3921
 R8 CL
 Anchorage

Protective Services Specialist II
 06-3888
 R17 CL
 Anchorage

Office Assistant II
 06-3390
 R10 CL
 Anchorage

Protective Services Specialist II
 06-4543
 R17 CL
 Anchorage

Protective Services Specialist I
 06-3935
 R15 CL
 Anchorage

Protective Services Specialist II
 06-3432
 R17 CL
 Anchorage

Social Services Associate I
 06-3748
 R10 CL
 Anchorage

Protective Services Specialist II
 06-3870
 R17 CL
 Anchorage

Social Services Associate II
 06-3941
 R12 CL
 Anchorage

Protective Services Specialist II
 06-3872
 R17 CL
 Anchorage

Protective Services Specialist II
 06-3764
 R17 CL
 Anchorage

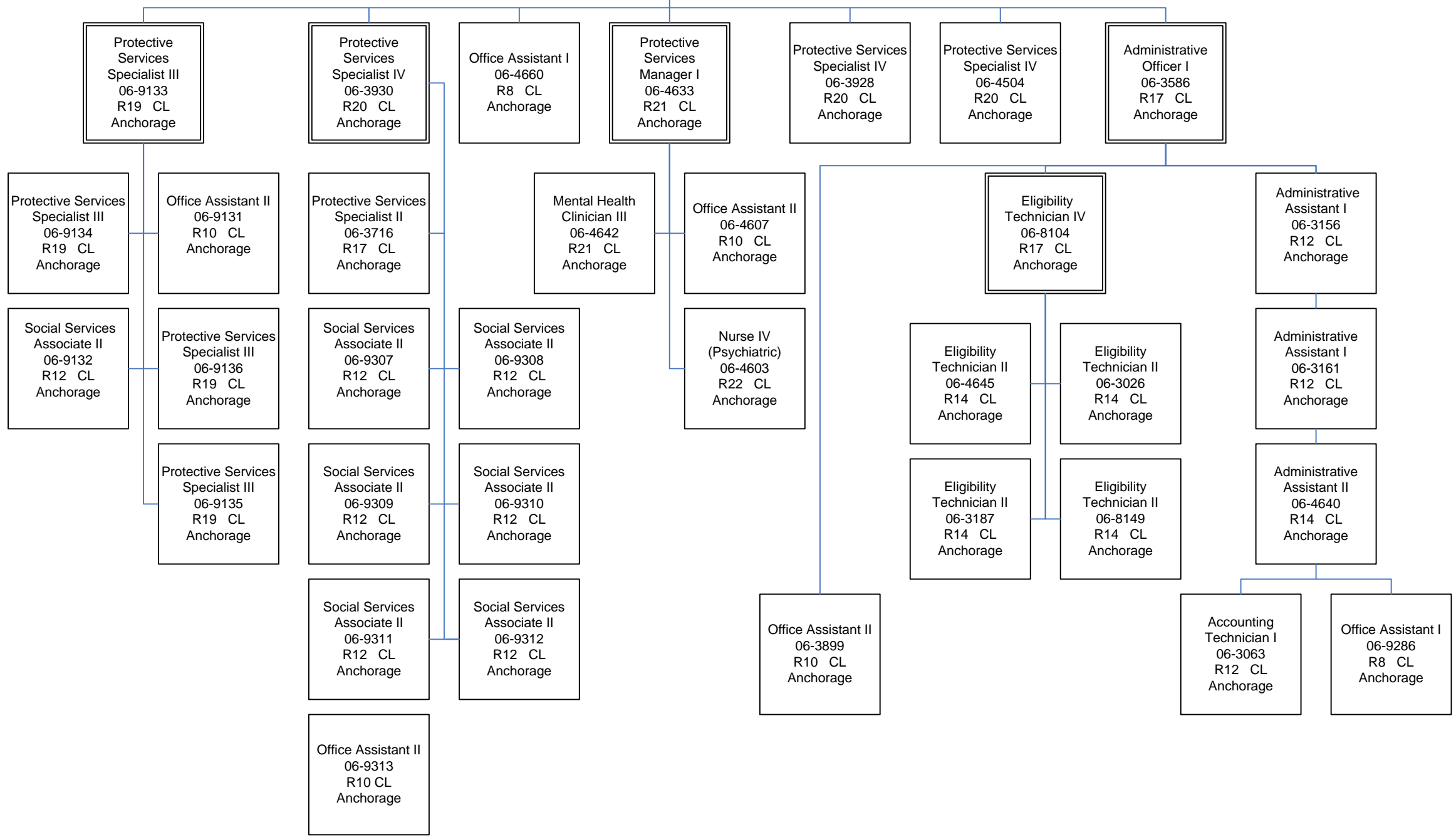
Protective Services Specialist I
 06-4632
 R15 CL
 Anchorage

Office Assistant I
 06-3924
 R8 CL
 Anchorage

Count: 42 FT

Health and Social Services
 Office of Children's Services
 Front Line Social Worker (2305)
 Anchorage Regional Office
 FY2016

Protective Services
 Manager II
 06-4506
 R22 CL
 Anchorage



Count: 33 FT

Health and Social Services
 Office of Children's Services
 Front Line Social Worker (2305)
 Anchorage Regional Office
 FY2016

Protective Services Manager I
 06-3878
 R21 CL
 Anchorage

Protective Services Specialist IV
 06-4626
 R20 CL
 Anchorage

Protective Services Specialist IV
 06-3018
 R20 CL
 Anchorage

Community Care Licensing Specialist II
 06-9176
 R18 CL
 Anchorage

Protective Services Specialist IV
 06-3936
 R20 CL
 Anchorage

Protective Services Specialist II
 06-9271
 R17 CL
 Anchorage

Protective Services Specialist II
 06-3425
 R17 CL
 Anchorage

Protective Services Specialist II
 06-3019
 R17 CL
 Anchorage

Protective Services Specialist I
 06-4629
 R15 CL
 Anchorage

Social Services Associate II
 06-3939
 R12 CL
 Anchorage

Community Care Licensing Specialist I
 06-9173
 R16 CL
 Anchorage

Social Services Associate II
 06-3942
 R12 CL
 Anchorage

Protective Services Specialist I
 06-4547
 R15 CL
 Anchorage

Protective Services Specialist I
 06-9270
 R15 CL
 Anchorage

Protective Services Specialist II
 06-3374
 R17 CL
 Anchorage

Protective Services Specialist II
 06-9156
 R17 CL
 Anchorage

Protective Services Specialist II
 06-3931
 R17 CL
 Anchorage

Protective Services Specialist II
 06-3076
 R17 CL
 Anchorage

Community Care Licensing Specialist I
 06-9174
 R16 CL
 Anchorage

Protective Services Specialist II
 06-3057
 R17 CL
 Anchorage

Protective Services Specialist II
 06-3922
 R17 CL
 Anchorage

Protective Services Specialist II
 06-9272
 R17 CL
 Anchorage

Protective Services Specialist II
 06-9194
 R17 CL
 Anchorage

Social Services Associate I
 06-3938
 R10 CL
 Anchorage

Protective Services Specialist II
 06-3424
 R17 CL
 Anchorage

Protective Services Specialist II
 06-3042
 R17 CL
 Anchorage

Community Care Licensing Specialist I
 06-9172
 R16 CL
 Anchorage

Protective Services Specialist I
 06-3044
 R15 CL
 Anchorage

Protective Services Specialist I
 06-3417
 R15 CL
 Anchorage

Protective Services Specialist II
 06-9195
 R17 CL
 Anchorage

Protective Services Specialist I
 06-3429
 R15 CL
 Anchorage

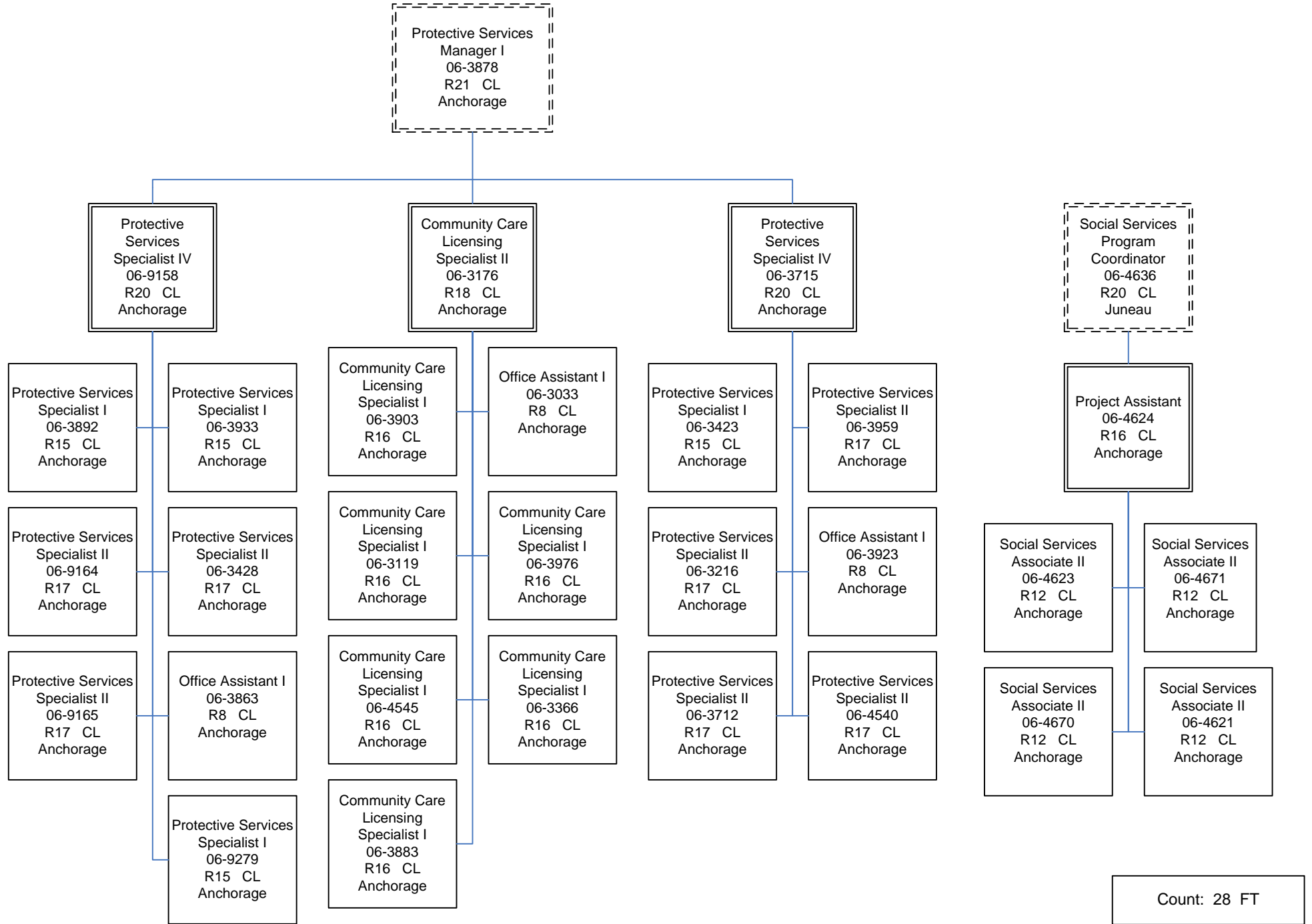
Protective Services Specialist II
 06-9282
 R17 CL
 Anchorage

Protective Services Specialist II
 06-9280
 R17 CL
 Anchorage

Protective Services Specialist II
 06-9267
 R17 CL
 Anchorage

Count: 34 FT

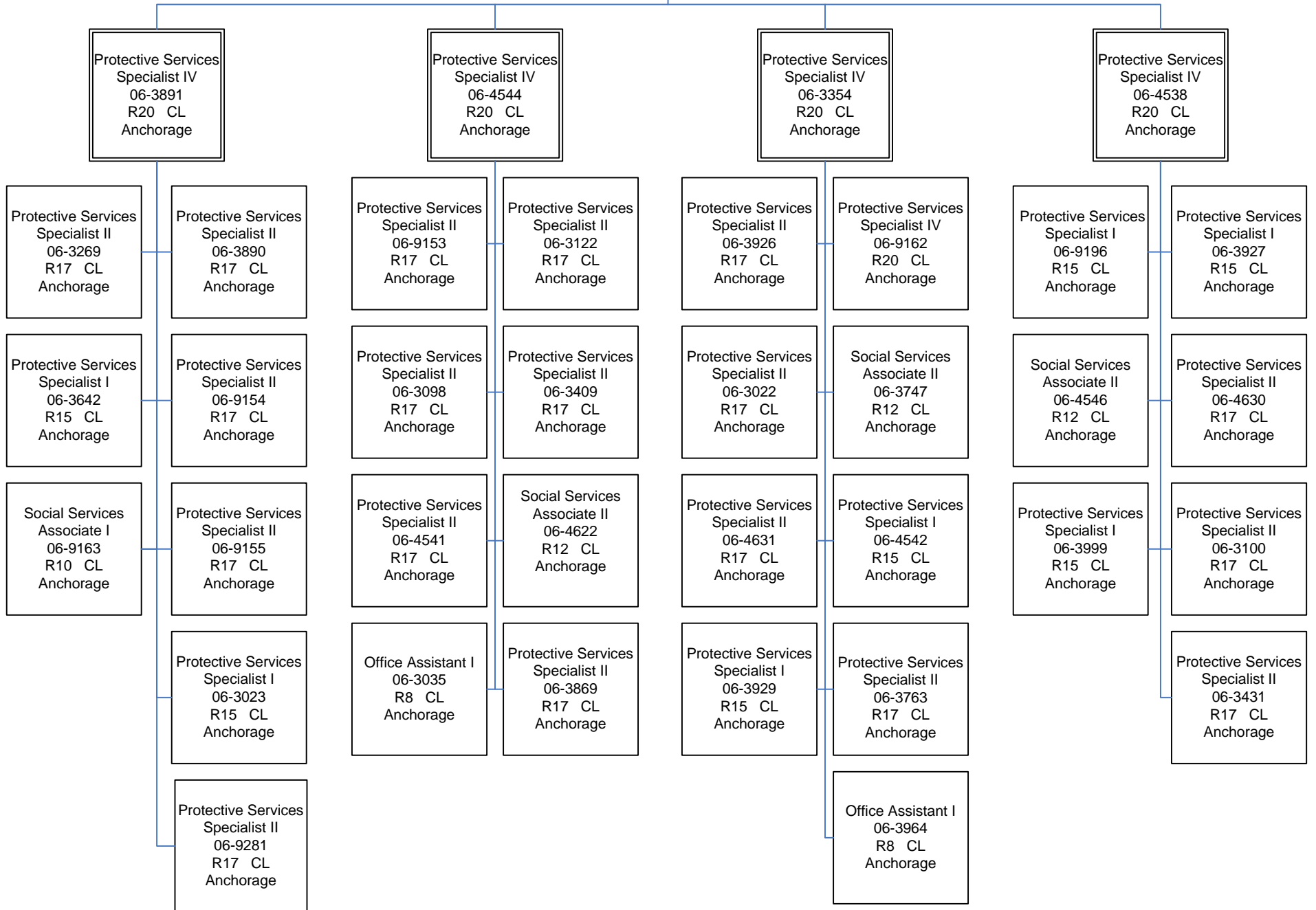
Health and Social Services
 Office of Children's Services
 Front Line Social Worker (2305)
 Anchorage Regional Office
 FY2016



Count: 28 FT

Health and Social Services
 Office of Children's Services
 Front Line Social Worker (2305)
 Anchorage Regional Office
 FY2016

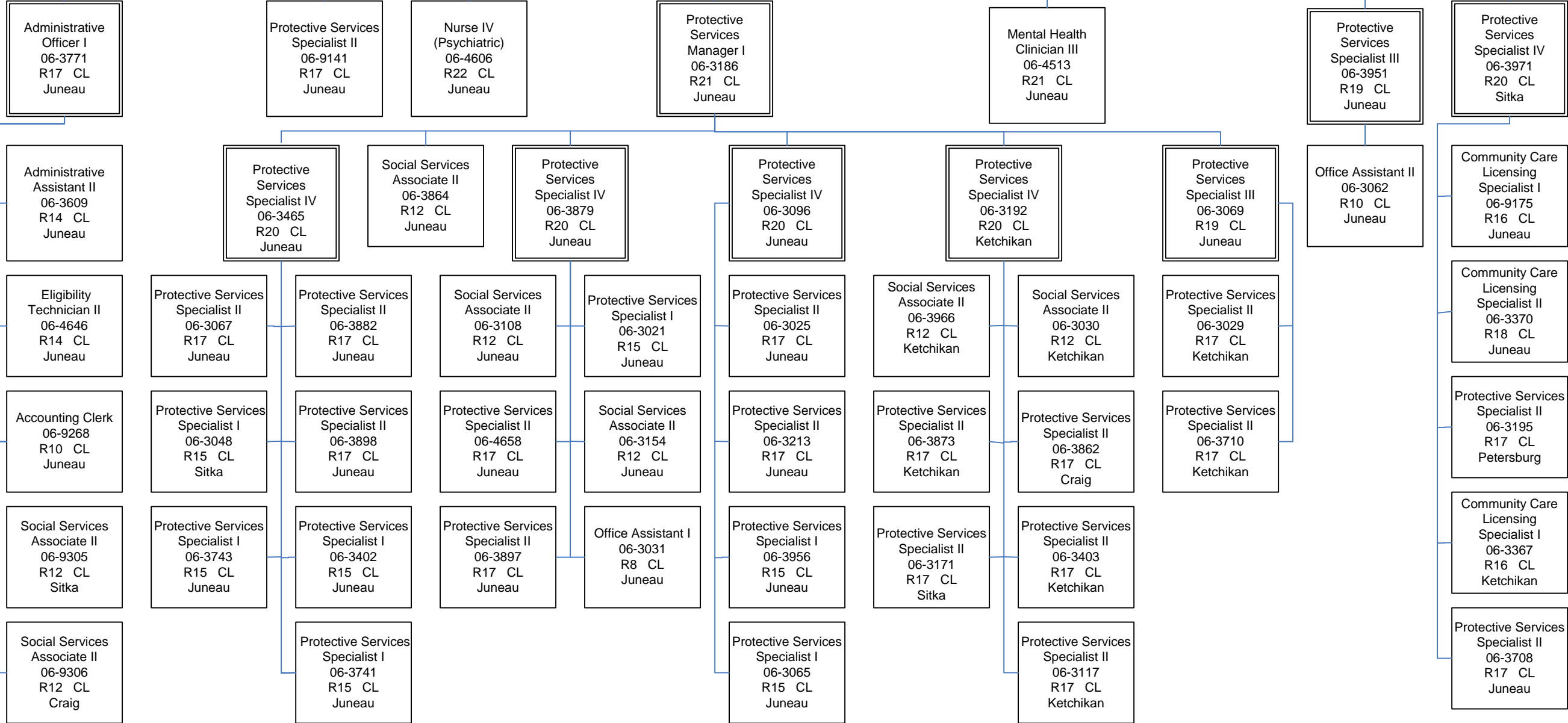
Protective Services
 Manager I
 06-3085
 R21 CL
 Anchorage



Count: 36 FT

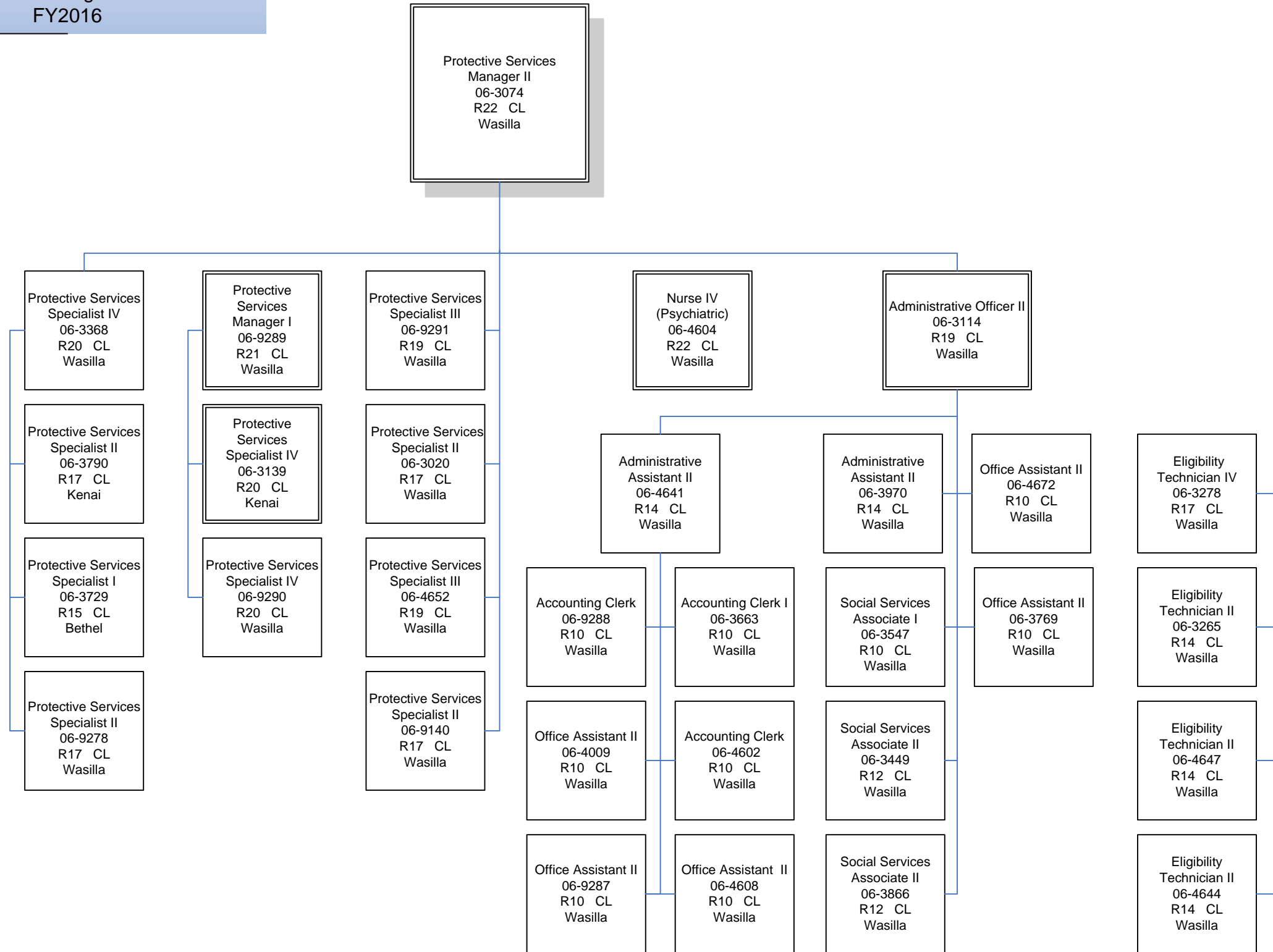
Health and Social Services
Office of Children's Services
Front Line Social Worker (2305)
Southeast Regional Office
FY2016

Protective Services
Manager II
06-4505
R22 CL
Juneau



Count: 51 FT

Health and Social Services
 Office of Children's Services
 Front Line Social Worker (2305)
 Southcentral Regional Office
 FY2016



Count: 31 FT

Health and Social Services
 Office of Children's Services
 Front Line Social Worker (2305)
 Southcentral Regional Office
 FY2016

Protective Services
 Manager II
 06-3074
 R22 CL
 Wasilla

Protective Services
 Manager I
 06-3015
 R21 CL
 Wasilla

Protective Services
 Specialist IV
 06-3408
 R20 CL
 Kodiak

Protective Services
 Specialist IV
 06-3126
 R20 CL
 Wasilla

Protective Services
 Specialist IV
 06-4537
 R20 CL
 Kenai

Protective Services
 Specialist IV
 06-9152
 R20 CL
 Homer

Protective Services
 Specialist IV
 06-9183
 R20 CL
 Wasilla

Protective Services
 Specialist IV
 06-4532
 R20 CL
 Wasilla

Protective Services
 Specialist II
 06-9188
 R17 CL
 King Salmon

Protective Services
 Specialist II
 06-3189
 R17
 King Salmon

Protective Services
 Specialist II
 06-3746
 R17 CL
 Wasilla

Protective Services
 Specialist II
 06-3202
 R17 CL
 Wasilla

Protective Services
 Specialist I
 06-4535
 R15 CL
 Kenai

Protective Services
 Specialist II
 06-3789
 R17 CL
 Kenai

Protective Services
 Specialist II
 06-3141
 R17 CL
 Kenai

Protective Services
 Specialist IV
 06-3691
 R20 CL
 Wasilla

Protective Services
 Specialist I
 06-9146
 R15 CL
 Wasilla

Protective Services
 Specialist II
 06-3940
 R17 CL
 Wasilla

Protective Services
 Specialist I
 06-9187
 R15 CL
 Wasilla

Protective Services
 Specialist II
 06-9149
 R17 CL
 Wasilla

Social Services
 Associate II
 06-3109
 R12 CL
 Kodiak

Protective Services
 Specialist II
 06-3365
 R17 CL
 Wasilla

Protective Services
 Specialist II
 06-4533
 R17 CL
 Wasilla

Protective Services
 Specialist II
 06-9190
 R17 CL
 Kenai

Protective Services
 Specialist II
 06-4648
 R17 CL
 Kenai

Protective Services
 Specialist II
 06-9148
 R17 CL
 Homer

Protective Services
 Specialist II
 06-1805
 R17 CL
 Wasilla

Protective Services
 Specialist II
 06-4534
 R17 CL
 Wasilla

Protective Services
 Specialist II
 06-9184
 R17 CL
 Wasilla

Protective Services
 Specialist II
 06-9283
 R17 CL
 Wasilla

Protective Services
 Specialist II
 06-3745
 R17 CL
 Kodiak

Protective Services
 Specialist II
 06-3070
 R17 CL
 Kodiak

Protective Services
 Specialist II
 06-9186
 R17 CL
 Wasilla

Protective Services
 Specialist II
 06-3407
 R17 CL
 Wasilla

Protective Services
 Specialist II
 06-3877
 R17 CL
 Kenai

Social Services
 Associate II
 06-9147
 R12 CL
 Kenai

Protective Services
 Specialist II
 06-3034
 R17 CL
 Homer

Protective Services
 Specialist II
 06-3194
 R17 CL
 Gakona

Protective Services
 Specialist II
 06-4651
 R17 CL
 Wasilla

Protective Services
 Specialist II
 06-3046
 R17 CL
 Dillingham

Protective Services
 Specialist I
 06-4539
 R15 CL
 Dillingham

Protective Services
 Specialist II
 06-3243
 R17 CL
 Wasilla

Social Services
 Associate II
 06-9276
 R12 CL
 Wasilla

Office Assistant I
 06-3143
 R8 CL
 Kenai

Protective Services
 Specialist II
 06-9284
 R17 CL
 Kenai

Office Assistant I
 06-3859
 R8 CL
 Homer

Social Services
 Associate I
 06-3860
 R10 CL
 Gakona

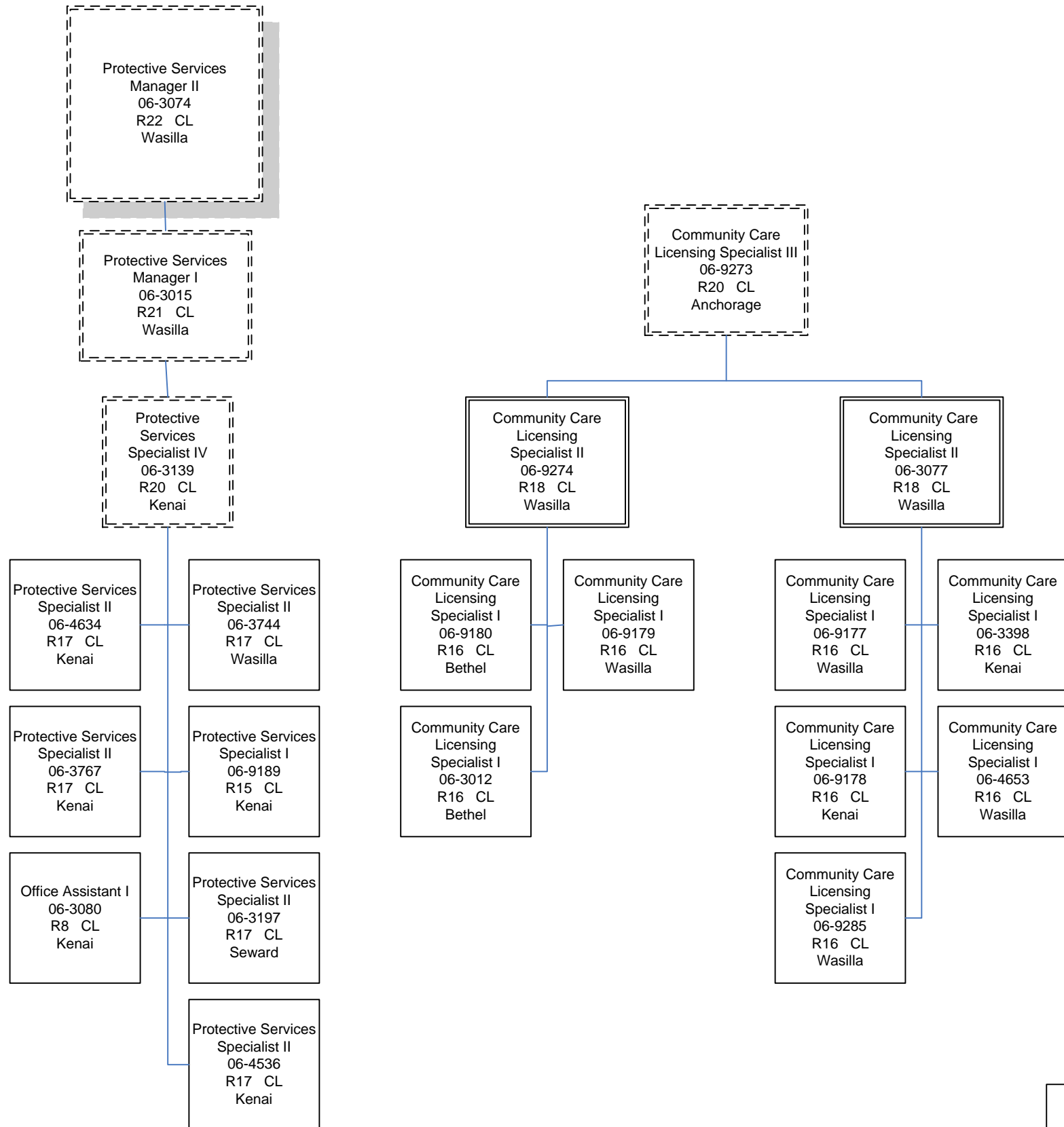
Protective Services
 Specialist II
 06-3411
 R17 CL
 Valdez

Office Assistant I
 06-3058
 R8 CL
 Dillingham

Protective Services
 Specialist II
 06-3875
 R17 CL
 Wasilla

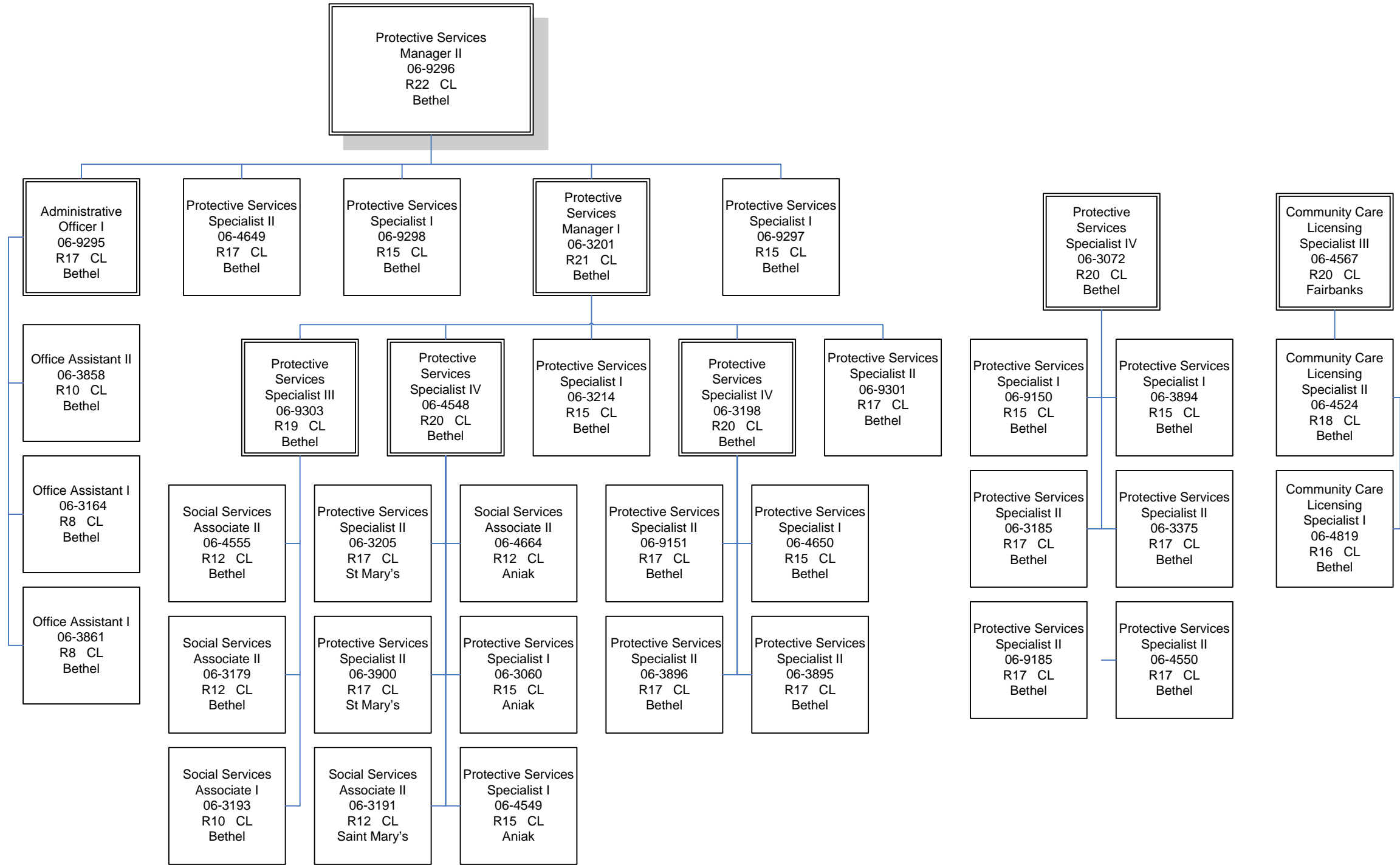
Count: 49 FT

Health and Social Services
 Office of Children's Services
 Front Line Social Worker (2305)
 Southcentral Regional Office
 FY2016



Count: 18 FT

Health and Social Services
 Office of Children's Services
 Front Line Social Worker (2305)
 Western Regional Office
 FY2016



Count: 37 FT