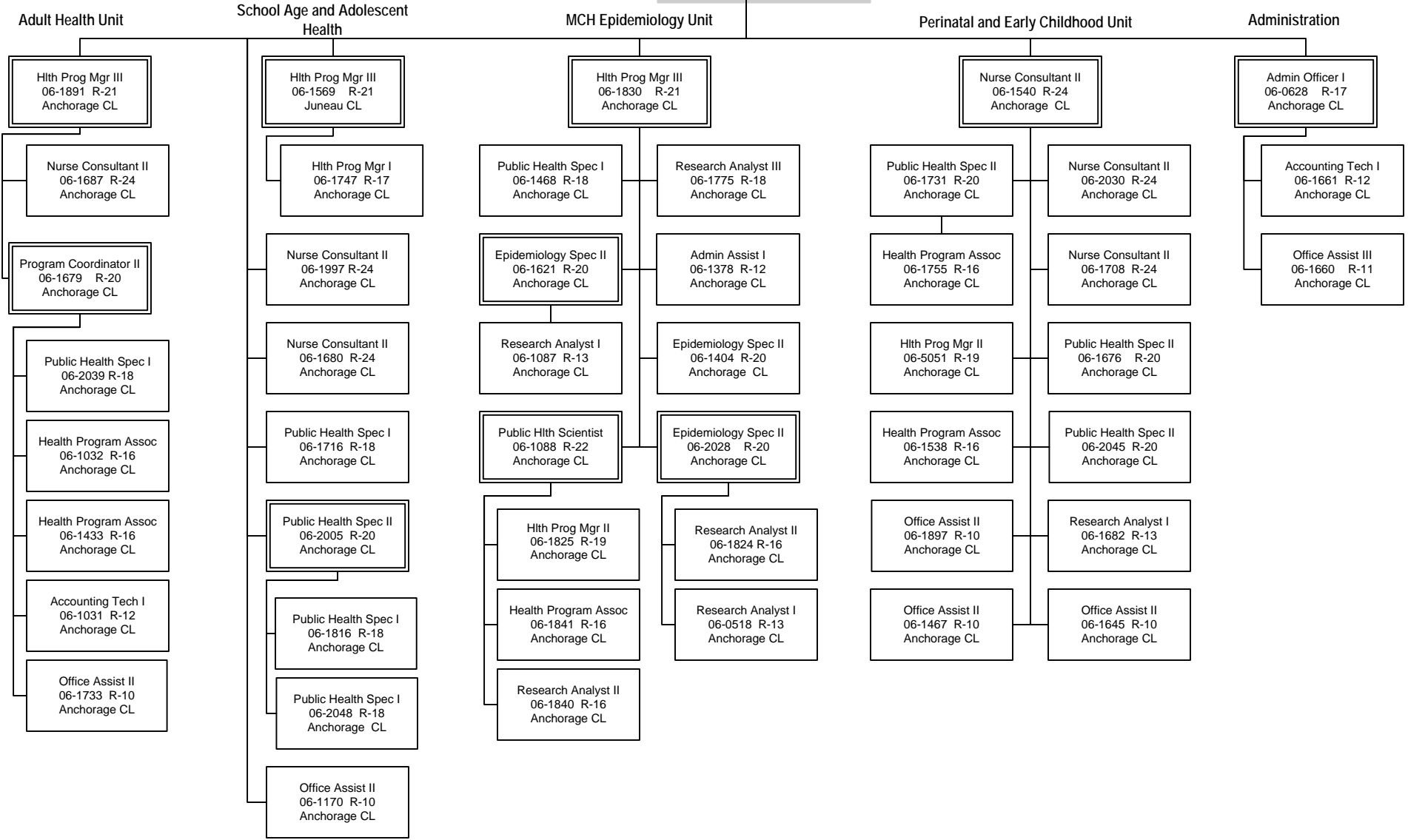


Department of Health & Social Services
 RDU: Public Health (502)
 COMPONENT: Women's, Children's and Family Health

Public Hlth Nurse V
 06-1831 R-25
 Anchorage CL



FY16 Governor Amended Org. Chart
 WCFH (Budget)
 Division of Public Health
 Women, Children and Family Health
 PFT: 48 PPT: 0 NP: 0
 Effective: January 28, 2015