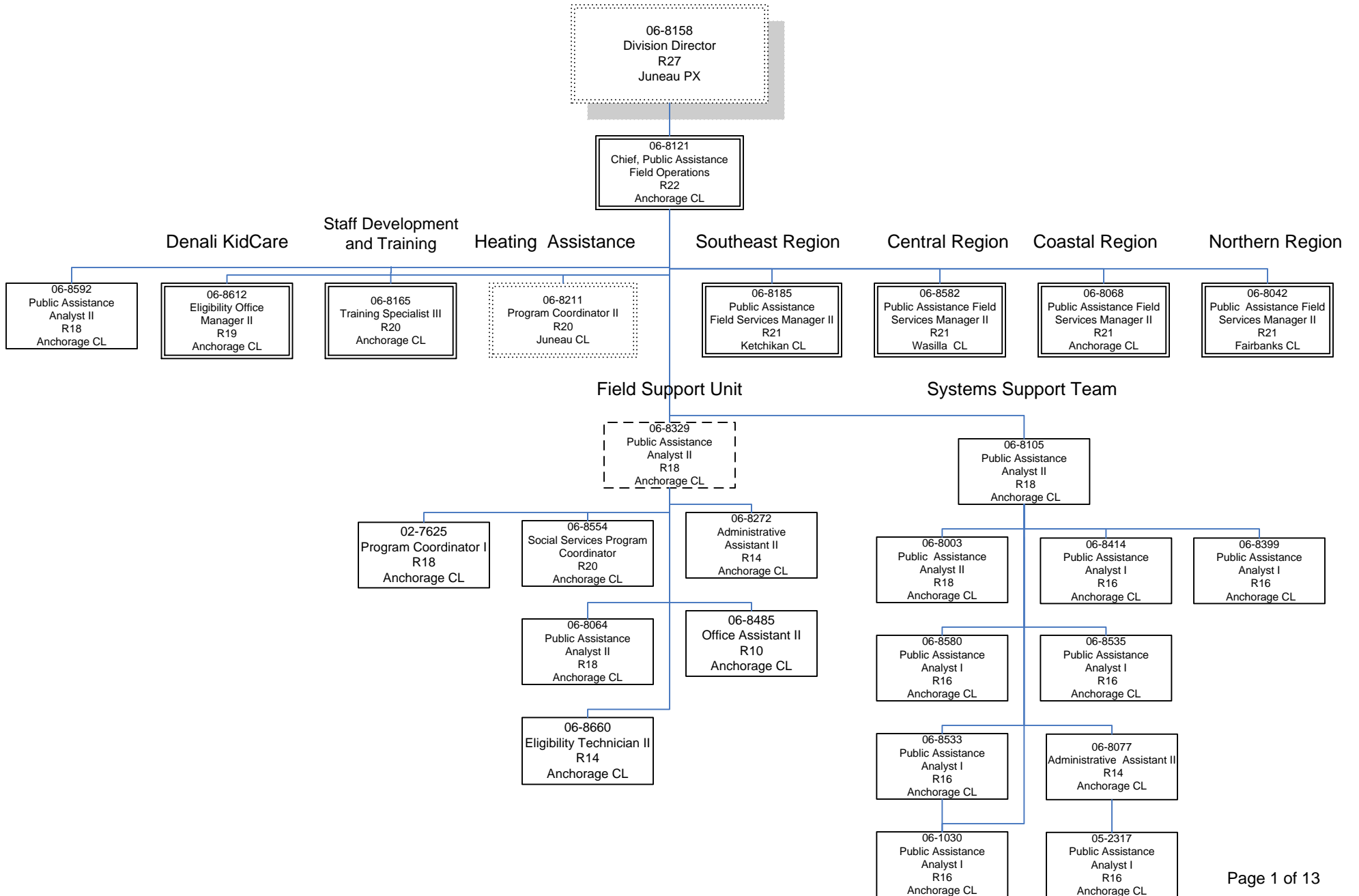
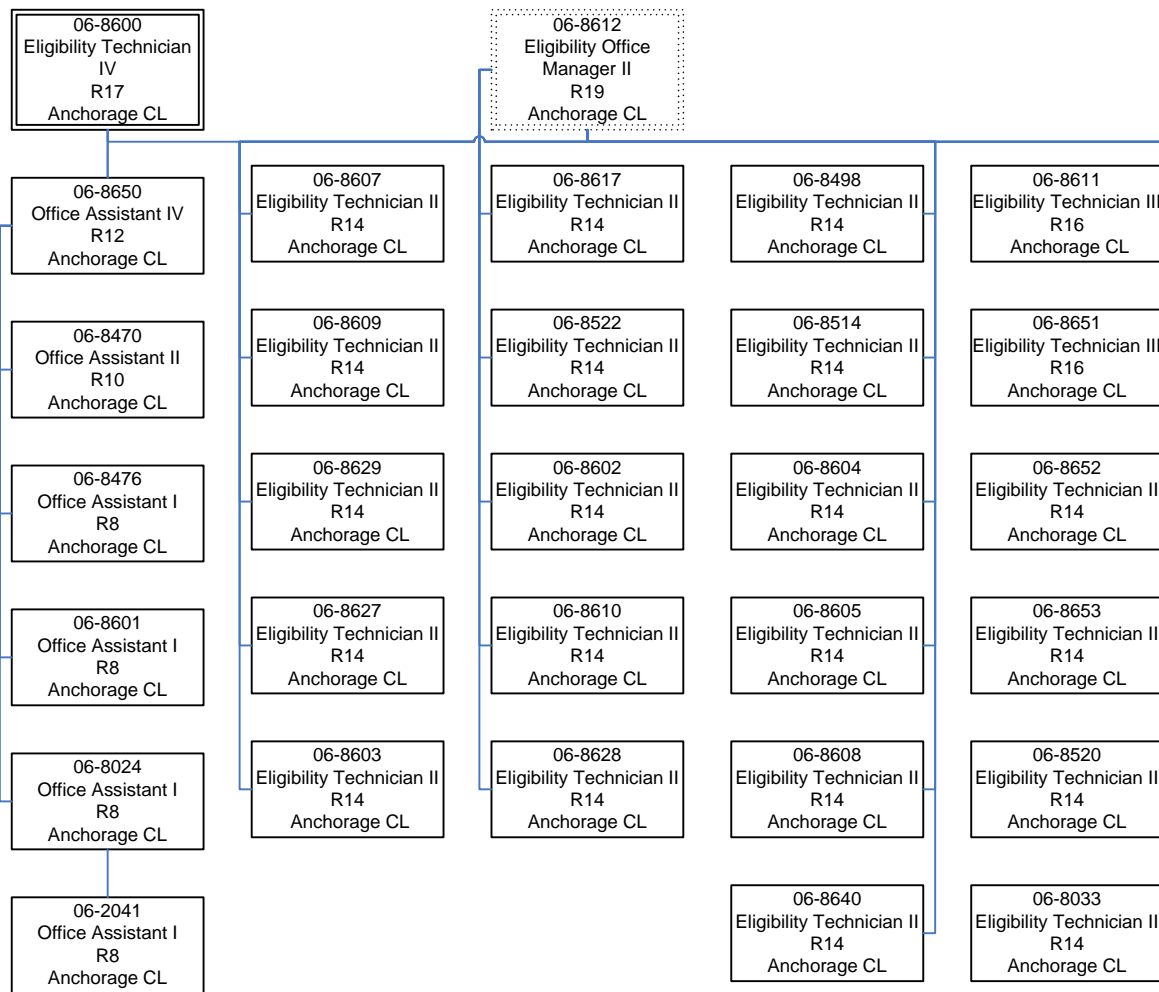


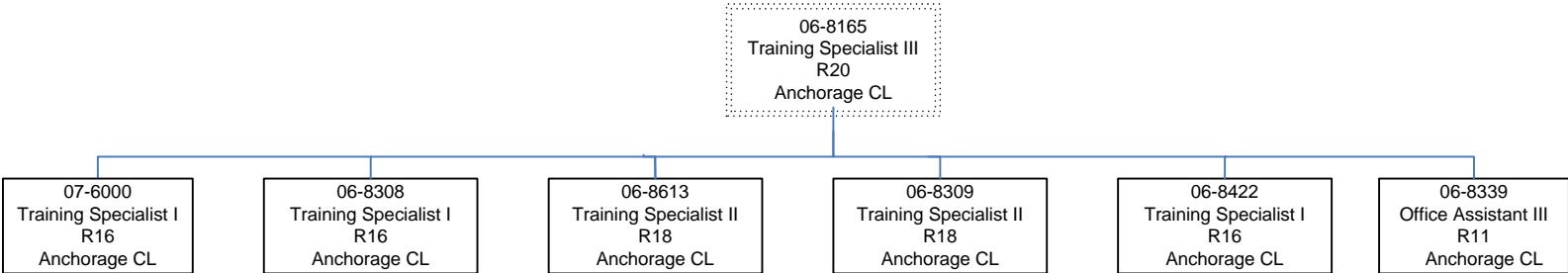
DEPARTMENT OF HEALTH AND SOCIAL SERVICES
 Division of Public Assistance
 Field Services
 Administrative



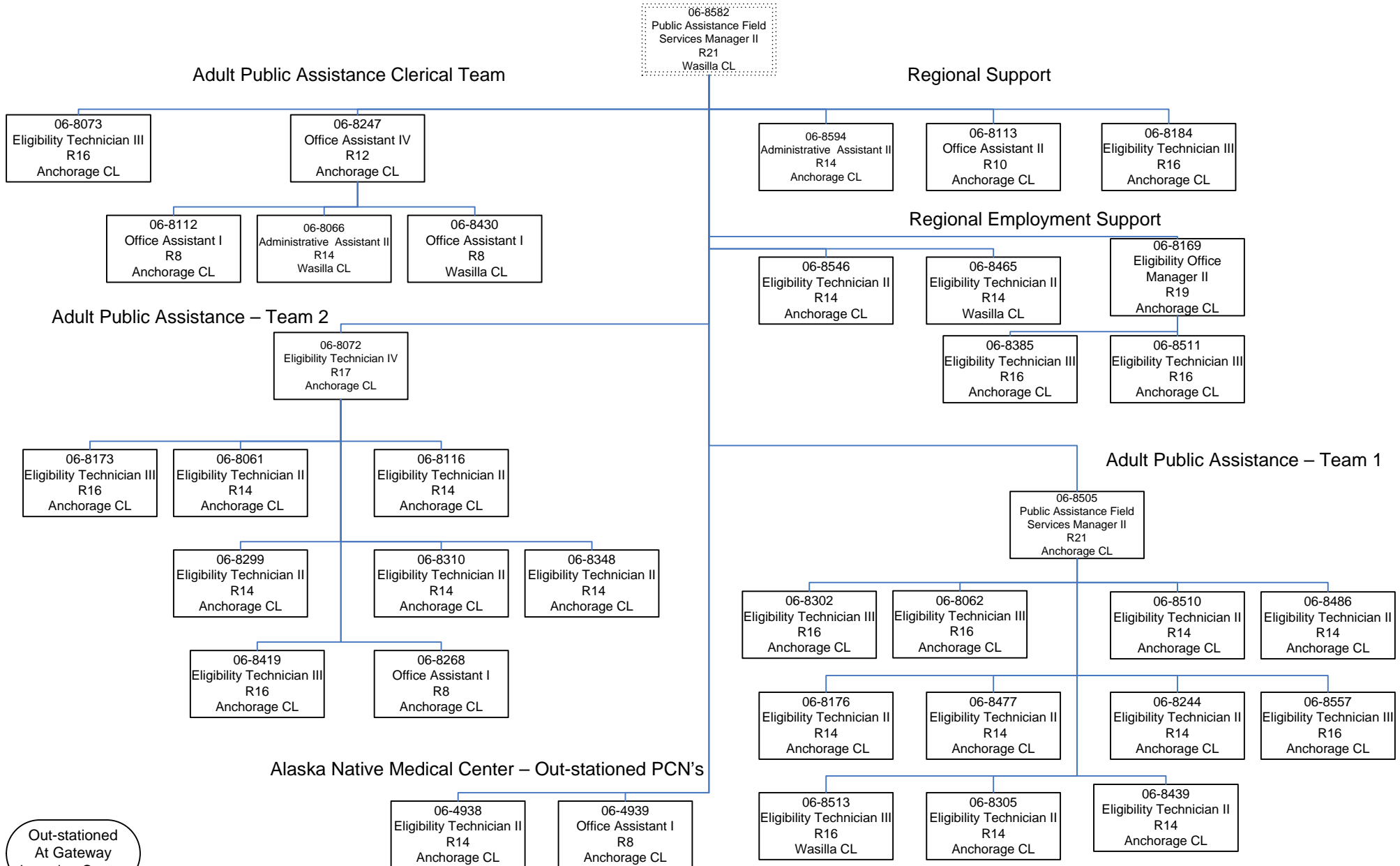
DEPARTMENT OF HEALTH AND SOCIAL SERVICES
 Division of Public Assistance
 Field Services
 Coastal Field Office 2



DEPARTMENT OF HEALTH AND SOCIAL SERVICES
Division of Public Assistance
Field Services
Staff Development and Training

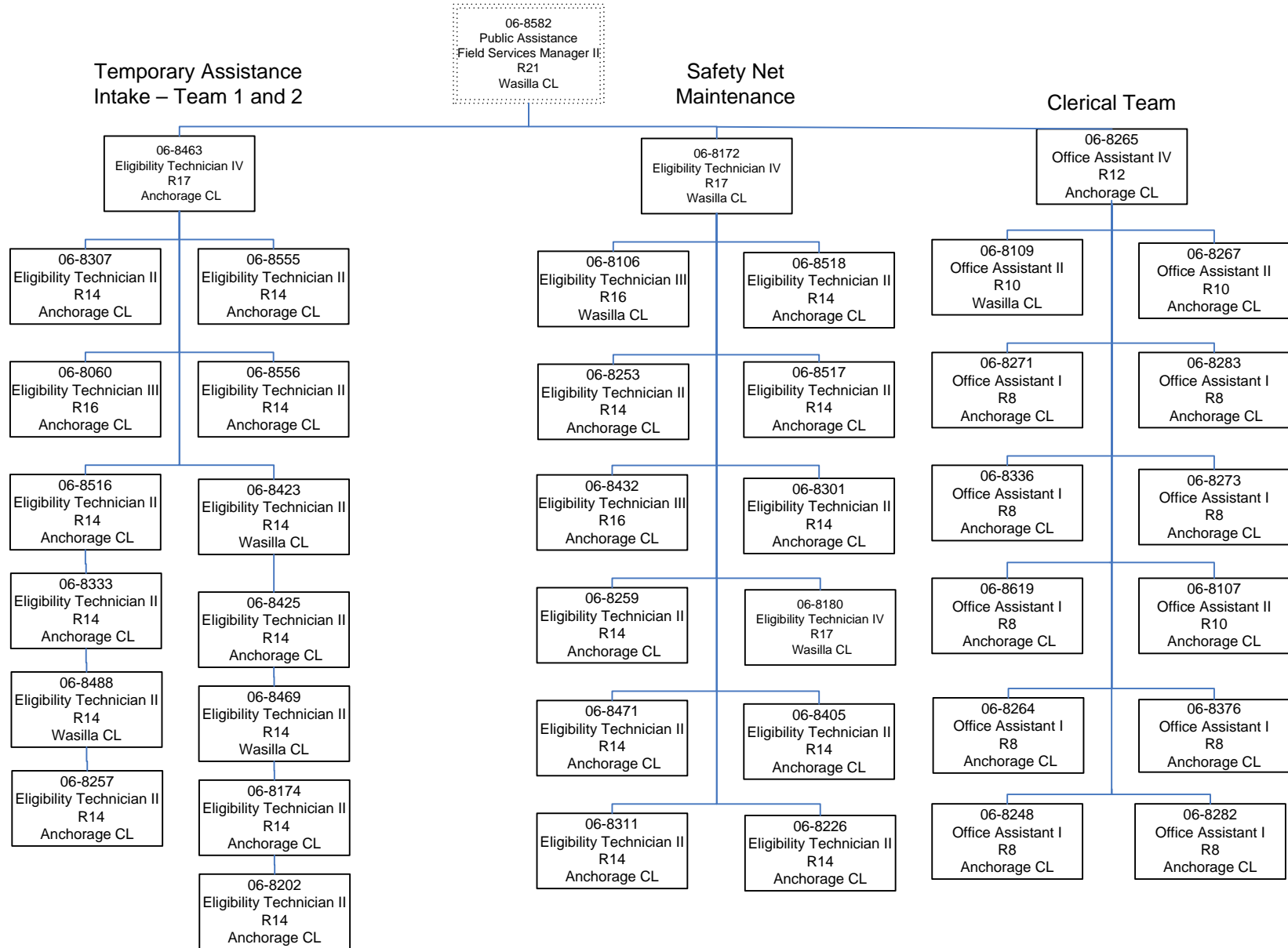


DEPARTMENT OF HEALTH AND SOCIAL SERVICES
 Division of Public Assistance
 Field Services
 Central Region
 Regional Support and Adult Public Assistance



Out-stationed
At Gateway
Learning Center

DEPARTMENT OF HEALTH AND SOCIAL SERVICES
 Division of Public Assistance
 Field Services
 Central Region
 Anchorage/Gambell



DEPARTMENT OF HEALTH AND SOCIAL SERVICES
 Division of Public Assistance
 Field Services
 Central Region
 Mat-Su

06-8582
 Public Assistance Field
 Services Manager II
 R21
 Wasilla CL

06-8384
 Eligibility Office
 Manager II
 R19
 Wasilla CL

Mat-Su TA Intake

Safety Net Maintenance

Mat-Su TA Ongoing

06-8201
 Eligibility Technician IV
 R17
 Wasilla CL

06-8041
 Public Assistance Field
 Services Manager I
 R19
 Wasilla CL

06-8098
 Eligibility Technician IV
 R17
 Wasilla CL

06-8378
 Eligibility Technician III
 R16
 Wasilla CL

06-8464
 Eligibility Technician II
 R14
 Wasilla CL

06-8084
 Eligibility Technician III
 R16
 Wasilla CL

06-8585
 Eligibility Technician II
 R14
 Wasilla CL

06-8251
 Eligibility Technician III
 R16
 Wasilla CL

06-8313
 Eligibility Technician II
 R14
 Wasilla CL

06-8171
 Eligibility Technician III
 R16
 Wasilla CL

06-8322
 Eligibility Technician II
 R14
 Wasilla CL

06-8527
 Eligibility Technician II
 R14
 Wasilla CL

06-8175
 Eligibility Technician II
 R14
 Wasilla CL

06-8564
 Eligibility Technician II
 R14
 Wasilla CL

06-8565
 Eligibility Technician II
 R14
 Wasilla CL

06-8528
 Eligibility Technician II
 R14
 Wasilla CL

06-8377
 Eligibility Technician II
 R14
 Wasilla CL

06-8100
 Eligibility Technician II
 R14
 Wasilla CL

06-8436
 Eligibility Technician II
 R14
 Wasilla CL

06-8231
 Eligibility Technician II
 R14
 Wasilla CL

06-8225
 Eligibility Technician II
 R14
 Wasilla CL

06-8545
 Eligibility Technician II
 R14
 Wasilla CL

06-8102
 Eligibility Technician II
 R14
 Anchorage CL

06-8458
 Eligibility Technician II
 R14
 Wasilla CL

06-8228
 Eligibility Technician II
 R14
 Wasilla CL

06-8571
 Eligibility Technician II
 R14
 Wasilla CL

06-8375
 Eligibility Technician II
 R14
 Wasilla CL

06-8481
 Eligibility Technician II
 R14
 Wasilla CL

06-8457
 Eligibility Technician II
 R14
 Wasilla CL

06-8618
 Eligibility Technician II
 R14
 Wasilla CL

06-8459
 Office Assistant I
 R8
 Wasilla CL

06-8284
 Eligibility Technician II
 R14
 Wasilla CL

06-8424
 Eligibility Technician II
 R14
 Wasilla CL

06-8139
 Eligibility Technician II
 R14
 Wasilla CL

06-8502
 Eligibility Technician II
 R14
 Wasilla CL

06-8537
 Office Assistant I
 R8
 Wasilla CL

06-8143
 Office Assistant I
 R8
 Wasilla CL

06-8438
 Eligibility Technician II
 R14
 Wasilla CL

06-8606
 Eligibility Technician II
 R14
 Wasilla CL

06-8563
 Eligibility Technician II
 R14
 Wasilla CL

06-8484
 Eligibility Technician II
 R14
 Wasilla CL

06-8238
 Office Assistant I
 R8
 Wasilla CL

06-8649
 Office Assistant I
 R8
 Wasilla CL

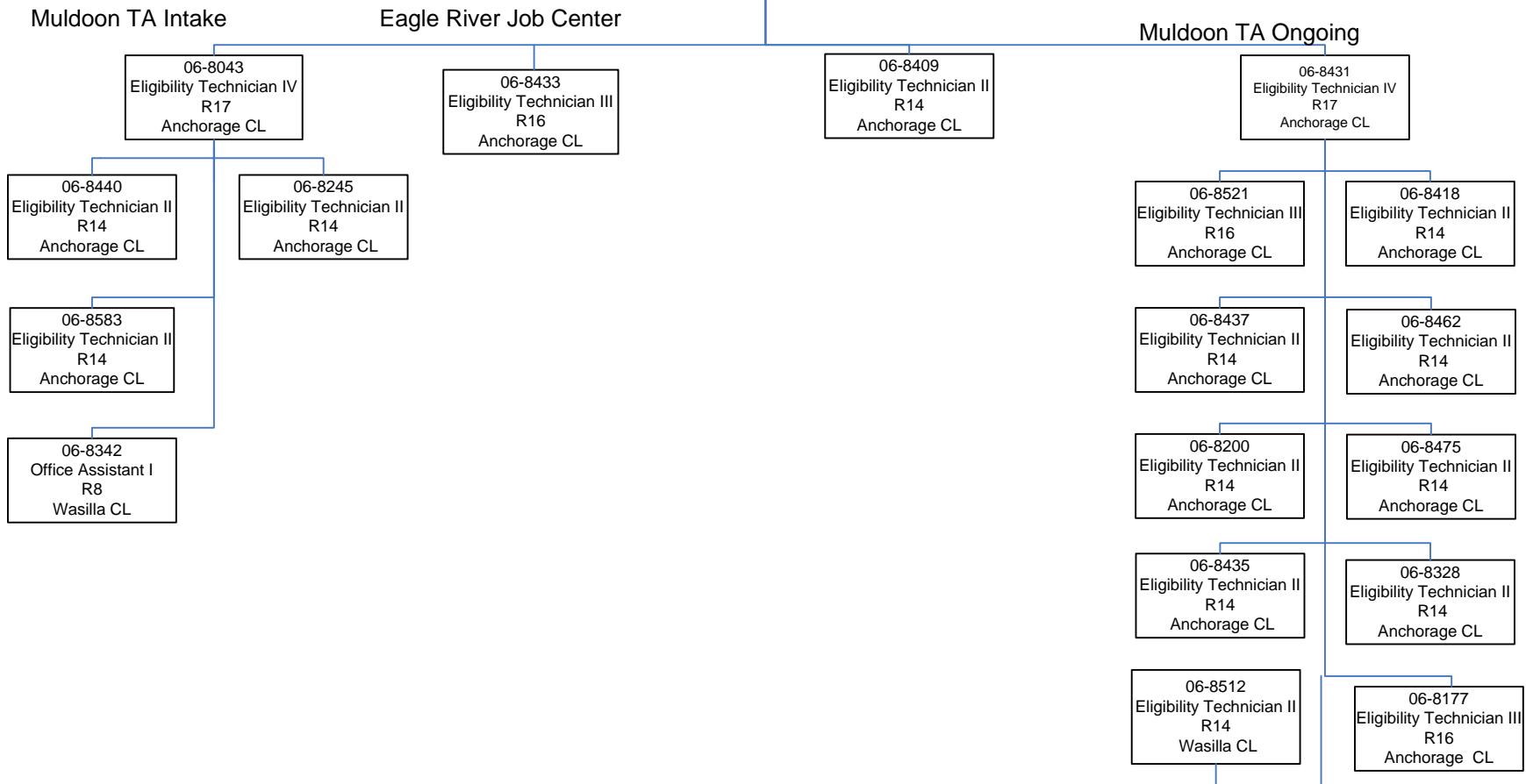
06-8103
 Eligibility Technician II
 R14
 Wasilla CL

06-8366
 Office Assistant IV
 R12
 Wasilla CL

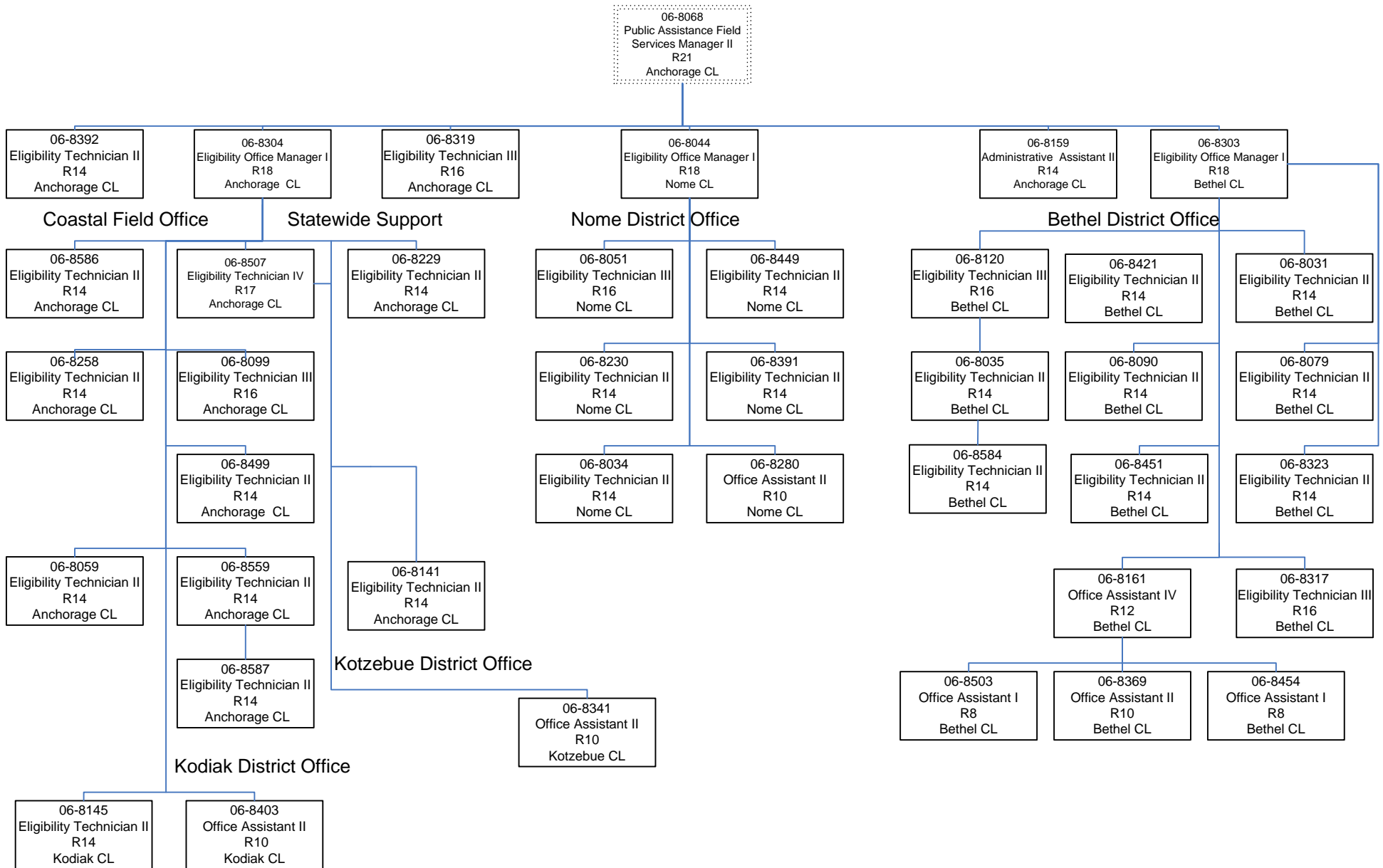
DEPARTMENT OF HEALTH AND SOCIAL SERVICES
 Division of Public Assistance
 Field Services
 Central Region
 Muldoon

06-8582
 Public Assistance Field
 Services Manager II
 R21
 Wasilla CL

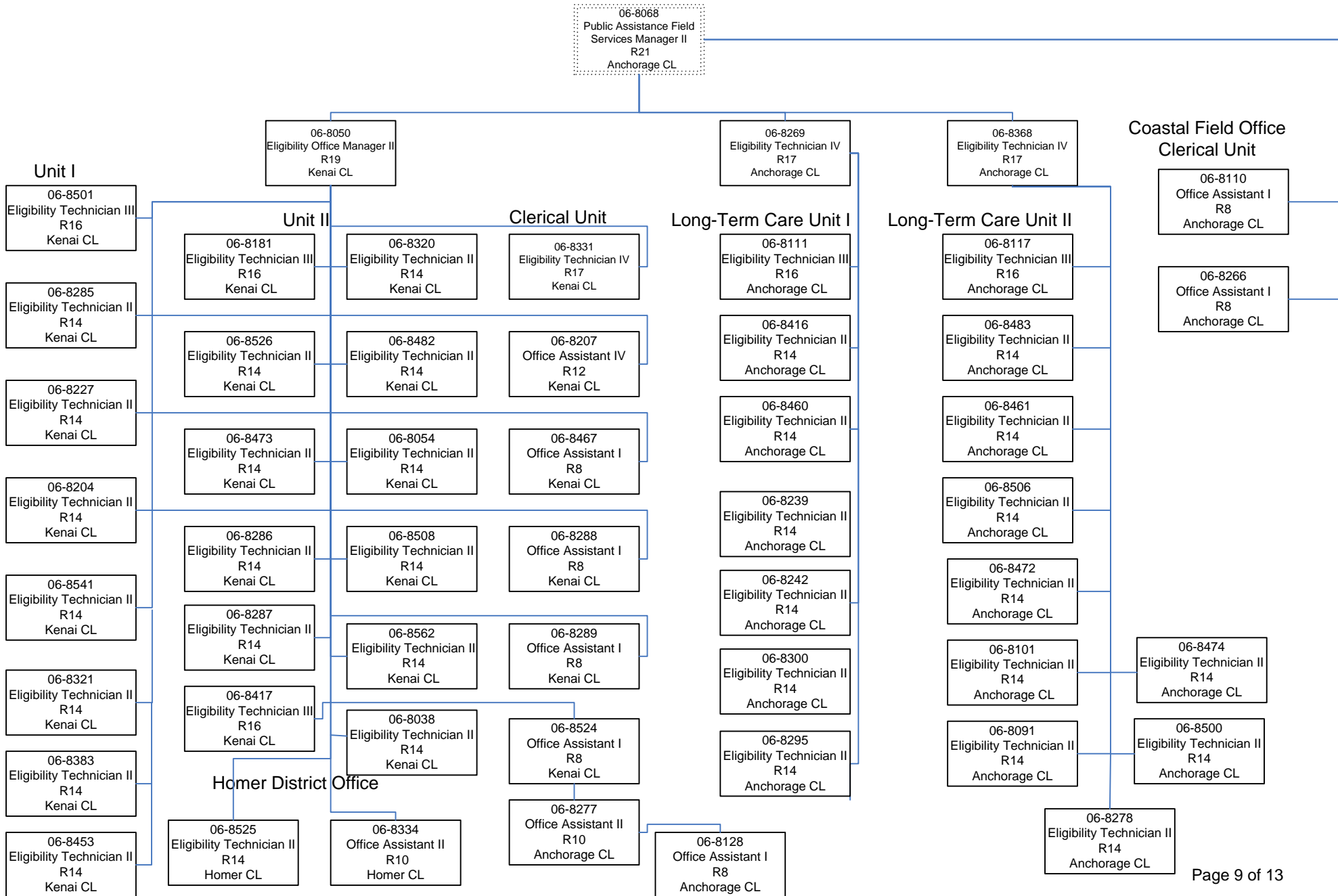
06-8081
 Eligibility Office
 Manager II
 R19
 Anchorage CL



DEPARTMENT OF HEALTH AND SOCIAL SERVICES
 Division of Public Assistance
 Field Services
 Coastal Region



DEPARTMENT OF HEALTH AND SOCIAL SERVICES
 Division of Public Assistance
 Field Services
 Coastal Region



DEPARTMENT OF HEALTH AND SOCIAL SERVICES
 Division of Public Assistance
 Field Services
 Northern Region

06-8042
 Public Assistance Field
 Services Manager II
 R21
 Fairbanks CL

Maintenance Team 1

Regional Team

Intake Team

Maintenance Team 2

Work
 Services

Clerical Team

06-8315
 Eligibility Technician IV
 R17
 Fairbanks CL

06-8089
 Eligibility Technician II
 R14
 Fairbanks CL

06-8150
 Eligibility Technician II
 R14
 Fairbanks CL

06-8179
 Eligibility Technician III
 R16
 Fairbanks CL

06-8162
 Eligibility Technician II
 R14
 Fairbanks CL

06-8445
 Eligibility Technician II
 R14
 Fairbanks CL

06-8420
 Eligibility Technician II
 R14
 Fairbanks CL

06-8045
 Eligibility Technician II
 R14
 Fairbanks CL

06-8203
 Eligibility Technician III
 R16
 Fairbanks CL

06-8275
 Administrative Assistant II
 R14
 Fairbanks CL

06-8390
 Office Assistant II
 R10
 Fairbanks CL

06-8118
 Eligibility Technician III
 R16
 Fairbanks CL

06-8316
 Eligibility Technician III
 R16
 Fairbanks CL

06-8205
 Eligibility Technician II
 R14
 Fairbanks CL

06-8040
 Eligibility Office Manager I
 R18
 Fairbanks CL

06-8182
 Eligibility Technician II
 R14
 Fairbanks CL

06-8479
 Eligibility Technician II
 R14
 Fairbanks CL

06-8235
 Eligibility Technician III
 R16
 Fairbanks CL

06-8566
 Eligibility Technician III
 R16
 Fairbanks CL

06-8478
 Eligibility Technician II
 R14
 Fairbanks CL

06-8261
 Eligibility Technician II
 R14
 Fairbanks CL

06-8560
 Eligibility Technician II
 R14
 Fairbanks CL

06-8558
 Eligibility Technician II
 R14
 Fairbanks CL

06-8078
 Eligibility Technician II
 R14
 Fairbanks CL

06-8036
 Eligibility Technician II
 R14
 Fairbanks CL

06-8260
 Eligibility Technician II
 R14
 Fairbanks CL

06-8540
 Eligibility Technician II
 R14
 Fairbanks CL

06-8444
 Eligibility Technician II
 R14
 Fairbanks CL

06-8055
 Eligibility Technician II
 R14
 Fairbanks CL

06-8441
 Eligibility Technician II
 R14
 Fairbanks CL

06-8442
 Eligibility Technician IV
 R17
 Fairbanks CL

06-8057
 Eligibility Technician III
 R16
 Fairbanks CL

06-8446
 Eligibility Technician II
 R14
 Fairbanks CL

06-8547
 Eligibility Technician II
 R14
 Fairbanks CL

06-8236
 Eligibility Technician II
 R14
 Fairbanks CL

06-8443
 Eligibility Technician II
 R14
 Fairbanks CL

06-8318
 Eligibility Technician II
 R14
 Fairbanks CL

06-8480
 Eligibility Technician II
 R14
 Fairbanks CL

06-8408
 Eligibility Technician II
 R14
 Fairbanks CL

06-8434
 Eligibility Technician II
 R14
 Fairbanks CL

06-8548
 Protective Services
 Specialist II
 R17
 Fairbanks CL

06-8387
 Protective Services
 Specialist II
 R17
 Fairbanks CL

06-8568
 Protective Services
 Specialist II
 R17
 Fairbanks CL

06-8208
 Office Assistant IV
 R12
 Fairbanks CL

06-8237
 Office Assistant I
 R8
 Anchorage CL

06-8281
 Office Assistant I
 R8
 Fairbanks CL

06-8335
 Office Assistant I
 R8
 Fairbanks CL

06-8025
 Office Assistant I
 R8
 Fairbanks CL

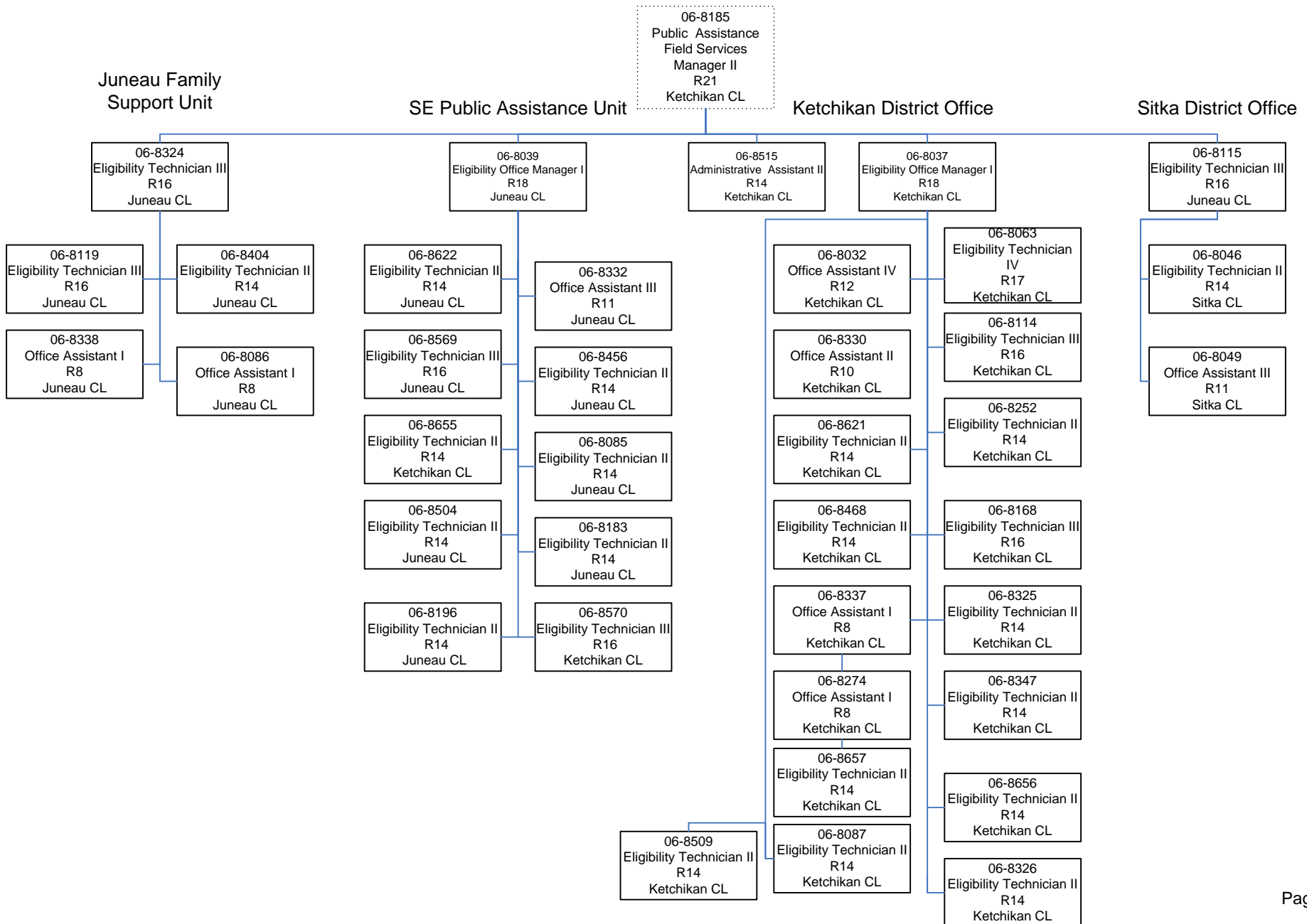
06-8593
 Office Assistant I
 R8
 Fairbanks CL

06-8276
 Office Assistant II
 R10
 Fairbanks CL

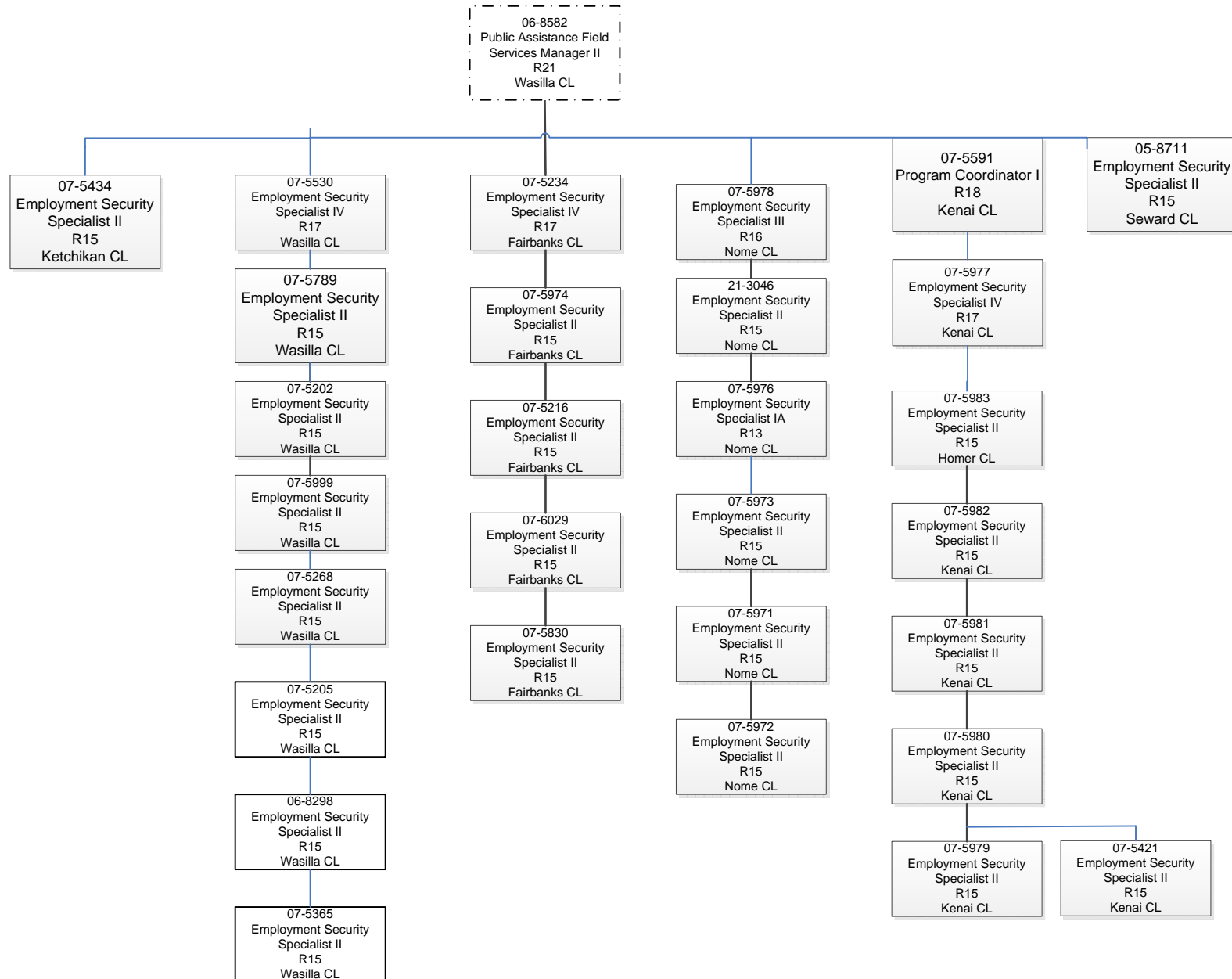
06-8067
 Office Assistant I
 R8
 Fairbanks CL

06-8279
 Office Assistant I
 R8
 Fairbanks CL

DEPARTMENT OF HEALTH AND SOCIAL SERVICES
 Division of Public Assistance
 Field Services
 Southeast Region



DEPARTMENT OF HEALTH AND
SOCIAL SERVICES
Division of Public Assistance
Field Services/Work Services



DEPARTMENT OF HEALTH AND SOCIAL SERVICES
Division of Public Assistance
Senior Benefits Program/Mat-Su Maintenance

