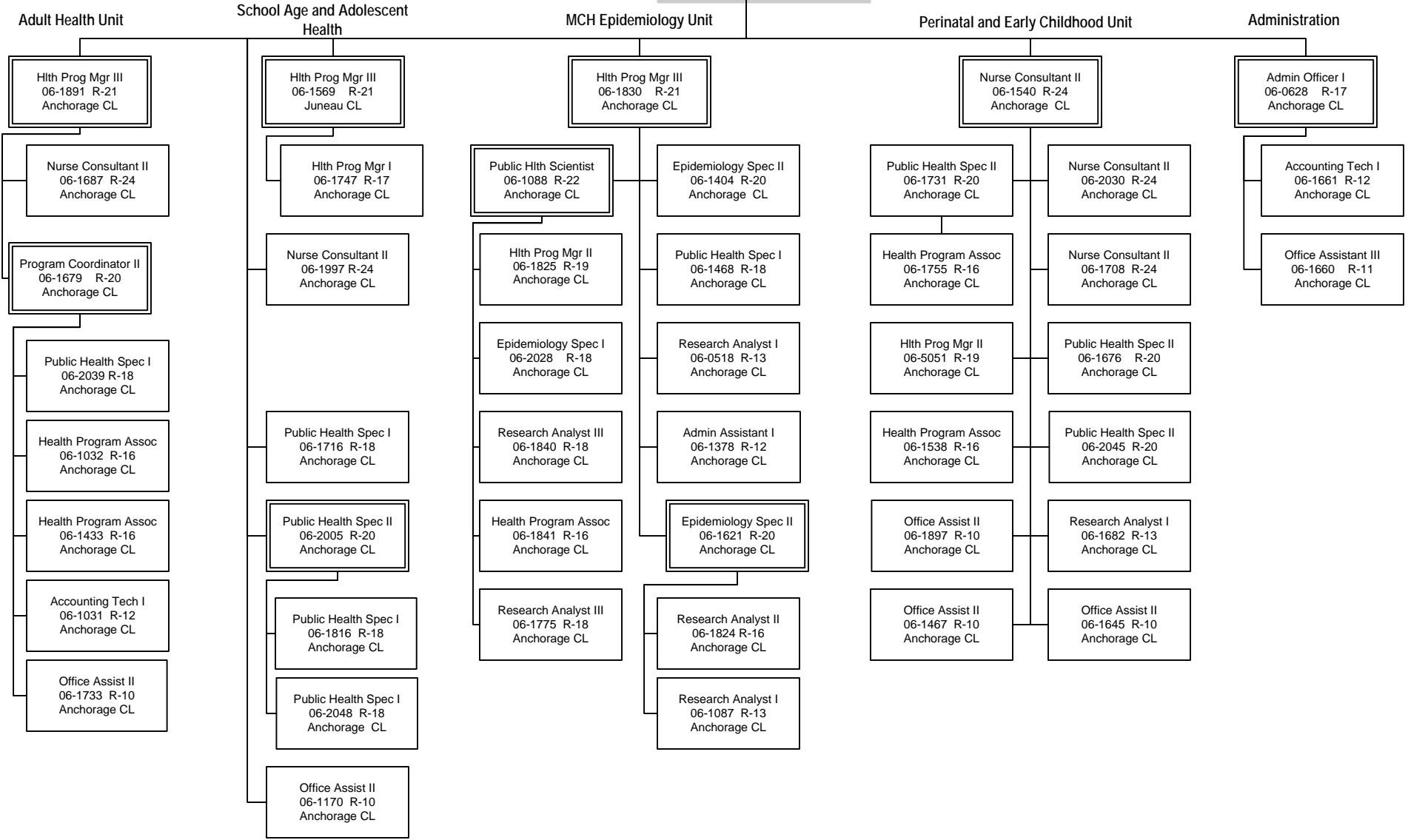


Department of Health & Social Services  
 RDU: Public Health (502)  
 COMPONENT: Women's, Children's and Family Health

Public Hlth Nurse V  
 06-1831 R-25  
 Anchorage CL



FY17 Governor's Budget  
 Division of Public Health  
 Women, Children and Family Health  
 PFT: 47 PPT: 0 NP: 0  
 Effective: 10/5/2015