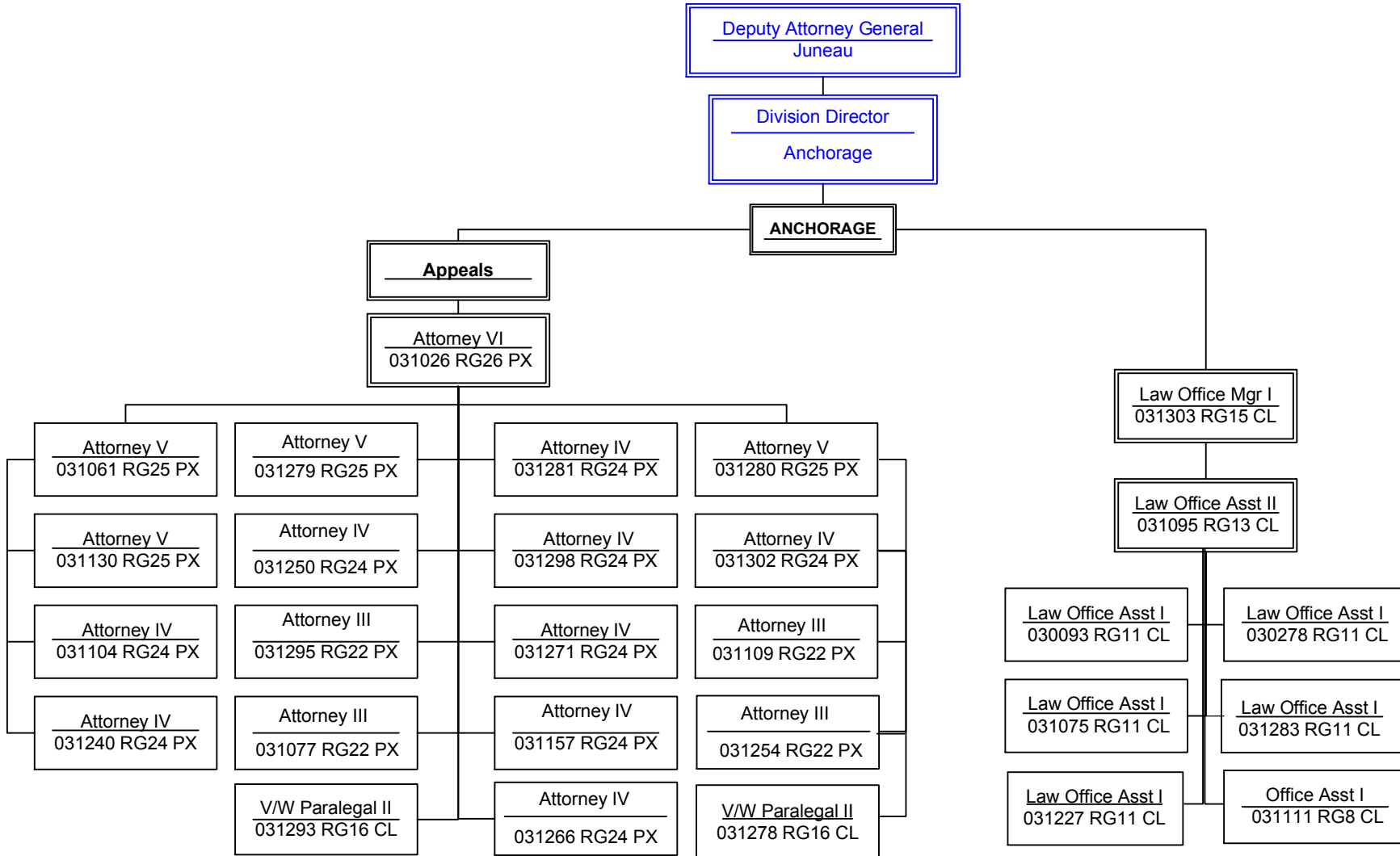


# CRIMINAL DIVISION

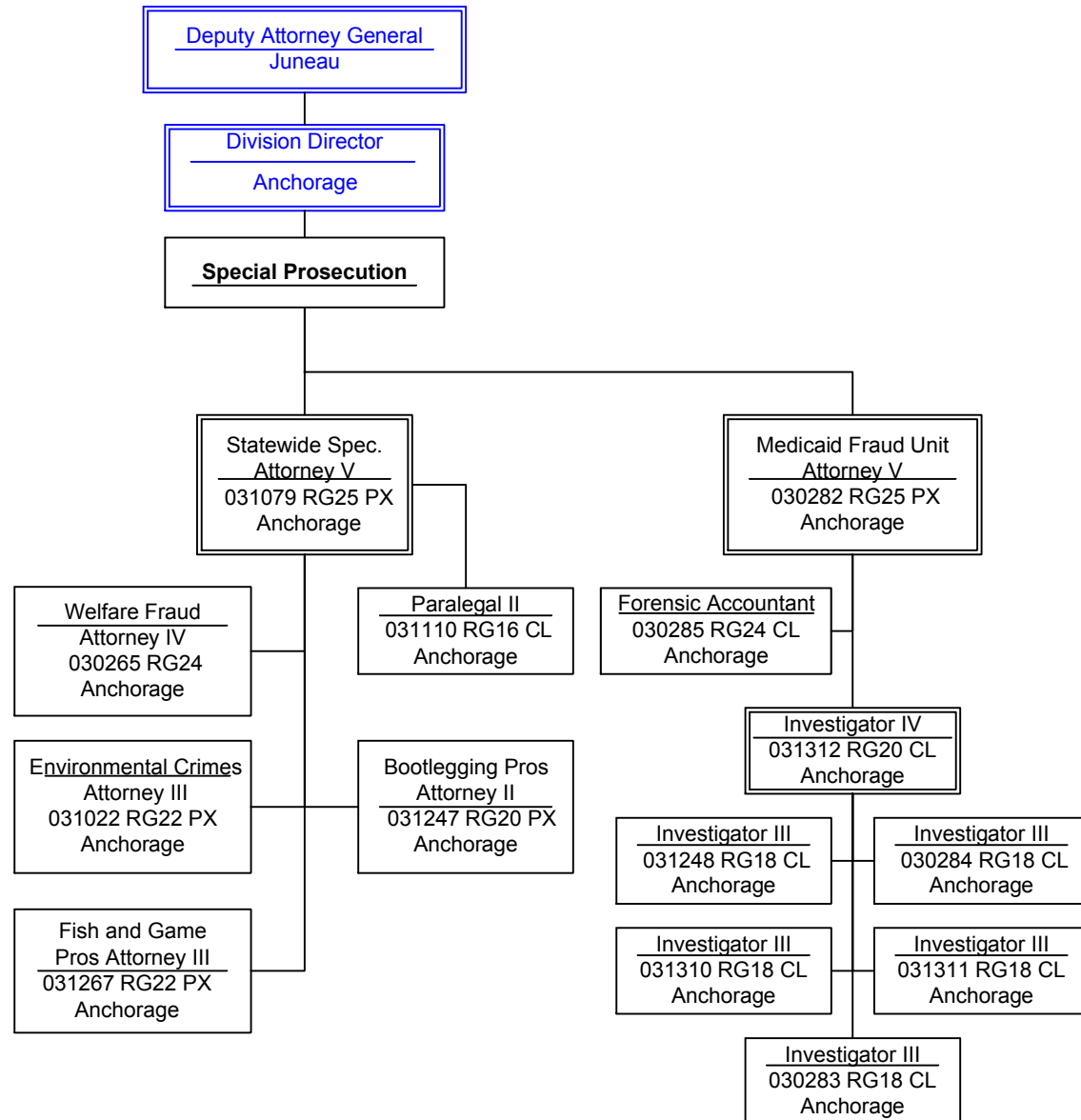
## Criminal Appeals/Special Litigation 1 of 2



Note: Positions outlined in blue indicate that the PCNs are counted elsewhere but shown here to indicate organizational hierarchy.

# CRIMINAL DIVISION

## Criminal Appeals/Special Litigation 2 of 2



Note: Positions outlined in blue indicate that the PCNs are counted elsewhere but shown here to indicate organizational hierarchy.