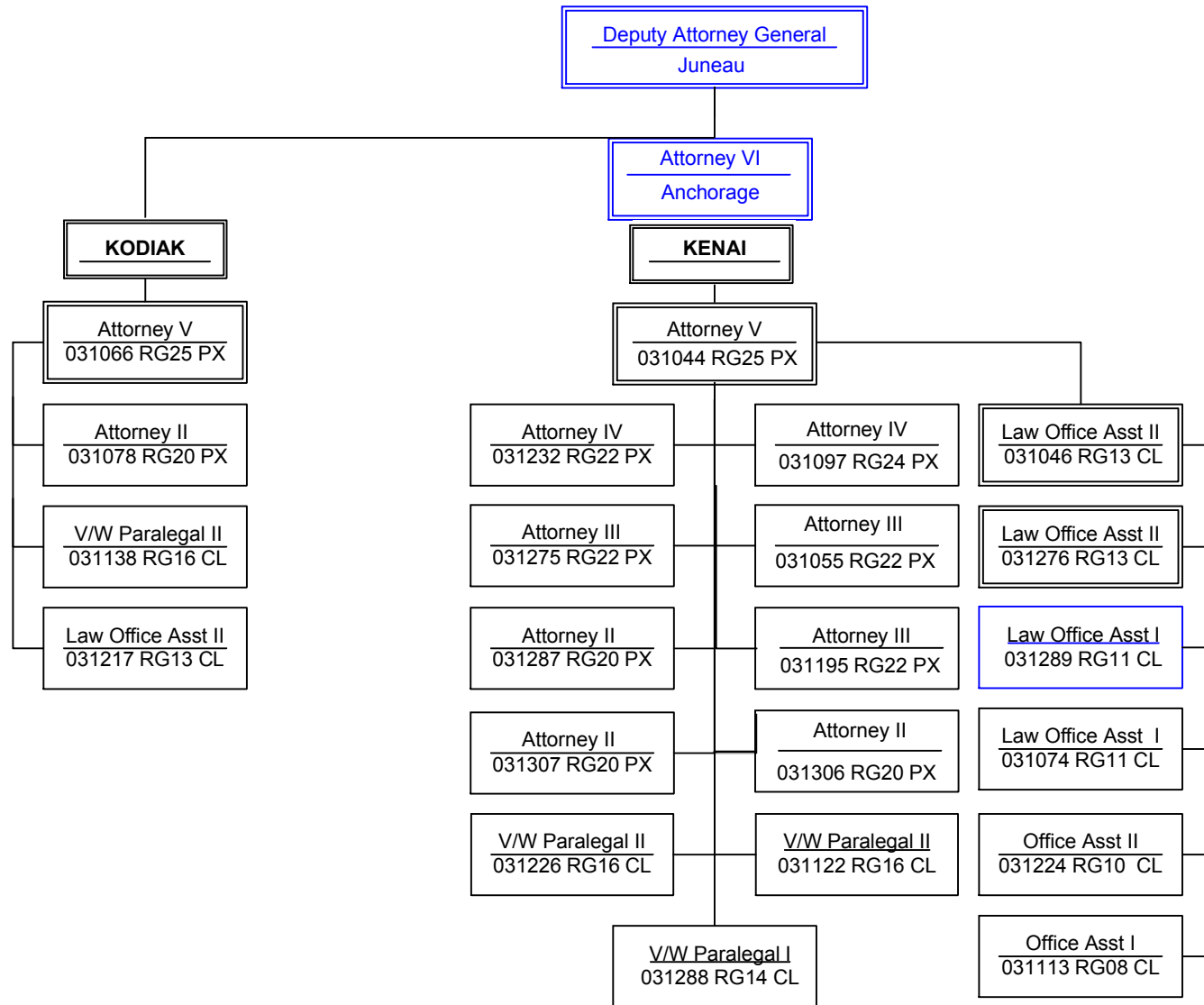


# CRIMINAL DIVISION

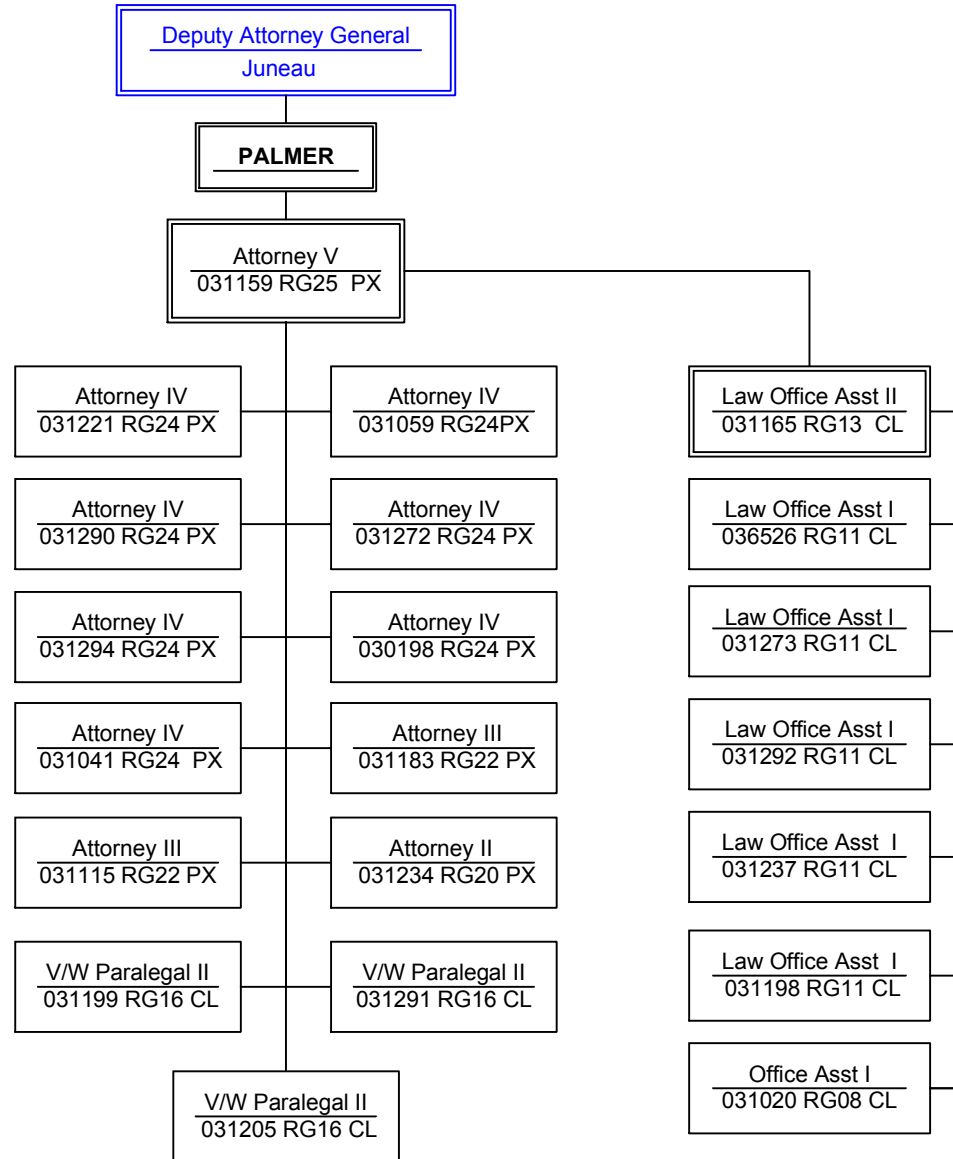
## Third Judicial District: Outside Anchorage 1 of 2



Note: Positions outlined in blue indicate that the PCNs are counted elsewhere but shown here to indicate organizational hierarchy.

# CRIMINAL DIVISION

## Third Judicial District: Outside Anchorage 2 of 2



Note: Positions outlined in blue indicate that the PCNs are counted elsewhere but shown here to indicate organizational hierarchy.

Component Position Count:43  
Position Count this page:21